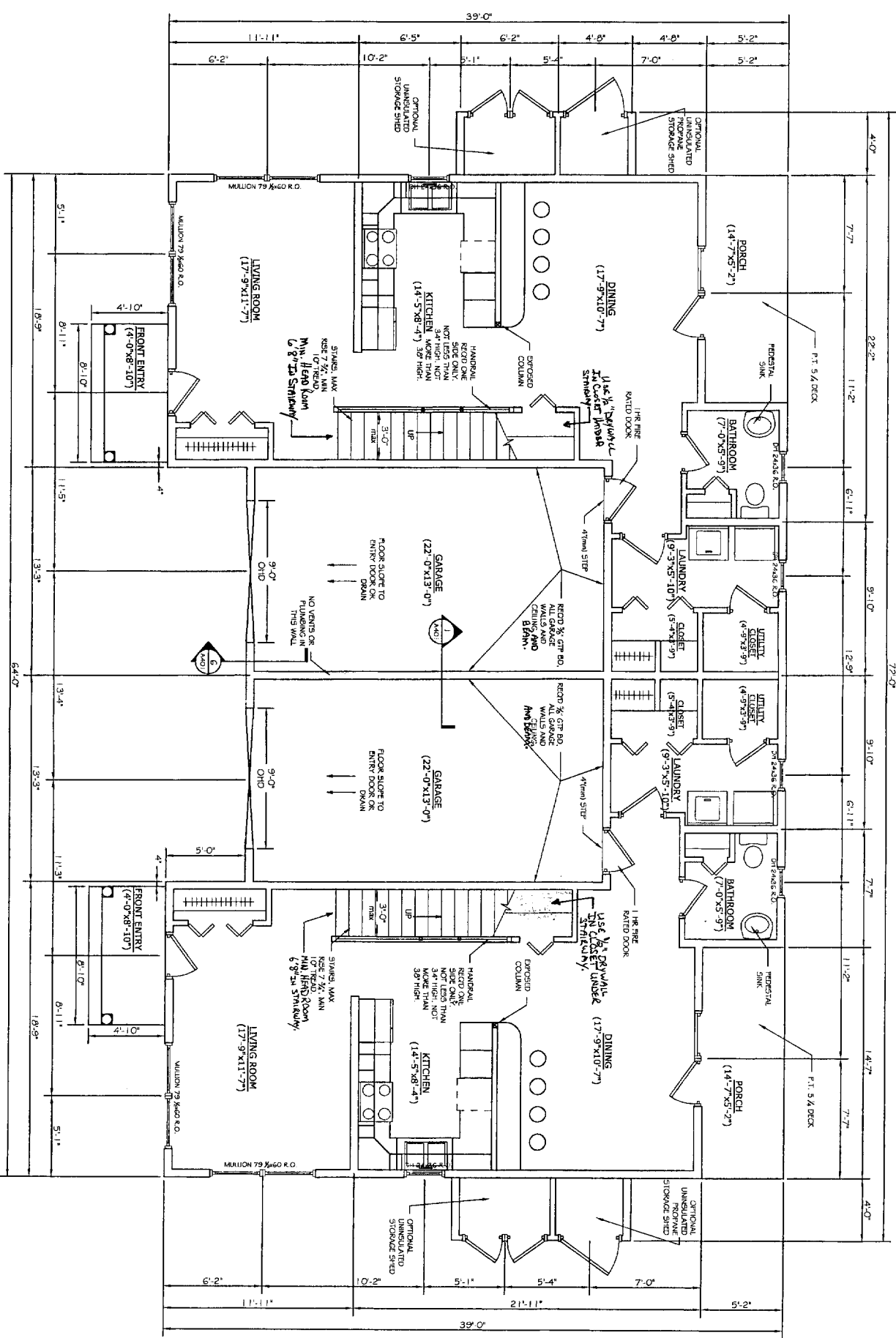


DEPT. OF BUILDING INSPECTION
CITY OF PORTLAND, ME
OCT - 4 2005
RECEIVED



DUPLEX FIRST FLOOR PLANS
SCALE: 1/4" = 1'-0"

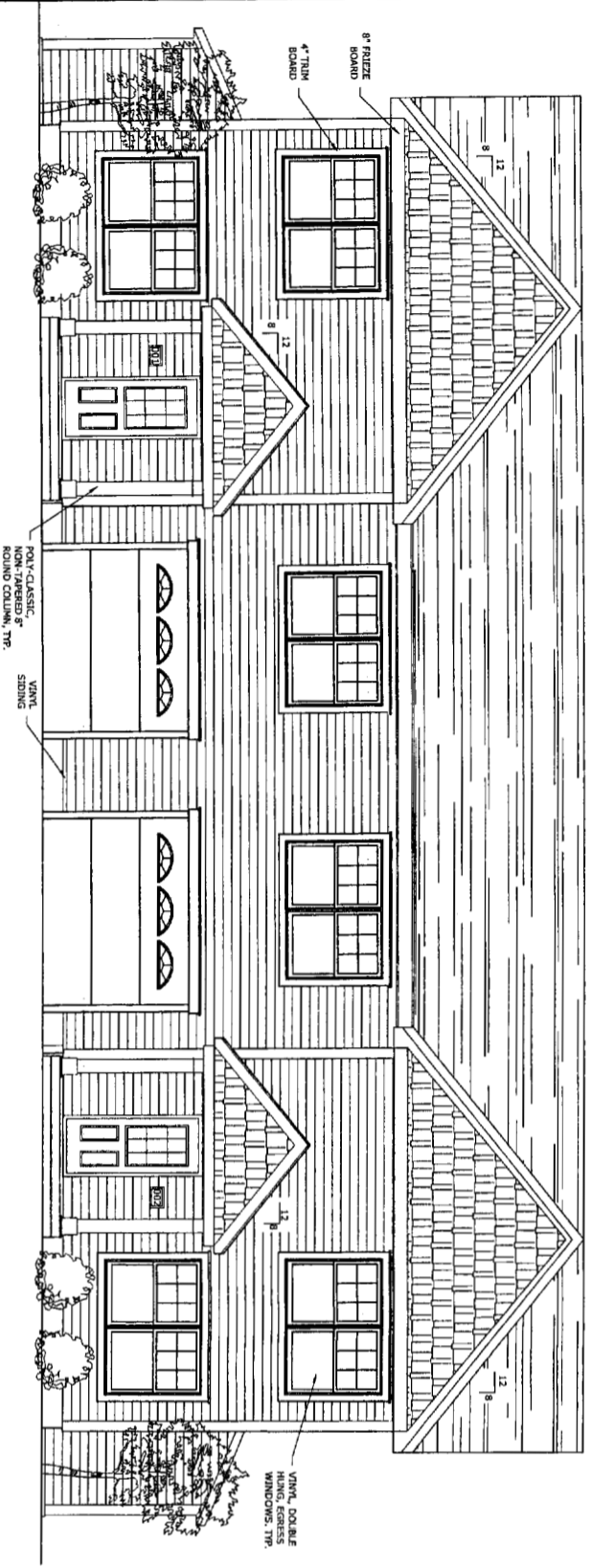
REVISIONS		
No.	BY	DESCRIPTION
1	SHI	For Construction

PROJECT: **JARITA COURT CONDO**
LANE AVE. PORTLAND, ME 04101
SHEET TITLE:
FIRST FLOOR CONDOMINIUM PLAN

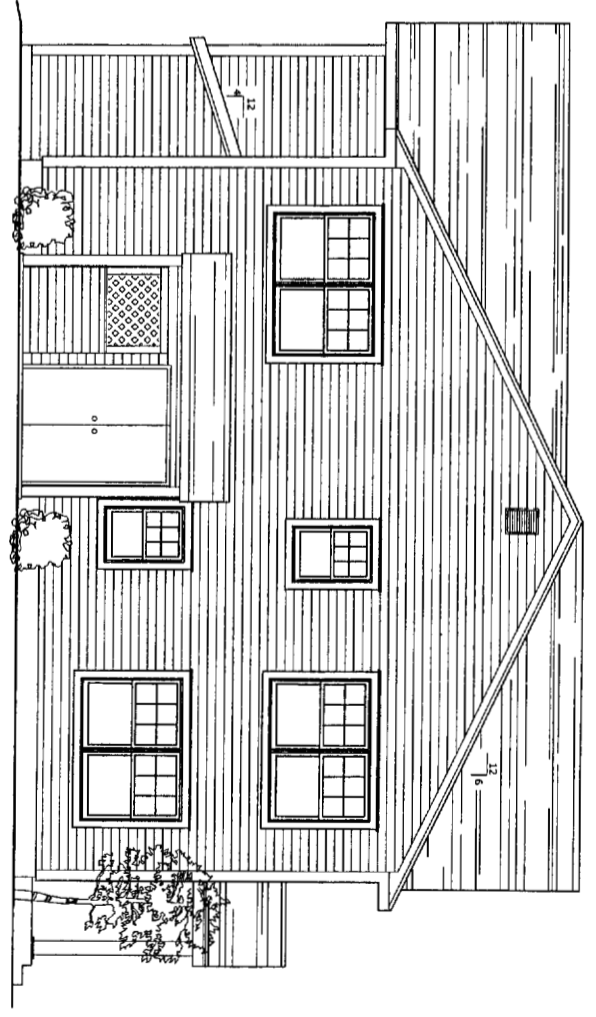
DESIGNED AND BUILT BY:
SHARP HOMES, INC.
120 EXCHANGE STREET
Portland, Maine 04101
Office: (207) 874-6959
Fax: (207) 874-6988

DATE: 01/04/05
SCALE: AS NOTED
FILE # 02102-A101A
PROJECT NUMBER:
02102
SHEET NO.:
A101

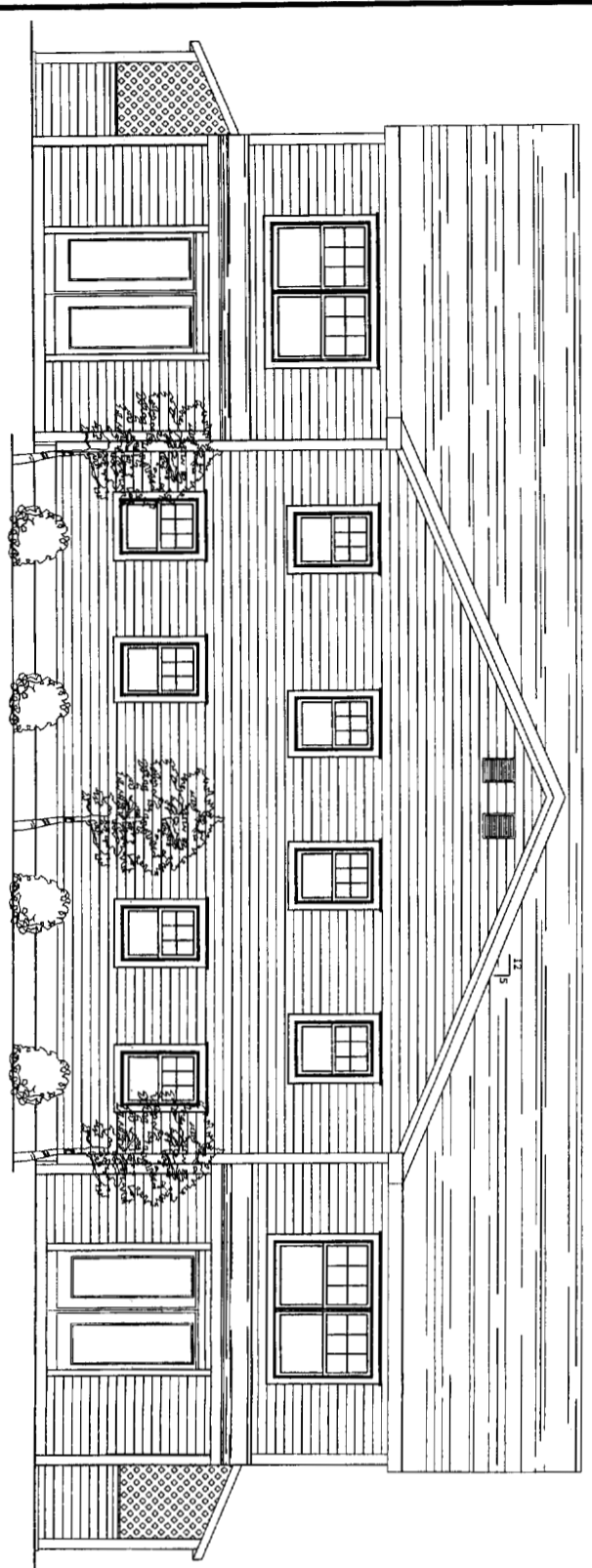
9:\30027\01\02102\02102-A101.dwg



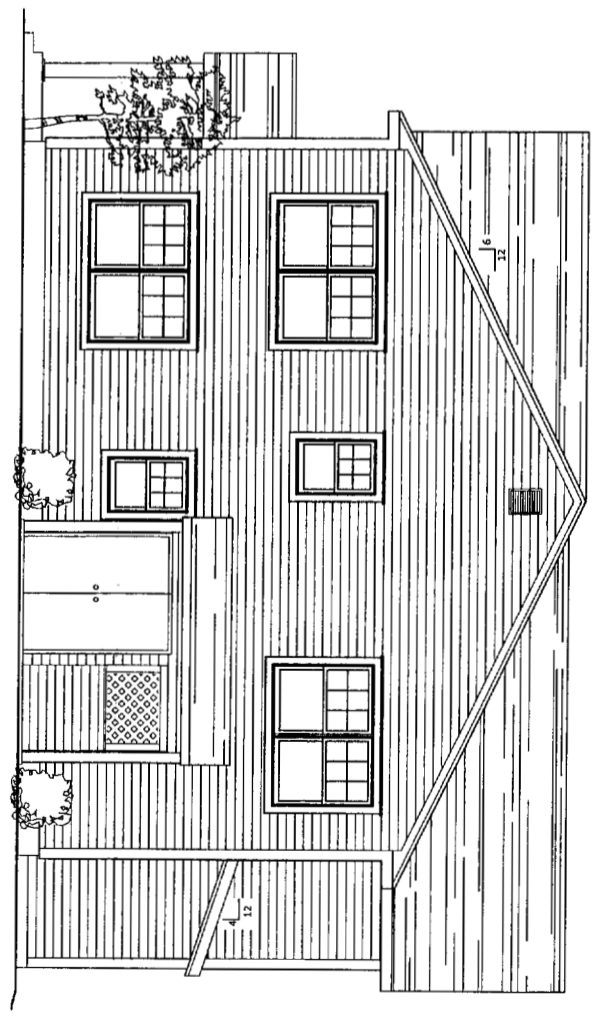
FRONT ELEVATION
SCALE: 1/4" = 1'-0"



RIGHT ELEVATION
SCALE: 1/4" = 1'-0"



REAR ELEVATIONS
SCALE: 1/4" = 1'-0"



LEFT ELEVATIONS
SCALE: 1/4" = 1'-0"

No.	BY	REVISIONS DESCRIPTION	DATE
1	SRZ	FOR CONSTRUCTION	2-10-05

PROJECT: JARITA COURT CONDO
LANE AVE. PORTLAND, ME 04101

SHEET TITLE:
CONDOMINIUM ELEVATIONS

DESIGNED AND BUILT BY:

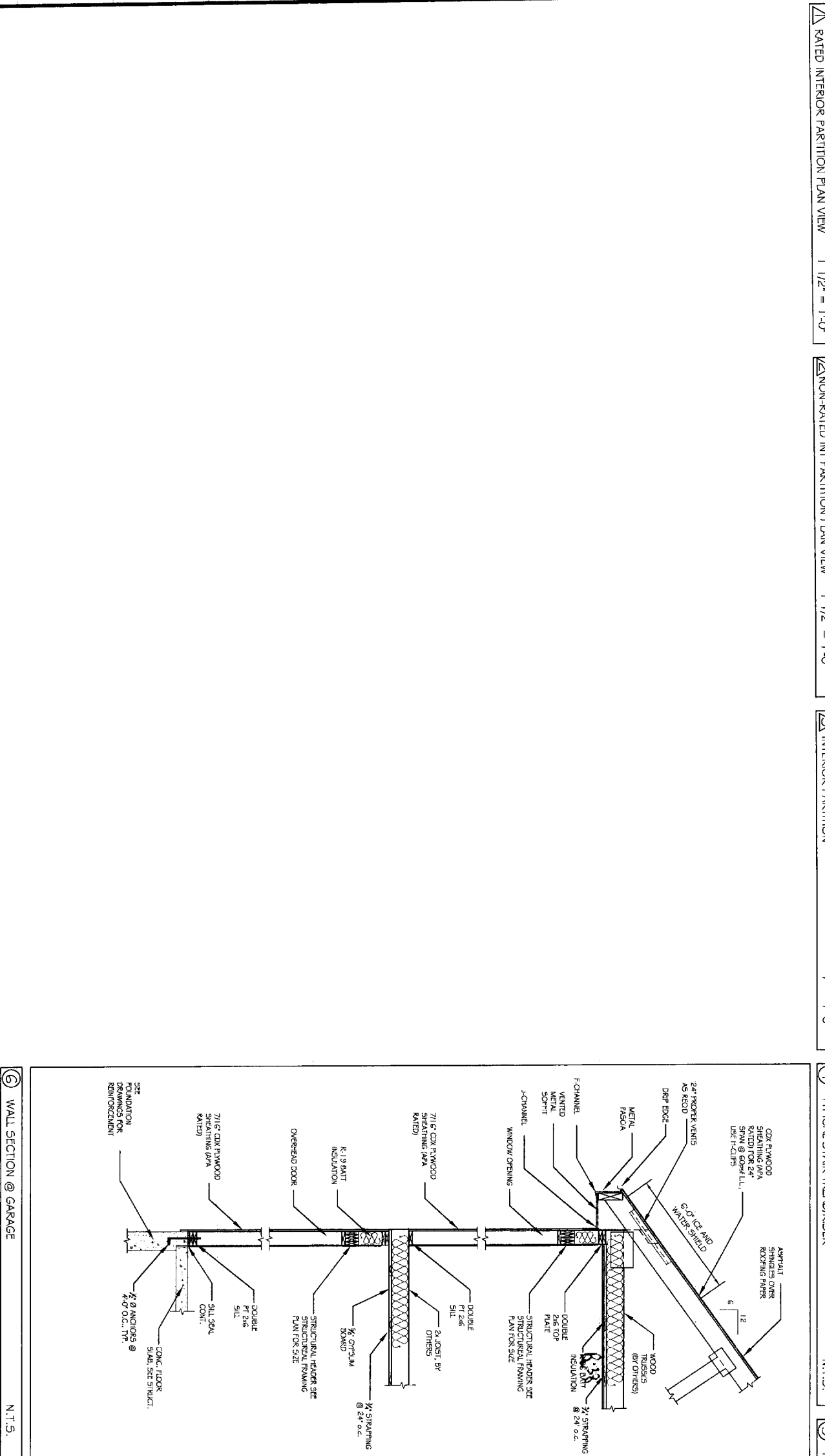
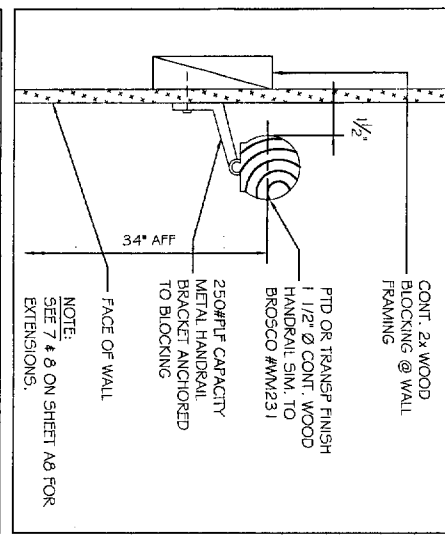
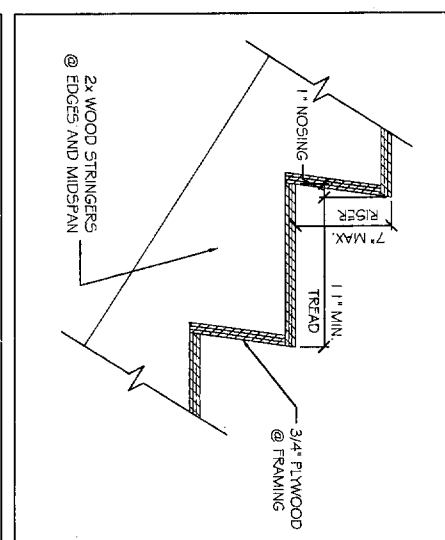
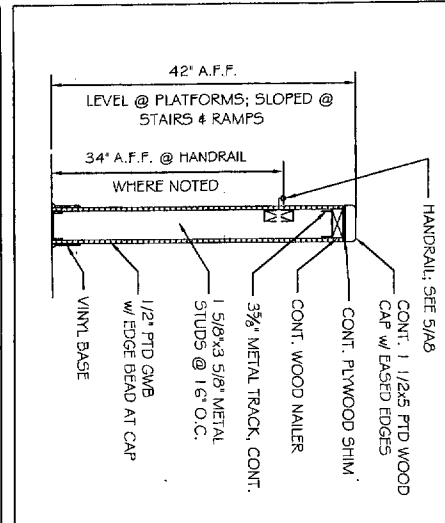
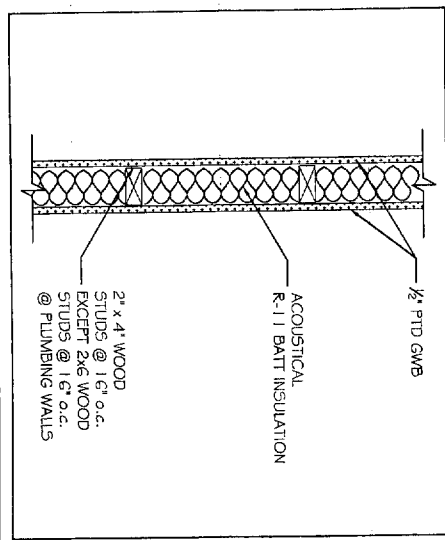
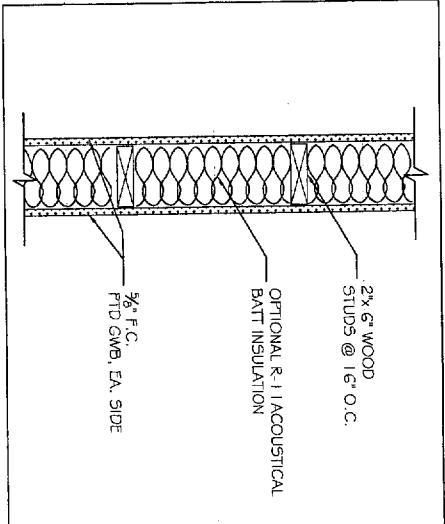
SHARP HOMES, INC.

120 EXCHANGE STREET
Portland, Maine 04101

Office: (207) 874-6959
Fax: (207) 874-6988

DATE: 01/04/05
SCALE: AS NOTED
FILE # 02102-AS01.DWG
PROJECT NUMBER:
02102
SHEET NO:
A301

G:\2002Proj\02102\02102-AS01.dwg



Note: All Windows have E U-34 Rating on frames.

REVISIONS		DATE
No.	BY	DESCRIPTION
1	SHI	FOR CONSTRUCTION
2		
3		
4		

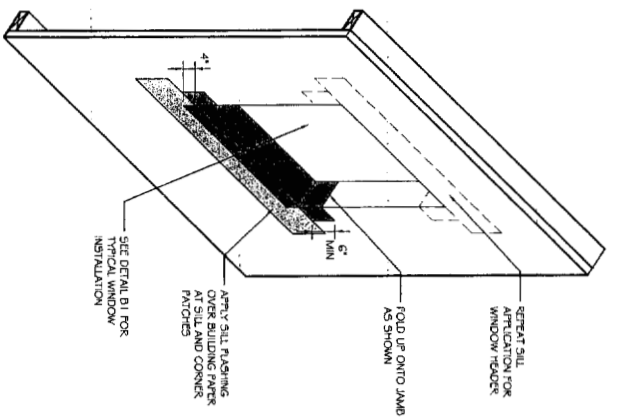
PROJECT: **JARITA COURT CONDO**
 LANE AVE. PORTLAND, ME 04101

SHEET TITLE:
ARCHITECTURAL DETAILS

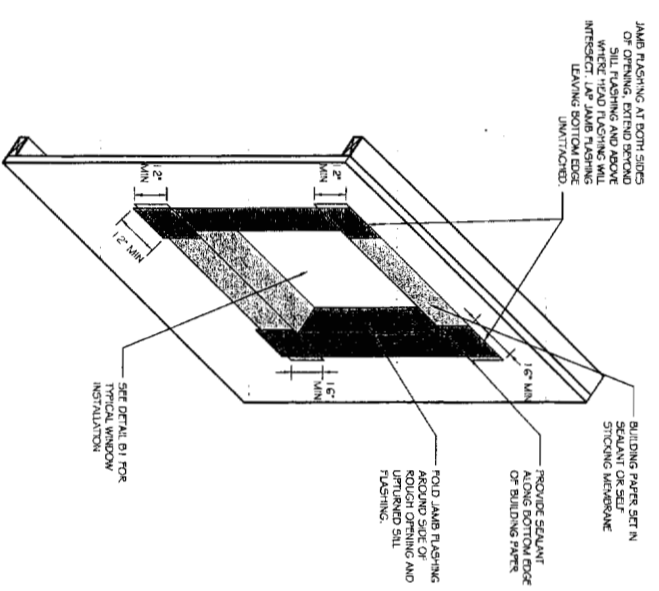
DESIGNED AND BUILT BY:
SHARP HOMES, INC.

120 EXCHANGE STREET Office: (207) 874-6959
 Portland, Maine 04101 Fax: (207) 874-6988

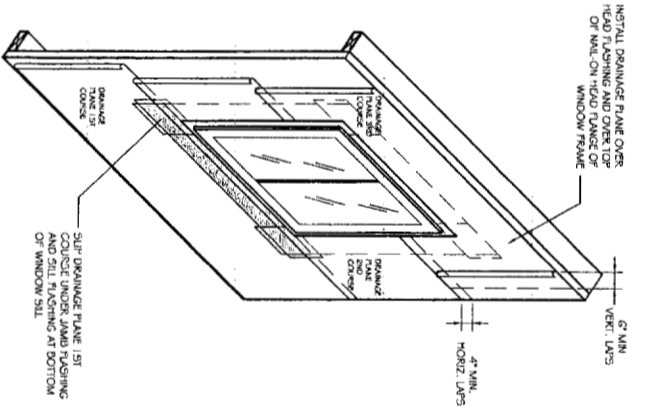
DATE: 01/04/05
 SCALE: AS NOTED
 FILE # 02102-4401.DWG
 PROJECT NUMBER
02102
 SHEET NO.
A401



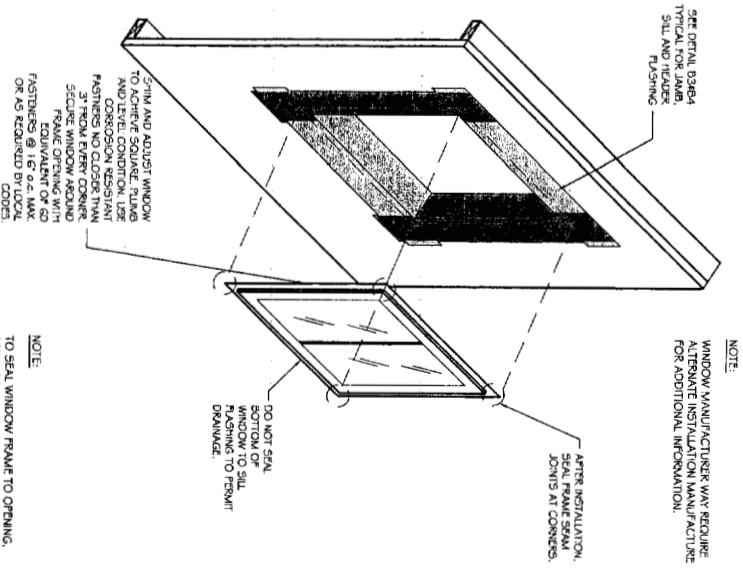
B4 HEADER/SILL FLASHING
SCALE: NTS



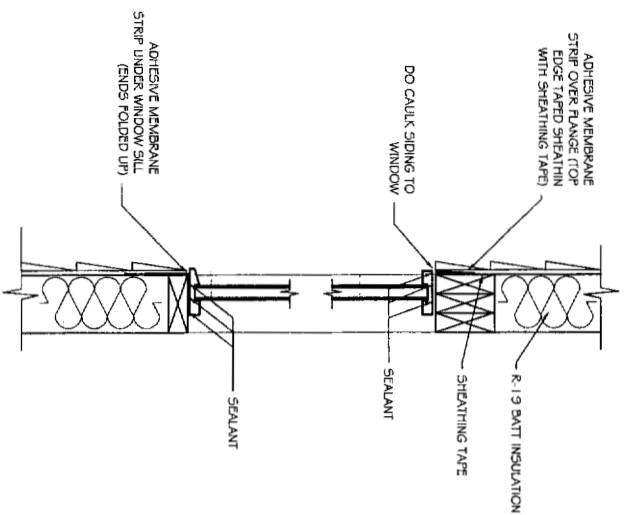
B3 JAMB FLASHING
SCALE: NTS



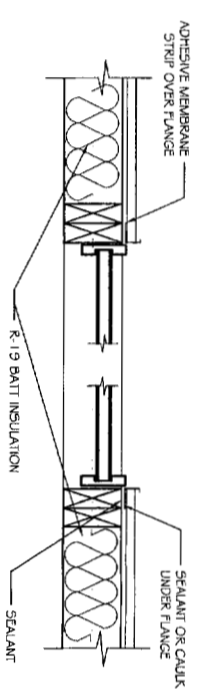
B2 DRAINAGE PLANE APPLICATION
SCALE: NTS



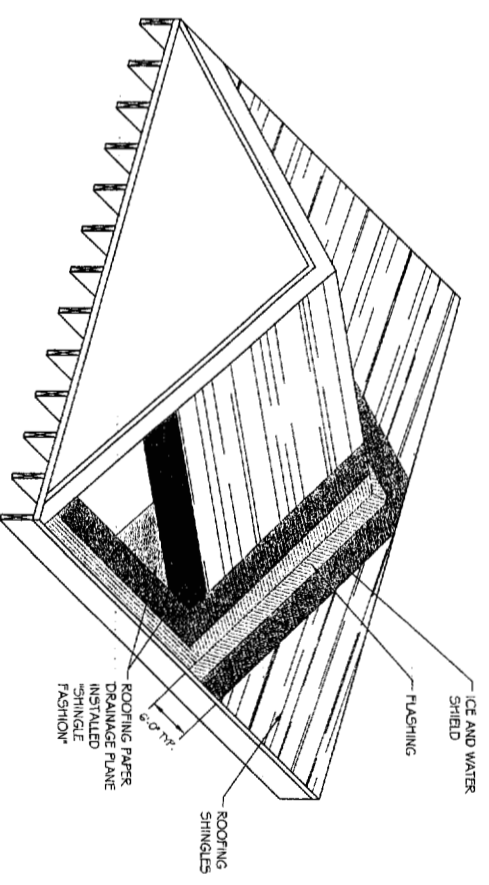
B1 WINDOW INSTALLATION
SCALE: NTS



A4 WINDOW HEAD AND WINDOW SILL
SCALE: NTS



A3 WINDOW JAMB (PLAN VIEW)
SCALE: NTS



A1 TYPICAL ROOF VALLEY PROTECTION
SCALE: NTS

REVISIONS			
No.	BY	DESCRIPTION	DATE
1	SMT	FOR CONSTRUCTION	2/11/15
2			
3			
4			

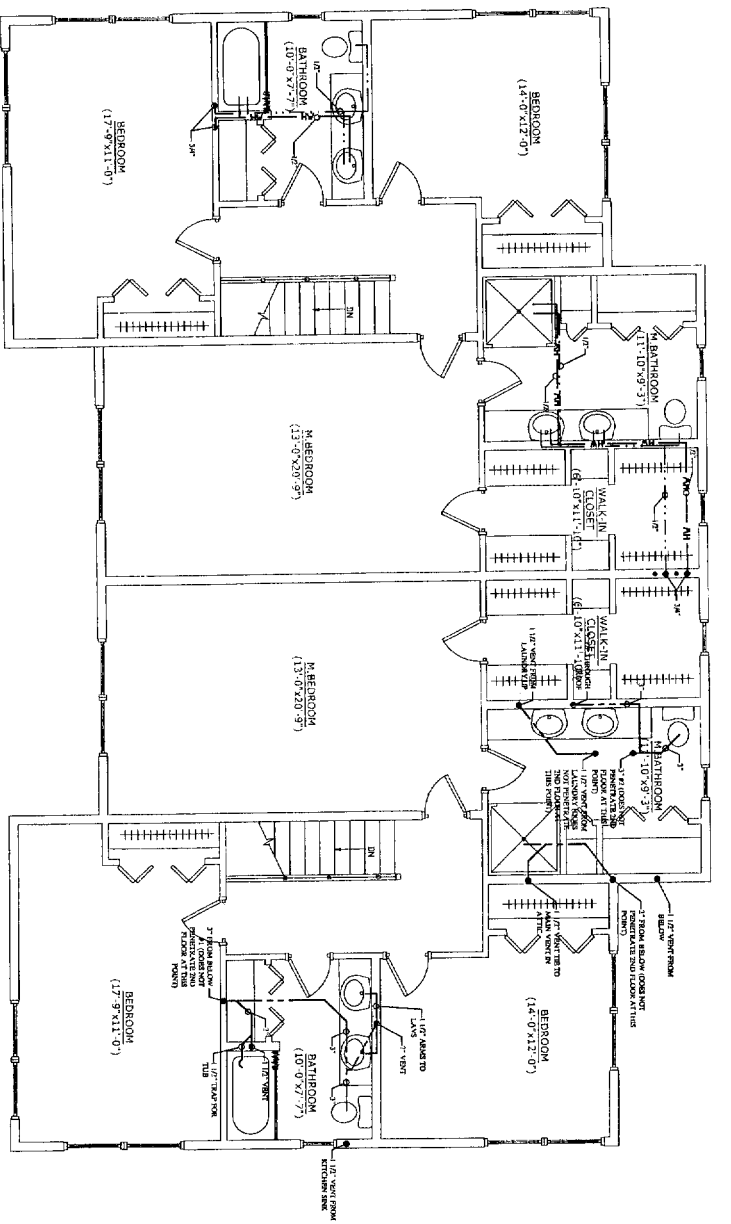
PROJECT: **JARITA COURT CONDO**
LANE AVE. PORTLAND, ME 04101

SHEET TITLE: **THERMAL MOISTURE DETAILS ISSUED FOR CONSTRUCTION**

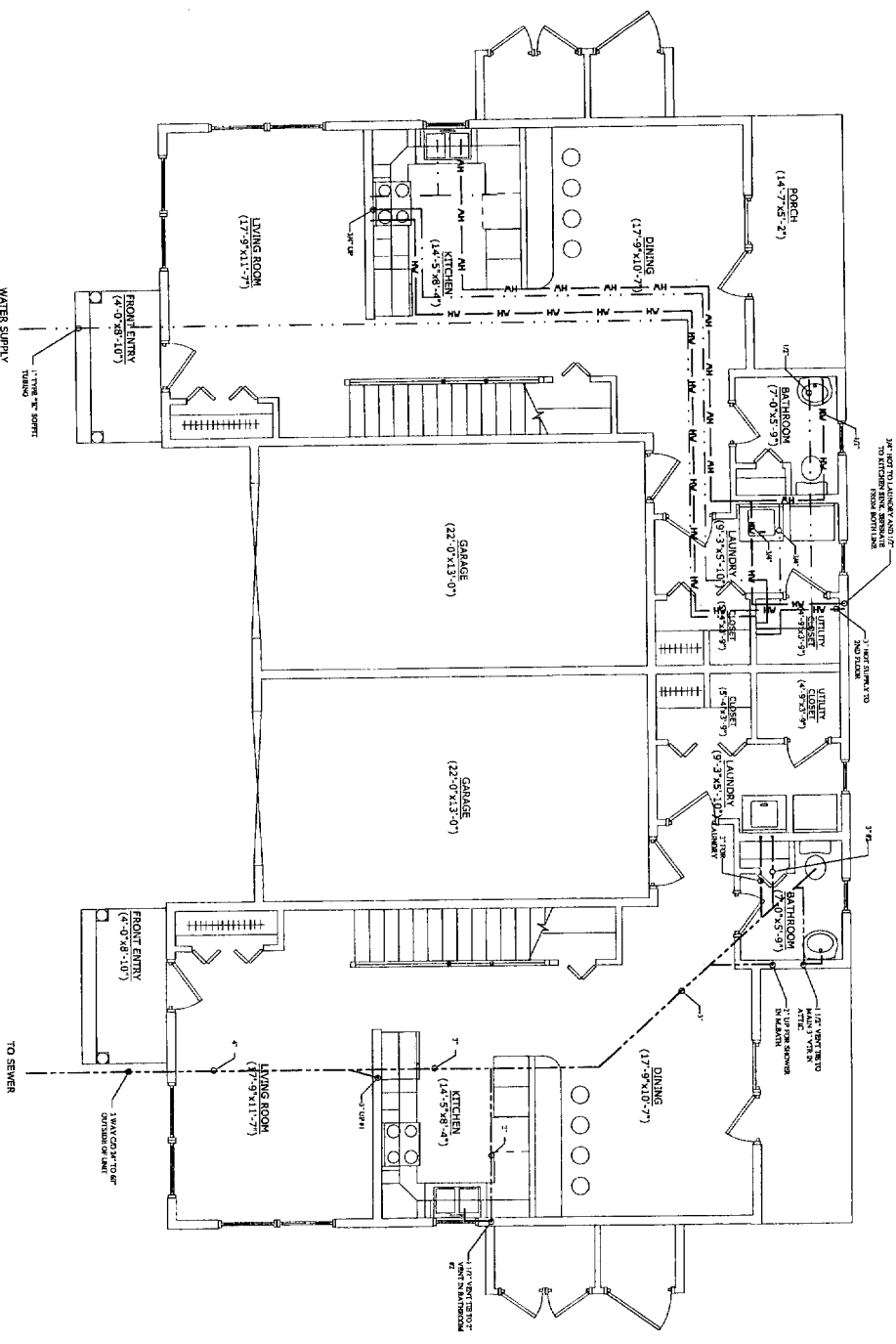
DESIGNED AND BUILT BY: **SHARP HOMES, INC.**

120 EXCHANGE STREET Office: (207) 874-6959
Portland, Maine 04101 Fax: (207) 874-6968

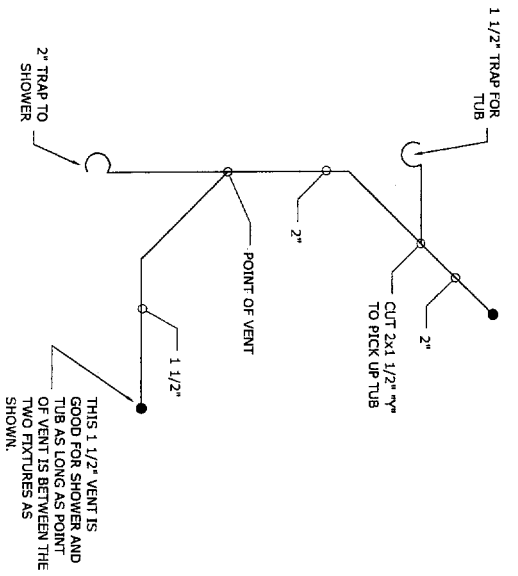
DATE: 01/04/05
SCALE: AS NOTED
FILE # 02102-JA02MG
PROJECT NUMBER:
SHEET NO.: **A 402**



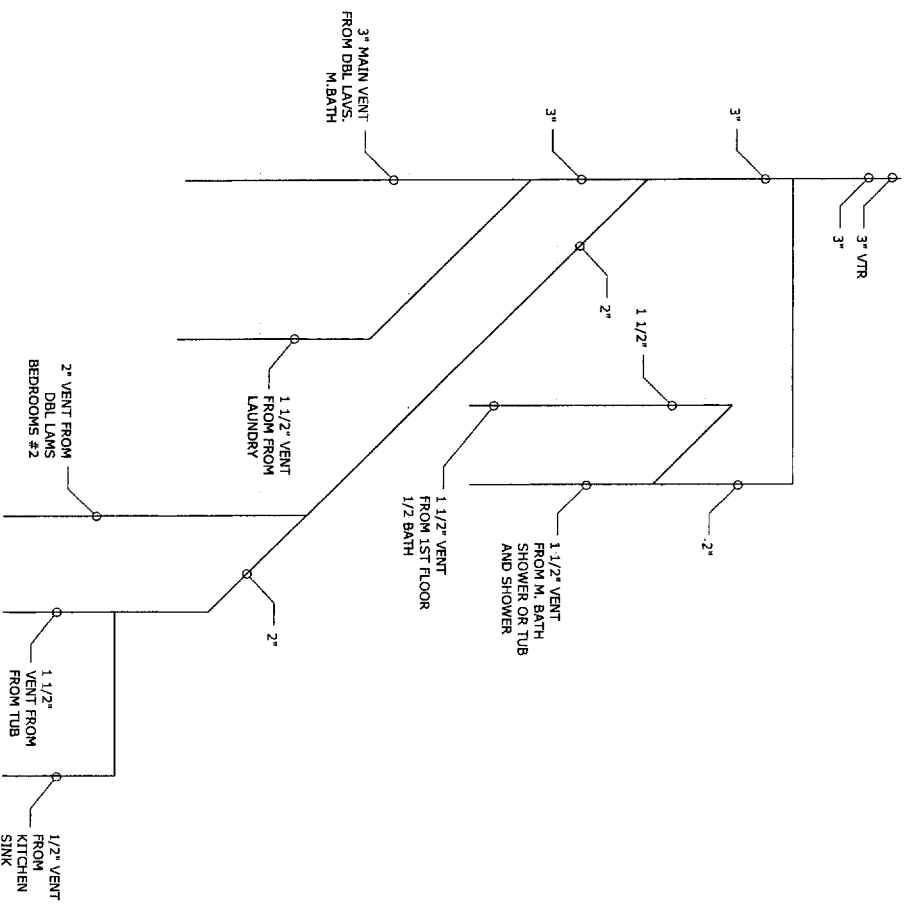
SECOND FLOOR PLUMBING PLAN
SCALE: NTS



FIRST FLOOR PLUMBING PLAN
SCALE: NTS



OPTIONAL TUB KIT
SCALE: NTS



RISER DIAGRAM
SCALE: NTS

- KEY:**
COLD WATER SUPPLY
HOT WATER SUPPLY
SEWER
- NOTES:**
1. WATER MAIN IN EACH UNIT TO BE 1" TYPE "K" SOFT TUBING.
2. FIRST FLOOR SLAB TO BE LOOPED FOR WATER DISTRIBUTION FOR THIS SOFT "L" TYPE TUBING SLEEVED W/ THIN WALL BLACK POLY WEL PIPE.
3. ON PEDESTAL SINK (BATHROOM) WATER MUST BE AS CLOSE TO INTERIOR WALL AS POSSIBLE.
4. ALTERNATE LOCATION OF MAIN WATER SUPPLY UNDER STAIRS LEAVING CLOSET OPEN.
5. HOT/COLD WATER SUPPLY INSTALLATION SAME FOR ALL UNITS.
6. SANITARY PIPING INSTALLATION SAME FOR ALL UNITS.
7. ALL VENTS CAN BE TOGETHER ON 2ND FLOOR AT EASTEST POINT AS LONG AS IT'S @ LEAST 6" OVER FLOOR LEVEL RISE OF HIGHEST FIXTURE.
8. 2ND FLOOR PLUMBING DRAWN IN PLAN VIEW AND IS IN CEILING OF 1ST FLOOR, EXCEPT WHERE THE 7 POINTS FOR FLOOR DRAINS/OR VENTS ARE NOTED.

No.	BY	DESCRIPTION	DATE
1	SH	For Construction	2/16/05

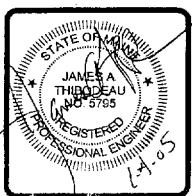
PROJECT: **JARITA COURT**
LANE AVENUE, PORTLAND
FOR: LOU WOOD

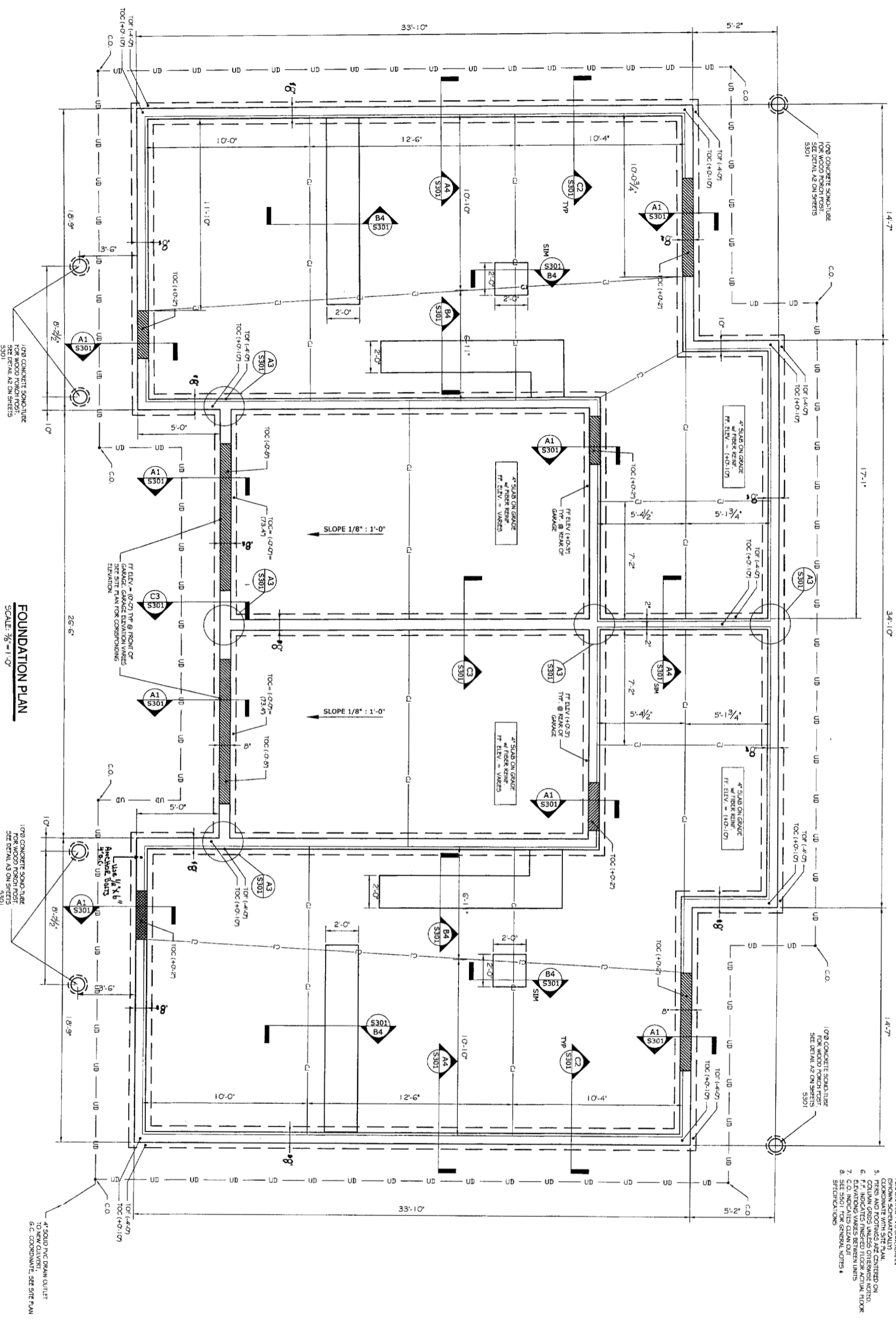
SHEET TITLE:
PLUMBING PLANS FIRST FLOOR
ISSUED FOR CONSTRUCTION

THIS DRAWING, DESIGN AND CONSTRUCTION OF ASSOCIATED DESIGN PARTNERS, INC. IS THE PROPERTY OF ASSOCIATED DESIGN PARTNERS, INC. AND IS NOT TO BE REPRODUCED OR TRANSMITTED IN ANY FORM OR BY ANY MEANS, ELECTRONIC OR MECHANICAL, WITHOUT PERMISSION IN WRITING. CONSENT IS FURNISHED.

ASSOCIATED DESIGN PARTNERS INC.

80 Leighton Road Falmouth, Maine 04105
Office: (207) 878-1751
Fax: (207) 878-1788
E-Mail: adp@adpengineering.com





- NOTES:
1. TOP INDICATES TOP OF FOOTING
 2. TOC INDICATES TOP OF CONCRETE ELEVATIONS ARE SHOWN ON GARAGE F.F. VARIAS SEE SITE PLAN
 3. C107 OF SITE PLAN DATED 05-10-04
 4. UNITS INDICATES # SCHED. 40 (SHOW SCHEDULED) COORDINATE WITH SITE PLAN
 5. PILES AND FOOTINGS ARE CENTERED ON COLUMN GRIDS UNLESS OTHERWISE NOTED.
 6. ELEVATIONS VARIAS BETWEEN UNITS
 7. C.O. INDICATED CLEAN OUT
 8. SEE S301 FOR GENERAL NOTES & SPECIFICATIONS

FOUNDATION PLAN

SCALE: 3/8" = 1'-0"

10' CONCRETE SQUARE TUBE FOR WOOD PORCH POST. SEE DETAIL A2 ON SHEETS S301

10' CONCRETE SQUARE TUBE FOR WOOD PORCH POST. SEE DETAIL A3 ON SHEETS S301

4' SOLID PRE-CAST DRAIN GUTTER TO NEW CUTTER. SEE DETAIL C.C. COORDINATE. SEE SITE PLAN

REVISIONS		
No.	BY	DATE
1	SHI	2/10/05
For Construction		

DATE: 01/24/05
 SCALE: 3/8" = 1'-0"
 DESIGN BY: JAT
 DRAWN BY: AL
 FILE # 02102.S101.DWG
 PROJECT NUMBER: 02102
 SHEET NO.: S101

PROJECT: **JARITA COURT CONDO**
 LANE AVE. PORTLAND, ME 04101
 FOR: LOU WOOD

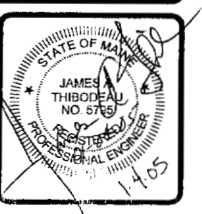
SHEET TITLE:
FOUNDATION PLAN
 ISSUED FOR CONSTRUCTION

THIS DOCUMENT IS THE PROPERTY OF ASSOCIATED DESIGN PARTNERS, INC. IT IS TO BE USED ONLY FOR THE PROJECT AND SITE SPECIFICALLY IDENTIFIED HEREIN. WRITTEN CONSENT IS REQUIRED FOR ANY OTHER USE.

ASSOCIATED DESIGN PARTNERS INC.

80 Leighton Road
 Falmouth, Maine 04105

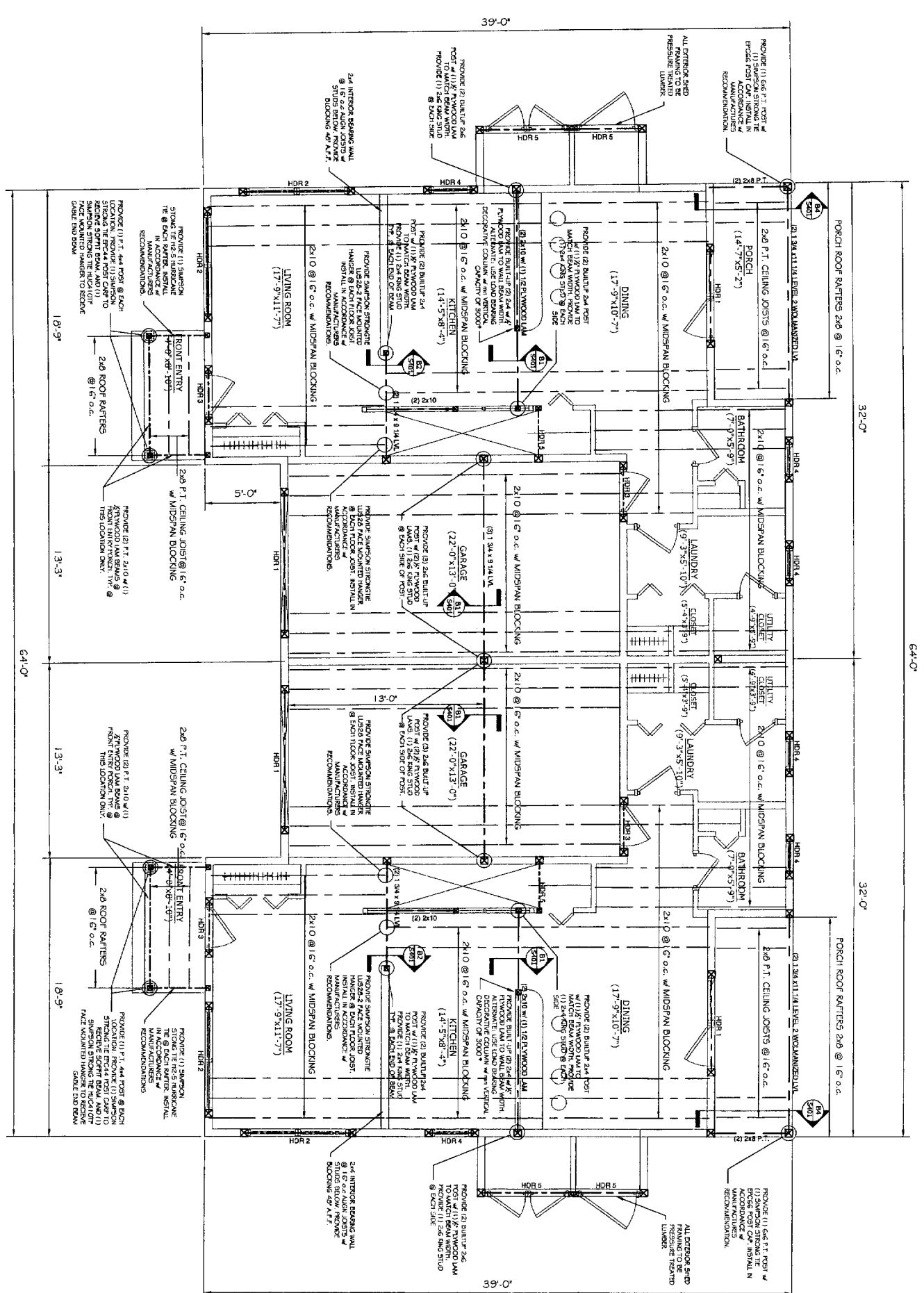
Office: (207) 878-1751
 Fax: (207) 878-1788
 E-Mail: adp@adpengineering.com



THIS P.E. REVIEW COVERS STRUCTURAL FRAMING MEMBERS; SIZES FOR NEW OR MODIFIED STRUCTURE ONLY. THERMAL MOISTURE PROTECTION, TEMPORARY SHORING AND BRACING, FRAMING CONNECTIONS (U.O.N.), COMPONENTS AND CLADDING, FINISHES, FLOOR PLAN LAYOUT, AND LIFE SAFETY CODE REQUIREMENTS HAVE NOT BEEN REVIEWED AND ARE BEYOND THE PURVIEW OF THIS P.E. SEAL.

- GENERAL STRUCTURAL NOTES:
1. ALL DIMENSIONS UNLESS OTHERWISE NOTED.
 2. ALL LVL'S ARE 1 1/2" MINIMUM UNLESS OTHERWISE NOTED. BY TRUS-JOIST MOUNTAIN OR EQUAL.
 3. BUILT-UP LVL MEMBERS HAVE BEEN SPECIFIED AS LAMINATES OF 1 1/2" WIDE MEMBERS. CONTRACTOR MAY PROVIDE AN LVL MEMBER AS A SINGLE WIDTH. BUILT-UP LVL MEMBERS TO BE NAIL TOGETHER USING (2) ROWS OF 16d x 3 1/2" NAILS IN ONE FACE FOR 3 1/2" WIDE MEMBERS & (2) ROWS OF 16d x 3 1/2" NAILS @ EACH LVL FACE.
 4. ALL STRUCTURAL LUMBER TO BE SPRUCE-PINE-FIR #2 OR BETTER. UNLESS OTHERWISE NOTED ON PLANS.
 5. ALL SPECIFIED HEADER POSTS ARE JACK STUDS. CONTRACTOR SHOULD PROVIDE (1) 2x KING STUD, UNLESS OTHERWISE NOTED.
 6. ALL DIMENSIONS UNLESS OTHERWISE NOTED.
 7. ALL DIMENSIONS UNLESS OTHERWISE NOTED.
 8. PROVIDE * INSTALL ALL SIMPSON STRONG TIE CONNECTORS AS RECOMMENDED BY MANUFACTURER.

MEMBER DESIGNATION	HEADER CONTRIBUTION	JACK STUD CONTRIBUTION	TRUSS STUD CONTRIBUTION
HDR1	(3) 1 3/4" x 5 1/2" LVL	(3) BUILT-UP 2x6	(3) BUILT-UP 2x6
HDR2	(3) 2x8 W/ (2) 1/2" PLYWOOD LAYS	(2) BUILT-UP 2x6	(2) BUILT-UP 2x6
HDR3	(3) 2x8 W/ (1) 1/2" PLYWOOD LAYS	(2) BUILT-UP 2x6	(2) BUILT-UP 2x6
HDR4	(2) 2x10 P.T. W/ (1) 1/2" PLYWOOD LAYS	(2) BUILT-UP 2x6	(2) BUILT-UP 2x6
HDR5	(2) 1 3/4" x 5 1/2" LVL	(2) BUILT-UP 2x4	(2) BUILT-UP 2x4
HDR7	(3) 1 3/4" x 5 1/2" LVL	(2) BUILT-UP 2x6	(2) BUILT-UP 2x6



SECOND FLOOR FRAMING PLAN

SCALE: 1/4" = 1'-0"

NO.	BY	DESCRIPTION	DATE
1	SH	For Construction	2/10/15
2			
3			
4			

DATE: 01/04/05
 SCALE: AS NOTED
 DESIGN BY: JAT
 DRAWN BY: AL
 FILE # 10102.S01.DWG
 PROJECT NUMBER:
02102
 SHEET NO.:
S201

PROJECT: **JARITA COURT CONDO**
 LANE AVENUE, PORTLAND
 FOR: LOU WOOD
 SHEET TITLE:
FRAMING PLAN
 ISSUED FOR CONSTRUCTION

THE DRAWING, SPECIFICATIONS AND EXHIBITS ARE THE PROPERTY OF ASSOCIATED DESIGN PARTNERS INC. AND ARE TO BE REPRODUCED OR TRANSMITTED IN ANY FORM OR BY ANY MEANS WITHOUT THE WRITTEN CONSENT OF ASSOCIATED DESIGN PARTNERS INC.

ASSOCIATED DESIGN PARTNERS INC.
 80 Leighton Road
 Falmouth, Maine 04105
 Office: (207) 878-1751
 Fax: (207) 878-1788
 E-Mail: adp@adpengineering.com

