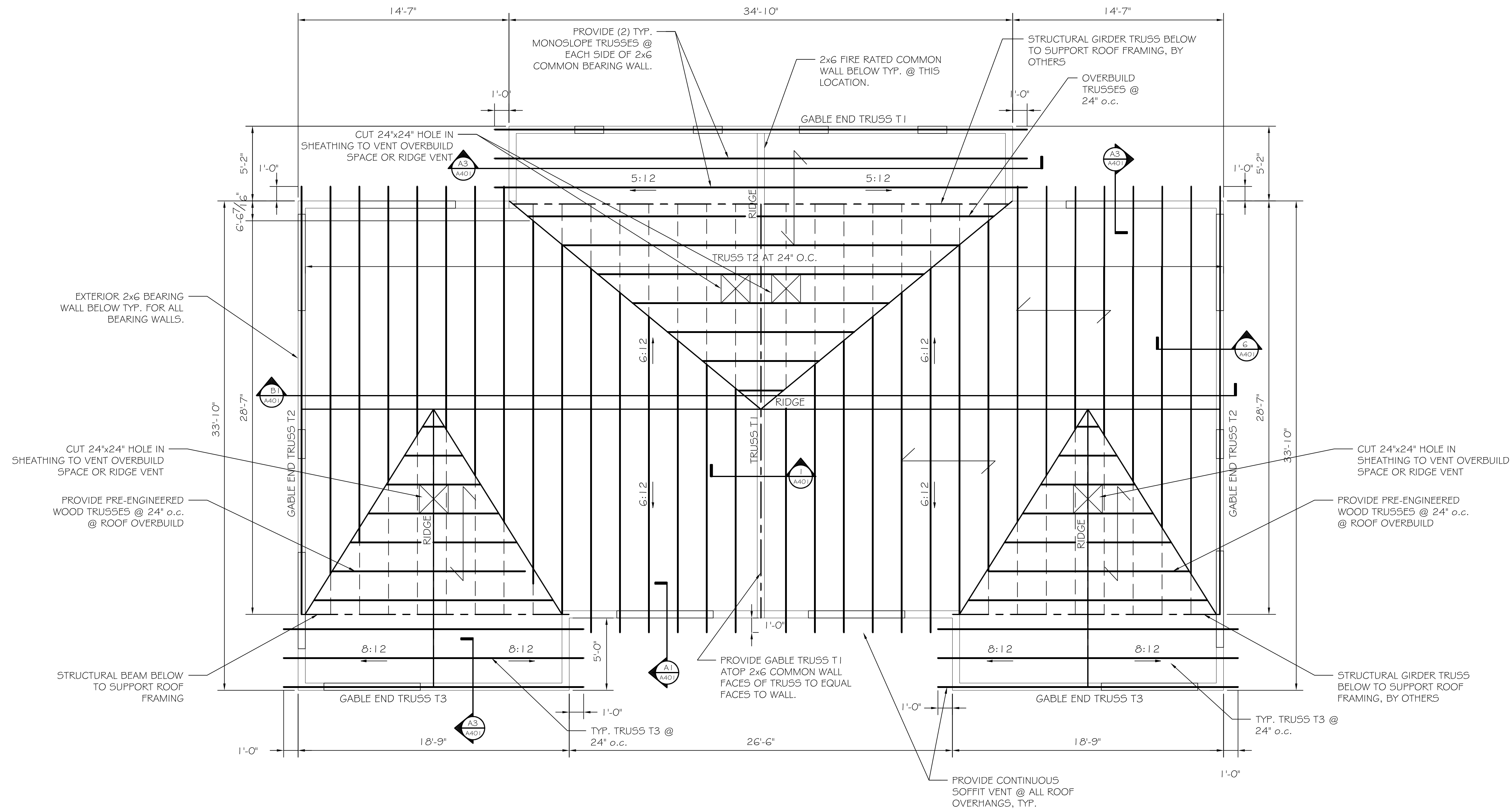


NOTES:

- ← INDICATES SPAN OF APA SPAN RATED 32/16 ROOF SHEATHING. FASTEN TO SUPPORTS W/ 8d NAILS AT 6" O.C. AT EDGES, 12" O.C. AT INTERMEDIATE SUPPORT.
- SEE WOOD TRUSS MANUFACTURERS REQUIREMENT # SHEET S203 FOR TRUSS BRACING.
- NOTIFY ENGINEER TO CONDUCT SITE INSPECTION AFTER TRUSSES & BRACING ARE INSTALLED.
- SEE S302 FOR TRUSS LOADING DIAGRAM.
- SEE S204 FOR 2ND FLOOR WINDOW HEADERS.



**ROOF FRAMING PLAN**  
SCALE: 1/4" = 1'-0"

**ASSOCIATED DESIGN PARTNERS INC.**  
80 Leighton Road  
Falmouth, Maine 04105  
Office: (207) 878-1751  
Fax: (207) 878-1788  
E-Mail: ocp@adpengineering.com

THIS DRAWING, DESIGN AND ELECTRONIC FILE ARE THE PROPERTY OF ASSOCIATED DESIGN PARTNERS, INC. THE REPRODUCTION, COPYING OR ANY OTHER USE OF THIS DOCUMENT WITHOUT WRITTEN CONSENT IS PROHIBITED.

PROJECT: **JARITA COURT CONDO**  
**LANE AVENUE, PORTLAND**  
FOR: LOU WOOD  
SHEET TITLE: **ROOF FRAMING PLAN**  
**ISSUED FOR CONSTRUCTION**

REVISIONS	DESCRIPTION	DATE
No.	BY	
1	AL	
2	AL	
3	AL	
4	AL	

DATE : 01/04/05  
SCALE : AS NOTED  
DESIGN BY: JAT  
DRAWN BY: AL  
FILE #: 02102.S202.DWG  
PROJECT NUMBER:  
**02102**  
SHEET NO:  
**S202**