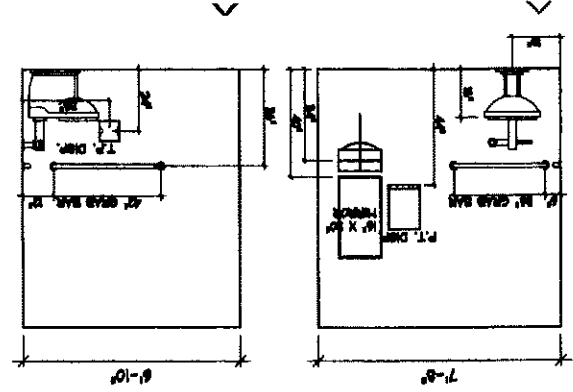
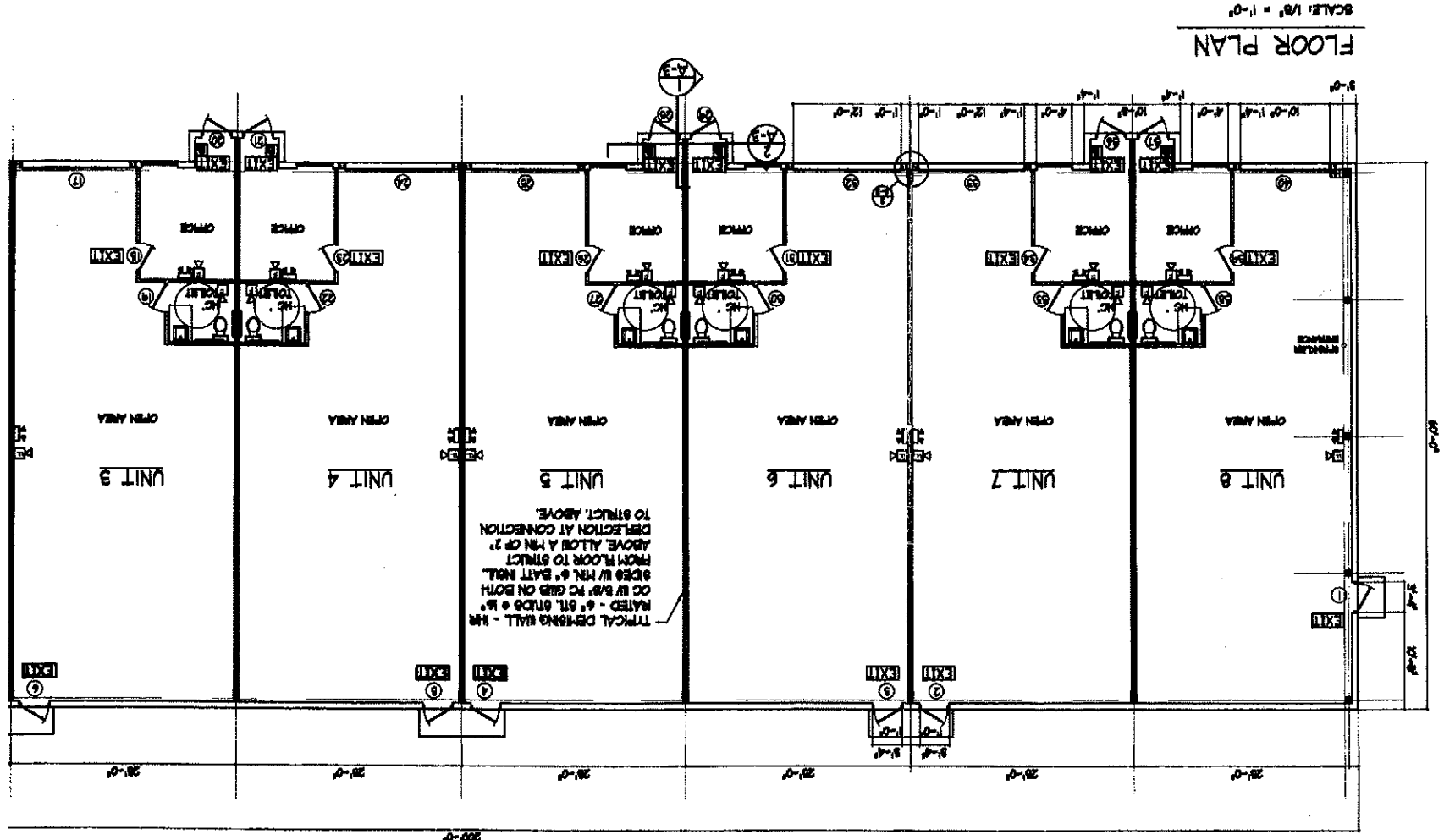


REQUESTING
CFO
for
Unit #6



- 71 WP 48 8/8" (18.8mm) Pre-stressed Aggrum Hollowed or 8/8" (18.8mm) Pre-stressed HR Band steel deck, 24"x48" (610x1219mm) All unbraced joists designed.
- 6A WP 1200 8/8" (18.8mm) Pre-stressed HR Band steel deck, 24"x48" (610x1219mm) in both sides 8 8/8" (213mm) steel studs, 24"x48" (610x1219mm) All unbraced joists designed.
- 68U T-1770 8/8" (18.8mm) Pre-stressed Aggrum Hollowed or 8/8" (18.8mm) Pre-stressed HR Band steel deck, 24"x48" (610x1219mm) in both sides 8 8/8" (213mm) steel studs, 24"x48" (610x1219mm) All unbraced joists designed.
- 47 1/2" (38.1mm) Hollowed joist design.
- UL U468 8/8" Gold Band Fire-Shield C Hollowed steel deck, 24"x48" (610x1219mm) in the field of the beam to 8-8/8" (213mm) steel studs spaced vertically with fasteners 8" o.c. at edges and 12" o.c. maximum 24" o.c. with joists staggered on opposite sides of the wall. "Insert" UL on Part 3 "U-468" on Design No.



