

CUSTOMER:

B & L PARTNERS

PROJECT:

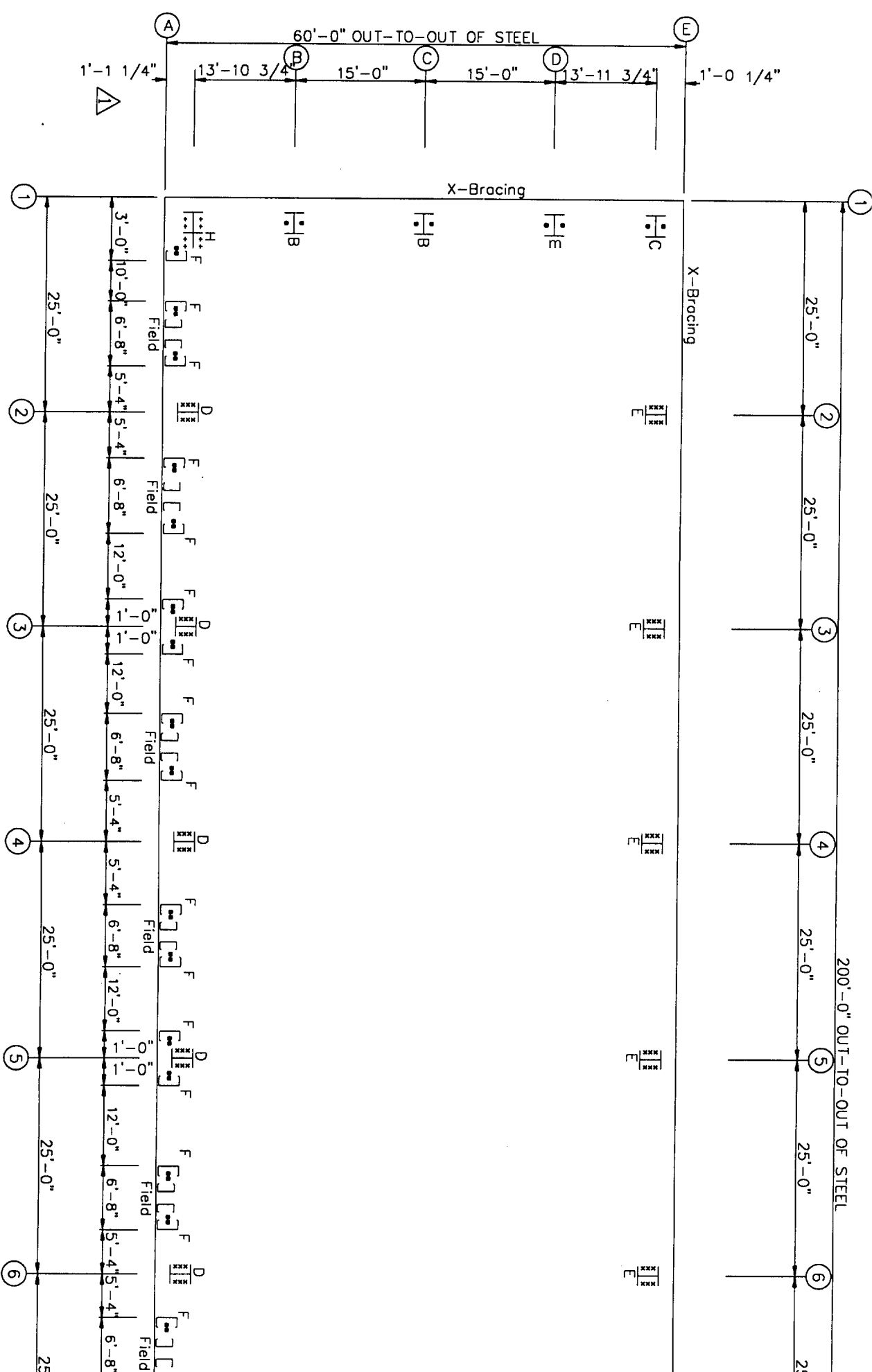
B & L PARTNERS

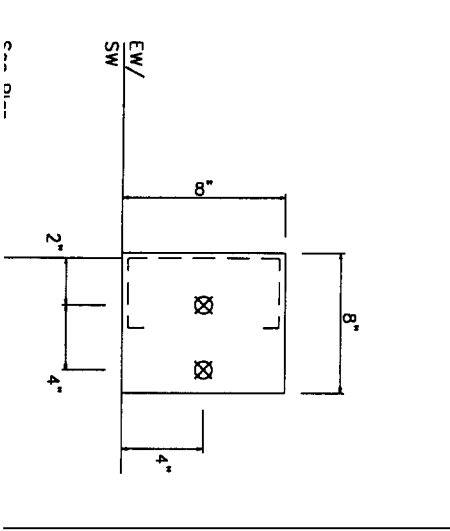
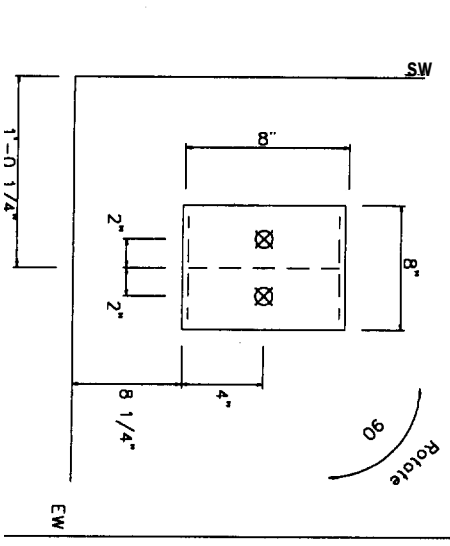
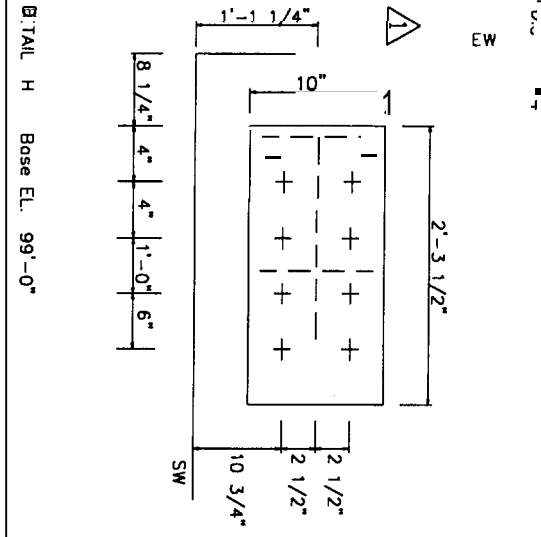
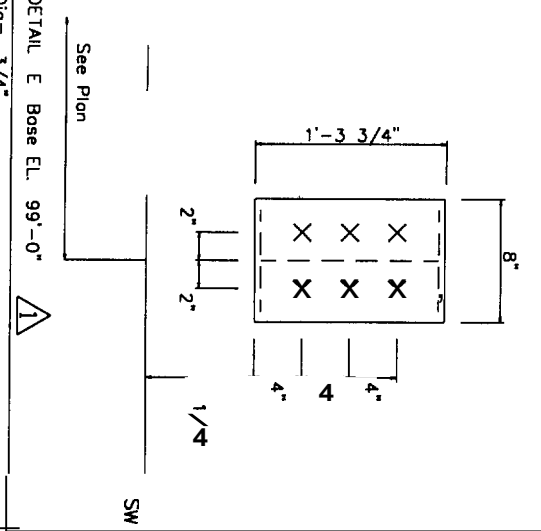
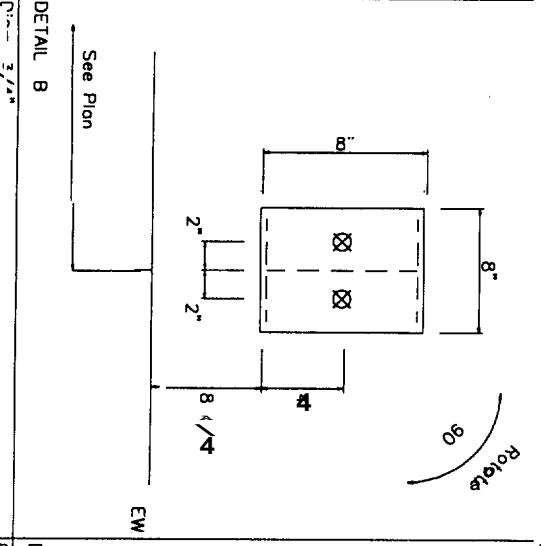
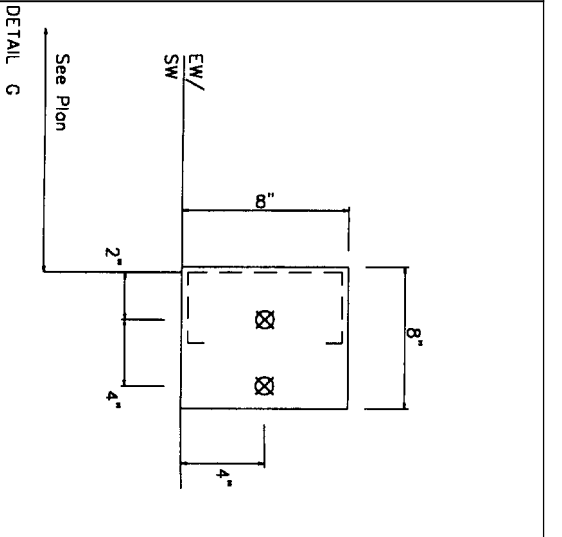
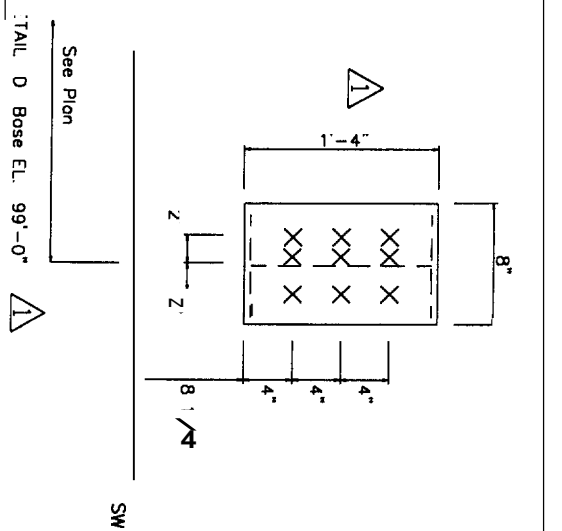
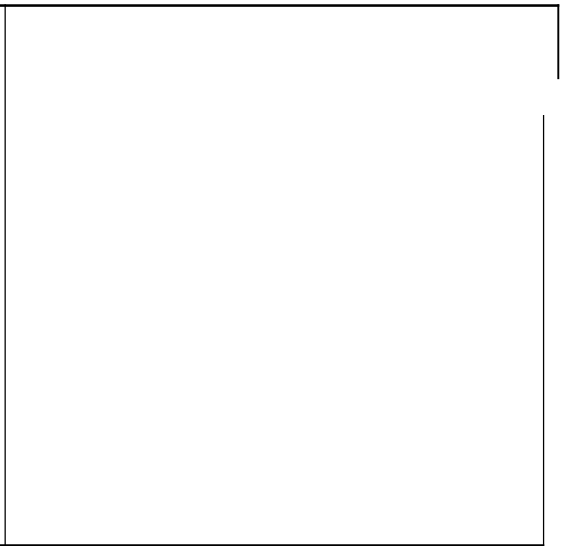
LOCATION:

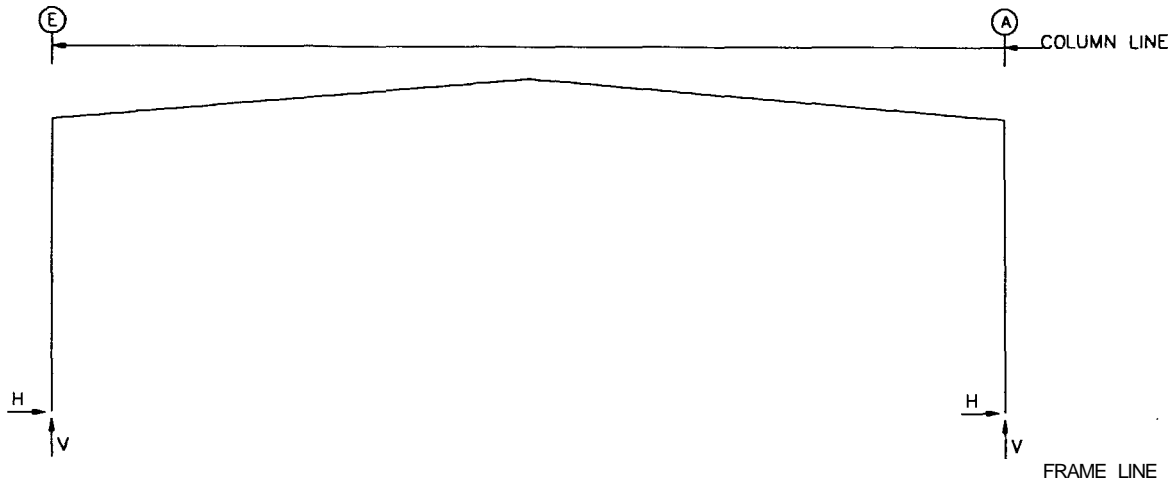
PORTLAND, MAINE

JOB NUMBER:

D5-140







RIGID FRAME: ANCHOR BOLTS & BASE PLATES

From Line	Col Line	Anc. No	Bolt D(in)	Base Plate Wid	Base Plate Len	Base Plate Thk	Grout (in)
2 *	E	6	1.000	8.000	15.75	0.500	0.0
2 *	A	6	1.000	8.000	16.00	0.500	0.0

A

2 * Frome lines: 2 3 4 5 6 7 8

VOTES FOR REACTIONS

- All loading conditions are examined and only maximum/minimum H or V and the corresponding H or V are reported.
- Positive reactions are as shown in the sketch. Foundation loads are in opposite directions.
- Bracing reactions are in the plane of the brace with the H pointing away from the braced bay. The vertical reaction is downward.
- Building reactions are based on the following building data:

Width (ft) = 60.0
 Length (ft) = 200.0
 Eave Height (ft) = 18.0/18.0
 Roof Slope (rise/12) = 1.0/1.0
 Dead Load (psf) = 4.0
 Collateral Load (psf) = 5.0
 Live Load (psf) = 20.0
 Snow Load (psf) = 50.0
 Wind Speed (mph) = 100.0
 Wind Code = IBC
 Exposure = C
 Closed/Open = C
 Importance - Wind = 1.00
 Importance - Seismic = 1.00
 Seismic Coeff (Fa*Ss) = 0.56

5. Loading conditions are:

- DL+CL+LL
- DL+WL1
- DL+WR1
- DL+WL1+WS
- DL+WP+LnWndL
- DL+WR1+WS

RIGID FRAME: A SPECIFIED COLUMN REACTI

From Line	Column Line	DEAD Horiz	DEAD Vert	COLLATERAL Horiz	COLLATERAL Vert	LIVE/SNOW Horiz	LIVE/SNOW Vert
2 *	E	2.18	4.70	2.11	3.76	21.04	37.46
2 *	A	-2.18	4.76	-2.11	3.77	-21.04	37.54

From Line	Column Line	WIND_R-INP Horiz	WIND_R-INP Vert	SEISMIC-L Horiz	SEISMIC-L Vert	SEISMIC=R Horiz	SEISMIC=R Vert
2 *	E	-0.89	-2.90	-1.48	-0.86	1.48	0.86
2 *	A	6.78	-7.14	-1.48	0.86	1.48	-0.86

From Line	Column Line	LnSeis Horiz	LnSeis Vert
2 *	E	0.00	0.00
2 *	A	0.00	0.00

2 * Frome lines: 2 3 4 5 6 7 8

ENDWALL COLUMN: REACTIONS. ANCHOR BOLTS. & BASE

From Line	Col Line	Dead Vert	Coll Vert	Live Vert	Wind-Left Horiz	Wind-Left Vert	Wind-Right Horiz	Wind-Right Vert	Out Wd Horiz
1	A	0.9	0.4	4.0	0.0	-1.1	0.0	-1.8	-1
1	B	1.3	1.1	10.8	0.0	-2.7	0.0	-4.9	-2
1	C	1.1	0.9	9.4	0.0	-3.2	3.4	-7.1	-2
1	D	1.3	1.1	10.8	3.4	-8.8	0.0	-2.7	-2
1	E	0.6	0.4	4.0	0.0	-1.8	0.0	-1.1	-1
9	A	0.9	0.4	4.0	0.0	-1.8	0.0	-1.1	-1
9	B	1.3	1.1	10.8	3.4	-8.8	0.0	-2.7	-2
9	C	1.1	0.9	9.4	0.0	-3.2	3.4	-7.1	-2
9	D	1.3	1.1	10.8	0.0	-2.7	0.0	-4.9	-2
9	E	0.6	0.4	4.0	0.0	-1.1	0.0	-1.8	-1

BRACING REACTIONS, PANEL SHEAR

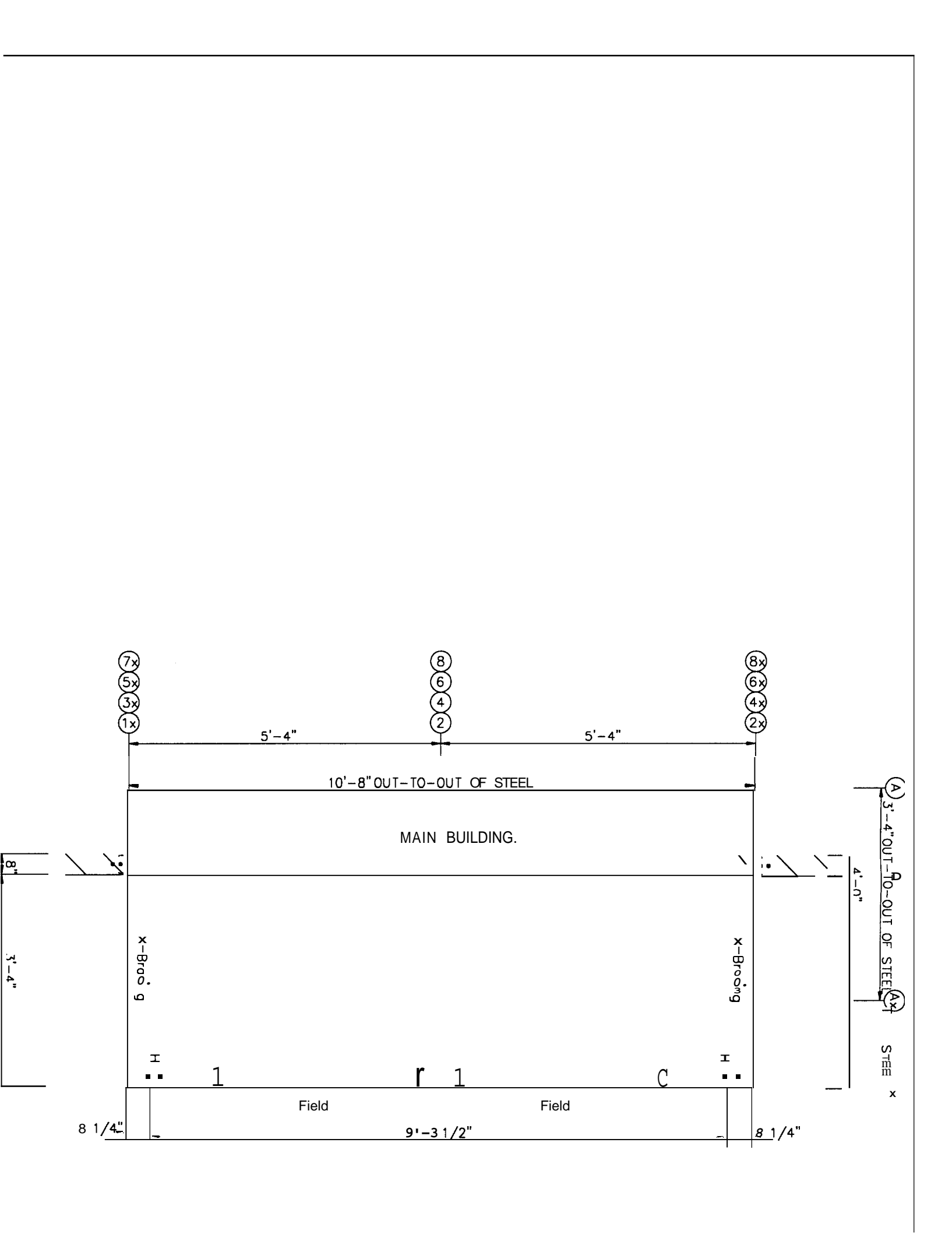
Wall Lac	Col Line	± Reactions (k) Horiz	± Reactions (k) Vert	Panel Shear (lb/ft)
L_EW	1 D	3.4	3.9	2.2
	C	3.4	3.9	2.2
F_SW	A Wind Column	3.4	3.9	2.2
R_EW	9 B	3.4	3.9	2.2
	C	3.4	3.9	2.2
B_SW	E	2.3	1.5	10.6
	D	2.3	1.5	10.6

ANCHOR BOLT SUMMARY

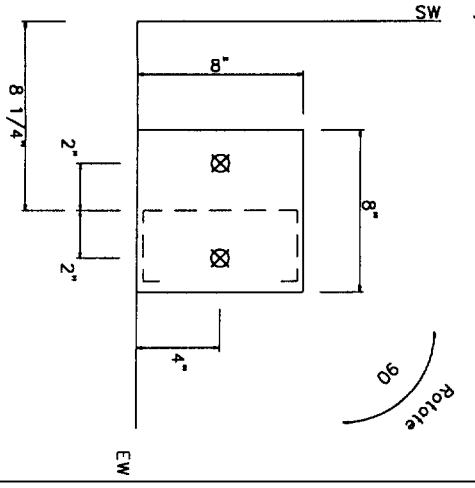
Qnt	Loc	Dia (in)	Proj (in)
48	DJ	3/4"	2.50
16	EW	3/4"	2.50
84	RF	1"	3.00
16	WF	1 1/4"	3.50

WIND COLUMN REACTIONS

Col Line	R/L	Load Id	± Reactions (k) Horiz	± Reactions (k) Vert
F-SW A	1 R	Wind	2.29	21.34
		Seismic	7.59	70.84
F-SW A	9 L	Wind	2.29	21.34
		Seismic	7.59	70.84



Dia = 3/4"



DETAIL H Bose EL. 103'-4"

ENDWALL COLUMN: REACTIONS, ANCHOR BOLTS, & BASE PLATES

----- Column-Reactions (k)-----

Frm Line	Col Line	Oeod Vert	Coll Vert	Live Vert	Wind-Left		Wind-Right		Out-Of-Plane		Anc. Bolt NoD(in)	Base Plote (in)			Grout (in)	
					Horiz	Vert	Horiz	Vert	Wd P Horiz	Wd S Horiz		Wd	Len	Thk		
2	A	0.2	0.1	2.4	0.0	-0.1	0.0	-0.3	-0.2	0.3	2	0.750	8.000	8.000	0.375	0.0
2	B	0.2	0.1	2.4	0.0	-0.3	0.0	-0.1	-0.2	0.3	2	0.750	8.000	8.000	0.375	0.0

BRACING REACTIONS, PANEL SHEAR

Wall-Lo ~ Line	Col Line	± Reactions (k)				Panel Shear (lb/ft)
		Wind-Horz	Wind-Vert	Seismic-Horz	Seismic-Vert	
F-SW A	1,2	0.5	1.0	0.2	0.3	
B_SW B	2,1	0.5	1.0	0.2	0.3	

ANCHOR BOLT SUMMARY

Qnt	Loc	Oio (in)	Proj (in)
16	EW	3/4"	2.50

NOTES FOR REACTIONS

- All loading conditions are examined and only maximum/minimum corresponding H or V are reported.
- Positive reactions are as shown in the sketch. Foundation loads opposite directions.
- Bracing reactions are in the plane of the brace with the H pc from the braced bay. The vertical reaction is downward.
- Building reactions are based on the following building data:
 - Width (ft) = 10.7
 - Length (ft) = 4.0
 - Eave Height (ft) = 9.8 / 9.8
 - Roof Slope (rise/12) = 8.0 / 8.0
 - Oeod Load (psf) = 4.0
 - Collateral Load (psf) = 5.0
 - Live Load (psf) = 20.0
 - Snow Load (psf) = 115.4
 - Wind Speed (mph) = 100.0
 - Wind Code = IBC
 - Exposure = C
 - Closed/Open = C
 - Importance - Wind = 1.00
 - Importance - Seismic = 1.00
 - Seismic Coeff (F_a*S_s) = 0.56
- Loading conditions are:
 - 1 0.60DL+WR1+WS
 - 2 0.60DL+WP+LnWndL
 - 3 0.60DL+WL1+WS

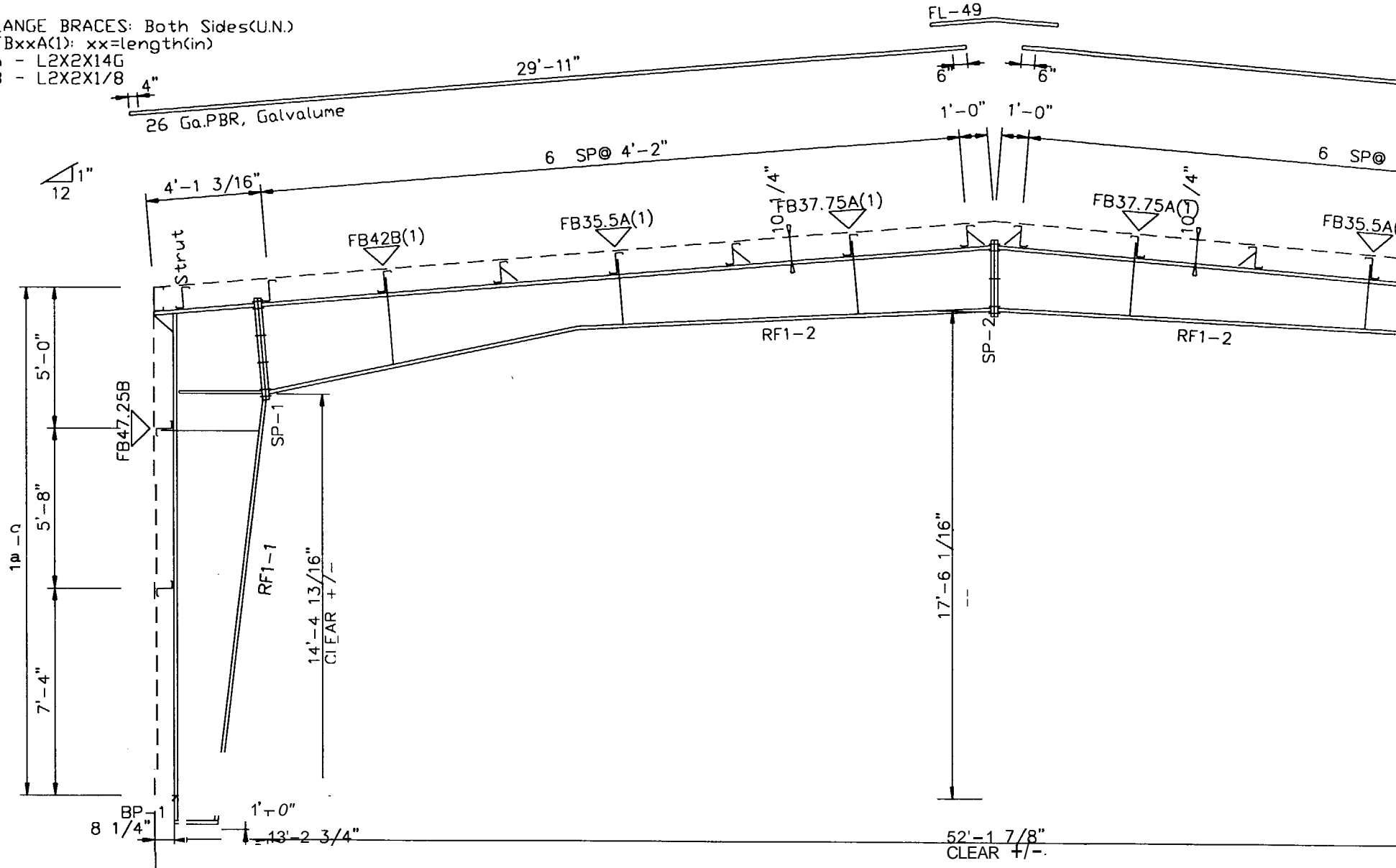
Splice Mark	Quon			Bolt			Plate Size		
	Top	Bot	Int	Type	Dio	Len	Wid	Thick	Length
SP- 1	4	4	4	A325	1.000	3.00	8"	3/4"	3'-7 5/8"
SP- 2	4	4	2	A325	0.750	3.00	6"	3/4"	2'-7 1/2"

PIECE
RF1-1
RF1-2
RF1-3

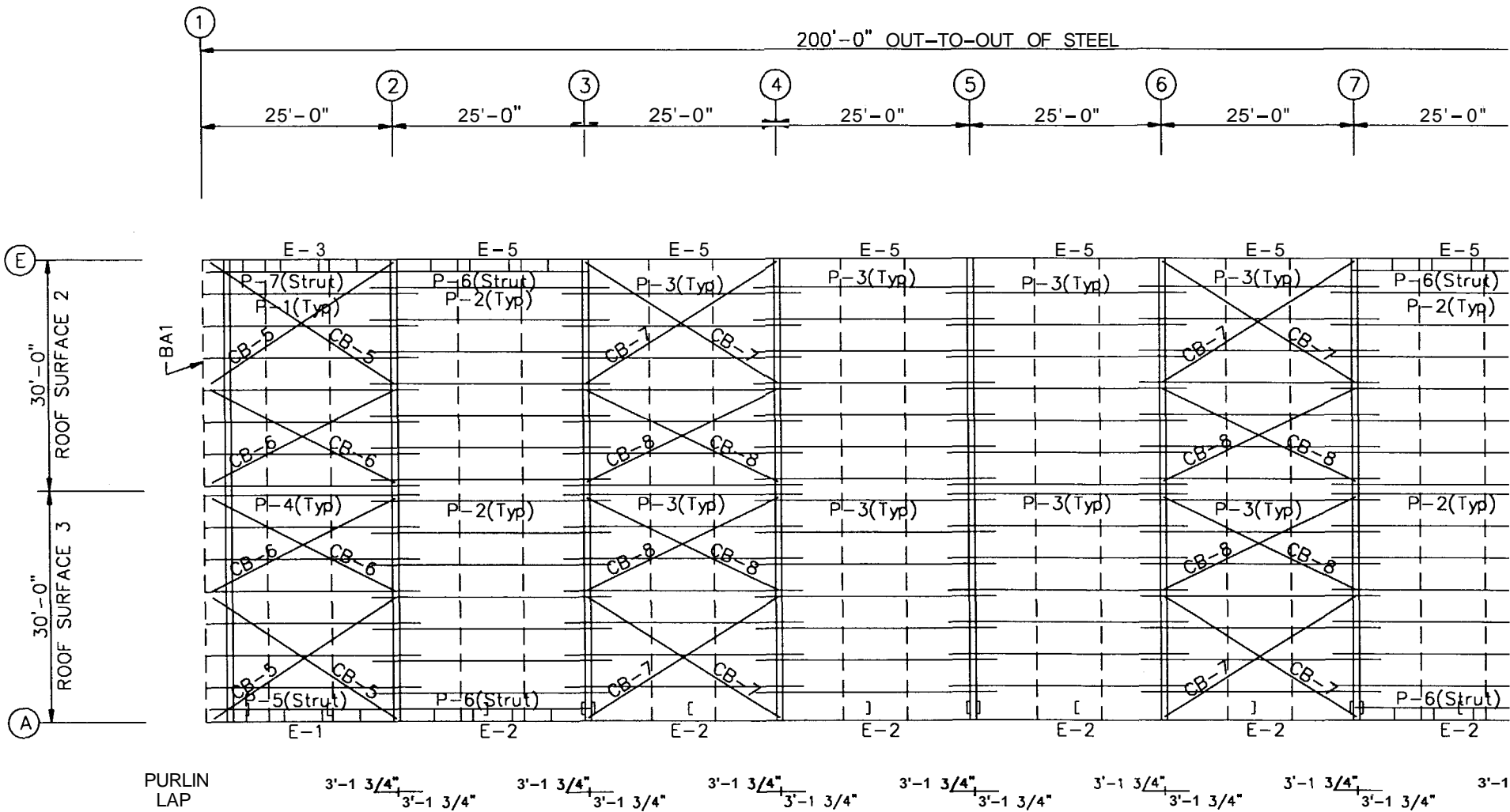
Col Id	Plate Size		
	Wid	Thick	Length
BP- 1	8"	1/2"	1'-3 3/4"
BP- 2	8"	1/2"	1'-4"

A

✓ FLANGE BRACES: Both Sides (U.N.)
 FBxxA(1): xx=length(in)
 A - L2X2X1/4G
 B - L2X2X1/8



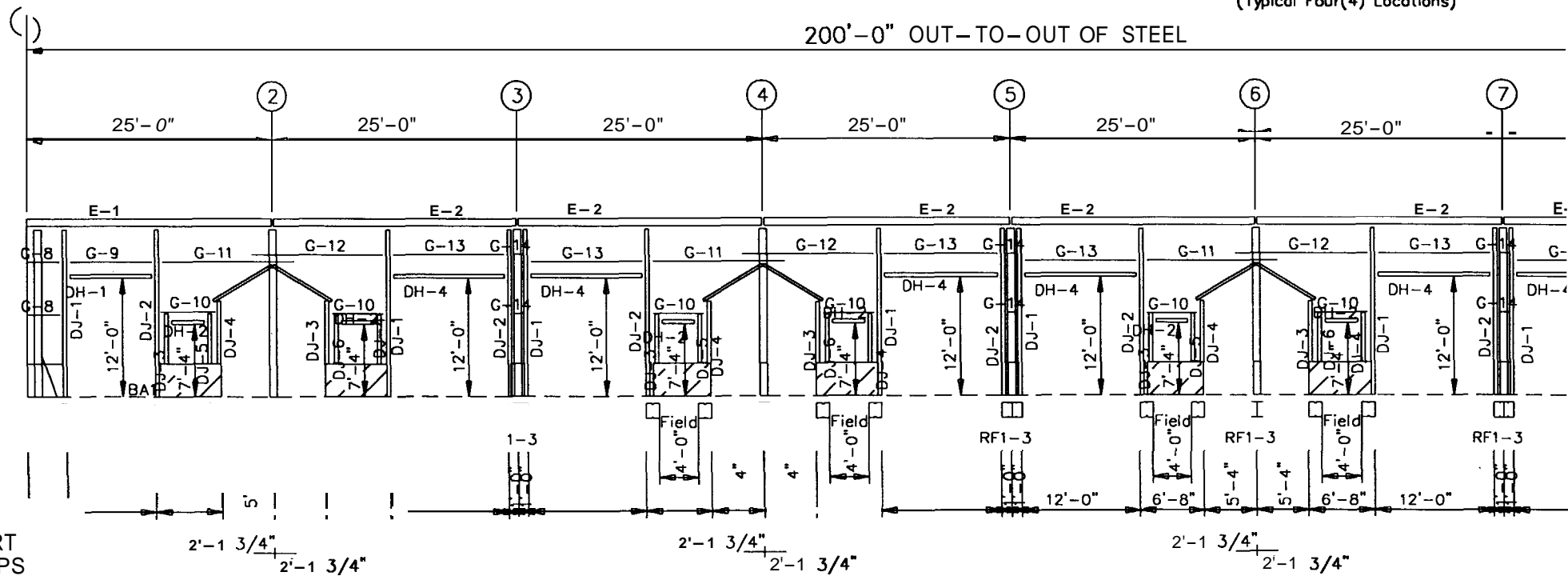
COL 2" CUT TO CUT OF STEEL



ROOF FRAMING PLAN

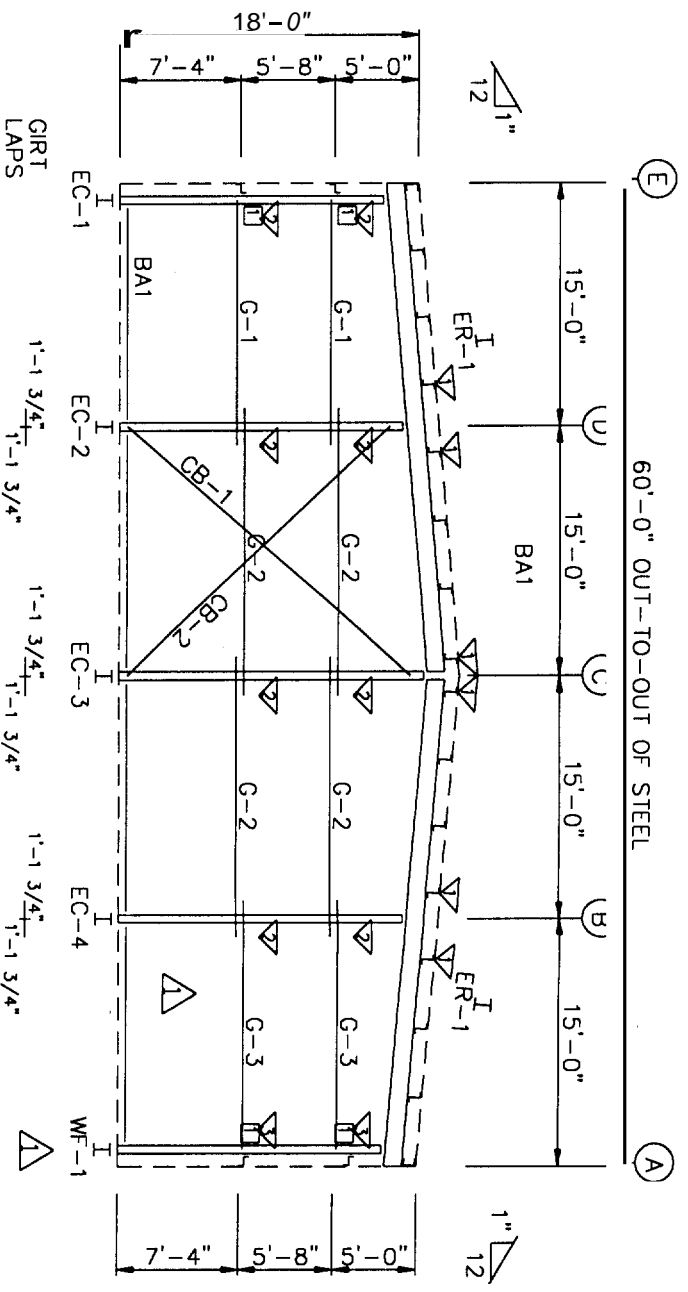
Refer To Endwall Framing: Frame Line A
Of Entrance Vestibule For Details
(Typical Four(4) Locations)

200'-0" OUT-TO-OUT OF STEEL

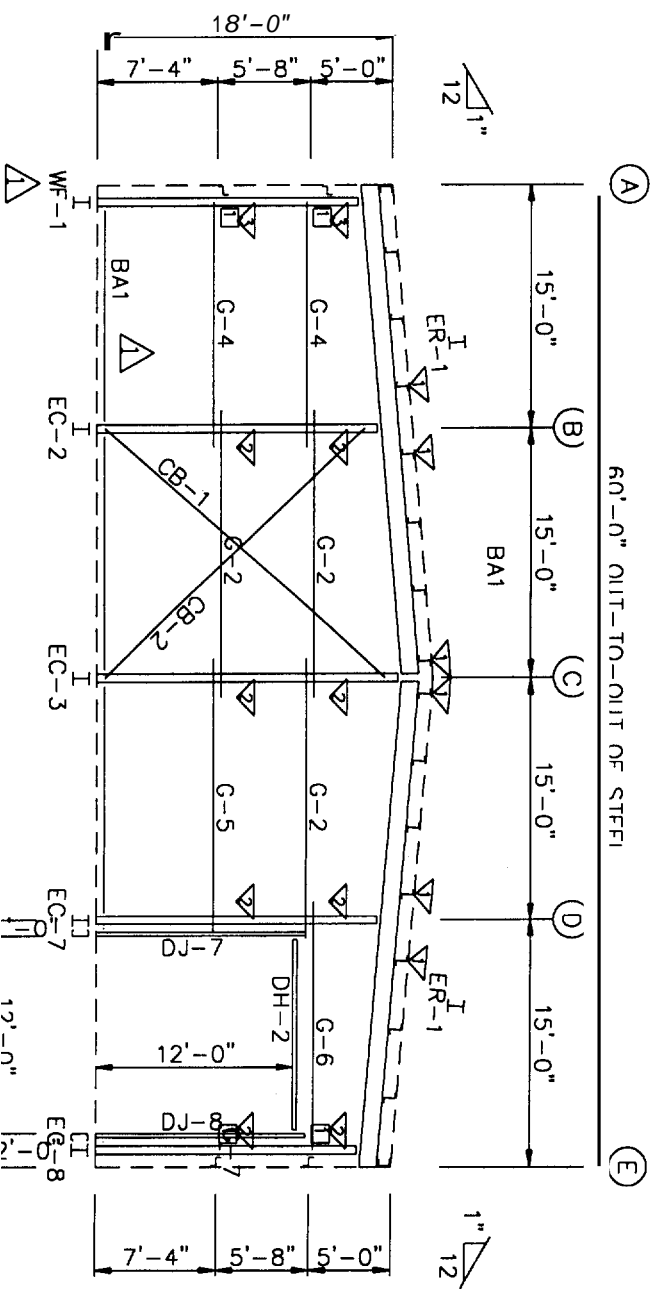


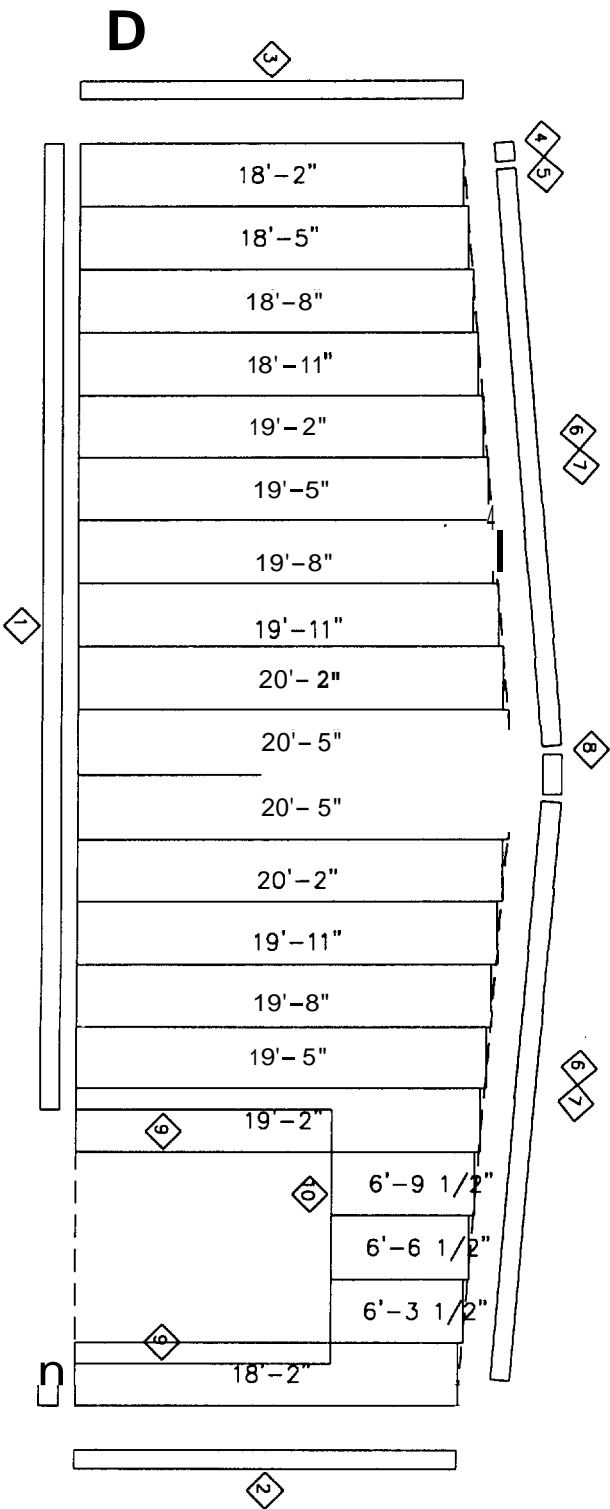
GIRT
LAPS

SIDEWALL FRAMING: FRAME LINE A

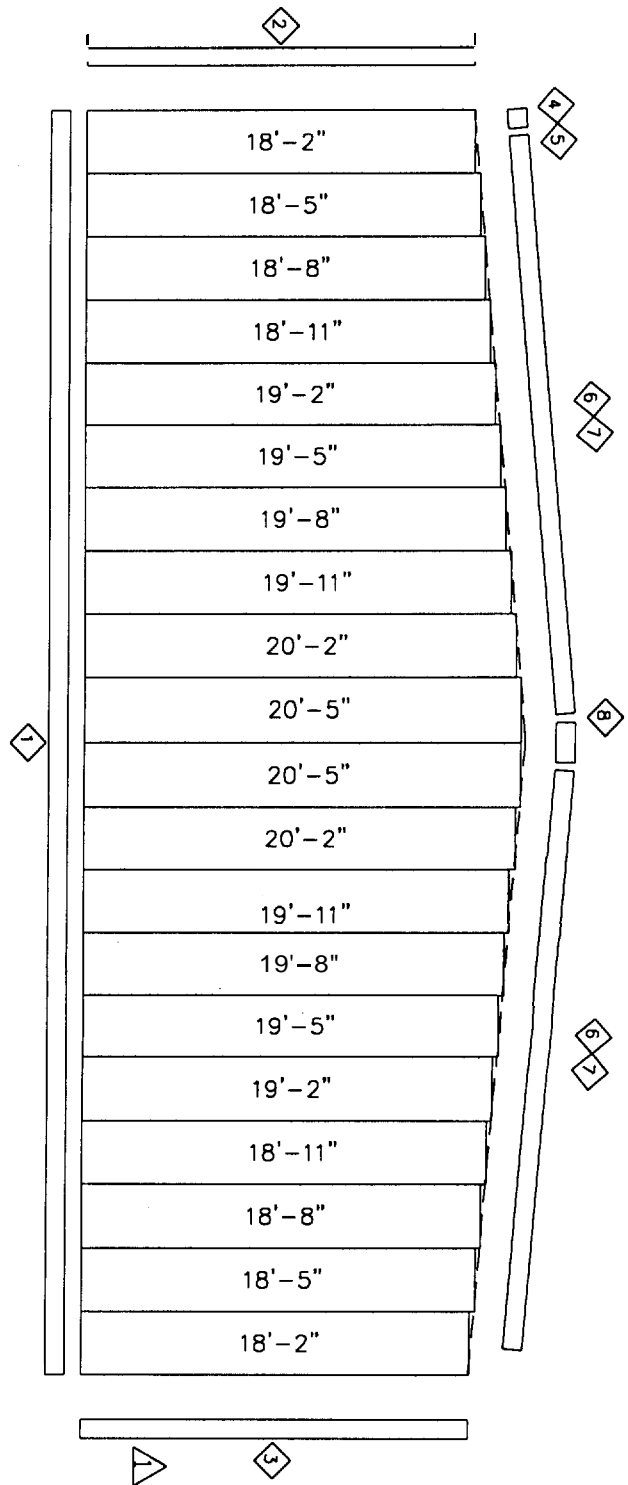


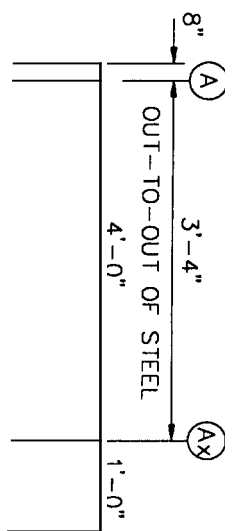
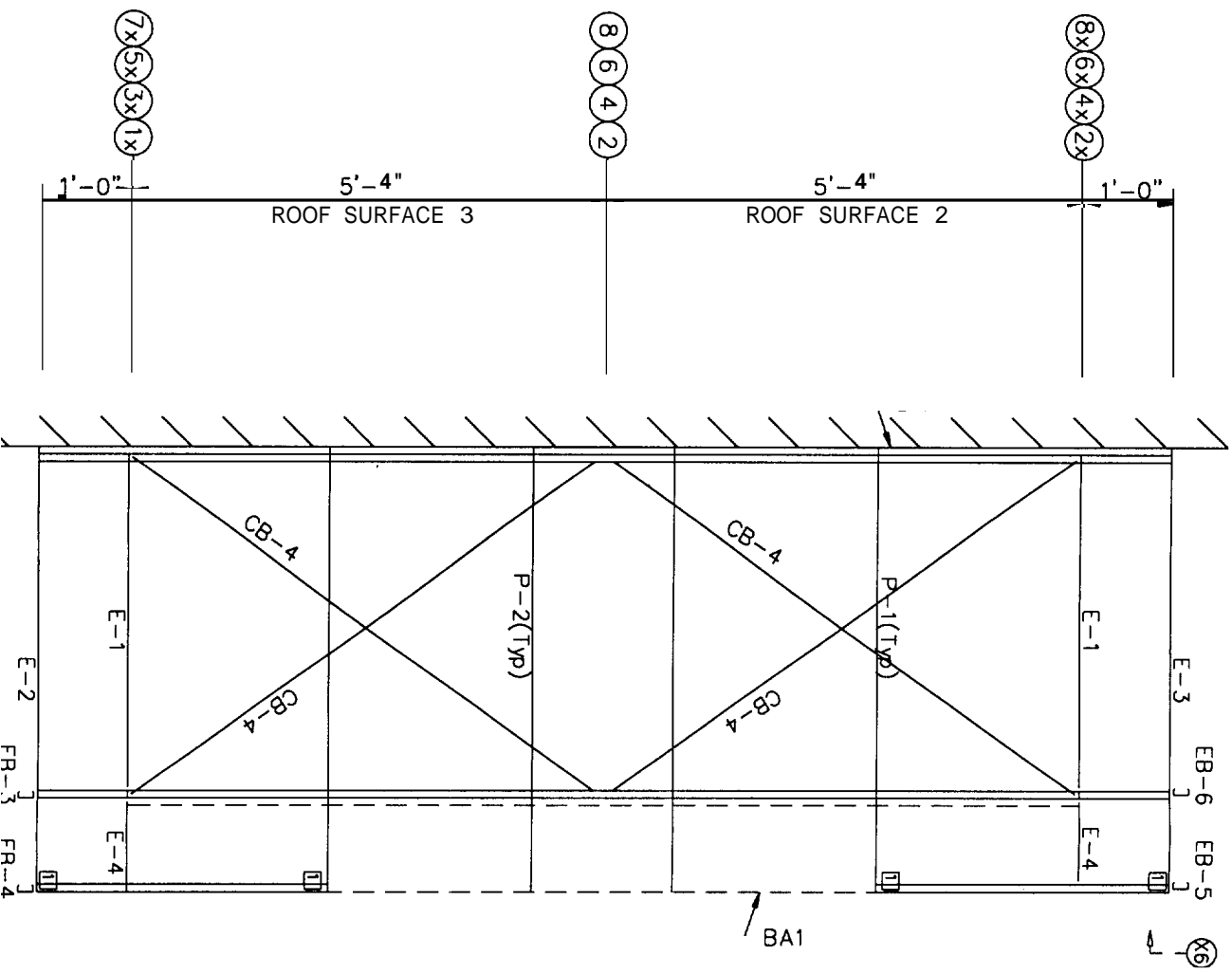
ENDWALL FRAMING: FRAME LINE 1

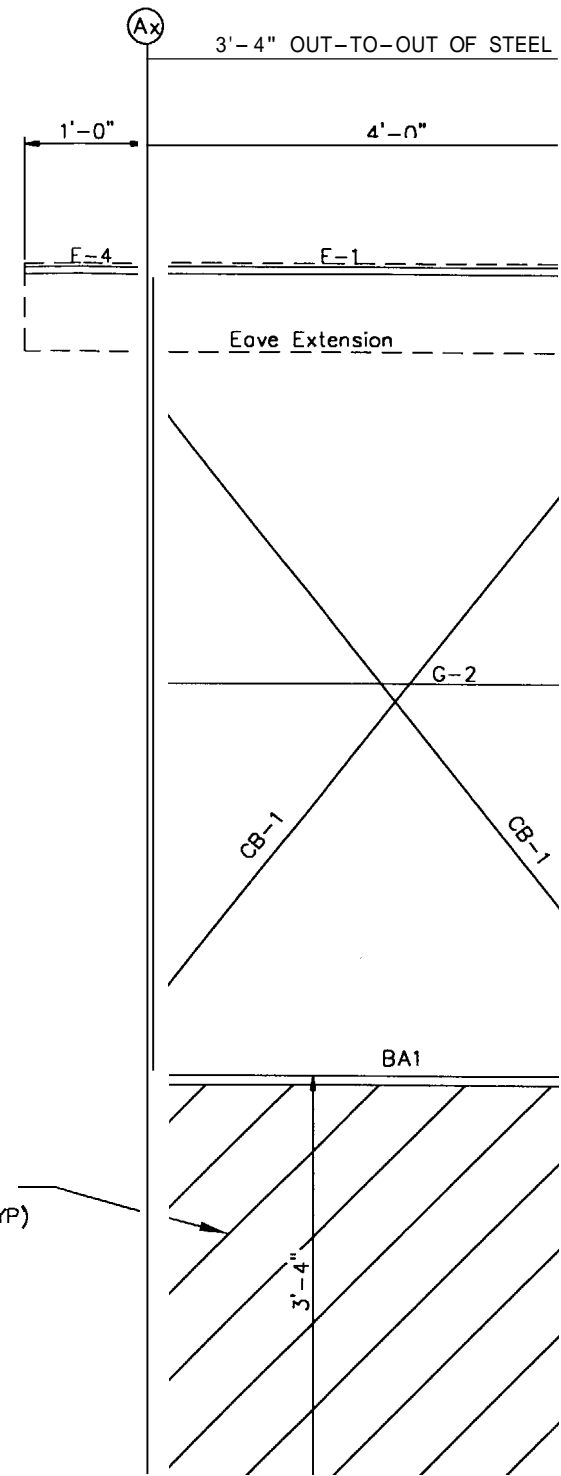
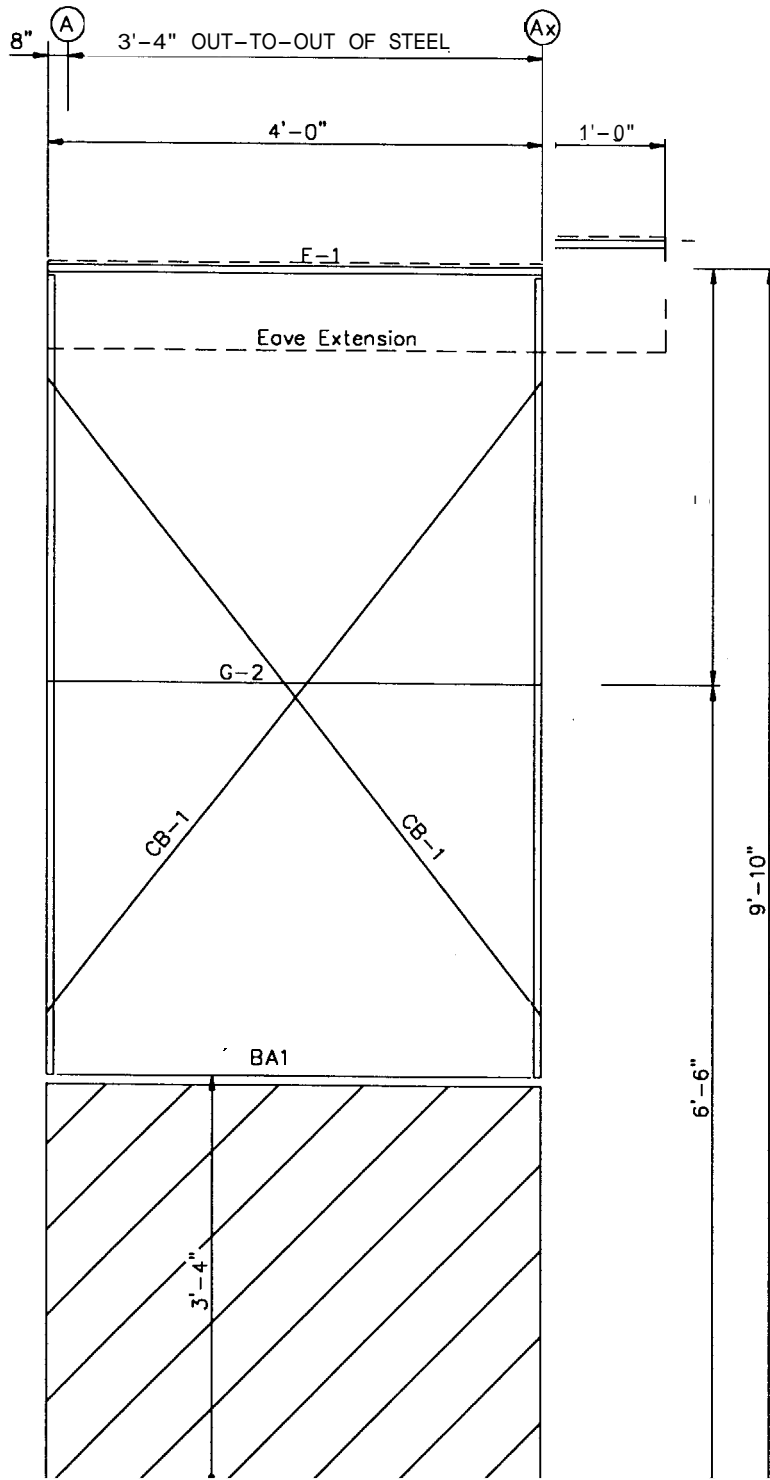




ENDWALL SHEETING & TRIM: FRAME LINE 1
PANELS: 26 Ga. PBR - NEED COLOR

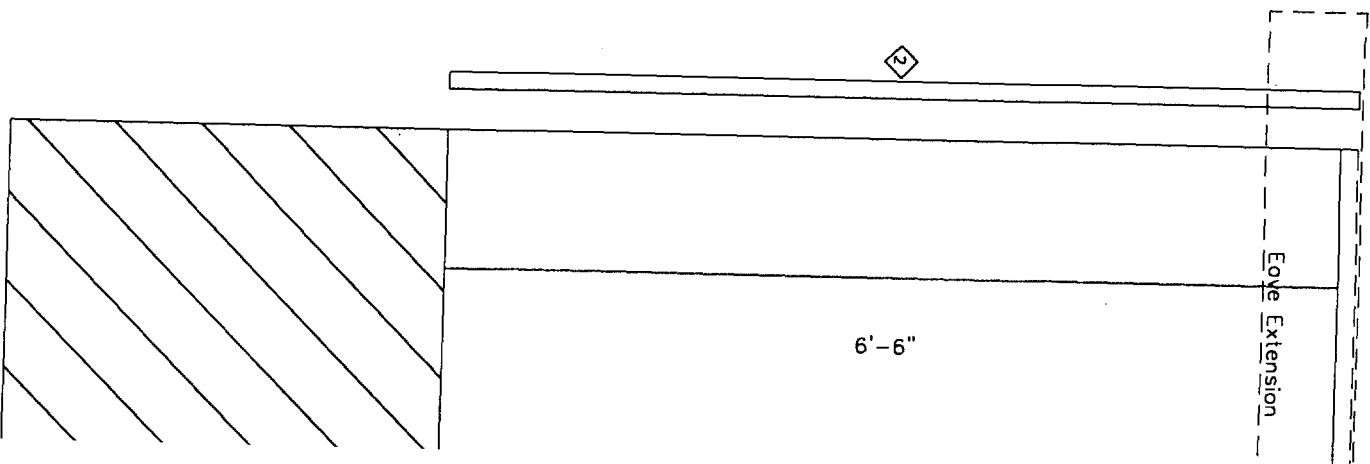
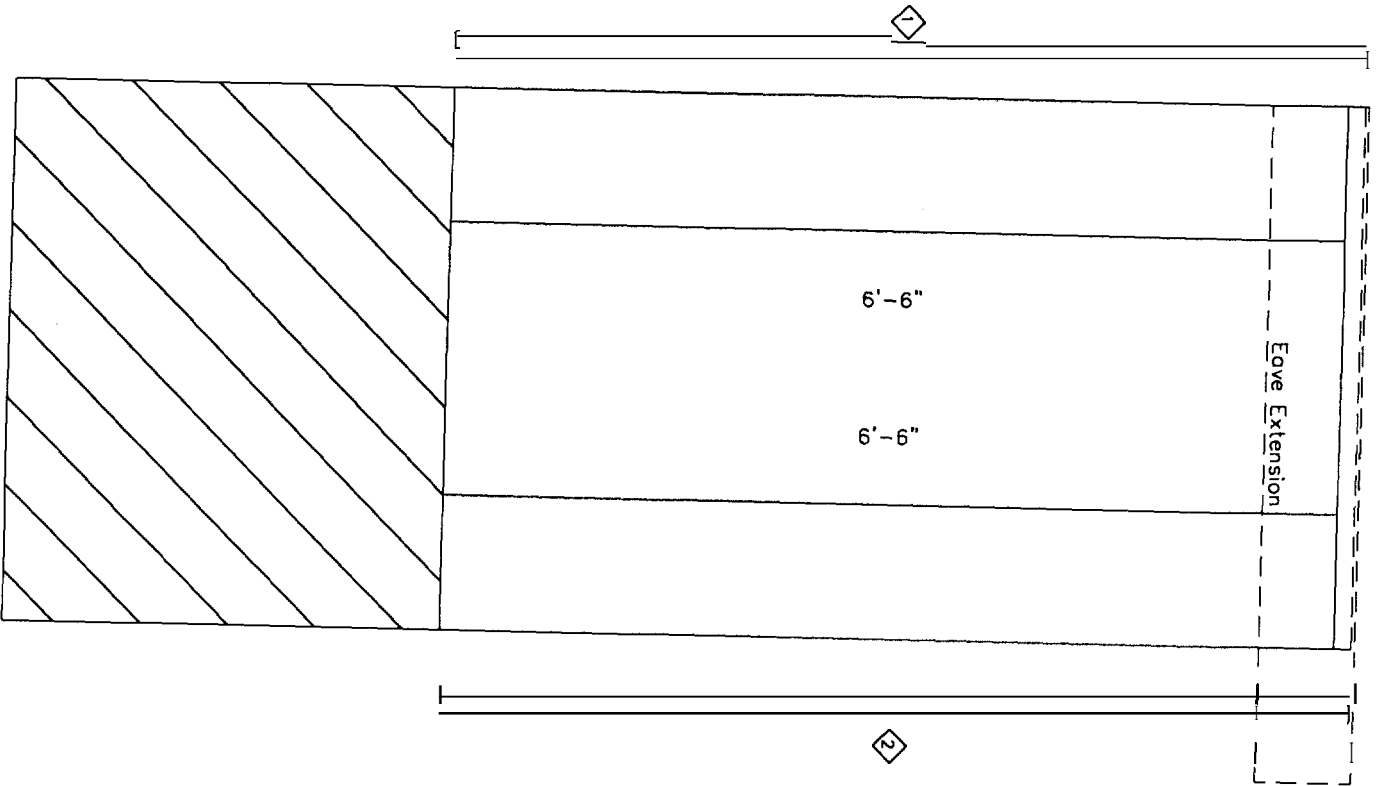




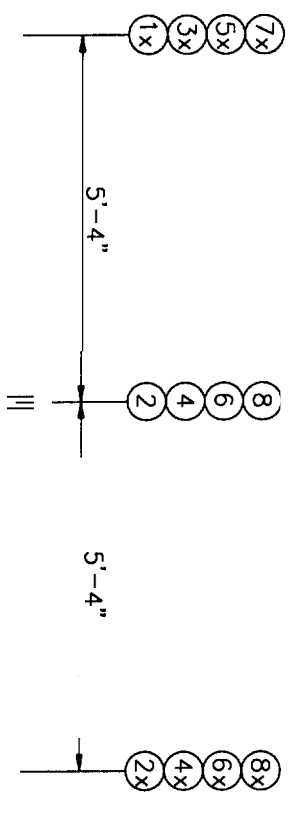
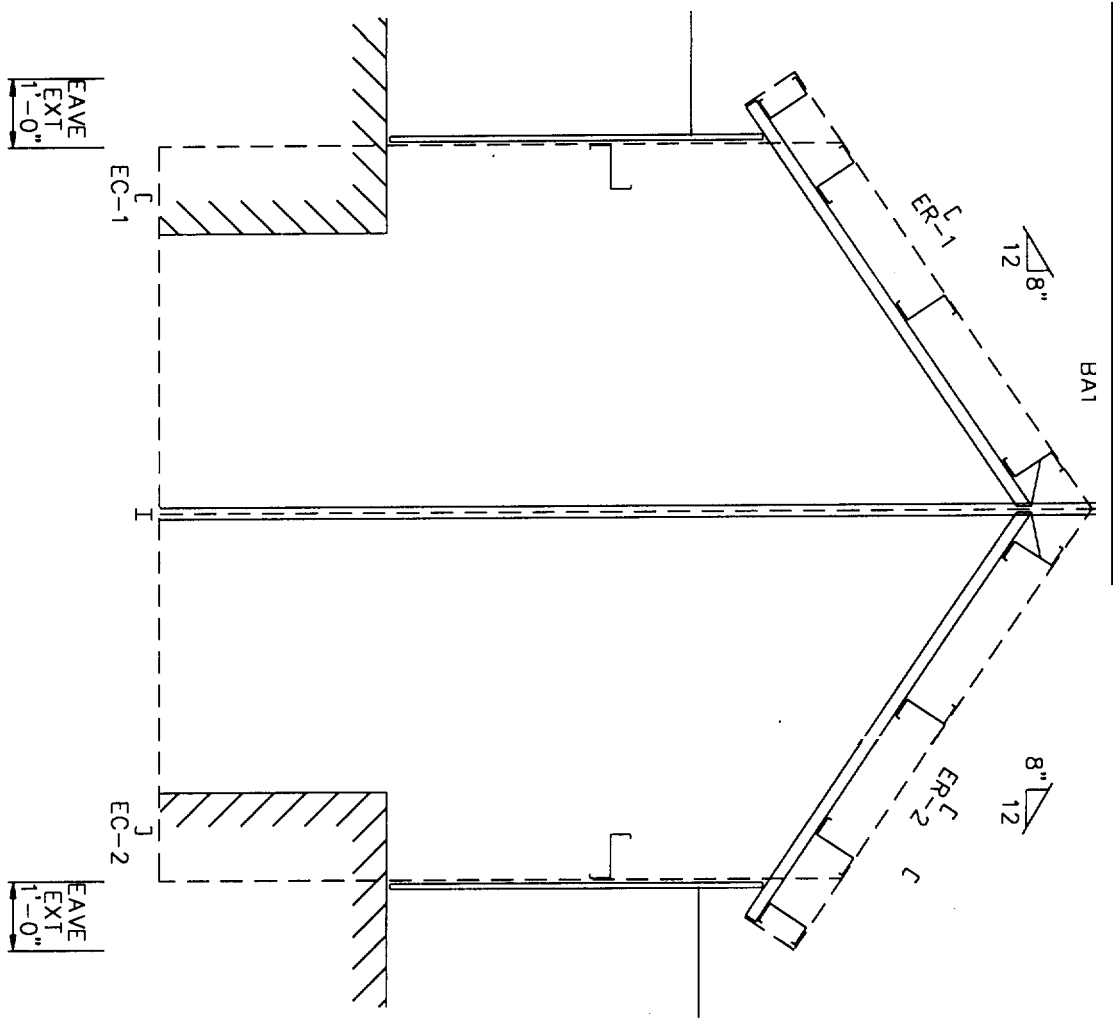


CONCRETE MASONRY WALL
(NOT BY BRAEMAR BLDG.)(TYP)

0
1
2
3
4
5
6
7
8
9
10
11
12
13
14
15
16
17
18
19
20
21
22
23
24
25
26
27
28
29
30
31
32
33
34
35
36
37
38
39
40
41
42
43
44
45
46
47
48
49
50
51
52
53
54
55
56
57
58
59
60
61
62
63
64
65
66
67
68
69
70
71
72
73
74
75
76
77
78
79
80
81
82
83
84
85
86
87
88
89
90
91
92
93
94
95
96
97
98
99

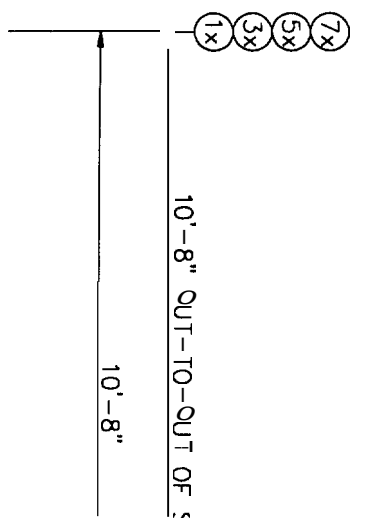
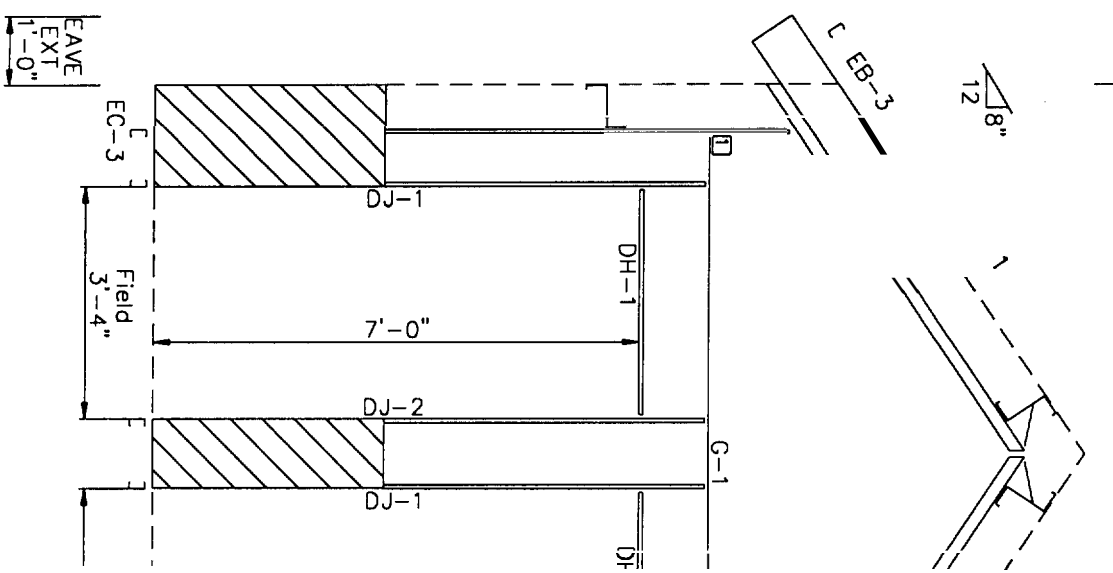


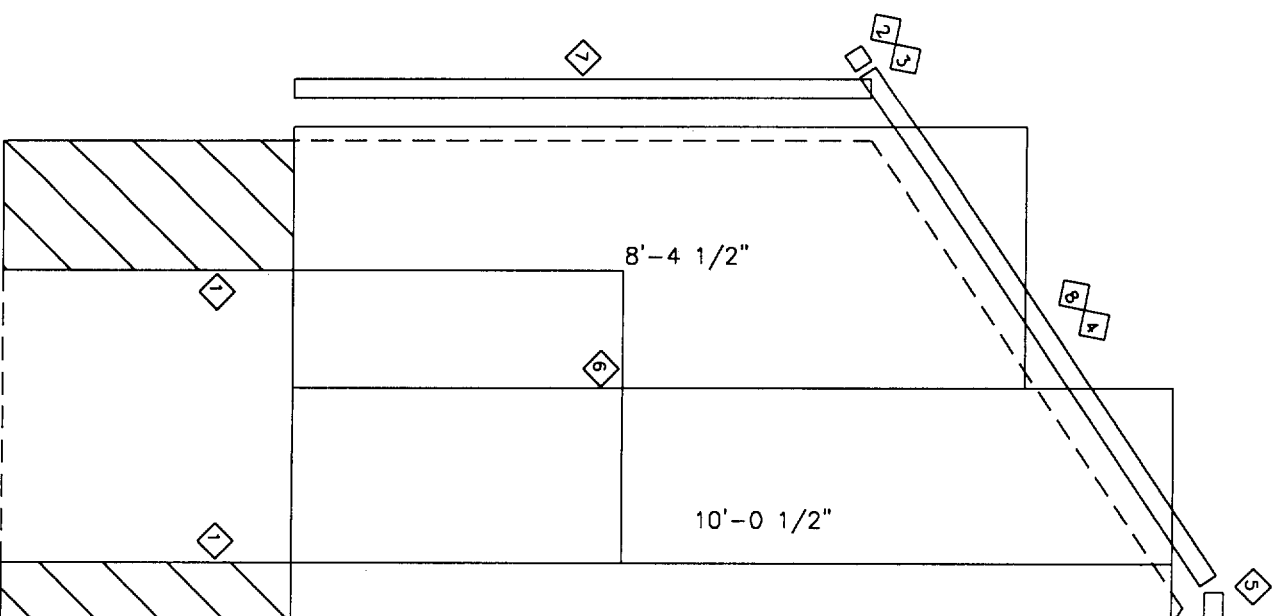
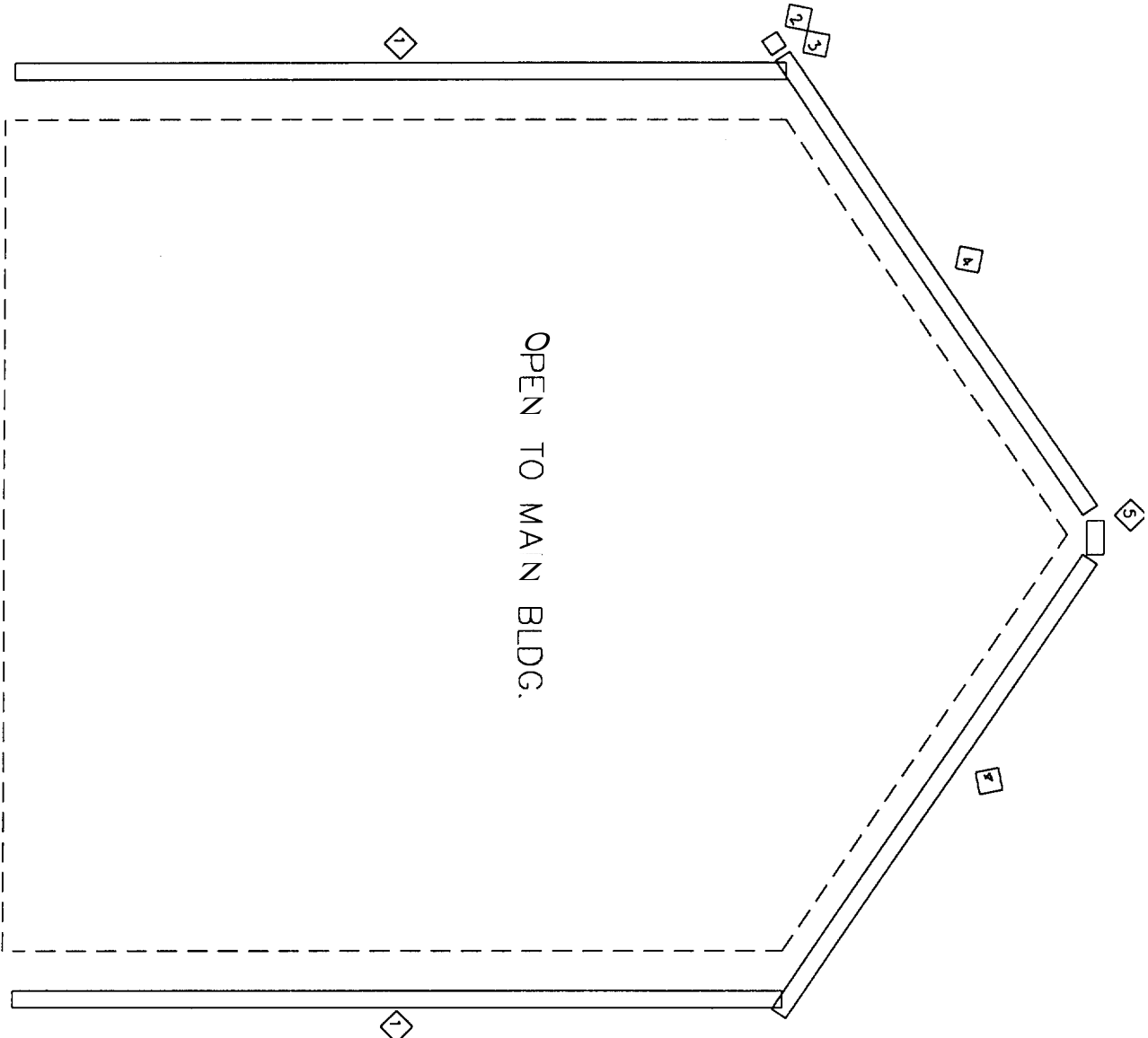
9'-10"



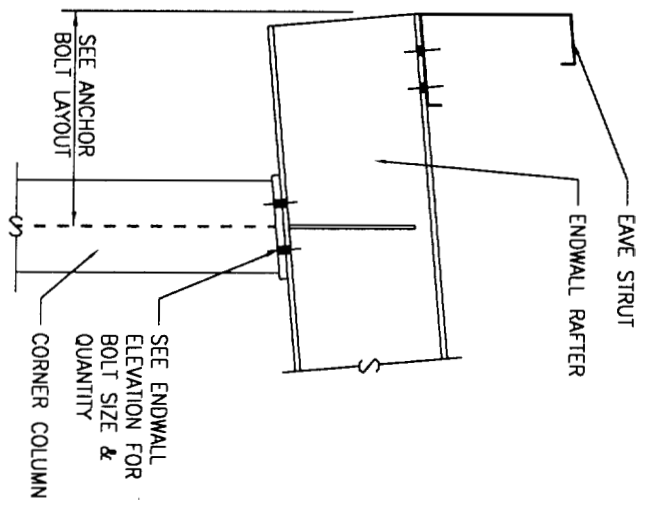
9'-10"

8'-0" 1'-10"

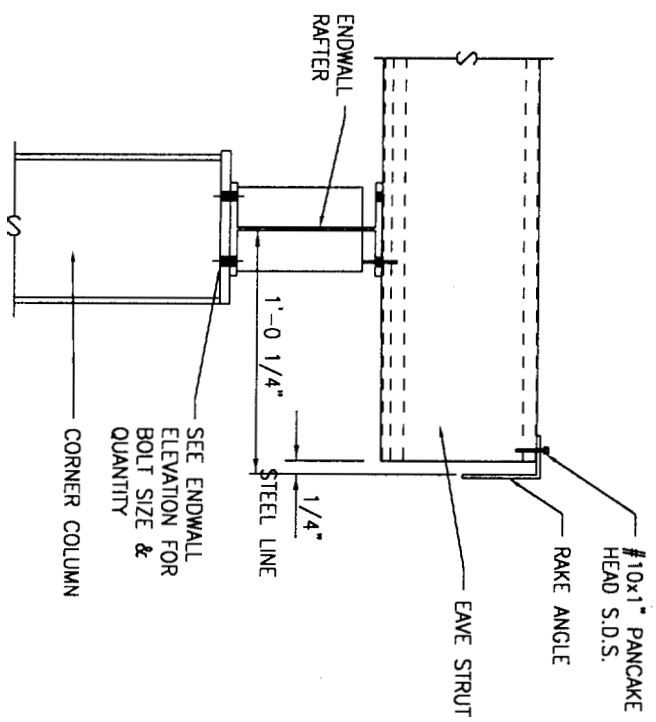




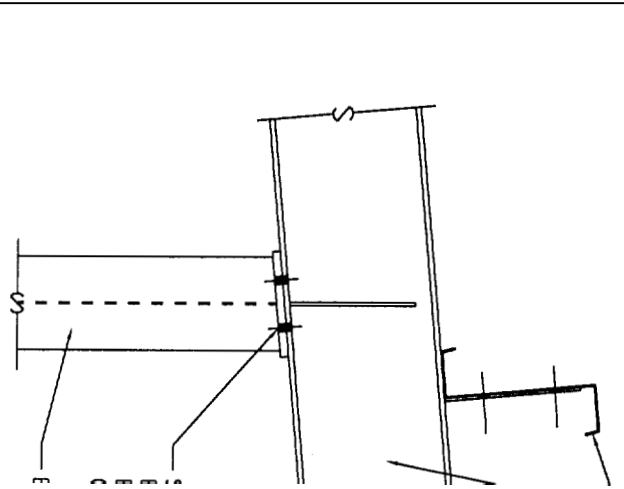
2"
Panel Start



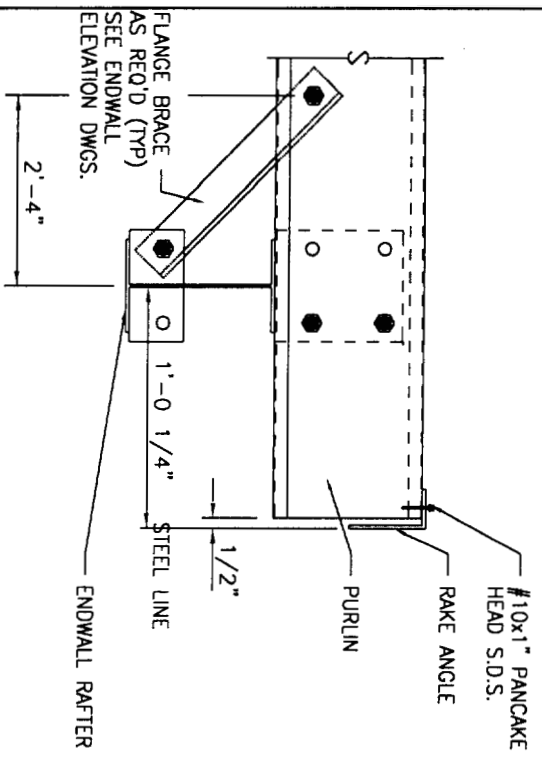
CORNER COLUMN TO ENDWALL RAFTER 1 1



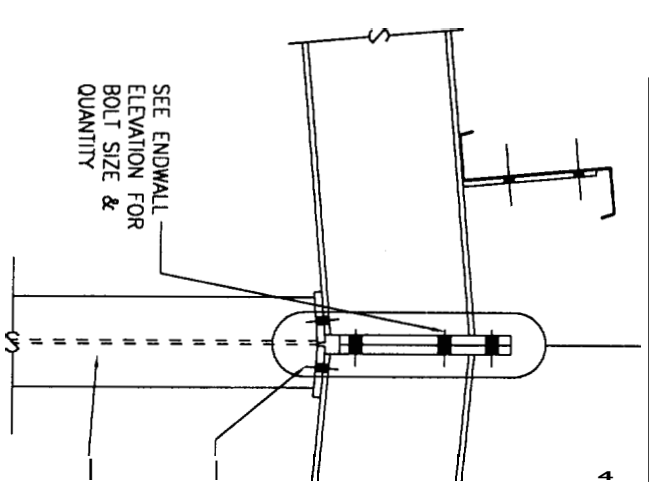
EAVE STRUT TO ENDWALL RAFTER 1 2



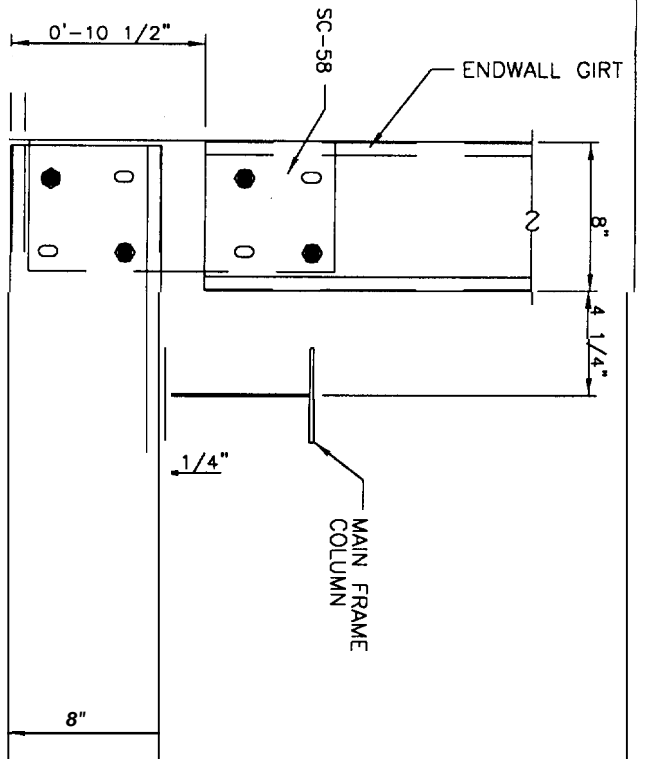
PURLIN TO ENDWALL 4



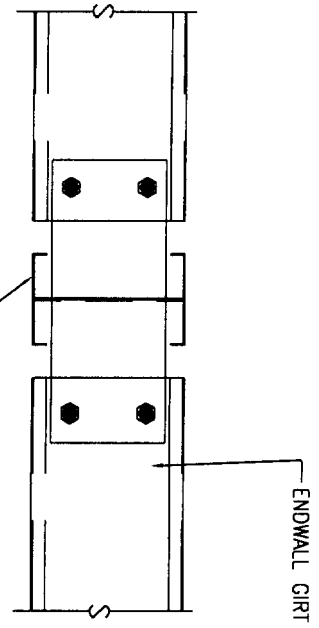
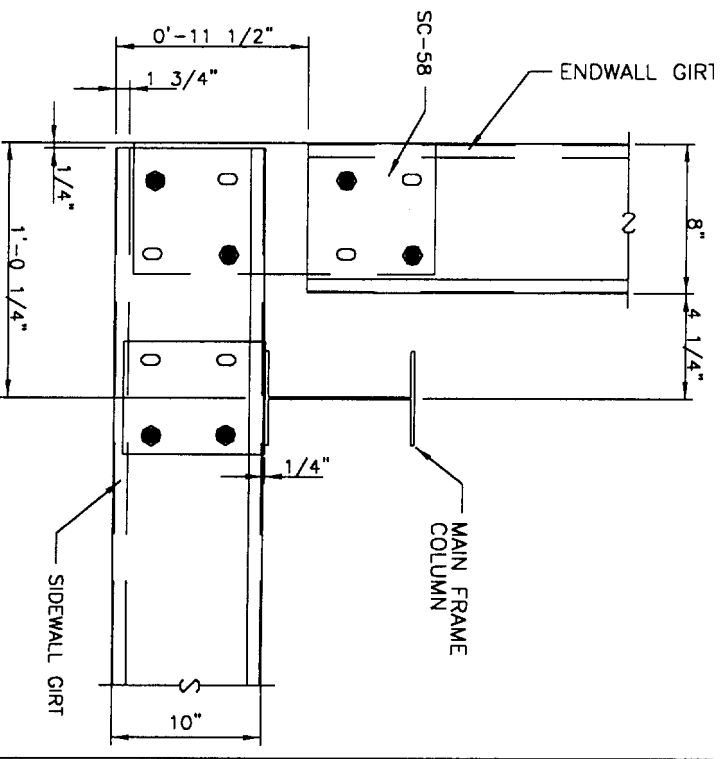
FLANGE BRACE TO ENDWALL RAFTER 1 3



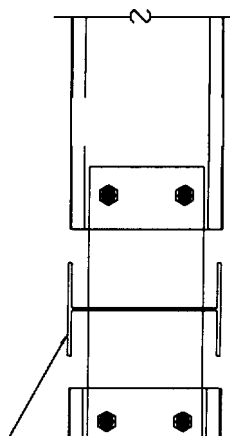
• BOLTS IN THIS CONNECTION REQUIRE



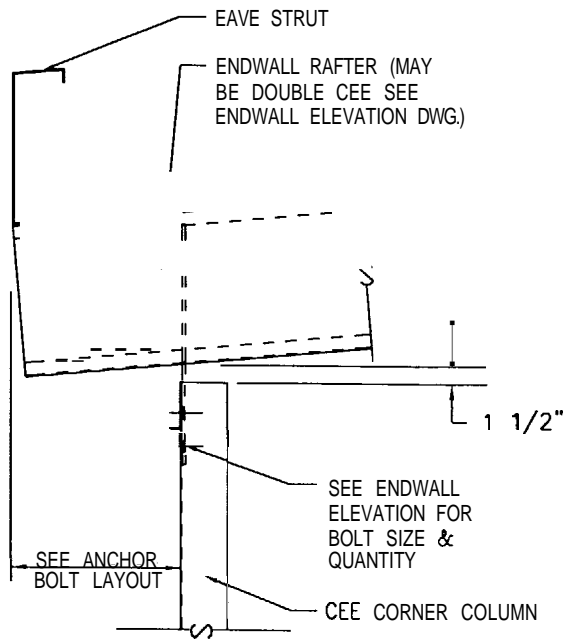
Corner Detail At Main Frame Endwall | 1 | 1



GIRT AT ENDWALL COLUMN | 1 | 2

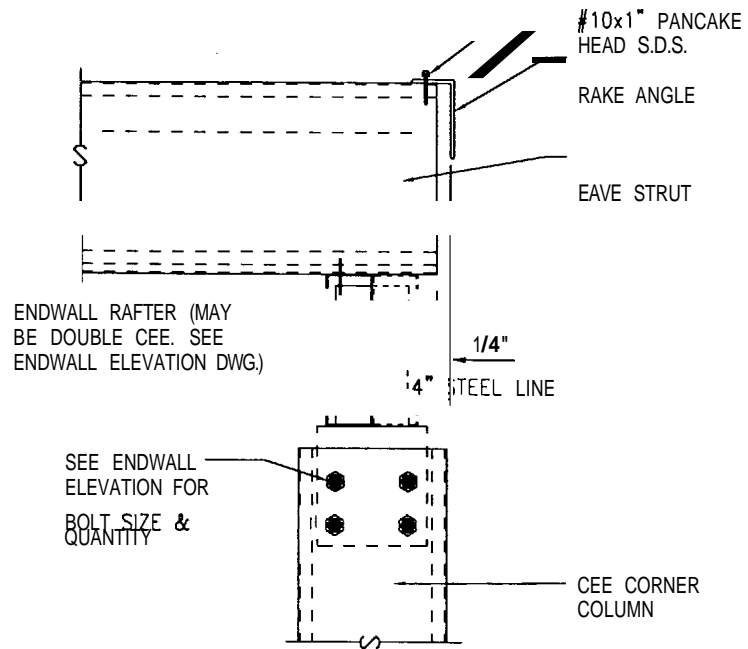


GIRT AT ENDWALL COLUMN



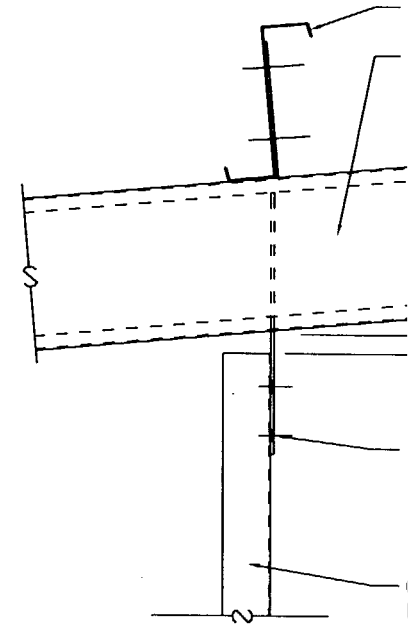
CORNER COLUMN TO ENDWALL RAFTER

1

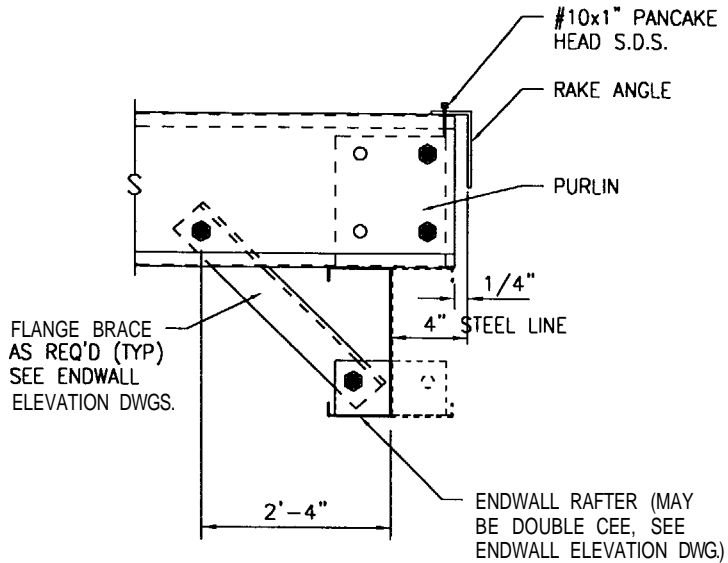


EAVE STRUT TU ENDWALL RAFTER

2

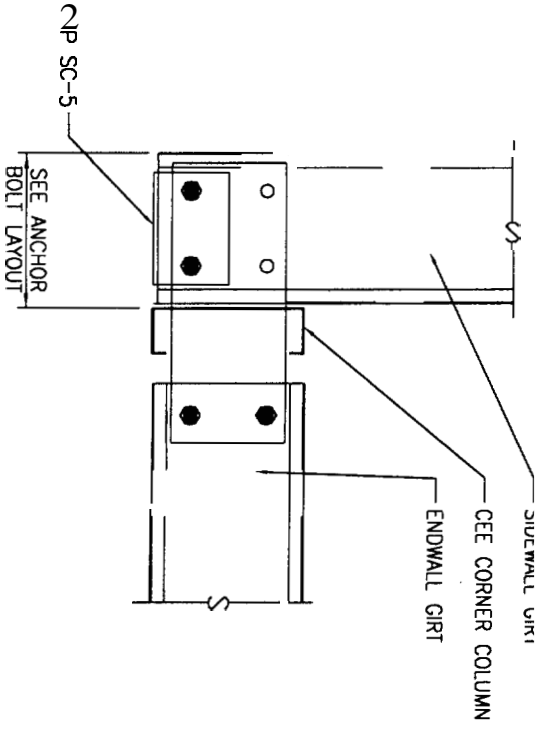


ENDWALL COLUMN TO ENDWALL



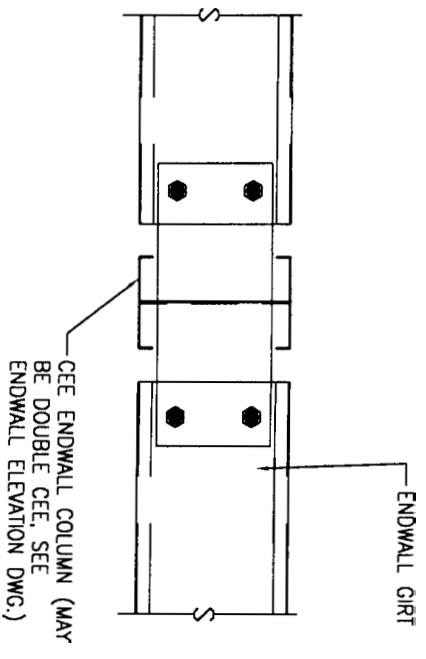
PURLIN TO ENDWALL RAFTER

5



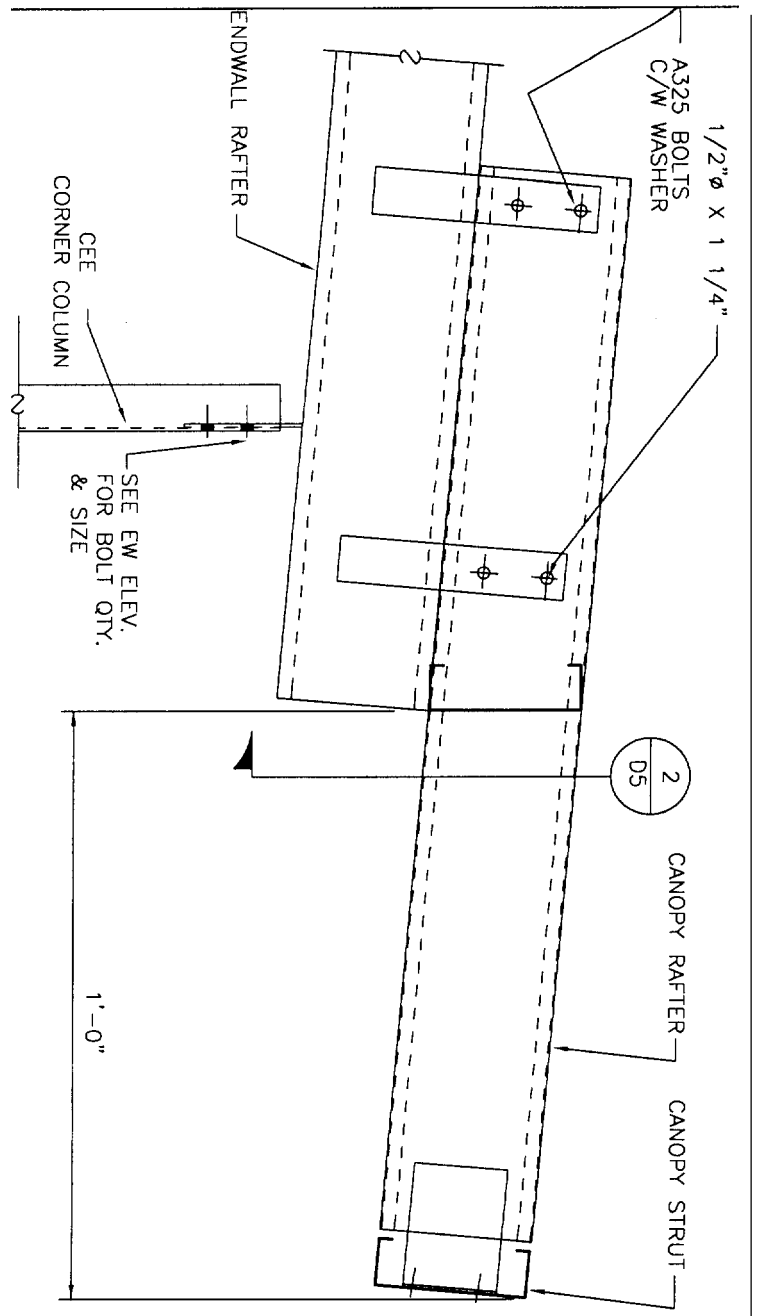
GIRI A1 CUKNER CULUMN

1 1



GIRI AT ENDWALL CULUMN

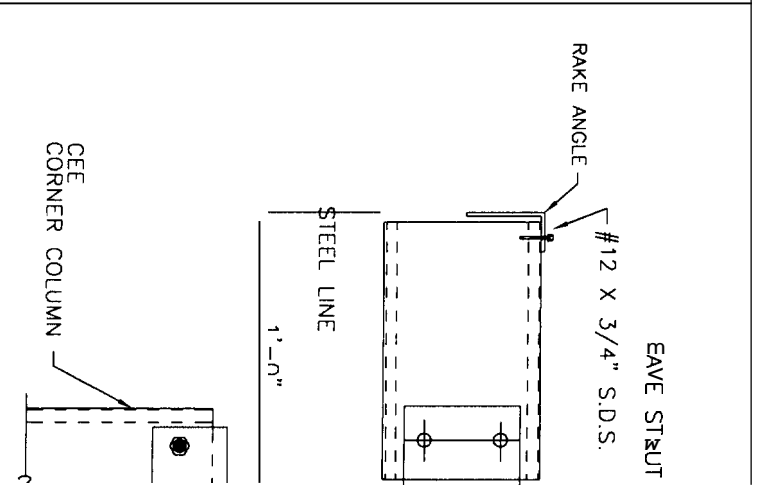
1 2



CANOPY RAFTER TO F W RAFTER

1

CORNER COLUMN TO ENDWALL



1

1

1

1

1

1

1

1

1

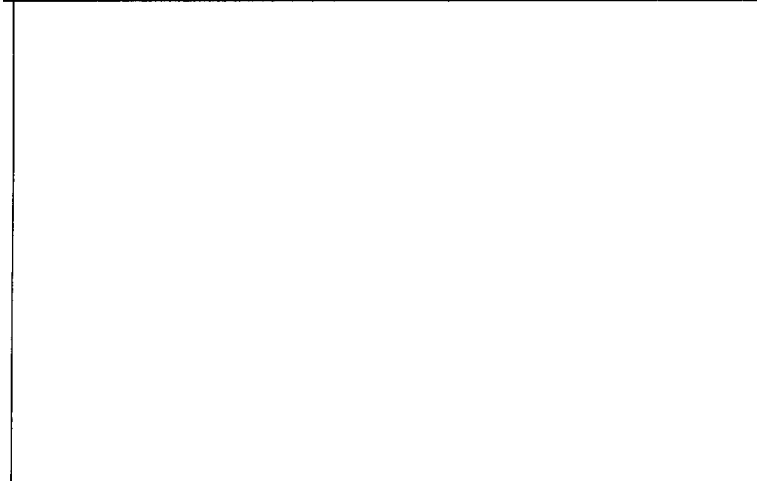
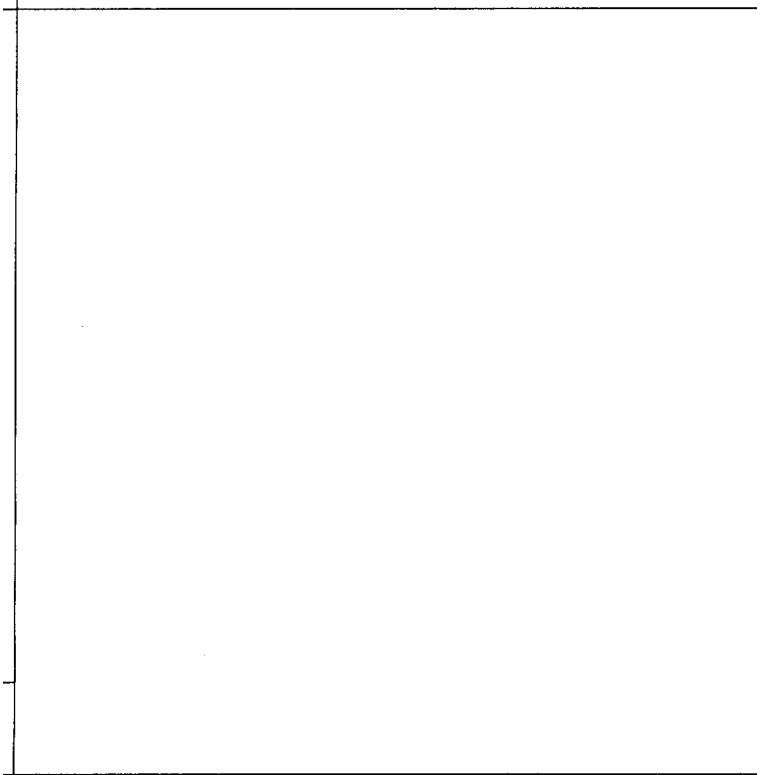
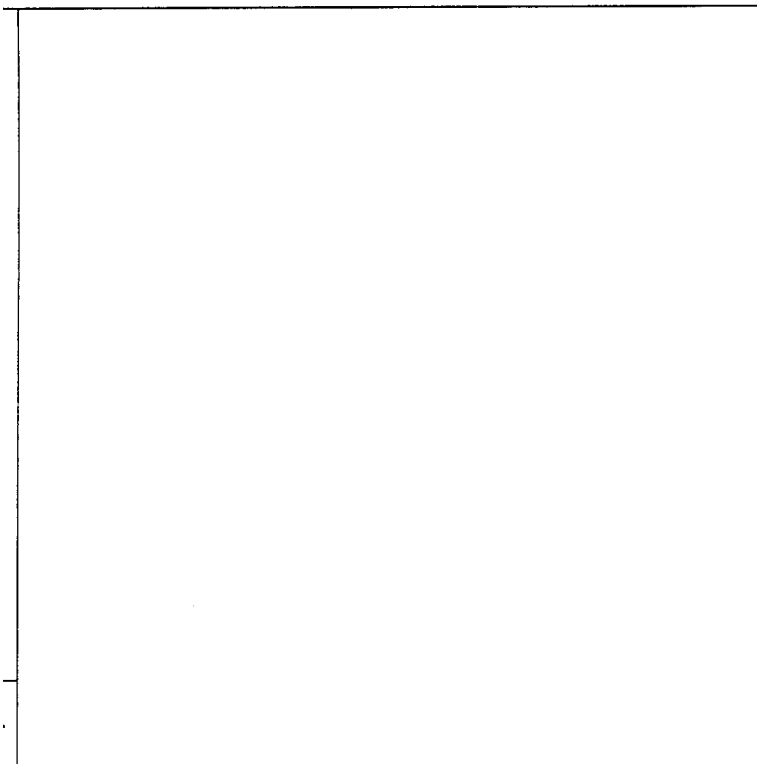
1

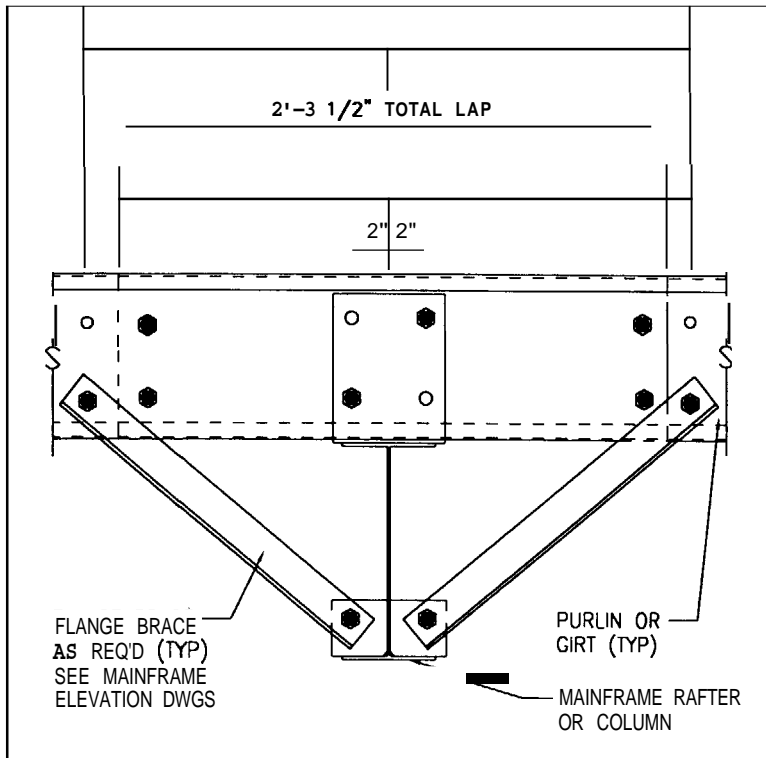
1

1

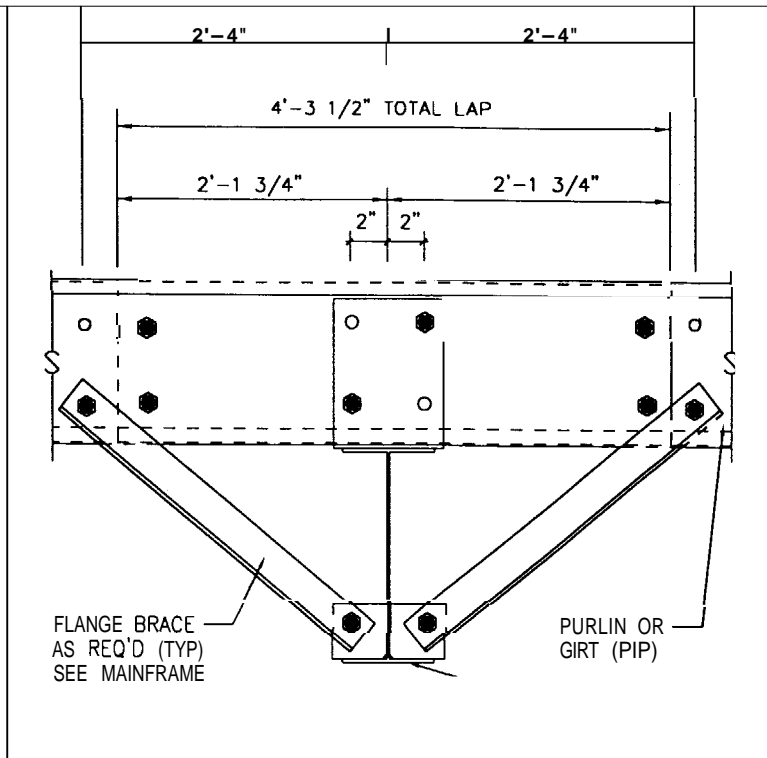
1

1

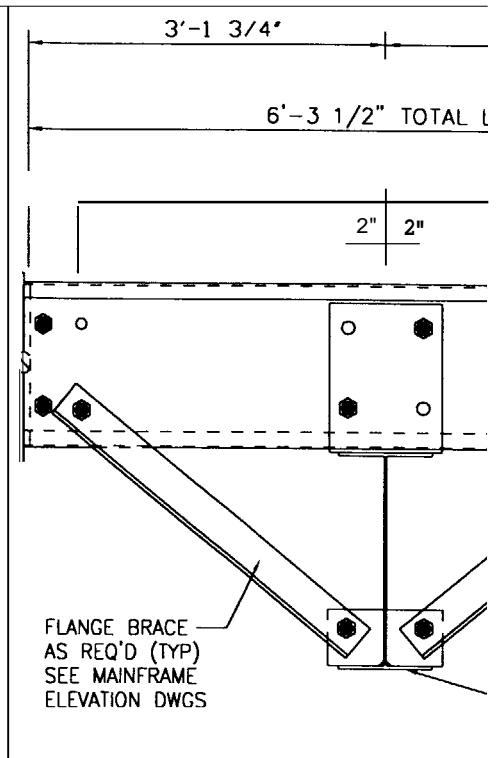




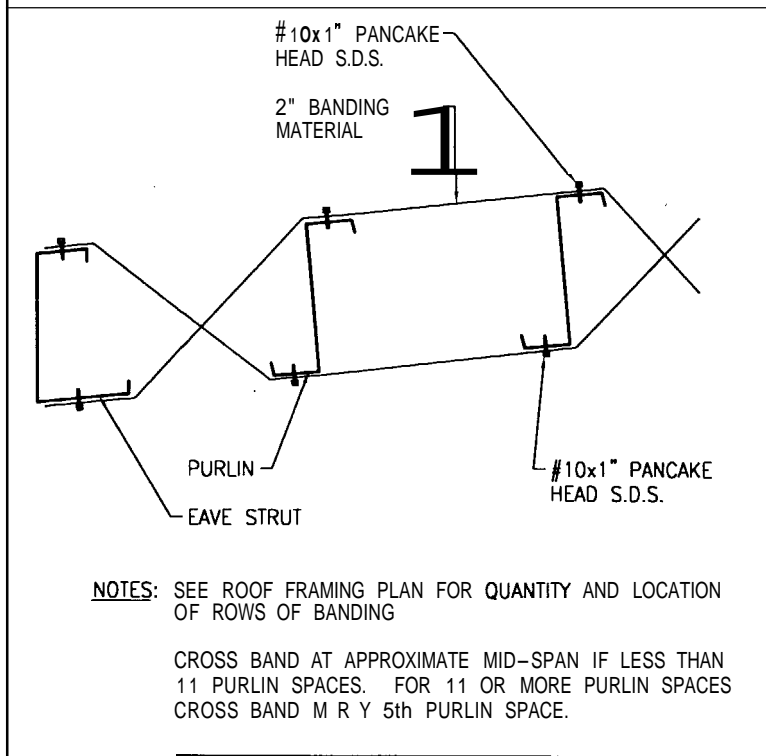
PURLIN or GIRT LAP (2'-3 1/2") 1 1



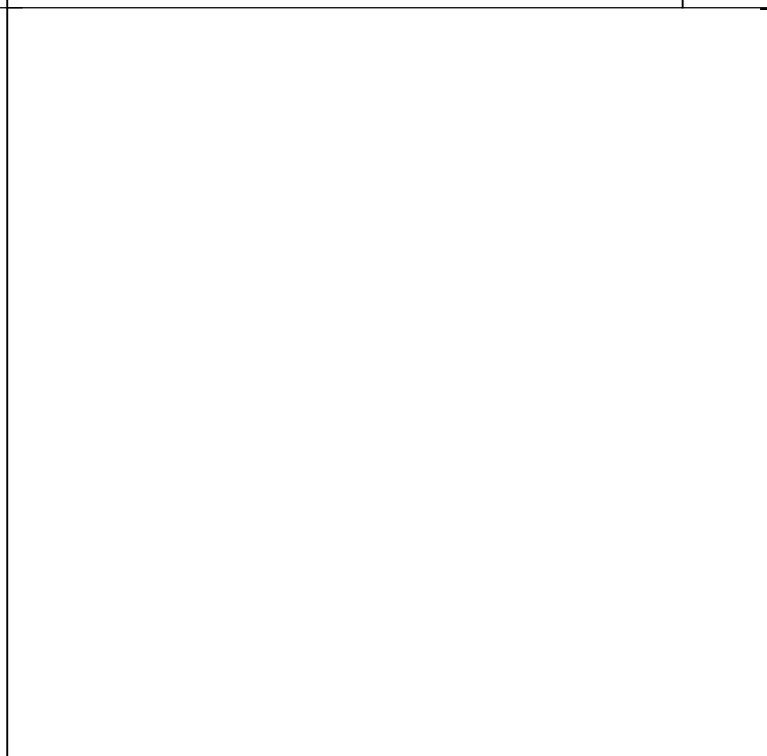
PURLIN or GIRT LAP (4'-3 1/2") 2 2



PURLIN or GIRT LAP (€'-:)



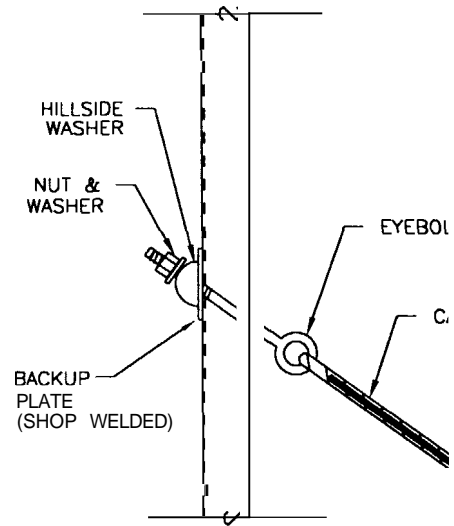
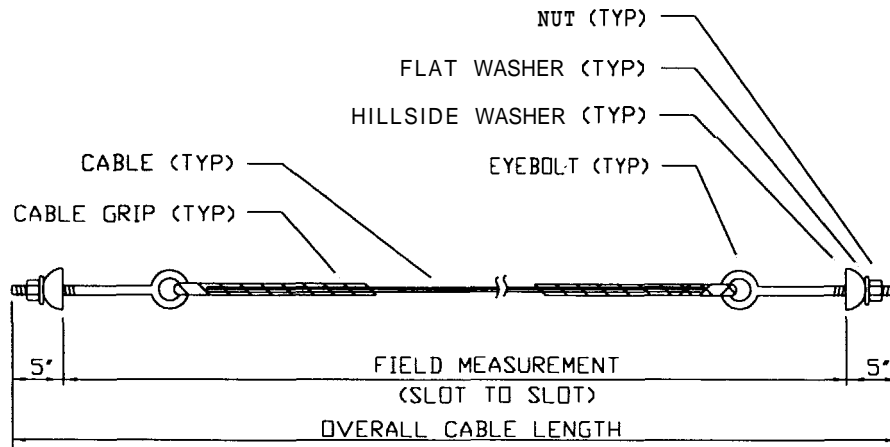
PURLIN BANDING DETAIL 1 1



NOTE: SEE ROOF FRAMING PLAN FOR QUANTITY AND LOCATION OF EAVE STRUT BRACES.

LOW SIDE DETAIL SHOWN HIGH SIDE DETAIL SHOWN

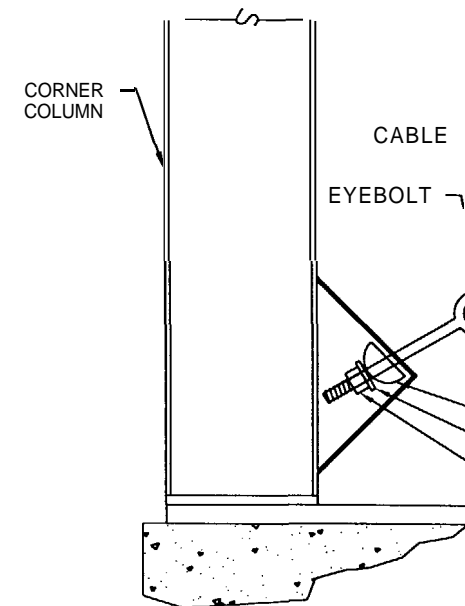
EAVE STRUT AND BRACE DETAIL 1 1

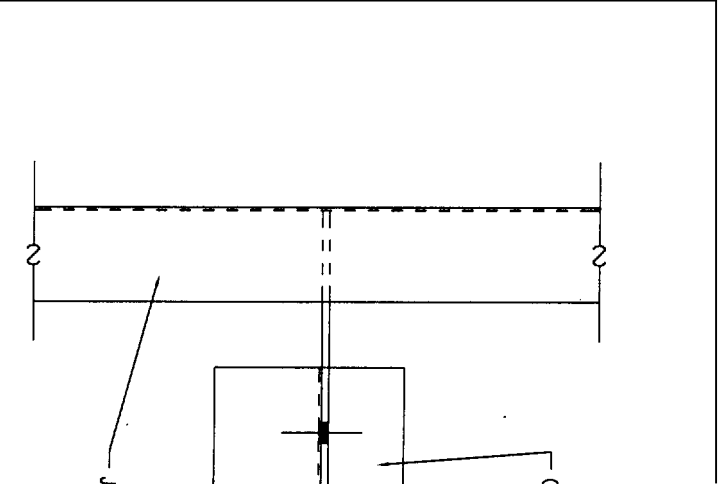
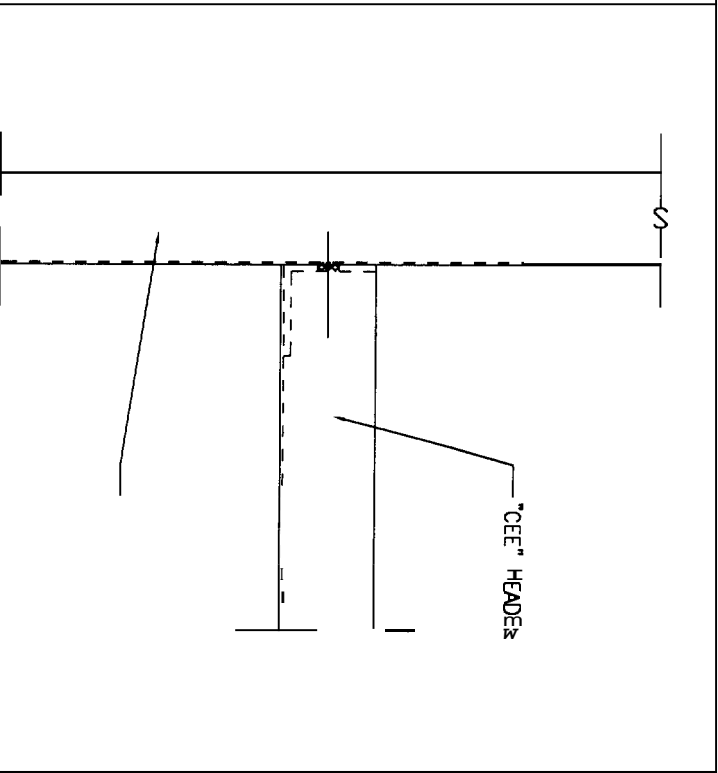
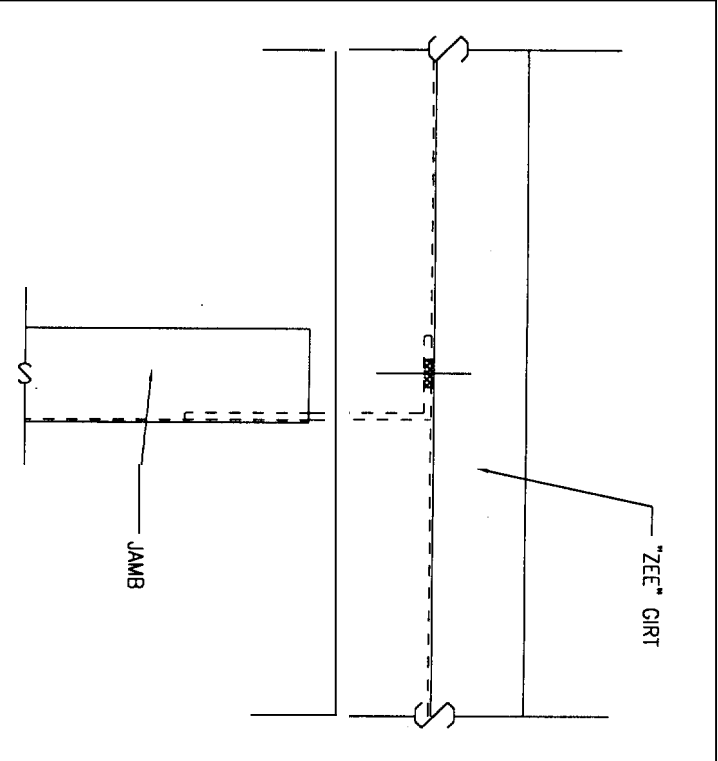


CABLE BRACE ASSEMBLY

1

CABLE BRACING AT COLUMN □

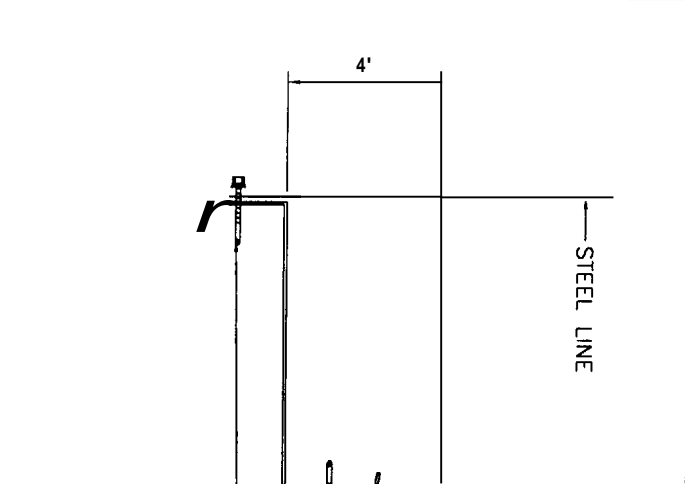
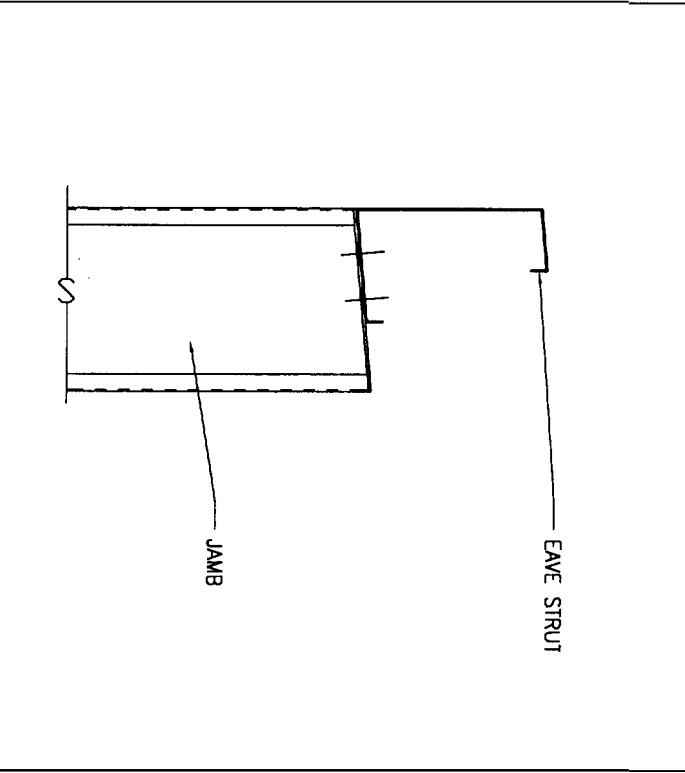
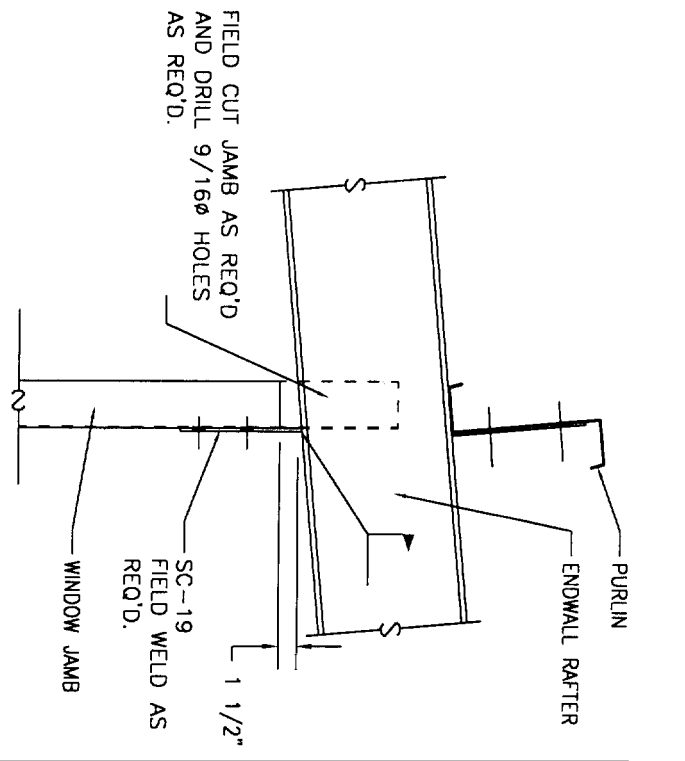


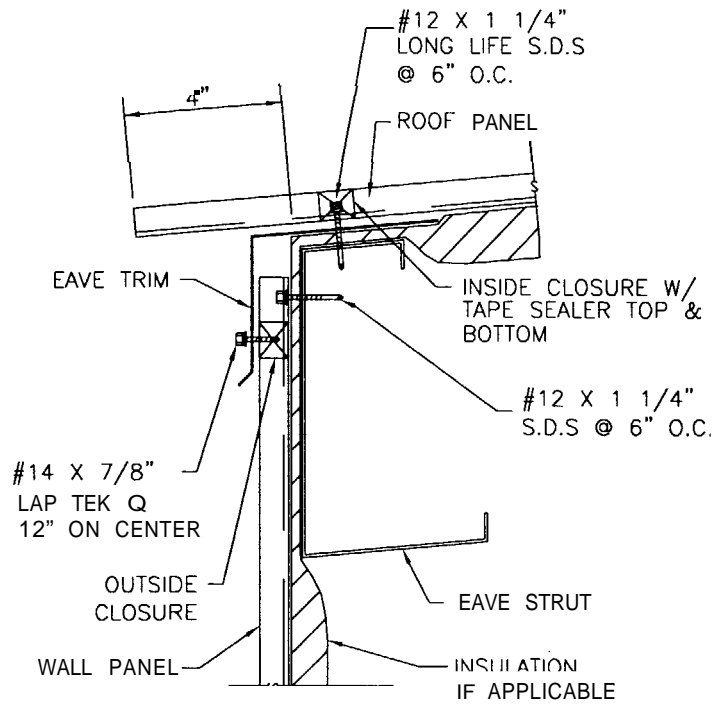


JAMB TO GIRT

CHANNEL HEADER TO GIRT

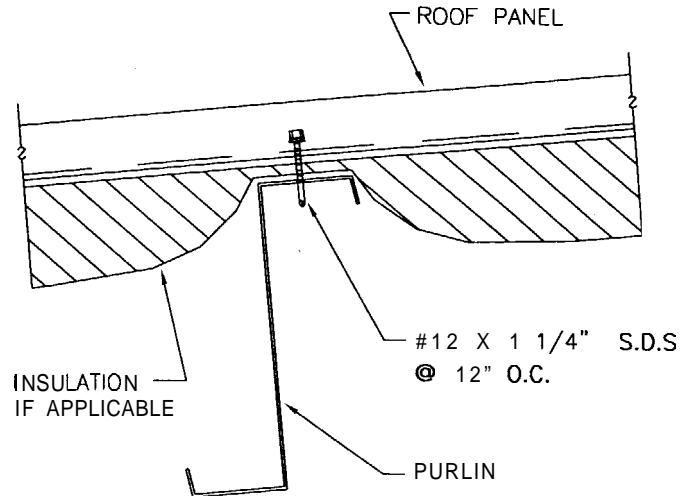
GIRT TO JAMB





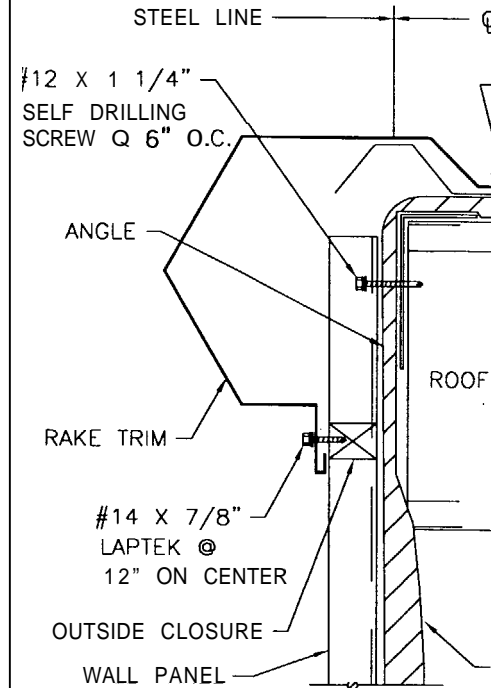
EAVE TRIM DETAIL

1

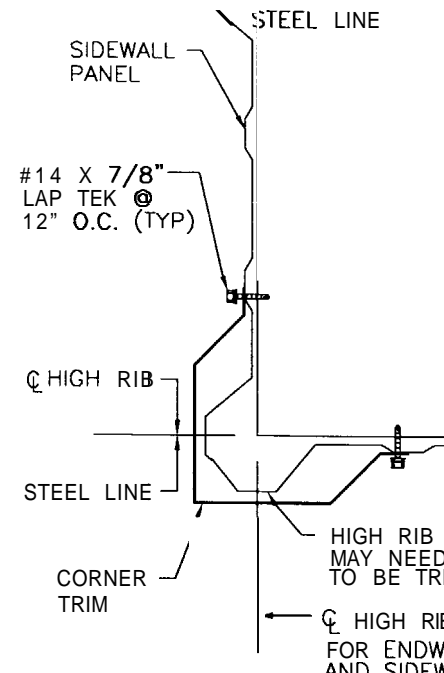
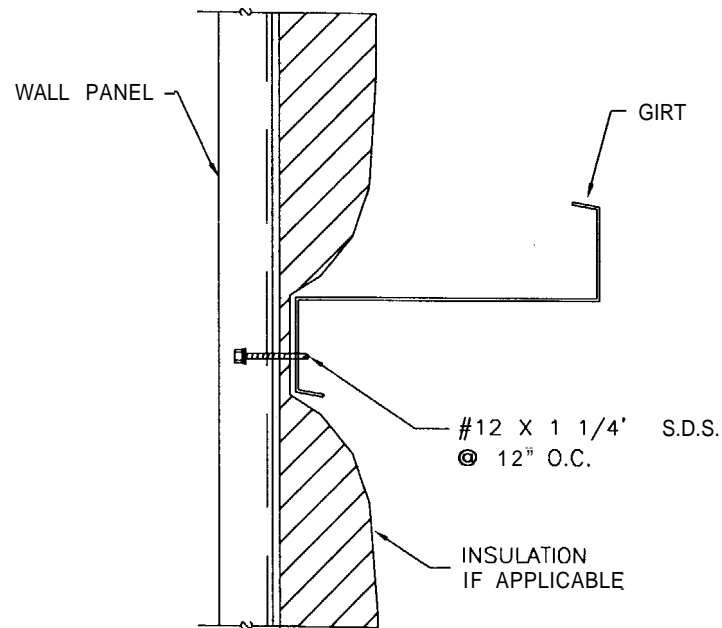
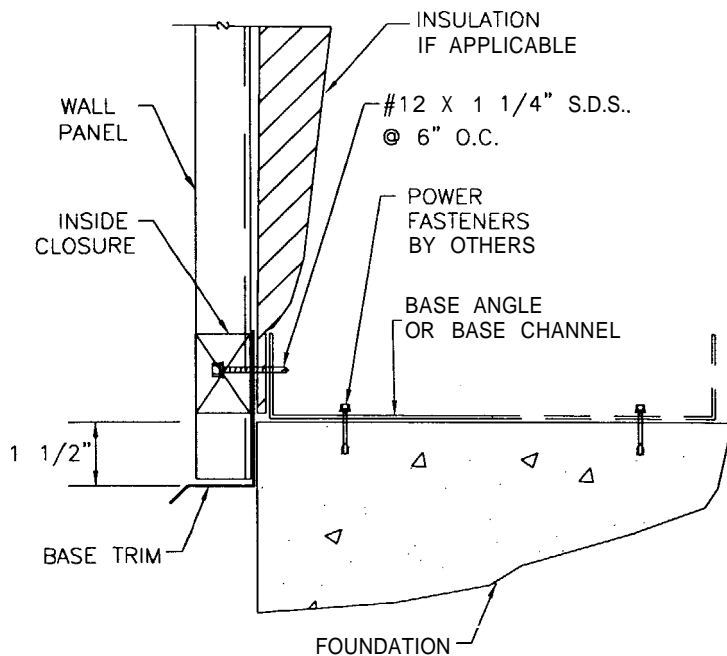


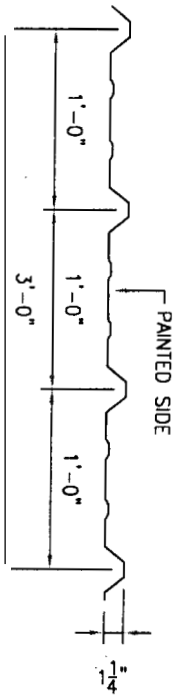
ROOF PANEL @ PURLIN DETAIL

2

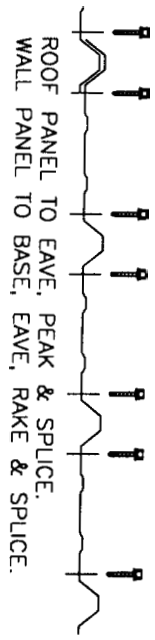


GABLE TRIM DETAIL





Panel Profile



ROOF PANEL TO EAVE, PEAK & SPLICE.

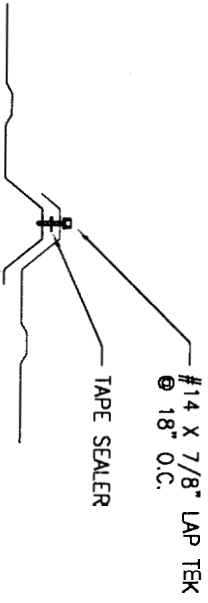
WALL PANEL TO BASE, EAVE, RAKE & SPLICE.

PANEL TO ALL INTERMEDIATE PURLINS & GIRTS.

FASTENER SPACING

PHR PANEL

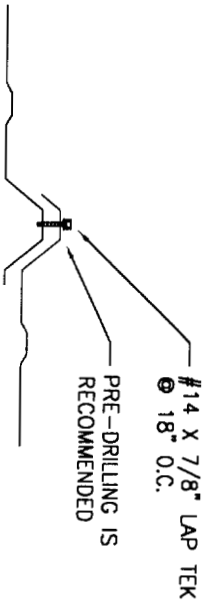
1 1



#14 X 7/8" LAP TEK
@ 18" O.C.

TAPE SEALER

INSTALL SIDE LAP FASTENERS ONLY AFTER STRUCTURAL FASTENERS ARE IN PLACE.



#14 X 7/8" LAP TEK
@ 18" O.C.

PRE-DRILLING IS RECOMMENDED

NOTE:
AFTER PRE-DRILLING, METAL SHAVINGS MUST BE CLEANED FROM PANEL SURFACE TO PREVENT CORROSION.

1 2

