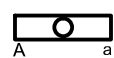


LEGEND

ALL DEVICES, FIXTURES, ETC. SHALL BE NEW UNLESS DESIGNATED WITH THE FOLLOWING TAGS:

- E EXISTING TO REMAIN
- ER EXISTING RELOCATED
- NR NEW TO REPLACE EXISTING IN EXISTING LOCATION
- R EXISTING TO BE REMOVED
- RR REMOVE & RELOCATE EXISTING



LIGHT FIXTURE - UPPERCASE LETTER IS TYPE, LOWERCASE LETTER IS SWITCH CONTROL GROUP
RECTANGLES INDICATE NUMBER FIXTURES IN A ROW.



CEILING MOUNTED FIXTURE - NOTES SAME AS ABOVE



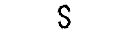
WALL MOUNTED EXIT SIGN - ARROW INDICATES DIRECTIONAL ARROW ON SIGN EMERGENCY LIGHTING



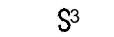
BATTERY PACK WITH EMERGENCY LAMPS AS SHOWN



REMOTE EMERGENCY LAMP LIGHT FIXTURES



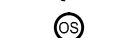
SPST FLUSH WALL TOGGLE SWITCH - MOUNT AT 48" A.F.F TO CENTER



THREE-WAY TOGGLE SWITCH - NOTES SAME AS SPST SWITCH ABOVE



PILOT LIGHT SWITCH - NOTES SAME AS ABOVE



OCCUPANCY SENSOR



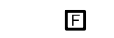
COMBINATION VOICE/DATA JACK - "V" INDICATES NUMBER OF VOICE LINES, "D" INDICATES NUMBER OF DATA LINES, PROVIDE (1) EACH UNLESS NOTED OTHERWISE - "U" INDICATES 48" TO CENTER A.F.F.



FIRE ALARM SYSTEM CEILING MOUNTED HEAT DETECTOR



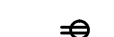
WALL MOUNTED FIRE ALARM SYSTEM MANUAL PULL STATION



FIRE ALARM SYSTEM WALL MOUNTED AUDIO/VISUAL DEVICE WITH VISUAL DEVICE CANDELA RATING AS NOTED



20 AMP DUPLEX CONVENIENCE RECEPTACLE - MOUNT AT 18" A.F.F. TO CENTER UNLESS INDICATED OTHERWISE - "GFI" INDICATES GROUND FAULT DEVICE, "GFI" INDICATES GFI PROTECTED BY UPSTREAM DEVICE



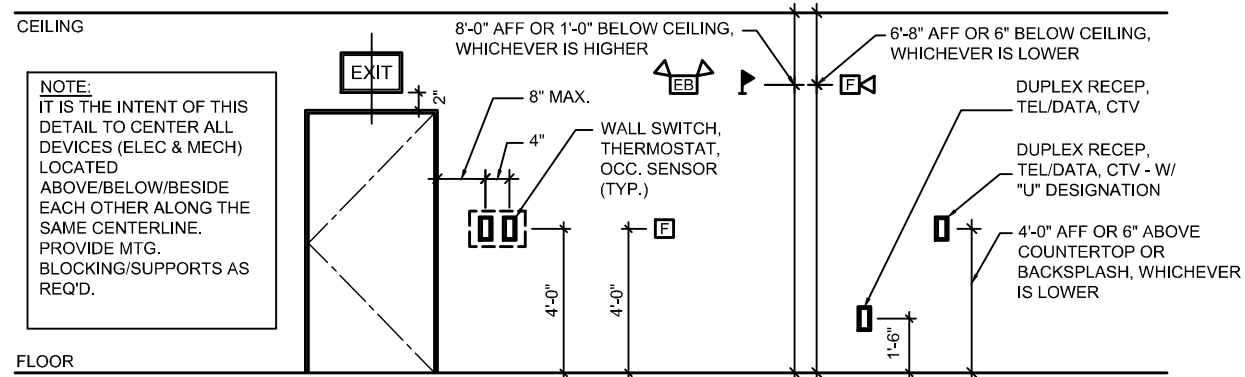
SPECIAL PURPOSE OUTLET OR EQUIPMENT CONNECTION - COORDINATE LOCATION AND TYPE OF CONNECTION WITH EQUIPMENT BEING SERVED.



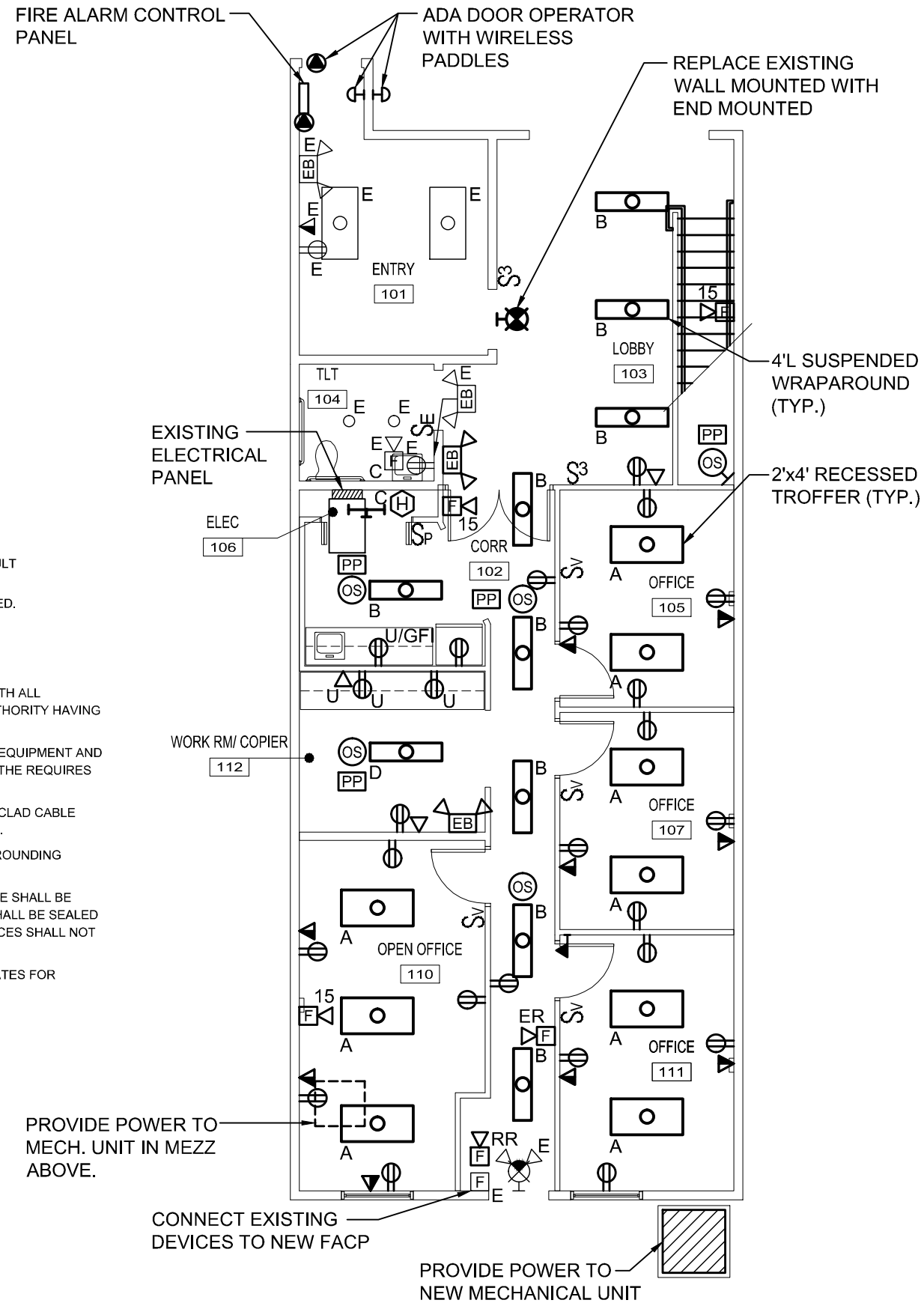
POWER PACK

SPECIFICATION FOR ELECTRICAL SYSTEMS:

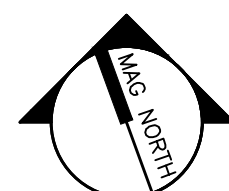
- CODES & REQUIREMENTS:** ALL WORK SHALL BE INSTALLED IN A NEAT AND WORKMAN LIKE MANNER, RECTILINEAR TO BUILDING STRUCTURE, AND IN ACCORDANCE WITH ALL APPLICABLE CODES, INCLUDING, BUT NOT LIMITED TO NFPA 70, 90A, AND 101 AND ASHRAE 90.1-2007, ALL LOCAL, STATE AND NATIONAL CODES, AND DIRECTION FOR AUTHORITY HAVING JURISDICTION.
- GENERAL:** CONTRACTOR SHALL REVIEW ALL TRADES CONTRACT DOCUMENTS, AND FIELD VERIFY, TO DETERMINE SPECIFIC MOUNTING LOCATIONS FOR ELECTRICAL EQUIPMENT AND CONDUIT. COORDINATE MOUNTING OF ALL DEVICES WITH ARCHITECT AND CASEWORK INSTALLER PRIOR TO ROUGH-IN. EXACT LOCATION OF MECHANICAL EQUIPMENT THE REQUIRES ELECTRICAL CONNECTION IS SHOWN ON THE MECHANICAL DRAWINGS.
- CONDUCTORS:** BRANCH CIRCUITS SHALL BE COPPER, WITH TYPE THHN-2-THWN-2 INSULATION INSTALLED WITHIN RACEWAY WHERE EXPOSED, AND TYPE MC METAL-CLAD CABLE WHERE CONCEALED WITHIN WALLS AND ABOVE ACCESSIBLE CEILINGS. RUN SEPARATE NEUTRAL WIRE FOR EACH DEDICATED BRANCH CIRCUIT SHOWN ON THE PLANS.
- GROUNDING & BONDING:** GROUNDING CONDUCTORS SHALL BE STRANDED COPPER, SIZED TO MEET NFPA 70 REQUIREMENTS. SEPARATE INSULATED EQUIPMENT GROUNDING CONDUCTORS WITHIN EACH FEEDER AND BRANCH CIRCUIT RACEWAY SHALL BE PROVIDED, WITH EACH END TERMINATED ON A SUITABLE LUG, BUS OR BUSHING.
- RACEWAY & BOXES:** RACEWAY FOR INTERIOR SPACES, WHERE RACEWAY IS TO BE EXPOSED, SHALL BE EMT. RIGID NON-METALLIC CONDUIT. MINIMUM RACEWAY SIZE SHALL BE 3/4-INCH TRADE SIZE. USE MANUFACTURER'S ELBOWS FOR RIGHT ANGLES. CONCEAL FROM VIEW. ALL PENETRATIONS OF RATED CEILINGS, WALLS AND PARTITIONS SHALL BE SEALED WITH A U.L. LISTED AND APPROVED FIRE SEALANT MATERIAL TO MAINTAIN THE RATING OF SEPARATION. ALL OUTLET AND DEVICE BOXES SHALL BE SHEET METAL. DEVICES SHALL NOT BE INSTALLED BACK-TO-BACK IN ADJACENT ROOMS. ADJUST LOCATIONS AS NECESSARY TO AVOID THIS CONDITION.
- WIRING DEVICES:** ALL RECEPTACLES SHALL STRAIGHT-BLADE DUPLEX TYPE AND RATED FOR 20A. GFCI RECEPTACLES SHALL BE NON-FEED THROUGH TYPE. FACEPLATES FOR INTERIOR DEVICES SHALL BE SMOOTH, HIGH-IMPACT THERMOPLASTIC.



2 ELECTRICAL LEGEND & MOUNTING HEIGHT DETAIL
NTS



1 FIRST FLOOR ELECTRICAL PLAN
1/8" = 1'-0"



PROJECT NORTH



PROJECT:
585 RIVERSIDE - CARPENTERS UNION RENO

SHEET TITLE:
ELECTRICAL PLAN

SCALE: AS NOTED

WBRC CAD FILE: 4003.00-E-101

PROJECT No. 4003.00

JOB CAP/DRAW: KRM

PM: MEJ

CHECKED BY: LJW

DATE: 04-02-2015

SHEET No.

E-101