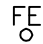






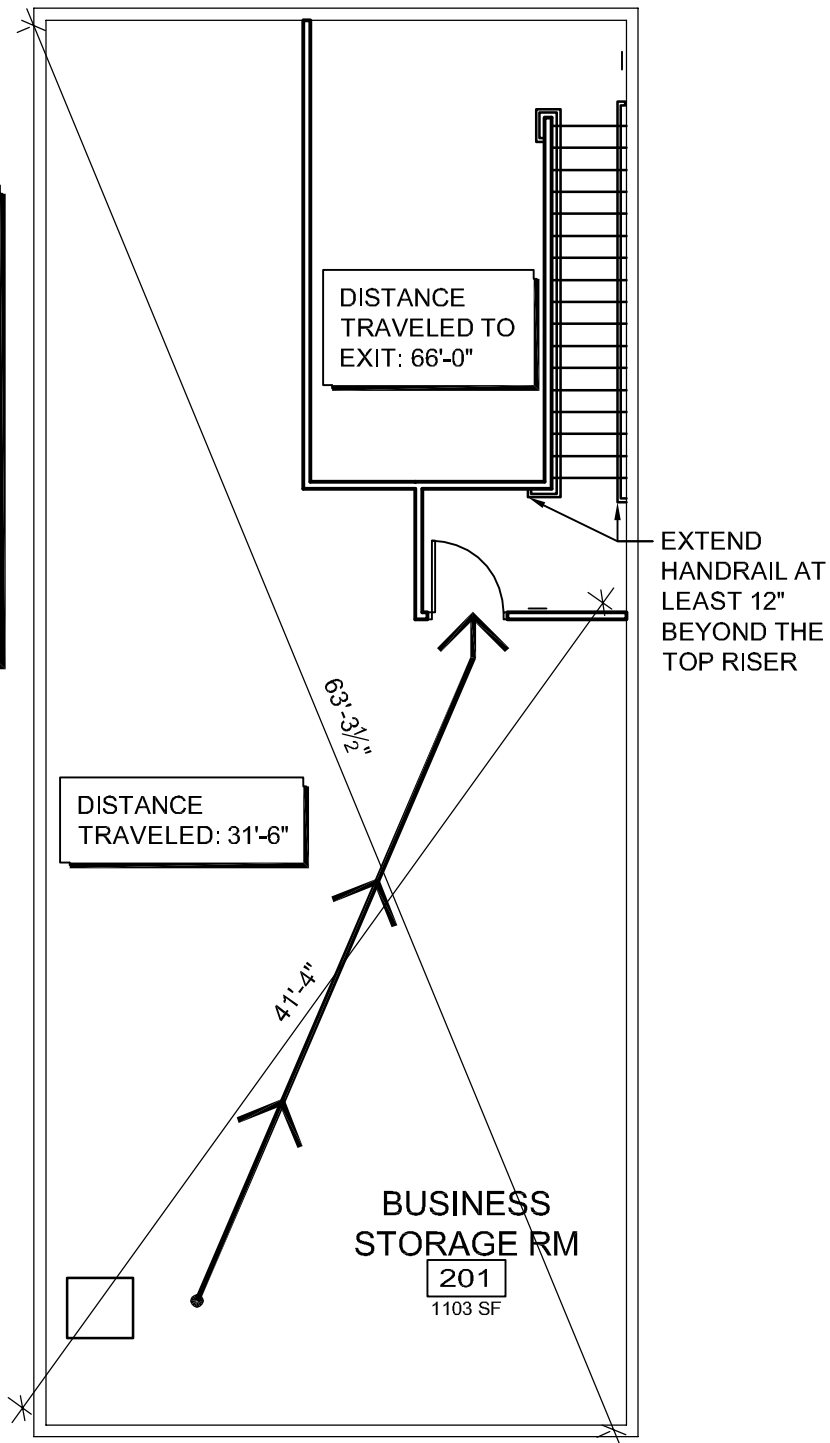


APPLICABLE CODES:
IBC 2009 & NFPA 2009

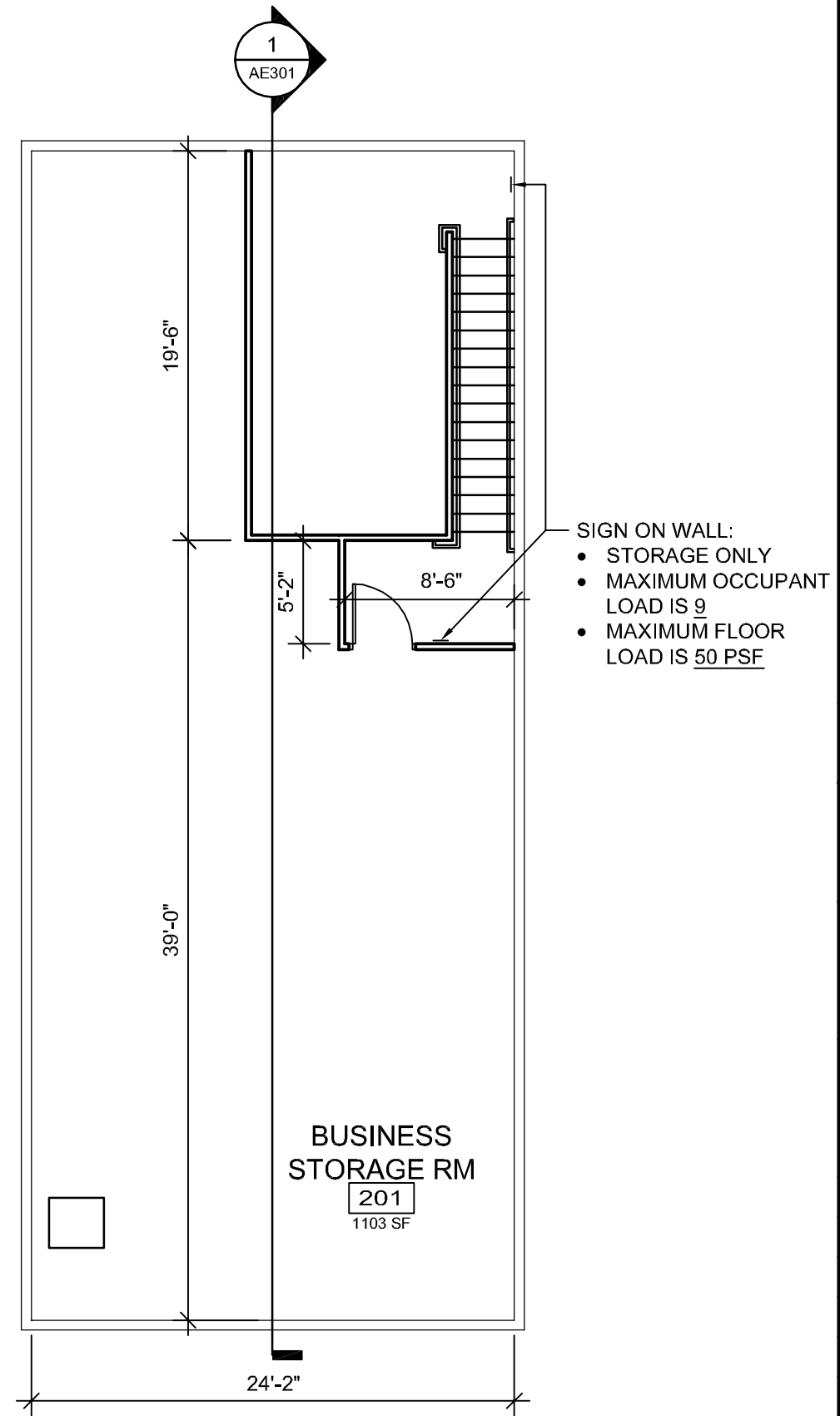
OCCUPANCY: BUSINESS
CONSTRUCTION TYPE: III B (FULLY SPRINKLED)
TRAVEL DISTANCE TO FIRE EXTINGUISHER IS NOT TO EXCEED 75 FEET
MAXIMUM TRAVEL DISTANCE = 300 FEET
MAXIMUM COMMON PATH = 100 FEET

MODIFY AND EXTEND EXISTING SPRINKLER SYSTEM AS REQUIRED TO PROVIDE FULL FIRE SUPPRESSION COVERAGE TO ALL SPACES, IN ACCORDANCE WITH NFPA 13, STATE FIRE MARSHAL'S OFFICE, AND CITY OF PORTLAND, MAINE REQUIREMENTS.

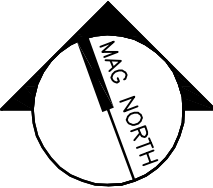
-  FIRE EXTINGUISHER
-  ADA CLEARANCES
-  WALL MOUNTED EXIT SIGN
-  BATTERY PACK WITH EMERGENCY LAMPS AS SHOWN
-  REMOTE EMERGENCY LAMP LIGHT FIXTURES
-  WALL MOUNTED FIRE ALARM SYSTEM MANUAL PULL STATION
-  FIRE ALARM SYSTEM WALL MOUNTED AUDIO/VISUAL DEVICE



2 SECOND FLOOR CODE PLAN
1/8" = 1'-0"



1 SECOND FLOOR PLAN
1/8" = 1'-0"


PROJECT NORTH

GRAPHIC SCALE:
0" 1"

WBRC
ARCHITECTS · ENGINEERS
WWW.WBRCMAINE.COM
LICENSE: MAINE 20-00-01
PORTLAND, MAINE 20-00-01
BANGOR, FLORIDA 14-00-01

PROJECT:
**585 RIVERSIDE
- CARPENTERS
UNION RENO**

SHEET TITLE:
FLOOR PLANS

SCALE: 1/8" = 1'-0"

WBRC CAD FILE:
PROJECT No. 4003.00
JOB CAP/DRAW: /RAD
PM: MEJ
CHECKED BY: MEJ
DATE: 03-11-2015
SHEET No.

AE102

© COPYRIGHT 2015 WBRC