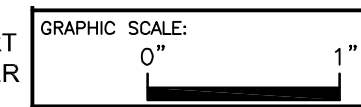


PROJECT NORTH



PROJECT:
585 RIVERSIDE - CARPENTERS UNION RENO

SHEET TITLE:
FLOOR PLANS

SCALE: 1/8" = 1'-0"

WBRC CAD FILE:

PROJECT No. 4003.00

JOB CAP/DRAW: /RAD

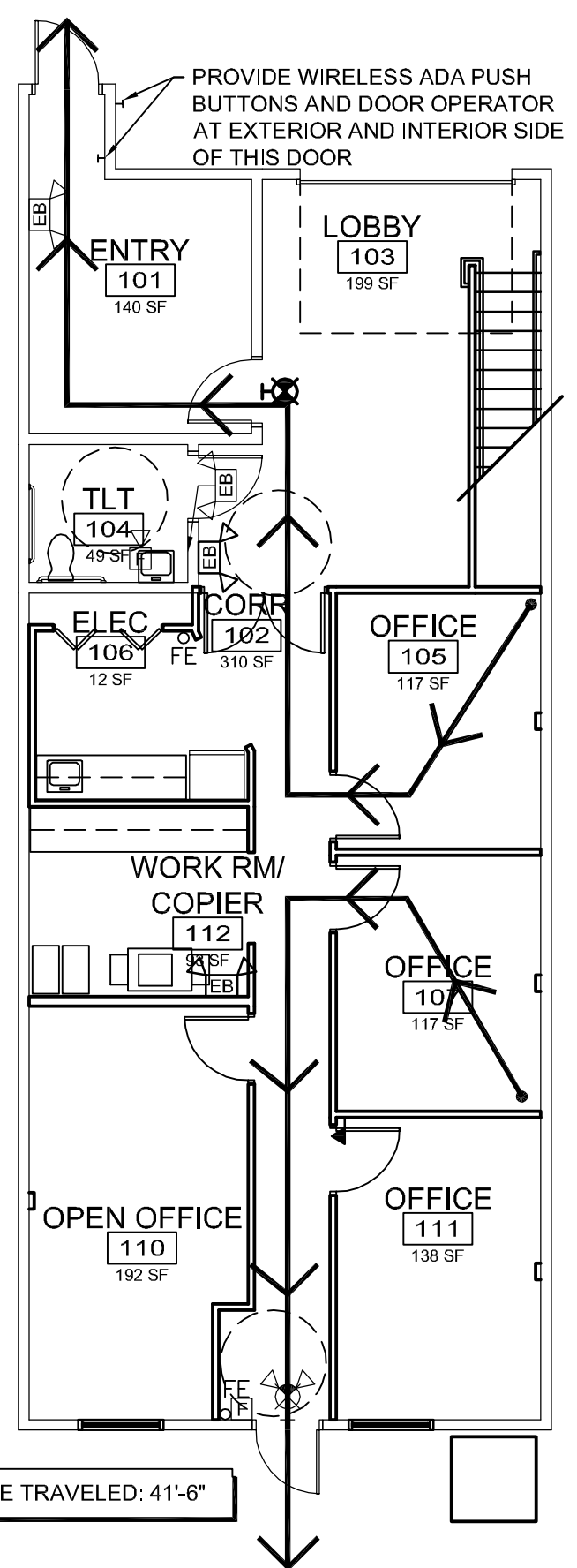
PM: MEJ

CHECKED BY: MEJ

DATE: 03-11-2015

SHEET No.

AE101



DISTANCE TRAVELED: 60'-1"

APPLICABLE CODES:
 IBC 2009 & NFPA 2009

OCCUPANCY: BUSINESS
 CONSTRUCTION TYPE: III B (FULLY SPRINKLED)
 TRAVEL DISTANCE TO FIRE EXTINGUISHER IS NOT TO EXCEED 75 FEET
 MAXIMUM TRAVEL DISTANCE = 300 FEET
 MAXIMUM COMMON PATH = 100 FEET

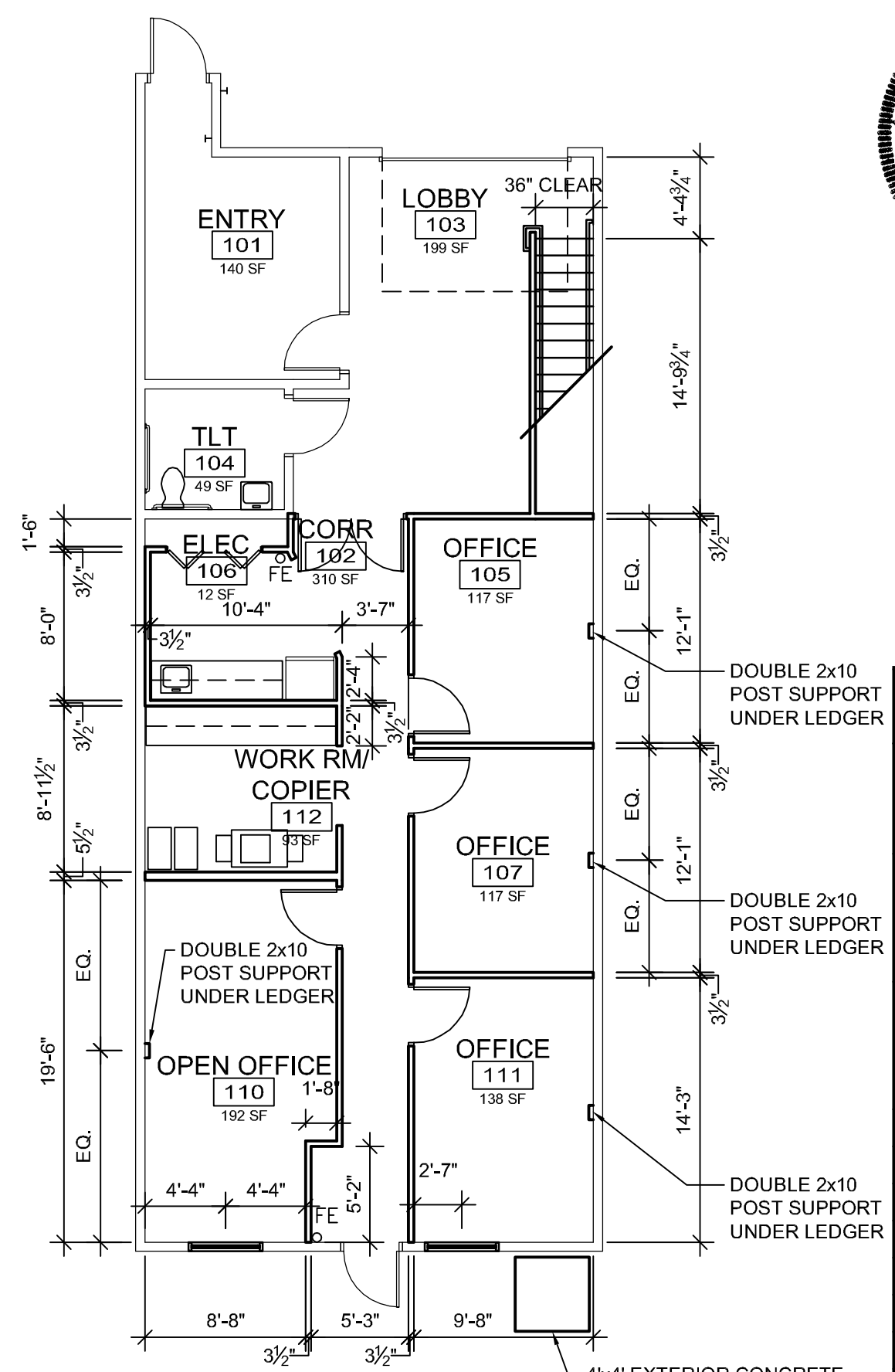
MODIFY AND EXTEND EXISTING SPRINKLER SYSTEM AS REQUIRED TO PROVIDE FULL FIRE SUPPRESSION COVERAGE TO ALL SPACES, IN ACCORDANCE WITH NFPA 13, STATE FIRE MARSHAL'S OFFICE, AND CITY OF PORTLAND, MAINE REQUIREMENTS.

- FIRE EXTINGUISHER
- ADA CLEARANCES
- WALL MOUNTED EXIT SIGN
- BATTERY PACK WITH EMERGENCY LAMPS AS SHOWN
- REMOTE EMERGENCY LAMP LIGHT FIXTURES
- WALL MOUNTED FIRE ALARM SYSTEM MANUAL PULL STATION
- FIRE ALARM SYSTEM WALL MOUNTED AUDIO/VISUAL DEVICE

DISTANCE TRAVELED: 41'-6"

2 FIRST FLOOR CODE PLAN

1/8" = 1'-0"



1 FIRST FLOOR PLAN

1/8" = 1'-0"