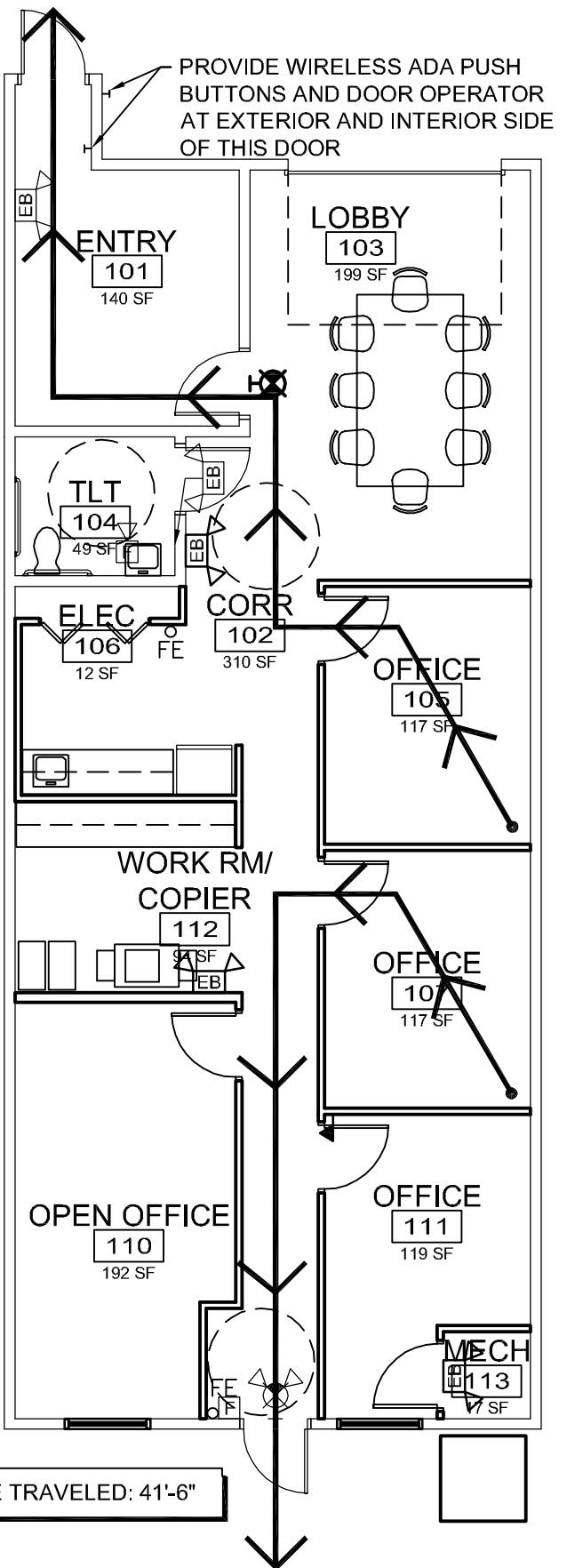


DISTANCE TRAVELED: 52'-8"



DISTANCE TRAVELED: 41'-6"

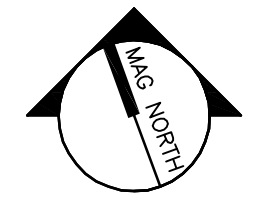
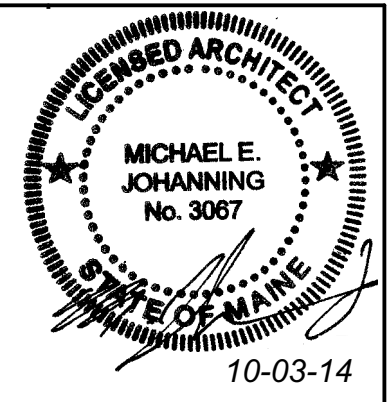
2 FIRST FLOOR CODE PLAN
1/8" = 1'-0"

APPLICABLE CODES:
IBC 2009 & NFPA 2009

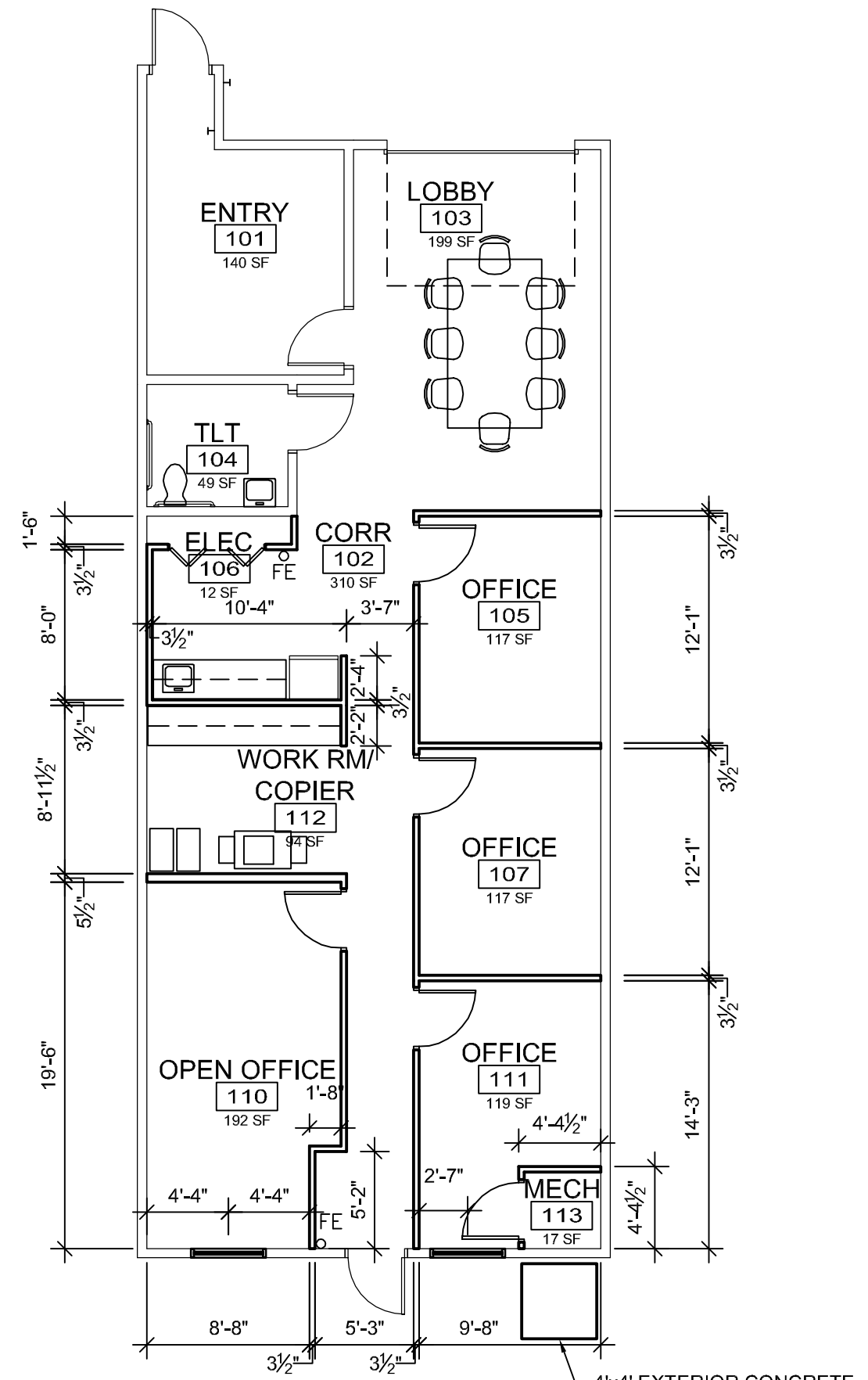
OCCUPANCY: BUSINESS
CONSTRUCTION TYPE: III B (FULLY SPRINKLED)
TRAVEL DISTANCE TO FIRE EXTINGUISHER IS NOT TO EXCEED 75 FEET
MAXIMUM TRAVEL DISTANCE = 300 FEET
MAXIMUM COMMON PATH = 100 FEET

MODIFY AND EXTEND EXISTING SPRINKLER SYSTEM AS REQUIRED TO PROVIDE FULL FIRE SUPPRESSION COVERAGE TO ALL SPACES, IN ACCORDANCE WITH NFPA 13, STATE FIRE MARSHAL'S OFFICE, AND CITY OF PORTLAND, MAINE REQUIREMENTS.

- FE FIRE EXTINGUISHER
- ADA CLEARANCES
- WALL MOUNTED EXIT SIGN
- BATTERY PACK WITH EMERGENCY LAMPS AS SHOWN
- REMOTE EMERGENCY LAMP LIGHT FIXTURES
- WALL MOUNTED FIRE ALARM SYSTEM MANUAL PULL STATION
- FIRE ALARM SYSTEM WALL MOUNTED AUDIO/VISUAL DEVICE



PROJECT NORTH



1 FIRST FLOOR PLAN
1/8" = 1'-0"

WBRC
ARCHITECTS · ENGINEERS
WWW.WBRCMAINE.COM
LICENSED ARCHITECTS: MICHAEL E. JOHANNING, MICHAEL J. WATSON
LICENSED ENGINEERS: MICHAEL J. WATSON, MICHAEL E. JOHANNING

PROJECT:
585 RIVERSIDE - CARPENTERS UNION RENO

SHEET TITLE:
FLOOR PLANS

SCALE: 1/8" = 1'-0"

WBRC CAD FILE:

PROJECT No. 4003.00

JOB CAP/DRAW: /RAD

PM: MEJ

CHECKED BY: MEJ

DATE: 10-02-2014

SHEET No.
AE101

© COPYRIGHT 2014 WBRC