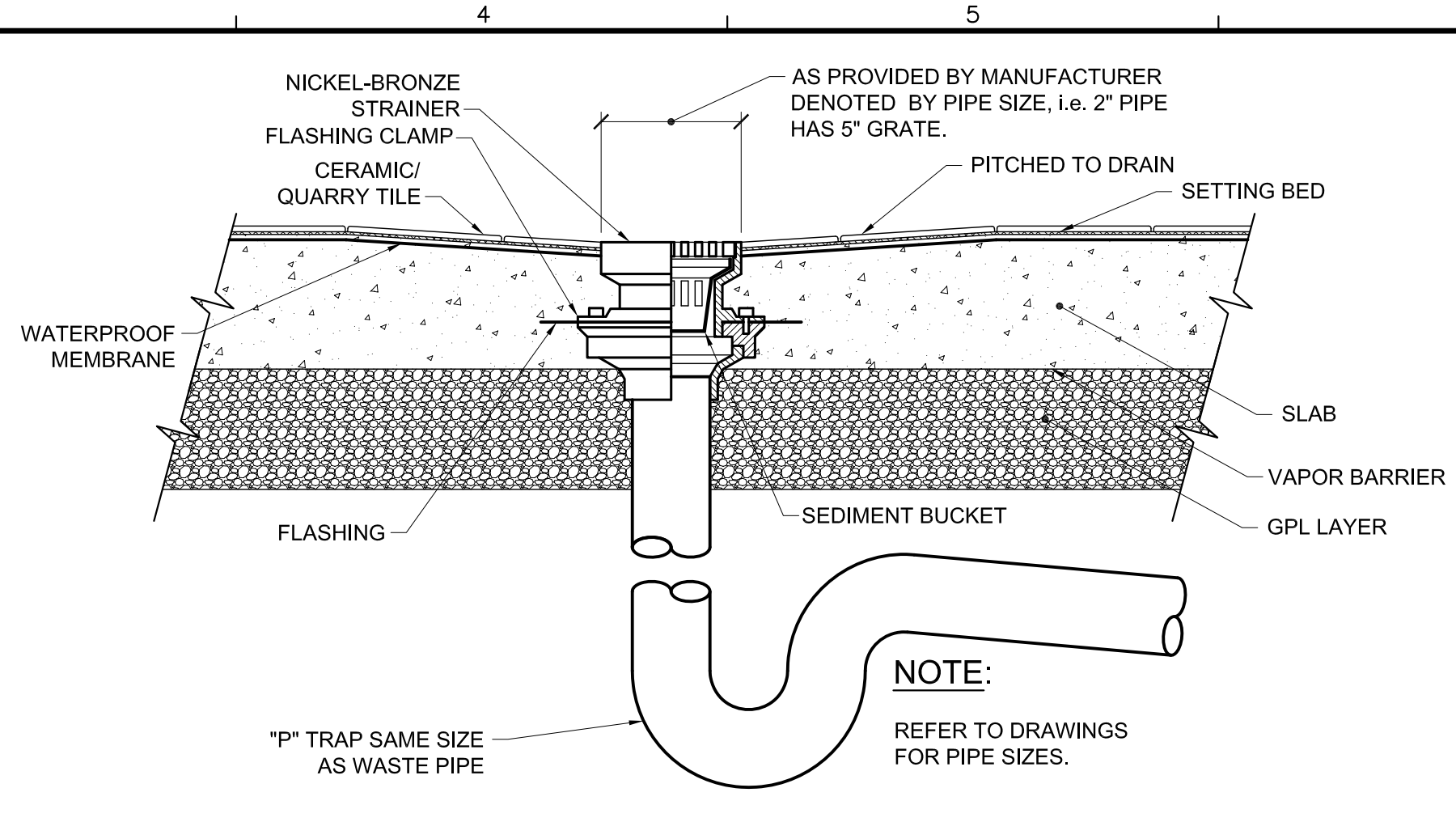


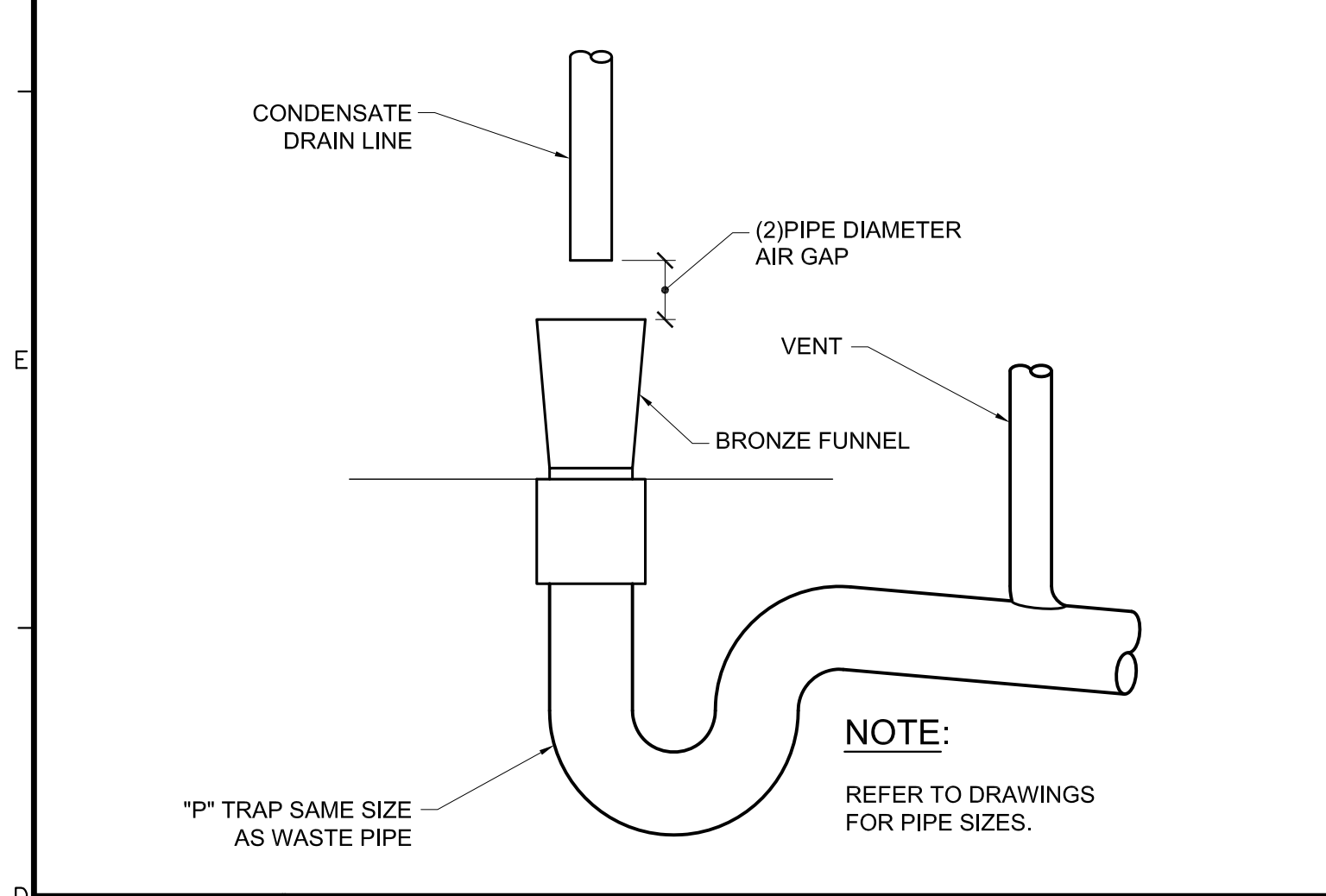
F1 DETAIL ~ RECIRC PUMP PIPING (RCP-2)

NONE



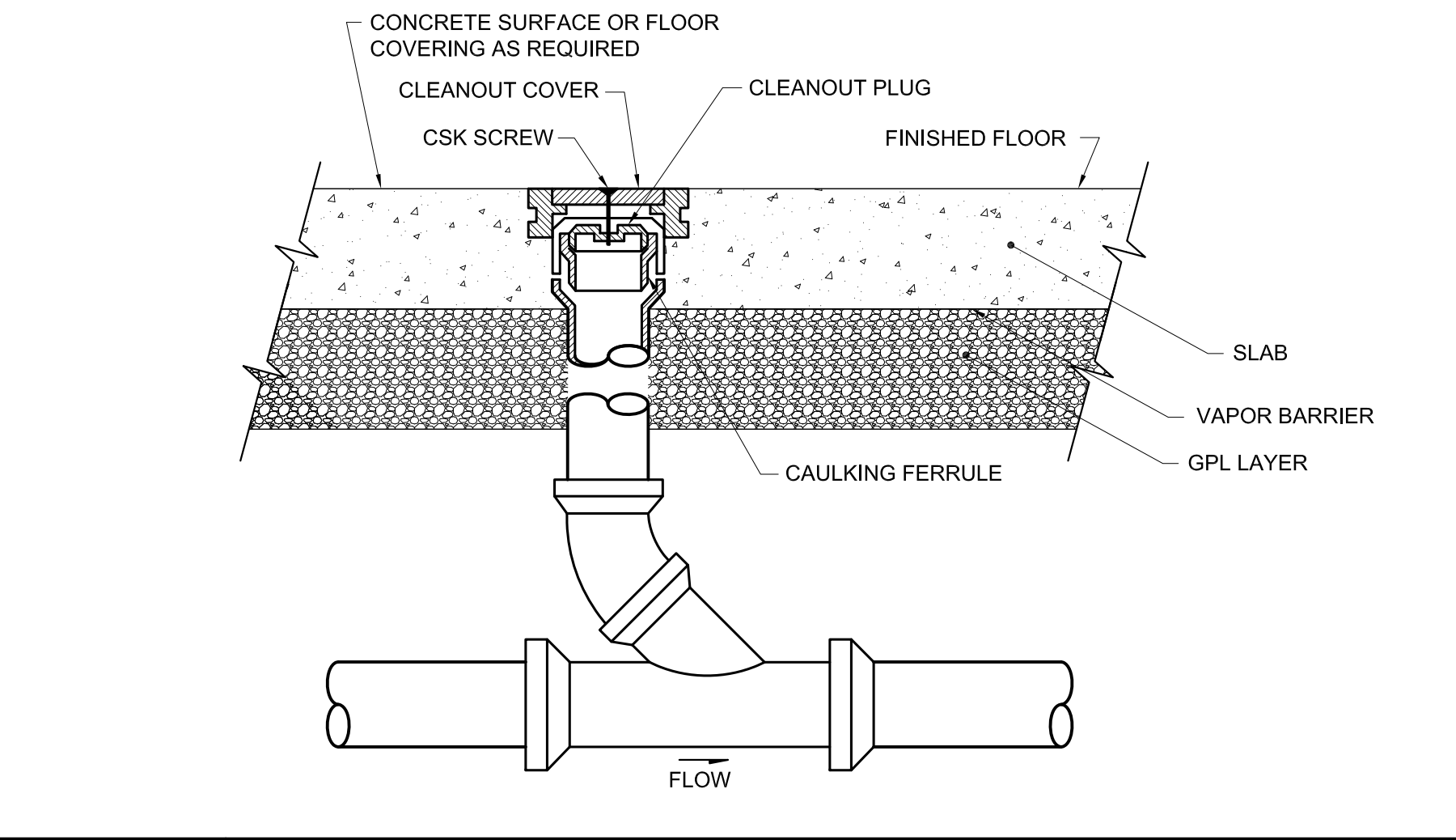
F3 DETAIL ~ FLOOR DRAIN

NONE



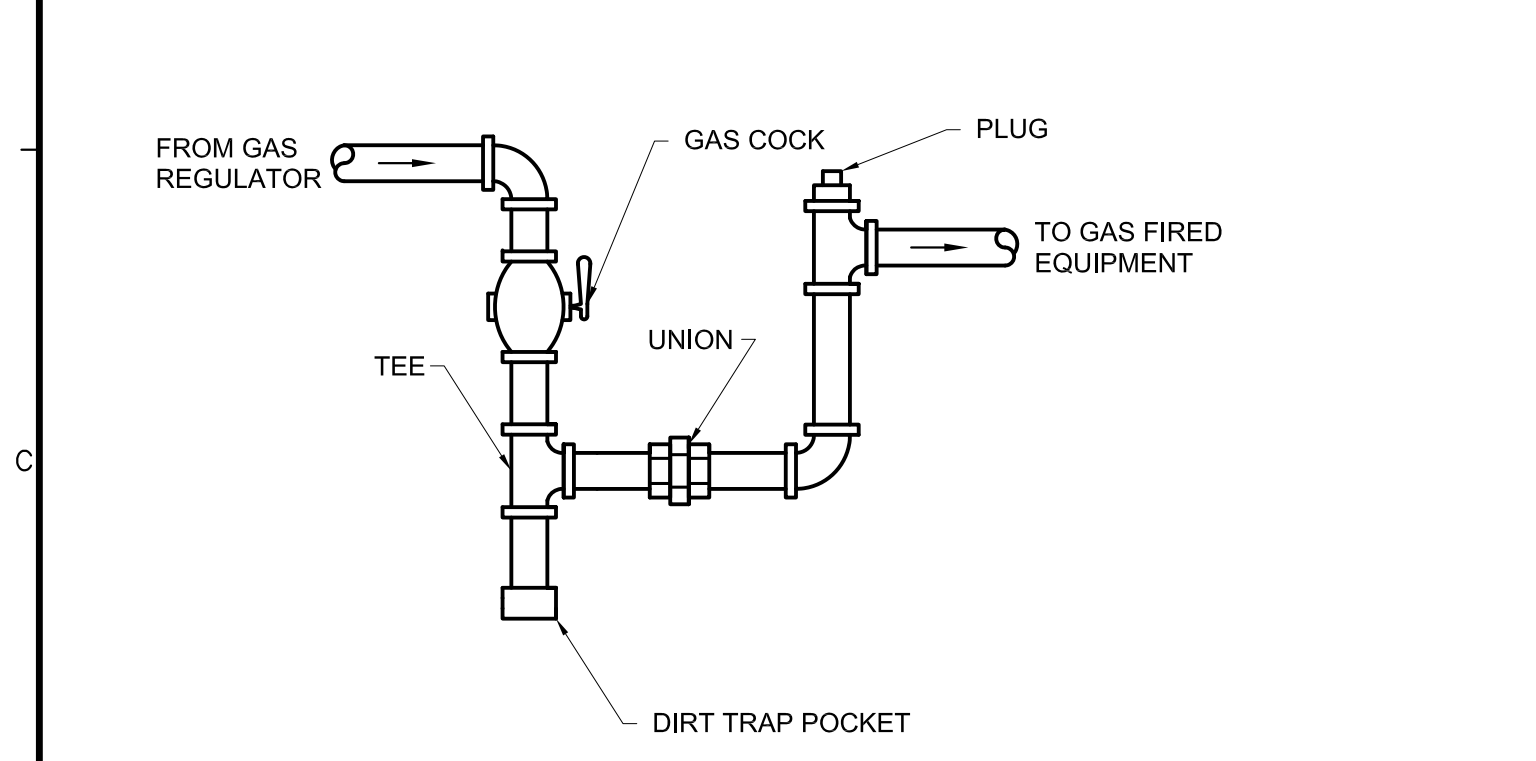
D1 DETAIL ~ HUB FUNNEL DRAIN

NONE



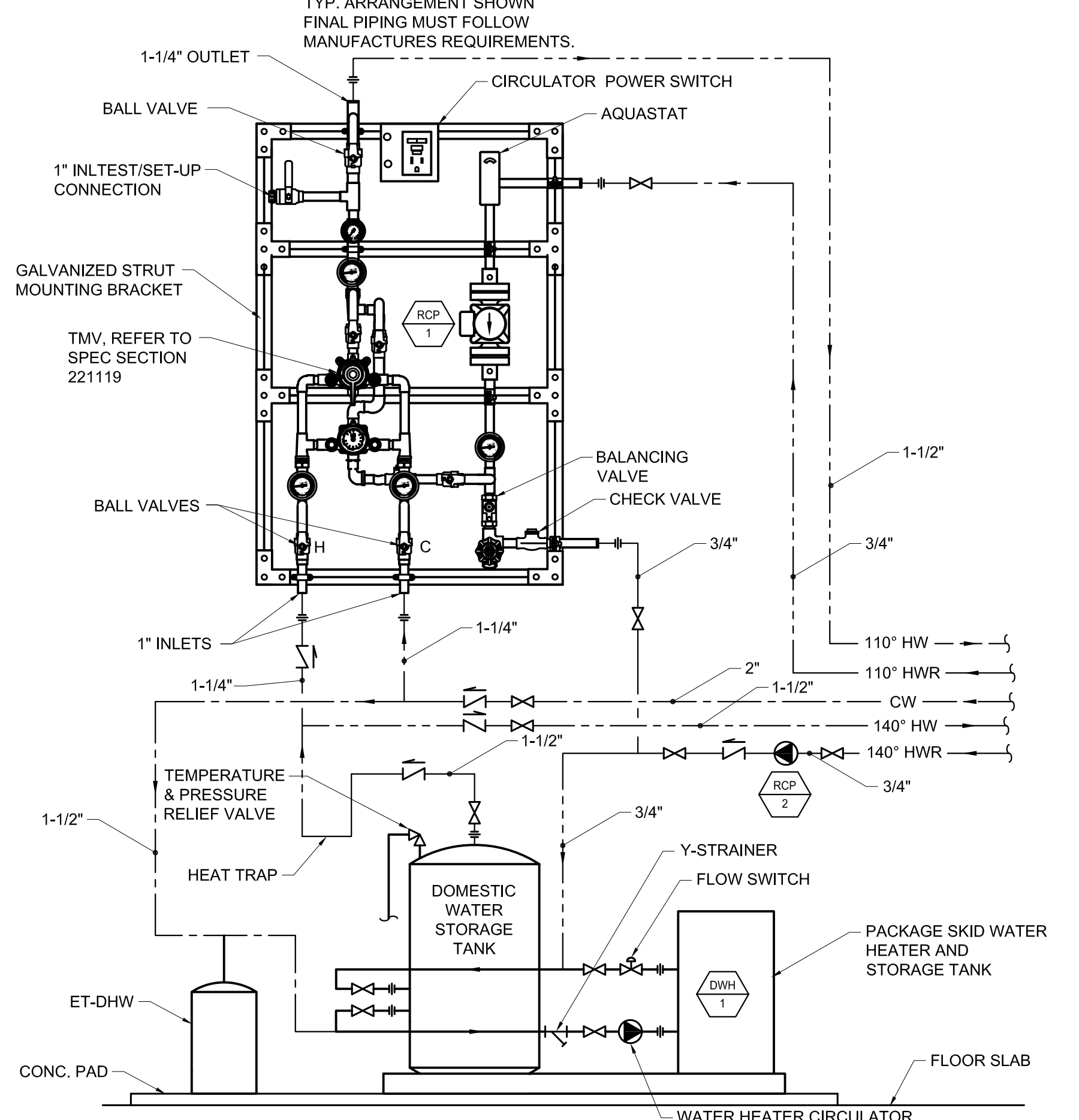
D3 DETAIL ~ FLOOR CLEAN OUT

NONE



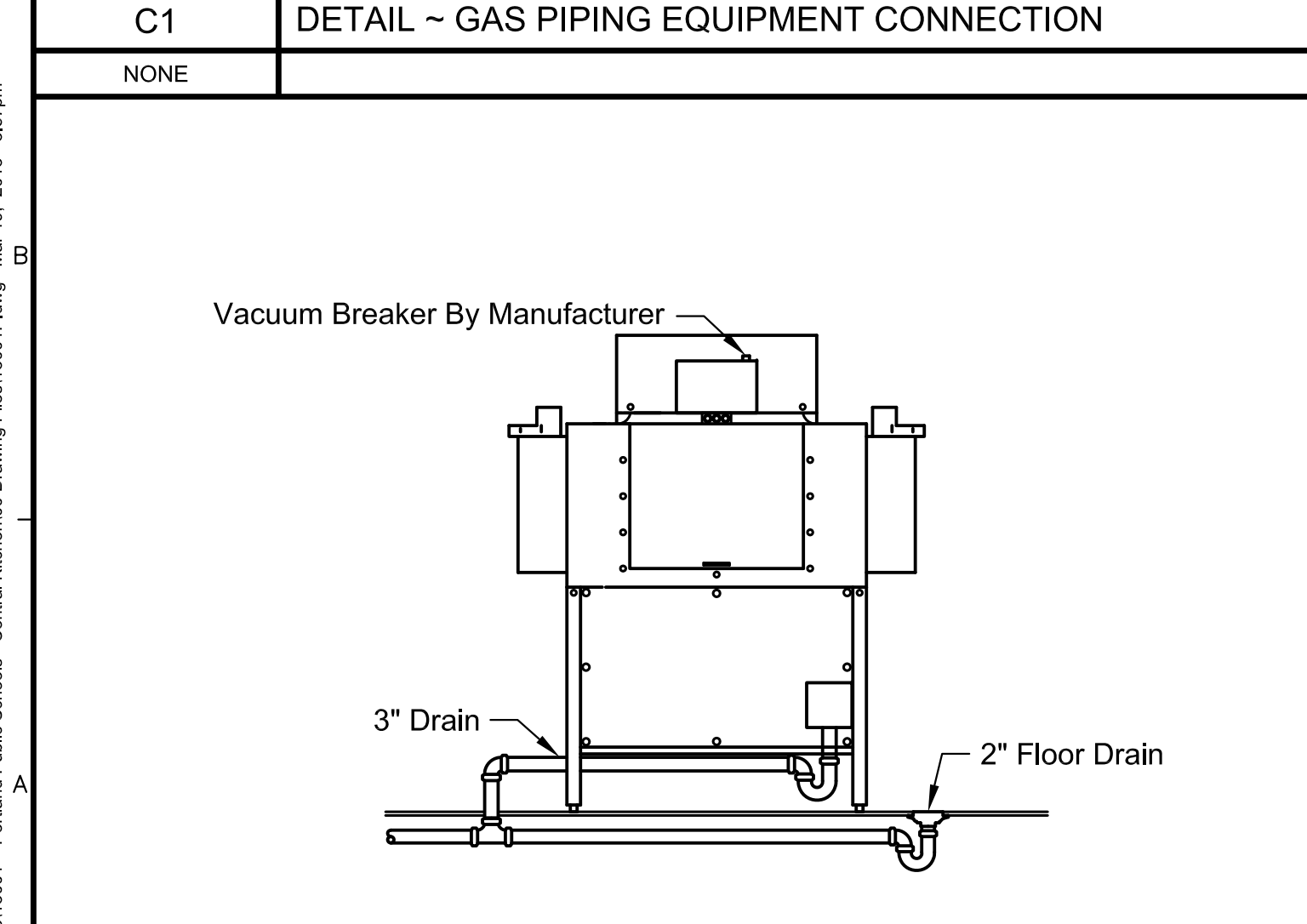
C1 DETAIL ~ GAS PIPING EQUIPMENT CONNECTION

NONE



A3 DETAIL ~ DOMESTIC WATER HEATER AND MIXING VALVE PIPING

NONE



A1 DETAIL ~ DISHWASHER WASTE PIPING

NONE

AIR COMPRESSOR SCHEDULE												
TAG	MANUFACTURER AND MODEL NUMBER	MAXIMUM FLOW EA PUMP (ACFM)	RECEIVER		ELECTRICAL			PHYSICAL			NOTES	
			SIZE (GAL)	RECEIVER TYPE	HEIGHT/DIA (IN)	MOTOR QUAN.	MOTOR SIZE (HP)	VOLT/PH	LENGTH/WIDTH/HEIGHT (IN)	WEIGHT		OUTLET
CA-1	INGERSOLL RAND	11.3 @ 90 PSI	60	VERT	VERT	1	3	230/1	20" X 23" X 66"	295#	1/2"	

NOTES:
 1. PROVIDE 115/1 ELECTRONIC DRAIN WITH STRAINER AND TIMERS. INGERSOLL RAND # 54410931
 2. STARTER PACKAGED WITH UNIT, DISCONNECT SWITCH BY DIVISION 26.

PLUMBING PUMP SCHEDULE												
TAG	SERVES	MAKE & MODEL	TYPE	GPM	HEAD	ELECTRICAL		INLET SIZE	DISCH SIZE	CONTACTOR PROVIDED BY	DISC. SWITCH PROVIDED BY	NOTES
						MOTOR HP	VOLTS/PH (60 Hz.)					
RCP-1	DHW RECIRC TEMPERED	TACO IL 0011	WET ROTOR	3	13	1/20	115/1	3/4"	3/4"	NOTE 2	NOTE 2	NOTE 1, 2
RCP-2	DHW RECIRC - 140F	TACO IL 0011	WET ROTOR	3	13	1/20	115/1	3/4"	3/4"	NOTE 2	NOTE 2	NOTE 1

NOTES:
 1. POWER SUPPLY TO STARTER/CONTACTOR AND DISC SWITCH BY DIV 26. WIRE PUMP IN SERIES WITH AN IMMERSION AQUASTAT. WIRING FROM SWITCH TO AQUASTAT AND PUMP BY DIV 23.
 2. RCP-1 IS PART OF THE THERMOSTATIC WATER MIXING VALVE PACKAGE SPECIFIED IN SECTION 221119; COMPLETE WITH CONTROL, CONTACTOR, AND DISCONNECT.

KITCHEN EQUIPMENT SCHEDULE														
TAG	DESCRIPTION	BRANCH SIZES						COMP. AIR		NAT. GAS		NOTES		
		CW	CW FILTERED	110F HW	140F HW	VENT	DIRECT WASTE	INDIRECT WASTE	SIZE	CFM	PSIG		SIZE	MBTU
P-1	HAND SINK	1/2"	----	1/2"	----	1-1/2"	1-1/2"	----	----	----	----	----	----	----
P-8	PRODUCE SOAK SINK	1/2"	----	1/2"	----	1-1/2"	1-1/2"	----	1-1/2"	----	----	----	----	----
P-9	WORK TABLE WITH SINKS	1/2"	----	1/2"	----	1-1/2"	1-1/2"	----	2"	----	----	----	----	----
P-14	PEELER, VEGETABLE	1/2"	----	1/2"	----	1-1/2"	1-1/2"	----	2"	----	----	----	----	----
P-15	HOSE REEL	1/2"	----	1/2"	----	1-1/2"	1-1/2"	----	----	----	----	----	----	----
P-19	KETTLE/MIXER	1/2"	----	1/2"	----	1-1/2"	1-1/2"	----	----	----	----	----	----	----
P-20	FLOOR TROUGH	----	----	----	----	1-1/2"	3"	----	----	----	----	----	----	----
P-21	PUMP, FOOD FILLING STATION	----	----	----	----	1-1/2"	3"	----	1/2"	90	10	----	----	----
P-23	GALLON MASTER WATER METER	----	----	----	3/4"	----	----	----	----	----	----	----	----	----
P-26	TILTING KETTLE, 40 GALLON	1/2"	----	1/2"	----	1-1/2"	1-1/2"	----	----	----	----	3/4"	126	----
P-27	FLOOR TROUGH	----	----	----	----	1-1/2"	3"	----	----	----	----	----	----	----
P-28	RANGE, FOUR BURNER	----	----	----	----	1-1/2"	1-1/2"	----	----	----	----	3/4"	132	----
P-29	COMBI-OVEN, ROLL-IN	3/4"	3/4"	----	----	1-1/2"	1-1/2"	----	2"	----	----	3/4"	126	----
P-31	BLAST CHILLER	----	----	----	----	1-1/2"	1-1/2"	----	3/4"	----	----	----	----	----
P-32	BLAST CHILLER / SHOCK FREEZER	----	----	----	----	1-1/2"	1-1/2"	----	1-1/4"	----	----	----	----	----
P-40	DISHWASHER, FLIGHT TYPE	----	----	3/4"	----	1-1/2"	1-1/2"	----	2"	----	----	----	----	----
P-43	SINK, 3-COMPARTMENT	1/2"	----	1/2"	----	1-1/2"	1-1/2"	----	2"	----	----	----	----	----
P-44	POT AND PAN WASHER	----	----	3/4"	----	1-1/2"	1-1/2"	----	1-1/2"	----	----	----	----	----
P-46	MOP SINK	1/2"	----	1/2"	----	1-1/2"	1-1/2"	----	2"	----	----	----	----	----
P-50	EVAPORATOR COIL, COOLER	----	----	----	----	1-1/2"	1-1/2"	----	3/4"	----	----	----	----	----
P-52	EVAPORATOR COIL	----	----	----	----	1-1/2"	1-1/2"	----	3/4"	----	----	----	----	----
FD-1	FLOOR DRAIN	----	----	----	----	1-1/2"	2"	----	----	----	----	----	----	----
FD-2	FLOOR DRAIN	----	----	----	----	1-1/2"	3"	----	----	----	----	----	----	----
FS-1	FLOOR SINK	----	----	----	----	1-1/2"	2"	----	----	----	----	----	----	----
HD-1	HUB DRAIN	----	----	----	----	1-1/2"	2"	----	----	----	----	----	----	----
FW-1	FOOT WASH HOOK-UP	1/2"	----	----	----	1-1/2"	1-1/2"	----	1/2"	----	----	----	----	(E) RELOCATED
W-1	WASHER HOOK-UP	1/2"	----	1/2"	----	1-1/2"	1-1/2"	----	----	----	----	----	----	----

GAS STORAGE TYPE DHW HEATER	
HEATER TAG	DHW-1
MANUFACTURER	LOCHINVAR
HEATER MODEL	AWN801PM
GROSS INPUT (MBH)	800,000
GPH @ 100degF RISE	931
THERMAL EFFICIENCY (%)	98.0%
WATER STORAGE TEMP	140F
FUEL	NAT GAS
VENTING	VERT CONCENTRIC
VENT CONN. DIA (IN.)	6"
VENT MATERIAL	CPVC
AIR INLET CONN. (IN.)	4"
AIR INLET MATERIAL	PVC
WATER CONN. (IN.)	2"
GAS CONN. (IN.)	1-1/2"
DRAIN	3/4"
2-STAGE or FULL MOD.	5:1 MOD
MIN / MAX GAS PRS. IN. WG.	4" TO 14"
ELECTRICAL	120-1-60
TOTAL AMPS	12.8
TANK MODEL	LOCHINVAR RJA
TANK SIZE, GALLONS	432
TANK DIAMETER, INCHES	46"
ASME CERTIFICATION	YES
PACKAGED SYSTEM - HEATER AND TANK SKID	
OVERALL LENGTH (IN.)	85"
WIDTH (IN.)	34"
HEIGHT (IN.)	91"
THERMAL EXP TANK	
TAG	ET-DHW
MANUFACTURER	AMTROL
MODEL	ST-60V-C
RELIEF PRESSURE	125 PSIG
SUPPLY PRESSURE	80 PSIG
GALLONS	25
HEIGHT	32"
DIAMETER	16"
SYSTEM CONNECTION	3/4"
SUPPORT	CONC PAD

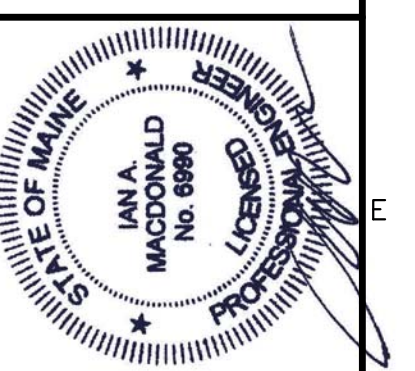
A6 PLUMBING SCHEDULES

NONE

N:\Projects\2013\13001 - Portland Public Schools - Central Kitchen\03 Drawing Files\13001P.dwg Mar 19, 2013 - 3:57pm

160 Veranda Street
 Portland, Maine 04103
 T: 207.221.2260
 F: 207.221.2266
 Web: www.allied-eng.com

Allied Engineering
 Structural Mechanical Electrical Commissioning



REVISIONS			
NUMBER	DATE	BY	DESCRIPTION

PLUMBING SCHEDULES, DETAILS AND NOTES

CITY OF PORTLAND
 PORTLAND PUBLIC SCHOOLS - CENTRAL KITCHEN
 92 WALDRON WAY, PORTLAND, MAINE

PL-500