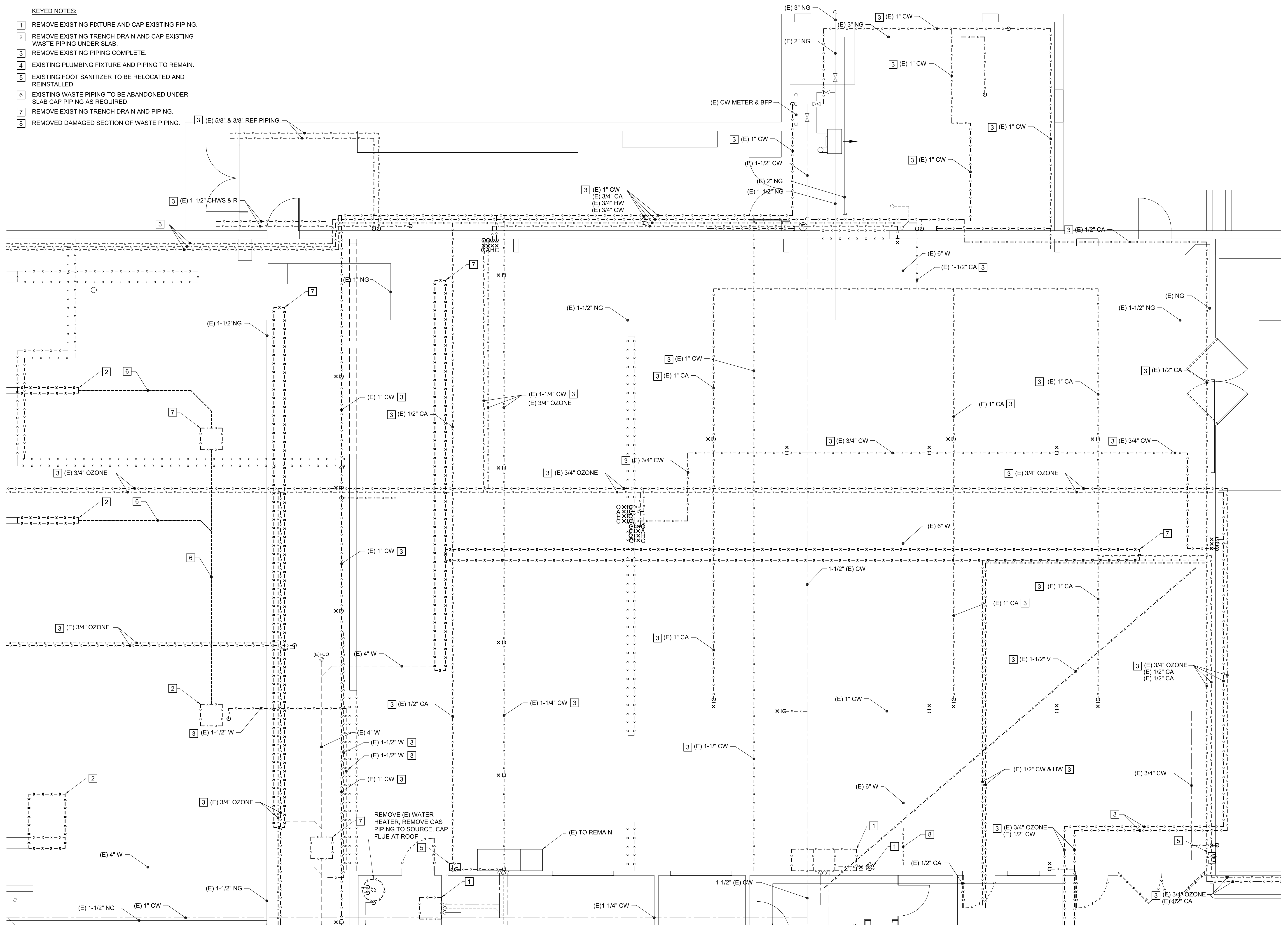


KEYED NOTES:

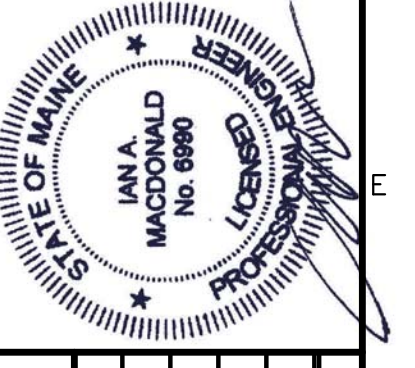
- 1 REMOVE EXISTING FIXTURE AND CAP EXISTING PIPING.
- 2 REMOVE EXISTING TRENCH DRAIN AND CAP EXISTING WASTE PIPING UNDER SLAB.
- 3 REMOVE EXISTING PIPING COMPLETE.
- 4 EXISTING PLUMBING FIXTURE AND PIPING TO REMAIN.
- 5 EXISTING FOOT SANITIZER TO BE RELOCATED AND REINSTALLED.
- 6 EXISTING WASTE PIPING TO BE ABANDONED UNDER SLAB CAP PIPING AS REQUIRED.
- 7 REMOVE EXISTING TRENCH DRAIN AND PIPING.
- 8 REMOVED DAMAGED SECTION OF WASTE PIPING.



N:\Projects\2013\13001 - Portland Public Schools - Central Kitchen\03 Drawing Files\13001P.dwg Mar 19, 2013 - 3:54pm
 © Copyright 2013 Allied Engineering, Inc.

160 Veranda Street
 Portland, Maine 04103
 T: 207.221.2260
 F: 207.221.2266
 Web: www.allied-eng.com

Allied Engineering
 Structural Mechanical Electrical Commissioning



REVISIONS	
NUMBER	DESCRIPTION

Date: 03/20/2013
 Drawn By: SCL
 Checked By: IAM
 Project Mgr: IAM
 Project No: 13001
 Cad File: 13001M.DWG
 Graphic Scale: 0
 Scale: 1"

PLUMBING DEMOLITION PART PLAN
 CITY OF PORTLAND
 PORTLAND PUBLIC SCHOOLS - CENTRAL KITCHEN
 92 WALDRON WAY, PORTLAND, MAINE

PD-100

A1 PLUMBING DEMOLITION PART PLAN
 1/4" = 1'-0"