

CENTRIFUGAL UPBLAST FAN SCHEDULE																			
TAG	SERVES	BASIS OF DESIGN HOOD (SEE FS DRAWINGS)	GREENHECK MODEL	TYPE	DRIVE	CFM	HOOD SP (IN. WC.)	TOTAL SP (IN. WC.)	MAX RPM	ELECTRICAL							DAMPER	NOTES	
										MAX BHP	MOTOR HP	MOTOR SPEED	VFD FURN. BY	DISC. SWITCH FURN. BY	VOLTS/PH	MAX SONES			WEIGHT (LBS.)
EF-18	HOOD 18 - KETTLES	GAYLORD ELX-GBD-AS	CUBE-180-15	GREASE	BELT	2,860	0.85"	1.25"	1089	1.05	1.5	1,725	DIV 23	DIV 23	460/3	14.5	200	BDD	
EF-25	HOOD 25 - COOKING	GAYLORD ELX-GBD-AS	CUBE-180-15	GREASE	BELT	3,030	0.68"	1.25"	1145	1.17	1.5	1,725	DIV 23	DIV 23	460/3	15.5	200	NONE	
EF-41	HOOD 41 NEW DW	GAYLORD	CUBE-121-5	HEAT/MOISTURE	BELT	1,200	0.25"	0.75"	1408	0.3	0.5	1,725	DIV 23	DIV 23	460/3	12.6	120	BDD	
EF-45	HOOD 45 EXST DW	EXST CAPTIVE AIRE V#1	CUBE-141-7	HEAT/MOISTURE	BELT	900	0.25"	0.75"	1553	0.25	1/3	1,725	DIV 23	DIV 23	460/3	9.2	80	BDD	
NOTES:																			
1. BELT DRIVE FANS SHALL BE SELECTED WITH MEDIUM DRIVE LOSS																			

MAKE-UP AIR UNIT SCHEDULE	
INDOOR UNIT:	MUA-1
MANUFACTURER	GREENHECK
DESCRIPTION	DIRECT FIRED
MODEL	DGX-118-H32
WEIGHT	1,800
DESIGN AIRFLOW, cfm	8,000
MINIMUM OUTSIDE AIRFLOW REQ'T	20%
ESP, in.wc.	.75
BHP	4.7
HP	7.5
RPM	882
HEATING	
FUEL	NAT GAS
FUEL PRESSURE	0.5 PSI
GAS CONNECTION	1" NPT
EAT - LAT, deg.F.	-7F - 78.2F
LP INPUT (MBH)	800
LP OUTPUT (MBH)	736
EFFICIENCY	92.0%
HEATER TURNDOWN	15 to 1
FILTERS	MERV 8
SOUND	
LWA	85
DBA	74
SONES	24
ELECTRICAL	
VOLTAGE/HZ/PHASE	460/3/60
STARTER TYPE	VFD BY MUA MFR.
DISCONNECT	PROVIDED BY DIV 26
UNIT MCA	14.6 A
UNIT MCP	25 A
NOTES:	

LOUVER SCHEDULE															
TAG	MAKE - MODEL	AIR SYSTEM	DUTY	CFM	DIMENSIONS					% FREE AREA	BLADE DEPTH	BEGINNING POINT OF WATER PENETRATION AT 0.01	MAX P.D. MAX W.C.	SCREEN	NOTES
					HEIGHT (in.)	WIDTH (in.)	MIN. FREE AREA (SF)	GROSS VELOCITY (FT/MIN)	NET VELOCITY (FT/MIN)						
L-1	RUSKIN ELF6375DX	MAU-1	INTAKE	8,000	72	72	21.53	222.2	371.6	59.8%	6"	1,023 FPM	0.05		SEE SPEC

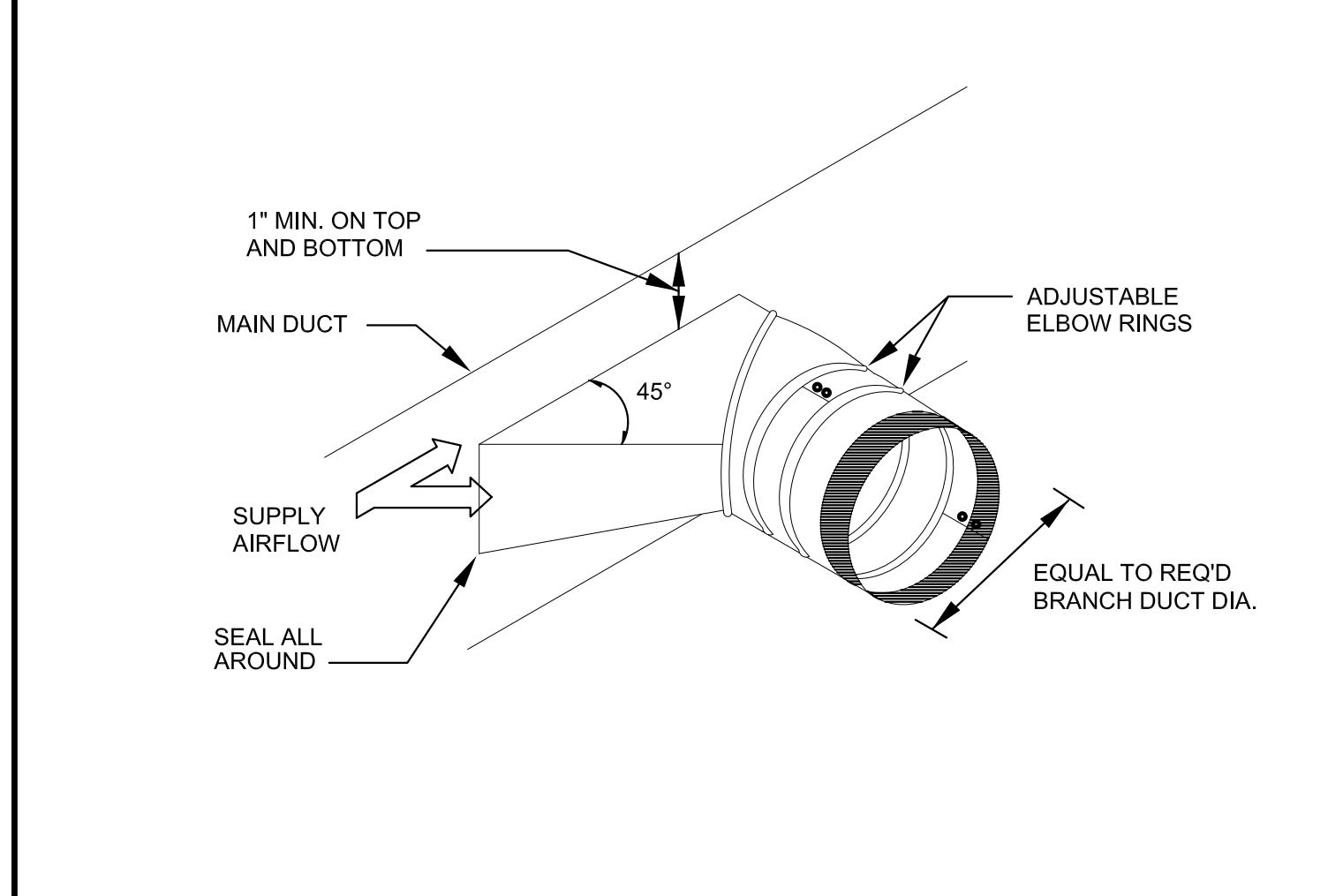
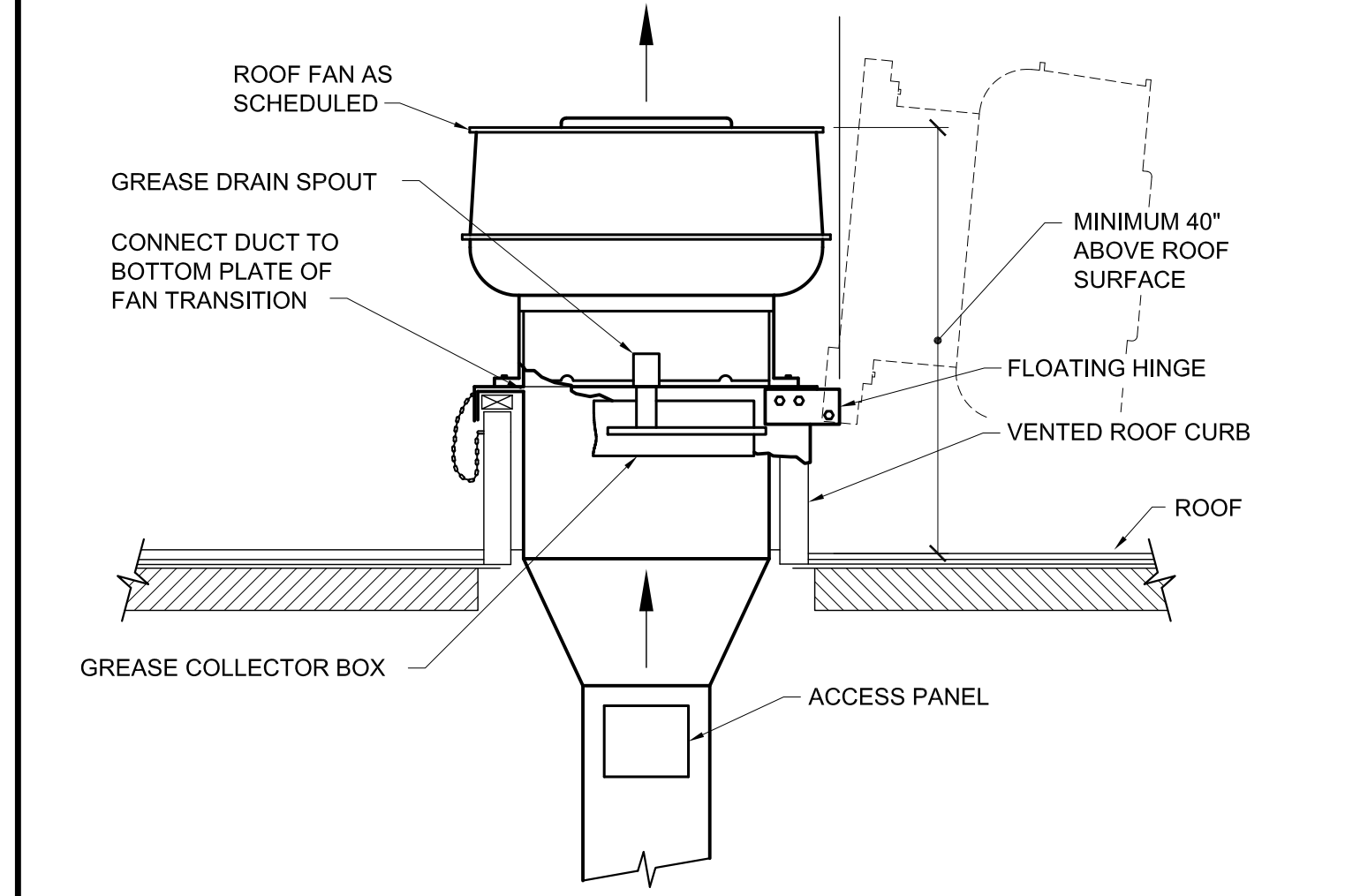
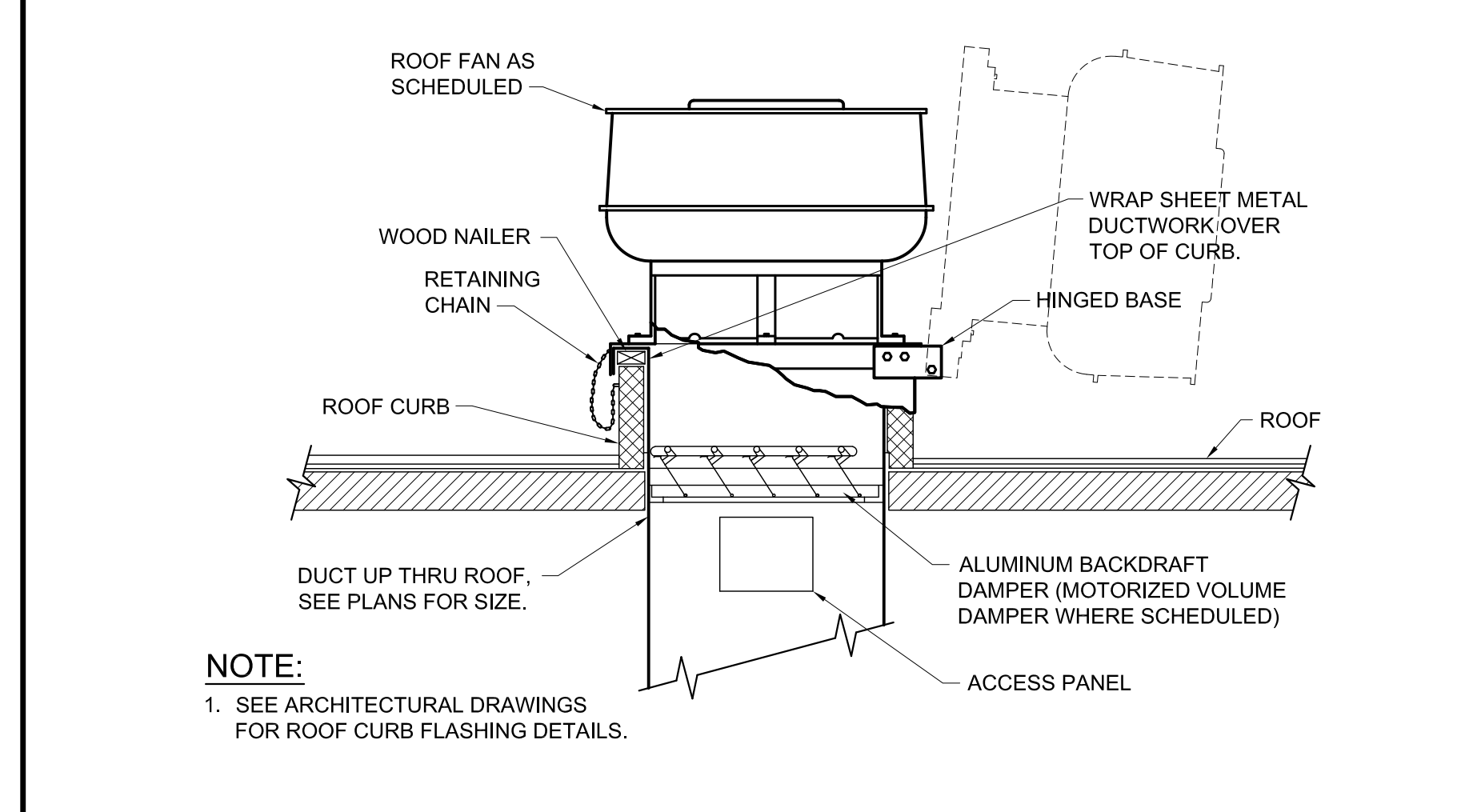
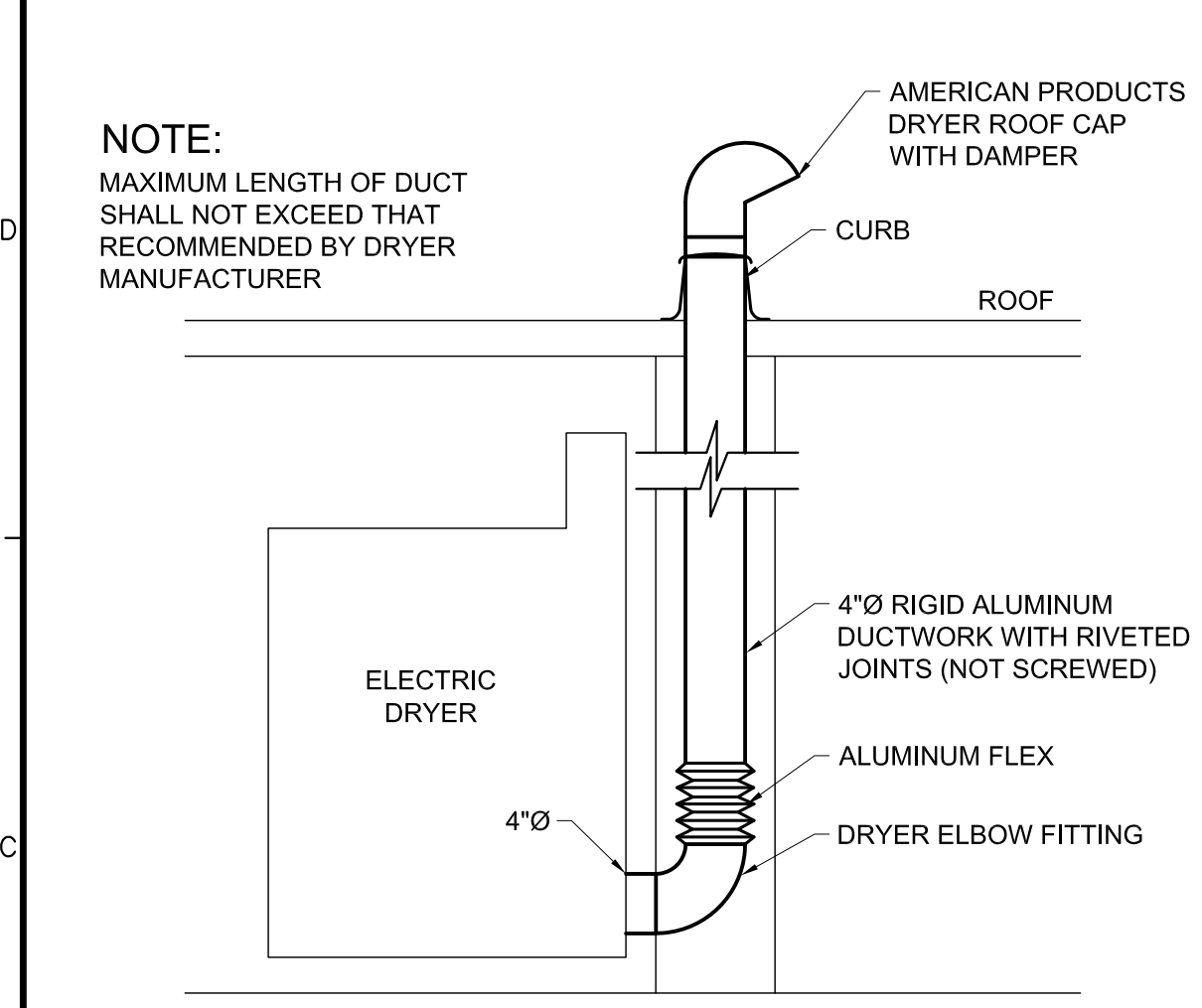
REGISTERS - GRILLES - DIFFUSERS (RGD) SCHEDULE										
TAG	PRICE MODEL	TYPE	NECK SIZE	FACE SIZE	CFM RANGE	MAX TOTAL P.D. (IN.W.C.)	MAX NC LEVEL	BORDER TYPE	BLOW	NOTES
S-1	ASCD4	ALUM. SQ. CEILING SUPPLY DIFFUSER	6" DIA	24" X 24"	0-150	0.07"	16	LAY-IN	4-WAY, ADJUSTABLE	
S-2	ASCD4	ALUM. SQ. CEILING SUPPLY DIFFUSER	8" DIA	24" X 24"	151-275	0.07"	19	LAY-IN	4-WAY, ADJUSTABLE	
S-3	ASCD4	ALUM. SQ. CEILING SUPPLY DIFFUSER	10" DIA	24" X 24"	276-440	0.07"	22	LAY-IN	4-WAY, ADJUSTABLE	
S-4	ASCD4	ALUM. SQ. CEILING SUPPLY DIFFUSER	12" DIA	24" X 24"	441-630	0.07"	24	LAY-IN	4-WAY, ADJUSTABLE	
S-5	520D	STEEL DOUBLE DEFL. SUPPLY REGISTER	10" X 6"	10" X 6"	181-240	0.10"	23	SURFACE MT.	ADJUSTABLE	
R-1	610Z	ALUM RETURN GRILLE, 3/4" SPACING, 0 DEG VANES	48" X 22"	46" X 20"	1901 - 3125	0.05"	24	SURFACE MT.		
R-2	610Z	ALUM RETURN GRILLE, 3/4" SPACING, 0 DEG VANES	48" X 22"	46" X 20"	1901 - 3125	0.05"	24	LAY-IN		

160 Veranda Street
Portland, Maine 04103
T: 207.221.2260
F: 207.221.2266
Web: www.allied-eng.com

Allied Engineering
Structural Mechanical Electrical Commissioning

E1 MECHANICAL SCHEDULES

NONE

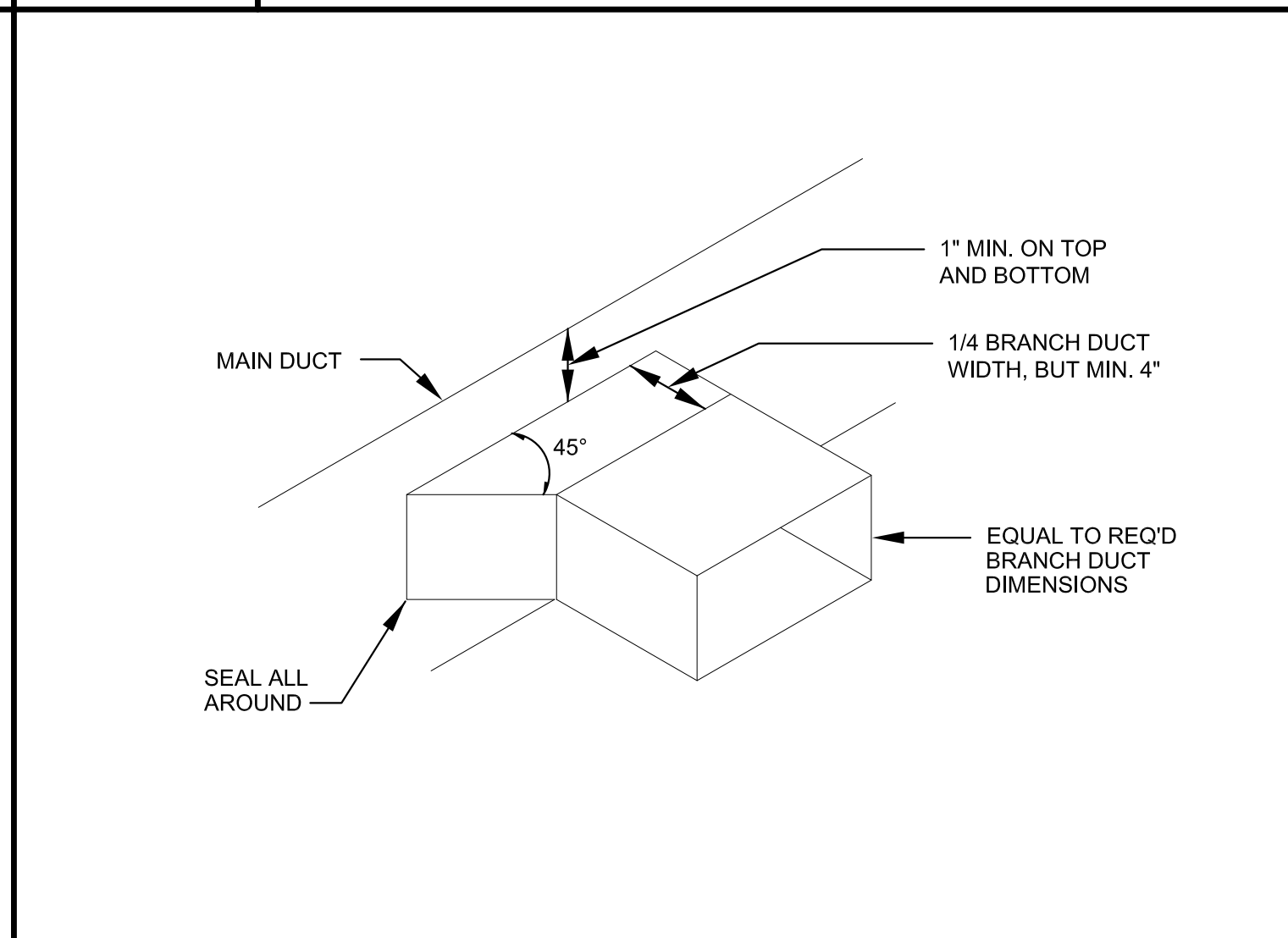
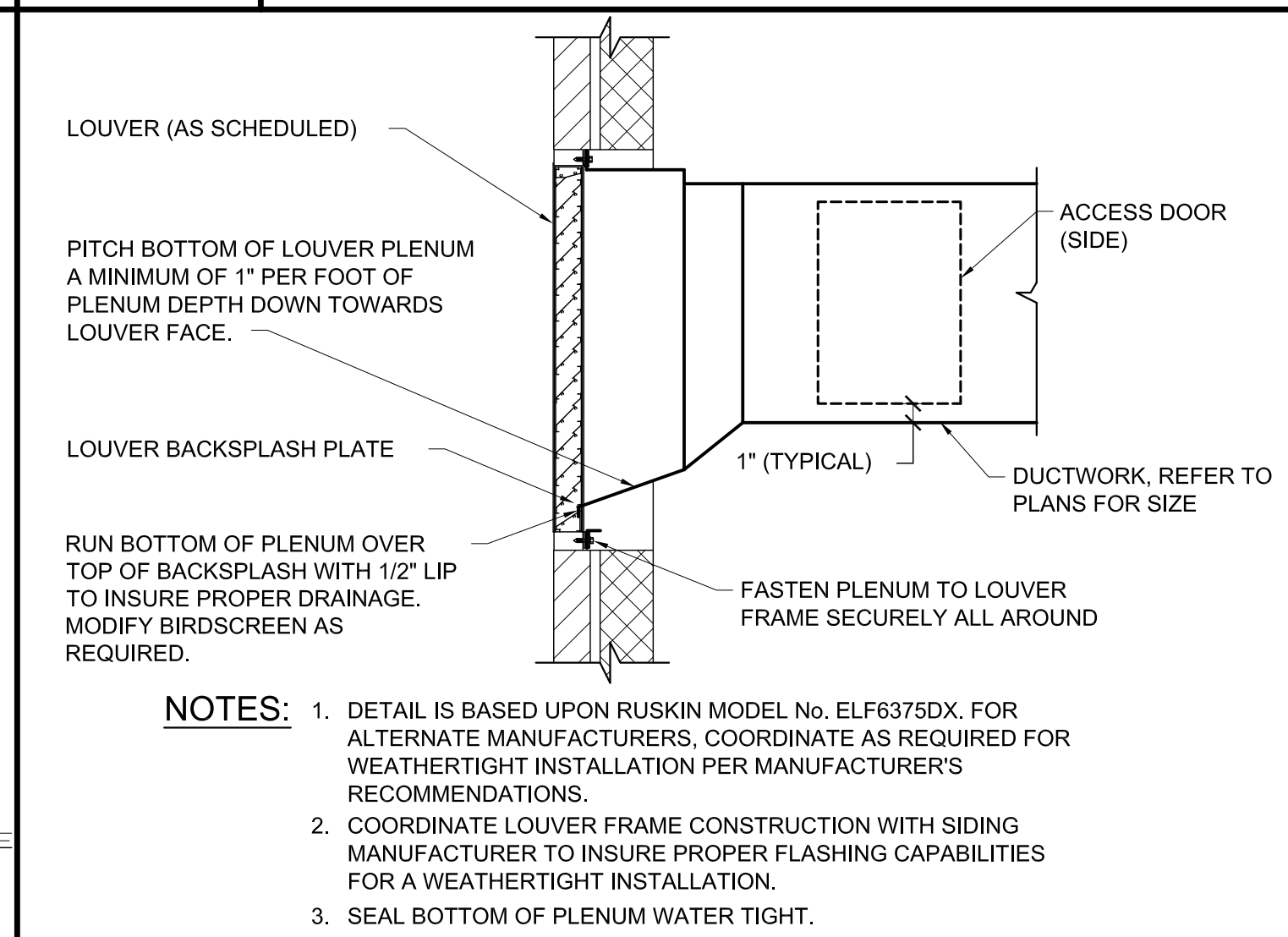
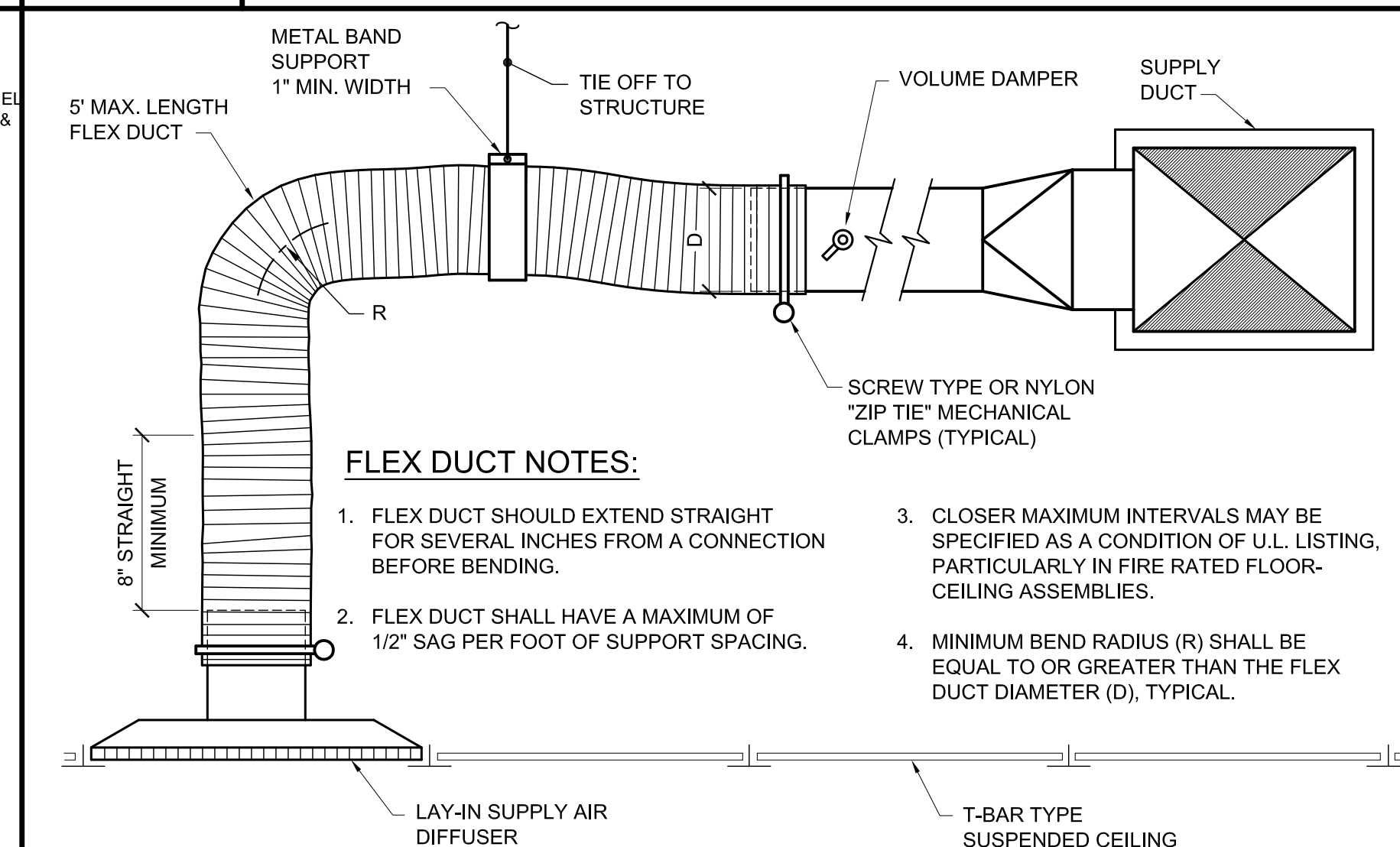
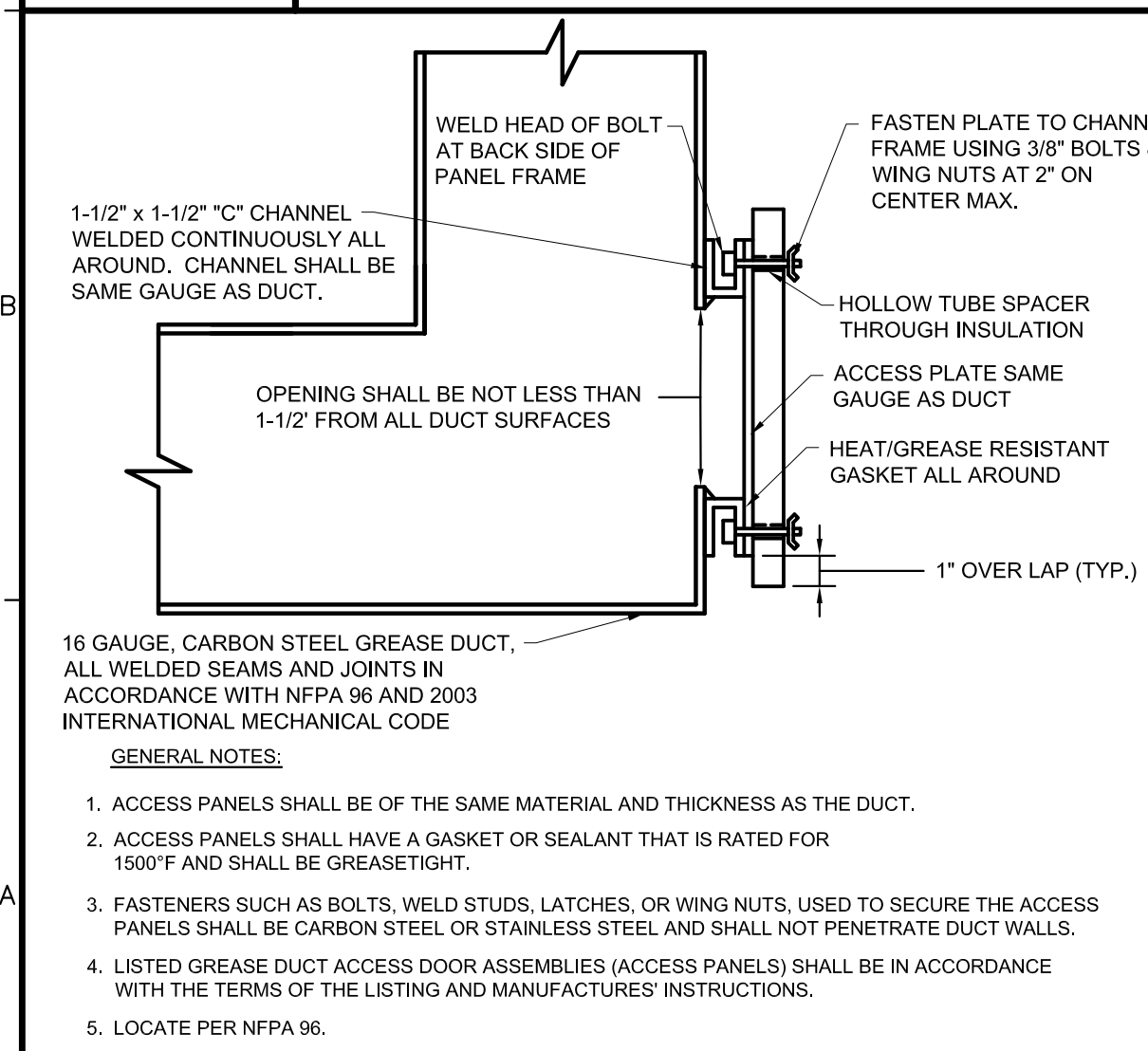


C1 DETAIL ~ DRYER VENT

C3 DETAIL ~ ROOF TOP EXHAUST FAN EF-41 & 45

C6 DETAIL ~ ROOF TOP KITCHEN EXHAUST FAN EF-18 & 25

C8 DETAIL ~ ROUND BRANCH TAKE-OFF FITTING



A1 DETAIL ~ FIRE RATED ACCESS PANEL

A3 DETAIL ~ SUPPLY AIR BRANCH CONNECTION

A6 DETAIL ~ INTAKE LOUVER

A8 DETAIL ~ SQUARE BRANCH TAKE-OFF FITTING

NONE

MECHANICAL SCHEDULES
DETAILS AND NOTES

REVISIONS

NUMBER	DATE	BY	DESCRIPTION

City of Portland
Portland Public Schools - Central Kitchen
92 Waldron Way, Portland, Maine

MH-500

N:\Projects\2013\13001 - Portland Public Schools - Central Kitchen\03 Drawing Files\13001A.dwg Mar 19, 2013 4:05pm