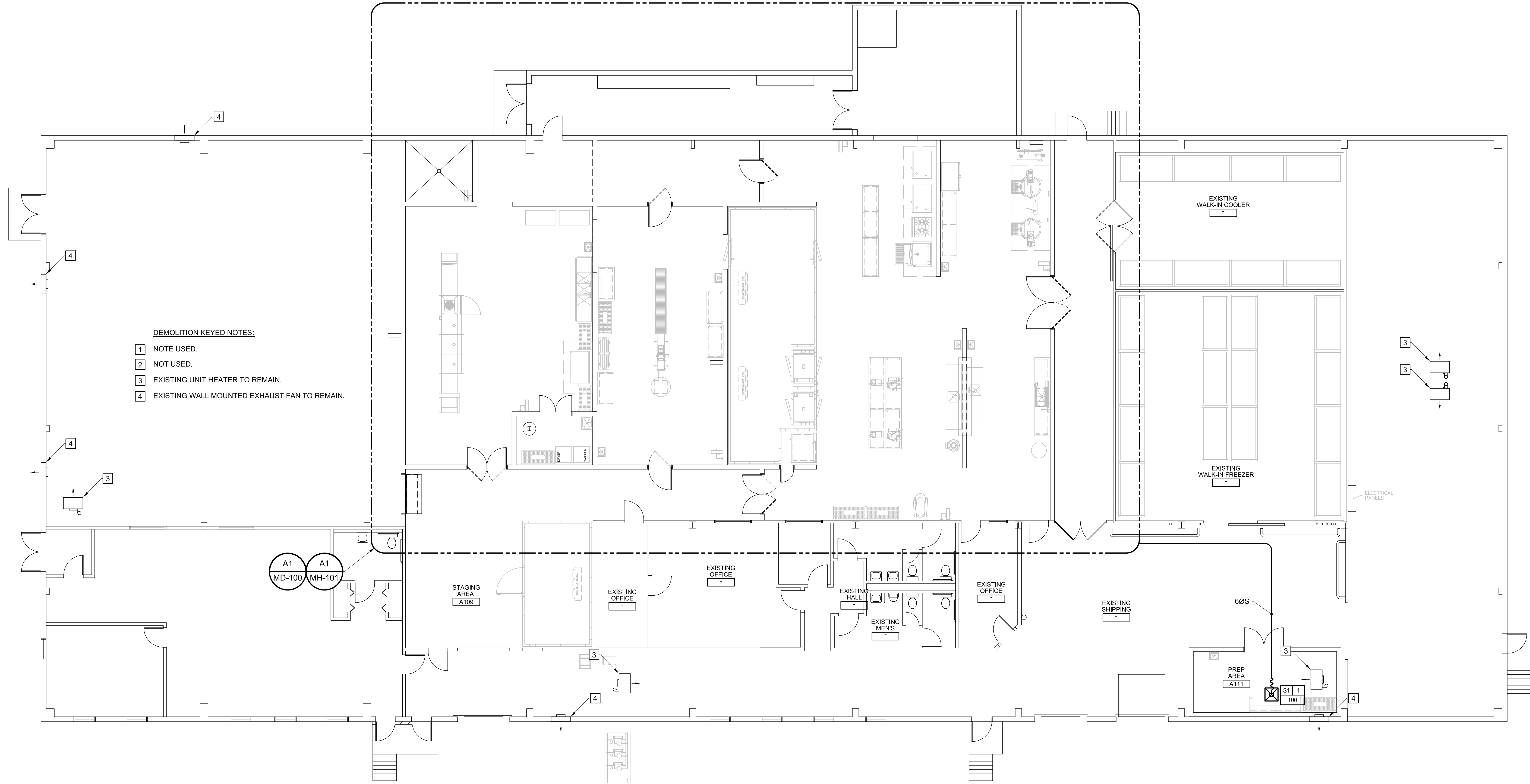


N:\Projects\2013\13001 - Portland Public Schools - Central Kitchen\2D Drawing Files\13001\A1.dwg Apr 19, 2013 3:58pm

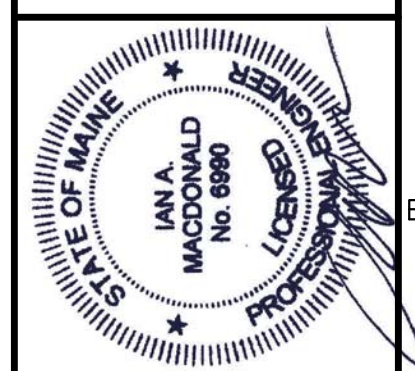


- DEMOLITION KEYED NOTES:**
- 1 NOTE USED.
 - 2 NOT USED.
 - 3 EXISTING UNIT HEATER TO REMAIN.
 - 4 EXISTING WALL MOUNTED EXHAUST FAN TO REMAIN.

A1 MD-100
A1 MH-101

160 Veranda Street
Portland, Maine 04103
T: 207.221.2260
F: 207.221.2266
Web: www.allied-eng.com

Allied Engineering
Structural Mechanical Electrical Commissioning



REVISIONS		DATE	BY	DESCRIPTION

Date: 03/20/2013
Drawn By: SCL
Checked By: IAM
Project Mgr: IAM
Project No: 13001
Cad File: 13001M
Graphic Scale: 0
Scale: 1"

MH-100

A1 MECHANICAL PLAN ~ OVER ALL
1/8" = 1'-0"

MECHANICAL ~ OVER ALL PLAN
CITY OF PORTLAND
PORTLAND PUBLIC SCHOOLS - CENTRAL KITCHEN
92 WALDRON WAY, PORTLAND, MAINE
© COPYRIGHT 2013 ALLIED ENGINEERING, INC.