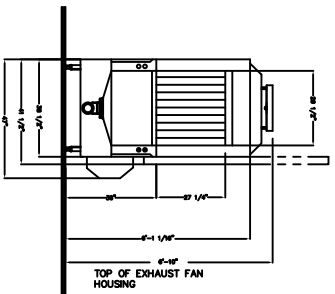
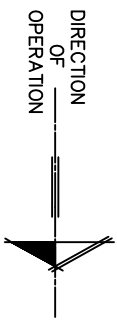
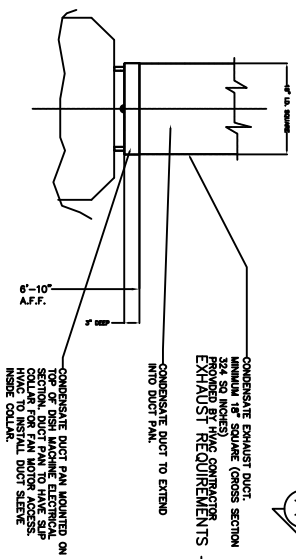
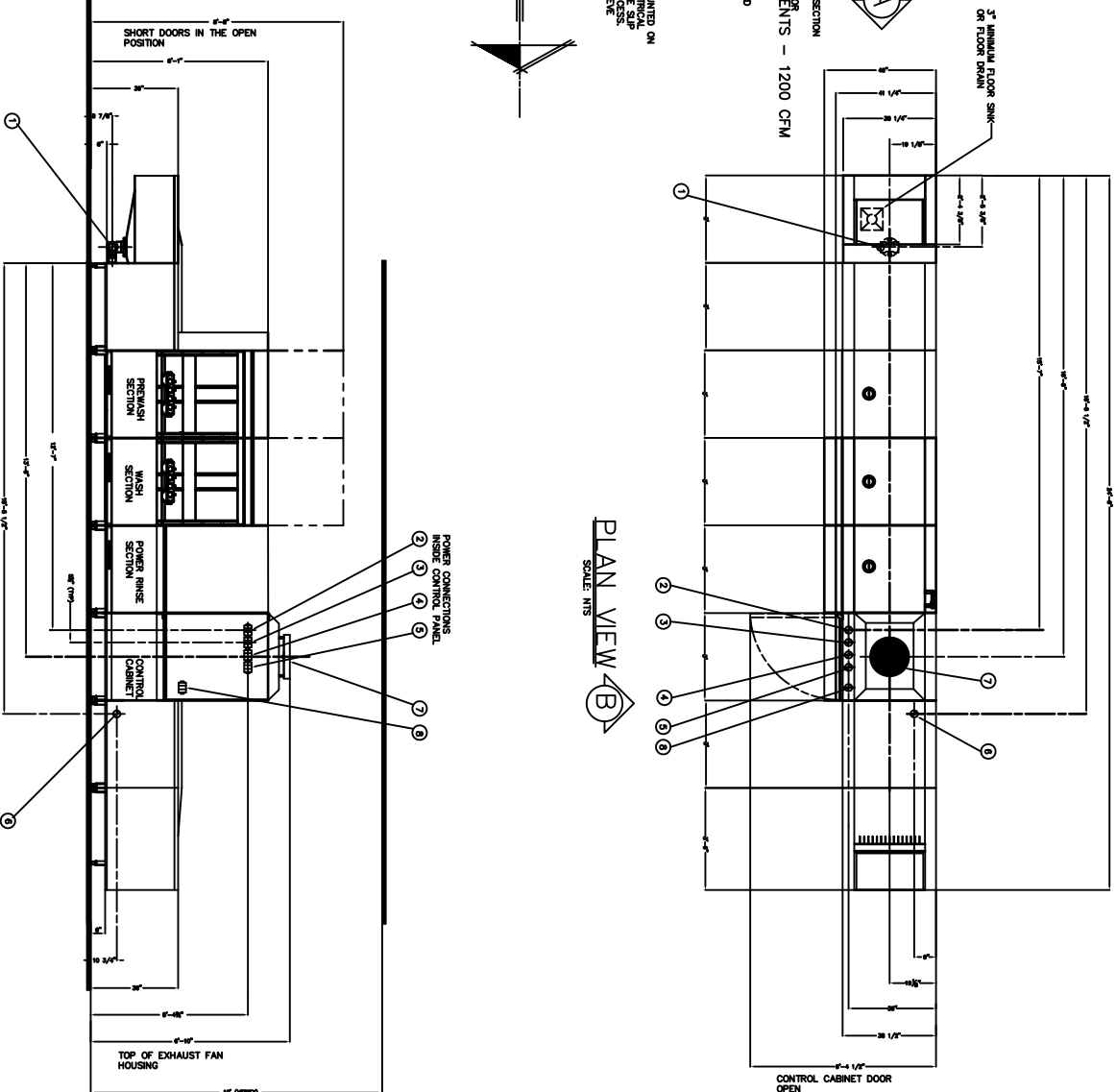




NOTE:
THE CONDENSATE REMOVAL SYSTEM BUILT INTO THE DISHWASHER CONSISTS OF A FAN THAT WILL REMOVE 1200 POUNDS OF CONDENSATE PER HOUR. THE CONDENSATE CONNECTION MUST BE AN INDIRECT CONNECTION THAT MUST BE CAPABLE OF REMOVING 1200 CFM FROM THE AREA.

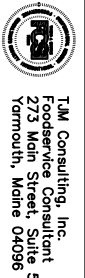


ELEVATION VIEW (A)
SCALE: NTS



ELEVATION VIEW (B)
SCALE: NTS

1	2" PVC SLP FIT DRAIN CONNECTION
ELECTRICAL CONNECTIONS @ 480 volts/60 cycles/3 phase	
2	1B-1 BOILER HEATER AND PUMP 43.3 AMPS
3	1B-2 WASH HEATER AND PUMP 33.0 AMPS 4 AMPS
4	1B-3 RINSE HEATER AND PUMP 33.0 AMPS 4 AMPS
5	1B-4 MOTOR CONTROLS & REC-WASH PUMP 5.2 AMPS
6	INCOMING WATER - 3/4" NPT SUPPLY LINE - 138.0 GALLONS TO FILL TANKS
7	WASTE AIR RATING VOLUME: 72,000 cu ft (1200 cfm) RELATIVE HUMIDITY: APPROX 65% PRESSURE: 20 PS
8	EXTERNAL CONTROL CONNECTIONS: VENT FAN CONNECTION: 120 VAC, 10" COMPACTS (TYPICAL) THERM DETECTOR & RINSE ALO FUSED SIGNAL CONNECTIONS FOR CHEMICAL DISPENSERS (FUSES BY OTHERS)
HEAT LOAD	
	HEAT LOAD - 8.0 Kw = 34.0 Btu/hr
	LATENT - 8.0 Kw = 22.0 Btu/hr
	TOTAL - 16.0 Kw = 56.0 Btu/hr



TJM Consulting, Inc.
Foodservice Consultant
273 Main Street, Suite 5
Yarmouth, Maine 04096

NOTICE:
THIS DRAWING AND ALL INFORMATION HEREIN ARE THE PROPERTY OF TJM CONSULTING, INC. AND MAY NOT BE USED OR COPIED, EITHER IN WHOLE OR IN PART, WITHOUT THE EXPRESS WRITTEN CONSENT OF THE DESIGNER.

REV NO.	REVISIONS	REV NO.	REVISIONS

PROJECT:
Portland Public Schools
Central Kitchen
92 Waldron Way
Portland, Maine

PROJECT:	DATE:
Portland Public Schools Central Kitchen	2-1-2013
DRAWN BY: T. McVade	CHECKED BY: T. McVade
SCALE: 1/2"=1'-0"	

SHEET TITLE:
Foodservice Equipment
Flight-Type Dishwasher Detail
FS-12

SHEET NO.