

- 1 EXISTING ELECTRICAL ITEMS IN THIS AREA SHALL REMAIN UNLESS NOTED OTHERWISE
- 2 PROVIDE AND WIRE TO 60A, 3P, 480V CIRCUIT BREAKER IN EXISTING MDP (50 KAIC). PROVIDE (4)#8,(1)#8G IN 1" C

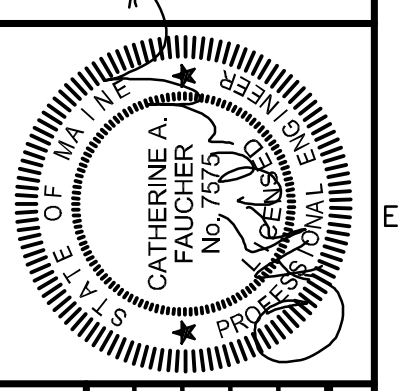
G9 KEY NOTES

1. REMOVE ALL ELECTRICAL ITEMS IN THE RENOVATED AREAS THAT ARE CURRENTLY UNUSED OR BECOME UNUSED AS A RESULT OF THIS RENOVATION. ALL WIRING SHALL BE REMOVED BACK TO SOURCE.

F9 DEMOLITION NOTES

160 Veranda Street
 Portland, Maine 04103
 T: 207.221.2260
 F: 207.221.2266
 Web: www.allied-eng.com

Allied Engineering
 Structural Mechanical Electrical Commissioning



REVISIONS		NUMBER	DATE	BY	DESCRIPTION

Date: 03/20/2013
 Drawn By: SCL
 Checked By: JAM
 Project Mgr: JAM
 Project No: 13001
 Code File: 13001.M.DWG
 Graphic Scale: 0 1"

ELECTRICAL ~ POWER AND SYSTEMS PLAN
 CITY OF PORTLAND
 PORTLAND PUBLIC SCHOOLS - CENTRAL KITCHEN
 92 WALDRON WAY, PORTLAND, MAINE
 © COPYRIGHT 2013 ALLIED ENGINEERING, INC.

E-102

A1 KITCHEN POWER AND SYSTEMS PLAN
 1/4" = 1'-0"

N:\Projects\2013\13001 - Portland Public Schools - Central Kitchen\00 Drawing Files\13001E.dwg Mar 20, 2013 - 8:26am