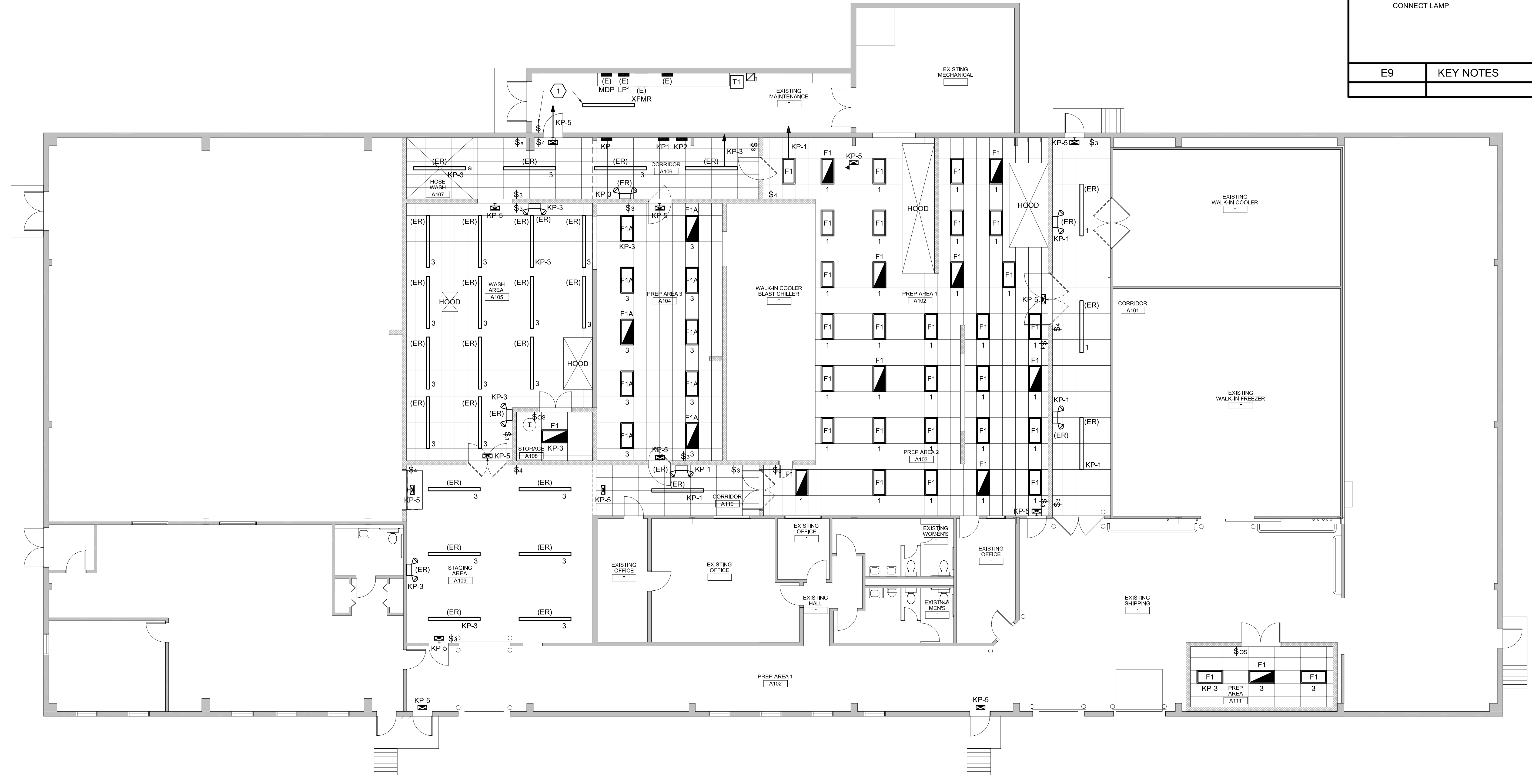


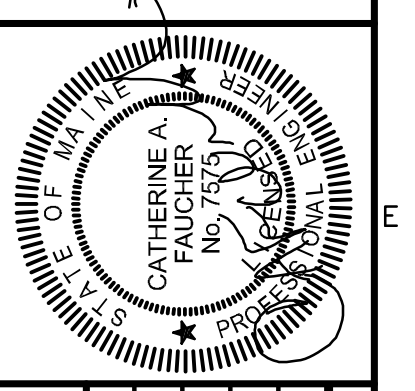
LUMINAIRE SCHEDULE									
TYPE	DESCRIPTION	MFR	CATALOG SERIES NUMBER SEE NOTE 1	MOUNTING	VOLTS	LAMP			KEY NOTES
						QTY PER FIXTURE	WATTS	TYPE	
F1	2x4 FOOD-PROCESSING AREA TROFFER	LITHONIA	2SRT-G-228T5-A12156V-GE10PS-L-G-FPA	RECESSED	277	2	28	T8 4100K	3
F1A	2x4 FOOD-PROCESSING AREA TROFFER	LITHONIA	2SRT-G-328T5-A12156V-GE10PS-L-G-FPA	RECESSED	277	3	28	T8 4100K	3
F3	4' WRAPAROUND FIXTURE	LITHONIA	CLM-228T5	PENDANT MOUNTED 10' AFF	277	2	28	T8 4100K	3
EXIT SIGN	SELF-POWERED EXIT SIGN	LITHONIA	LQM-S-W-3-R-ELN	NOTE 4	277V AC 12 V DC	-	6	LED	4
NOTES									
1 NOTE THAT THESE NUMBERS ARE NOT COMPLETE CATALOG #S. PROVIDE ALL REQUIREMENTS ON SCHEDULE, NOTES, SPECS, AND DRAWINGS COMBINED.									
2 CATALOG SERIES NUMBERS ARE USED TO ESTABLISH A LEVEL OF QUALITY AND NOT INTENDED TO LIMIT COMPETITION. SERIES NUMBERS ARE NOT COMPLETE CATALOG NUMBERS. COMPLY WITH ADDITIONAL REQUIREMENTS IN SPECIFICATIONS AND DRAWINGS.									
3 VERIFY CEILING STRUCTURE AND MOUNTING HEIGHT PRIOR TO ORDERING ANY LIGHT FIXTURES.									
4 PROVIDE WALL, CEILING, OR PENDANT MOUNTING AS INDICATED ON PLANS. PROVIDE NUMBER OF FACES AND ARROWS AS INDICATED.									

1. REMOVE ALL EXISTING LIGHTING IN ROOMS WHERE NEW LIGHTING IS INDICATED. EXISTING LIGHTING IN AREAS NOT BEING RENOVATED SHALL REMAIN.	
G9	NOTES
F9	DEMOLITION NOTES
1 REMOVE 1 LAMP FROM EXISTING FIXTURE FROM MOTION SENSOR, PROVIDE WALL SWITCH AND CONNECT LAMP	
E9	KEY NOTES



160 Veranda Street
Portland, Maine 04103
T: 207.221.2260
F: 207.221.2266
Web: www.allied-eng.com

Allied Engineering
Structural Mechanical Electrical Commissioning



DATE	NUMBER	DATE	BY	DESCRIPTION

ELECTRICAL ~ LIGHTING PLAN
CITY OF PORTLAND
PORTLAND PUBLIC SCHOOLS - CENTRAL KITCHEN
92 WALDRON WAY, PORTLAND, MAINE
© COPYRIGHT 2013 ALLIED ENGINEERING, INC.

E-101

A1 LIGHTING PLAN
1/8" = 1'-0"

N:\Projects\2013\13001 - Portland Public Schools - Central Kitchen\00 Drawing Files\13001E.dwg Mar 20, 2013 - 8:26am