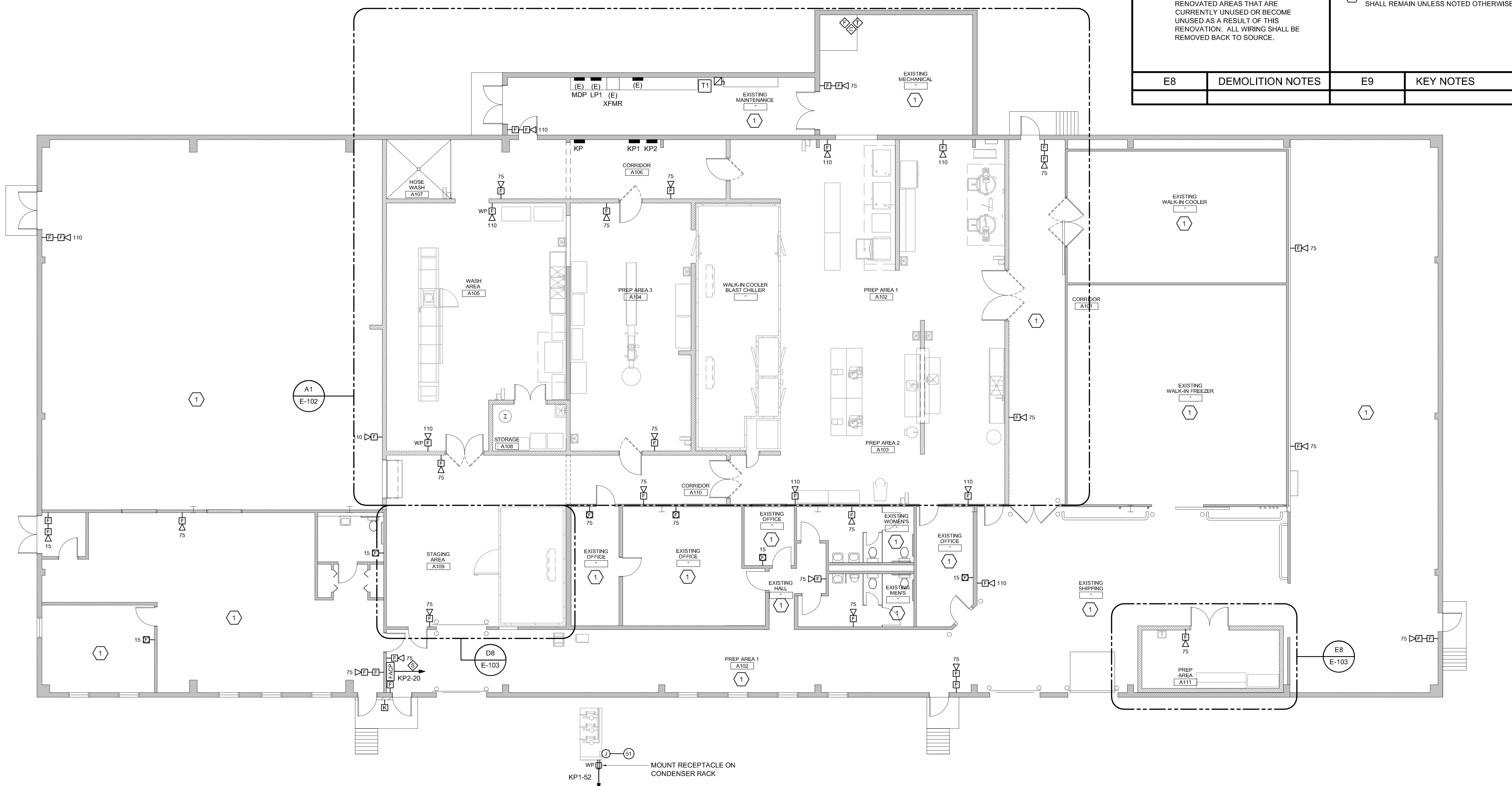


AFF ABOVE FINISHED FLOOR	TEL TELEPHONE	— ELECTRICAL PANEL	□ RECESSED LIGHT FIXTURE	[FACP] FIRE ALARM CONTROL PANEL	◇ SPRINKLER SYSTEM WATER FLOW SWITCH, PROVIDED UNDER DIVISION 23, WIRED UNDER DIVISION 26	⊕ GFCI DOUBLE DUPLEX RECEPTACLE, MOUNT 50" AFF UNO
AFG ABOVE FINISHED GRADE	UNO UNLESS NOTED OTHERWISE	← HOMERUN ~ (2#12+(1)#12G UNO (EXCEPT COMPUTER AND LIGHTING CIRCUITS: (1)#12+(1)#10N+(1)#12G UNO)	⊠ EXIT SIGN, SELF POWERED	[K] FIRE ALARM KNOX BOX	◇ SPRINKLER SYSTEM TAMPER SWITCH, PROVIDED UNDER DIVISION 23, WIRED UNDER DIVISION 26	⊕ WP GFCI RECEPTACLE WITH WEATHERPROOF COVER
BAS BUILDING AUTOMATION SYSTEM	WP WEATHERPROOF	← SINGLE-PHASE HOMERUN OR MULTIPLE HOMERUN UTILIZING THE SAME CONDUIT	▨ HATCHING OF LIGHT FIXTURE INDICATES FIXTURE WITH BATTERY BALLAST, TYPICAL	◇ SMOKE DETECTOR	◇ SPRINKLER SYSTEM CHECK VALVE PRESSURE SWITCH, FURNISHED AND INSTALLED UNDER DIVISION 23, WIRED UNDER DIVISION 26	⊕ WP GFCI RECEPTACLE IN WP ENCLOSURE ON ROOF
BKBD BACKBOARD	WG WIREGUARD	← 3-PHASE HOMERUN OR MULTIPLE HOMERUN UTILIZING THE SAME CONDUIT	⊠ EXIT SIGN, CEILING MOUNTED	◇ HEAT DETECTOR	◇ SPRINKLER SYSTEM EXCESS PRESSURE PUMP, FURNISHED AND INSTALLED UNDER DIVISION 23, WIRED UNDER DIVISION 26	⊕ OVERHEAD RECEPTACLE DROP, DUPLEX GFCI
CATV CABLE TV	XFMR TRANSFORMER	← (ER) EXISTING 8" LIGHT FIXTURE BEING REUSED	⊠ EXIT SIGN, WALL MOUNTED OVER DOOR	◇ REMOTE TEST INDICATOR FOR DUCT SMOKES, MOUNT ON CEILING BENEATH UNIT, OR WALL MOUNT WHERE INDICATED ON PLANS	⊕ MASTER BOX TRANSMITTER	⊕ SINGLE RECEPTACLE, NEMA 15-50R, 50A, 250V, MOUNT 50" AFF, PROVIDE (3)#8+(1)#10G BRANCH CIRCUIT
CB CIRCUIT BREAKER	(E) EXISTING ITEM TO REMAIN	⊕ EXISTING EMERGENCY LIGHTING BATTERY UNIT BEING REUSED	⊠ LIGHT SWITCH, 20A, 125/277V, 48" AFF, LETTER INDICATES SWITCHING, TYPICAL	[RTS] HORN/STROBE NOTIFICATION APPLIANCE, CANDELA AS NOTED ON PLANS	⊕ JUNCTION BOX	⊕ SINGLE RECEPTACLE, NEMA 14-30R, (3)#10+(1)#10G TO 30A, 2P CIRCUIT BREAKER
DN DOWN	(R) REMOVE ITEM AND DISPOSE OF PROPERLY		⊠ THREE-WAY LIGHT SWITCH	15 STROBE ONLY NOTIFICATION APPLIANCE, CANDELA AS NOTED ON PLANS	⊕ MOTOR	⊕ SINGLE OVERHEAD RECEPTACLE DROP, NEMA 15-50R, 50A, 3P, 250V, MOUNT 50" AFF, PROVIDE (3)#8+(1)#10G BRANCH CIRCUIT
FVE FURNISHED WITH EQUIPMENT	(ER) RELOCATED ITEM AT NEW LOCATION		⊠ FOUR-WAY LIGHT SWITCH	30 HORN/STROBE WITH PULL STATION DIRECTLY BELOW	⊕ DUPLICATION RECEPTACLE ~ 20A, 125V, 2P, 3W, NEMA 5-20R	⊕ FUSED DISCONNECT SWITCH
P/O PART OF	(RL) REMOVE AND RELOCATE		⊠ OCCUPANCY SENSOR SWITCH, WALL MOUNTED		⊕ DOUBLE DUPLEX RECEPTACLE	
MT MOUNT					⊕ GFCI DUPLEX RECEPTACLE, MOUNT 50" AFF UNO	
NEC NATIONAL ELECTRICAL CODE						
NF NON-FUSED						

F1 ELECTRICAL LEGEND

NO SCALE

1. REMOVE ALL ELECTRICAL ITEMS IN THE RENOVATED AREAS THAT ARE CURRENTLY UNUSED OR BECOME UNUSED AS A RESULT OF THIS RENOVATION. ALL WIRING SHALL BE REMOVED BACK TO SOURCE.		1 EXISTING ELECTRICAL ITEMS IN THIS AREA SHALL REMAIN UNLESS NOTED OTHERWISE	
E8	DEMOLITION NOTES	E9	KEY NOTES

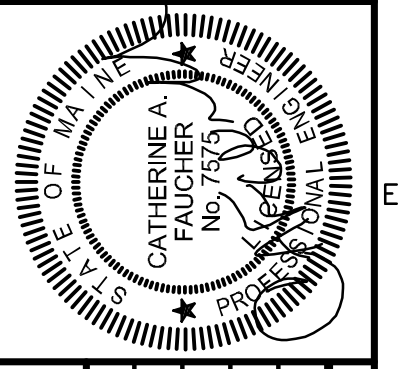


A1 FIRE ALARM PLAN

1/8" = 1'-0"

160 Veranda Street  
Portland, Maine 04103  
T: 207.221.2260  
F: 207.221.2266  
Web: www.allied-eng.com

**Allied Engineering**  
Structural Mechanical Electrical Commissioning



REVISIONS	NUMBER	DATE	BY	DESCRIPTION

Date: 03/20/2013	Drawn By:	Checked By:	Project Mgr: JAM	Project No: 13001	Code File:	Graphic Scale: 0 1"
------------------	-----------	-------------	------------------	-------------------	------------	---------------------

**ELECTRICAL ~ OVERALL BUILDING AND FIRE ALARM PLAN**  
CITY OF PORTLAND  
PORTLAND PUBLIC SCHOOLS - CENTRAL KITCHEN  
92 WALDRON WAY, PORTLAND, MAINE  
© COPYRIGHT 2013 ALLIED ENGINEERING, INC.

**E-100**

N:\Projects\2013\13001 - Portland Public Schools - Central Kitchen\00 Drawing Files\13001E.dwg Mar 20, 2013 - 8:28am