

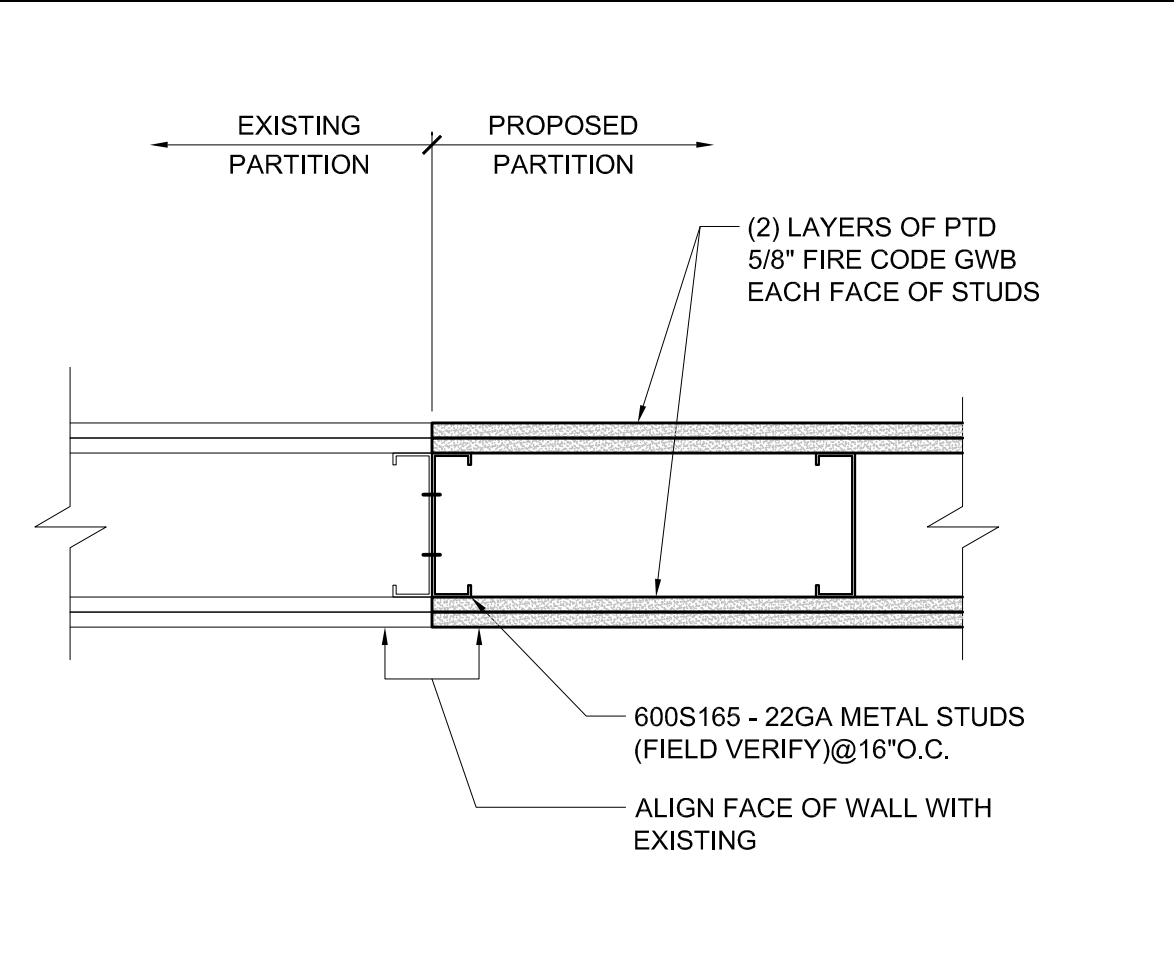
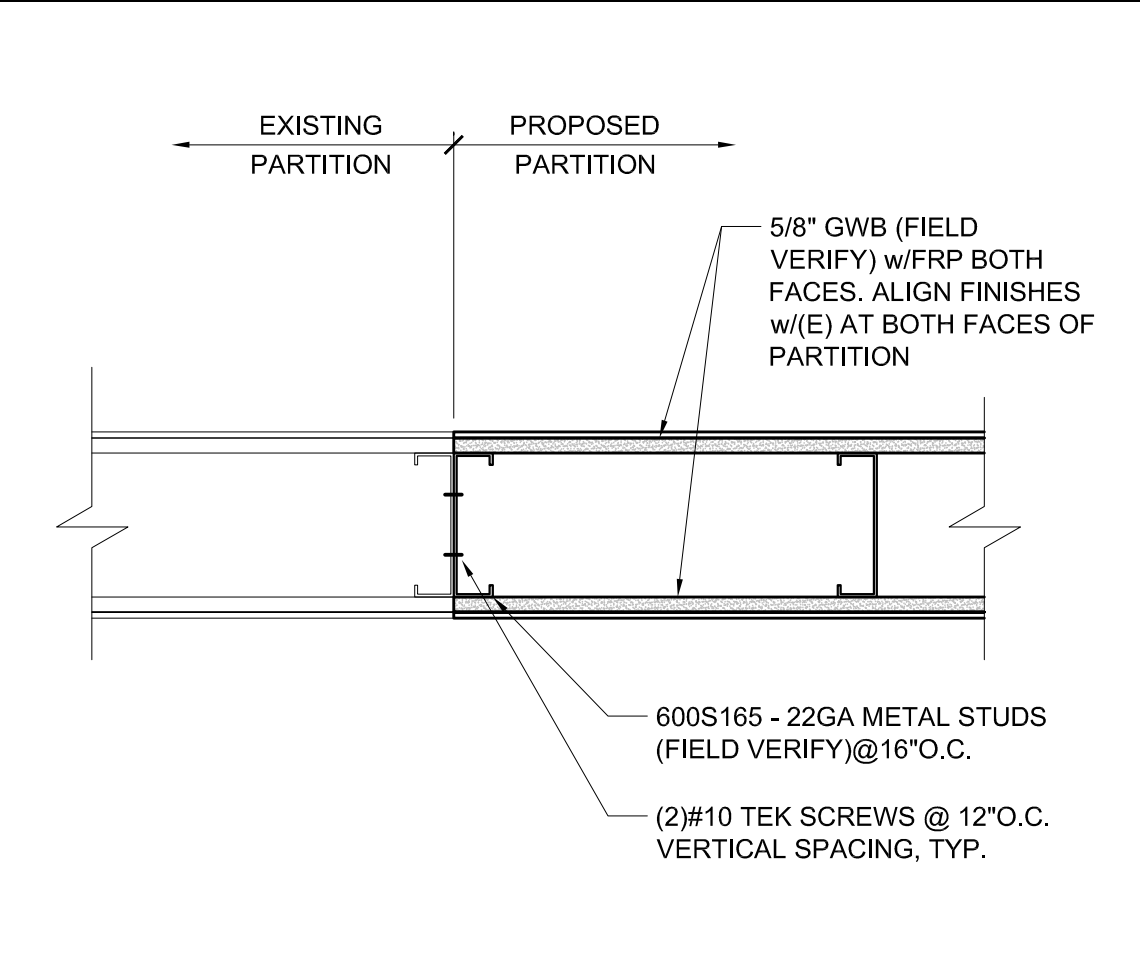
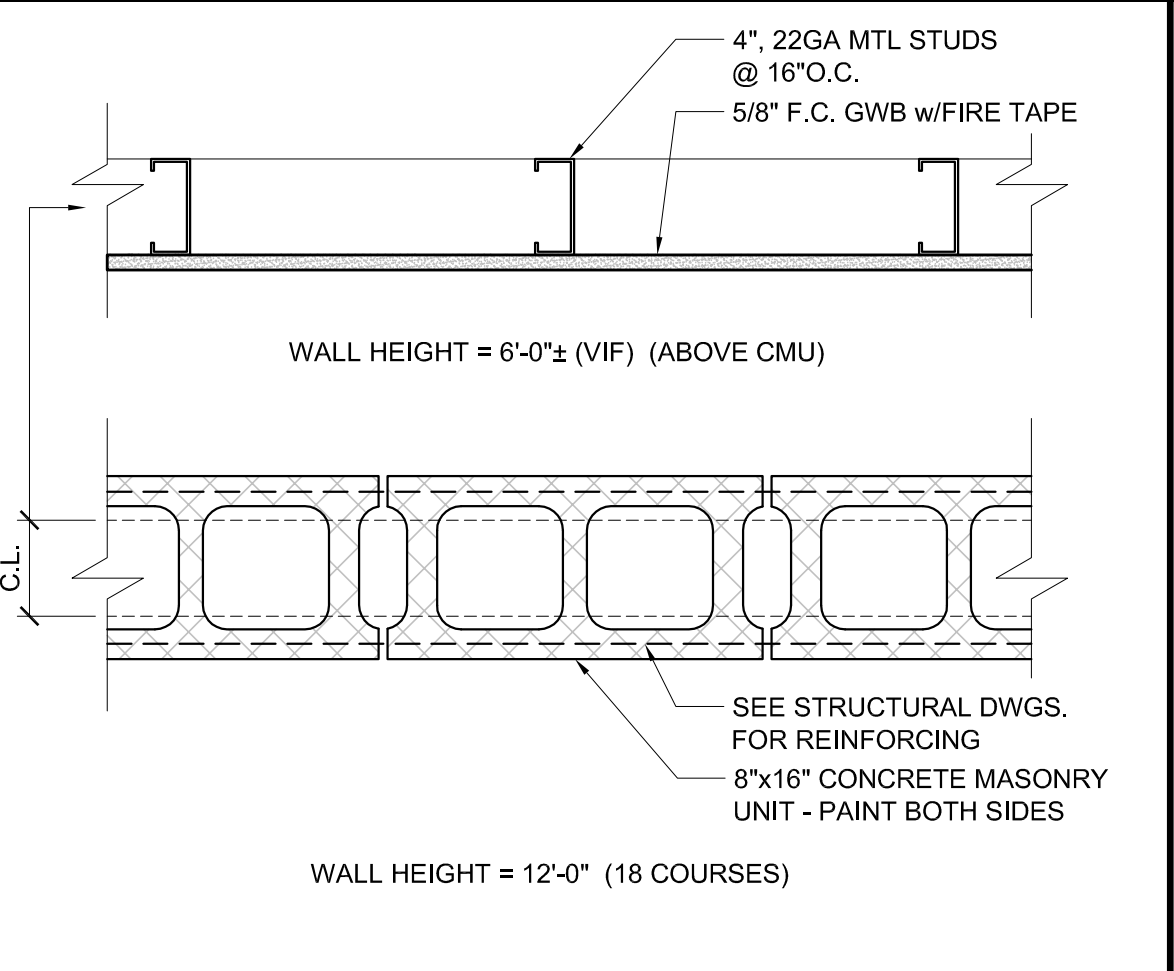
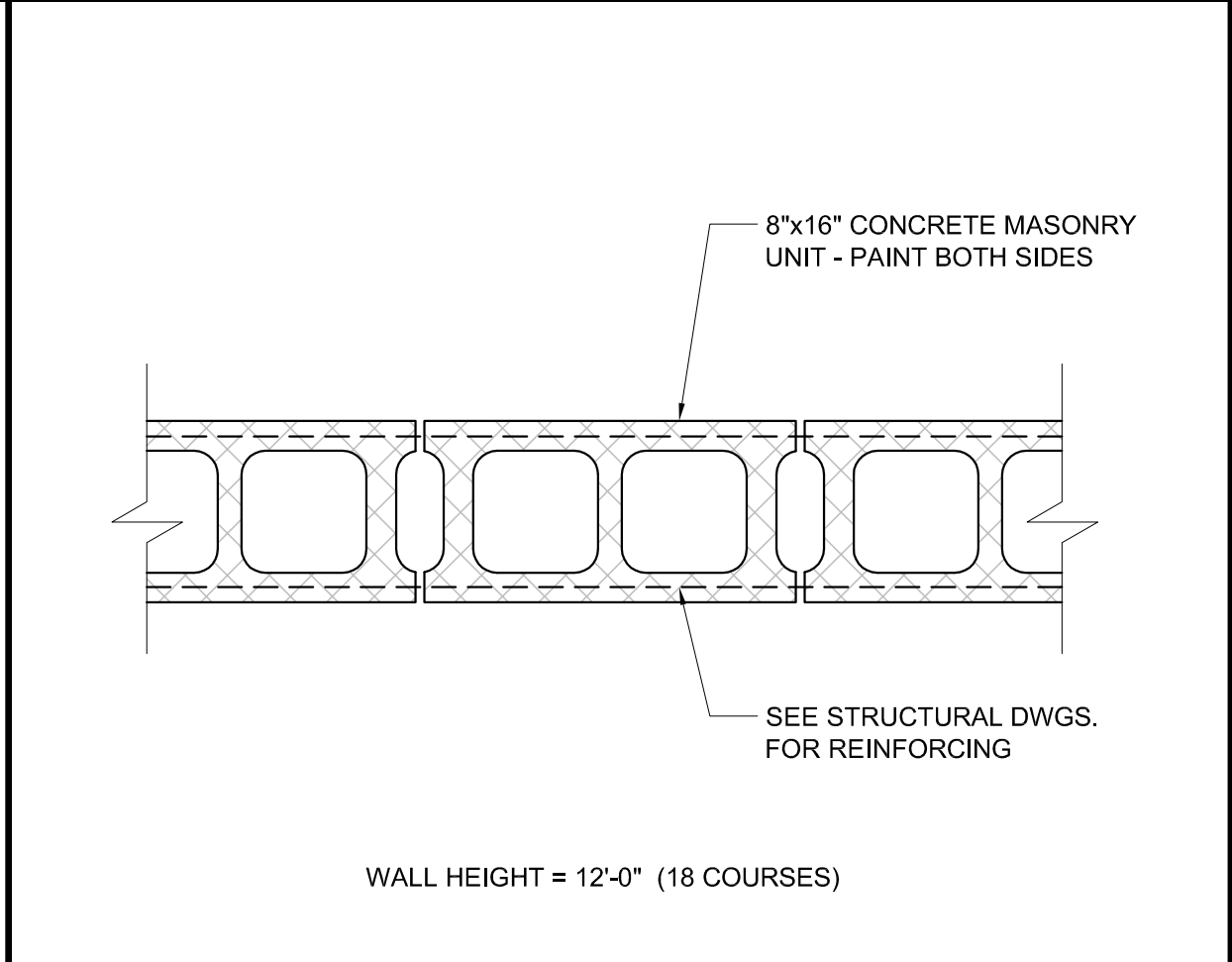
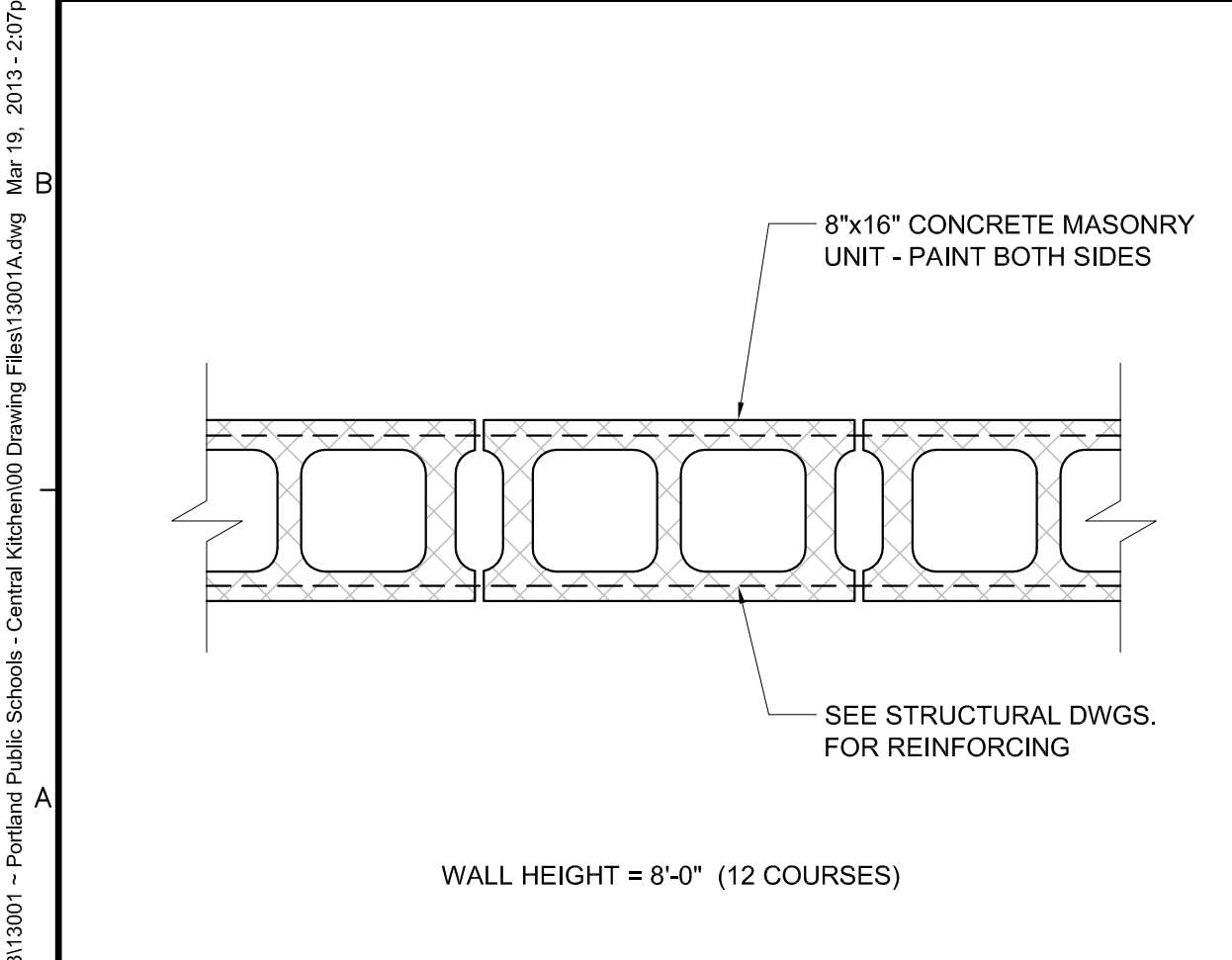
C1 SECTION DETAIL AT PARTITION TYPE-1
3/4" = 1'-0"

C3 SECTION DETAIL AT PARTITION TYPE-2
3/4" = 1'-0"

C5 SECTION DETAIL AT PARTITION TYPE-3
3/4" = 1'-0"

C7 SECTION DETAIL AT PARTITION TYPE-4
3/4" = 1'-0"

C9 SECTION DETAIL AT PARTITION TYPE-5 (FIRE RATED)
3/4" = 1'-0"



A1 PLAN DETAIL AT PARTITION TYPE-1
1 1/2" = 1'-0"

A3 PLAN DETAIL AT PARTITION TYPE-2
1 1/2" = 1'-0"

A5 PLAN DETAIL AT PARTITION TYPE-3
1 1/2" = 1'-0"

A7 PLAN DETAIL AT PARTITION TYPE-4
1 1/2" = 1'-0"

A9 PLAN DETAIL AT PARTITION TYPE-5 (FIRE RATED)
1 1/2" = 1'-0"

REVISIONS			
NUMBER	DATE	BY	DESCRIPTION

ARCHITECTURAL ~ WALL SECTIONS AND TYPES
CITY OF PORTLAND
PORTLAND PUBLIC SCHOOLS - CENTRAL KITCHEN
92 WALDRON WAY, PORTLAND, MAINE
© COPYRIGHT 2013 ALLIED ENGINEERING, INC.

N:\Projects\2013\13001 - Portland Public Schools - Central Kitchen\03 Drawing Files\13001A.dwg Mar 19, 2013 - 2:07pm