

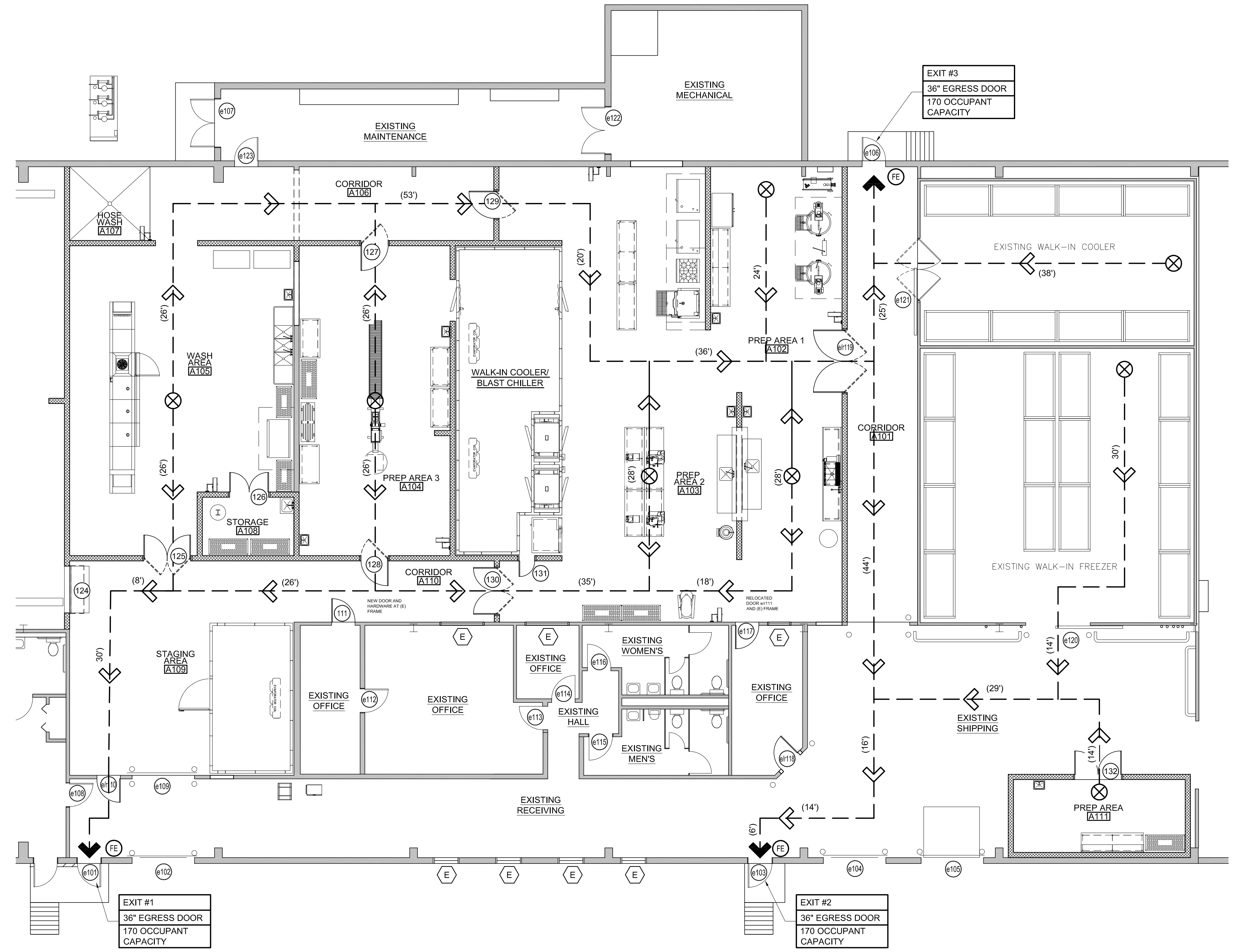
REVISIONS		NUMBER	DATE	BY	DESCRIPTION

Date: 03/20/2013	Drawn By: PED
Checked By: MIF	Project Mgr: IAM
Project No: 13001	Code File: 13001A.dwg
Graphic Scale: 0	Scale: 1"

ARCHITECTURAL ~
CODE COMPLIANCE PLAN
CITY OF PORTLAND
PORTLAND PUBLIC SCHOOLS - CENTRAL KITCHEN
92 WALDRON WAY, PORTLAND, MAINE
© COPYRIGHT 2013 ALLIED ENGINEERING, INC.

- LEGEND:**
- (FE) FIRE EXTINGUISHER
 - DIRECTION OF TRAVEL
 - ⬇ EXIT DOOR
 - ⊗ EGRESS TRAVEL DISTANCE

TOTAL OCCUPANT LOAD:
12,500 SF x 100 OCU/SF =
125 OCCUPANTS



CODE ANALYSIS
PORTLAND PUBLIC SCHOOLS CENTRAL KITCHEN
PORTLAND, MAINE

NFPA 101 Life Safety Code - 2012 Edition

Building Classification: Industrial - 12,500 SF Renovation
Building Total Floor Area = 20,250 SF Multiple Tenants
Hazard Classification: Ordinary Hazard
Construction Type: Type II (000)
Occupant Loads: 12,500 SF Industrial @ 100 sf/occupant = 125 occupants
Separation of Use Rating: 2 hour (1 Hour)
Janitor, Mech, Stor Rating: 1 hour

Building Uses Industrial

"(x)" denotes if building is fully sprinkled

Max. Allowable Travel Distance: 200' (250')
Max. Allowable Common Path: 50' (100')
Max. Dead End Corridor Length: 50'
Minimum Egress Corridor Width: 44"
Minimum Number of Required Exits: 2
Minimum Horz Egress Enclosure rating: 1 hr (none)
Minimum Separation of exits: 84' (56')
Minimum Egress Door Width: 36"

Exit Lighting: Required
Emergency Lighting: Required
Fire Alarm System: Required
Fire Sprinkler System: Required
Portable Fire Extinguishers: Required
Exit Devices/Panic Hardware: Required

2009 International Building Code
"(x)" denotes if building is fully sprinkled

Use Group Classification: Factory - Use Group F2
Construction: Type II - Non-Combustible, Unprotected
Occupant Loads: F2 @ 100 sf/occupant = 125 occupants

Area Use Separation Ratings: 2 hour (1 Hour)
Janitor, Mech & Storage Rooms: 1 hour

Building Limitations
Construction Type: IIB Unprotected
Maximum Height: 3 story / 30' (+1 story/20') @ F2
Maximum Area / Floor: 23,000 sf (Unlimited) @ F2
Actual Area/Height: 20,250 SF & 1 Story

Fire Resistance Ratings
Load Bearing Exterior Walls: None
Fire Separation of Uses: 2 Hours (1 hour)
Exit Corridors: 1 hour (none)
Minimum Number of Exits: 2 per occupancy
Maximum Dead End Corridor Length: 20'
Maximum Common Travel Path: 75' (100')
Maximum Travel Distance: 300' (400') @ F2
Minimum Corridor Width: 44"

Fire Alarm System: Required
Fire Sprinkler System: Required
Portable Fire Extinguishers: Required
Exit Lighting: Required
Emergency Lighting: Required

Building Live Loads
Corridors: 100 psf
Storage: 125 psf @ light; 250 psf @ heavy



A1 ARCHITECTURAL ~ CODE COMPLIANCE PLAN
1/8" = 1'-0"

A7 CODE COMPLIANCE PLAN NOTES

N:\Projects\2013\13001 - Portland Public Schools - Central Kitchen\03 Drawing Files\13001A.dwg Mar 19, 2013 - 2:04pm