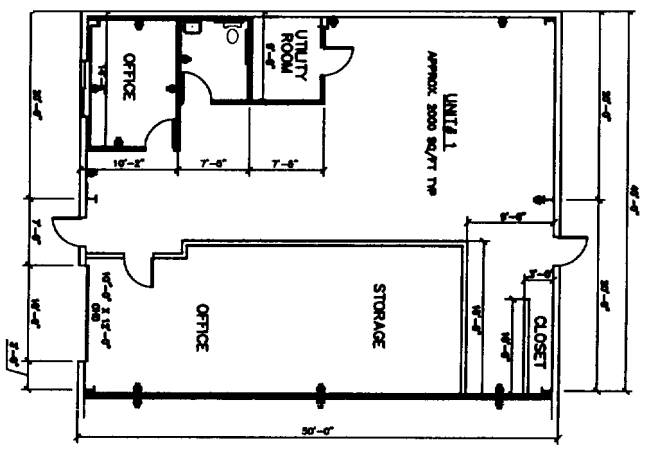
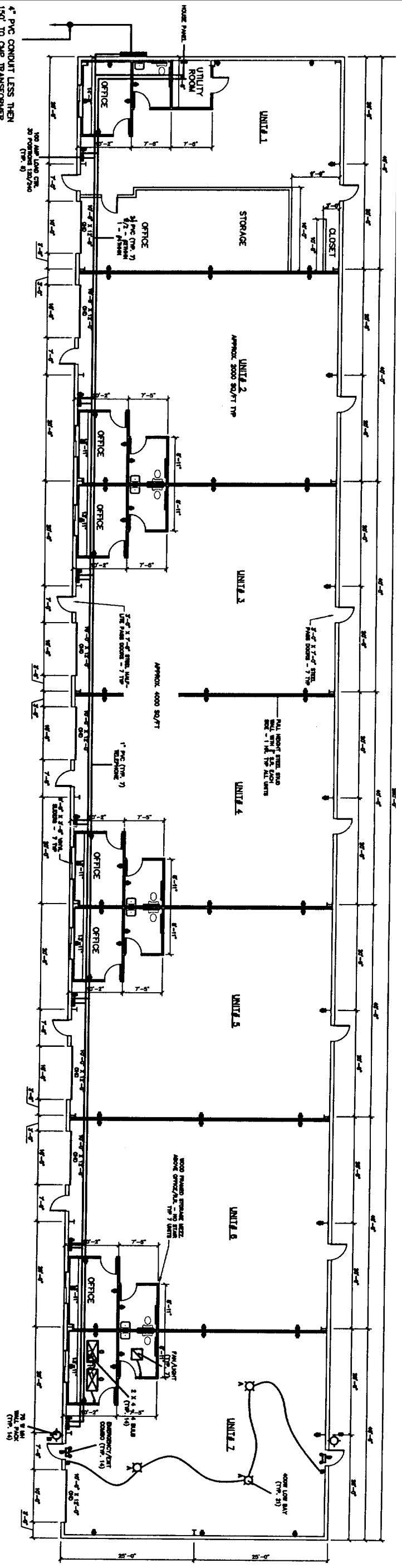


4" PVC CONDUIT LESS THEN
150' TO CAP TRANSFORMER
W/4 - 1/2 THHN
2 - 3 THHN



M.E. Bath & Kitchen

DEPT. OF PERMITS
CITY OF PORTLAND
NOV 19 2004

Floor Plan Six G's Business Park
Unit #1

at 565 Riverside St.
Portland, Maine
04103

DESIGNED	
DRAWN	DH
CHECKED	
SCALE	AS NOTED
DATE	11/17/04

SHEET

1 of 6

REVISIONS DATE