

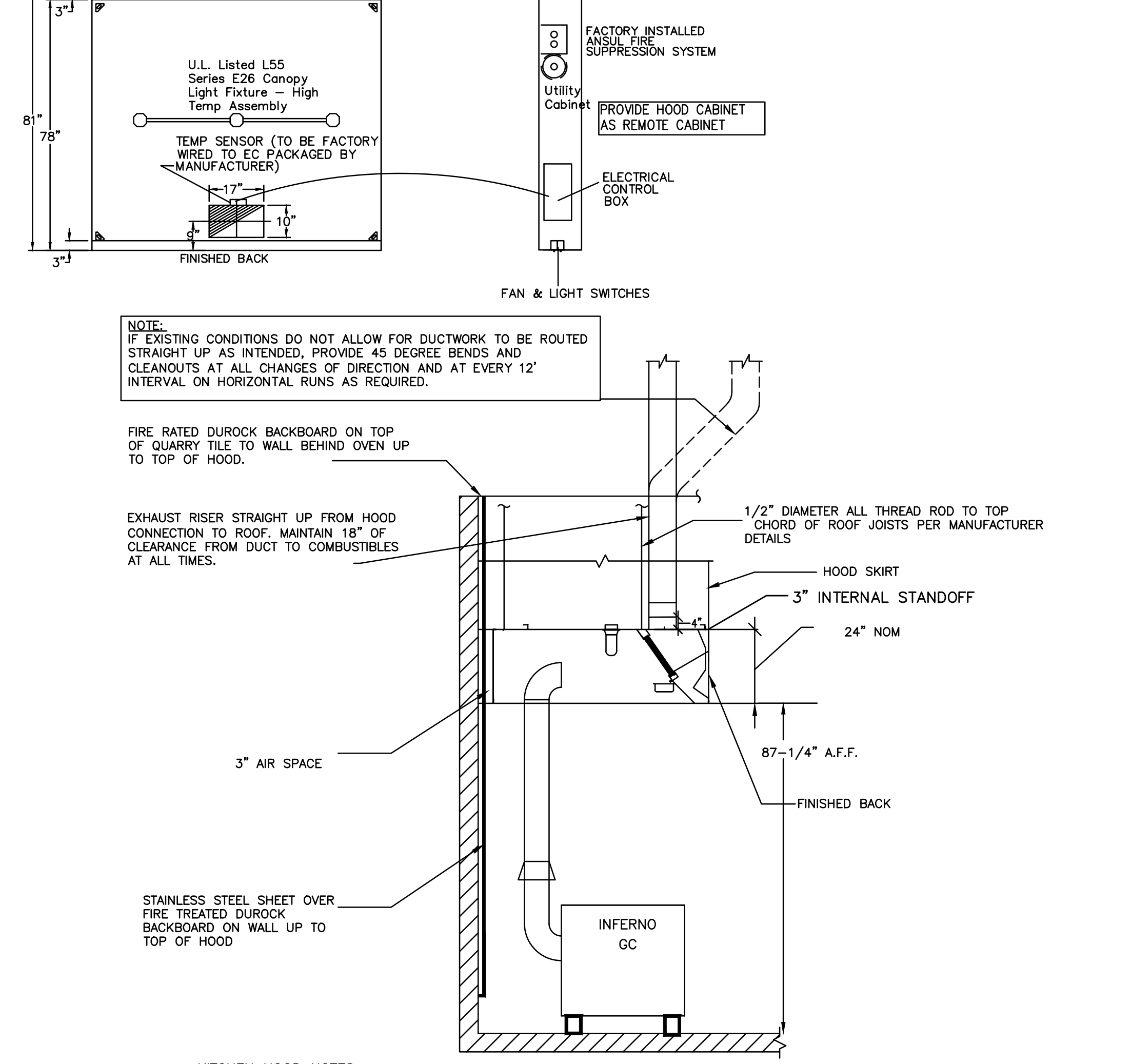
HVAC ELECTRICAL COORDINATION SCHEDULE (HECS)		CONTRACTOR TYPE		MOTOR CONTROL TYPE		CONTROL TYPE	
DC	LOCAL DISCONNECT	EC	ELECTRICAL CONTRACTOR	CS	COMBINATION STARTER	TC	TIMECLOCK
MC	MOTOR CONTROL (POWER)	FC	FIRE PROTECTION CONTRACTOR	MCC	MOTOR CONTROL CENTER	OCC	OCCUPANCY SENSOR
SD	SMOKE DETECTOR	GC	GENERAL CONTRACTOR	MG	MAGNETIC STARTER OR CONTACT	BAS	BUILDING AUTOMATION SYSTEM
CH	CONTROLS	HC	HVAC CONTRACTOR	MS	MANUAL STARTER	LV	LOW VOLTAGE CONTROLS
HP	HORSEPOWER	MFR	MANUFACTURER	VFD	VARIABLE FREQUENCY DRIVE	RL	LINE REVERSE ACTING LINE VOLTAGE STAT
BHP	BRAKE HORSEPOWER	PC	PLUMBING CONTRACTOR	MSR	MANUAL STARTER W/ RELAY	MAN	MANUAL
EX	EXISTING	OR	OWNER OR OTHERS			FA	FIRE ALARM
FLA	OPERATING FULL LOAD AMPS					SC	SMOKE CONTROL PANEL
MCA	MINIMUM CIRCUIT AMPACITY					INT	INTEGRAL TO EQUIPMENT
OC	OVER CURRENT PROTECTION					CO	CARBON MONOXIDE SENSOR
OP	CORD AND PLUG						

HVAC EXHAUST FAN SCHEDULE		LOCATION		STATUS		MFR		MODEL		VOLTS		PHASE		WEIGHT		EMERG		CFM		ESP (IN)		BHP		HP		MOTOR TYPE		WATTS		FAN RPM		ACCESS		FLA		OCP	
DF	FAN	SALES								120	1							1750	0.5	0.66	750							1650			2.9						
EF-1	EXHAUST FAN	CHICKEN DELI								208	3																										
H-1	KITCHEN HOOD	CHICKEN DELI								120	1																										

HVAC MISCELLANEOUS EQUIPMENT SCHEDULE		LOCATION		STATUS		MFR		MODEL		MIN EER		MIN COP		MIN EFF		VOLTS		PHASE		WEIGHT		EMERG		CFM		ESP (IN)									
H-1	KITCHEN HOOD									7824 ND-2						120	1																		

HOOD INFORMATION		FILTER(S)				LIGHT(S)				UTILITY CABINET(S)				FIRE HOOD			
HOOD NO.	TAG	TYPE	QTY	HEIGHT	LENGTH	EFFICIENCY @ 9 MICRONS	QTY	TYPE	WIRE GUARD	LOCATION	TYPE	SIZE	MODEL #	QUANTITY	SYSTEM HANGING	PIPING	WGHT
1	H-1 Rotis	SS Baffle with Handles	5	16"	18"	30%	2	L55 Series E26	YES	Location	Annu R102	1.5	SC-31010FP	1 Light 1 Fan	YES	695 LBS	

HOOD OPTIONS		OPTION	
HOOD NO.	TAG	FIELD WRAPPER	HEIGHT
1	H-1 Rotis	BACKSLASH	87.50" High X 96.00" Long
		FRONT STANDOFF	3" Wide 96" Long
		FINISHED BACK	GROUND/POLISH 84.00" Long
		MIN 18 GAUGE HOOD	



- KITCHEN HOOD NOTES:**
- EXHAUST: REFER TO HOOD SCHEDULE
 - PROVIDE U.L. LISTED, WET CHEMICAL ANSUL R-102 FIRE SUPPRESSION SYSTEM INCLUDING PREPWORK OF THE HOOD (SCHEDULE 40 BLACK IRON PIPE), COORDINATE FINAL SYSTEM HOOK-UP WITH ANSUL DISTRIBUTOR.
 - THE SYSTEM SHALL INCLUDE THE RELEASE ASSEMBLY, AGENT TANK, DETECTORS, FUSIBLE LINKS, LIQUID TIGHT FITTINGS AND REMOTE MANUAL PULL STATION.
 - PROVIDE ELECTRICAL SOLENOID TYPE GAS VALVE WITH MANUAL RESET RELAY TO ALLOW FUEL SHUTOFF.
 - HOOD SHALL EXTEND 6" BEYOND FRONT OF EQUIPMENT. RANGE HOOD EXHAUST DUCTWORK SHALL BE 16 GAUGE BLACK STEEL WITH CONTINUOUS EXTERNAL WELD. INSTALLATION SHALL BE IN ACCORDANCE WITH NFPA 96" VAPOR REMOVAL FOR COOKING EQUIPMENT INCLUDING CLEANOUT ACCESS PANELS, PROTECTION AND SPACING FROM COMBUSTIBLE MATERIALS, ETC. FIRE EXTINGUISHING SYSTEM FROM HOOD SHALL BE EXTENDED INTO THE DUCT SYSTEM.
 - RANGE HOOD EXHAUST DUCTWORK SHALL BE ENCLOSED WITH NON-COMBUSTIBLE, INORGANIC MINERAL FIBER BOARD SIMILAR TO SUPER FIRETEMP STRUCTURAL FIREPROOFING BOARD AS MANUFACTURED BY PABCO.
 - EXHAUST DUCTWORK FOR RANGE HOOD VENTILATION SYSTEMS SHALL BE COVERED WITH 3 INCH THICK FIRE PROOFING PANELS. FIRE PROOFING PANELS SHALL BE COMPOSED OF LIME, SILICA AND REINFORCING FIBERS AND SHALL HAVE A SANDED FINISH ON BOTH SIDES. PANELS SHALL BE JOHNS MANVILLE SUPER FIRETEMP M OR APPROVED EQUAL. INSTALLED SYSTEM SHALL BE COMPLETELY SEALED AND SHALL HAVE A FIRE RESISTANCE RATING OF 2 HOURS.
 - PROVIDE STAINLESS STEEL SHEET WITH BACKING, FULL HEIGHT AND WIDTH OF HOOD.
 - ALL HOOD EXHAUST DUCTS TO BE WELDED BLACK STEEL. ANY CHANGES IN DIRECTION TO BE 45DEG, SWEEPING ELBOWS, NO 90DEG, ELBOWS ALLOWED.

1 CHICKEN ROTISSERIE HOOD SECTION AND PLAN
NOT TO SCALE

CALCULATIONS UTILIZED

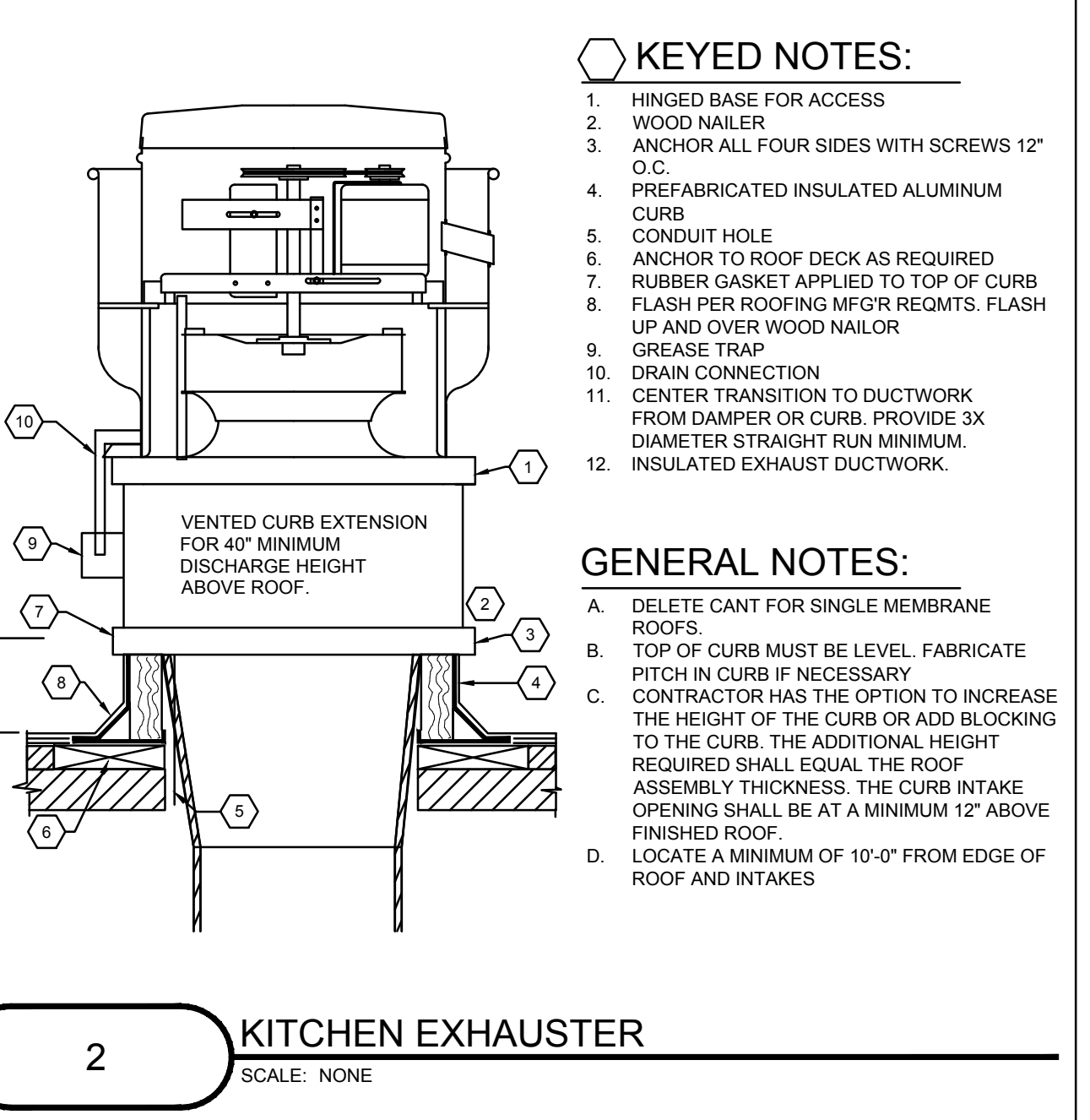
EXHAUST CFM=LENGTH OF HOOD X CFM/LIN.FT. (LOAD)

SUPPLY CFM=EXHAUST CFM X PERCENTAGE REQUIRED

TOTAL DUCT AREA=144 X CFM

DUCT LENGTH= TOTAL DUCT AREA / DUCT DEPTH

* CAPTIABLE VENTILATION DUCT SIZES ARE CALCULATED USING AN EXHAUST VELOCITY OF 1500-1800 FPM AND A SUPPLY VELOCITY OF 700 FPM. PLEASE CONSULT FACTORY FOR MAXIMUM ALLOWABLE DUCT SIZES.



2 KITCHEN EXHAUSTER
SCALE: NONE

NCAFA BELT DRIVE CENTRIFUGAL UP-BLAST EXHAUST FANS DIMENSIONAL DATA

FAN MODEL	HT	W	B	C	F	R	RO	WEIGHT LB
NCA14FA	30 1/2	33 3/4	2	24 3/4	23	14 7/8	21	124

OPTIONS: GREASE BOX HINGED FAN PITCHED CURB (CONTRACTOR TO VERIFY ROOF PITCH)

3 CHICKEN ROTISSERIE EXHAUST FAN DETAIL
NOT TO SCALE



4 DESTRATIFICATION FAN INSTALLATION
MOUNT TO JOIST AS HIGH AS POSSIBLE
NOT TO SCALE

AGI
ARCHITECTURAL GROUP INTERNATIONAL
15 West Seventh Street, Covington, KY 40002
P: 859-461-6400 F: 859-461-6590
www.agi-us.com
designing what you want to go.

BEK
KOHR'S LONNEMANN HEIL
ENGINEERS, PBC
MECHANICAL/ELECTRICAL ENGINEERS
1538 ALEXANDRIA PIKE, STE. 11
FT. THOMAS, KENTUCKY 41075
859-442-8050
859-442-8058 FAX

Revisions

#	Date	Title
03/10/16	OWNER REVIEW	
03/10/16	FERTI/BD	

STATE OF KENTUCKY
ROBERT A. LONNEMANN
10570
REGISTERED PROFESSIONAL ENGINEER
MAR 2 2 2016

Client: **BJS WHOLESALE CLUB**

BJS WHOLESALE CLUB
#029
PORTLAND, ME

DATE: 03/21/2016 PROJECT NO. 17819

SHEET TITLE: HVAC DETAILS & SCHEDULES

SHEET NUMBER: M201