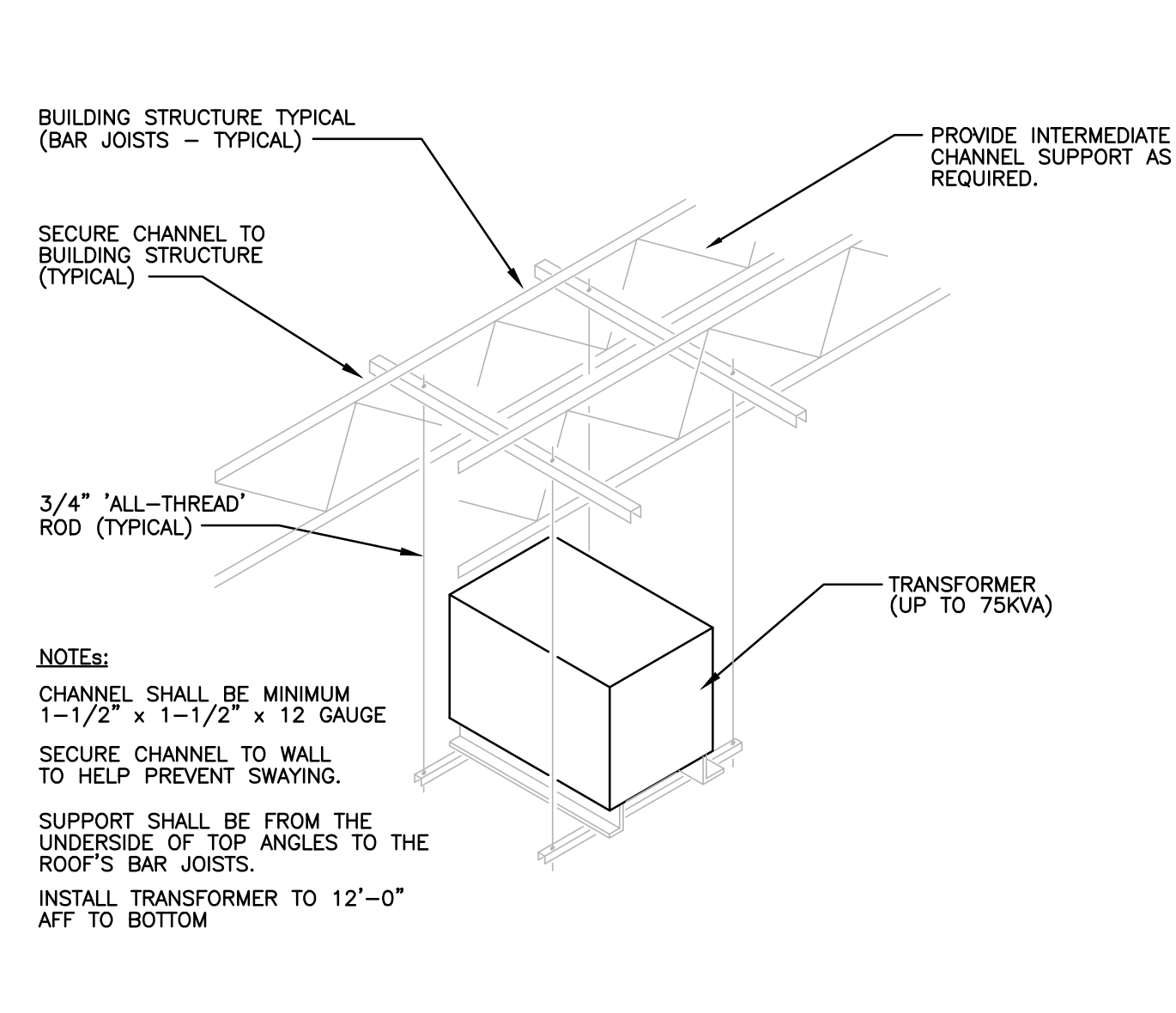


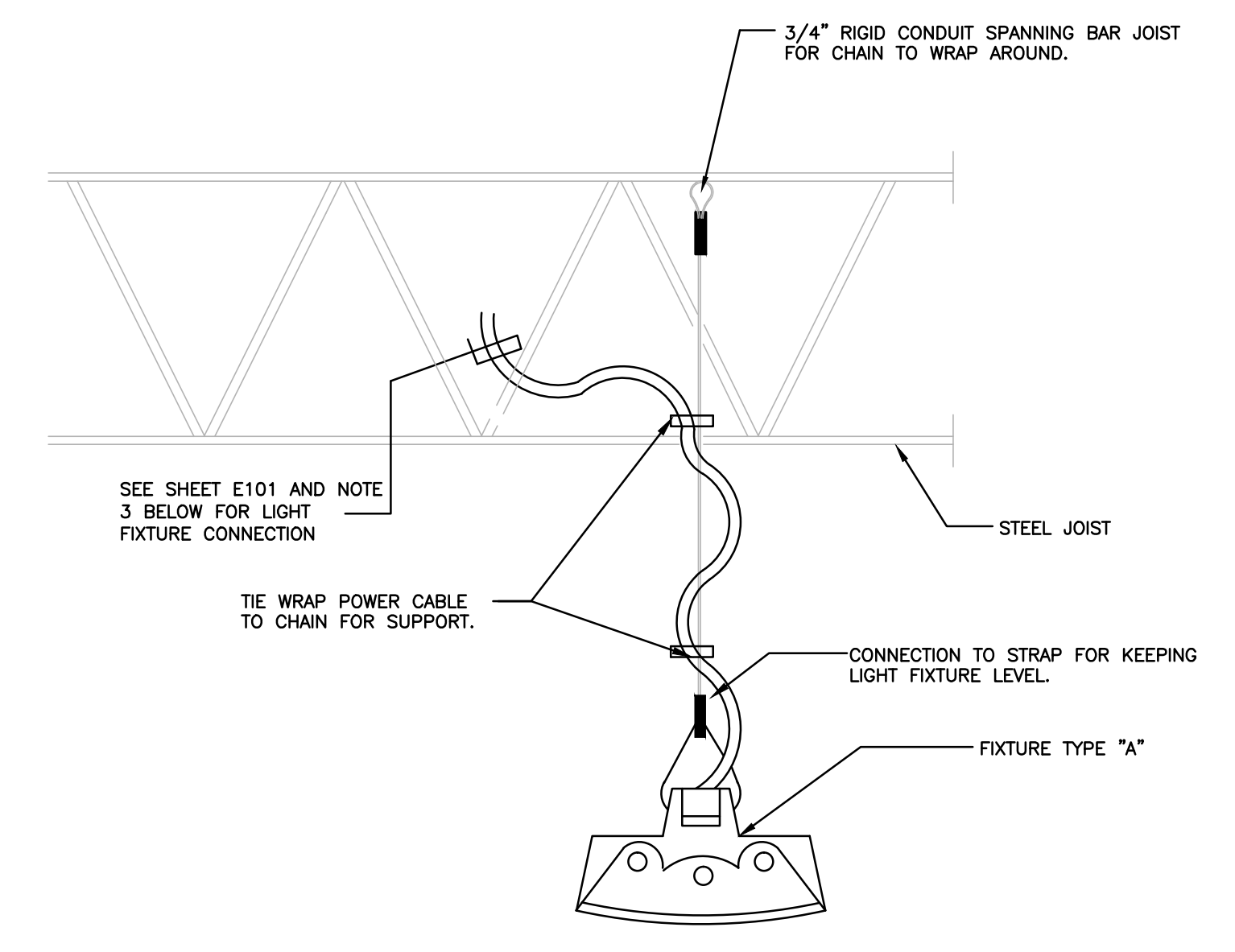
**4** DETAIL - CONDUIT INSTALL FOR COOLERS/FREEZERS  
NOT TO SCALE

- NOTES:**
- NO ELECTRICAL CONDUIT SHALL BE INSTALLED ON THE INTERIOR OF ANY PREP ROOM, COOLER, OR FREEZER.
  - ALL CONDUITS TO STAB THRU PREFABRICATED INSULATED PANEL TO COVERED IN-USE WEATHERPROOF RECEPTACLE WITHIN.
  - LIGHTING ELECTRICAL FEED THRU TOP CONNECTION OF END FIXTURE THEN THRU END CONNECTION POINT OF THE REMAINING LIGHT FIXTURES IN CONTINUOUS ROW. REPEAT AS REQUIRED BY EACH ADDITIONAL LIGHT FIXTURE OR LIGHT FIXTURE ROW.
  - SEAL AROUND ALL RECEPTACLES AND ALL ELECTRICAL PENETRATIONS THRU INSULATED PANELS WITH UL-LISTED SEALING COMPOUND. FOR CONCEALED RACEWAYS, INSTALL EACH FITTING IN A FLUSH STEEL BOX WITH A BLANK COVER PLATE HAVING A FINISH SIMILAR TO THAT OF ADJACENT PLATES OR SURFACES. INSTALL RACEWAY SEALING FITTINGS AT THE FOLLOWING POINTS:
    - WHERE CONDUITS PASS FROM WARM TO COLD LOCATIONS (ALL COOLERS AND FREEZERS).
    - PROVIDE 12" OF SPLIT TYPE RIGID FOAM INSULATION ON THE WARM SIDE.
  - PROVIDE LIQUID TIGHT FLEXIBLE METAL CONDUIT (LMFC) WITH PVC JACKET GASKET ASSEMBLY AND "SEALTITE" FLEXIBLE CONDUIT FOR FLEXIBLE CONNECTIONS SUBJECT TO WEATHER OR WATER.
  - UNLESS REQUIRED FOR FREEZER ITSELF, NO CONDUITS/RACEWAYS SHALL BE ROUTED INSIDE FREEZERS.
  - SEAL INSIDE OF CONDUITS PASSING THROUGH INSULATED PANELS WITH A UL-LISTED SEALING COMPOUND.



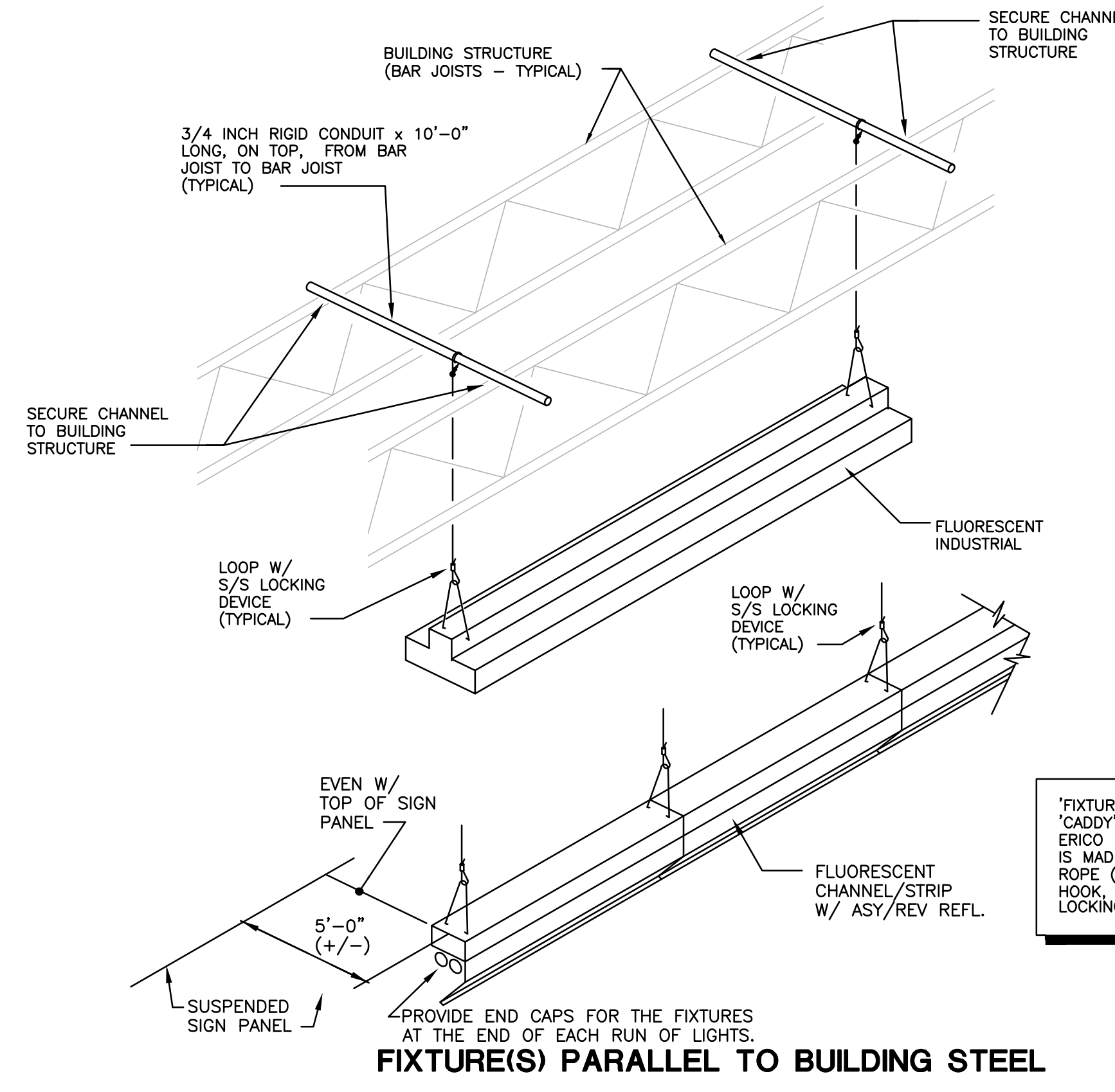
**2** DETAIL - TRANSFORMER SUPPORT  
NOT TO SCALE

- NOTES:**
- CHANNEL SHALL BE MINIMUM 1-1/2" x 1-1/2" x 12 GAUGE
  - SECURE CHANNEL TO WALL TO HELP PREVENT SWAYING.
  - SUPPORT SHALL BE FROM THE UNDERSIDE OF TOP ANGLES TO THE ROOF'S BAR JOISTS.
  - INSTALL TRANSFORMER TO 12'-0" AFT TO BOTTOM



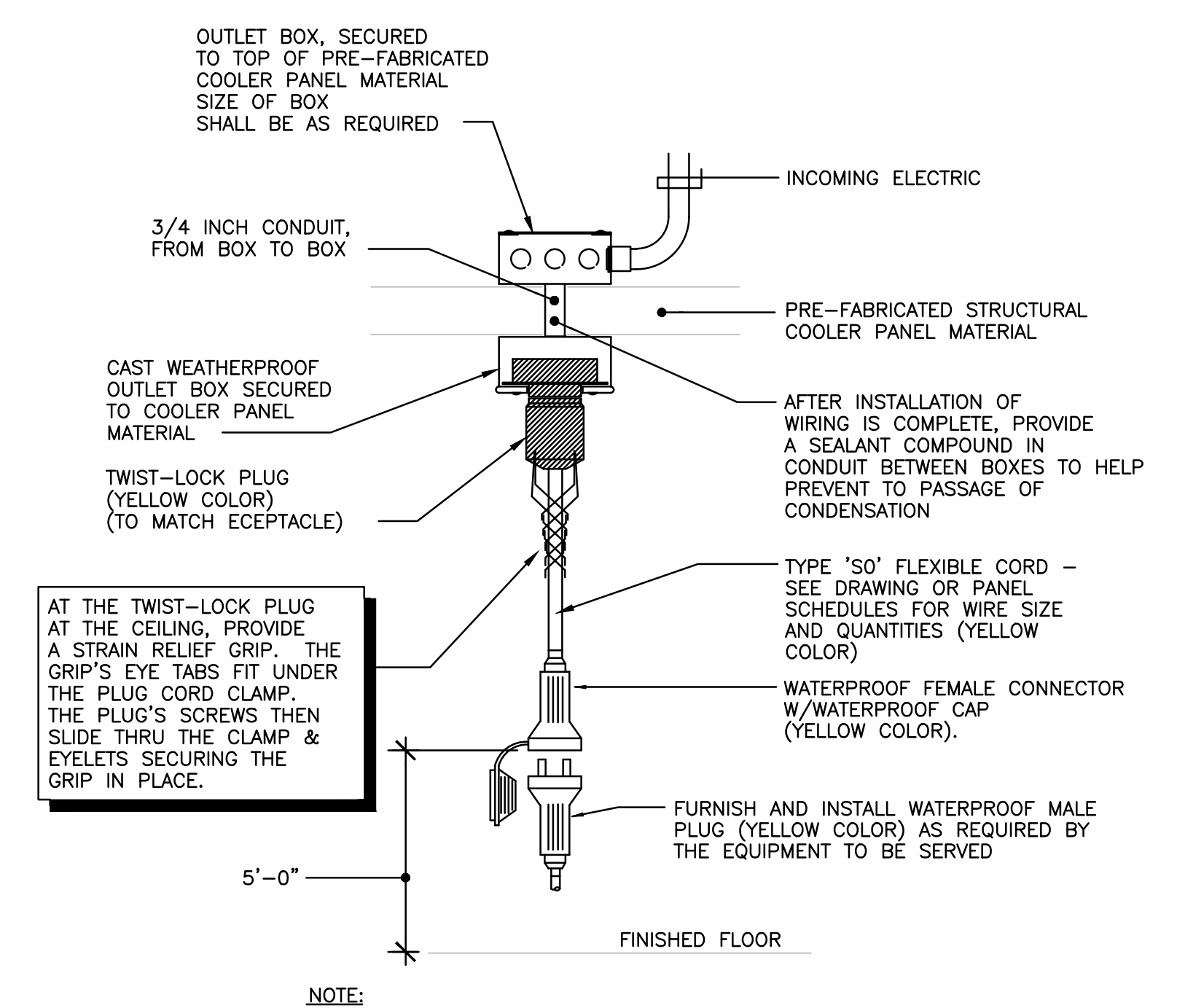
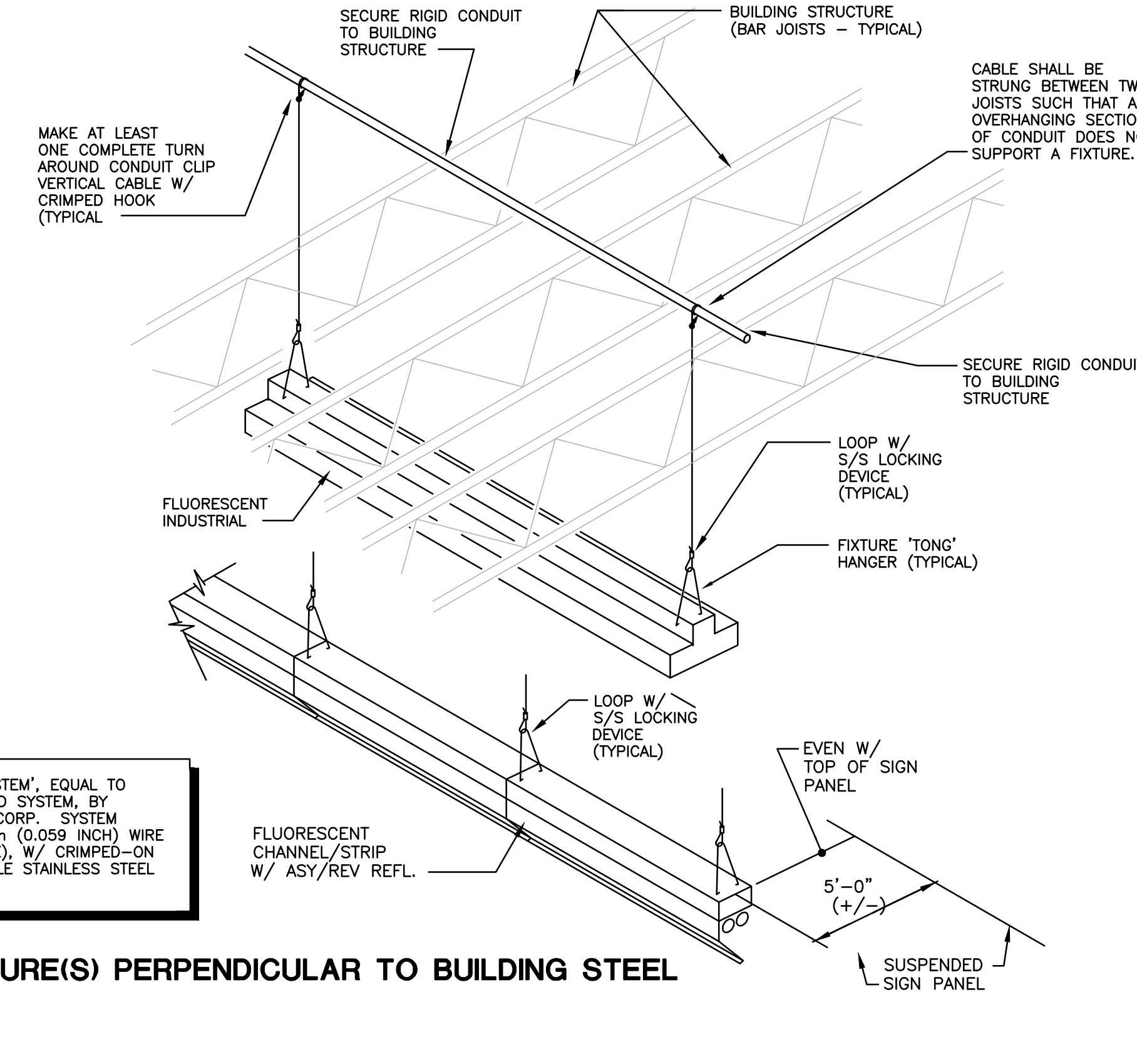
**3** DETAIL FOR HANGING TYPE 'A' LIGHT FIXTURE  
NOT TO SCALE

- NOTES:**
- ATTACH CABLE TO BAR JOIST WHERE BAR JOIST MATCHES LIGHT FIXTURE LOCATION. PROVIDE 3/4" RIGID CONDUIT SPANNING 2 BAR JOIST FOR SUPPORT OF LIGHT FIXTURE WHERE NEEDED TO KEEP LIGHT FIXTURES CORRECTED SPACED. END OF CONDUIT TO BE SUPPORTED BY JOIST.
  - CONFIRM MOUNTING HEIGHT WITH BU'S PROJECT MANAGER PRIOR TO START OF INSTALLATION.
  - ELECTRICAL CONTRACTOR TO FIELD VERIFY EXISTING WIRING METHOD IN FIELD AND UTILIZE EXISTING WIRING METHOD. SEE SHEET E101 FOR MORE DETAIL. ELECTRICAL CONTRACTOR TO REUSE WIRING METHOD WHERE EVER POSSIBLE AND SUPPLEMENT SYSTEM WHERE REQUIRED.
  - CONTRACTOR SHALL VERIFY WITH AUTHORITY HAVING JURISDICTION THAT RIGID CONDUIT (NOT FOR USE AS A WIREWAY) IS ACCEPTABLE FOR SUPPORT OF LIGHTING FIXTURES. IF NOT, CONTRACTOR SHALL PROVIDE ALTERNATE, ACCEPTABLE MEANS OF SUSPENDING THE FIXTURES AT NO ADDITIONAL COST TO THE OWNER.

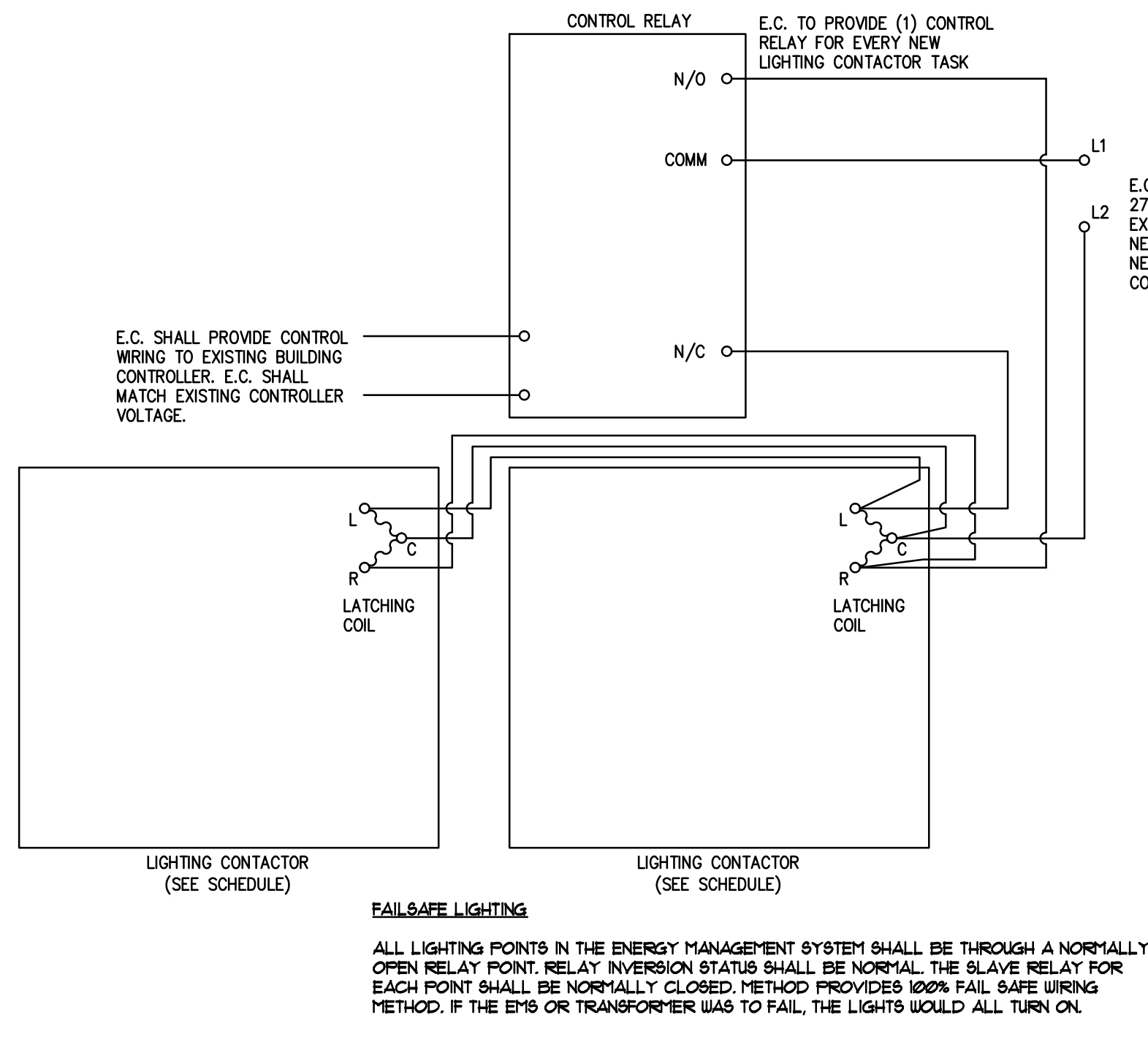


**9** DETAILS - FLUORESCENT FIXTURE SUPPORT  
SCALE: NOT TO SCALE

- NOTES:**
- CONTRACTOR SHALL VERIFY WITH AUTHORITY HAVING JURISDICTION THAT RIGID CONDUIT (NOT FOR USE AS A WIREWAY) IS ACCEPTABLE FOR SUPPORT OF LIGHTING FIXTURES. IF NOT, CONTRACTOR SHALL PROVIDE ALTERNATE, ACCEPTABLE MEANS OF SUSPENDING THE FIXTURES AT NO ADDITIONAL COST TO THE OWNER.
  - ELECTRICAL CONTRACTOR SHALL INSTALL OWNER FURNISHED CABLE AND LOCKING DEVICE FOR ALL A/A1 LIGHT FIXTURES PER THIS DETAIL. ELECTRICAL CONTRACTOR SHALL PROVIDE ALL OTHER LIGHT FIXTURE SUPPORTING MEANS TO STRUCTURE PER THIS DETAIL.
  - SEE LIGHT FIXTURE SCHEDULE ON SHEET E801 FOR LIGHT FIXTURE RESPONSIBILITIES.

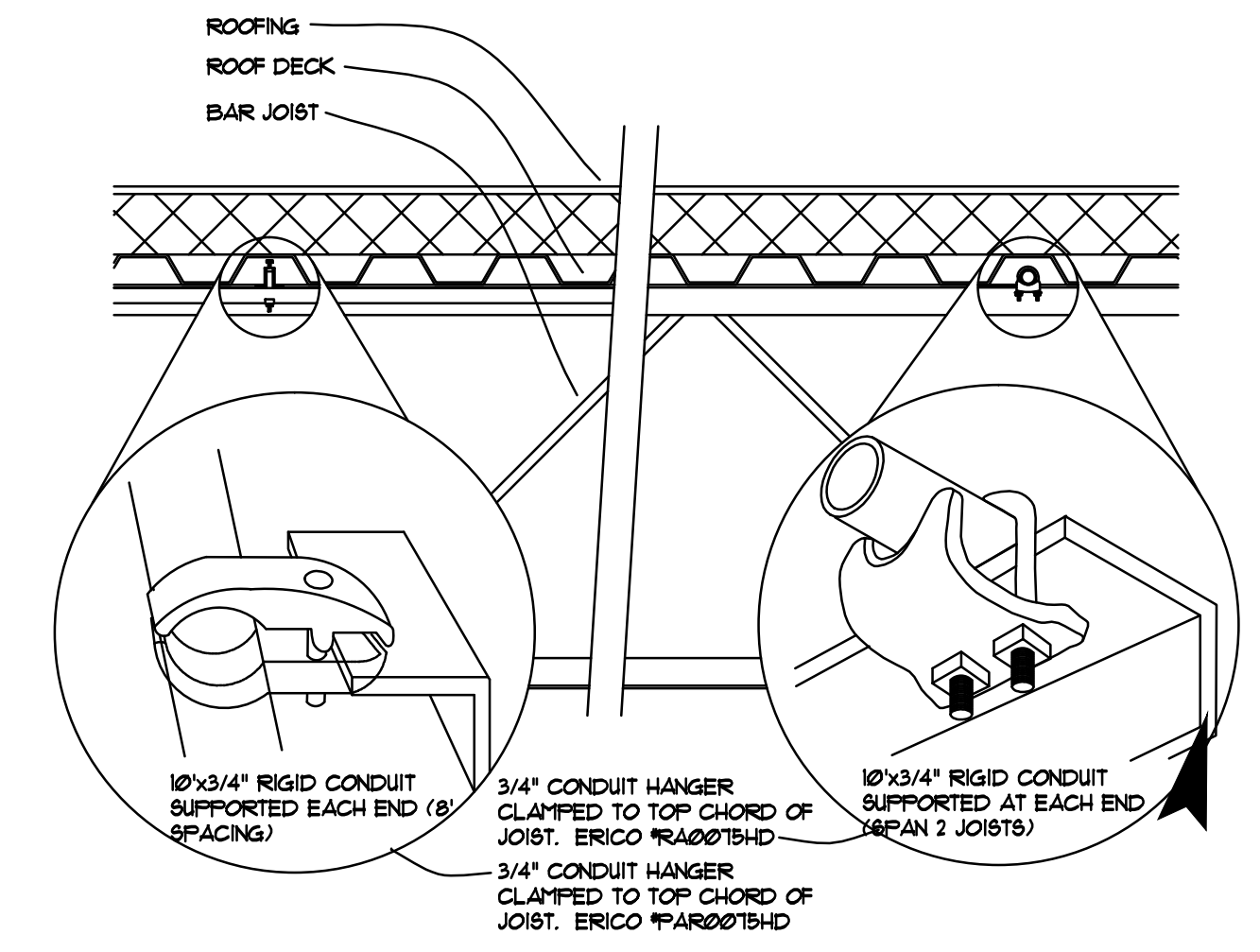


**7** DETAIL OVERHEAD ELECTRICAL DROP ASSEMBLY FOR MEAT DEPARTMENT  
SCALE: NOT TO SCALE



**1** DETAIL - LIGHTING CONTACTOR WIRING DIAGRAM  
NOT TO SCALE

- NOTE:** ELECTRICAL CONTRACTOR SHALL PROVIDE FULL LIGHTING CONTROL SYSTEM TO INCLUDE ENCLOSURE, CONTACTOR(S), AND RELAY(S) AS OUTLINED IN DETAIL AND IN LIGHTING CONTACTOR SCHEDULES ON SHEET E801.



**10** DETAIL - EMT LIGHT FIXTURE SUPPORT  
NOT TO SCALE

- NOTE:** CONTRACTOR SHALL VERIFY WITH AUTHORITY HAVING JURISDICTION THAT RIGID CONDUIT (NOT FOR USE AS A WIREWAY) IS ACCEPTABLE FOR SUPPORT OF LIGHTING FIXTURES. IF NOT, CONTRACTOR SHALL PROVIDE ALTERNATE, ACCEPTABLE MEANS OF SUSPENDING THE FIXTURES AT NO ADDITIONAL COST TO THE OWNER.

#	Date	Title
01	03/14/2016	OWNER REVIEW
02	03/21/2016	PERMIT/BID



Client: **BJS WHOLESALE CLUB**

BJS WHOLESALE CLUB #029  
PORTLAND, ME

DATE: 03/21/2016 PROJECT NO.: 17879

SHEET TITLE: **ELECTRICAL DETAILS**

SHEET NUMBER: **E800**