

GENERAL ELECTRICAL NOTES:

- ELECTRICAL CONTRACTOR SHALL VERIFY FIELD CONDITIONS BEFORE SUBMITTING BID.
- ALL WORK SHALL BE DONE IN ACCORDANCE WITH THE NATIONAL ELECTRICAL CODE, BUILDING CODES, AND CURRENT OSHA REQUIREMENTS.
- ELECTRICAL CONTRACTOR SHALL OBTAIN AND PAY FOR ALL PERMITS, CERTIFICATES, ETC., REQUIRED.
- ELECTRICAL CONTRACTOR SHALL OBTAIN AND PAY FOR BOTH ROUGH AND FINAL UNDERWRITERS OR OTHER APPROVED INSPECTION AGENCY CERTIFICATES OF ELECTRICAL INSPECTION. THESE CERTIFICATES SHALL BE PRESENTED WITH REQUEST FOR FINAL PAYMENT.
- IT IS THE INTENT OF THESE PLANS TO PROVIDE A COMPLETE OPERATING ELECTRICAL SYSTEM. THIS CONTRACTOR SHALL FURNISH AND INSTALL ALL WIRING, EQUIPMENT, MATERIAL, ETC., REQUIRED, EXCEPT WHERE SPECIFICALLY NOTED AS BEING FURNISHED BY OTHERS. SHOULD THERE BE ANY QUESTIONS CONCERNING RESPONSIBILITY, THEY SHALL BE SETTLED BEFORE BID SUBMISSION AND CONTRACT SIGNED. NO EXTRA CHARGES WILL BE ALLOWED.
- CONSULT WITH CONTRACTORS FURNISHING HVAC EQUIPMENT TO VERIFY LOADS AND SECURE EXACT LOCATIONS (REFER TO HVAC DRAWINGS). WIRE AND CONNECT TO ALL HVAC EQUIPMENT, INCLUDING CONTROLS AND THERMOSTATS.
- CONTRACTOR SHALL MAKE ALL FINAL CONNECTIONS TO ALL CONTROLS, OWNER-SUPPLIED EQUIPMENT, MECHANICAL AND PLUMBING AS REQUIRED.
- CIRCUIT NUMBERS ON THE DRAWINGS ARE FOR IDENTIFICATION ONLY AND DO NOT INDICATE THE POSITION ON THE PANEL BOARD. CONNECT THE CIRCUITS WITH THE LIGHTEST LOADS AND THE RECEIPTABLE CIRCUITS NEAR THE TOP OF THE PANEL, AND THE MORE HEAVILY LOADED CIRCUITS NEAR THE BOTTOM. BALANCE ALL CIRCUITS EVENLY BETWEEN PHASES SO THAT FEEDER WIRES CARRY APPROXIMATELY EQUAL CURRENT. REBALANCE IF NECESSARY.
- TERMINATIONS (LUGS, TERMINALS, ETC.) ON ALL EQUIPMENT SHALL BE RATED FOR USE WITH 75C CONDUCTORS.
- CIRCUITS FOR POWER SHALL NOT BE LESS THAN #12 AWG. WIRES ARE TO BE SIZED FOR THE APPROPRIATE VOLTAGE.
- ALL 1 POLE, 15 AND 20 AMPERE BRANCH CIRCUITS SERVING LIGHTING AND ELECTRONIC LOADS SHALL BE 2 WIRE CIRCUITS PROVIDING AN INDIVIDUAL NEUTRAL CONDUCTOR FOR EACH UNGROUNDED (HOT) CIRCUIT CONDUCTOR. DO NOT SHARE NEUTRAL CONDUCTORS FOR LIGHTING OR ELECTRONIC LOADS. MINIMUM BRANCH CIRCUIT WIRING SHALL BE 2#12-1#12 IN 1/2" CONDUIT.
- ALL WIRING INSTALLED UNDER THIS CONTRACT SHALL BE TESTED FOR PROPER CONNECTIONS AND SHORT CIRCUITS PRIOR TO THE TURNING OVER OF WORK AS A COMPLETE UNIT.
- ALL ELECTRICAL SYSTEM GROUNDING AS SHOWN ON DRAWINGS AND IN ACCORDANCE WITH THE N.E.C. AND ALL APPLICABLE LOCAL.
- INSULATED (GREEN) GROUND CONDUCTORS SHALL BE PROVIDED IN ALL FEEDERS AND BRANCH CIRCUITS.
- INSULATED (GREEN WITH YELLOW STRIPE) ISOLATED GROUND CONDUCTORS SHALL BE PROVIDED IN FEEDERS AND BRANCH CIRCUITS WHERE ISOLATED GROUND IS INDICATED.
- ALL CONDUITS PASSING THROUGH PARTITIONS ARE TO BE APPROPRIATELY SLEEVED AND SEALED.
- ELECTRICAL CONTRACTOR SHALL FURNISH AND INSTALL ALL CONDUIT(S) FOR TELEPHONE/DATA SYSTEMS AS REQUIRED.
- ALL OUTLET BOXES SHALL BE STEEL, EXTRA DEEP WITH GROUNDING PIGTAILS. GROUNDING PUSH-CLIPS ARE NOT ACCEPTABLE. PROVIDE PROPER TYPE CONNECTORS AT ALL BOXES FOR CONDUIT AND MC CABLE.
- DISCONNECT SWITCHES SHALL BE HEAVY DUTY TYPE WITH LOCKABLE HANDLE. ONE MANUFACTURER SHALL BE USED THROUGHOUT THE PROJECT. ACCEPTABLE MANUFACTURERS ARE: SQUARE D, GENERAL ELECTRIC, SIEMENS, AND CUTLER-HAMMER.
- STARTERS SHALL BE NEMA COMBINATION MAGNETIC MOTOR STARTERS SIZED PER MOTOR HP, WITH INTEGRAL RED RUN PILOT LIGHT AND H-O-A SWITCH. COORDINATE MOTOR STARTER TYPE AND FEATURES WITH THE REQUIREMENTS OF THE MECHANICAL EQUIPMENT AND THE CONTROL SYSTEM. PROVIDE OVERLOAD, UNDER VOLTAGE AND PHASE LOSS PROTECTION IN ALL STARTERS. STARTERS FOR MOTORS 50 HP AND LARGER SHALL BE REDUCED VOLTAGE AUTO TRANSFORMER TYPE. ONE MANUFACTURER SHALL BE USED THROUGHOUT THE PROJECT. ACCEPTABLE MANUFACTURERS ARE: SQUARE D, GENERAL ELECTRIC, SIEMENS, AND CUTLER-HAMMER.
- ALL WIRE NUTS SHALL BE 3M WIRE NUT TYPE WITH INTERIOR COPPER THREAD TYPE COILS.
- TEMPORARY LIGHT AND POWER SHALL BE PROVIDED BY ELECTRICAL CONTRACTOR DURING THE COURSE OF CONSTRUCTION.
- DO NOT SCALE FROM THESE DRAWINGS.
- DO NOT MAKE ANY CHANGES OR SUBSTITUTIONS WITHOUT SPECIFIC WRITTEN APPROVAL FROM THE OWNER.
- GUARANTEE ALL WORK, MATERIAL, AND EQUIPMENT FOR A PERIOD OF ONE YEAR FROM THE DATE OF APPROVAL AND FINAL ACCEPTANCE.
- ELECTRICAL CONTRACTOR SHALL DERATE ALL CONDUCTORS IN RACEWAYS AND CABLE (I.E. UNDER FLOOR DUCTS AND CONDUITS) IN ACCORDANCE WITH N.E.C. 310-15 NOTE #8.
- ALL SYSTEMS WIRING INCLUDING BUT NOT LIMITED TO: POWER WIRING, FIRE ALARM SECURITY, CONTROL, TELEPHONE SYSTEMS, ETC., SHALL BE DONE IN ACCORDANCE WITH THE N.E.C. WIRING METHODS, FIRE PROTECTIVE SIGNALING SYSTEM, CONDUCTORS, AND GENERAL WIRING, AND 800 COMMUNICATIONS SYSTEMS AND APPLICABLE LOCAL CODE.
- PRIOR TO ANY SAW CUTTING ELECTRICAL CONTRACTOR OR GENERAL CONTRACTOR TO XRAY FLOOR IN AREAS OF SAW CUTTING FOR ANY UNDERFLOOR POWER.

1 DEMO POWER FLOOR PLAN
 E201 SCALE: 1/8" = 1'-0"

GENERAL DEMOLITION NOTES:

- THESE DRAWINGS REPRESENT THE GENERAL ARRANGEMENT OF EXISTING ELECTRIC TO BE REMOVED, RELOCATED OR TO REMAIN. IT IS THE INTENT TO REMOVE AND/OR RELOCATE ALL ELECTRIC THAT INTERFERES WITH NEW ELECTRIC AS SHOWN OR INTENDED. THIS CONTRACTOR SHALL VERIFY EXISTING CONDITIONS PRIOR TO BIDDING AND PERFORM ALL WORK REQUIRED TO ACCOMPLISH THE INTENT.
- WHERE EQUIPMENT IS SHOWN TO BE REMOVED, ELECTRICALLY DISCONNECT THE EQUIPMENT AND REMOVE IT. REMOVE THE CONDUCTORS BACK TO THE BRANCH CIRCUIT PANEL AND REMOVE ALL EXPOSED RACEWAY AND ENCLOSURES NO LONGER TO BE USED.
- REMOVE OR RELOCATE AS NECESSARY ELECTRICAL WORK, WHICH IS AFFECTED BY THE WORK OF OTHER TRADES.
- ADD OR ALTER WIRING AS NECESSARY TO MAINTAIN POWER AND CONTROL TO ALL EXISTING SYSTEMS REMAINING.
- DISCONNECT ELECTRICAL CONNECTIONS TO ALL EXISTING EQUIPMENT REMOVED OR RELOCATED BY OTHER DIVISIONS. RECONNECT RELOCATED EQUIPMENT.
- DISCONNECT, REINSTALL, EXTEND CONDUIT AND CONDUCTORS AND RECONNECT ALL ELECTRICAL DEVICES TO BE RELOCATED UNLESS OTHERWISE NOTED.
- RETURN ALL PANEL BOARDS, CIRCUIT BREAKERS, FLUORESCENT FIXTURES, CLOCKS, AND INTERCOMMUNICATION EQUIPMENT TO THE OWNER IN GOOD CONDITION AFTER REMOVAL. ALL OTHER MATERIAL OR EQUIPMENT, EXCEPT AS OTHERWISE NOTED, SHALL BECOME THE PROPERTY OF THE CONTRACTOR AND SHALL BE REMOVED FROM THE SITE LEGALLY.
- ELECTRICAL CONTRACTOR SHALL DISPOSE OF ALL PCB BALLASTS AND LAMPS PROPERLY.
- EXISTING STRUCTURAL MEMBERS SHALL NOT BE CUT OR DRILLED.
- ANY FIXTURE THAT HAS ANY ELECTRICAL ATTACHMENTS IS THE RESPONSIBILITY OF THE CONTRACTOR TO RELOCATE AND/OR REMOVE.
- ELECTRICAL CONTRACTOR WILL BE ON SITE FOR AND THROUGHOUT ANY SAW CUTTING PROCESS.
- ELECTRICAL CONTRACTOR SHALL MAINTAIN EXISTING ELECTRICAL SYSTEMS TO BE REMOVED UNTIL NEW SYSTEMS ARE READY FOR CHANGE OVER. ELECTRICAL CONTRACTOR SHALL COORDINATE ALL CHANGEOVER OF ELECTRICAL SYSTEMS WITH BJS CONSTRUCTION MANAGER.

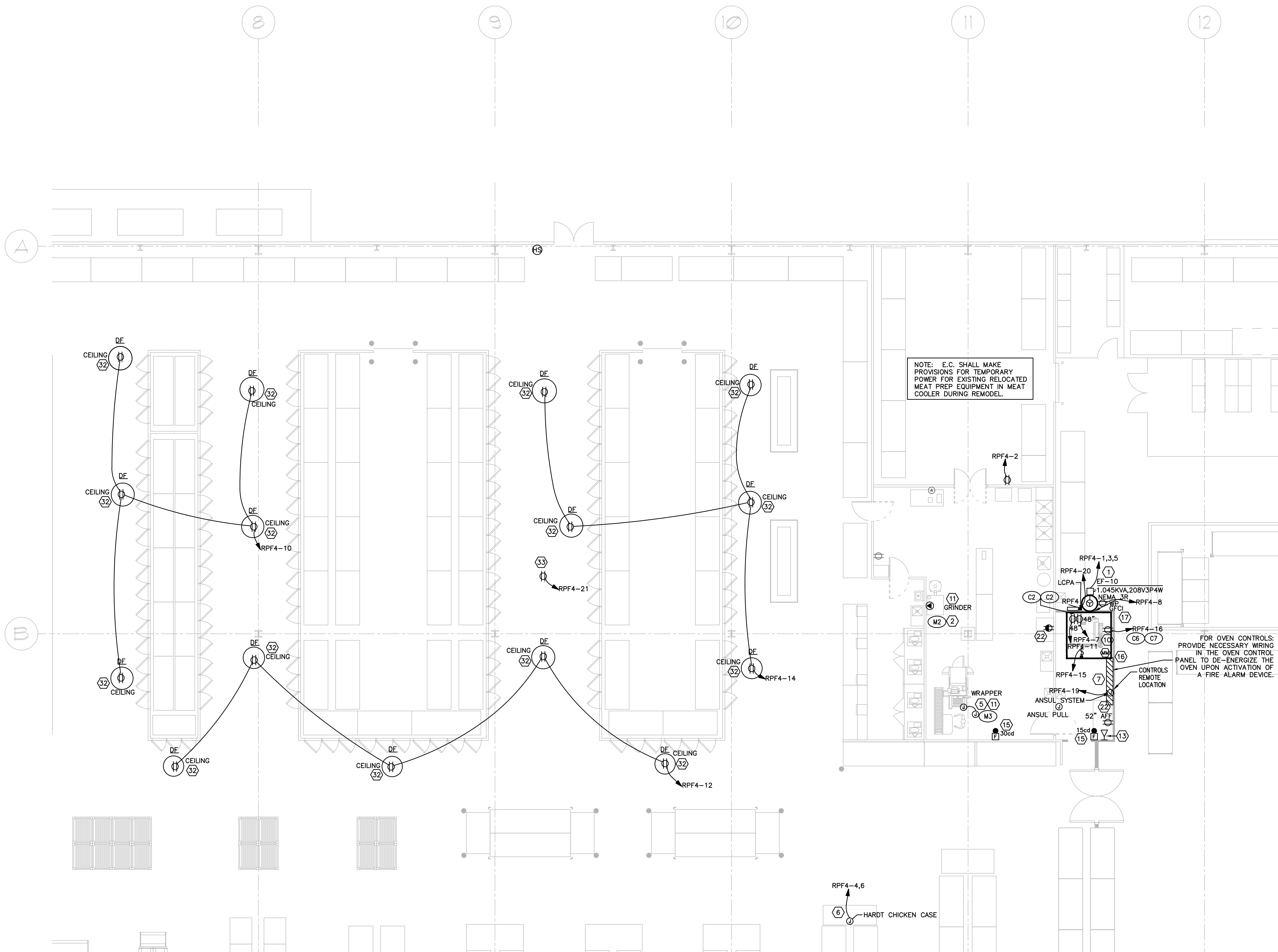
DEMO SPECIFIC NOTES: (APPLY TO DRAWING E200 WHERE INDICATED)

- RELOCATE EXISTING EQUIPMENT/DEVICE INDICATED TO NEW LOCATION SHOWN ON NEW POWER PLAN. ELECTRICAL CONTRACTOR IS RESPONSIBLE FOR ALL LOW VOLTAGE (TELEPHONE, DATA, VIDEO, SYSTEM EQUIPMENT) RELOCATION AS WELL AS ELECTRICAL POWER RELOCATION.
- PROVIDE SELECTIVE ELECTRICAL DEMOLITION SERVICES FOR ALL ELECTRICAL SYSTEMS THROUGHOUT THE EXISTING SPACES THAT WILL BE RENOVATED UNDER THIS PROJECT (INCLUDING PANELBOARDS, FEEDERS, BRANCH CIRCUITING, CONDUIT, WIRING, DEVICES, ETC.). ALSO PROVIDE TEMPORARY CONSTRUCTION POWER AND LIGHTING AS REQUIRED. FIELD VERIFY ALL RELATED EXISTING CONDITIONS IN DETAIL PRIOR TO SUBMITTING A BID.

DELI EQUIPMENT SCHEDULE								
ITEM NO.	DESCRIPTION	MANUFACTURER	MODEL NO.	VOLT/PH.	HP.	KW.	AMP.	REMARKS
D1	SLICER	BIZERRA	GSP-H	120/60/1	---	0.36	3.5	---
D2	SERVICE SCALE/PRINTER	HOBART	QUANTUM	120/60/1	---	0.18	1.5	---
DB	TABLE TOP WRAP STATION	HEAT SEAL	625A	120/60/1	---	0.78	6.5	---

MEAT PREP EQUIPMENT SCHEDULE								
ITEM NO.	DESCRIPTION	MANUFACTURER	MODEL NO.	VOLT/PH.	HP.	KW.	AMP.	REMARKS
M2	MIXER/GRINDER	HOBART	MG-1532	208/60/3	7.5	16.8	30	25-5/16" X 50-3/4" X 48-3/4"
M3	WRAPPER STATION - RT/LFT	HOBART	AWS-1RL	208/60/1	---	3.12	15	4-WIRE

CHICKEN PREP EQUIPMENT SCHEDULE								
ITEM NO.	DESCRIPTION	MANUFACTURER	MODEL NO.	VOLT/PH.	HP.	KW.	AMP.	REMARKS
C2	INFERNO GC DBLE DECK OVEN	HARDT	1037	120/60/1	---	1.44	12	OVEN #1
C3	2TIER ISLAND CHICKEN DISPLAY	HARDT	---	120/60/1	---	1.44	12	OVEN #2
C6	RESERVOIR FOR DD OVEN	HARDT	2609	120/60/1	---	.312	2.6	---
C7	GREASE CADDY FOR GC OVEN	DARLING INTL INC.	700061	120/60/1	---	.312	2.6	---



NEW POWER FLOOR PLAN
 E201 SCALE: 1/8" = 1'-0"

NEW POWER SPECIFIC NOTES: (APPLY TO DRAWING E200 WHERE INDICATED)

- PROVIDE 30A/3P/NF NEMA-3R 800V DISCONNECT SWITCH AND FINAL CONNECTION FOR HVAC EQUIPMENT.
- RECEPTACLE/ENCLOSURE: RECEPTACLE IN W/P ENCLOSURE: HUBBELL #2810 (TWIST-LOCK TYPE, GROUNDING TYPE: NEMA L21-30, 30A, 34Y, 120/208V) AND PLUG W/M COVER (HUBBELL #2811/6035).
- NOT USED.
- PROVIDE 'SO' CORD DROP FROM CEILING AND TERMINATE 5'-0" A.F.F. WITH TWIST LOCK CONNECTOR BODY IN WEATHERPROOF ENCLOSURE WITH COVER. VERIFY NEMA CONFIGURATION OF CONNECTOR BODY REQUIRED PRIOR TO INSTALLATION.
- UTILIZE COLUMN FOR ELECTRIC POWER DROP FOR EQUIPMENT SHOWN. CONCEAL WIRE AND CONDUIT WHERE EVER POSSIBLE. ELECTRICAL CONTRACTOR TO MAKE FINAL CONNECTION TO EQUIPMENT SHOWN.
- CONNECT THE HOOD'S ANSUL SYSTEM TO THE BUILDING'S FIRE ALARM SYSTEM.
- MOUNT RECEPTACLES IN MEAT PREP AT 4'-0" AFF OR 6" ABOVE COUNTERS AND IN WEATHERPROOF ENCLOSURES, UNLESS OTHERWISE NOTED.
- REWORK EXISTING CONDUIT AND WIRE FOR RELOCATED EQUIPMENT TO NEW LOCATION. EXTEND/MODIFY/SUPPLEMENT EXISTING WIRE AND CONDUIT AS REQUIRED FOR A COMPLETE INSTALLATION.
- NOT USED.
- E.C. SHALL PROVIDE JUNCTION BOX AT 54" AFF IN WALL FOR NEW PHONE LOCATION. ROUTE CONDUIT FROM JUNCTION BOX UP THRU WALL INTO JOIST SPACE. E.C. SHALL PROVIDE CAT 3 CABLE FOR NEW PHONE IN JUNCTION BOX WITH 20' WHP AND ROUTE CABLE TO MAIN TELEPHONE DEMARCATION AT REAR OF STORE WITH 20' WHP. FINALE TERMINATIONS BY OTHERS.
- NOT USED.
- THE NEW FIRE ALARM DEVICE INTO EXISTING FIRE ALARM SYSTEM. VERIFY EXISTING FIRE ALARM BATTERY SPARE CAPACITY AND PROVIDE AN ADDITIONAL EXTERIOR PANEL ONLY IF NECESSARY.
- PROVIDE MONITOR MODULE FOR MONITORING OF KITCHEN HOOD ANSUL FIRE SUPPRESSION SYSTEM. INSTALL ANSUL SYSTEM MANUAL PULL STATION (FURNISHED BY ANSUL) LOCATED AS DIRECTED BY AUTHORITIES HAVING JURISDICTION (PROVIDE LONG RADIUS SWEEP BENDS FOR ALL RELATED CONDUIT).
- PROVIDE GFCI WEATHER RESISTANT RATED RECEPTACLE IN WEATHER PROOF ENCLOSURE FOR EF ON ROOF.
- REFER TO DETAIL 1 ON SHEET E800 FOR CONTACTOR WIRING DIAGRAM. SEE SHEET E801 FOR CONTACTOR SCHEDULES.
- REWORK EXISTING CONDUIT AND WIRE FROM NEARBY DEMOLISHED EQUIPMENT FOR NEW EQUIPMENT TO NEW LOCATION. EXTEND/MODIFY/SUPPLEMENT EXISTING WIRE AND CONDUIT AS REQUIRED FOR A COMPLETE INSTALLATION.
- ELECTRICAL CONTRACTOR TO MOUNT RECEPTACLE FOR AIRBUS FAN TO UNSTRUT OR CEILING BEAM NEAR FAN. ELECTRICAL CONTRACTOR TO PROVIDE TWIST LOCK PLUG TO CORD FURNISHED WITH FAN AND PLUG INTO ELECTRICAL CONTRACTOR PROVIDED RECEPTACLE. ELECTRICAL CONTRACTOR TO SECURE CORD PER NEC. ELECTRICAL CONTRACTOR TO PROVIDE CONTACTORS FOR ALL FANS AND WIRE TO EXISTING EMS HVAC CONTROLLER. ELECTRICAL CONTRACTOR TO PROGRAM EXISTING CONTROLLER TO BE FULLY OPERATIONAL WITH FANS.
- PROVIDE WHITE 'SO' CORD DROP (120V 1PH) FROM CEILING DOWN TO FLOOR FOR AHT CASE. PROVIDE TWIST LOCK RECEPTACLE AT THE BAR JUST AND TERMINATE AT THE FLOOR LEVEL IN A JUNCTION BOX. VERIFY NEMA CONFIGURATION OF CONNECTOR BODY REQUIRED BY EQUIPMENT PRIOR TO INSTALLATION.

BAKERY, DELI, CHICKEN ROTISSERIE, AND MEAT PREP CONSTRUCTION NOTES:

- ELECTRICAL WORK SHALL BE INSTALLED IN ACCORDANCE WITH APPLICABLE LOCAL AND STATE REGULATIONS. IT IS THE RESPONSIBILITY OF THE CONTRACTOR TO ENSURE THAT WORK IS PERFORMED IN COMPLIANCE WITH THE REGULATIONS.
- DEVICES, EQUIPMENT, AND OUTLETS IN COOLERS & FREEZERS SHALL BE WEATHERPROOF (WET AREAS).
- DEVICES, EQUIPMENT, AND OUTLETS IN MEAT PREP, BAKERY, PRODUCE, CHICKEN ROTISSERIE, AND DELI AREAS SHALL ALL BE GFCI RATED.
- PROVIDE CORD AND PLUG TO MATCH RECEPTACLE FOR OWNER CORDS WHICH SHALL BE OF ADEQUATE LENGTH PER INTENDED USE.
- IN BAKERY, PROVIDE 'SO' TYPE DROP CORDS TO SERVE CENTER LOCATED EQUIPMENT. PROVIDE MATCHING OUTLET ON CORDS WITH WIRE SIZE TO MATCH CIRCUIT BASKET AT EACH END AND TWIST LOCK OUTLETS.
- UNLESS OTHERWISE NOTED, MOUNT ALL MEAT PREP RECEPTACLES AT 48" A.F.F. OR 6" ABOVE COUNTERS AND IN WEATHERPROOF ENCLOSURES.

FIRE ALARM GENERAL NOTES

- CONTRACTOR SHALL SUBMIT AN ALTERNATE BID FOR ADDITIONAL HORNS & STROBES MAY BE REQUIRED BY THE LOCAL JURISDICTION HAVING AUTHORITY. FOR DESIGN (& PRICING) PURPOSES, CONTRACTOR SHALL INCLUDE THE POSSIBILITY OF AT LEAST SIX (6) STROBES & SIX (6) HORNS TO THE SYSTEM. IF ALTERNATE BID IS NOT SUBMITTED, THE CONTRACTOR ASSUMES THIS WORK UNDER THE BASE CONTRACT.
- CONTRACTOR SHALL INCLUDE THE COMBINATION STROBE/HORN DEVICES WHEN SUBMITTING BIDS.
- CONTRACTOR SHALL RE-WORK BATTERY CALCULATIONS AS REQUIRED TO MEET LOCAL JURISDICTIONAL REQUIREMENTS.
- CONTRACTOR SHALL INCLUDE COST FOR PROGRAMMING AND RETESTING ENTIRE SYSTEM FOR ALL CHANGES NOTED ON THE DRAWINGS TO ENSURE A COMPLETE WORKING SYSTEM.

3 OVERALL FLOOR PLAN
 E201 SCALE: 1" = 80'

Revisions

#	Date	Title
01	03/14/2016	OWNER REVIEW
02	03/21/2016	PERMIT/BID



Client:
BJS WHOLESALE CLUB

BJS WHOLESALE CLUB
 #029
 PORTLAND, ME

DATE: 03/21/2016 PROJECT NO. 17879

SHEET TITLE
POWER FLOOR PLANS

SHEET NUMBER
E201