

GENERAL NOTES

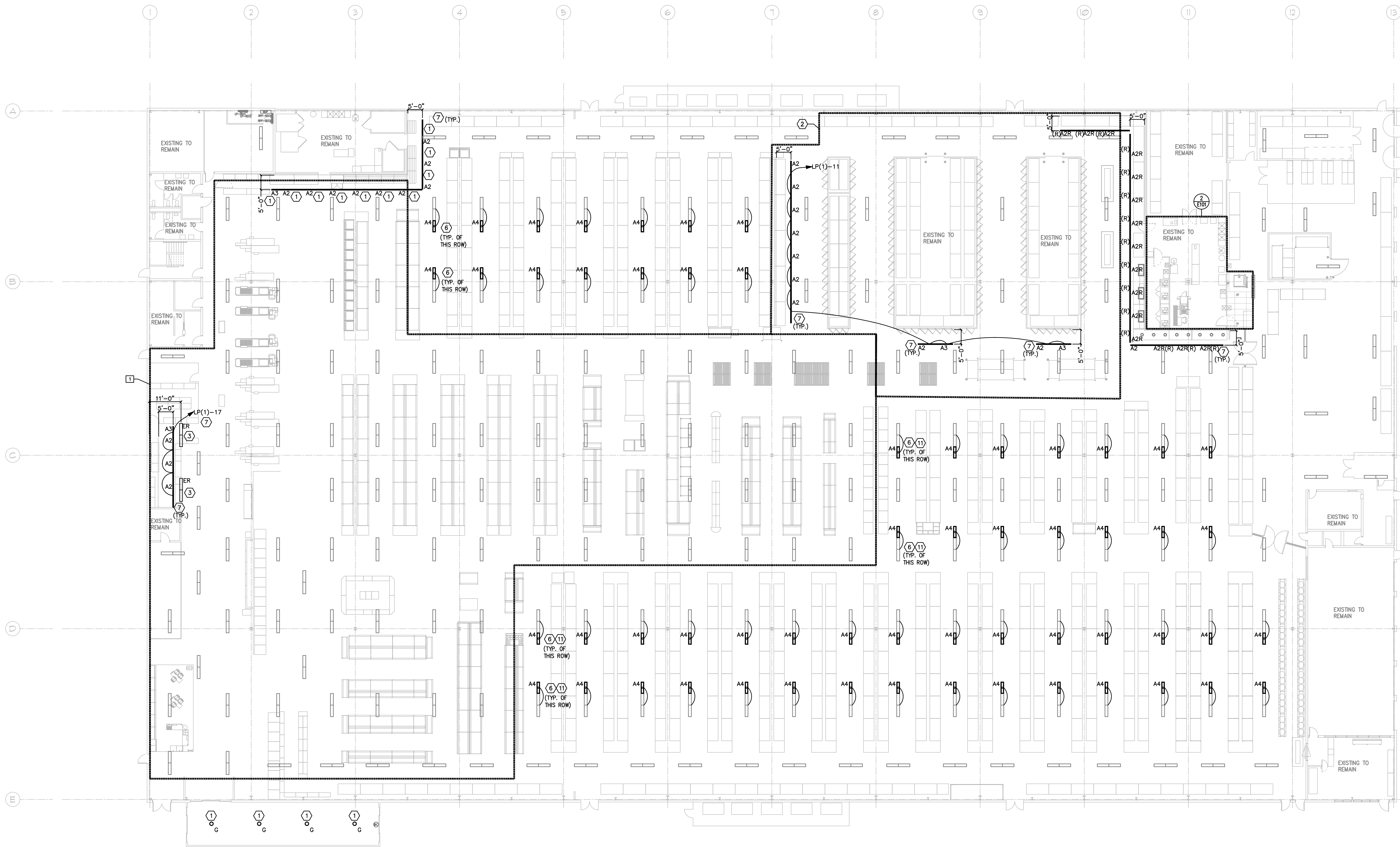
- ALL WIRING FOR LIGHTING SHALL BE #10 AWG, UNLESS NOTED OTHERWISE.
- COORDINATE LIGHT FIXTURE LOCATIONS TO AVOID SKYLIGHTS, SPRINKLER HEADS, AND DUCTWORK.
- LIGHTING CIRCUITS SHALL HAVE INDIVIDUAL NEUTRAL CONDUCTORS. NO MULTI-WIRE CIRCUITS SHARING NEUTRALS.
- REFER TO SHEET E001 FOR LIGHT FIXTURE RESPONSIBILITIES. REFER TO SHEET E800 FOR LIGHT FIXTURE DETAILS.
- ELECTRICAL CONTRACTOR TO FIELD VERIFY EXISTING WIRING METHOD (MODULAR WIRING SYSTEM, WIRE AND CONDUIT, MC CABLE, S-I CORD, ETC.) IN FIELD. ELECTRICAL CONTRACTOR TO REUSE WIRING METHOD WHERE EVER POSSIBLE AND SUPPLEMENT SYSTEM WHERE REQUIRED FOR ALL REPLACEMENT AND RELOCATED LIGHT FIXTURES PER SPECIFIC NOTES 1 AND 3.
- ELECTRICAL CONTRACTOR SHALL PROVIDE NEW PIGTAIL FOR ALL NEW LIGHT FIXTURES AS REQUIRED TO CONNECT TO EXISTING WIRING SYSTEMS AS DESCRIBED IN GENERAL NOTE 5.
- PROVIDE PROTECTIVE CLEAR SAFETY SHIELDS FOR ALL EXPOSED FLUORESCENT LAMPS IN FOOD PREP AREAS.
- ALL EXISTING SUSPENDED FLUORESCENT WALL WASH FIXTURES SHALL BE RE-ADJUSTED, STRAIGHTENED AND ALIGNED PARALLEL WITH BULKHEAD OR HANGING SIGN BEING ILLUMINATED BY THESE FIXTURES. ADJUST LIGHT FIXTURES TO BE FLUSH WITH TOP OF SIGN PANEL AND MAINTAIN A LEVEL MOUNTING HEIGHT.
- ALL SALES FLOOR HIGH BAY LIGHT FIXTURE ROWS AND COLUMNS SHALL BE STRAIGHTENED AND ALIGNED TO CENTER OF AISLES AS DIRECTED BY BJS/ CONSTRUCTION MANAGER.
- ALL SALES FLOOR LIGHTING CORDS/WIRE IN CEILING SHALL BE WHITE.

SPECIFIC NOTES

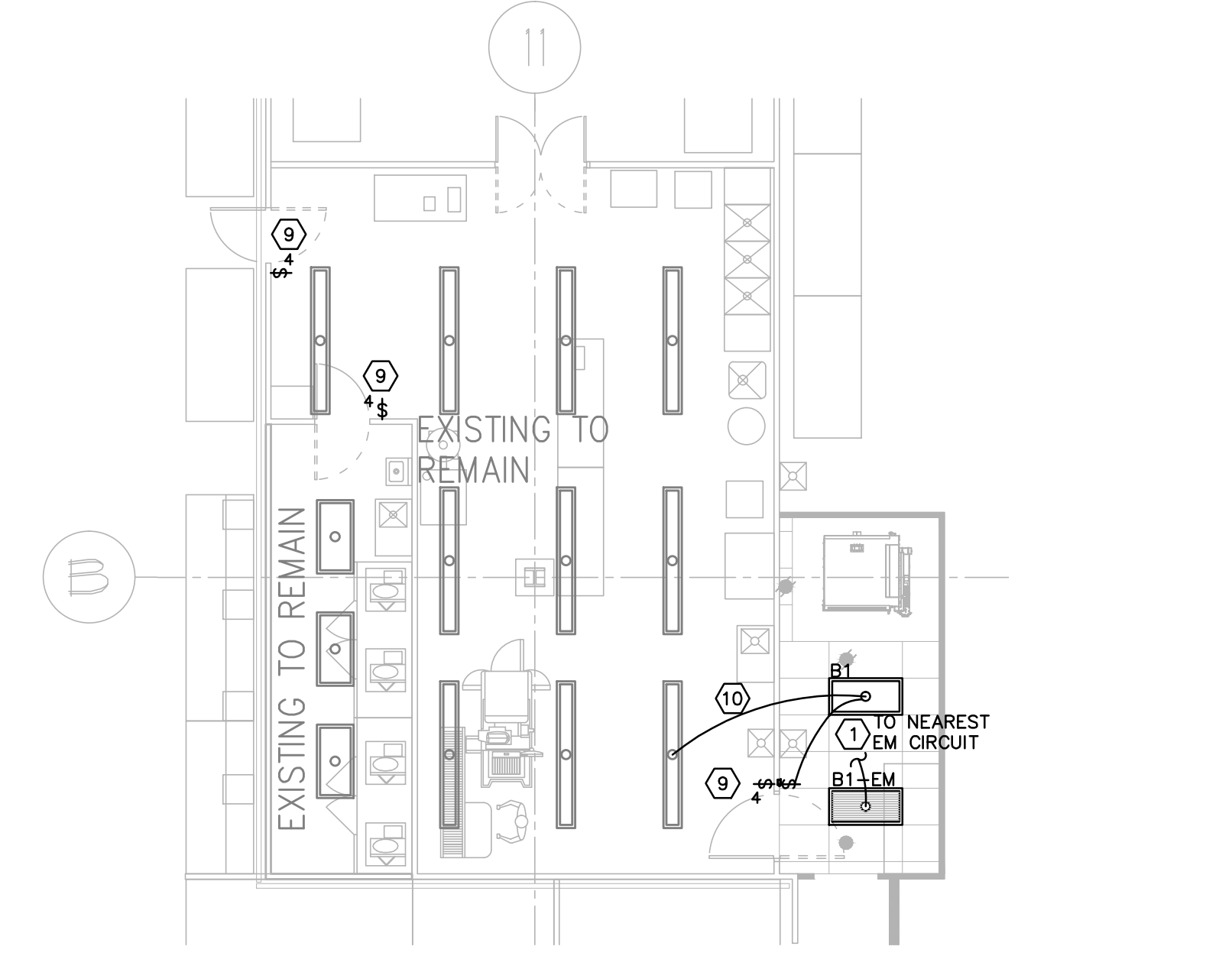
- NEW LIGHT FIXTURE TO REPLACE EXISTING. EXTEND/MODIFY/ SUPPLEMENT EXISTING WIRING SYSTEM TO NEW LIGHT FIXTURE. MAINTAIN ELECTRICAL CIRCUIT AND LIGHTING CONTROL. FOR NEW LIGHT FIXTURE, CIRCUITS IN PARENTHESIS SHOWN FROM EXISTING DRAWINGS. FIELD VERIFY EXISTING CIRCUITS AND UTILIZE EXISTING CIRCUITS IN SAME LOCATIONS. REFER TO GENERAL NOTE 5 ON THIS SHEET. ELECTRICAL CONTRACTOR SHALL PROVIDE PIGTAIL FOR ALL NEW TS LIGHT FIXTURES TO MATCH EXISTING WIRING SYSTEM AS MENTIONED IN GENERAL NOTE 5.
- LIGHT FIXTURES IN PERISHABLES AND NOT ADJACENT TO HIGH STEEL SHOULD BE MOUNTED AT 18"-0" AFF. ELECTRICAL CONTRACTOR SHALL EXISTING/ MODIFY/ SUPPLEMENT ALL LIGHT FIXTURE SUPPORT, POWER WIRING, AND CONTROL WIRING AS REQUIRED FOR A COMPLETE RELOCATION.
- ALL EXISTING TYPE "ER" LIGHT FIXTURES TO BE RELOCATED AS SHOWN. EXTEND/MODIFY/SUPPLEMENT EXISTING WIRING SYSTEM TO NEW LOCATION SHOWN. MAINTAIN ELECTRICAL CIRCUIT AND LIGHTING CONTROL. FOR RELOCATED LIGHT FIXTURE, CIRCUITS IN PARENTHESIS SHOWN FROM EXISTING DRAWINGS. FIELD VERIFY EXISTING CIRCUITS AND UTILIZE EXISTING CIRCUITS IN SAME LOCATIONS. REFER TO GENERAL NOTE 5 ON THIS SHEET.
- ELECTRICAL CONTRACTOR SHALL INSTALL NEW SUPPLEMENTAL A4 LIGHTING IN SALES FLOOR IN INSIDE OF ALL HIGH STEEL AISLES AS OUTLINED ON PLAN. EXTEND/SUPPLEMENT POWER CIRCUIT AND MATCH CONTROL FROM ADJACENT LIGHT FIXTURE TO NEW FIXTURE. ENSURE NEW TOTAL LOAD ON EACH LIGHTING CIRCUIT DOES NOT EXCEED 4432 WATTS PRIOR TO ENERGIZING THE CIRCUIT.
- MOUNT SIGN LIGHTING FLUSH WITH TOP OF SIGN PANEL. CENTER LIGHTS ON THE SIGN. LIGHTS SHOULD BE 5'-0" IN CENTER AWAY FROM FACE OF SIGNAGE. COORDINATE LOCATION WITH GENERAL CONTRACTOR.
- ELECTRICAL CONTRACTOR SHALL REWIRE EXISTING 6-WAY LIGHTING CONTROL TO NEW 4-WAY LIGHTING CONTROL. PROVIDE ALL MATERIAL AS REQUIRED FOR A COMPLETE INSTALLATION.
- EXTEND/MODIFY/ SUPPLEMENT EXISTING WIRING SYSTEM TO NEW LIGHT FIXTURE. MAINTAIN ELECTRICAL CIRCUIT AND LIGHTING CONTROL. FOR NEW LIGHT FIXTURE, CIRCUITS IN PARENTHESIS SHOWN FROM EXISTING DRAWINGS. FIELD VERIFY EXISTING CIRCUITS AND UTILIZE EXISTING CIRCUITS IN SAME LOCATIONS. REFER TO GENERAL NOTE 5 ON THIS SHEET. ELECTRICAL CONTRACTOR SHALL PROVIDE PIGTAIL FOR ALL NEW TS LIGHT FIXTURES TO MATCH EXISTING WIRING SYSTEM AS MENTIONED IN GENERAL NOTE 5.
- ALL A2, A3 AND A4 FIXTURES SHALL BE CONTROLLED BY DANFOSS LIGHTING CONTROL PANEL USING THE CASE LIGHT TASK CONTROL ZONE. IF EXISTING BAKERY AND MEAT A2 FIXTURES ARE NOT CURRENTLY CONTROLLED BY THE DANFOSS SYSTEM, INTERCEPT CIRCUITS AND ROUTE THRU DANFOSS CONTROL PANEL. PROVIDE ADDITIONAL CONTRACTORS AS REQUIRED.

BID ALTERNATE NOTES


ALTERNATE 2: IN ADDITION TO ALL OTHER LIGHTING RELATED WORK INDICATED, GENERAL CONTRACTOR TO REPLACE ALL LAMPS IN ALL EXISTING FLUORESCENT LUMINAIRES THAT UTILIZE 2-FOOT, 3-FOOT, 4-FOOT, 6-FOOT & 8-FOOT LAMPS WITH NEW T5/T8 LAMPS. THIS APPLIES TO NOT ONLY LUMINAIRES THAT WILL BE RELOCATED, BUT ALSO ALL EXISTING LUMINAIRES THAT WILL REMAIN IN THEIR CURRENT LOCATIONS. FIELD SURVEY THE FACILITY PRIOR TO SUBMITTING A BID TO DETERMINE QUANTITIES. SUBMIT QUANTITIES TO OWNER AT TIME OF BEING AWARDED THE PROJECT. THE LAMPS WILL THEN BE FURNISHED BY OWNER PER THE CONTRACTOR'S COUNTS. CONTRACTOR SHALL CLEAN ALL LUMINAIRES INSIDE AND OUT WHILE PERFORMING THESE RETROFITS, INCLUDING INSTALLING THE LAMPS.



1 LIGHTING FLOOR PLAN
E101 SCALE: 1/16" = 1'-0"




2 CHICKEN/DELI LIGHTING FLOOR PLAN
E101 SCALE: 1/8" = 1'-0"




ARCHITECTURAL GROUP INTERNATIONAL
15 West Semmes Street, Covington, KY 41011
770-595-6100 F: 502-651-0390
www.agi-us.com

designing where you want to go.



KOHR'S LOHMEYER HILL ENGINEERS, PSC
MECHANICAL/ELECTRICAL ENGINEERS
1538 ALEXANDRIA PIKE, STE. 11
FT. THOMAS, KENTUCKY 41075
800-334-9783
859-442-8056
859-442-8058 FAX

Revisions		
#	Date	Title
1	03/14/2016	OWNER REVIEW
2	03/11/2016	PERMIT/BD



Client:
BJS WHOLESALE CLUB

BJS WHOLESALE CLUB #029
PORTLAND, ME

DATE 03/11/2016	PROJECT NO. 17619
--------------------	----------------------

SHEET TITLE
LIGHTING FLOOR PLAN

SHEET NUMBER
E101