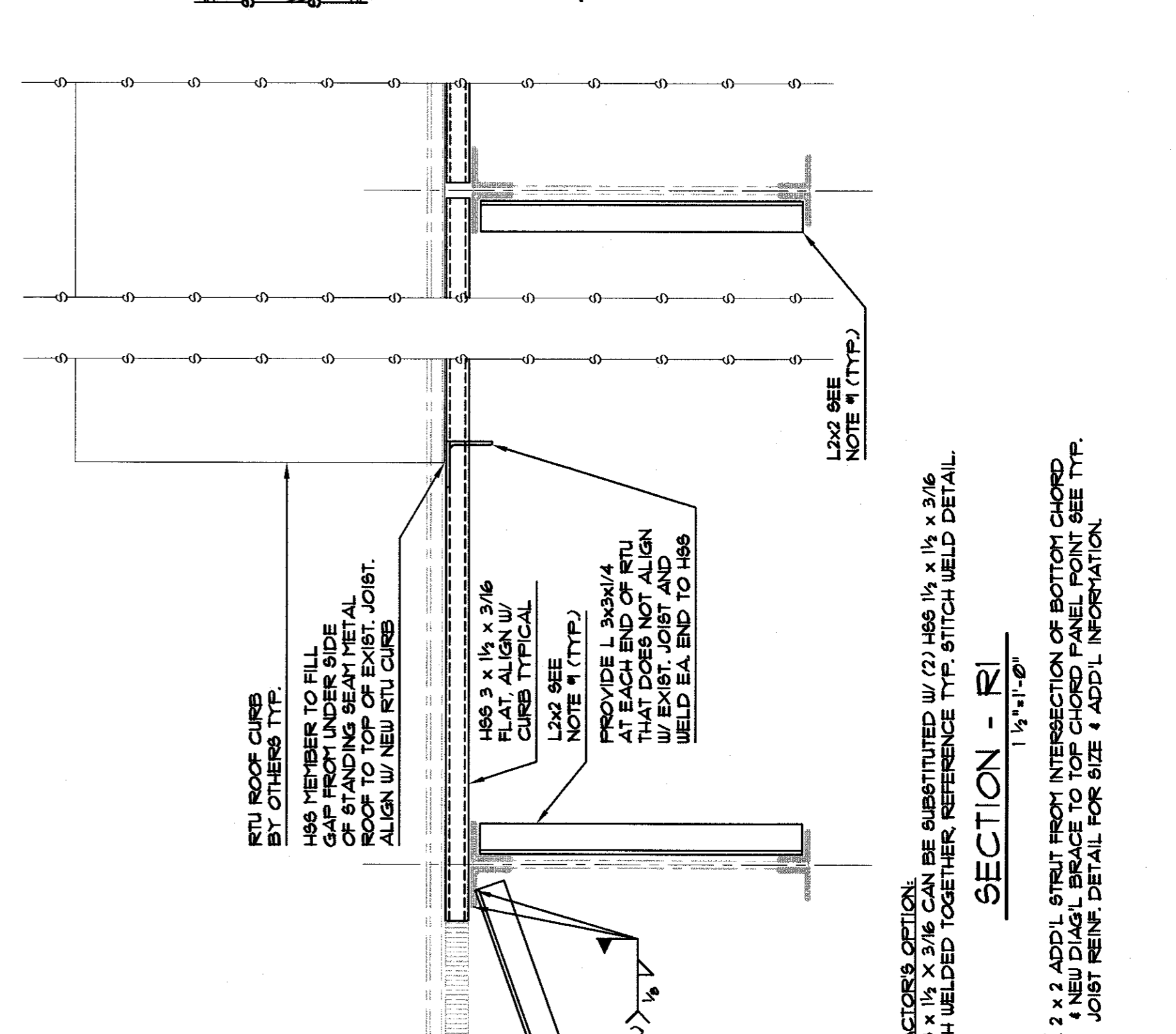
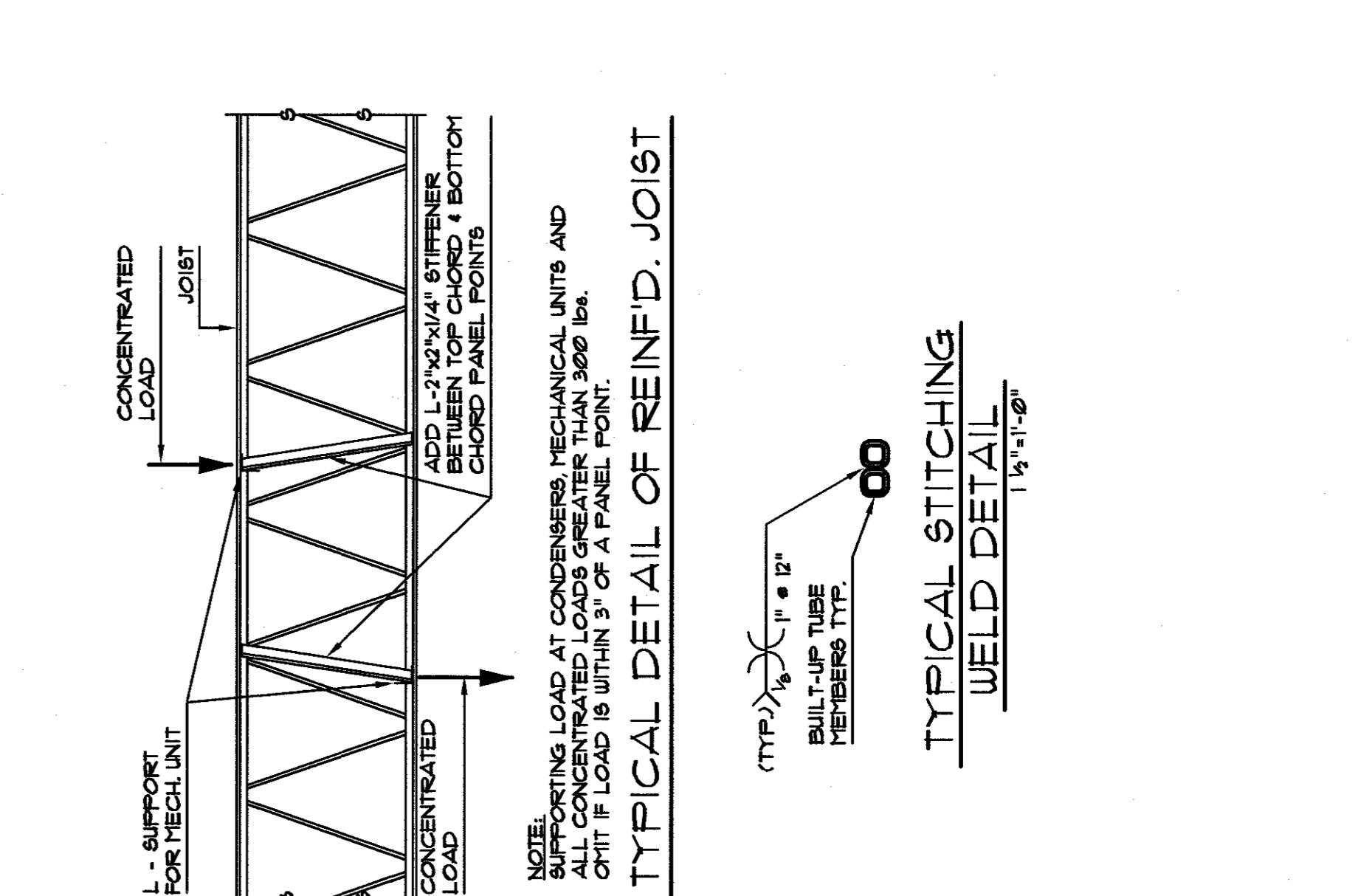


**ROOF FRAMING PLAN**  
 1/8" = 1'-0"

COORDINATE SIZE & LOCATION OF ALL MECHANICAL UNITS AND ROOF OPENINGS.  
 ALL MECHANICAL UNITS SHALL BE ANALYZED FOR OPERATING WEIGHT OF NEW RTU AS SPECIFIED. OPERATING WEIGHT INCLUDES WEIGHT OF UNIT, CURB WEIGHT, DUCT WEIGHT AND TRUCK ACCESSORIES. CONTACT STRUCTURAL ENGINEER FOR ACTUAL RTU OPERATING WEIGHTS ARE GREATER THAN SPECIFIED.

**GENERAL NOTES:**  
**STRUCTURAL STEEL**  
 1. All structural steel details shall be designed in accordance with the latest issue of the AISC Specification for Structural Steel Buildings - Allowable Stress Design and Plastic Design.  
 2. Field connections shall be welded as shown on drawings.  
 3. All steel shall be in accordance with the American Institute of Steel Construction, Inc. (AISC) Specification for Structural Steel Buildings. All steel shall develop the full strength of the material being welded, unless otherwise noted.  
 4. All steel shall be painted with one shop coat of paint except contact surfaces.  
 5. All structural steel shall be accurately set and properly held in position with adequate supporting bracing and stay until permanently secured.  
 6. All steel connections shall be substituted to the Mechanical Engineer for approval.  
 7. All steel plates, angles, channels are to be ASTM A-36 unless indicated otherwise.  
 8. All tube shapes shall be ASTM A500, Grade B, 11-1/2" x 3/16".

**MISCELLANEOUS**  
 1. Contractor shall verify all dimensions, sections and elevations on the job.  
 2. Consult the Mechanical drawings for verification of location and dimensions of all mechanical equipment, including, but not limited to, equipment pads and other product requirements.  
 3. Reproductions of contract documents are not acceptable as shop drawings and will be rejected.



**CONTRACTOR'S OPTION:**  
 H86 3 x 1/2 x 3/16 CAN BE SUBSTITUTED W/ (2) H86 1 1/2 x 1/2 x 3/16 STITCH WELDED TOGETHER REFERENCE TYP. STITCH WELD DETAIL.

**NOTE:**  
 1. L 1 x 1/2 x 3/16 ADD'L STIFF BRACE INTERSECTION OF BOTTOM CHORDS.  
 2. NEW DIAG. BRACE TO TOP CHORD PANEL POINT SEE TYP. JOIST REINF. DETAIL FOR SIZE & ADD'L INFORMATION.