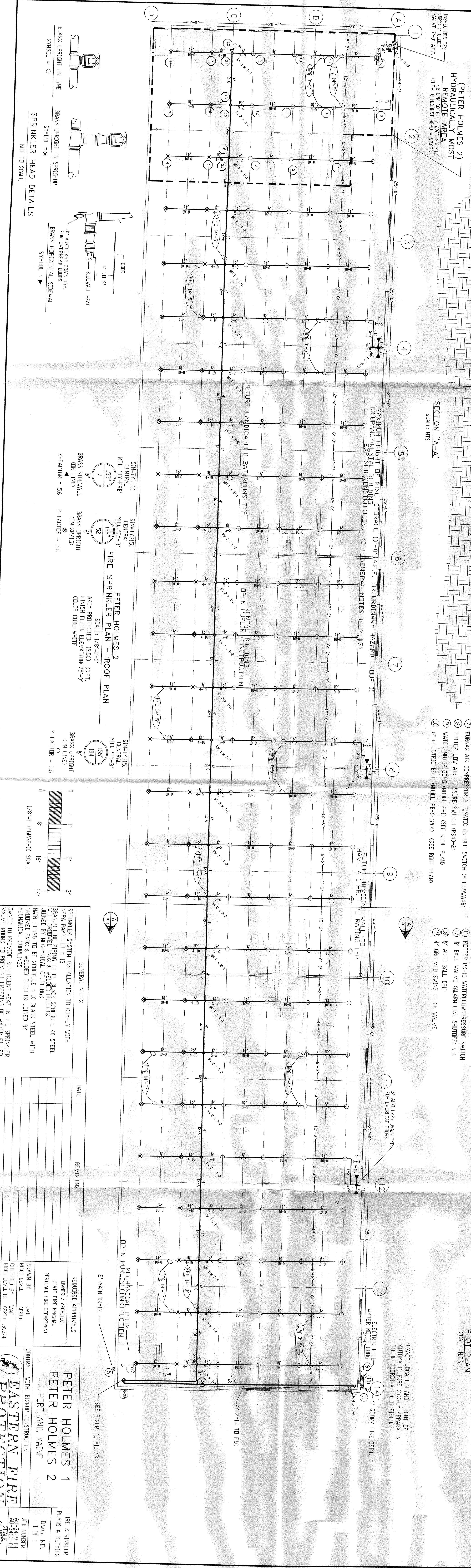


HYDRAULIC SYSTEM
 THIS BUILDING IS PROTECTED BY A HYDRAULICALLY DESIGNED AUTOMATIC SPRINKLER SYSTEM.
 PETER HOLMES 1
 LOCATION: RENTAL SPACE
 NO. OF SPRINKLERS: 17
 BASIS OF DESIGN:
 1. REPORT (CONSULT)
 2. RESIDUAL (GAS)
 SYSTEM DEMAND:
 1. WATER FLOW RATE (GPM) = 468.5
 2. RESIDUAL PRESSURE (PSI) = 148.5
 3. MAXIMUM FLOW (GPM) = 1000
 4. MAXIMUM PRESSURE (PSI) = 180

HYDRAULIC DATA NAMEPLATE
 TO BE MOUNTED AT SYSTEM RISER

HYDRAULIC SYSTEM
 THIS BUILDING IS PROTECTED BY A HYDRAULICALLY DESIGNED AUTOMATIC SPRINKLER SYSTEM.
 PETER HOLMES 2
 LOCATION: REMOTE AREA
 NO. OF SPRINKLERS: 17
 BASIS OF DESIGN:
 1. REPORT (CONSULT)
 2. RESIDUAL (GAS)
 SYSTEM DEMAND:
 1. WATER FLOW RATE (GPM) = 468.5
 2. RESIDUAL PRESSURE (PSI) = 148.5
 3. MAXIMUM FLOW (GPM) = 1000
 4. MAXIMUM PRESSURE (PSI) = 180

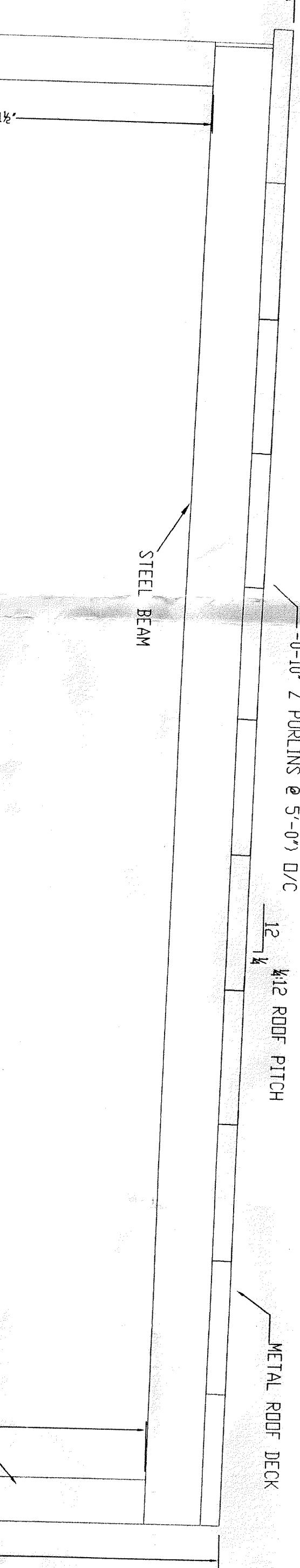
HYDRAULIC DATA NAMEPLATE
 TO BE MOUNTED AT SYSTEM RISER



GENERAL NOTES
 1. SPRINKLER SYSTEM INSTALLATION TO COMPLY WITH NFPA PARAGRAPH 11.3
 2. ALL DIMENSIONS ARE SHOWN FOR GENERAL LOCATION OF FIELD CONDITIONS.
 3. OCCUPANCY DESCRIPTION AND CLASSIFICATION: RENTAL BUILDING (R-1)

PETER HOLMES 1 FIRE SPRINKLER PLAN - ROOF PLAN
 SCALE: 1/8"=1'-0"
 AREA PROTECTED: 10,000 SQ. FT.
 FINISH FLOOR ELEVATION: 75'-0"
 COLOR CODE: YELLOW
 K-FACTOR = 56

PETER HOLMES 2 FIRE SPRINKLER PLAN - ROOF PLAN
 SCALE: 1/8"=1'-0"
 AREA PROTECTED: 10,000 SQ. FT.
 FINISH FLOOR ELEVATION: 75'-0"
 COLOR CODE: WHITE
 K-FACTOR = 56



LEGEND
 1. GROUNDED BUTTERFLY VALVE WITH TAMPER SWITCH NO. 2
 2. GROUNDED CHECK VALVE
 3. CENTRAL DRY PIPE VALVE W/ TRIM MODEL DRY-1
 4. UNI-FLAME FRO DOIL (BY OTHERS)
 5. 2" ANGLE VALVE (MAIN RISER) TO OUTSIDE DISCHARGE (SEE RIF PLAN)
 6. DRI TO FID
 7. FLANKS AIR COMPRESSOR AUTOMATIC DRY-TRIP SWITCH (MAG500WAB)
 8. POTTER LOW AIR PRESSURE SWITCH (PS40-2)
 9. WATER MOTOR GONG (MODEL P-6-1200) (SEE RIF PLAN)
 10. 4" ELECTRIC BELL (MODEL P-6-1200) (SEE RIF PLAN)
 11. 4" STORE FIRE DEPT. CONN. (SEE RIF PLAN)
 12. ENGL COMPRESSOR MODEL 1345-350 3/4HP, 10/220V, SINGLE PHASE
 13. 6 HEAD CAPACITY STORAGE BOX W/ HEAD WRENCH
 14. DRY PIPE VALVE AIR LINE BYPASS W/ LAMP GENE
 15. 4" X 1/2" REDUCING FLANGE
 16. POTTER PS-10 VARIABLE PRESSURE SWITCH
 17. 1/2" BALL VALVE (WATER LINE SHUTOFF) NO.
 18. 1/2" AIR DRY BRP
 19. 4" GROUNDED SWING CHECK VALVE

SYSTEM RISER DETAIL "B"
 NOT TO SCALE

WATER DATA
 STATUTE: 80 PSI
 RESIDUAL: 70 PSI
 FLOW: 1520 GPM
 ELEVATION: 70'-0"
 TIME: 1/20/96
 INFORMATION PROVIDED BY: PORTLAND WATER DISTRICT

NOTE: UNDERGROUND TO BE INSTALLED, TESTED AND FLUSHED BY OTHERS IN ACCORDANCE WITH NFPA 24 (ALL UNDERGROUND PIPING TO BE DONE BY OTHERS) (AS SHOWN BY OTHERS).
PILOT PLAN
 SCALE: NTS

GENERAL NOTES

SPRINKLER SYSTEM INSTALLATION TO COMPLY WITH NFPA PARAGRAPH 11.3 TO BE BLACK STEEL 40 STEEL BRANCH LINE PIPING TO BE BLACK STEEL 40 STEEL JOINED BY MECHANICAL COUPLERS
 MAIN PIPING TO BE SCHEDULE 40 BLACK STEEL WITH MECHANICAL COUPLERS
 DOWNER TO REMOVE SUFFICIENT HEAT IN THE SPRINKLER VALVE ROOMS TO PREVENT FREEZING (NON 40" P")
 SPRINKLER PIPING AND EQUIPMENT (NON 40" P")

DATE	REVISIONS

REQUIRED APPROVALS

OWNER: PETER HOLMES 1
 ARCHITECT: PETER HOLMES 2
 PORTLAND, MAINE

EASTERN FIRE PROTECTION
 PORTLAND, MAINE

CONTACT WITH BIRSP CONSTRUCTION

CONTRACT NO.: 308

DATE: