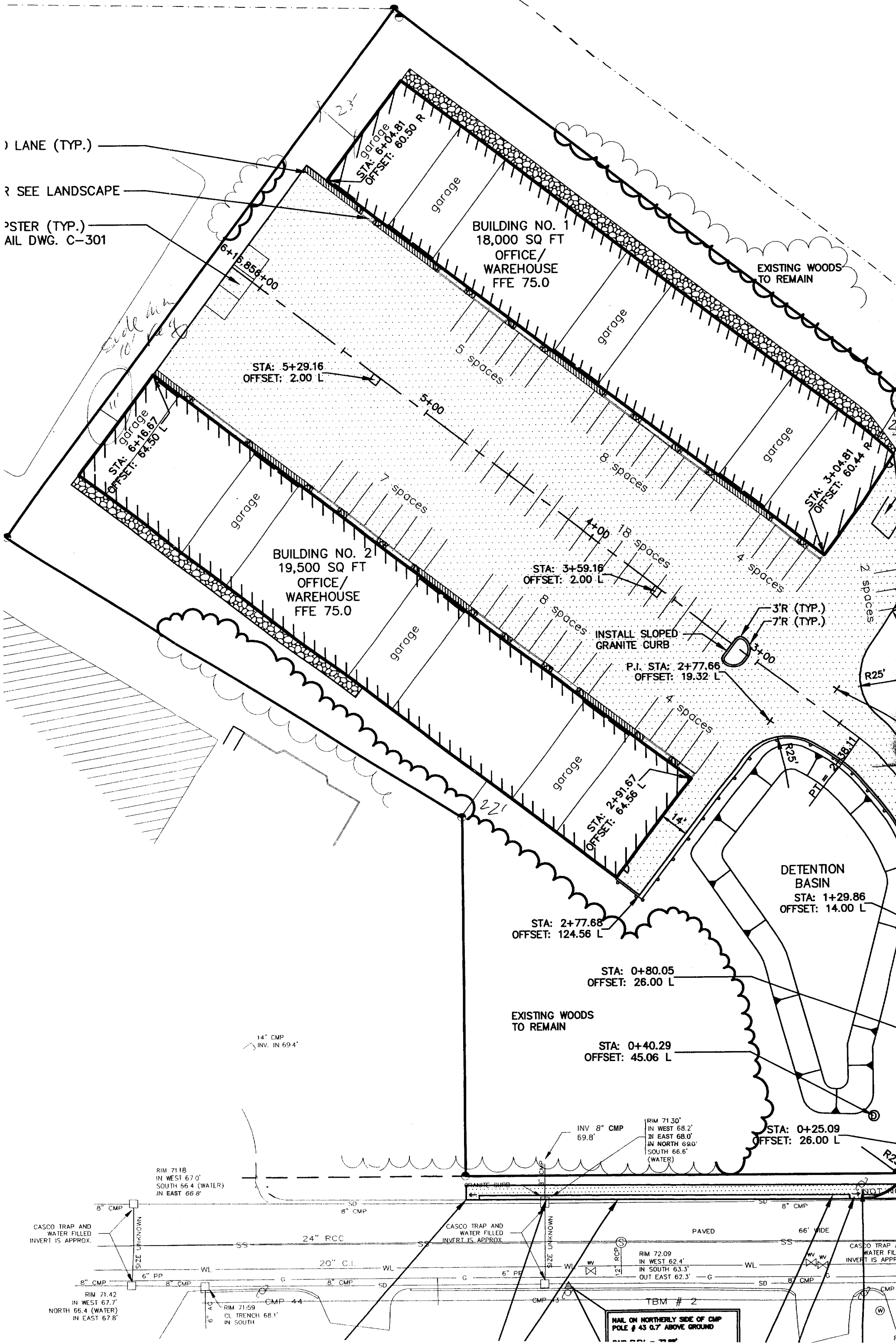


LANE (TYP.)

SEE LANDSCAPE

POSTER (TYP.)  
MAIL DWG. C-301



RIM 71.18  
IN WEST 67.0'  
SOUTH 56.4 (WATER)  
IN EAST 66.8'

14" CMP  
INV. IN 69.4'

INV 8" CMP  
69.8'

RIM 71.30'  
IN WEST 68.2'  
IN EAST 68.0'  
IN NORTH 69.0'  
SOUTH 66.6'  
(WATER)

CASCO TRAP AND  
WATER FILLED  
INVERT IS APPROX.

CASCO TRAP AND  
WATER FILLED  
INVERT IS APPROX.

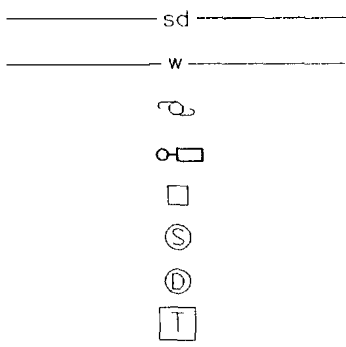
CASCO TRAP A  
WATER FILL  
INVERT IS APPROX.

RIM 71.42  
IN WEST 67.7'  
NORTH 66.4 (WATER)  
IN EAST 67.8'

RIM 71.59  
CL TRENCH 68.1'  
IN SOUTH

RIM 72.09  
IN WEST 62.4'  
IN SOUTH 63.3'  
OUT EAST 62.3'

TBM # 2  
NAIL ON NORTHERLY SIDE OF CMP  
POLE # 43 0.7' ABOVE GROUND



STORM DRAIN  
 WATER LINE  
 UTILITY POLE  
 LIGHT POLE  
 CATCH BASIN  
 SANITARY MANHOLE  
 DRAIN MANHOLE  
 TRANSFORMER

**GENERAL NOTES:**

1. A HANDICAP SPACE SHALL BE INCORPORATED INTO THE PARKING FOR EACH BUILDING.
2. THE CITY OF PORTLAND STANDARD DETAILS SHALL BE USED FOR ALL WORK PERFORMED IN THE CITY RIGHT OF WAY.
3. SIGNAGE FOR THE PROPOSED FACILITY SHALL MEET ALL CITY STANDARDS.
4. THE ENTIRE SITE SHALL BE DEVELOPED AND/OR MAINTAINED AS DEPICTED ON THE SITE PLAN. APPROVAL OF THE PLANNING AUTHORITY OR PLANNING BOARD SHALL BE REQUIRED FOR ANY ALTERATION TO OR DEVIATION FROM THE APPROVED SITE PLAN, INCLUDING, WITHOUT LIMITATION: TOPOGRAPHY, DRAINAGE, LANDSCAPING, RETENTION OF WOODED OR LAWN AREAS, ACCESS SIZE, LOCATION AND SURFACING OF PARKING AREAS AND LOCATION AND SIZE OF BUILDINGS.
5. SIDEWALK AND GRASS ESPLANADE TO COMPLY WITH CITY OF PORTLAND STANDARDS FOR BITUMINOUS SIDEWALK CONSTRUCTION.

4  
8  
7  
18  
4  
8  
5  
2

56 PKG SPACES SHOWN

304B032

CITY OF PORTLAND  
 APPROVED SITE PLAN  
 Subject to Dept. Conditions  
 Date of Approval: 11/25/03

Marge  
 received 2/27/04

ELD BOOK #	DESIGN: AAH	PROJECT:	<b>COMMERCIAL DEVELOPMENT</b>	
FIELD BOOK PAGE	DRAWN: AAH	424 Warren Ave., Portland, ME 04103		
FLAT FILE DEX NUMBER	CHKD: WSD	<b>SITE LAYOUT PLAN</b>		
PROJECT DIR.	DATE: December 2002	PROJ. NO.	02-28101	REV.
DRAWING NAME	SCALE: 1" = 40'	DWG. NO.	C-101	C