

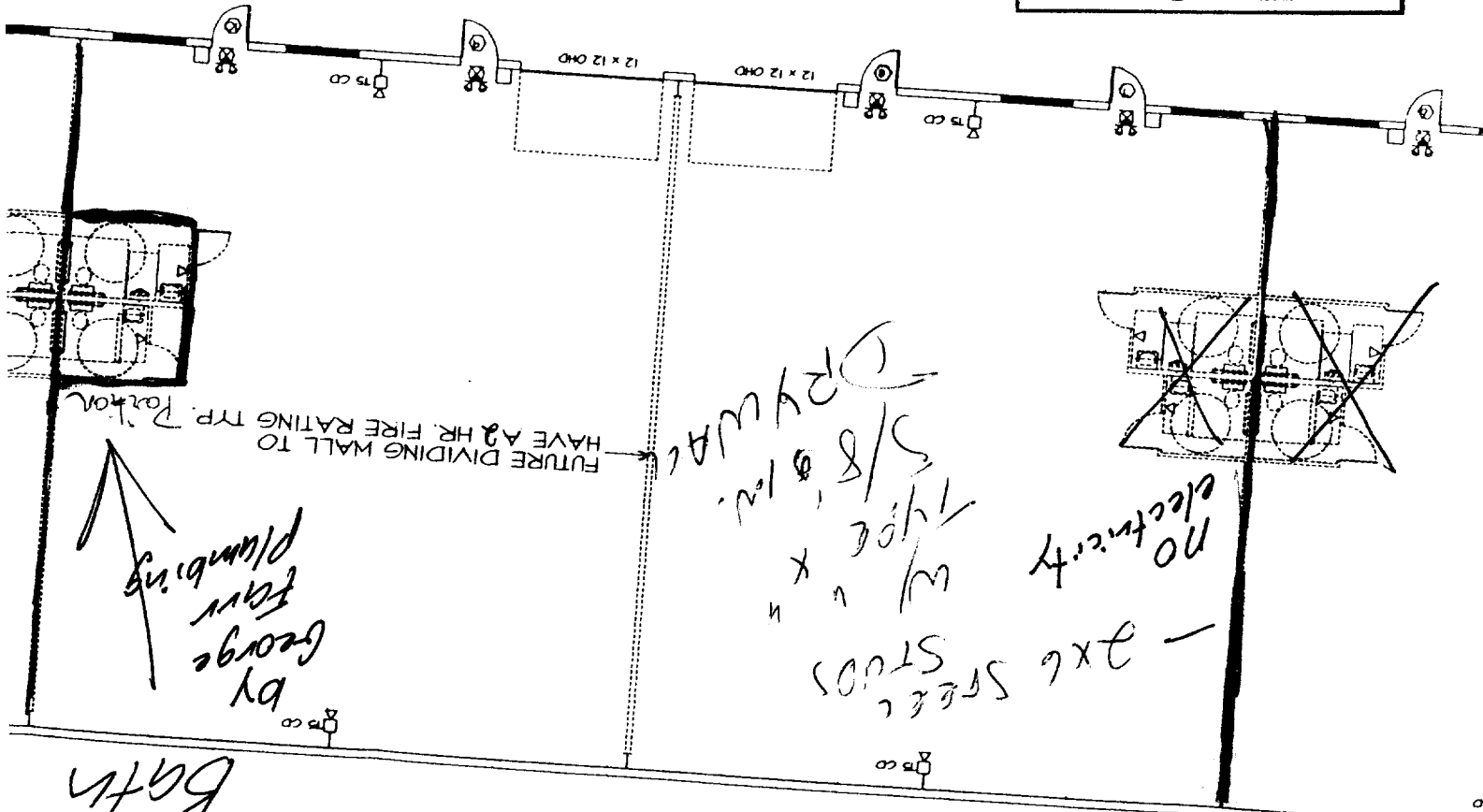
10 3000

175 WATT METAL HALIDE U.N.O.

soot

DEPT. OF BUILDING INSPECTION  
CITY OF PORTLAND, ME  
DEC 16 2004  
RECEIVED

FLOOR PLAN - 1' = 15'



FUTURE DIVIDING WALL TO HAVE A 2 HR. FIRE RATING TRP. RATION

DRYWALL  
Type "X"  
5/8" joist  
w/ studs

no electricity

2x6 steel

by George for plumbing

Bath

Wall

529 Warren Ave.  
Peter Holmes 878-2181

325