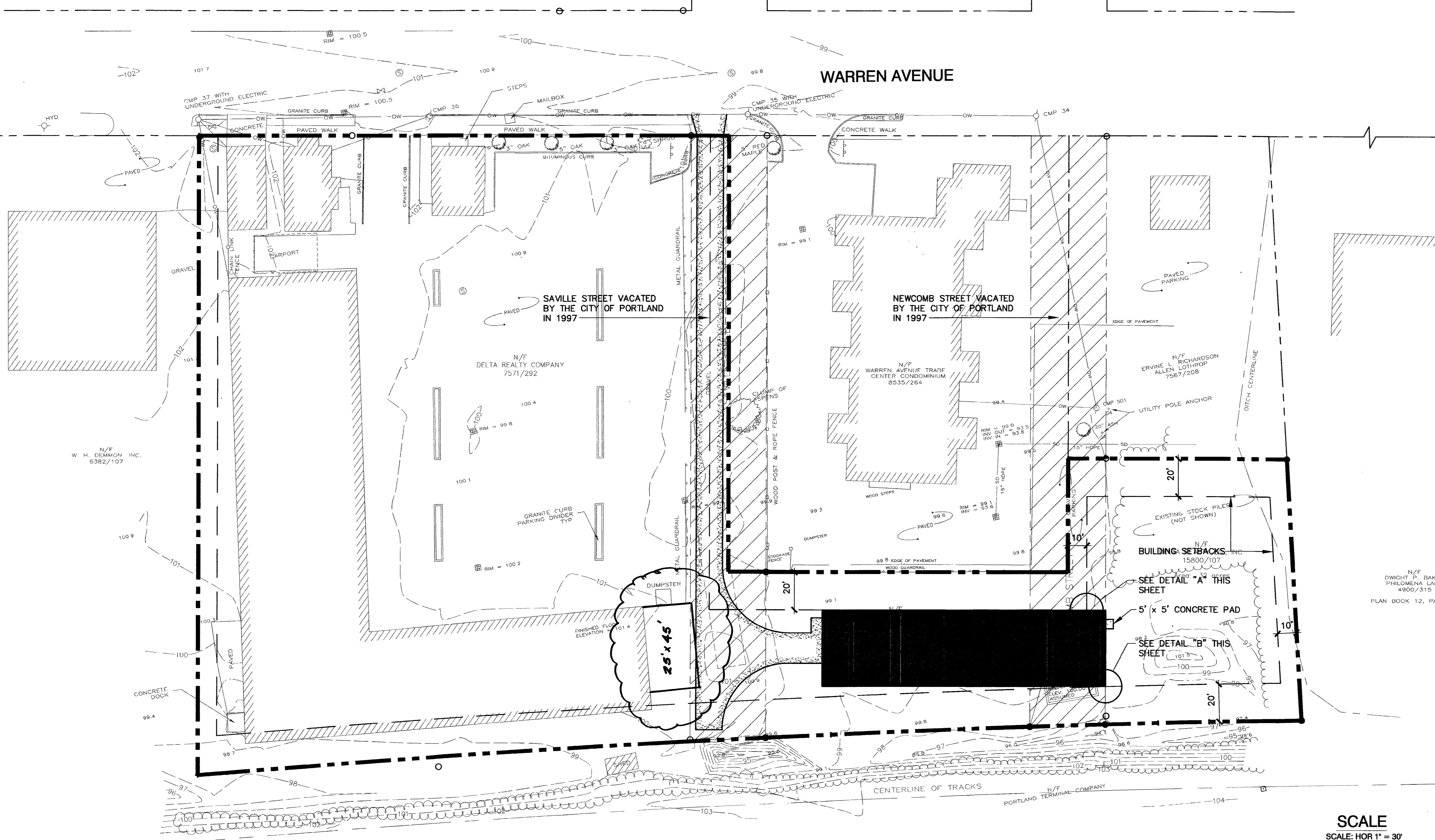
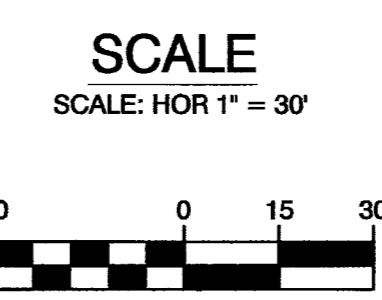


NORTH

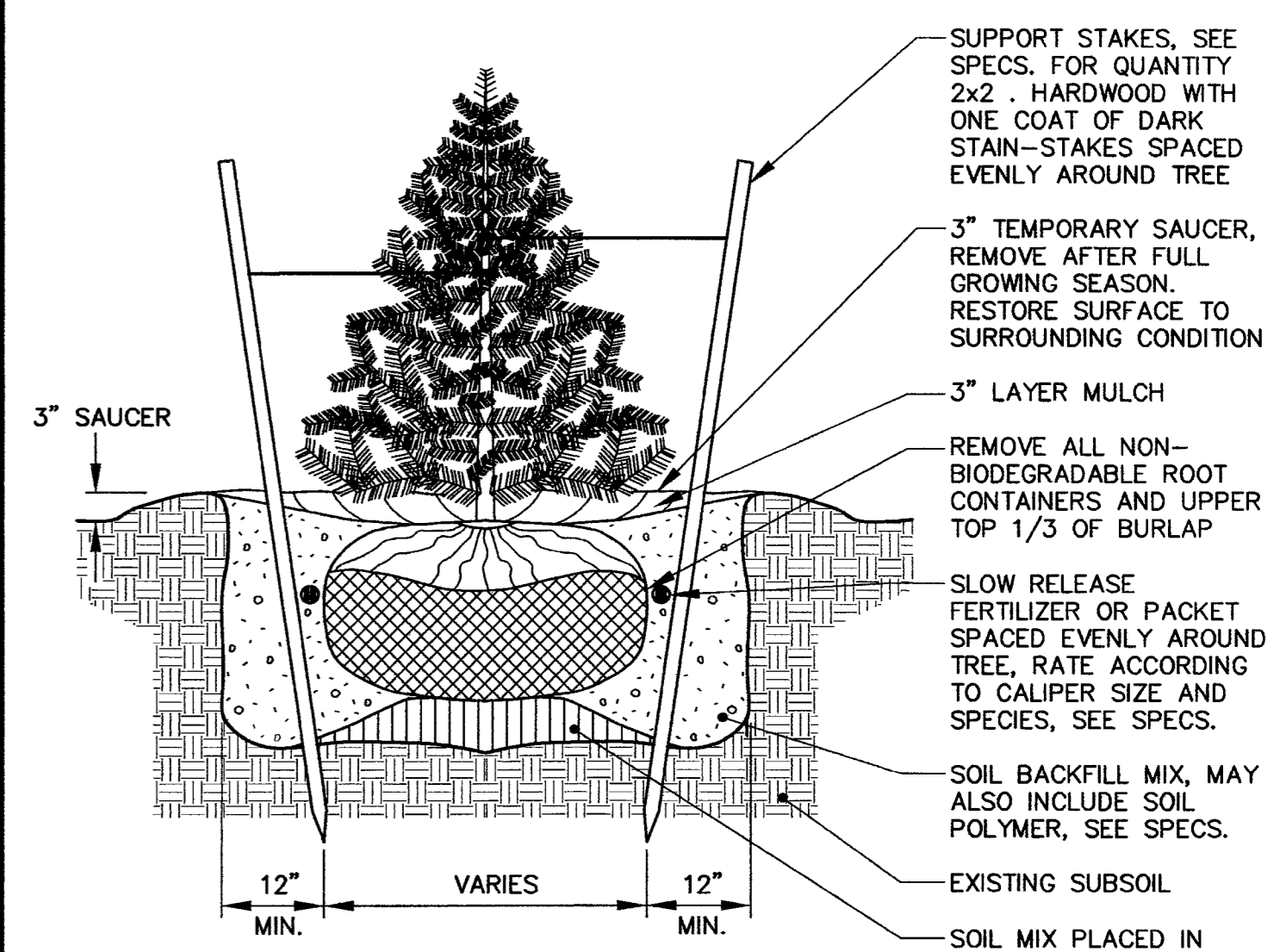


OVERALL SITE PLAN
SCALE: 1" = 30'



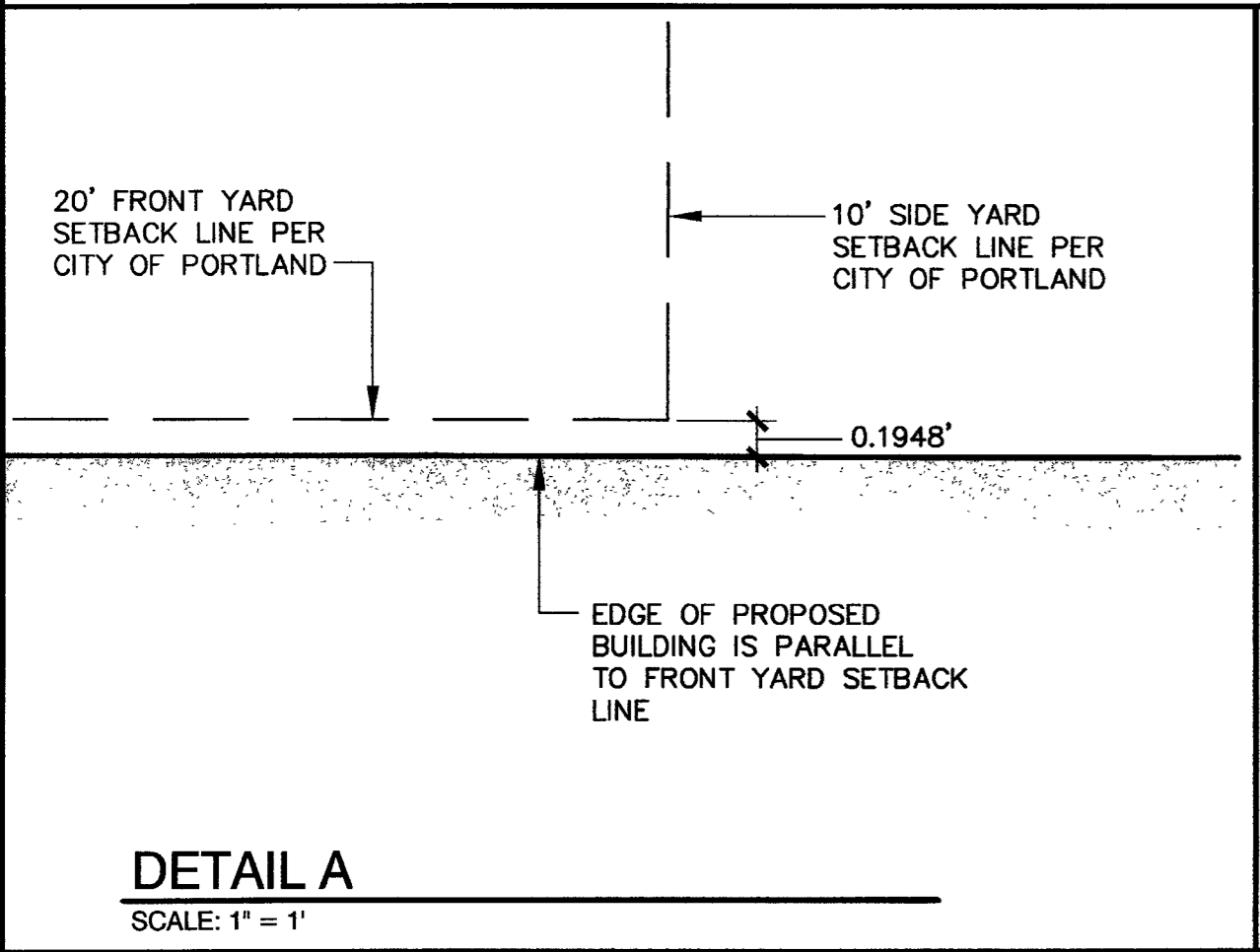
GENERAL NOTES

1. EXISTING SOILS ARE BgB - BELGRADE
2. NO WATER OR SANITARY SERVICES TO BE PROVIDED TO THE PROPOSED STRUCTURE.

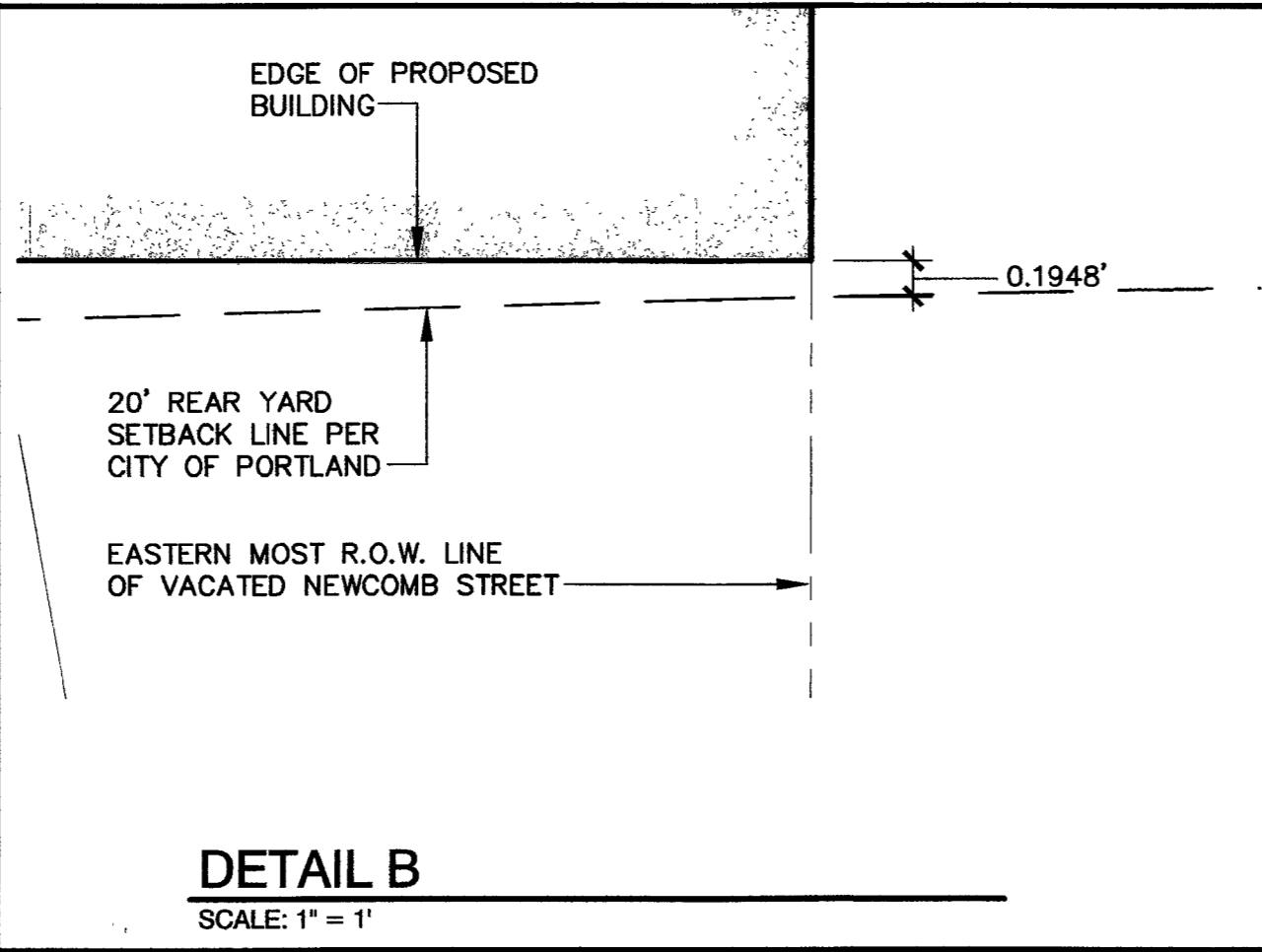


- NOTES:**
1. NEVER CUT OUT CENTRAL LEADER, PRUNE OUT BROKEN, DEAD, OR CONFLICTING BRANCHES
 2. SEE SPECS. FOR ADDITIONAL REQUIREMENTS
 3. TREE GUYS SHALL BE GUYING CHAIN, WEB STRAPPING OR TIE WIRE, RUBBER HOSE AND TURNBUCKLES

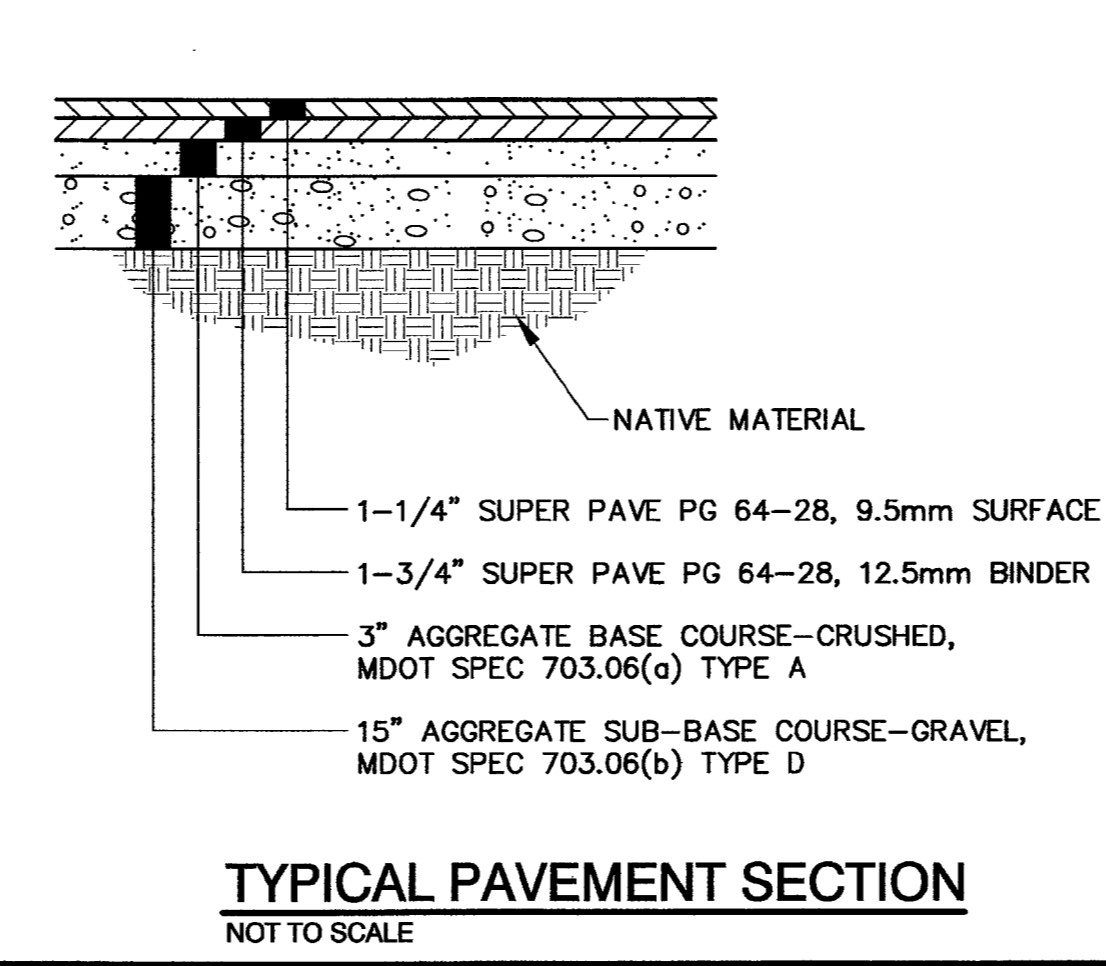
EVERGREEN TREE PLANTING & STAKING DETAIL
NOT TO SCALE



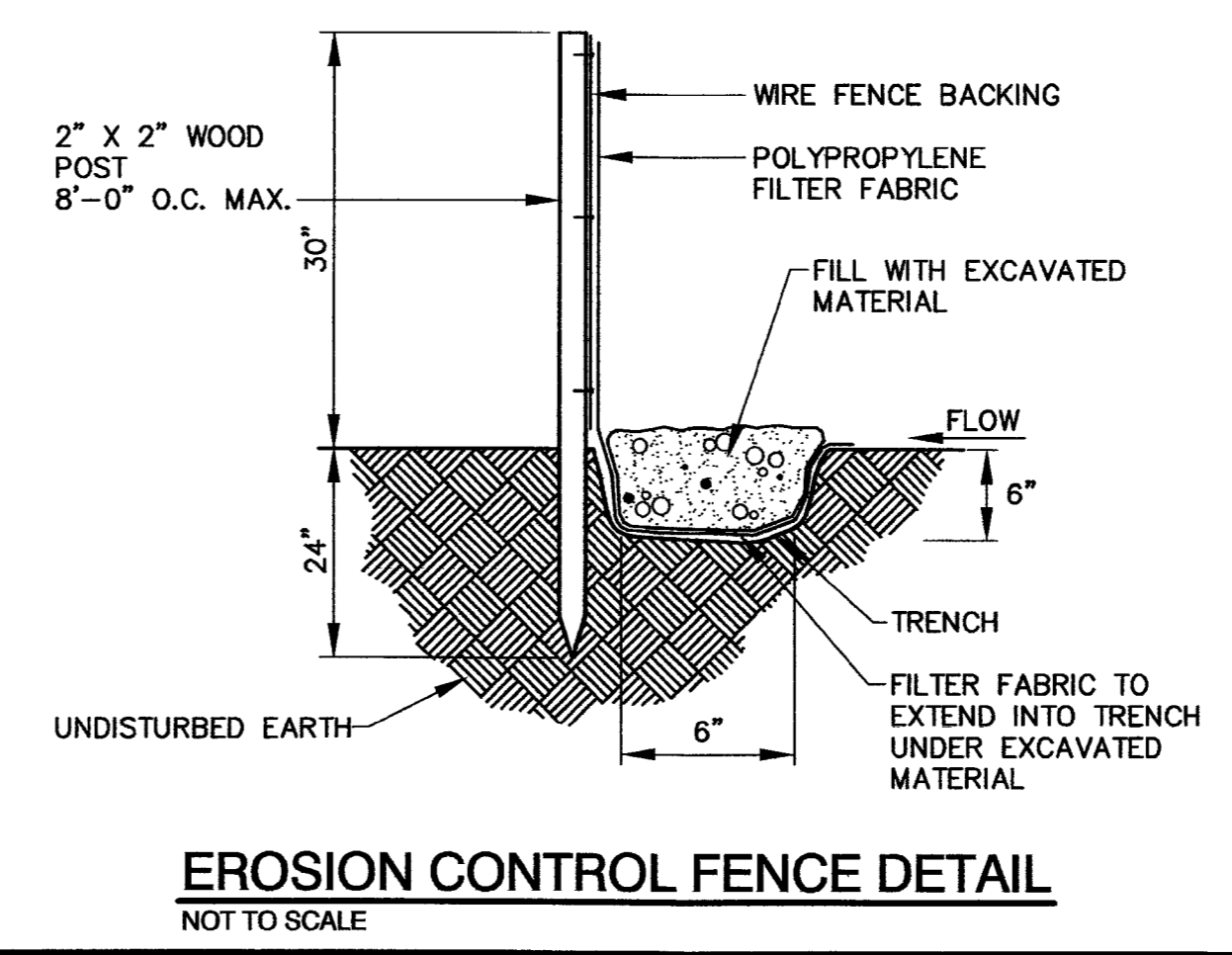
DETAIL A
SCALE: 1" = 1'



DETAIL B
SCALE: 1" = 1'

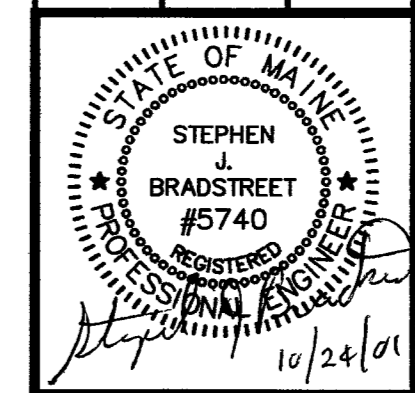


TYPICAL PAVEMENT SECTION
NOT TO SCALE



EROSION CONTROL FENCE DETAIL
NOT TO SCALE

B	SJB	10/09/01	ISSUED FOR: FINAL APPROVAL	655_C-100
A	SJB	09/21/01	ISSUED FOR: CITY REVIEW	655_C-100
REV.	BY	DATE	STATUS	CAD NO.



DELTA REALTY
DSI STORAGE FACILITY
WARREN AVENUE

OVERALL SITE PLAN
AND DETAILS

EER Environmental Engineering & Restoration, Inc. 222 St. John Street, Suite 314 Portland, Maine 04102	DESIGN BY: SJB DRAWN BY: JAR CHECKED BY: SJB DATE: 08/08/01 JOB NO: 655 SCALE: AS NOTED C-100 SHEET 1 OF 2
--	---