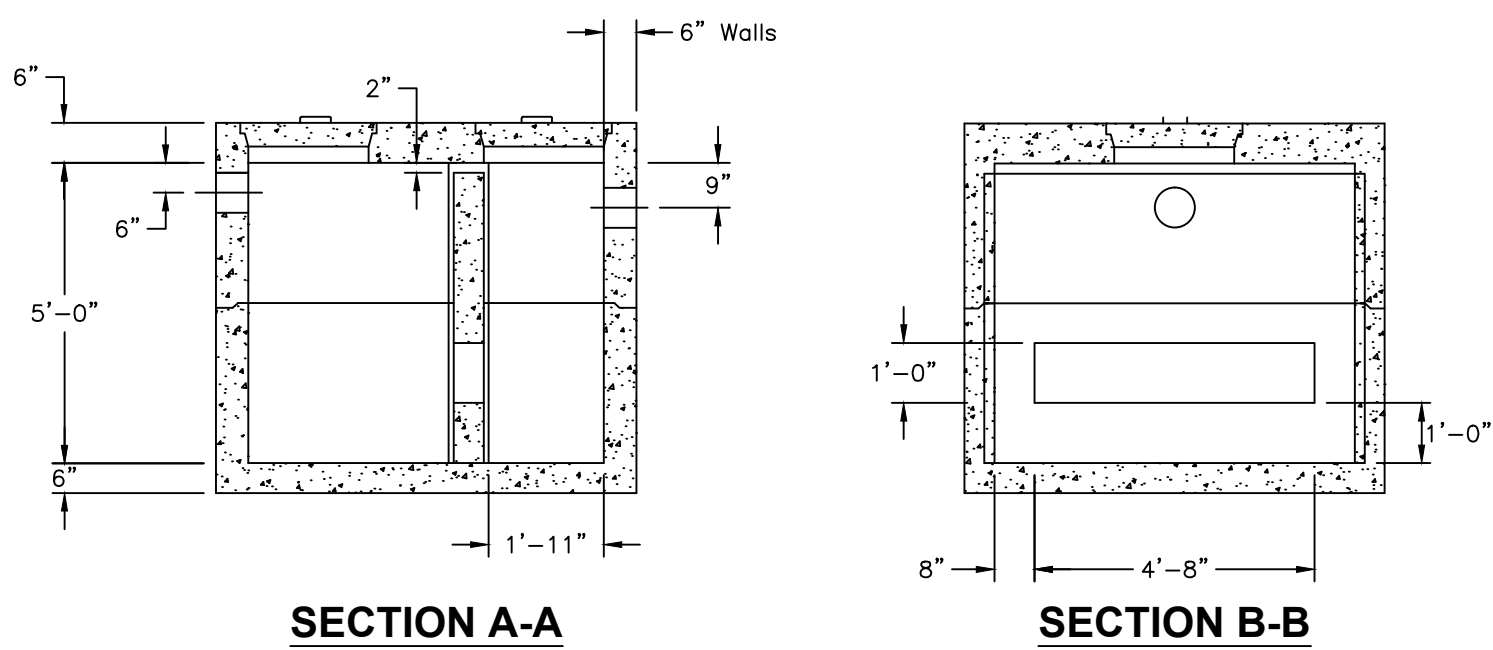
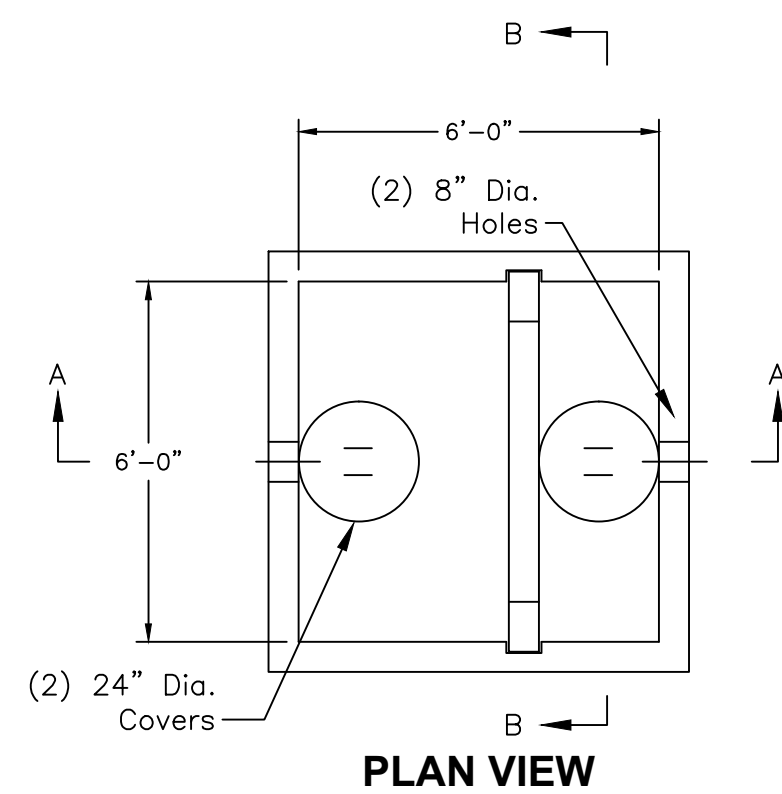


**ISOMETRIC VIEW**



**NOTES:**

- Concrete: 5,000 P.S.I.  
Minimum Strength @ 28 Days
- Steel Reinforcement- ASTM A-615,  
Grade 60.
- Cover to Steel-1" Minimum
- Tanks are Designed to Meet ASTM  
C858 and ACI 318 with AASHTO  
HS-20 Loading
- Earth Cover-0 to 5 Feet  
Minimum
- Construction Joint-Sealed with  
1" Dia. Butyl Rubber or Equivalent
- Approx. Wt. Top Pc. = 6.3 Tons  
Approx. Wt. Bottom Pc. = 6.3 Tons
- This Print is an Example of an O/W  
Separator and is not Designed for  
Specific Performance Ratings.  
Openings can be Modified for  
Specific Project Requirements.

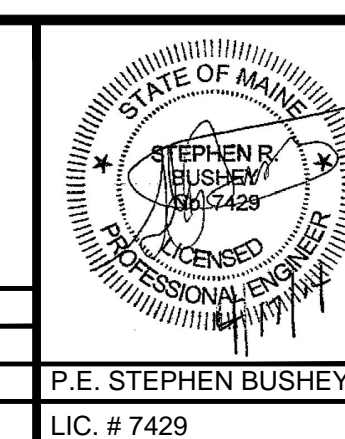


**6'-0" x 6'-0" x 5'-0" I.D.  
Oil/Water Separator  
1,000 Gallon Capacity**

**(A) OIL AND WATER SEPARATOR DETAIL**  
N.T.S.

**PRELIMINARY - NOT FOR CONSTRUCTION**

| REV | DATE     | DESCRIPTION                   |
|-----|----------|-------------------------------|
| 2   | 04.17.14 | FINAL PLAN SUBMISSION TO CITY |
| 1   | 02.10.14 | SUBMITTED TO CITY OF PORTLAND |



|             |  |
|-------------|--|
| PROJECT     | PH WARREN AVENUE, LLC<br>COMMERCIAL SITE<br>421 WARREN AVENUE                          |
| SHEET TITLE | <b>DETAILS</b>   |
| CLIENT      | PH WARREN AVENUE, LLC<br>C/O PETER HOLMES<br>12 WILDWOOD LANE<br>SCARBOROUGH, ME 04074 |

|                         |  |   |  |
|-------------------------|--|---|--|
| <b>FST</b><br>ENGINEERS |  | <b>FAY, SPOFFORD &amp; THORNDIKE, INC.</b><br>ENGINEERS • PLANNERS • SCIENTISTS |  |
| DRAWN: CMW              |  | DATE: NOVEMBER 2013   |  |
| DESIGNED: SRB           |  | SCALE: AS NOTED   |  |
| CHECKED: SRB            |  | JOB NO. SP-M104   |  |
| FILE NAME: SP-M104-DET  |  | SHEET   |  |
| LIC. # 7429             |  | <b>C-6.3</b>  |  |