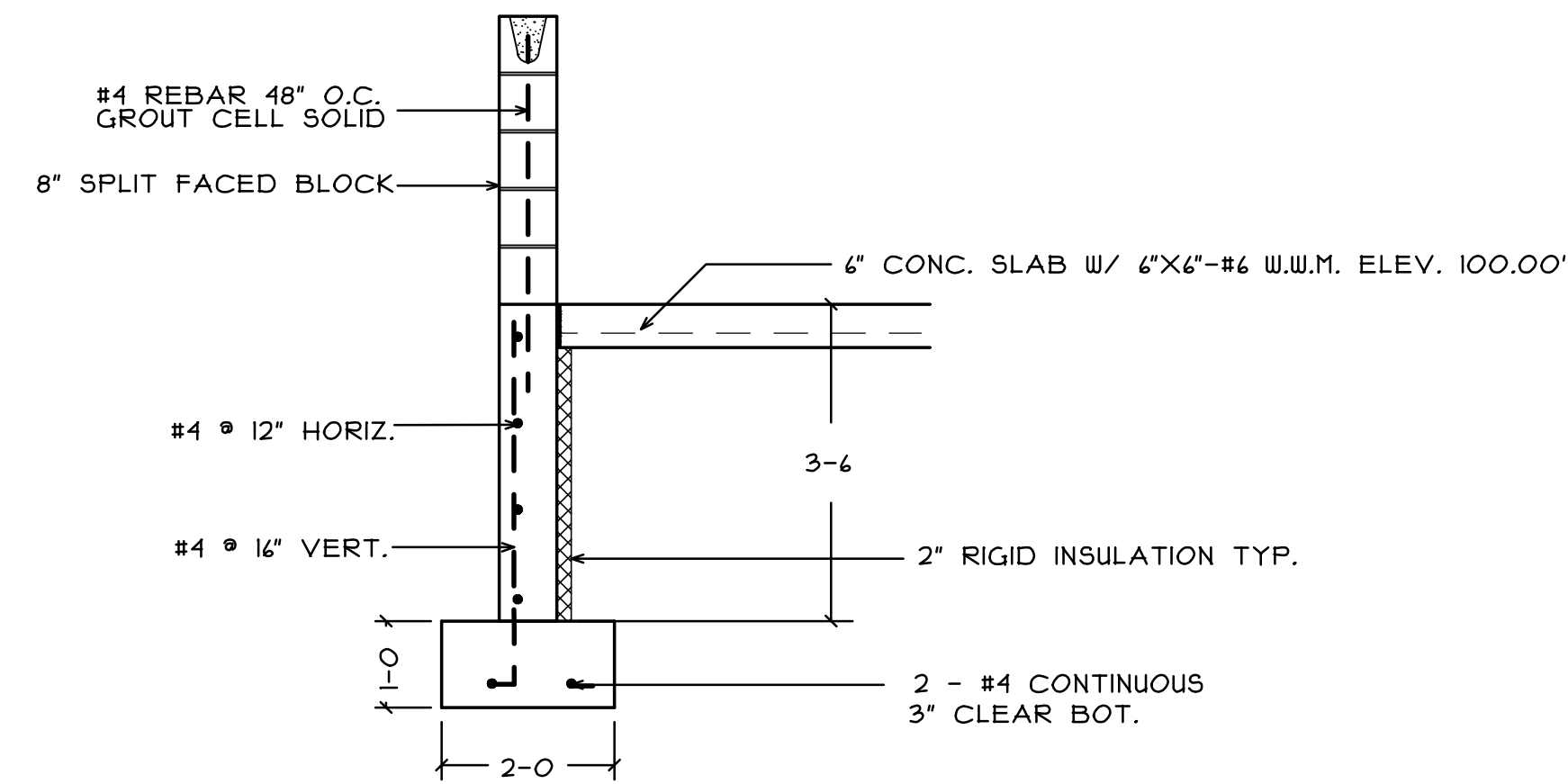
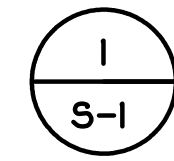


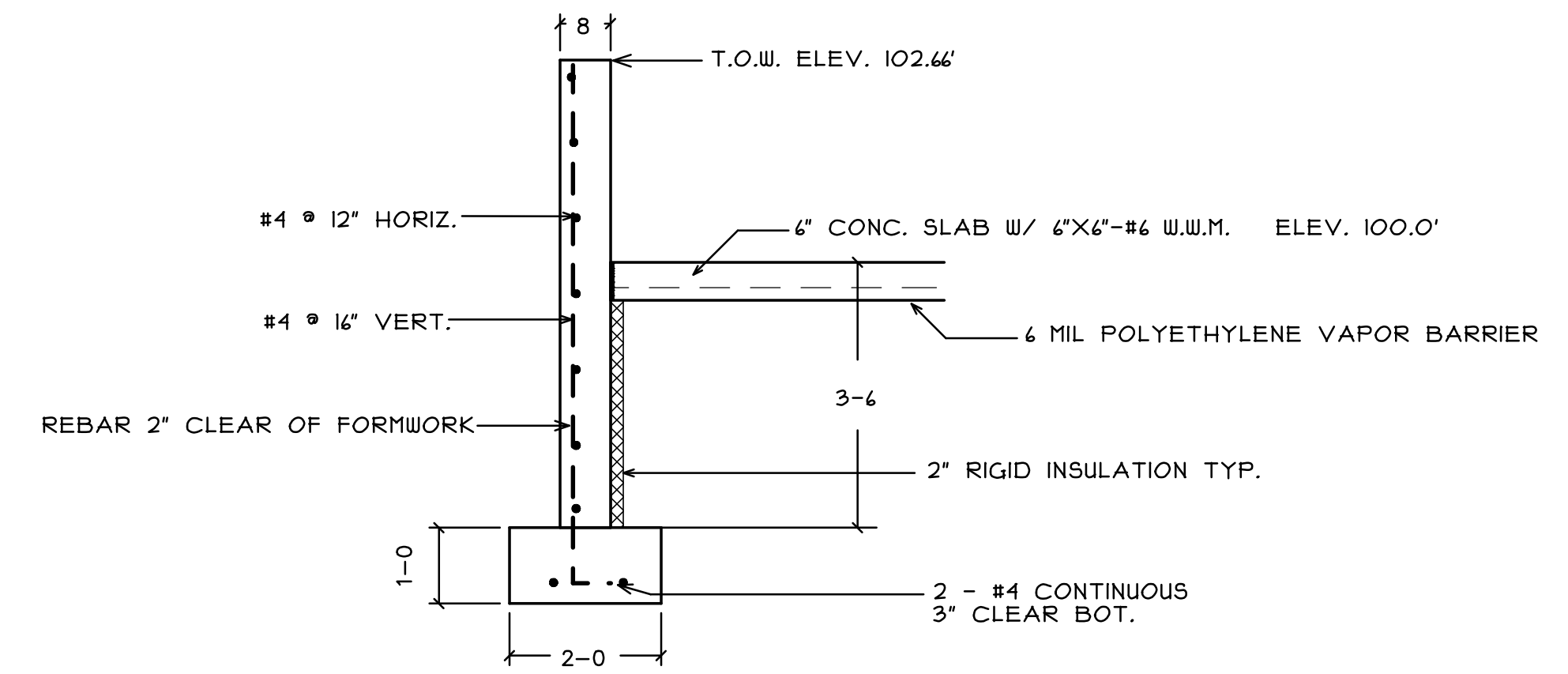
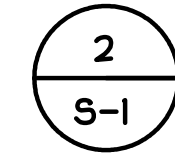
SECTION THRU DOOR OPENINGS

SCALE: 1/2"=1'-0"



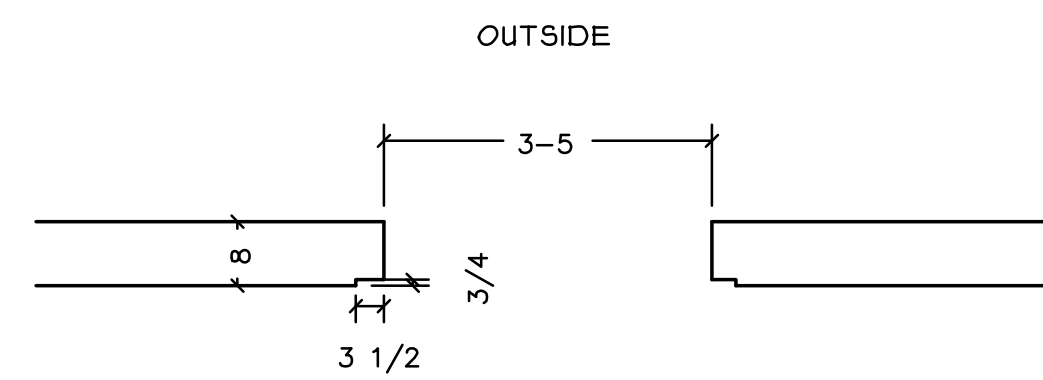
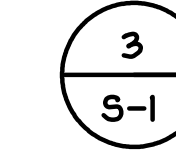
WALL SECTION

SCALE: 1/2"=1'-0"

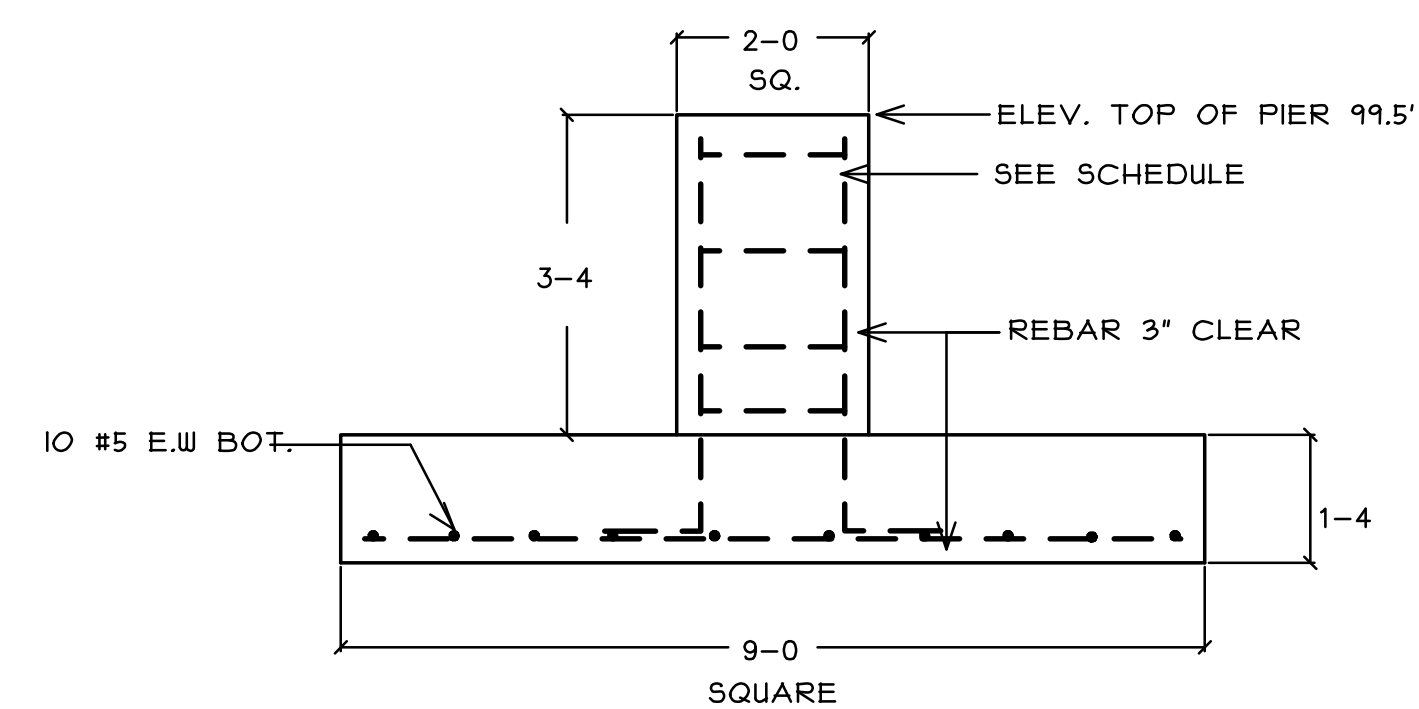


WALL SECTION

SCALE: 1/2"=1'-0"

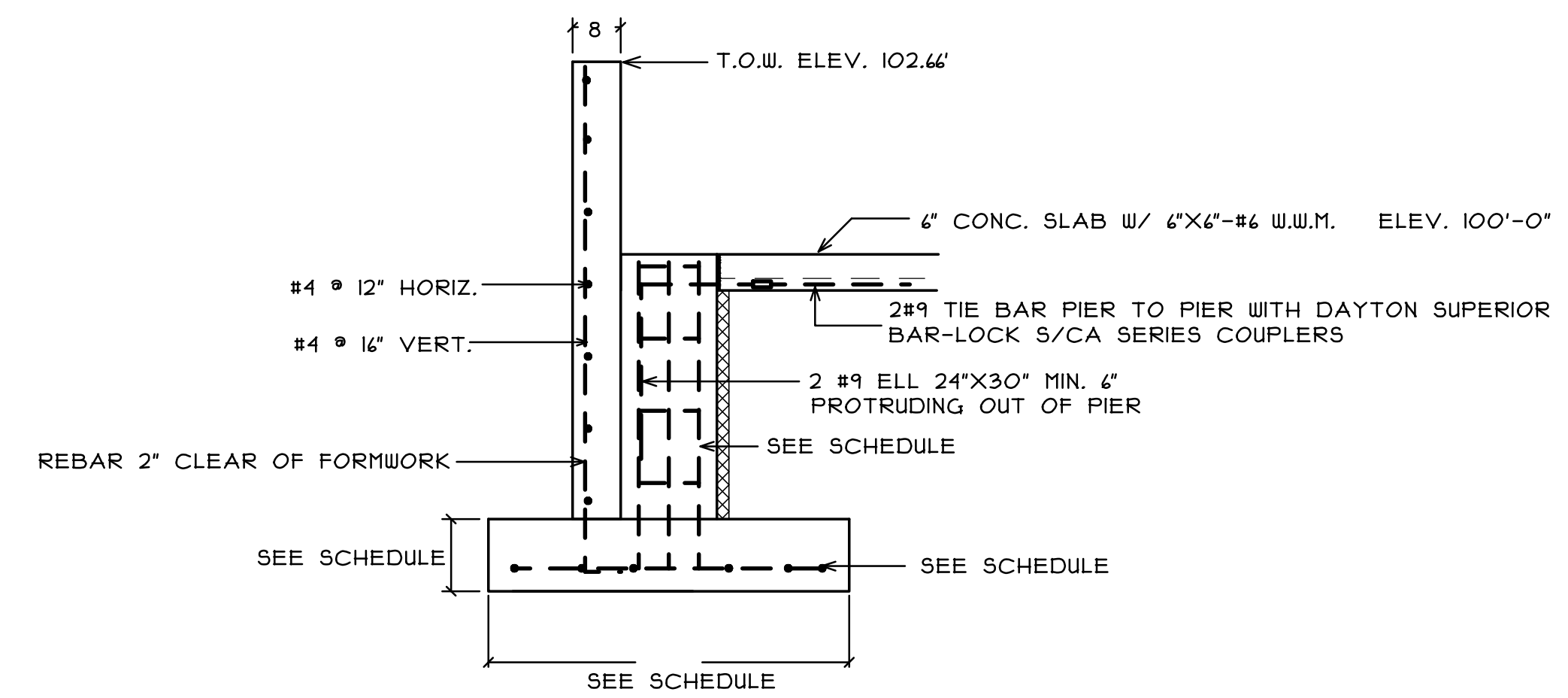


TYPICAL PASS DOOR OPENING  
@  
KICKER WALL



TYP. INT. FOOTING & PIER

SCALE: 1/2"=1'-0"



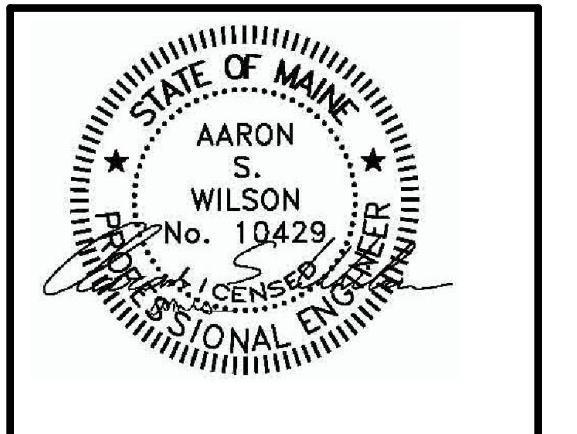
WALL SECTION @ PIERS  
5A THRU 12A, 5G THRU 12G



BISKUP CONSTRUCTION, INC.  
16 DANIELLE DRIVE  
WINDHAM, MAINE 04062  
TEL. (207) 892-9800  
FAX. (207) 892-9895

WWW.BISKUPCONSTRUCTION.COM

CONSULTANT  
ASSOCIATED DESIGN  
PARTNERS INC.  
30 Lightfoot Street  
Falmouth, Maine 04105  
Office: (207) 878-1750  
Fax: (207) 878-1750  
E-mail: adp@adpengineering.com



PROJECT:  
P.H. WARREN AVENUE, LLC  
421 WARREN AVENUE  
PORTLAND, MAINE

REVISIONS	
DATE	DESCRIPTION

DATE: 8/5/2014  
SCALE: 1/2" = 1'-0"  
DESIGNER: AW  
CHECKED BY: JB  
© COPYRIGHT  
BISKUP CONSTRUCTION, INC.

SHEET TITLE  
FOUNDATION  
DETAILS

SHEET NUMBER  
S-2  
SHEET 2 OF 2