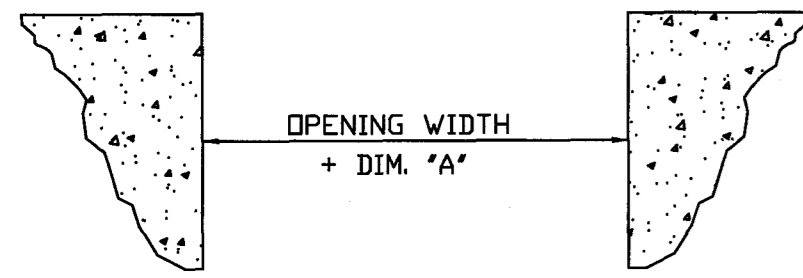


ELEVATION VIEW OF SUGGESTED DETAIL FOR OPENINGS WITH JAMBS TO FINISH FLOOR IN THE PRESENCE OF A RAISED FOUNDATION WALL.



- *A' = 4 1/2' FOR PRE-ASSEMBLED PERSONNEL DOORS
- = 5 1/2' FOR KNOCK-DOWN PERSONNEL DOORS
- = 7 1/2' FOR OPENINGS WITH COLD-ROLLED JAMBS
- = 8' FOR OPENINGS WITH STRUCTURAL JAMBS

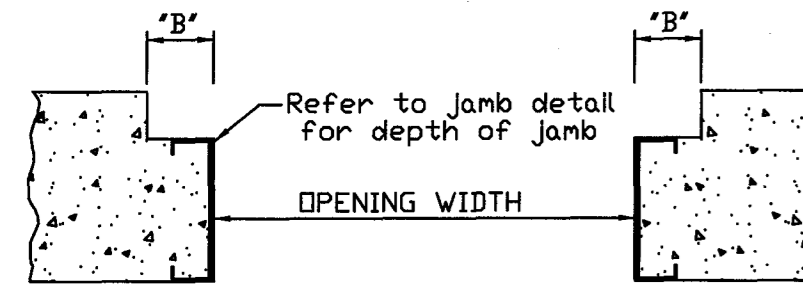
ROUGH OPENING SIZES ABOVE ARE FOR PASS DOORS AND FRAMED OPENINGS FURNISHED BY PII.

FOUNDATION ENGINEER TO VERIFY WITH BUILDER ALL DOOR TYPES AND ASSOCIATED ROUGH OPENING SIZES.

FOR DOORS NOT FURNISHED BY PII, CONSULT DOOR SUPPLIER FOR OPENING DETAILS.

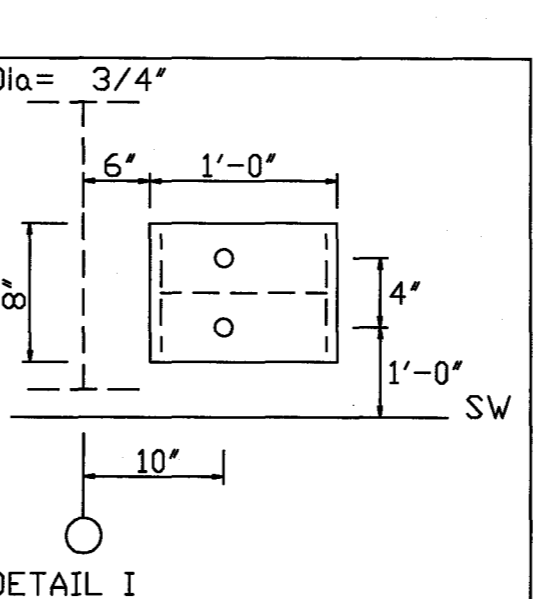
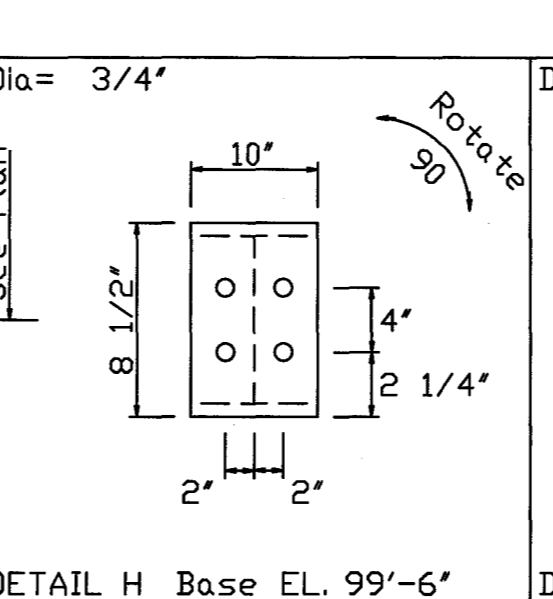
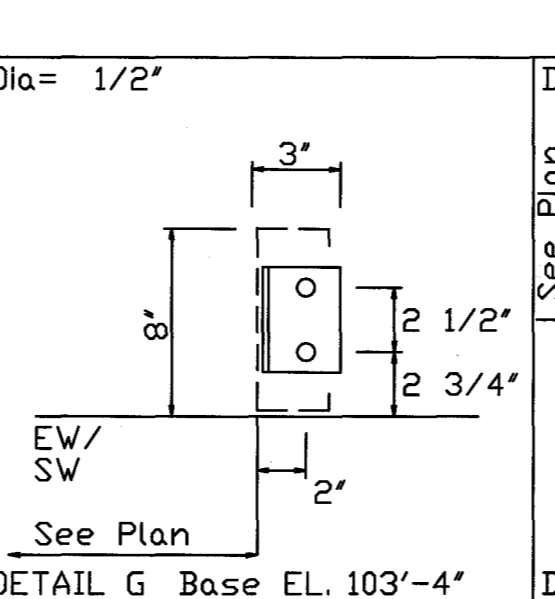
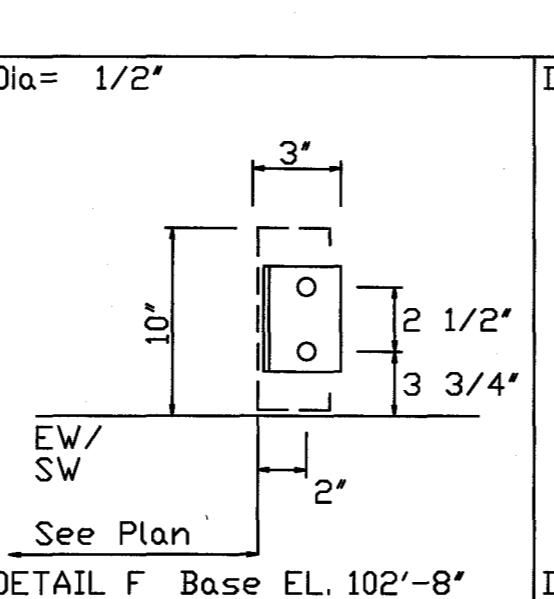
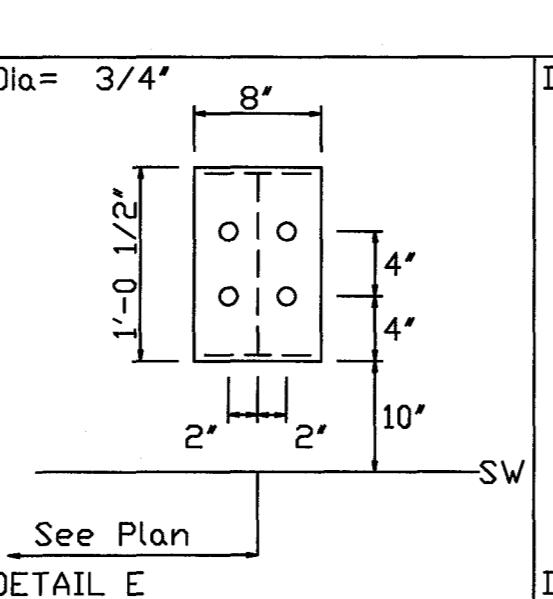
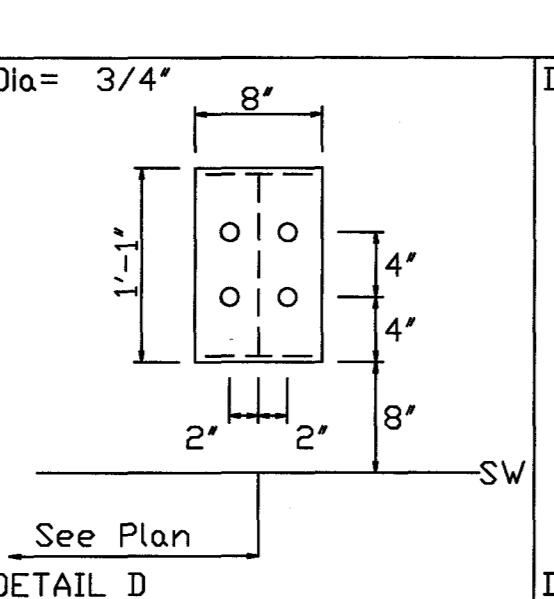
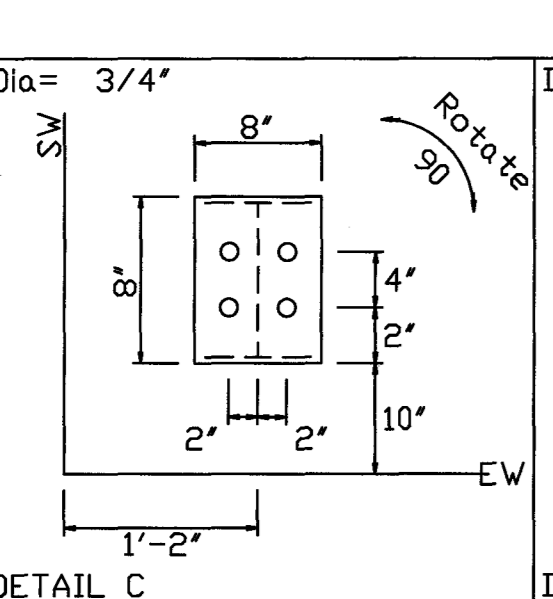
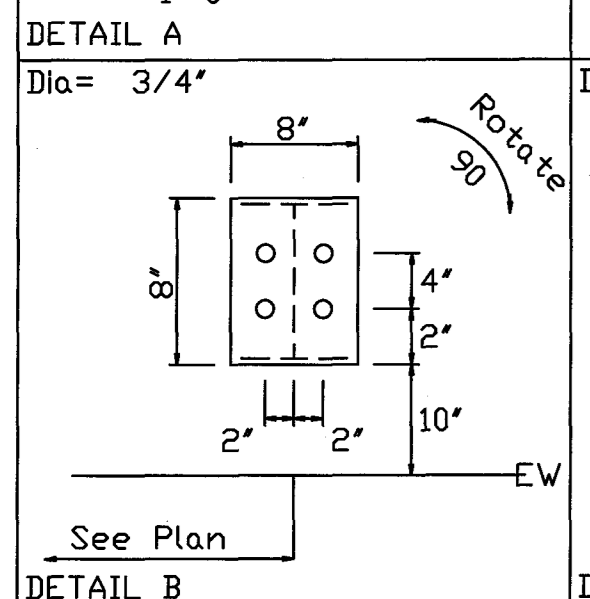
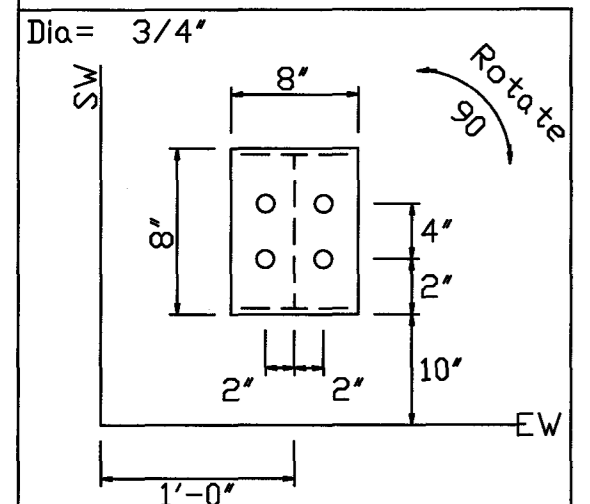
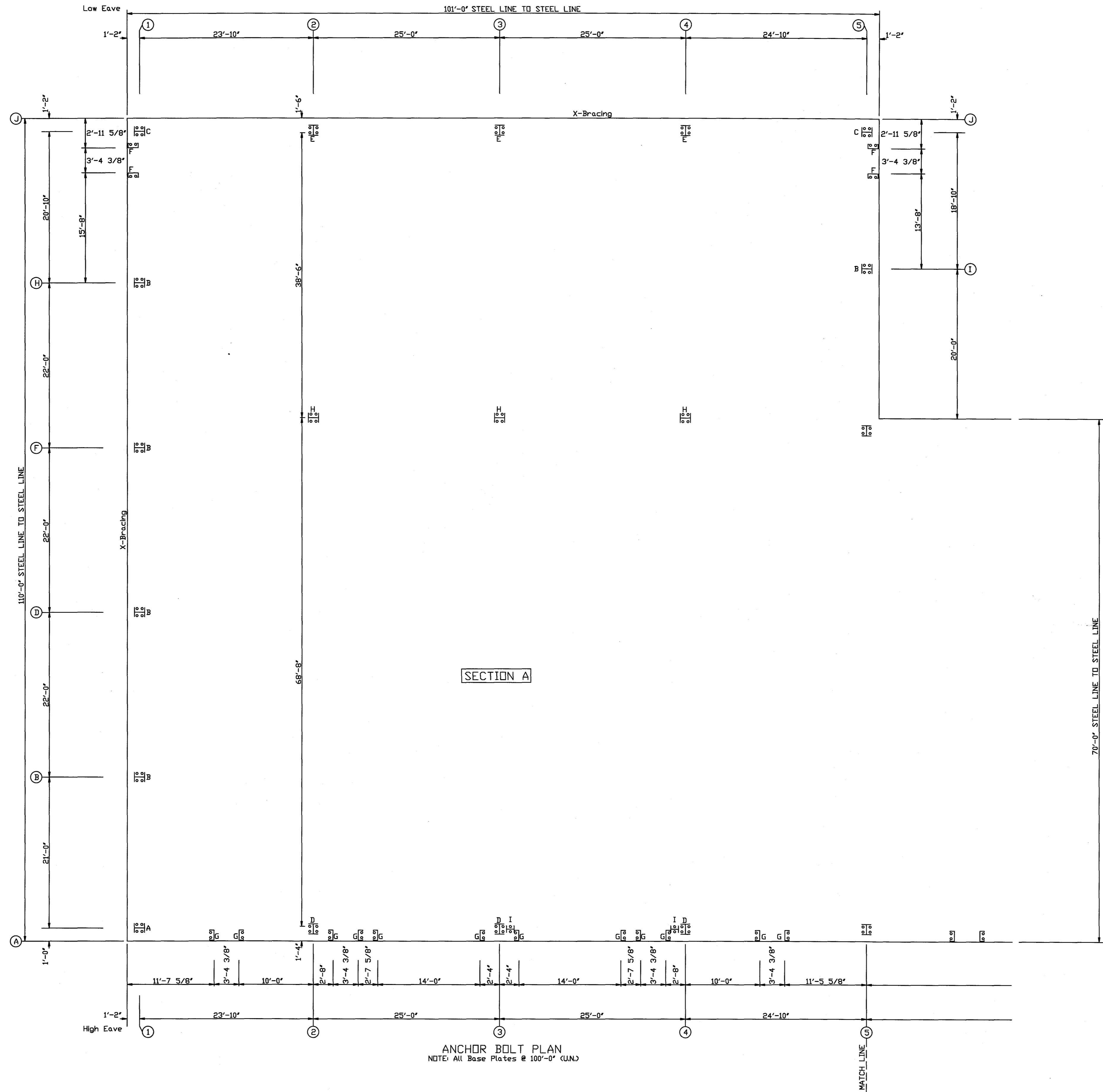
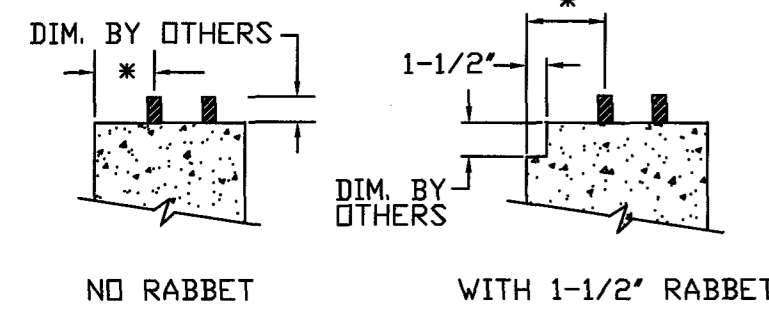
CLEARANCES SHOWN ARE MINIMUM REQUIRED FOR BASE CLIP. THERE MAY BE SMALL VOIDS BETWEEN JAMB FLANGES AND FOUNDATION WALL.

PLAN VIEW OF SUGGESTED DETAIL FOR FRAMED OPENINGS WITH JAMBS TO THE TOP OF A RAISED FOUNDATION WALL.



*B' = NOTCH FOR DOOR TRACK NOT BY PACKAGE INDUSTRIES, INC. SEE MANUFACTURER RECOMMENDATIONS

* See Column Base Details



REV.	DESCRIPTION	DATE	DRAFT	ENG.
3				
2				
1	REVISED PROJECT ADDRESS AND SITE CLASS TYPE FROM 'D' TO 'E'	7/29/14	TMZ	ZRM
	INITIAL DRAWING RELEASED FOR CONSTRUCTION			CURRENT REVISION: 1
PACKAGE STEEL SYSTEMS, INC.		Biskup Construction Inc.		
PROJECT	Holmes #3	ANCHOR BOLT PLAN & DETAILS (SECTION A)		
ID	1407-012	DESIGN: ZRM	DESIGN CHECK: ZRM	
PROJECT	421 Warren Ave.	DRAFT: TMZ	DRAFT CHECK: TMZ	
ADDRESS	Portland, ME 04103	DATE: 7/23/14	SCALE: NONE	SHEET: ABLT-1