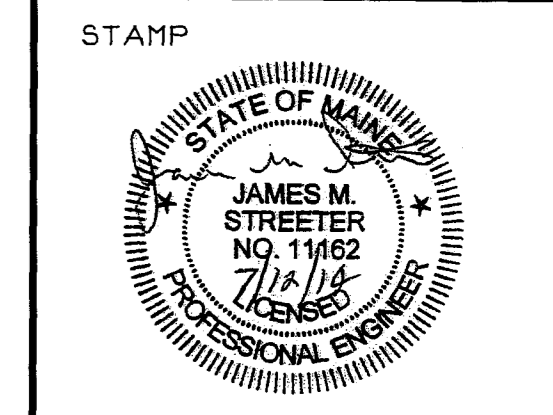




BISKUP CONSTRUCTION, INC.
16 DANIELLE DRIVE
WINDHAM, MAINE 04062
TEL. (207) 892-9800
FAX. (207) 892-9895

WWW.BISKUPCONSTRUCTION.COM



J. M. STREETER
ARCHITECTURAL
ENGINEER
44 GARSOE DRIVE
PORTLAND, MAINE 04103 (207) 797-3093

PROJECT:
P.H. WARREN AVENUE, LLC
421 WARREN AVENUE
PORTLAND, MAINE

REVISIONS	
DATE	DESCRIPTION

DATE: 1/1/2014
SCALE: 3/32" = 1'-0"
DESIGNER: JS
CHECKED BY: JB

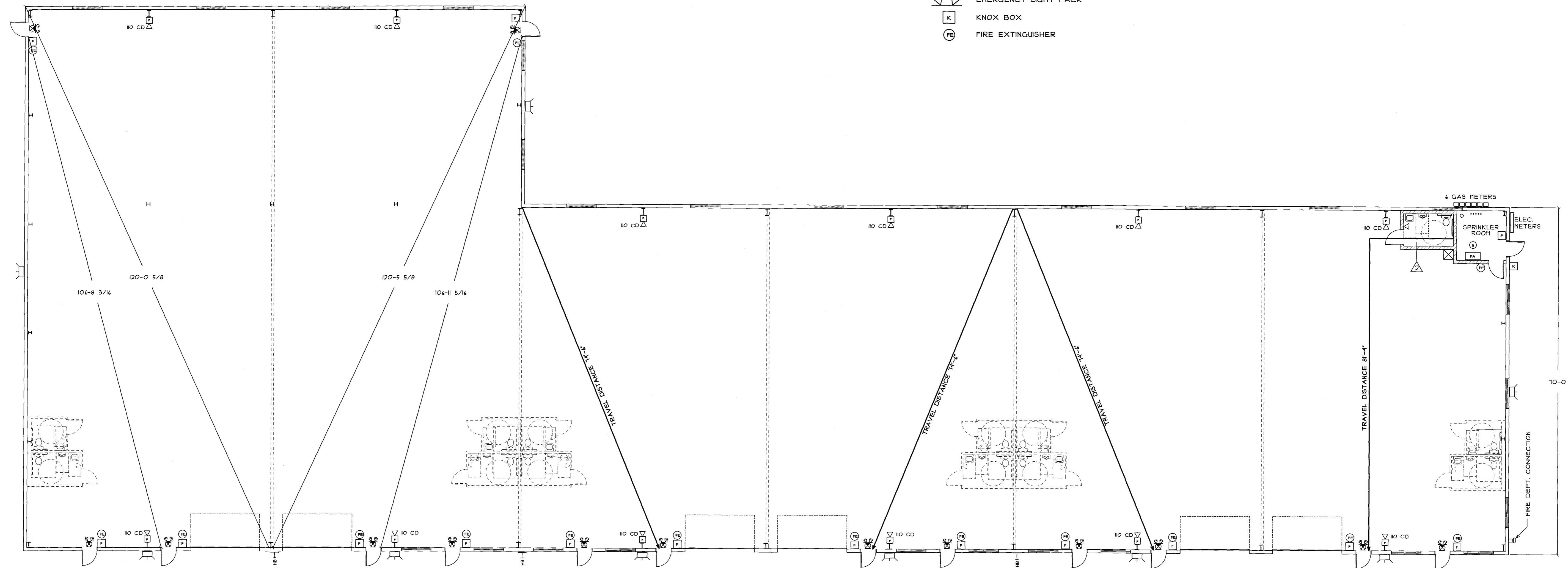
© COPYRIGHT
BISKUP CONSTRUCTION, INC.

SHEET TITLE
LIFE SAFETY PLAN

SHEET NUMBER
A-2
SHEET 2 OF 4

LIFE SAFETY PLAN LEGEND

- MANUAL PULL STATION
- ADA HORN/STROBE
- ADA STROBE ONLY
- ALARM PANEL
- SMOKE DETECTOR
- EXIT SIGN
- EMERGENCY LIGHT PACK
- KNOCK BOX
- FIRE EXTINGUISHER



LIFE SAFETY PLAN
SCALE: 3/32" = 1'-0"

IBC 2009: CODE DATA	
OCCUPANT LOAD - TABLE 1004.1.2	25,040/100 S.F. PER PERSON = 251
USE GROUP CLASSIFICATION - SECTION 304.2	F-1
TYPE OF CONSTRUCTION - TABLE 601	V-B
ACTUAL BUILDING AREA	25,040 S.F.
BUILDING AREA LIMITATION - TABLE 503	8,500 S.F.
STREET FRONTAGE INCREASE - 504.2	NA
AUTOMATIC SPRINKLER SYS. INCREASE - 504.3	25,500 S.F.
ALLOWABLE BUILDING AREA	34,000 S.F.
BUILDING HEIGHT LIMITATION - TABLE 503	1 STORY
ALLOWABLE BUILDING HEIGHT - WITH ALLOWABLE INCREASES	21'-0" 1 STORY
BUILDING HEIGHT	21'-0" 1 STORY
FIRE SUPPRESSION:	DRY SYSTEM (NFPA 13)
FIRE RESISTANT CONSTRUCTION:	
STRUCTURAL FRAME	NA
EXTERIOR BEARING WALLS	NA
INTERIOR BEARING WALLS	NA
EXTERIOR NONBEARING WALLS	NA
FLOOR CONSTRUCTION	FUTURE WALLS 1 HR. RATED
ROOF CONSTRUCTION	NA
STAIR ENCLOSURES	NA
EXIT ACCESS TRAVEL DISTANCE 1016	250' (SPRINKLER SYSTEM)
COMMON PATH OF TRAVEL 1014.3 EXCEPTION 1	100' (SPRINKLER SYSTEM)
MINIMUM NUMBER OF EXITS - TABLE 1021.2	1 100' OR LESS TRAVEL DISTANCE
ACCESSORY USE	NA
FIRE EXTINGUISHERS - TABLE 904.3(1)	2-A, 1 AT EACH EXIT
GENERAL NOTES	PERMIT IS FOR SHELL ONLY

NFPA 101: CODE DATA - 2009 EDITION	
OCCUPANT LOAD - TABLE 1.3.1.2	25,040/100 S.F. PER PERSON = 251
USE GROUP CLASSIFICATION - 401.4.1	GENERAL INDUSTRIAL
TYPE OF CONSTRUCTION - TABLE 8.1	V-1000
ACTUAL BUILDING AREA	25,040 S.F.
BUILDING HEIGHT	21'-0" 1 STORY
FIRE SUPPRESSION:	DRY SYSTEM (NFPA 13)
FIRE RESISTANT CONSTRUCTION:	
STRUCTURAL FRAME	NA
EXTERIOR BEARING WALLS	NA
INTERIOR BEARING WALLS	NA
EXTERIOR NONBEARING WALLS	NA
FLOOR CONSTRUCTION	FUTURE WALLS 1 HR. RATED
ROOF CONSTRUCTION	NA
STAIR ENCLOSURES	NA
EXIT ACCESS TRAVEL DISTANCE - TABLE 40.2.4	250' (SPRINKLER SYSTEM)
COMMON PATH OF TRAVEL - TABLE 40.2.5	100' (SPRINKLER SYSTEM)
MINIMUM NUMBER OF EXITS - TABLE 40.2.4.1.2	1 100' OR LESS TRAVEL DISTANCE
ACCESSORY USE	NA
FIRE EXTINGUISHERS	2-A, 1 AT EACH EXIT
GENERAL NOTES	PERMIT IS FOR SHELL ONLY

NFPA 1: CODE DATA - 2009 EDITION	
OCCUPANT LOAD - TABLE 1.4.8.1.2	25,040/100 S.F. PER PERSON = 251
USE GROUP CLASSIFICATION - SECTION 4.1.1.2	INDUSTRIAL
TYPE OF CONSTRUCTION - TABLE A.1.2.2	V-1000
ACTUAL BUILDING AREA	25,040 S.F.
BUILDING HEIGHT	21'-0" 1 STORY
FIRE SUPPRESSION:	DRY SYSTEM (NFPA 13)
FIRE WALLS & PARTY WALLS	FUTURE WALLS 1 HR. RATED
COMMON PATH OF TRAVEL 14.10.1.4	100' (SPRINKLER SYSTEM)
MINIMUM NUMBER OF EXITS 14.9.1.1 (1)	1 100' OR LESS TRAVEL DISTANCE
FIRE FLOW TABLE 18.4.5.1.2	4250 GPM
FIRE FLOW REDUCTION 18.4.5.2.1	15% OF 4250 = 3188 GPM
FIRE FLOW 18.4.5.2.1	1023 GPM
MINIMUM NUMBER OF HYDRANTS TABLE 1.3	1
MAX. DISTANCE FROM HYDRANT TO STREET FRONTAGE TABLE 1.3	250'
ACTUAL DISTANCE FROM HYDRANT TO STREET FRONTAGE	225'
FIRE EXTINGUISHERS - TABLE 13.4.8.2.1	2-A, 1 AT EACH EXIT
GENERAL NOTES	PERMIT IS FOR SHELL ONLY