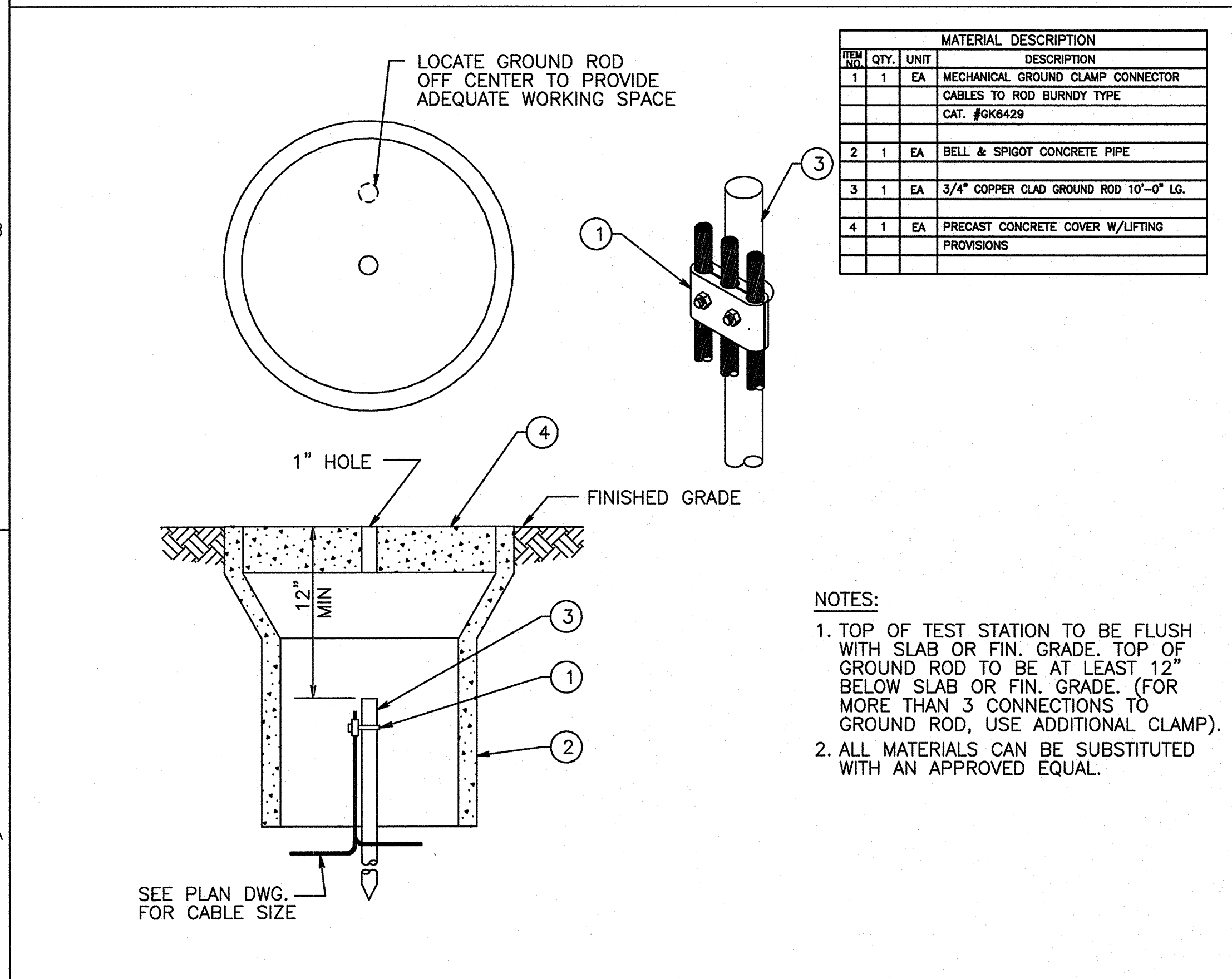


- NOTE:**
- BUS BAR SHALL BE MOUNTED / LOCATED AT BOTTOM ENCLOSURE TO ALLOW FOR RF CABLE INSTALLATION. 15" MINIMUM BENDING RADIUS FOR 1 5/8" CABLE AND 10" MINIMUM BENDING RADIUS FOR 7/8" RF CABLE AT THE TRANSMITTER MODULE AND STATION.
 - THE ENCLOSURE SHALL BE INSTALLED OVER THE BUS BAR TO CONCEAL IT AT THE GENERATOR MODULE.
 - THE RF BULK HEAD "BOOT" IS NOT REQUIRED FOR THIS APPLICATION DUE THE THE ADDITIONAL PROTECTION GIVEN BY THE ENCLOSURE.
 - SEAL ALL OPENINGS AT CABLES AND COPPER TAPE ENCLOSURE MATERIAL - 12 GAUGE STEEL PAINTED ANSI 61 "LIGHT GRAY".

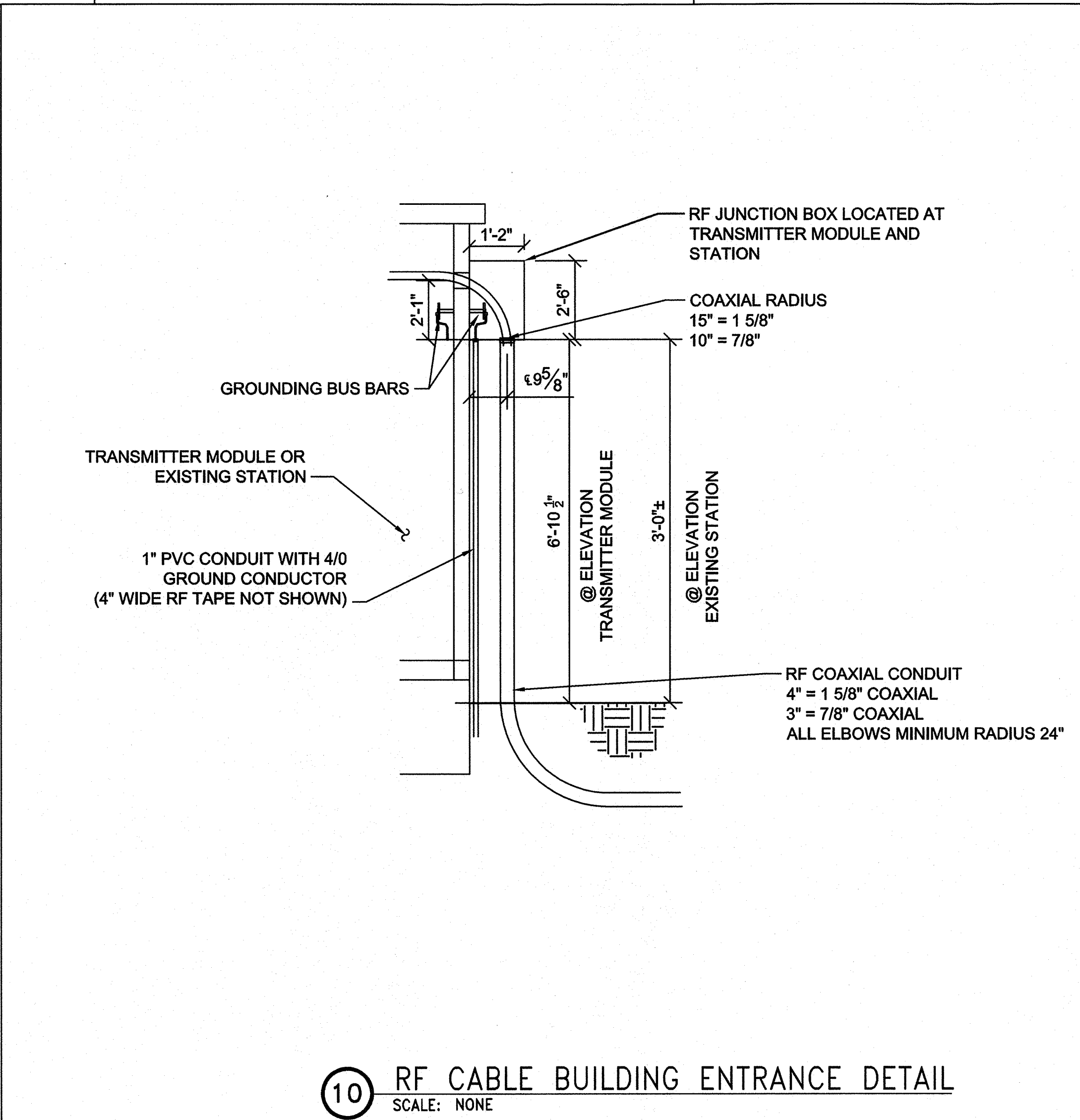
9 4" GROUND BUS BAR / RF PENETRATION ENCLOSURE
SCALE: NONE



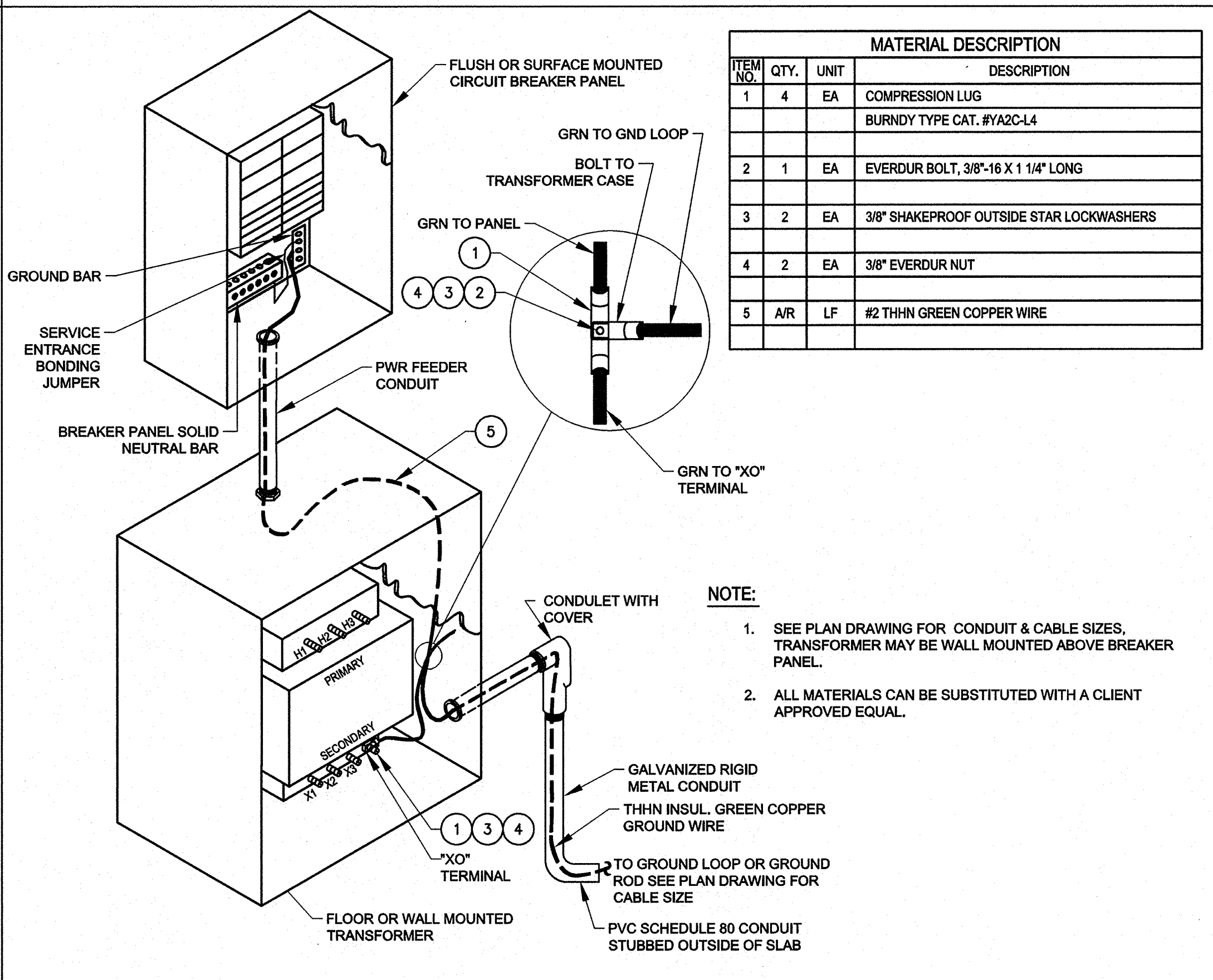
ITEM NO.	QTY.	UNIT	DESCRIPTION
1	1	EA	MECHANICAL GROUND CLAMP CONNECTOR CABLES TO ROD BURNDY TYPE CAT. #GK6429
2	1	EA	BELL & SPIGOT CONCRETE PIPE
3	1	EA	3/4" COPPER CLAD GROUND ROD 10'-0" LG.
4	1	EA	PRECAST CONCRETE COVER W/LIFTING PROVISIONS

- NOTES:**
- TOP OF TEST STATION TO BE FLUSH WITH SLAB OR FIN. GRADE. TOP OF GROUND ROD TO BE AT LEAST 12" BELOW SLAB OR FIN. GRADE (FOR MORE THAN 3 CONNECTIONS TO GROUND ROD, USE ADDITIONAL CLAMP).
 - ALL MATERIALS CAN BE SUBSTITUTED WITH AN APPROVED EQUAL.

11 GROUND TEST WELL
SCALE: NONE



10 RF CABLE BUILDING ENTRANCE DETAIL
SCALE: NONE



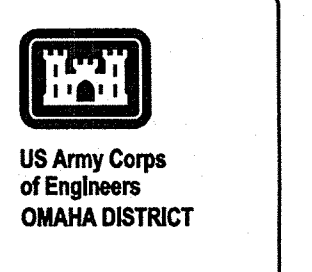
ITEM NO.	QTY.	UNIT	DESCRIPTION
1	4	EA	COMPRESSION LUG
2	1	EA	EVERDUR BOLT, 3/8"-16 X 1 1/4" LONG
3	2	EA	3/8" SHAKEPROOF OUTSIDE STAR LOCKWASHERS
4	2	EA	3/8" EVERDUR NUT
5	A/R	LF	#2 THIN GREEN COPPER WIRE

- NOTE:**
- SEE PLAN DRAWING FOR CONDUIT & CABLE SIZES. TRANSFORMER MAY BE WALL MOUNTED ABOVE BREAKER PANEL.
 - ALL MATERIALS CAN BE SUBSTITUTED WITH A CLIENT APPROVED EQUAL.

12 TRANSFORMER & PWR PANEL GROUNDING
SCALE: NONE

NOTES:

- ALL ELECTRICAL INSTALLATIONS SHALL BE IN ACCORDANCE WITH THE 2011 EDITION OF THE NATIONAL ELECTRICAL CODE (NEC NFPA 70) AND THE OCCUPATIONAL SAFETY AND HEALTH ACT (OSHA) AND PROJECT SPECIFICATIONS AND APPLICABLE CODES AND STANDARDS.



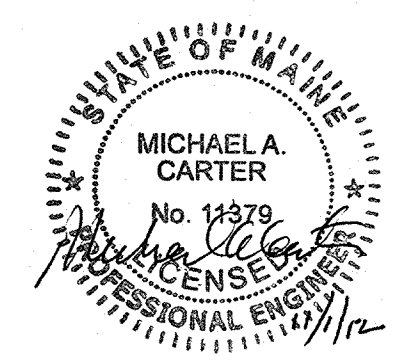
Project Manager	
DC Reviewer	
Structural	
Mechanical	
Plumbing	
Electrical	
Civil	

ISSUED FOR CONSTRUCTION	0	11/7/12	Agend
Description	Mark	Date	Agend

Designed by	SDJ
Checked by	TCG
Drawn by	SDJ
Reviewed by	TCG
Date:	2012

FEMA
KBR
63 SOUTH NOVA STREET, SUITE 200
MOBILE, AL 36602
PHONE: (251) 465-7000
FAX: (251) 465-7000
Engineering Services by
KBR Engineering Co., LLC

FEMA EMERGENCY RADIO NETWORK
ON WIGAN PORTLAND, MAINE
**INSTALLATION
DETAILS**



Drawing Number:
E-503