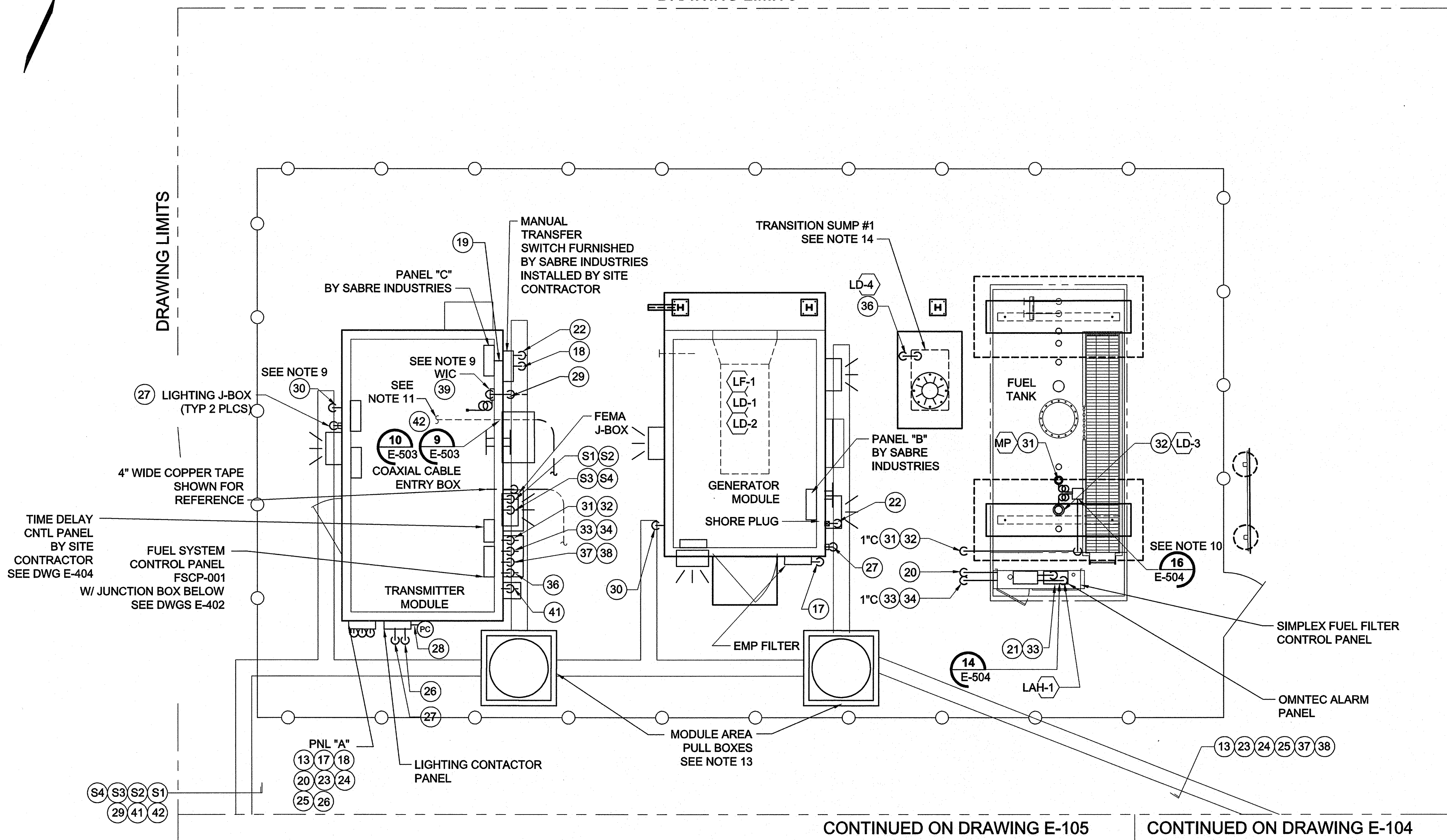
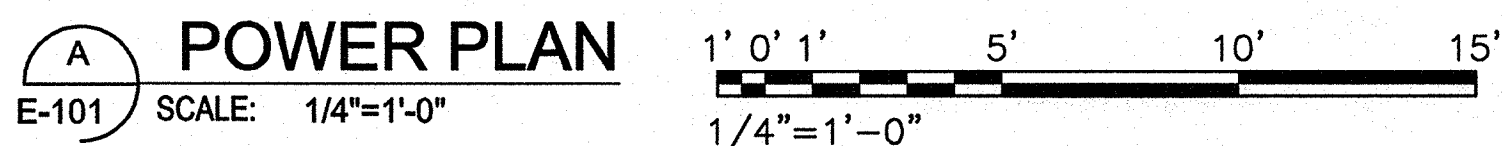


DRAWING LIMITS



CONTINUED ON DRAWING E-105

CONTINUED ON DRAWING E-104



NOTES CONTINUED:

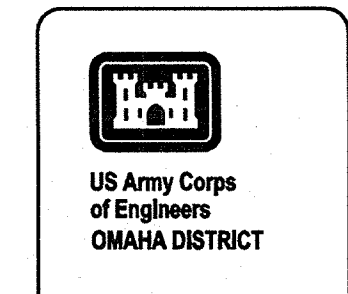
11. CONTRACTOR SHALL INSTALL A COAXIAL EIA FLANGE CONNECTOR (ANDREWS CAT NO. AL5E78-PS) ON THE NEW CABLE WITH THE CABLE END LOCATED ABOVE THE NEW TRANSMITTER CABINET. A MINIMUM OF 12 LF EXCESS CABLE SHALL BE PROVIDED TO FACILITATE CONNECTION WITH THE CABINET DOOR REMOVED.
12. CONTRACTOR SHALL TERMINATE ALL 25 PAIRS OF THE OSP COMMUNICATION CABLE IN THE TRANSMITTER MODULE TO THE PROVIDED PUNCH DOWN BLOCK. ALL WIRING FROM WITHIN THE MODULE TO THE PUNCH DOWN BLOCK IS BY OTHERS. TWO PAIRS OF THE 25 PAIR CABLE SHALL BE IDENTIFIED BY THE CONTRACTOR FOR SIGNALS FROM THE TRANSMITTER MODULE. THE FIRST PAIR IS FOR THE ENDEC PROGRAMMING EQUIPMENT. THE SECOND PAIR WILL SERVE ALL REMAINING DEVICES IN THE TRANSMITTER BUILDING; PHONE OUTLETS, INCON FUEL SYSTEM, AND VIKING AUTO DIALER.
13. CONTRACTOR SHALL PROVIDE PULL BOXES OR MANHOLES AS REQUIRED TO MEET NEC REQUIREMENTS FOR PULL POINTS. PULL BOX / MANHOLE SHALL HAVE A TRAFFIC RATING "H20" DUE TO GROUNDS MAINTENANCE EQUIPMENT. HUBBLE QUAZITE #PG4848BA48 W/ COVER #PG4848HH00 OR APPROVED EQUAL.
14. CONDUIT ENTERING THE TRANSITION SUMP SHALL BE MADE UTILIZING A STTB TYPE BULK HEAD FITTING. A SEALED FITTING SHALL BE UTILIZED ABOVE THE CONCRETE CAP TO PREVENT THE ENTRANCE OF WATER INTO THE SUMP WHEN ENTERING THE TOP OF THE SUMP. COORDINATE CONDUIT PLACEMENT WITH MECHANICAL AND STRUCTURAL DRAWINGS.

NOTES:

1. ALL ELECTRICAL INSTALLATIONS SHALL BE IN ACCORDANCE WITH THE 2011 EDITION OF THE NATIONAL ELECTRICAL CODE (NEC NFPA 70) AND THE OCCUPATIONAL SAFETY AND HEALTH ACT (OSHA) AND PROJECT SPECIFICATIONS AND APPLICABLE CODES AND STANDARDS.
2. ALL BUILDING PENETRATIONS SHALL BE SEALED WITH A FIRE BLOCK SEALANT TO PREVENT WATER FROM ENTERING THE INTERIOR. ALL PANEL ENTRY PENETRATIONS SHALL UTILIZE MYERS HUBS WITH GROUNDING BUSHINGS.
3. ALL CONDUIT/DUCTBANK ROUTING IS SHOWN DIAGRAMMATIC. CONTRACTOR SHALL VERIFY LOCATION, ROUTING, AND PULL BOX REQUIREMENTS BEFORE INSTALLATION. COORDINATE INSTALLATION WITH OTHER CRAFTS BEFORE INSTALLING CONDUITS, PULL BOXES AS REQUIRED, PANELS, AND DEVICES.
4. ALL SHUT DOWN WORK REQUIRED SHALL BE PLANNED AND APPROVED BY THE STATION BEFORE PROCEEDING. PROVISIONS SHALL BE PROVIDED FOR ELECTRICAL POWER DURING SHUTDOWN PERIODS, INCLUDING TEMPORARY GENERATOR, DAY TANK, REQUIRED FUEL AND OPERATOR TECHNICIAN AS REQUIRED.
5. CONTRACTOR SHALL VERIFY ELECTRICAL PHASE ARRANGEMENTS / CONNECTIONS, MAKING ADJUSTMENTS AS REQUIRED, MATCHING THE NEW INSTALLED SYSTEM(S) TO THE EXISTING FACILITIES SYSTEM. NEW PANEL CONNECTIONS TO EXISTING EQUIPMENT SHALL BE VERIFIED BEFORE APPLICATION OF POWER. FACILITIES ENGINEER SHALL BE PRESENT UPON ENERGIZING EQUIPMENT.
6. CONDUITS INSTALLED UNDERGROUND SHALL BE PVC COATED RIGID GALVANIZED STEEL. ABOVE GRADE EXTERIOR CONDUITS SHALL BE RIGID GALVANIZED STEEL (RGS), INTERIOR CONDUITS MAY BE ELECTRICAL METALLIC TUBING (EMT).
7. CONTRACTOR SHALL INSTALL SURFACE MOUNTED CONDUIT AND WIRING FROM ALL EXTERIOR MODULE LIGHTING FIXTURES TO A SINGLE WIRING POINT PER MODULE. CONDUITS SHALL BE PAINTED TO MATCH THE MODULE COLOR. THE SINGLE POINT CONNECTION FOR THE GENERATOR MODULE SHALL NOT BE LOCATED BELOW THE EMP POWER FILTER ENCLOSURE. SEE CELLXION DRAWINGS FOR FIXTURE LOCATIONS.
8. SEE CELLXION MODULE DRAWINGS SKBR01 & SKBR02 FOR BUILDING PENETRATION LOCATIONS TO COORDINATE CONDUITS STUB-UPS CONNECTIONS.
9. CONTRACTOR SHALL PROVIDE FIBER OPTIC JUMPERS (PIGTAILS) AS REQUIRED FOR CONNECTION TO THE PROGRAMMING EQUIPMENT. CONNECTING TO THE OSP FIBER OPTIC CABLING TO THE FIBER OPTIC WALL MOUNT INTERCONNECTION CENTER BY SABRE INDUSTRIES. CONTRACTOR SHALL FURNISH ST STYLE CONNECTORS INSTALLING FAN OUT KITS AS REQUIRED FOR THE 6 FIBER 62.5 / 125 MULTI-MODE OUTSIDE PLANT RATED F/O CABLE.
10. CONTRACTOR SHALL INSTALL THE INSTRUMENT JUNCTION BOX ON TOP OF THE FUEL TANK BETWEEN THE FIELD DEVICES TO ALLOW FOR INSTALLATION / CHECKING OF INSTRUMENT CONNECTIONS. JUNCTION BOX SHOULD BE LOCATED ADJACENT TO THE CATWALK.

LEGEND:

- UNDERGROUND CONDUIT
- _____ ABOVE GROUND CONDUIT
- 3\"/>



Project Manager	
DC Reviewer	
Architectural	
Mechanical	
Plumbing	
Electrical	
Other	

Mark	
Date	
11/7/12	
Approved	

Issued for Construction	
Date	
11/7/12	
Approved	

Designed by	
Drawn by	
Checked by	
Reviewed by	
Date	2012

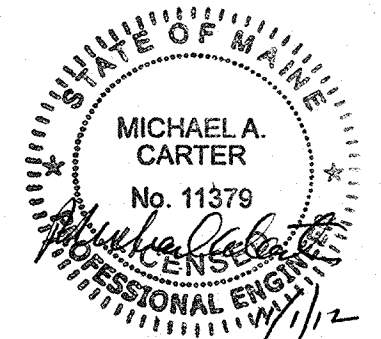
KBR
 63 SOUTH BROAD STREET SUITE 200
 MOBILE, AL 36602
 PHONE (251) 462-7600
 FAX (251) 462-7601

FEMA
 FEDERAL EMERGENCY MANAGEMENT AGENCY

KBR Engineering Services
 KBR Engineering Co., LLC

FEMA EMERGENCY RADIO NETWORK
 ON WIGAN PORTLAND, MAINE

ELECTRICAL POWER PLAN



Drawing Number:
E-103