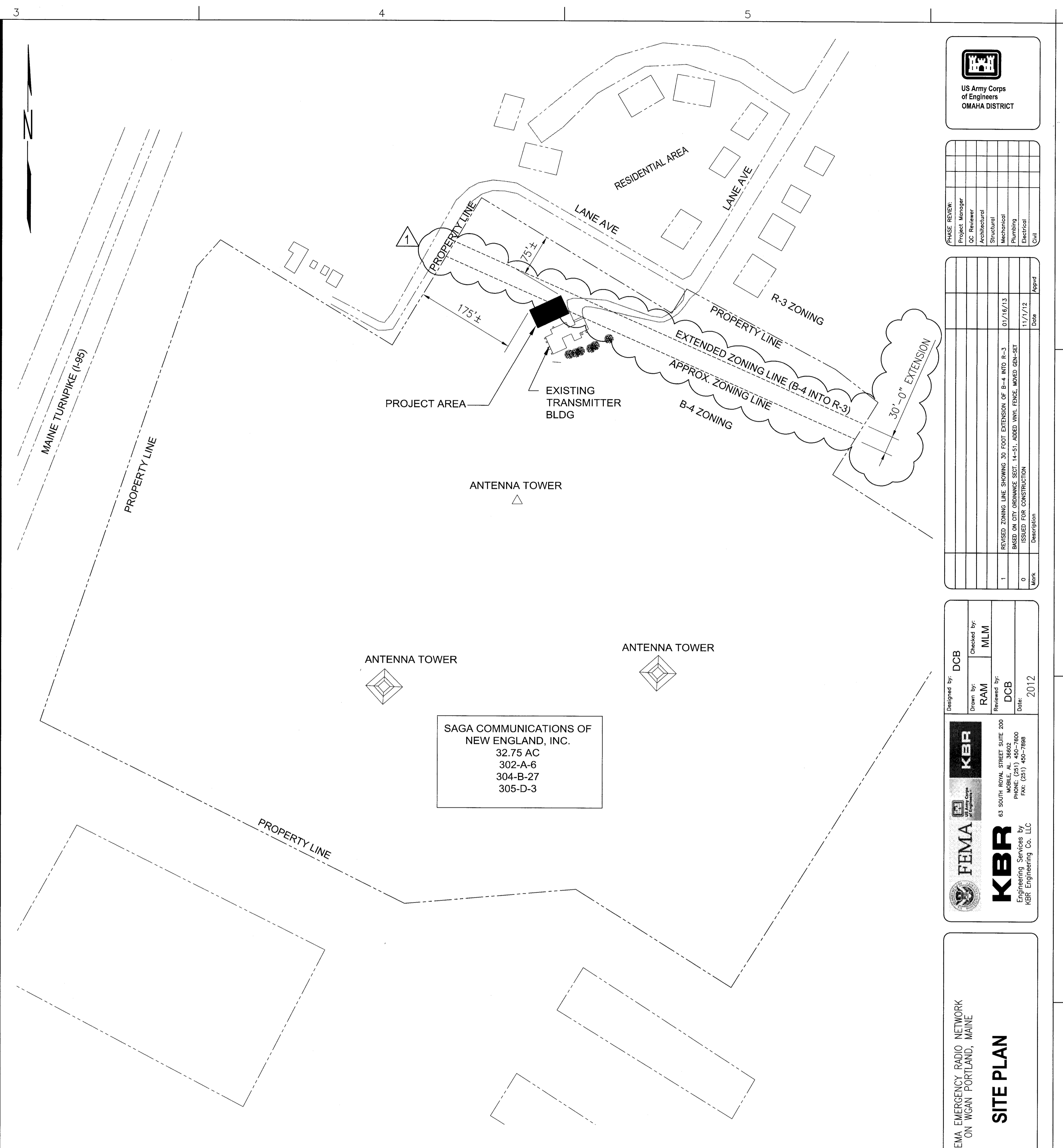
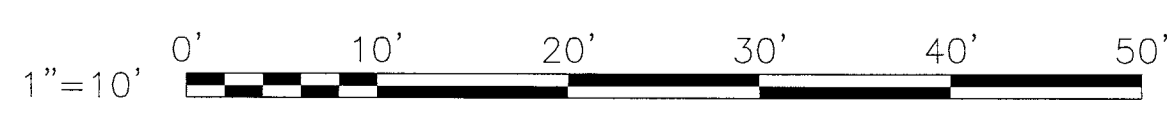
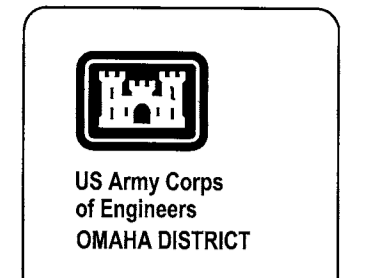
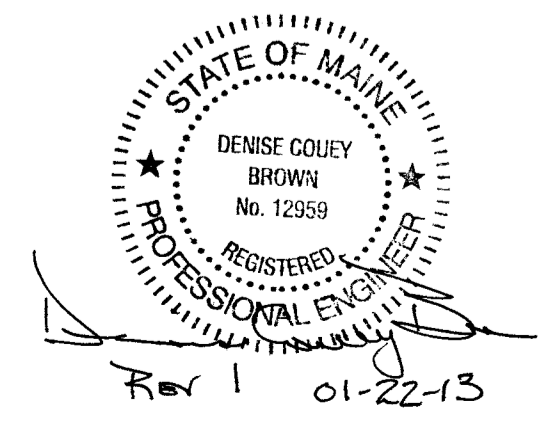


1 STATION WGAN - SITE PLAN
 G-001 SCALE: 1"=10'-0"



WGAN PROPERTY PLAN
 SCALE: 1"=100'



Project Manager	DC Reviewer	Architectural	Mechanical	Plumbing	Electrical	Civil

Revised	By	Date	Description
1		01/16/13	REVISED ZONING LINE SHOWING 30 FOOT EXTENSION OF B-4 INTO R-3 BASED ON CITY ORDINANCE SECT. 14-51, ADDED VINYL FENCE, MOVED GEN-SET ISSUED FOR CONSTRUCTION
0		11/17/12	ISSUED FOR CONSTRUCTION

Designed by:	Checked by:
DCB	MLM

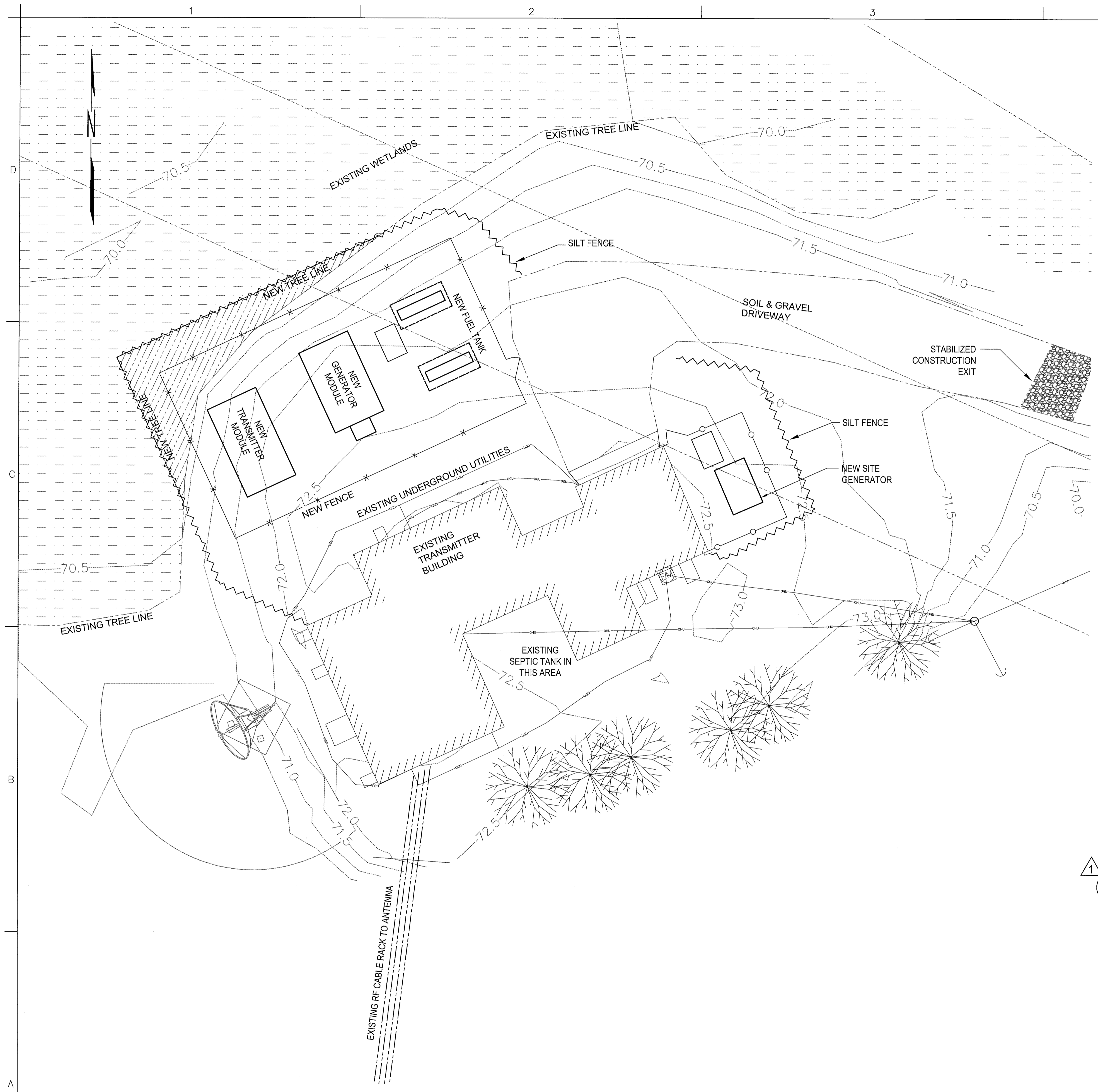
Drawn by:	Reviewed by:	Date:
RAM	DCB	2012

KBR
 63 SOUTH ROYAL STREET SUITE 200
 PORTLAND, MAINE 04101
 PHONE: (207) 462-7800
 FAX: (207) 462-7898

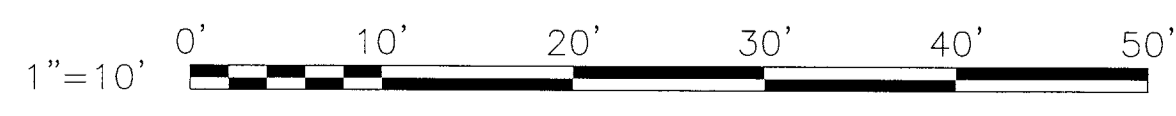
FEMA
 Engineering Services by
 KBR
 KBR Engineering Co., LLC

FEMA EMERGENCY RADIO NETWORK
 ON WGAN PORTLAND, MAINE
SITE PLAN

Drawing Number:
G-101



1
G-001 **STATION WGAN - SITE PLAN**
SCALE: 1"=10'-0"



STORM WATER QUALITY NOTES - CONSTRUCTION BMP'S

- THIS PROJECT SHALL COMPLY WITH ALL LOCAL, STATE AND FEDERAL REQUIREMENTS.
- SUFFICIENT BMP'S SHALL BE INSTALLED TO PREVENT SILT, MUD OR OTHER CONSTRUCTION DEBRIS FROM BEING TRACKED INTO THE ADJACENT STREET(S) OR STORM WATER CONVEYANCE SYSTEMS DUE TO CONSTRUCTION VEHICLES OR ANY OTHER CONSTRUCTION ACTIVITY. THE CONTRACTOR SHALL BE RESPONSIBLE FOR CLEARING ANY SUCH DEBRIS THAT MAY BE IN THE STREET AT THE END OF EACH WORK DAY OR AFTER A STORM EVENT THAT CAUSES A BREACH IN THE INSTALLED CONSTRUCTION BMP'S.
- ALL STOCK PILES OF UNCOMPACTED SOIL AND/OR BUILDING MATERIALS THAT ARE INTENDED TO BE LEFT UNPROTECTED FOR A PERIOD GREATER THAN SEVERAL CALENDAR DAYS ARE TO BE PROVIDED WITH EROSION AND SETTLEMENT CONTROLS. SUCH SOIL MUST BE PROTECTED EACH DAY WHEN THE PROBABILITY OF RAIN IS 40% OR GREATER.
- CONTRACTOR SHALL FIELD ADJUST AND PROVIDE ADDITIONAL SEDIMENT CONTROL MEANS AT NO ADDITIONAL COST TO OWNER IF WARRANTED BY FIELD CONDITIONS.
- ALL SLOPES THAT ARE CREATED OR DISTURBED BY CONSTRUCTION ACTIVITY MUST BE PROTECTED AGAINST EROSION AND SEDIMENT TRANSPORT AT ALL TIMES.
- THE STORAGE OF ALL CONSTRUCTION MATERIALS AND EQUIPMENT MUST BE PROTECTED AGAINST ANY POTENTIAL RELEASE OF POLLUTANTS INTO THE ENVIRONMENT.
- ALL GRADED, DISTURBED OR ERODED AREAS THAT WILL NOT BE PERMANENTLY PAVED, COVERED BY STRUCTURES OR COVERED BY WEED CONTROL FABRIC AND CRUSHED STONE, SHALL BE TREATED WITH HYDROSEED, SOD OR EQUIVALENT. ALL REQUIRED REVEGETATION AND EROSION CONTROL SHALL BE COMPLETED WITHIN 90 CALENDAR DAYS.
- ALL EROSION / SETTLEMENT CONTROL FACILITIES SHALL BE MAINTAINED IN WORKING ORDER AND AS SPECIFIED BY THE STATE ENVIRONMENTAL AGENCY. THESE FACILITIES SHALL BE INSPECTED AFTER EVERY PRECIPITATION EVENT. ANY NECESSARY REPAIRS WILL BE MADE IMMEDIATELY. ACCUMULATED SEDIMENTS WILL BE REMOVED AS REQUIRED TO KEEP THE DEVICES FUNCTIONAL. IN ALL CASES, REMOVE DEPOSITS WHERE ACCUMULATIONS REACH 3" ABOVE GRADE. ALL UNDERCUTTING OR EROSION OF THE TOE ANCHOR WILL BE REPAIRED IMMEDIATELY WITH COMPACTED BACKFILL MATERIALS. ADHERE TO ANY MANUFACTURER'S RECOMMENDATIONS.
- ANY CONTROL STRUCTURE DISTURBED DURING DAILY OPERATIONS SHALL BE REPAIRED, REPLACED OR RECONSTRUCTED AS REQUIRED UPON COMPLETION OF THE WORK DAY.
- THE CONTRACTOR WILL BE RESPONSIBLE DURING CONSTRUCTION AND FOR ONE YEAR FOR MAINTAINING THE E&S MEASURES TO INSURE COMPLIANCE WITH THE APPROVED PLAN AND THE APPLICABLE REGULATIONS OF THE STATE.
- ANY DISTURBED AREAS THAT WILL BE LEFT EXPOSED MORE THAN 13 DAYS AND NOT SUBJECT TO CONSTRUCTION TRAFFIC, WILL IMMEDIATELY RECEIVE A TEMPORARY SEEDING. IF THE SEASON PREVENTS THE ESTABLISHMENT OF A TEMPORARY COVER, THE DISTURBED AREA WILL BE MULCHED WITH STRAW OR EQUIVALENT MATERIAL, AT A RATE OF 2.5 TO 3 TONS PER ACRE. ANY STEEP SLOPES (GREATER THAN 3:1) SHALL BE STABILIZED DAILY.

SITE AREA

THE PROPOSED CONSTRUCTION PROJECT SHALL IMPACT APPROXIMATELY 0.09 ACRES (510 SF OF CONCRETE, 2250 SF OF GRAVEL GROUND COVER AND 1100 SF OF GRASS). GRADING PROPOSED ON THIS SITE AND POTENTIAL WETLAND IMPACT WILL BE IN ACCORDANCE WITH DWG C-102.

ACCORDING TO THE FEMA FLOOD INSURANCE RATE MAP 2300510006C, THE SITE IS OUTSIDE THE 500-YEAR FLOODPLAIN.

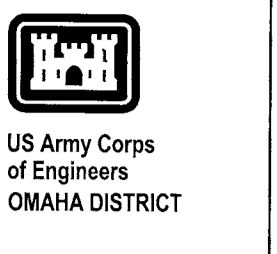
PLANNING AND ORGANIZATION

DURING CONSTRUCTION, THE KBR SITE MANAGER WILL OVERSEE THE IMPLEMENTATION AND MAINTENANCE OF THE STORMWATER PLAN.

BEST MANAGEMENT PRACTICES

- SILT FENCE - THE CONSTRUCTION SITE WILL BE SURROUNDED BY A SILT FENCE TO PREVENT RUNOFF OF SEDIMENT.
- STABILIZED CONSTRUCTION EXIT - A GRAVEL CONSTRUCTION EXIT WILL PREVENT DISPERSION OF SEDIMENT ONTO NEARBY ROADS.
- WATER QUALITY TREATMENT - 4" LAYER OF CRUSHED STONE OVER AN 18" LAYER OF CLEAN GRANULAR GRAVEL (MDOT 703.06 TYPE A)

ALL BMP'S SHALL BE IN ACCORDANCE WITH THE MAINE DEPARTMENT OF ENVIRONMENTAL PROTECTION PUBLICATION "MAINE EROSION AND SEDIMENT CONTROL BMP'S".



Project Manager	
DC Reviewer	
Architectural	
Structural	
Mechanical	
Plumbing	
Electrical	
Civil	

Work	Date	Appr
1	01/16/13	
2	11/7/12	
3		
4		
5		
6		
7		
8		
9		
10		
11		

Designed by:	DCB
Drawn by:	RAM
Checked by:	MLM
Reviewed by:	DCB
Date:	2012

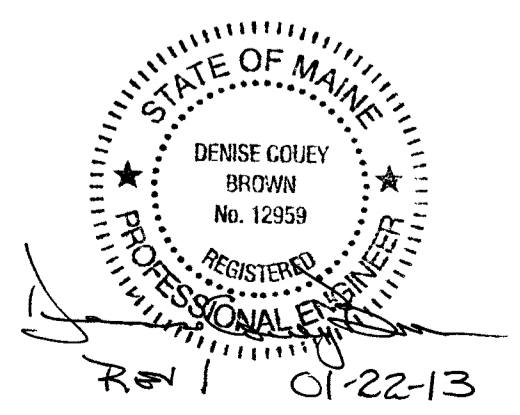
KBR
63 SOUTH ROYAL STREET SUITE 200
PORTLAND, ME 04106
PHONE: (207) 452-7900
FAX: (207) 452-7999

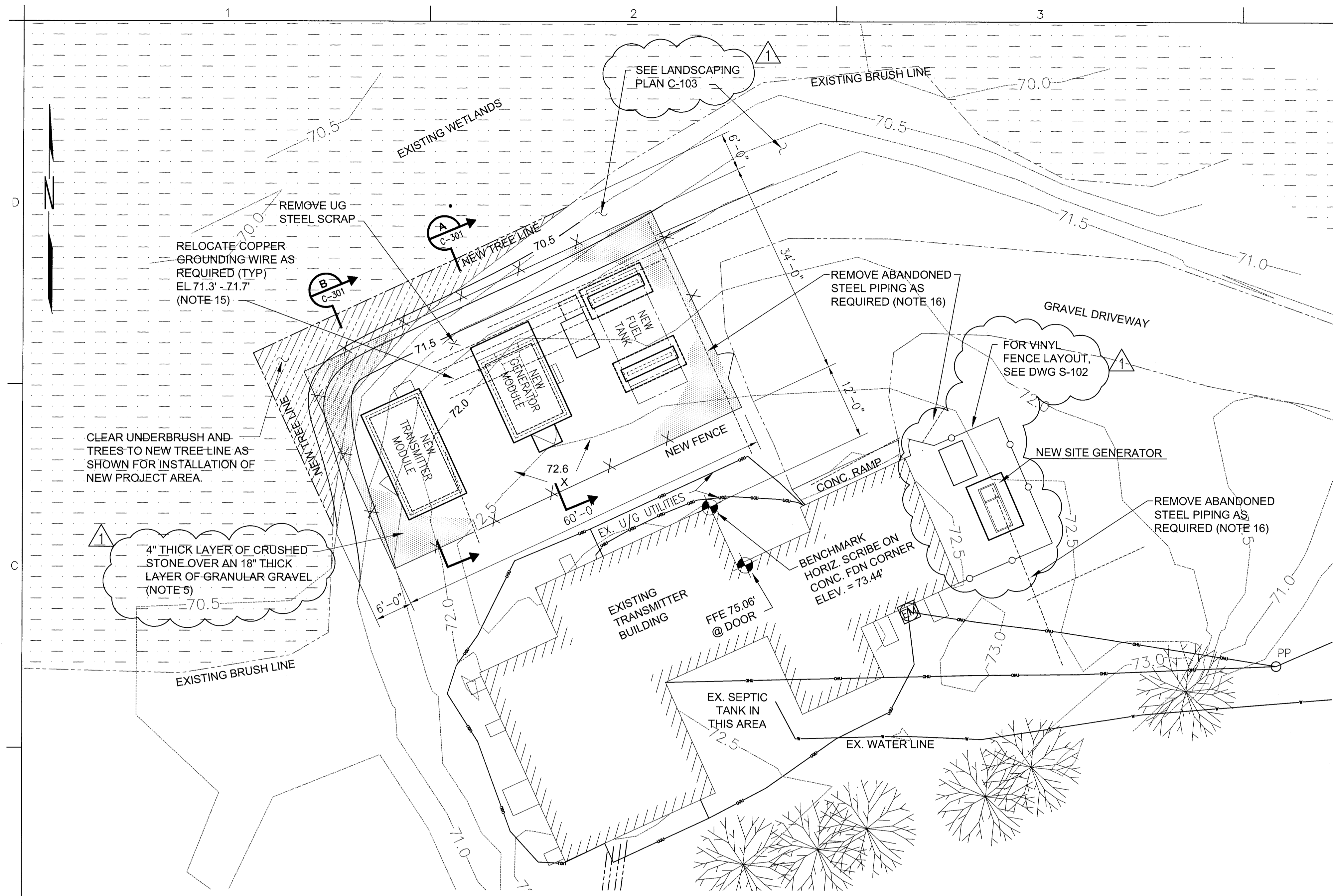
FEMA
KBR Engineering Co., LLC

FEMA EMERGENCY RADIO NETWORK
ON WGAN PORTLAND, MAINE

STORMWATER MANAGEMENT PLAN

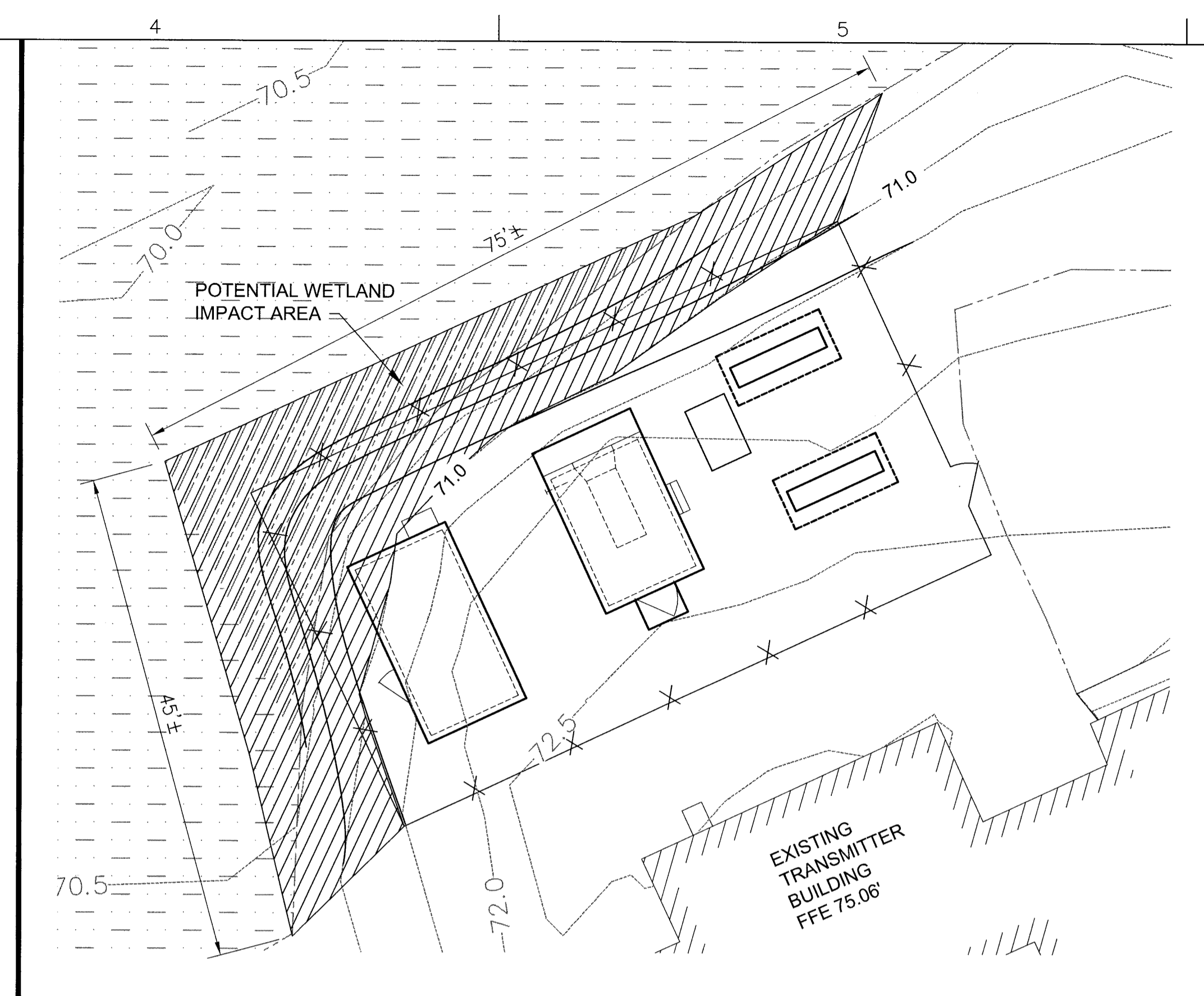
Drawing Number:
C-101





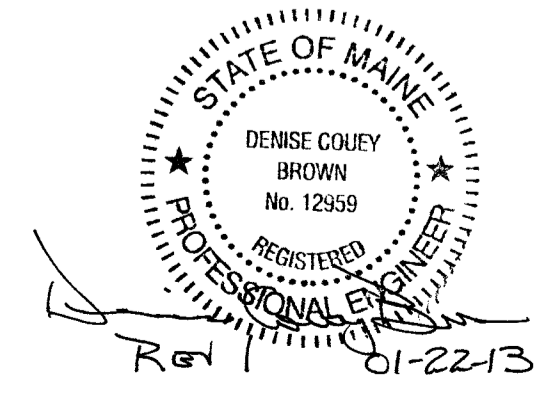
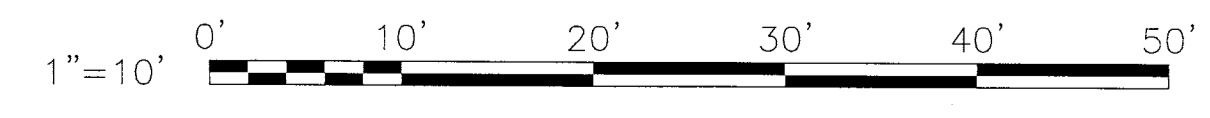
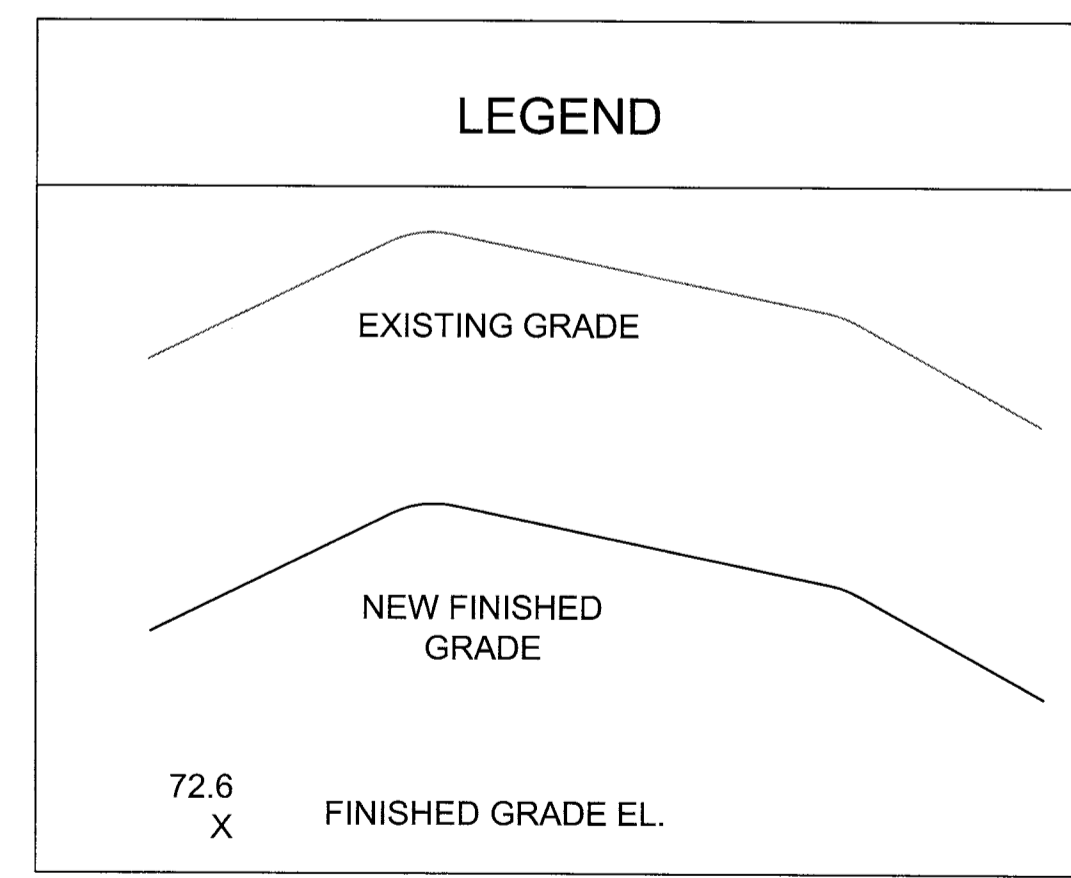
- NOTES:**
- SITE PREPARATION, EXCAVATION, AND BACKFILLING SHALL BE ACCOMPLISHED PER THE PLANS, SPECIFICATION 31 23 00.00 20, AND RECOMMENDATIONS IN THE GEOTECHNICAL REPORT BY SCHONEWALD ENGINEERING ASSOCIATES INC. DATED AUGUST 2012. GEOTECHNICAL SERVICES DURING CONSTRUCTION INCLUDING OBSERVATION AND TESTING OF THE EXCAVATIONS, BACKFILL AND COMPACTION, SHALL BE PERFORMED BY THE GEOTECHNICAL ENGINEER OF RECORD.
 - EXISTING SOILS SHOULD BE OVEREXCAVATED TO 2 FEET BELOW THE SPECIFIED BOTTOM OF FOOTING ELEVATION TO ACCOMMODATE FOR A LAYER OF 2 FEET THICK CRUSHED STONE BEDDING MATERIAL. THE STONE SHOULD BE WRAPPED IN A NON-WOVEN GEOTEXTILE FABRIC. SEE SPECIFICATION 31 23 00.00 20 FOR STONE AND FABRIC MATERIALS.
 - DURING DRILLING, GROUNDWATER WAS ENCOUNTERED AT AN APPROXIMATE DEPTH OF 9 FEET BELOW GRADE. POSITIVE DRAINAGE SHALL BE MAINTAINED DURING CONSTRUCTION. CONSTRUCTION DEWATERING MAY BE REQUIRED AND MUST BE PRESERVE THE UNDISTURBED CONDITION OF THE SUBGRADE.
 - MAINTAIN UNIFORM MOISTURE CONDITIONS IN THE EXPOSED SUBGRADE SOILS PRIOR TO CONSTRUCTION OF THE FOUNDATION. A 3 INCH THICK SEAL SLAB IS REQUIRED OVER THE BASE OF THE EXCAVATION IF FOUNDATIONS ARE NOT PLACED THE SAME DAY THE EXCAVATION IS COMPLETED.
 - 4 INCHES OF CRUSHED STONE OVER 18 INCHES (MINIMUM) OF GRANULAR GRAVEL SHALL BE PLACED WITHIN FENCED AREA AS SHOWN ON THE DRAWINGS. CRUSHED STONE SHALL BE CLEAN AND CONFORM TO ASTM C 33 COARSE AGGREGATE GRADING SIZE 4 (1 1/2" - 3/4"). GRANULAR GRAVEL (STRUCTURAL FILL) SHALL BE CLEAN AND CONFORM TO MDOT 703.06 TYPE A. WEED CONTROL FABRIC SHALL BE PLACED BETWEEN THE CRUSHED STONE AND THE GRANULAR GRAVEL, AND EXTEND 1 FOOT BEYOND FENCE LINE TO ALLOW GRAVEL TO TAPER TO EXISTING GRADE.
 - WHERE THE PROPOSED DUCTBANK OR FUEL LINE CROSSES THE EXISTING DRIVEWAY/PARKING AREA, 4 INCHES OF CRUSHED STONE SHALL BE PLACED OVER THE BACKFILLED TRENCHES. WHERE THE DUCTBANK AND FUEL LINE CROSS AN EXISTING GRASSED AREA, TOPSOIL AND SEEDING SHALL BE PLACED OVER THE COMPACTED BACKFILL. DISTURBED AREAS AROUND THE PROPOSED GENSET AND SUMP SHALL BE SEEDDED OR SODDED WITH 3" MINIMUM TOPSOIL. FOR DUCTBANK SECTION, SEE DWG E-504. FOR FUEL LINE TRENCH DETAIL, SEE DWG M-501. FOR TRENCH BACKFILL, SEE SPECIFICATION 31 23 00.00 20.

- FOLLOWING CONSTRUCTION OF FOUNDATIONS, THE SITE ELEVATION SHALL BE REPLACED TO EXISTING GRADE EXCEPT WHERE NOTED ON DRAWINGS. AREA MUST BE GRADED TO DRAIN WITH NO AREAS OF STANDING WATER PRIOR TO INSTALLATION OF GRAVEL.
- THE PROPOSED ELEVATIONS SHOWN ARE TOP OF GRADE. THE CRUSHED STONE WILL BE PLACED OVER THIS GRADE.
- CONTRACTOR SHALL BE RESPONSIBLE FOR ALL INSTALLATION AND MAINTENANCE OF EROSION AND SEDIMENT CONTROL DEVICES REQUIRED BY STATE AND LOCAL CODES, LAWS AND REGULATIONS. REFER TO DWG C-101.
- WETLANDS ARE LOCATED ON THE SUBJECT PROPERTY. THE WETLANDS ARE NOT TO BE IMPACTED IN ANY WAY DURING CONSTRUCTION EXCEPT AS NOTED. THE WETLANDS SHOWN ARE NOT DELINEATED AND ARE BASED ON THE U.S. FISH AND WILDLIFE WETLANDS INVENTORY, ELEVATION AND THE EXISTING BRUSH LINE.
- TOPOGRAPHIC SURVEY DATA FOR PROJECT SITE PROVIDED BY SEBAGO TECHNICS, INC. SEE SURVEY PLAN DATED JULY 2012. COORDINATES AND BEARINGS ARE REFERENCED TO GRID NORTH, MAINE STATE PLANE COORDINATE SYSTEM, WEST ZONE 1802 (NAD 83). THE VERTICAL DATUM SHOWN IS NAVD 88.
- GEOPHYSICAL DATA FOR THE PROJECT PROVIDED BY HAGER-RICHTER GEOSCIENCE, INC. SEE REPORT DATED JULY 2012 IN APPENDIX D OF THE GEOTECHNICAL REPORT.
- FOR FOUNDATION ELEVATIONS, SEE DWG S-301.
- FENCE TO BE IN ACCORDANCE WITH DETAIL ON DWG S-502 AND SPECIFICATION 32 31 13.53.
- CONTRACTOR TO COORDINATE WITH STATION ENGINEER AND ON-SITE PROJECT MANAGER ON LOCATION OF EXISTING ANTENNA GROUNDING SYSTEMS IN ADDITION TO THOSE SHOWN ON THIS DRAWING. GROUNDING WIRES AND/OR CONDUCTORS TO BE RELOCATED AS SHOWN ON THE ELECTRICAL DRAWINGS PRIOR TO EXCAVATION ACTIVITIES.
- CONTRACTOR RESPONSIBLE FOR VERIFYING EXISTING UNDERGROUND PIPING SHOWN IS NO LONGER IN SERVICE PRIOR TO REMOVAL.



NOTE - THE LIMITS OF WETLANDS ARE CONSERVATIVELY ASSUMED TO BE ELEVATION 71.0 AND THE IMPACT AREA IS SHOWN ALONG THIS CONTOUR. THE APPROXIMATE TOTAL IMPACT TO THE WETLANDS = 1170 SQ FT WHICH HAS RECEIVED USACE APPROVAL.

ALL EXCAVATION MUST BE CONTAINED WITHIN THE WETLANDS IMPACT LIMITS SHOWN AND COULD POTENTIALLY REQUIRE THE USE OF SHORING IN SOME AREAS.



Phase	Reviewed by	Date	Work
1	ADDED CRUSHED STONE AND GRANULAR GRAVEL REQUIREMENTS, DELETED BRILLOBS AND ADDED VINYL FENCE	07/19/13	
0	ISSUED FOR CONSTRUCTION	11/7/12	

Designed by	DCB
Checked by	MLM
Drawn by	RAM
Reviewed by	DCB
Date	2012

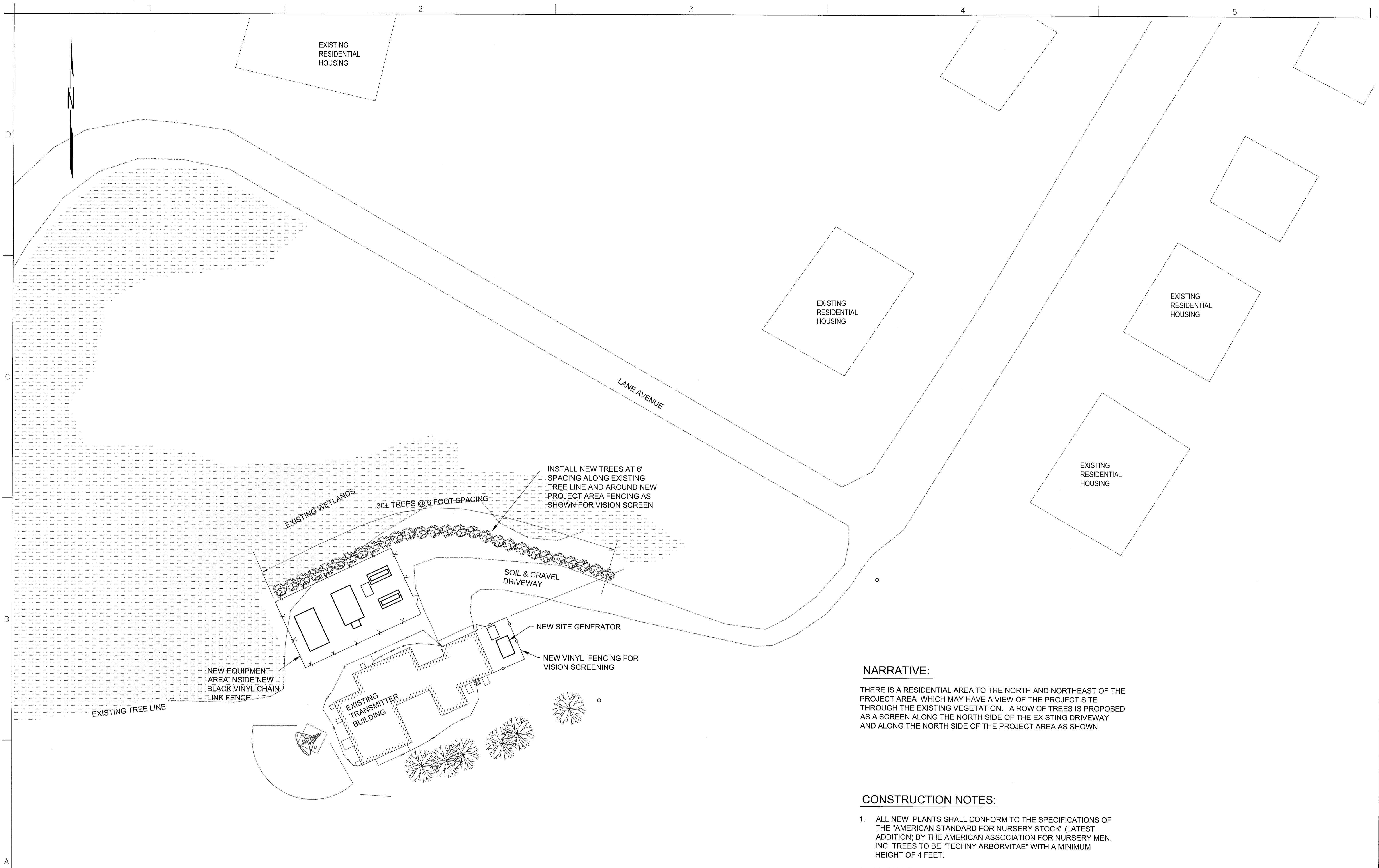
KBR
43 SOUTH ROYAL STREET SUITE 200
PORTLAND, MAINE 04106
PHONE: (207) 452-7600
FAX: (207) 452-7888

FEMA
FEMA EMERGENCY RADIO NETWORK
ON WGAN PORTLAND, MAINE

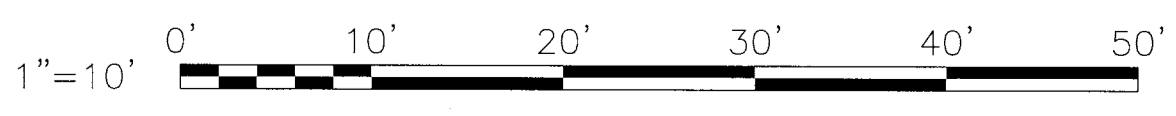
FEMA EMERGENCY RADIO NETWORK
ON WGAN PORTLAND, MAINE

CIVIL PLAN

Drawing Number:
C-102



1 STATION WGAN - SITE PLAN
 G-001 SCALE: 1"=10'-0"

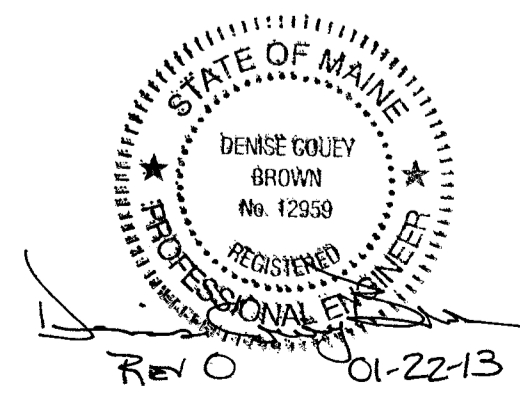


NARRATIVE:

THERE IS A RESIDENTIAL AREA TO THE NORTH AND NORTHEAST OF THE PROJECT AREA WHICH MAY HAVE A VIEW OF THE PROJECT SITE THROUGH THE EXISTING VEGETATION. A ROW OF TREES IS PROPOSED AS A SCREEN ALONG THE NORTH SIDE OF THE EXISTING DRIVEWAY AND ALONG THE NORTH SIDE OF THE PROJECT AREA AS SHOWN.

CONSTRUCTION NOTES:

1. ALL NEW PLANTS SHALL CONFORM TO THE SPECIFICATIONS OF THE "AMERICAN STANDARD FOR NURSERY STOCK" (LATEST ADDITION) BY THE AMERICAN ASSOCIATION FOR NURSERY MEN, INC. TREES TO BE "TECHNY ARBORVITAE" WITH A MINIMUM HEIGHT OF 4 FEET.
2. THE LAYOUT OF THE TREES SHALL BE APPROVED BY THE SITE MANAGER PRIOR TO PLANTING.
3. THE LANDSCAPE CONTRACTOR SHALL BE RESPONSIBLE FOR DETERMINING LOCATIONS OF ANY EXISTING UNDERGROUND UTILITY LINES PRIOR TO PLANTING.
4. THE LANDSCAPE CONTRACTOR SHALL GUARANTEE ALL PLANT MATERIALS AND LABOR FOR ONE YEAR.



PHASE REVIEW:	Project Manager	
	DC Reviewer	
	Architectural	
	Structural	
	Mechanical	
	Plumbing	
	Electrical	
	Civil	

ISSUED FOR CONSTRUCTION	Date	01/16/13
Work	Description	
DCB	Approved	

Designed by:	DCB
Drawn by:	RAM
Checked by:	MLM
Reviewed by:	DCB
Date:	2012

FEMA
 KBR
 63 South River Street, Suite 200
 Woburn, MA 01892
 PHONE: (617) 450-7600
 FAX: (617) 450-7698
KBR
 Engineering Services by
 KBR Engineering Co. LLC

FEMA EMERGENCY RADIO NETWORK
 ON WGAN PORTLAND, MAINE
LANDSCAPING PLAN

Drawing Number:
C-103

NOTES:

1. FOR CIVIL GENERAL NOTES AND PLAN, SEE DWG C-102.
2. FOR EXCAVATION & BACKFILL REQUIREMENTS, SEE GEOTECHNICAL REPORT AND SPECIFICATION 31 23 00 .00 20.
3. FOR TOP OF CONCRETE ELEVATIONS, SEE DWG S-301.



US Army Corps
of Engineers
OMAHA DISTRICT

Project Manager	
DC Reviewer	
Architectural	
Structural	
Mechanical	
Plumbing	
Electrical	
Civil	

Mark	Description	Date	App'd
1	ADDED CRUSHED STONE AND GRANULAR GRAVEL REQUIREMENTS, DELETED BARBED WIRE AND RAZOR WIRE	07/16/13	
0	ISSUED FOR CONSTRUCTION	11/7/12	

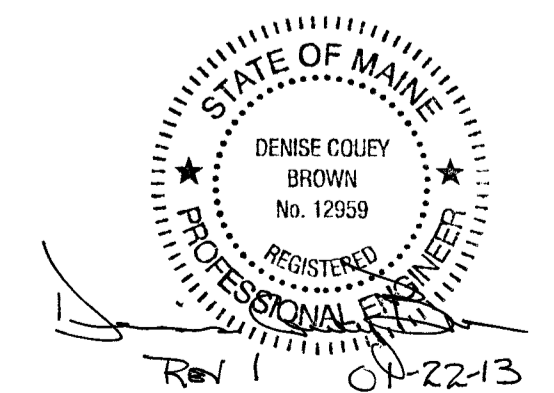
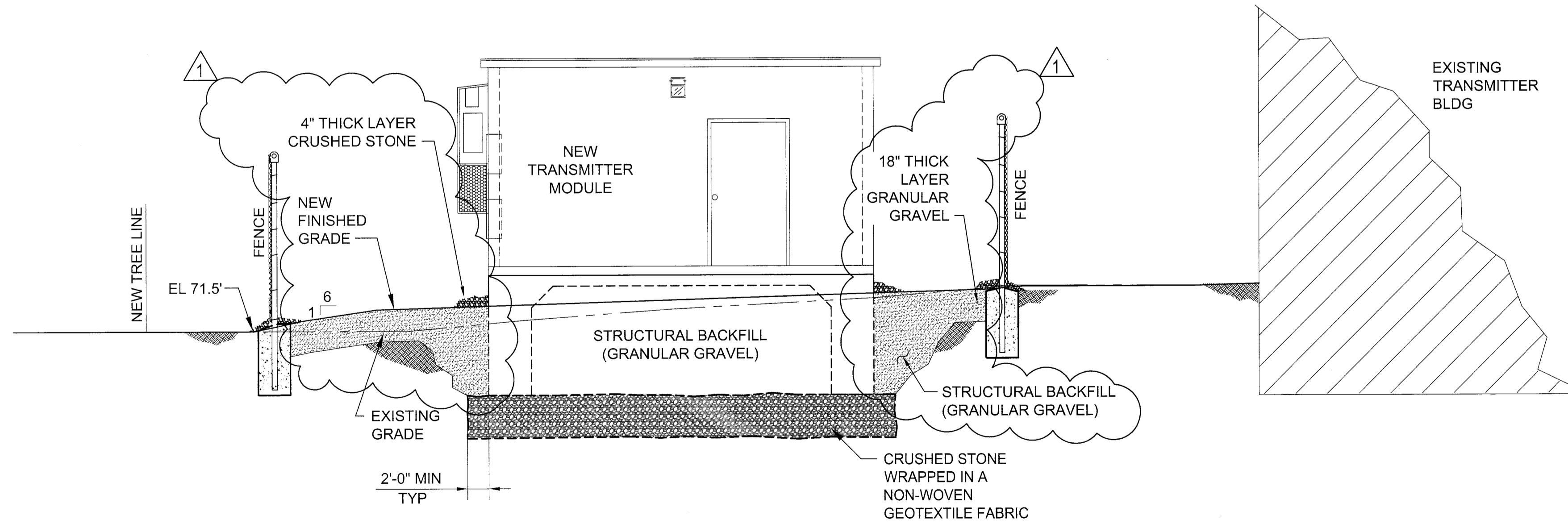
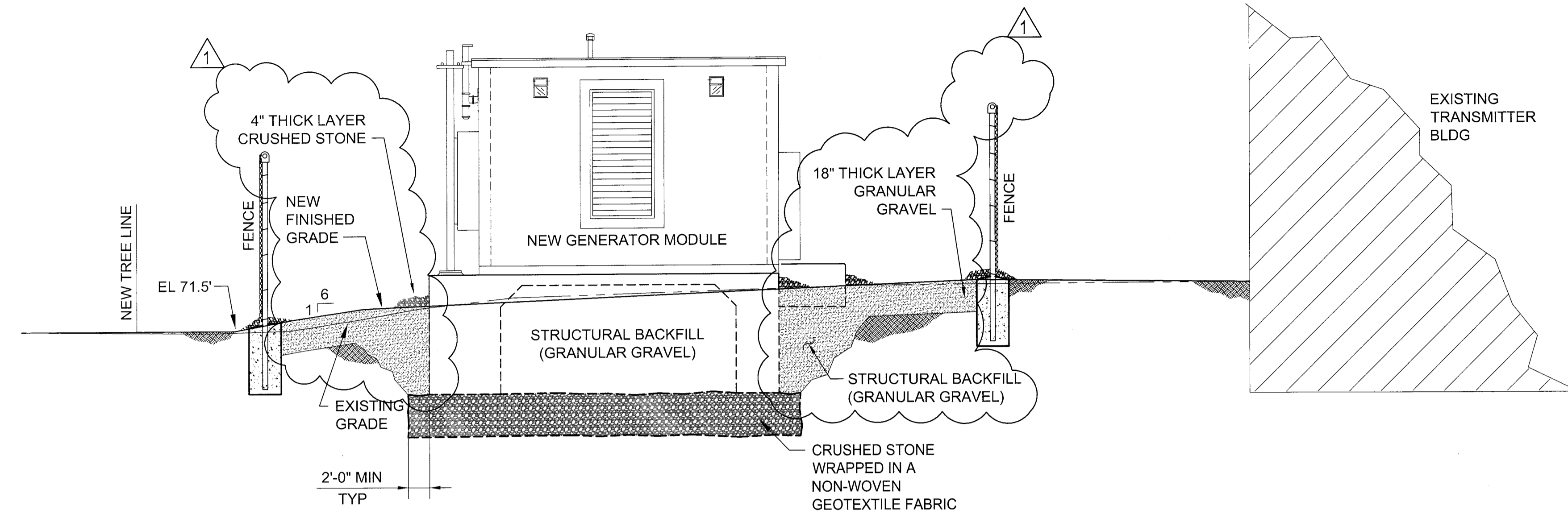
Designed by:	DCB
Drawn by:	RAM
Checked by:	DCB
Reviewed by:	CHB
Date:	2012

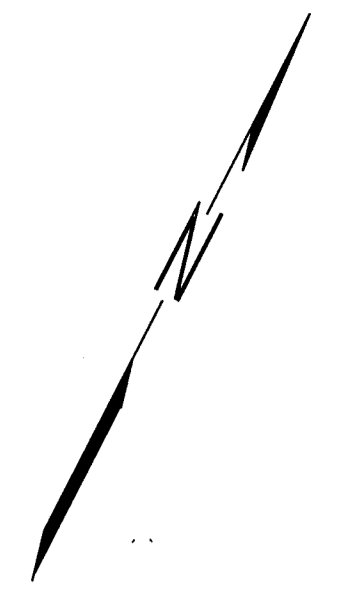
KBR
FEMA
83 SOUTH ROYAL STREET SUITE 200
PORTLAND, ME 04102
PHONE: (203) 400-7800
FAX: (203) 400-7898

KBR
Engineering Services by
KBR Engineering Co., LLC

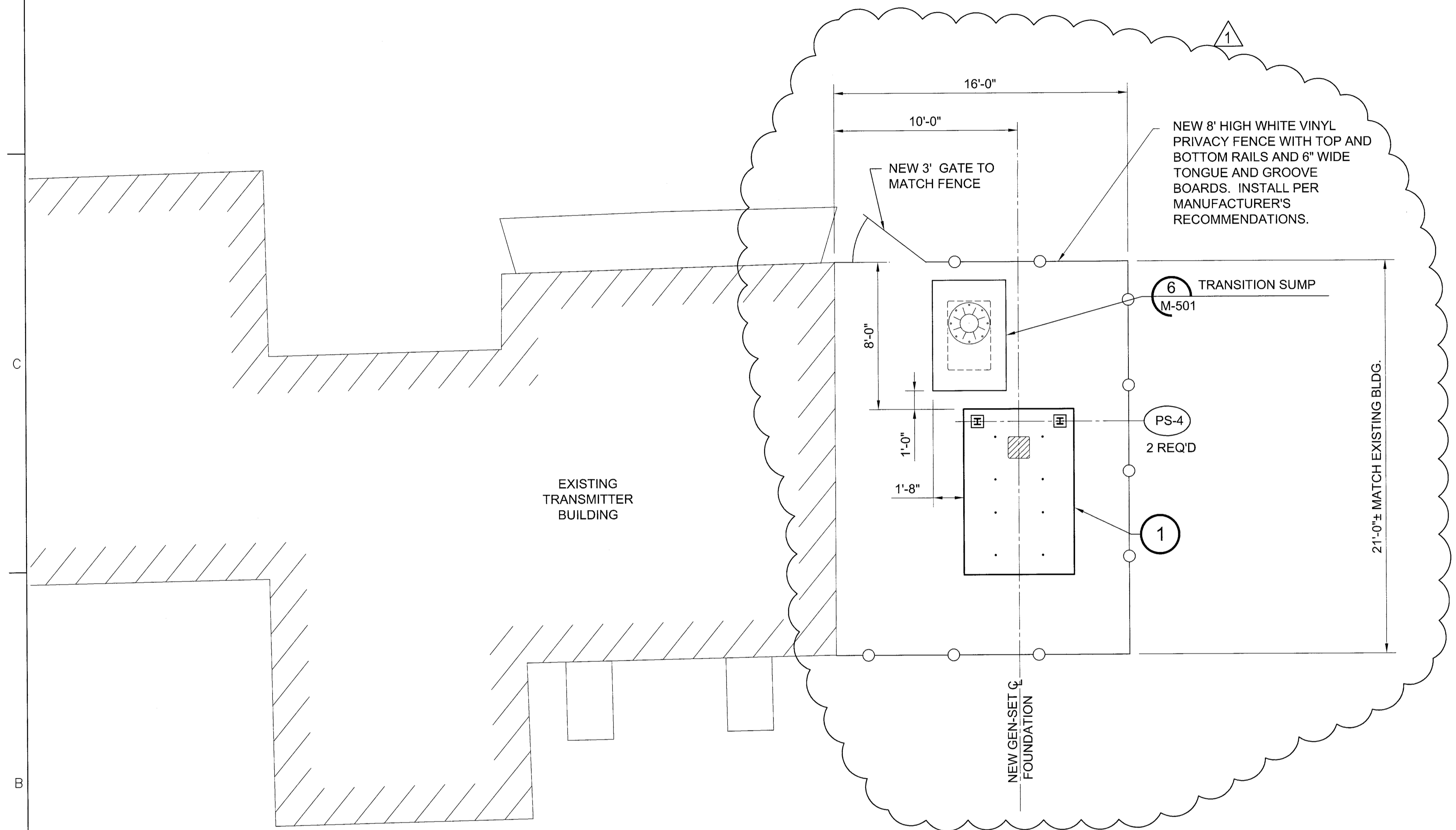
FEMA EMERGENCY RADIO NETWORK
ON WIGAN PORTLAND, MAINE
CIVIL SECTIONS

Drawing Number:
C-301

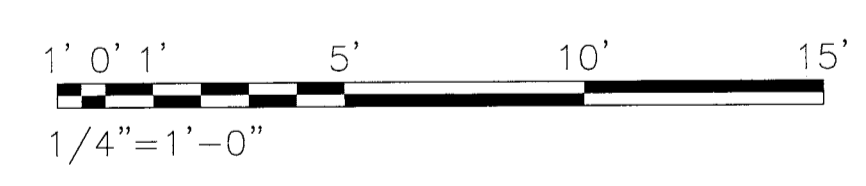




D
C
B
A

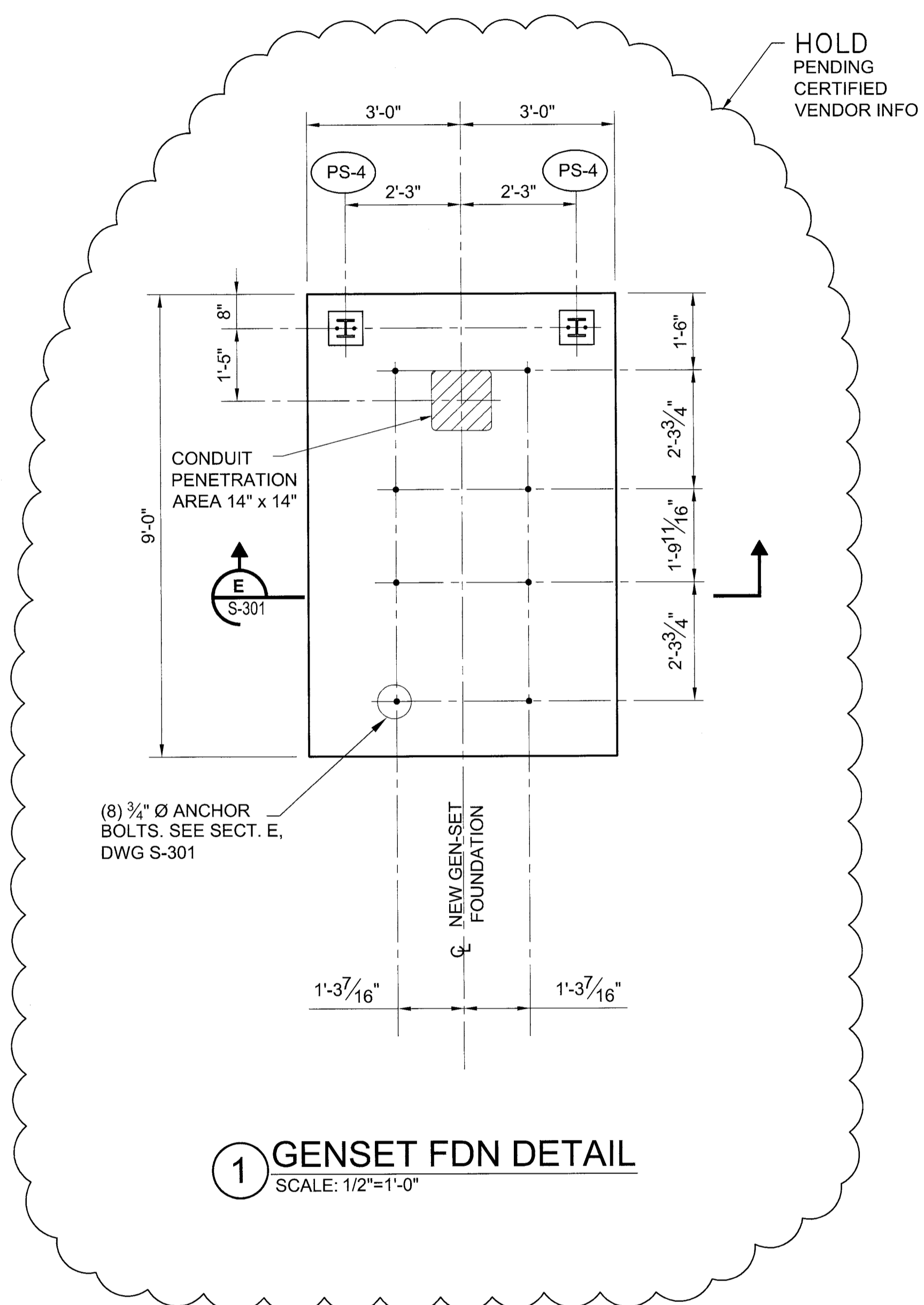


A SITE GENERATOR FOUNDATION PLAN
G-101 SCALE: 1/4"=1'-0"



NOTES:

- FOR STRUCTURAL GENERAL NOTES, SEE DWG S-001. FOR CIVIL NOTES, SEE DWG C-102.
- PS-1 PIPE SUPPORT DESIGNATOR. SEE DWG S-501.
- SEE ELECTRICAL DRAWINGS FOR GROUNDING.



1 GENSET FDN DETAIL
SCALE: 1/2"=1'-0"

US Army Corps of Engineers OMAHA DISTRICT

Project Manager	
GC Reviewer	
Architectural	
Structural	
Mechanical	
Plumbing	
Electrical	
Civil	

Work	Description	Date	App'd
0	ISSUED FOR CONSTRUCTION	11/17/12	
1	ADDED VINYL FENCING, RELOCATED GEN-SET, DELETED BOLLARDS	1/22/13	

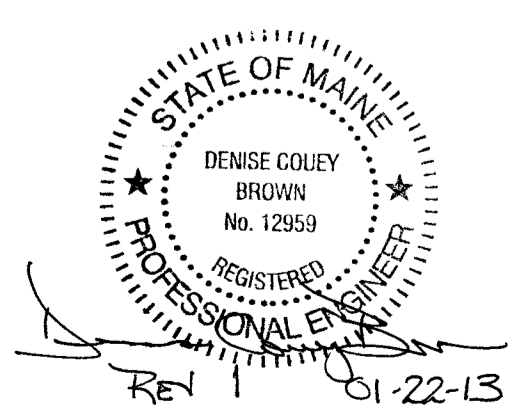
Designed by:	DCB
Drawn by:	RAM
Checked by:	MLM
Reviewed by:	CHB
Date:	2012

FEMA
43 SOUTH ROYAL STREET SUITE 200
MOBILE, AL 36602-9000
PHONE (251) 407-7900
FAX (251) 407-7998

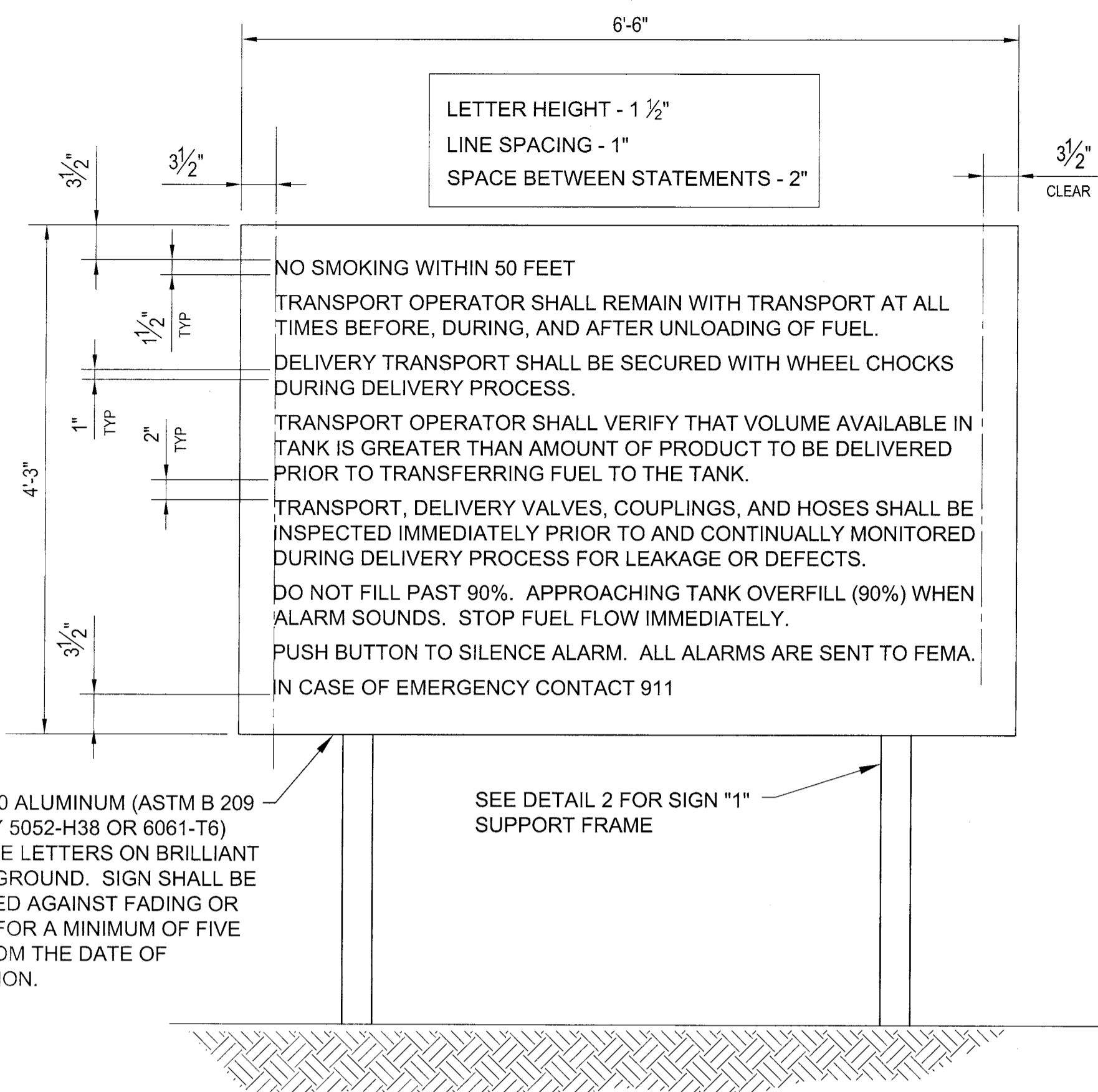
KBR
Engineering Services by
KBR Engineering Co., LLC

FEMA EMERGENCY RADIO NETWORK
ON WIGAN PORTLAND, MAINE

SITE GENERATOR FOUNDATION PLAN

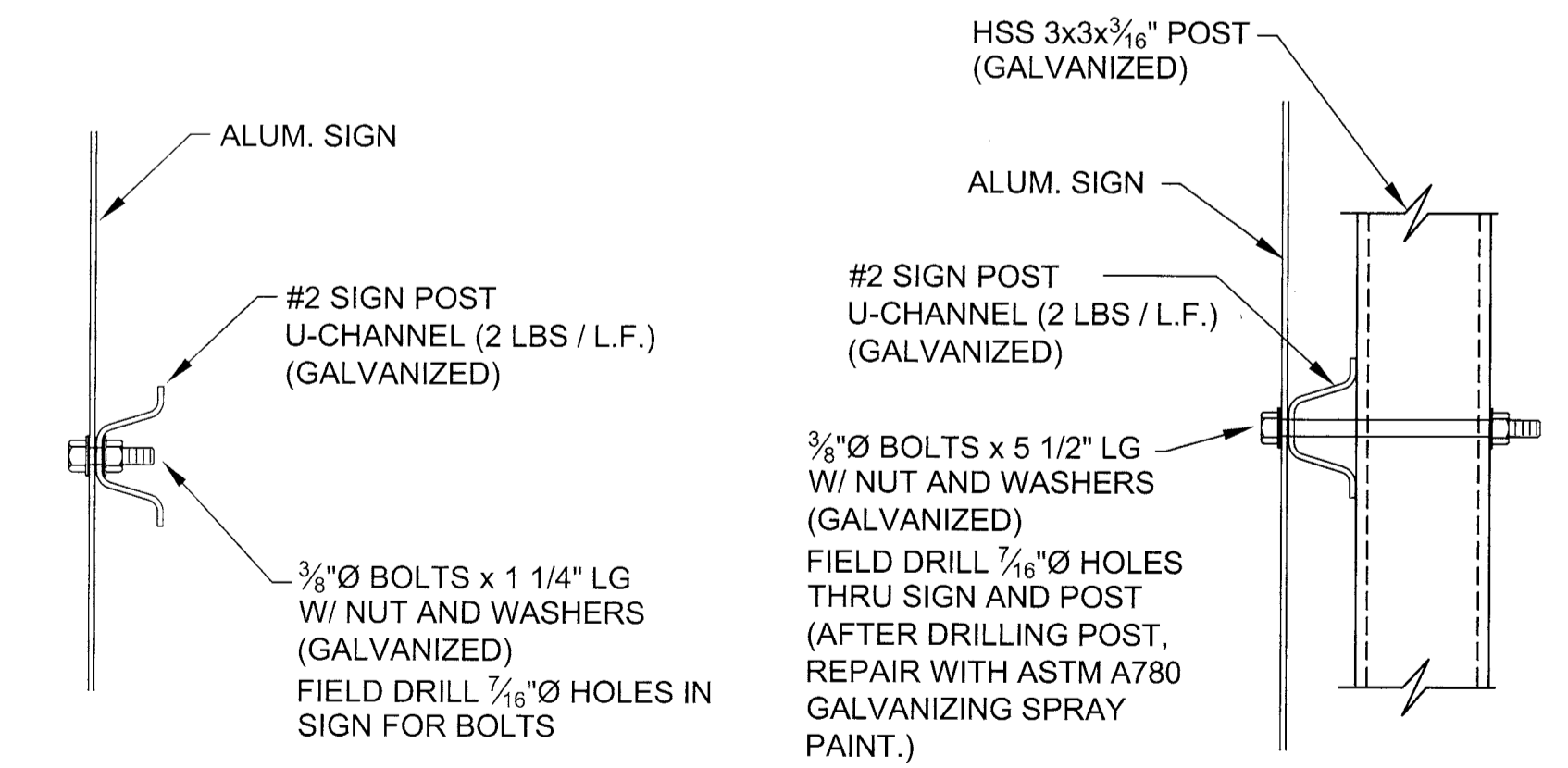


Drawing Number:
S-102



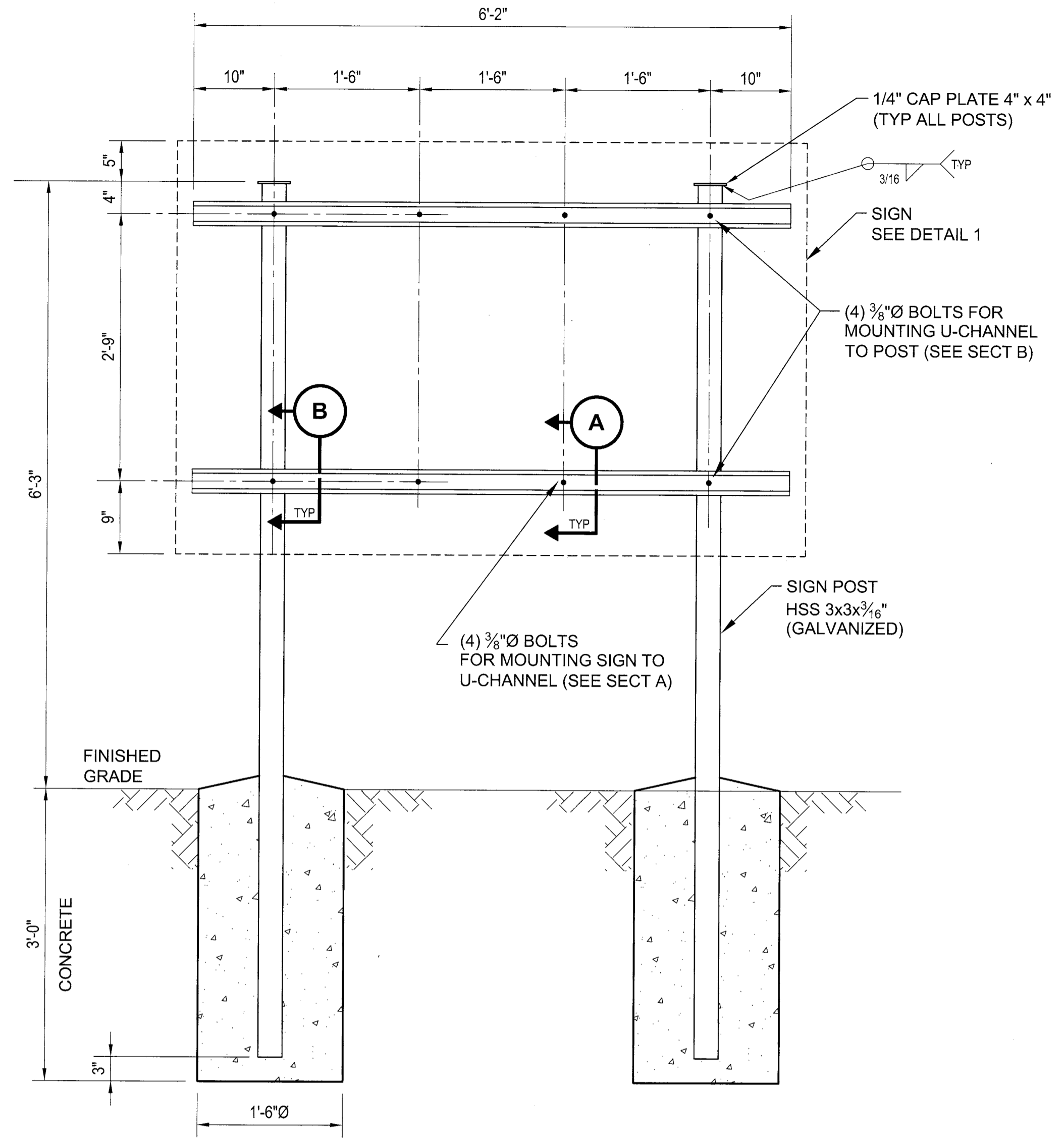
1 SIGN "1" DETAIL
M-101 SCALE: 1"=1'-0"

INSTALLATION CONTRACTOR TO TOUCH UP ALL DAMAGED GALVANIZING WITH ZRC COLD GALVANIZING COMPOUND, OR APPROVED EQUAL.



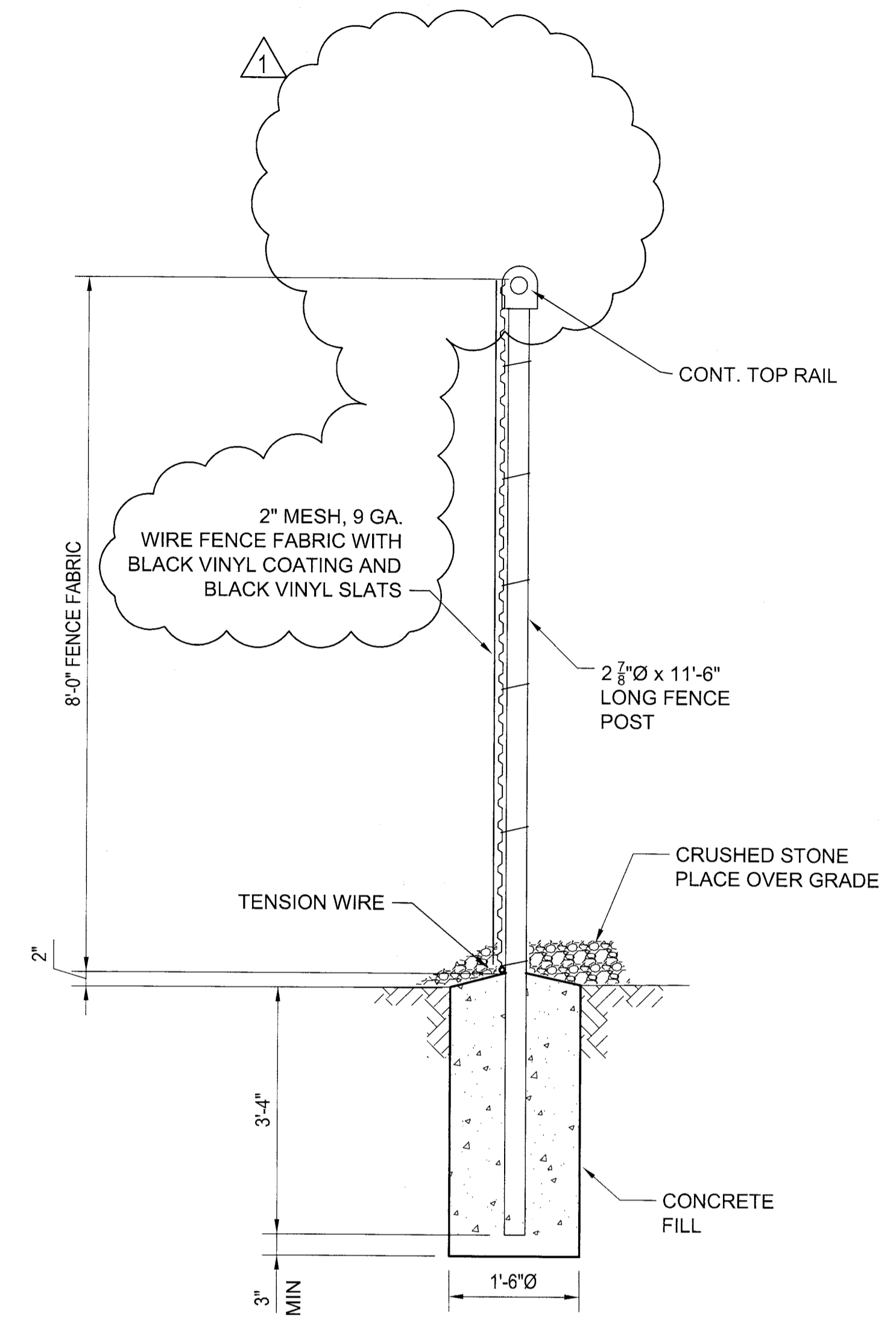
A SECTION
SCALE: 3"=1'-0"

B SECTION
SCALE: 3"=1'-0"



2 SIGN "1" SUPPORT FRAME DETAIL
SCALE: 1"=1'-0"

FOR SIGN LOCATION, SEE MECHANICAL DRAWINGS.



C TYP FENCE SECTION
S-101 SCALE: 3/4"=1'-0"



Project Manager	
QC Reviewer	
Architectural	
Structural	
Mechanical	
Plumbing	
Electrical	
Civil	

Mark	Description	Date	Rev
1	REMOVED BARBED WIRE AND RAZOR WIRE, ADDED BLACK VINYL COATING AND BLACK VINYL SLATS	07/15/13	
0	AS-BUILT FOR CONSTRUCTION	11/17/12	

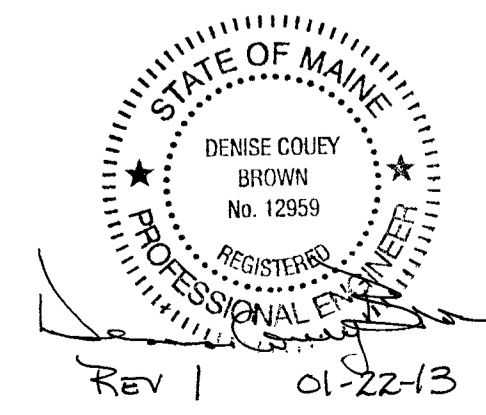
Designed by:	MLM
Drawn by:	RAM
Checked by:	DCB
Reviewed by:	CHB
Date:	2012

KBR
63 SOUTH ROYAL STREET, SUITE 200
MOBILE, AL 36602
Phone: (251) 452-7800
Fax: (251) 452-7898

FEMA
Engineering Services by
KBR Engineering Co., LLC

FEMA EMERGENCY RADIO NETWORK
ON WGAN PORTLAND, MAINE

SIGN AND FENCE DETAILS



Drawing Number:
S-502

Rev 1 01-22-13