

LOCATION OF EXISTING
GUY WIRE ANCHORS (TYP)

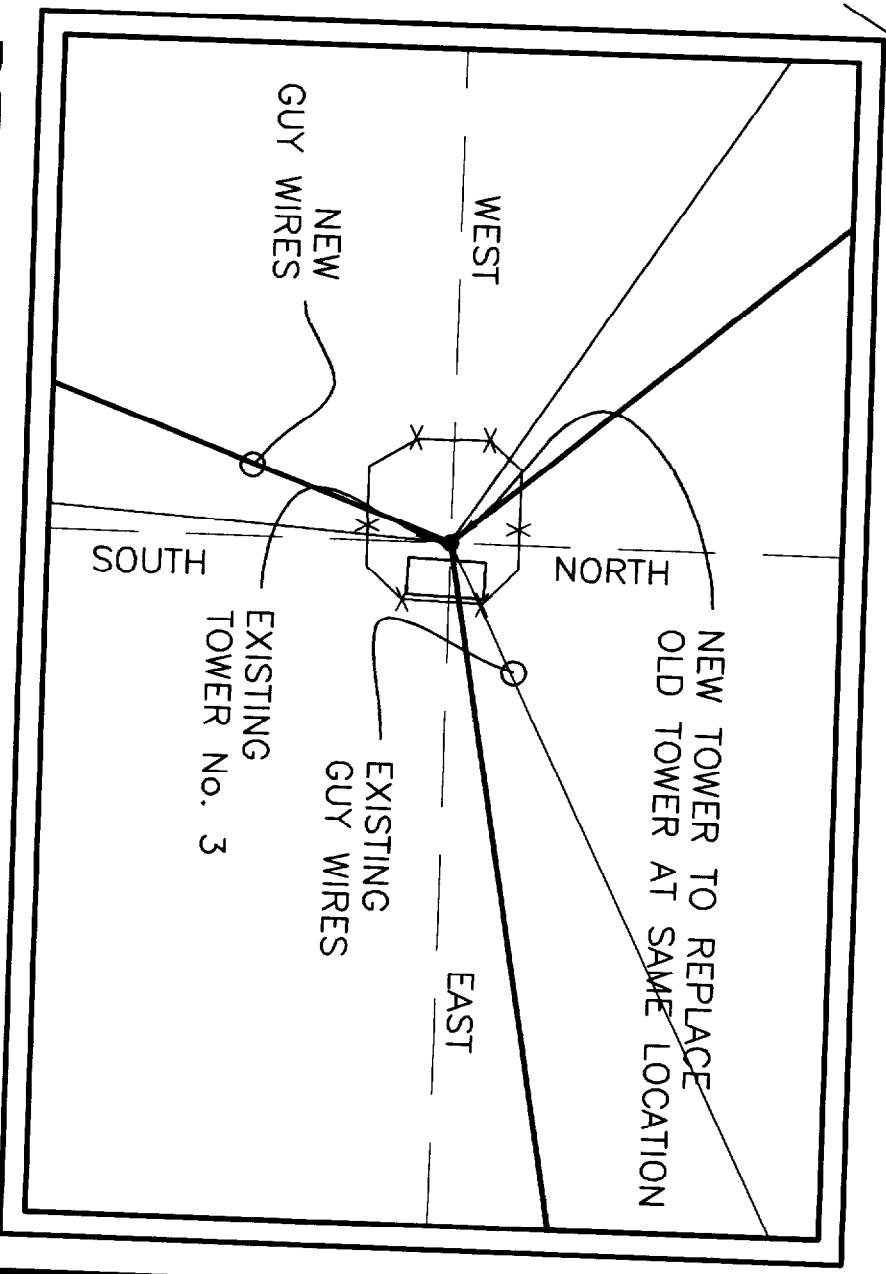
EXISTING BUILDING

BRIAN D. & FRANCINE M.
BACHELDER
10848/195

N/F ANISSA E.
MILLETTE
12788/307

387.75'

DETAIL OF NEW TOWER LOCATION
SCALE: 1" = 20'-0"



DENOTES BORING LOCATION

ACEMENT

ERTY AND
TER AND ANCHORS

THIS DRAWING, DESIGN AND
ELECTRONIC FILE ARE THE PROPERTY
OF ASSOCIATED DESIGN PARTNERS, INC.
THE REPRODUCTION, COPYING OR ANY
OTHER USE OF THIS DOCUMENT WITHOUT
WRITTEN CONSENT IS PROHIBITED.

ASSOCIATED DESIGN PARTNERS INC.

80 Leighton Road
Falmouth, Maine 04105

Office: (207) 878-1751
Fax: (207) 878-1788
E-Mail: adp@adpengineering.com

STATE OF MAINE

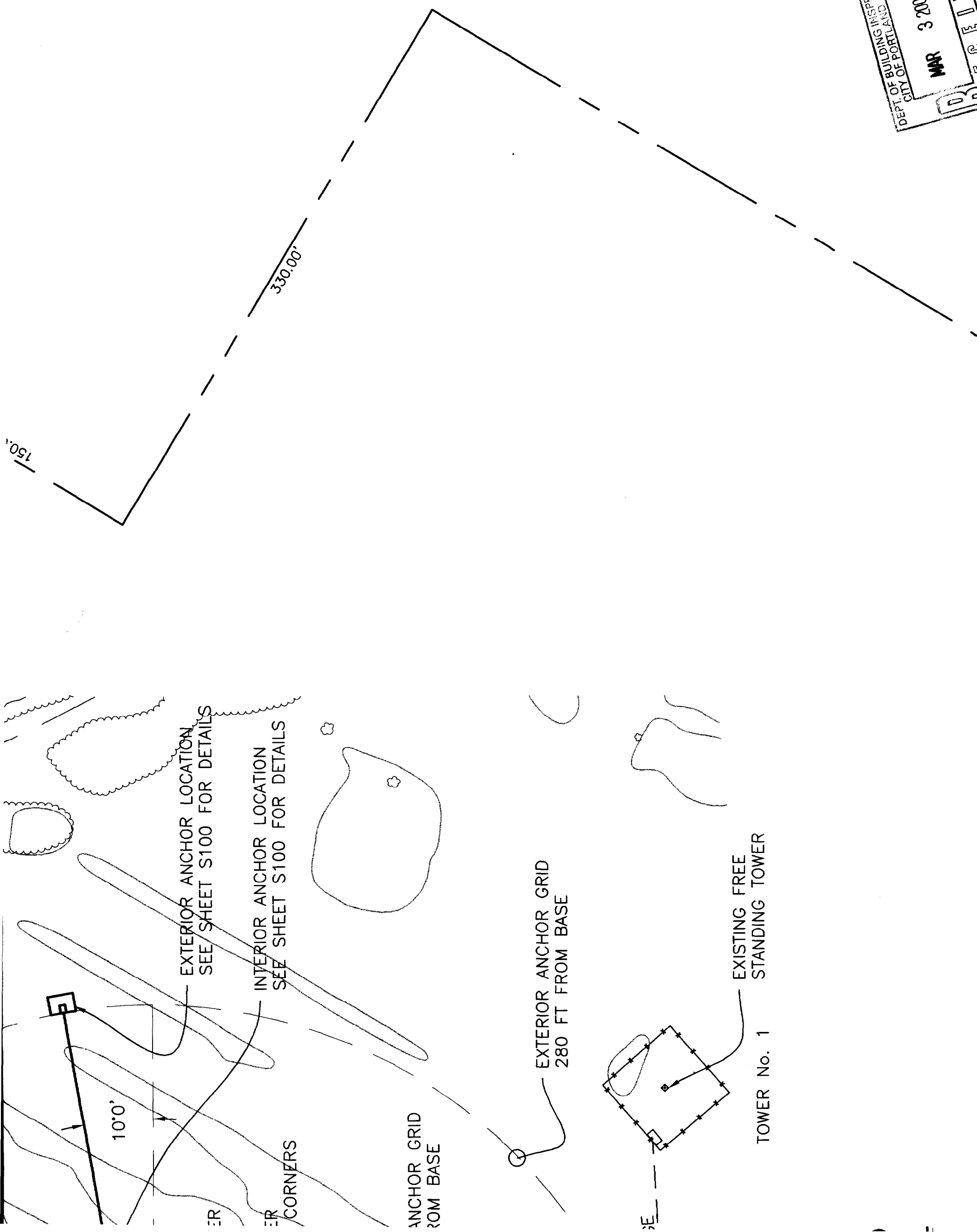
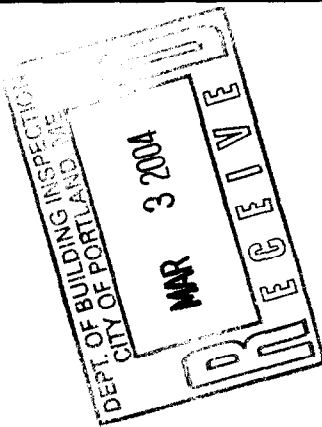
ROBERT
ARLEDGE, JR.
8708
REGISTERED
PROFESSIONAL ENGINEER

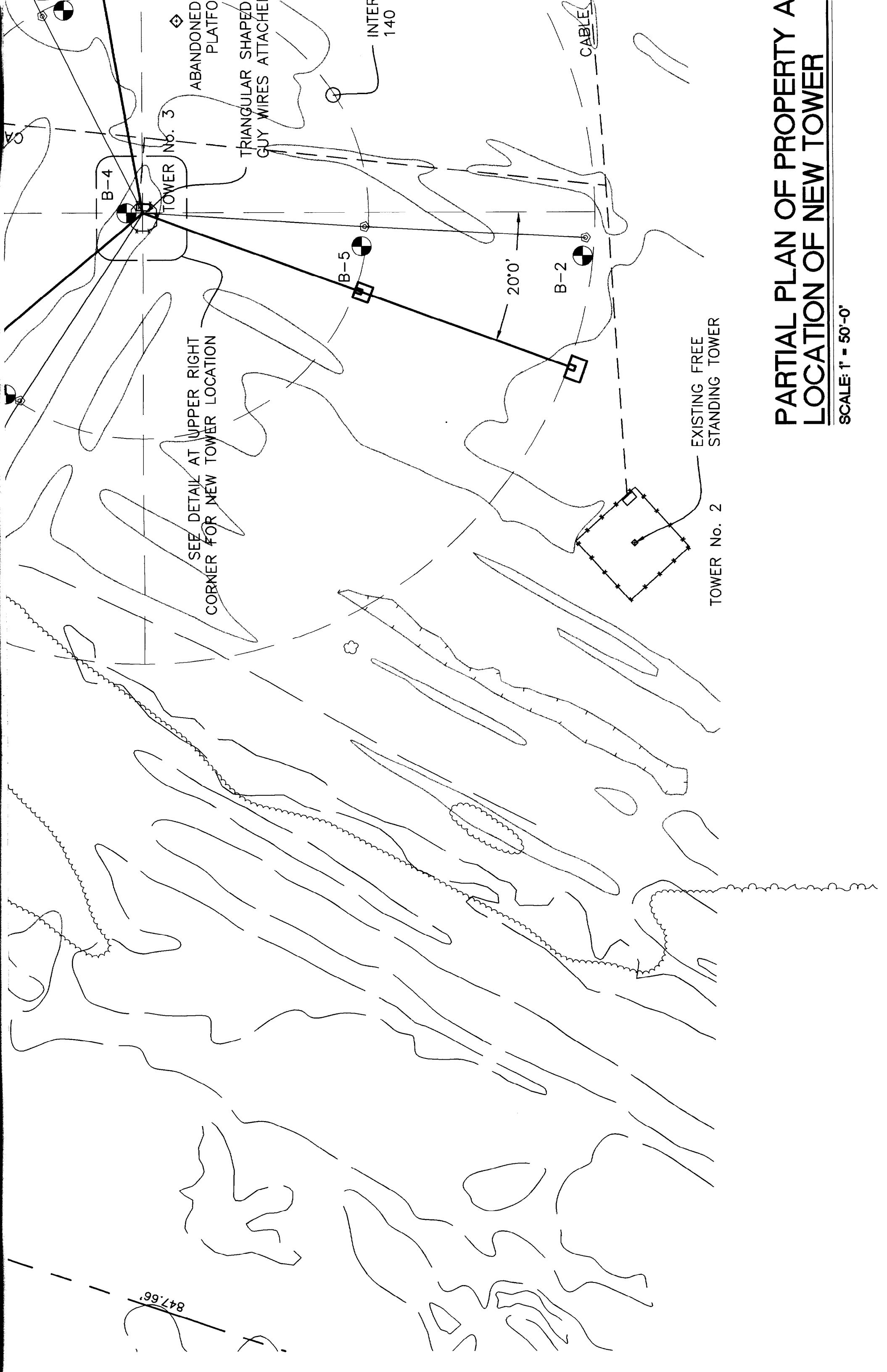
23 FEB 04

PROJECT: **WGAN TOWER RELOCATION**
 FOR: PORTLAND RADIO GROUP
 SHEET TITLE: **PARTIAL PLAN OF PROPOSED LOCATION OF NEW**

NO.	BY	DESCRIPTION	DATE
1	RCA	DRAWING ISSUED FOR CONSTRUCTION	02-12
2	RCA	NEW TOWER LOCATION PER PORTLAND RADIO GROUP	02-23
3			
4			

DATE : 02-12-04
 SCALE : AS NOTED
 DESIGN BY: R. ARLEDGE
 DRAWN BY: A. BENNETT
 FILE #: 04014-00-PR-C100.DWG
 PROJECT NUMBER:
04014
 SHEET NO:
C100





847.66'

SEE DETAIL AT UPPER RIGHT
CORNER FOR NEW TOWER LOCATION

TOWER No. 3

B-4

B-5

B-2

INTER
140

CABLE

ABANDONED
PLATFO

TRIANGULAR SHAPED
GUY WIRES ATTACHE

EXISTING FREE
STANDING TOWER

TOWER No. 2

PARTIAL PLAN OF PROPERTY A LOCATION OF NEW TOWER

SCALE: 1" = 50'-0"

