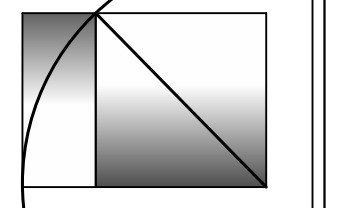
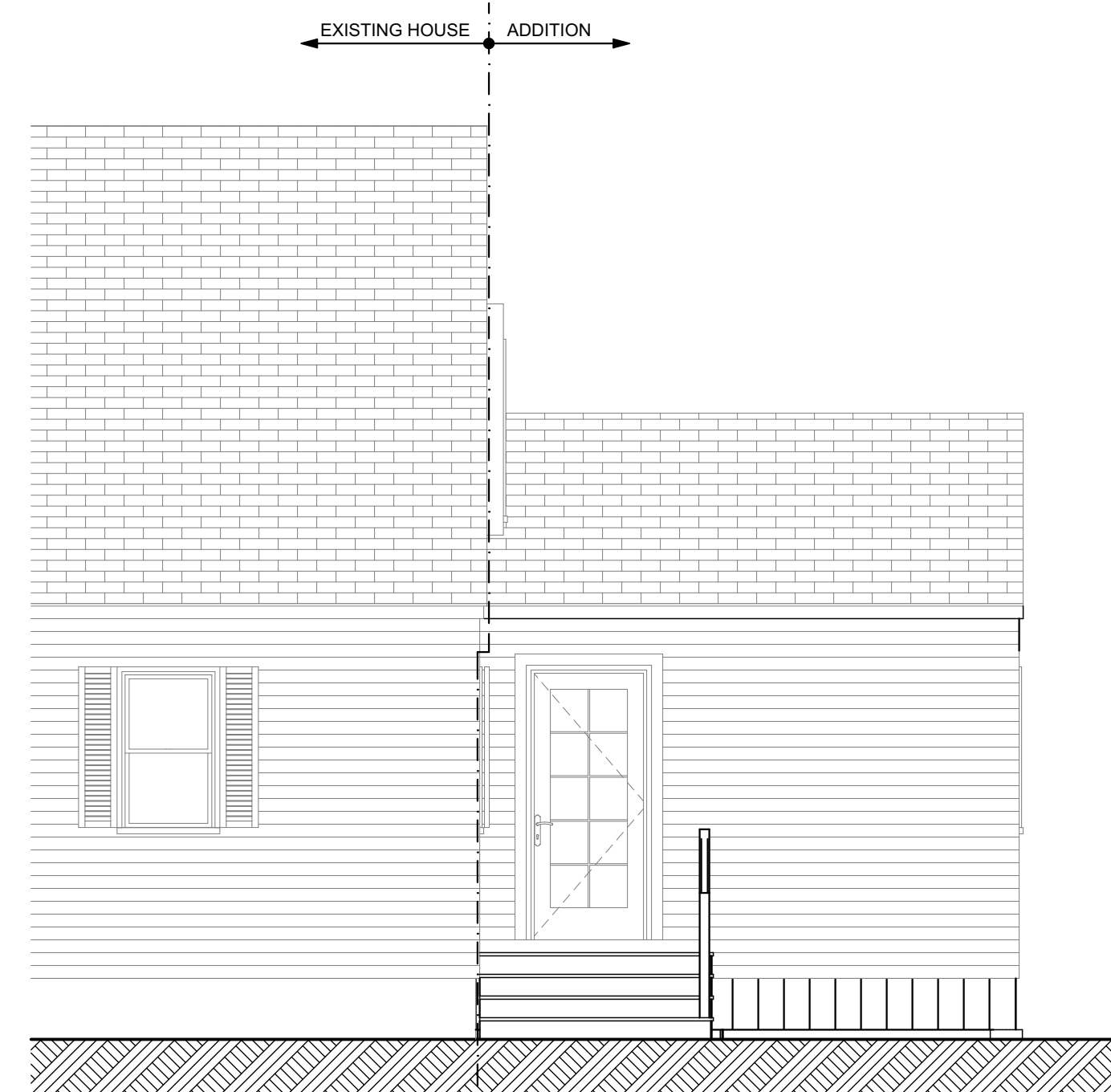


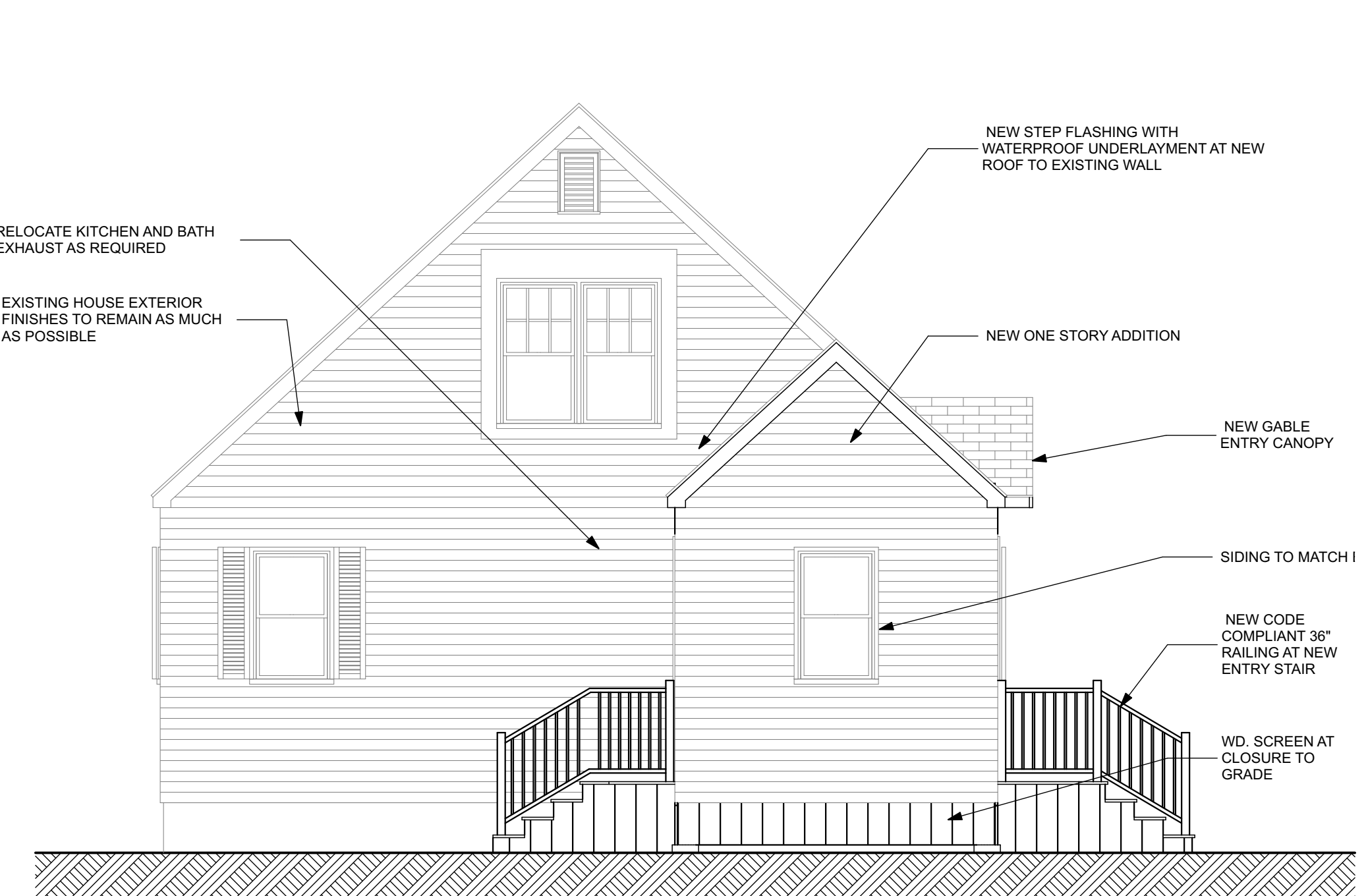
**WHIPPLE
 CALLENDER
 ARCHITECTS**



136 PLEASANT AVE.
 PORTLAND, ME 04103
 P 207.775.2696
 F 207.775.3631
 www.whipplecallender.com



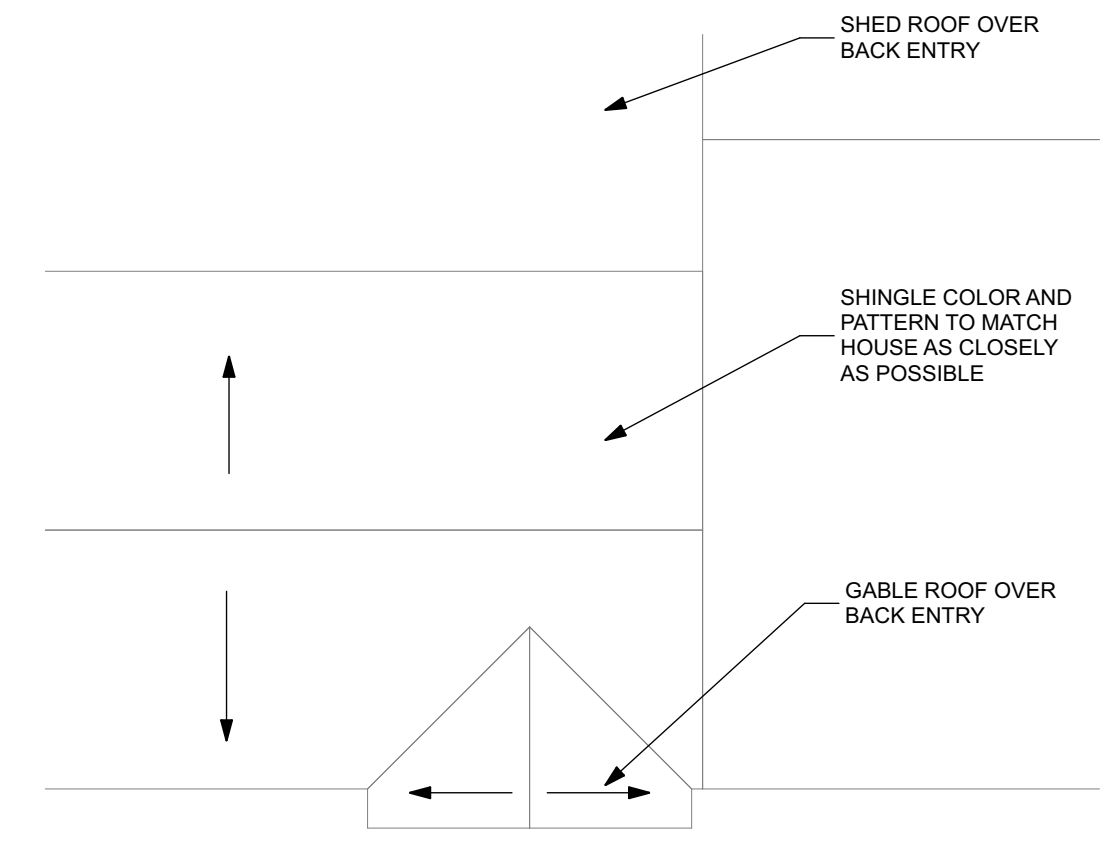
1 BACK ELEVATION
 SCALE: 1/4" = 1'-0"



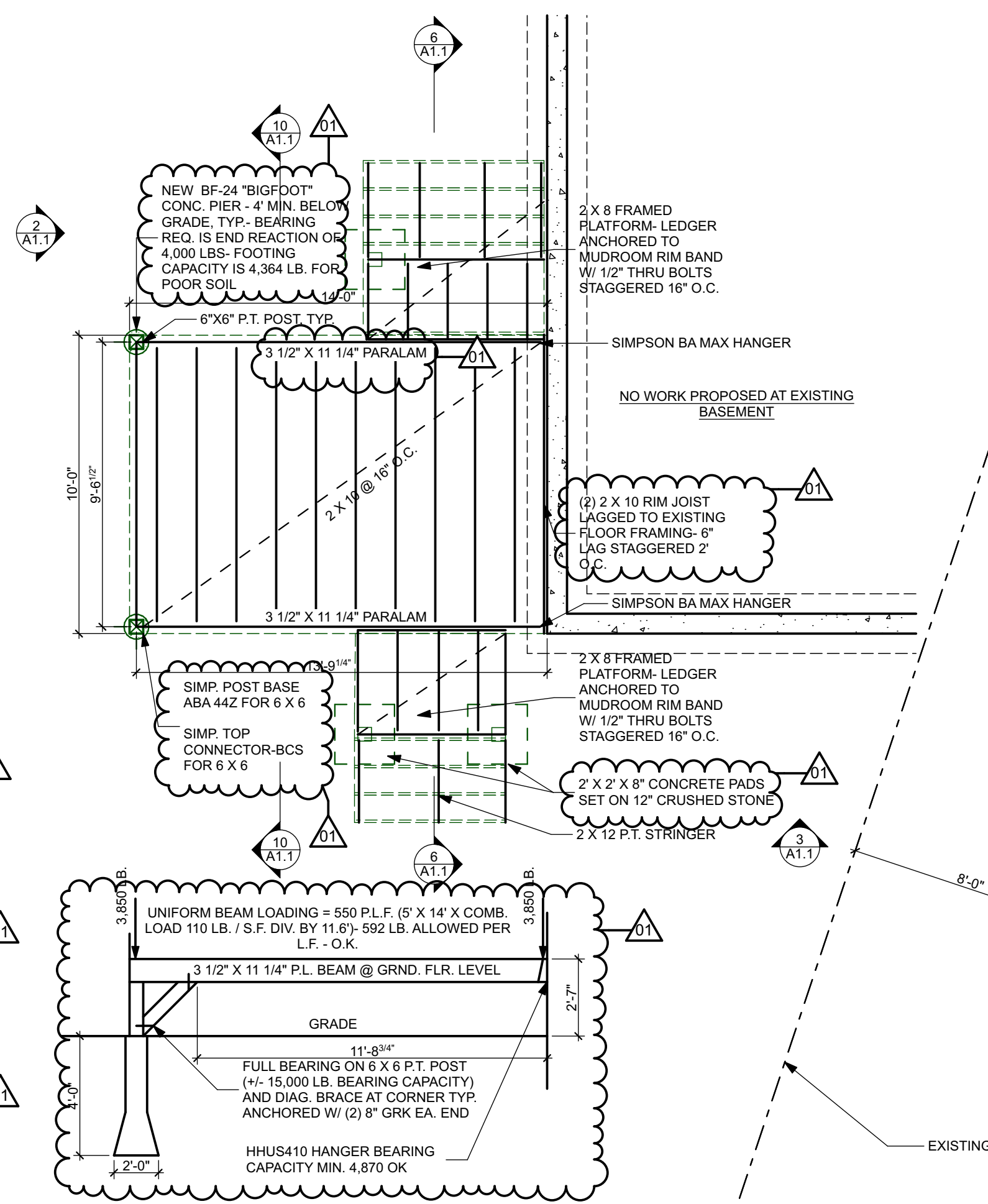
2 SIDE ELEVATION @ ADDITION
 SCALE: 1/4" = 1'-0"



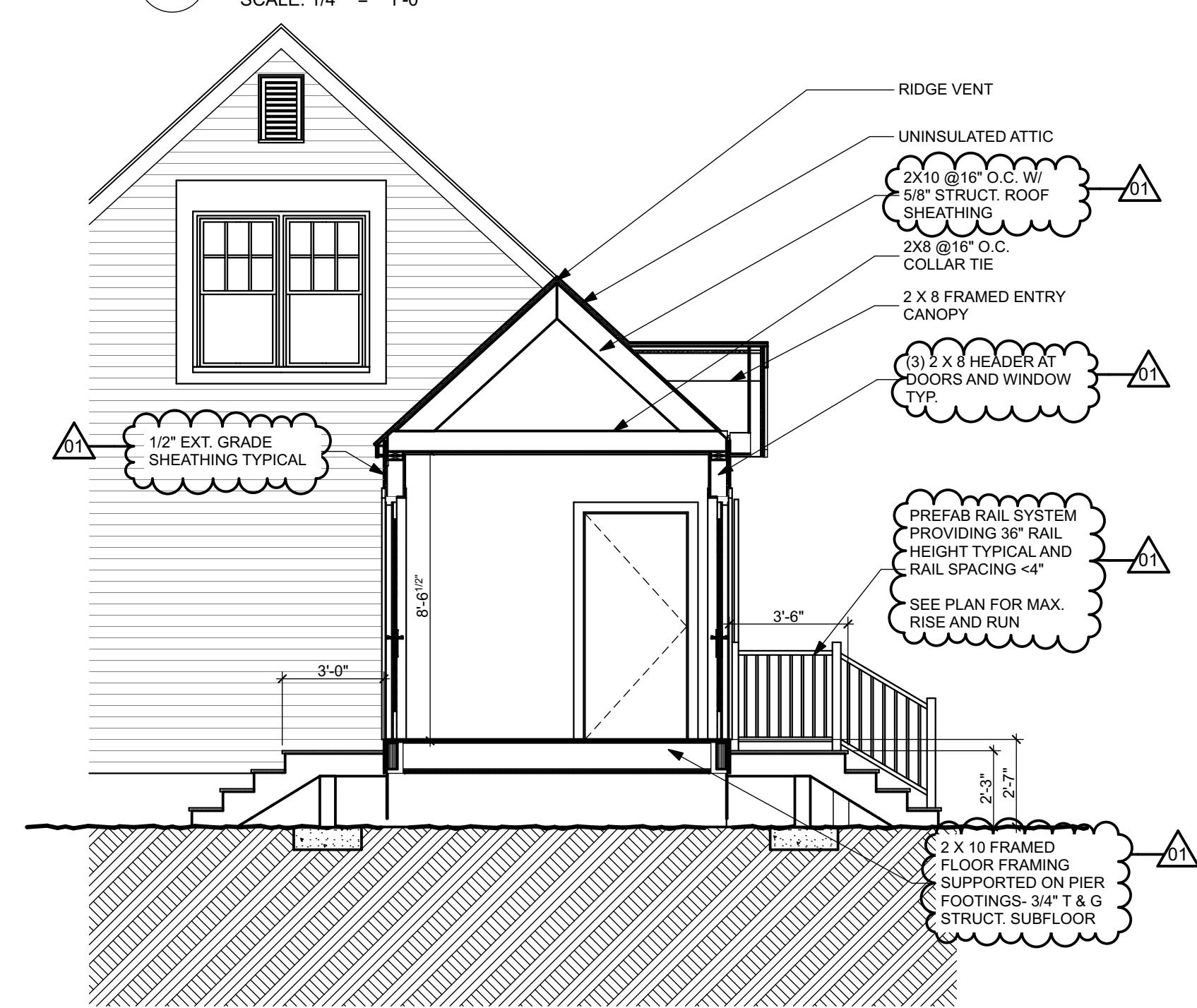
3 FRONT ELEVATION
 SCALE: 1/4" = 1'-0"



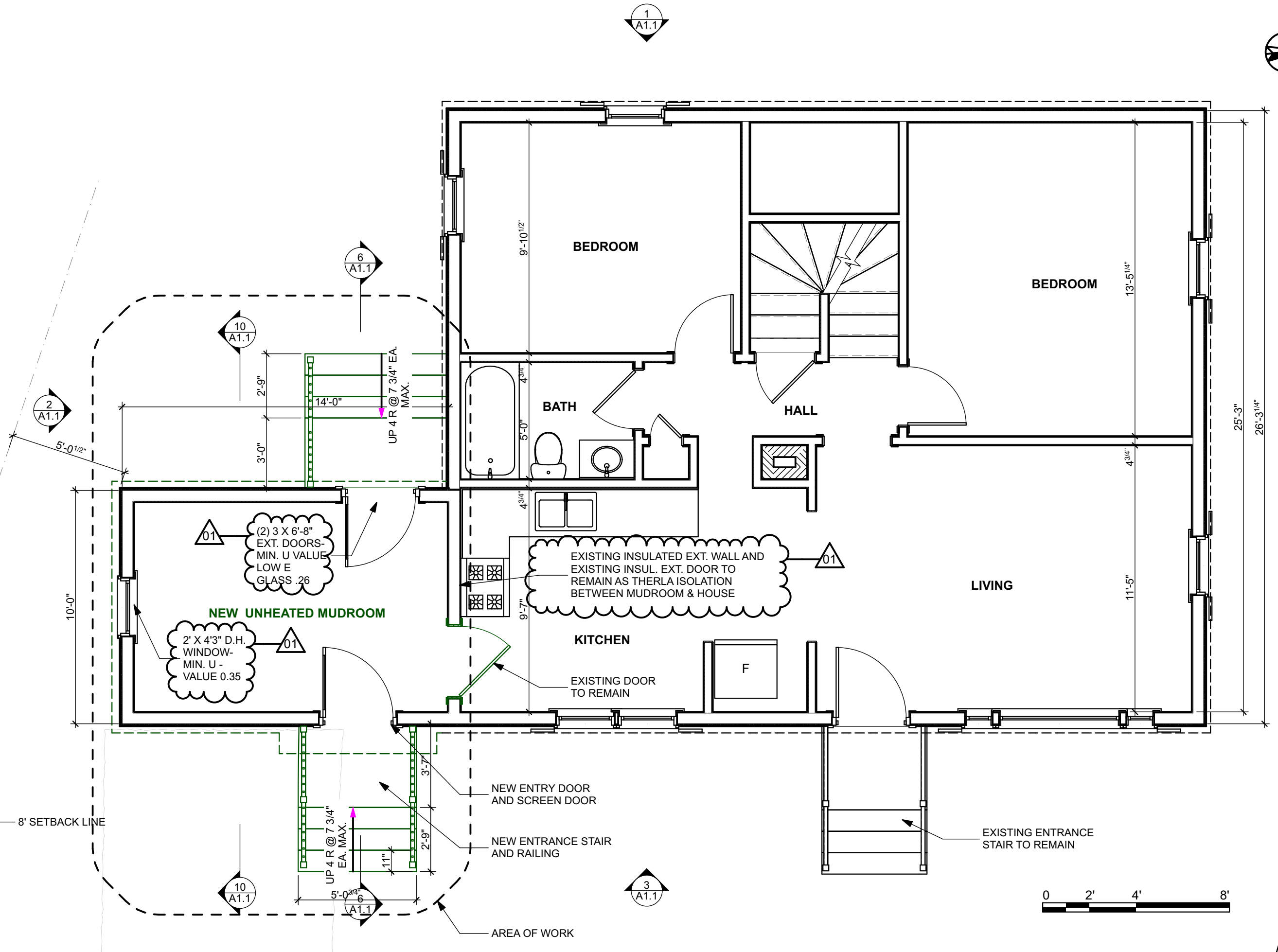
4 ROOF PLAN
 SCALE: 1/4" = 1'-0"



5 FOUND. & FLOOR FRAMING PLAN
 SCALE: 1/4" = 1'-0"



6 BUILDING SECTION @ STAIRS
 SCALE: 1/4" = 1'-0"



7 FIRST FLOOR PLAN
 SCALE: 1/4" = 1'-0"

MARK	DATE	DESCRIPTION
1	8.28.18	PERMIT CLARIFICATION NOTES ADDED

DATE:	9/10/18
CHECKED BY:	JAD
DRAWN BY:	CC
JOB:	2018 DB
SHEET TITLE:	FLOOR PLANS & ELEVATIONS

A1.1



How to Use This Table

1. Calculate total and live load (neglect beam weight) on the beam or header in pounds per linear foot (plf).
2. Select appropriate **Span** (center-to-center of bearing).
3. Scan horizontally to find the proper width and a depth which has a capacity that exceeds actual total and live loads.
4. Review bearing length requirements to ensure adequacy.

Reviewed for Code Compliance
Permitting and Inspections Department
Approved with Conditions

09/17/2018

Also see **General Notes** on page 21.

2.0E Parallam® PSL: Floor—100% (PLF)

Span	Condition	2 1/16" Width							3 1/2" Width						
		9 1/4"	9 1/2"	11 1/4"	11 1/8"	14"	16"	18"	9 1/4"	9 1/2"	11 1/4"	11 1/8"	14"	16"	18"
8'	Total Load	1,129	1,166	1,430	1,529	1,887	2,254	2,254	1,469	1,517	1,861	1,990	2,456	2,933	2,933
	Live Load L/360	898	966	*	*	*	*	*	1,169	1,257	*	*	*	*	*
	Min. End/Int. Bearing (in.)	2.3/5.6	2.3/5.8	2.9/7.1	3.1/7.6	3.8/9.4	4.5/11.3	4.5/11.3	2.3/5.6	2.3/5.8	2.9/7.1	3.1/7.6	3.8/9.4	4.5/11.3	4.5/11.3
9'-6"	Total Load	827	881	1,160	1,238	1,514	1,793	1,896	1,076	1,147	1,510	1,611	1,970	2,333	2,467
	Live Load L/360	556	600	959	1,111				724	780	1,248	1,446	*	*	*
	Min. End/Int. Bearing (in.)	2.0/4.9	2.1/5.2	2.8/6.9	2.9/7.3	3.6/9.0	4.3/10.6	4.5/11.3	2.0/4.9	2.1/5.2	2.8/6.9	2.9/7.3	3.6/9.0	4.3/10.6	4.5/11.3
10'	Total Load	714	771	1,091	1,164	1,420	1,678	1,800	930	1,003	1,420	1,514	1,848	2,184	2,342
	Live Load L/360	481	519	833	966	*	*	*	626	675	1,084	1,257	*	*	*
	Min. End/Int. Bearing (in.)	1.8/4.5	1.9/4.8	2.7/6.8	2.9/7.3	3.5/8.9	4.2/10.5	4.5/11.3	1.8/4.5	1.9/4.8	2.7/6.8	2.9/7.3	3.5/8.9	4.2/10.5	4.5/11.3
12'	Total Load	421	455	741	839	1,137	1,335	1,497	548	592	964	1,092	1,480	1,738	1,949
	Live Load L/360	286	308	500	582	921	1,323		372	401	651	758	1,198	1,721	*
	Min. End/Int. Bearing (in.)	1.5/3.5	1.5/3.5	2.2/5.6	2.5/6.3	3.4/8.5	4.0/10.0	4.5/11.3	1.5/3.5	1.5/3.5	2.2/5.6	2.5/6.3	3.4/8.5	4.0/10.0	4.5/11.3
14'	Total Load	266	288	474	554	840	1,083	1,276	347	375	616	721	1,093	1,409	1,660
	Live Load L/360	183	197	322	376	600	870	1,200	238	257	419	489	780	1,132	1,561
	Min. End/Int. Bearing (in.)	1.5/3.5	1.5/3.5	1.7/4.2	2.0/4.9	3.0/7.4	3.8/9.5	4.5/11.2	1.5/3.5	1.5/3.5	1.7/4.2	2.0/4.9	3.0/7.4	3.8/9.5	4.5/11.3
16'-6"	Total Load	162	175	291	341	553	775	971	210	228	379	444	720	1,009	1,263
	Live Load L/360	113	122	200	234	376	550	765	147	159	260	305	490	716	995
	Min. End/Int. Bearing (in.)	1.5/3.5	1.5/3.5	1.5/3.5	1.5/3.6	2.3/5.8	3.2/8.1	4.0/10.1	1.5/3.5	1.5/3.5	1.5/3.5	1.5/3.6	2.3/5.8	3.2/8.1	4.0/10.1
18'-6"	Total Load	113	123	206	242	395	583	769	147	160	268	315	514	759	1,000
	Live Load L/360	80	87	143	168	271	397	555	105	113	186	218	352	517	722
	Min. End/Int. Bearing (in.)	1.5/3.5	1.5/3.5	1.5/3.5	1.5/3.5	1.9/4.7	2.7/6.8	3.6/9.0	1.5/3.5	1.5/3.5	1.5/3.5	1.5/3.5	1.9/4.7	2.7/6.8	3.6/9.0
20'	Total Load	88	96	162	191	312	464	653	115	125	210	248	407	603	850
	Live Load L/360	64	69	114	133	216	318	445	83	90	148	174	281	414	579
	Min. End/Int. Bearing (in.)	1.5/3.5	1.5/3.5	1.5/3.5	1.5/3.5	1.6/4.0	2.4/5.9	3.3/8.3	1.5/3.5	1.5/3.5	1.5/3.5	1.5/3.5	1.6/4.0	2.4/5.9	3.3/8.3
22'	Total Load	64	70	120	141	234	349	494	84	91	156	184	304	454	642
	Live Load L/360	48	52	86	101	164	241	339	63	68	112	131	213	314	441
	Min. End/Int. Bearing (in.)	1.5/3.5	1.5/3.5	1.5/3.5	1.5/3.5	1.5/3.5	2.0/4.9	2.8/6.9	1.5/3.5	1.5/3.5	1.5/3.5	1.5/3.5	1.5/3.5	2.0/4.9	2.8/6.9
24'	Total Load		52	90	107	179	268	381	62	68	118	140	232	349	496
	Live Load L/360		40	66	78	127	187	264	48	52	86	102	165	244	343
	Min. End/Int. Bearing (in.)		1.5/3.5	1.5/3.5	1.5/3.5	1.5/3.5	1.7/4.2	2.4/5.9	1.5/3.5	1.5/3.5	1.5/3.5	1.5/3.5	1.5/3.5	1.7/4.2	2.4/5.9
26'	Total Load			69	82	139	209	299		51	90	107	180	272	389
	Live Load L/360			52	61	100	148	209		41	68	80	130	193	272
	Min. End/Int. Bearing (in.)			1.5/3.5	1.5/3.5	1.5/3.5	1.5/3.6	2.0/5.1		1.5/3.5	1.5/3.5	1.5/3.5	1.5/3.5	1.5/3.6	2.0/5.1
28'	Total Load			54	64	109	166	238			70	84	142	216	310
	Live Load L/360			42	49	80	119	169			55	64	105	155	219
	Min. End/Int. Bearing (in.)			1.5/3.5	1.5/3.5	1.5/3.5	1.5/3.5	1.8/4.4			1.5/3.5	1.5/3.5	1.5/3.5	1.5/3.5	1.8/4.4
30'	Total Load				50	87	133	192			55	66	113	173	249
	Live Load L/360				40	65	97	138			44	52	85	127	179
	Min. End/Int. Bearing (in.)				1.5/3.5	1.5/3.5	1.5/3.5	1.5/3.9			1.5/3.5	1.5/3.5	1.5/3.5	1.5/3.5	1.5/3.9
32'	Total Load											52	91	140	203
	Live Load L/360											43	70	105	148
	Min. End/Int. Bearing (in.)											1.5/3.5	1.5/3.5	1.5/3.5	1.5/3.5

* Indicates Total Load value controls.



Reviewed for Code Compliance
Permitting and Inspections Department
Approved with Conditions

09/17/2018

TABLE BFS-T102 UNITED STATES

Allowable Gravity Loads on BIGFOOT Systems® Footing Forms Models BF20, BF24, BF28 and BF36

Soil Description	Allowable Soil Bearing Pressure psf (kPa)	Model BF20 Allowable Loads lbs (kN)	Model BF24 Allowable Loads lbs (kN)	Model BF28 Allowable Loads lbs (kN)	Model BF36 Allowable Loads lbs (kN)
Clay, Sandy Clay, Silty Clay and Clayey Silt	2000 (95.76)	4364 (19.4)	6283 (27.9)	8560 (38.1)	14134.50 (62.82)
Sand, Silty Sand Clayey Sand Silty Gravel, and Clayey Gravel	3000 (143.64)	6546 (29.1)	9425 (41.9)	12840 (57.1)	21201.75 (94.23)
Sandy Gravel or Gravel	5000 (239.40)	10910 (48.5)	15,708 (69.9)	21400 (95.2)	35336.25 (157.05)
Sedimentary Rock	6000 (287.28)	13092 (58.2)	18,850 (83.8)	25680 (114.2)	42403.50 (188.46)
Crystalline Bedrock	12,000 (574.56)	26184 (116.5)	37,699 (167.7)	51360 (228.4)	84804.75 (376.91)





09/17/2018

Notes:

- 1) *The allowable gravity loads shown meet or exceed the requirements of the Canadian National Building Code, Section 9.4.4.1.*
- 2) *Minimum concrete compressive strength shall be 3000 psi (20.7 MPa) at 28 days.*
- 3) *Calculations are in accordance with CSA A23.3-M77 which is equivalent to ACI 318.95.*
- 4) *Gravity loads include only dead loads (weight of construction materials) and service loads such as snow loads and rain loads. Pier design and their ability to resist lateral and uplift loads is beyond the scope of this table.*
- 5) *Piers requiring design for earthquake loads shall be designed by a qualified Professional Engineer.*
- 6) *Maximum lift when pouring concrete is 16" (40.6 cm)*
- 7) *Allowable loads shown are for use in the U.S. and are based on soil bearing pressure values provided by BOCA. Canadian users should refer to table BFS-T101, (Canada).*
- 8) *Bigfoot Systems® Footing Forms are not intended as a substitute foundation system for the full foundations commonly used under residential housing unless they have been designed to do so by a qualified professional engineer.*

