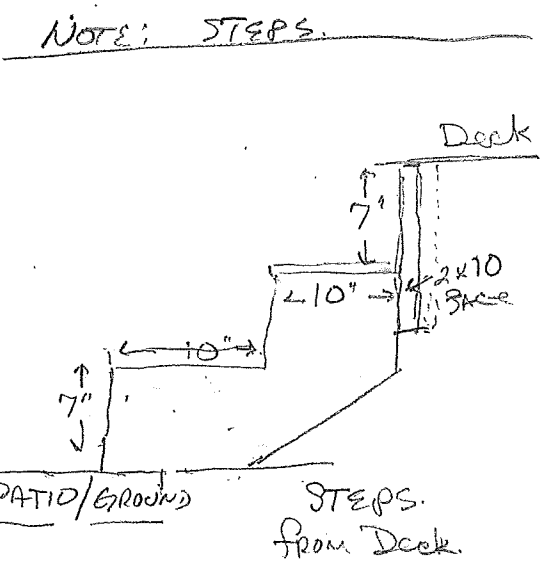
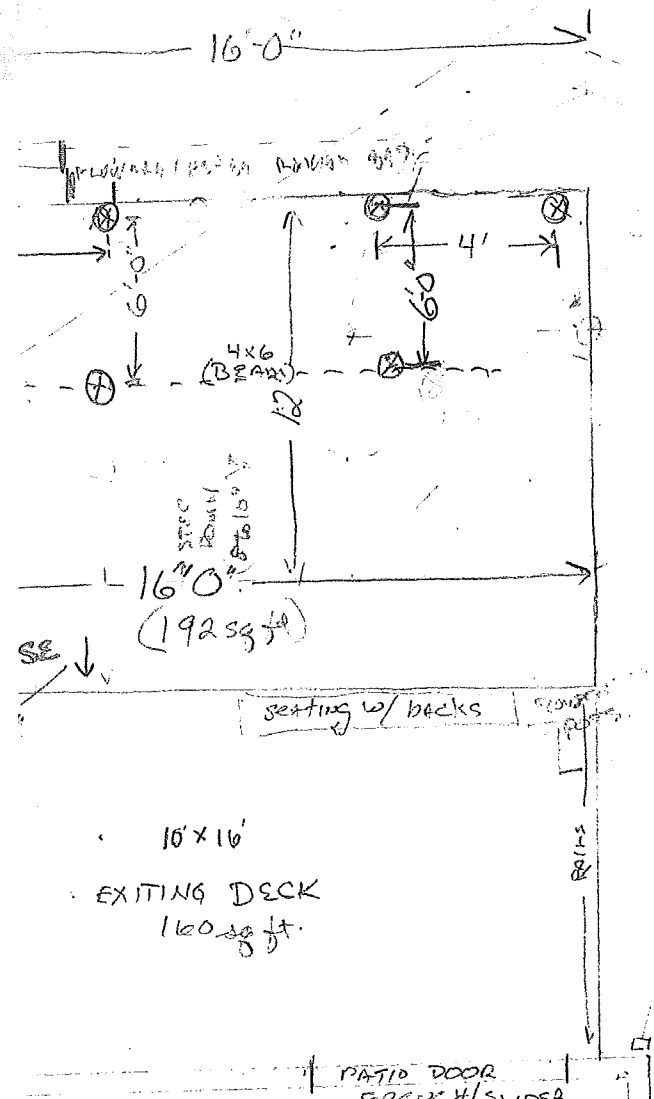
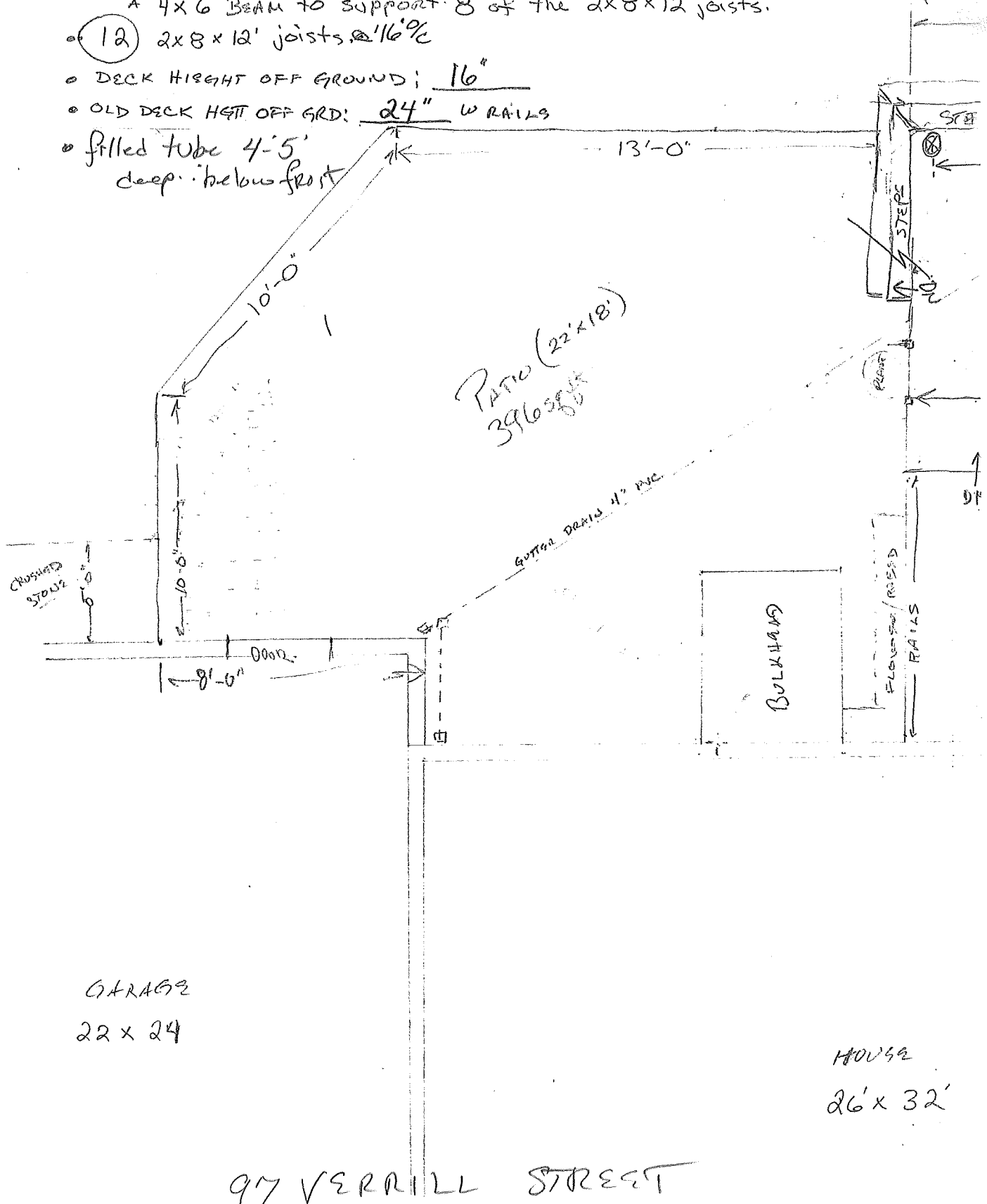


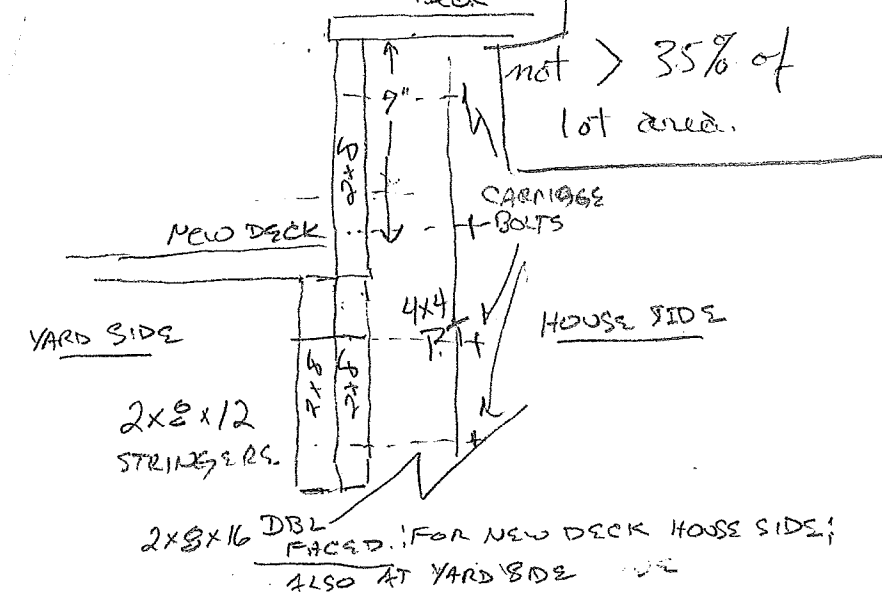
NOTES: FOUNDATION SYSTEM:

- 8" concrete filled tube; spaced @ 4'-0" % from each outside corner
- interior tubes; spaced @ 6'-0" % from outer/inside tubes.
- each tube will have 4x4 posts resting on top of concrete.
- interior tubes will have 4x4 posts resting on concrete AND a 4x6 BEAM to support 8 of the 2x8x12 joists.
- 12 2x8x12 joists @ 16" %
- DECK HEIGHT OFF GROUND; 16"
- OLD DECK HGT OFF GRD: 24" w RAILS
- filled tube 4'-5' deep below frost



NOTE: 1/2" x 8" carriage bolts
1/2" x 10" carriage bolts.

to connect to existing deck through fascia 2x10x16' (dbl)
* New deck dropped to make one step length of deck
25' rear portion
14' ea. side
not > 35% of lot area.



Scale: 1/4" = 1'-0" BY: M/ME
DATE: 4.30.2011
26' x 32' GARRISOYS
Deck: 10' x 16' & 12' x 16' w/ rails
PATIO: 22' x 18' 396 sq ft (100' x 12')