

ARCHITECT
SEMPLER & DRANE ARCHITECTS
496 CONGRESS STREET
PORTLAND, MAINE 04101
TEL: (207) 781-4231 FAX: 774-0152
SDA@semplerdrane.com

ENGINEERING
Athena Engineering
169 Veranda Street
Portland, Maine 04103
TEL: (207) 781-2338
WWW.ATHENA-ENG.COM

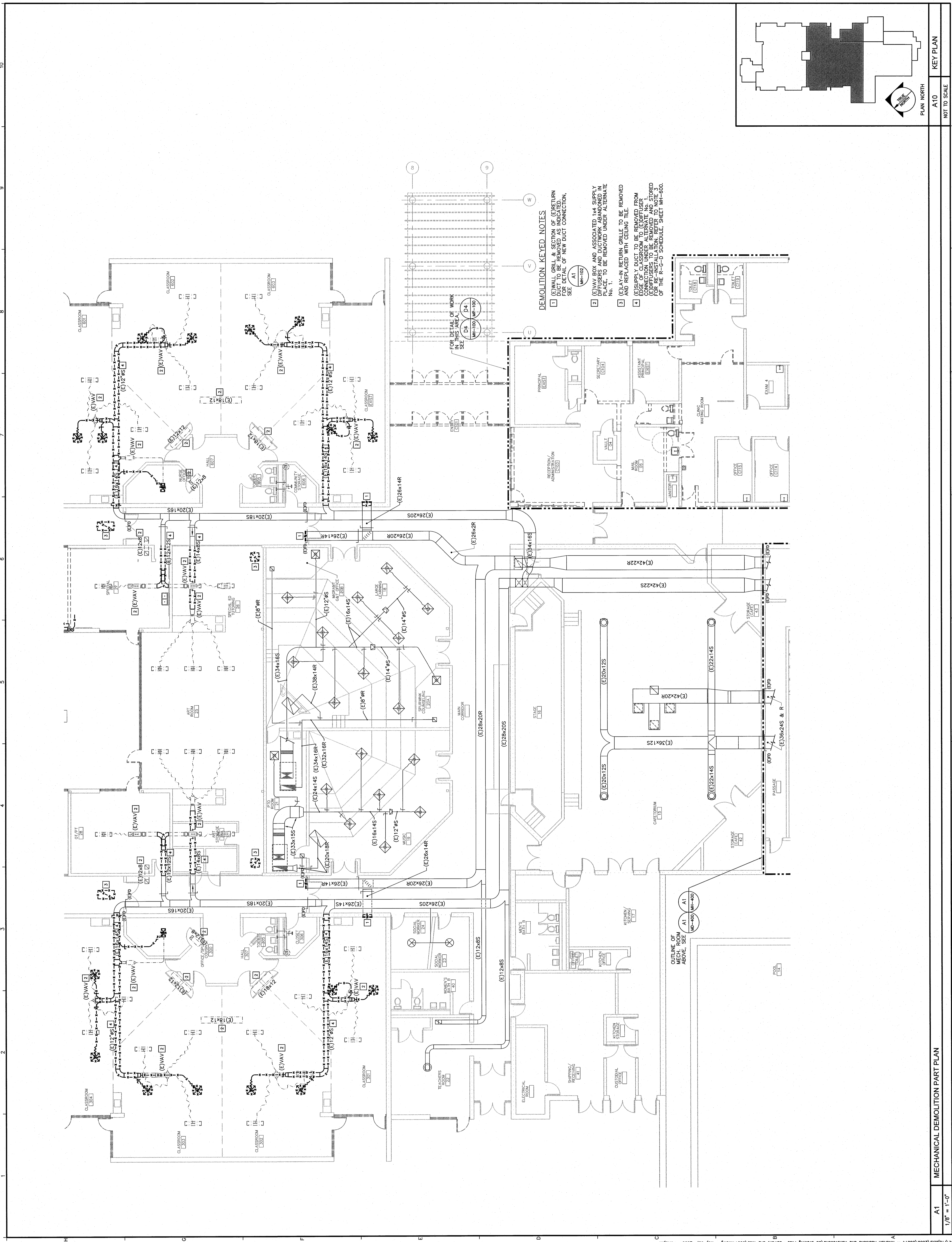
OWNER
CITY OF PORTLAND

PROJECT
RIVERTON EXPANSION AND
RENOVATION PROJECT
1600 FOREST AVE. PORTLAND, ME. 04103

DRAWING
MECHANICAL DEMOLITION PART PLAN
REVISIONS:

SCALE: AS NOTED
DATE: 05/09/08
CAD FILE: 08014M.DWG

SHEET
MD-101



- DEMOLITION KEYED NOTES**
- (E) VAV TO BE REMOVED FROM SECTION AND RETURN TO PLACE FOR DETAIL OF NEW DUCT CONNECTION. SEE (A1) WH-107.
 - (E) VAV BOX AND ASSOCIATED 14" DEPTH SUPPLY DUCT TO BE REMOVED FROM RETURN PLACE TO BE REMOVED UNDER ALTERNATE No. 1.
 - (E) LAY-IN RETURN GRILLE TO BE REMOVED AND REPLACED WITH CEILING TILE.
 - (E) SUPPLY DUCT TO BE REMOVED FROM CONNECTION UNDER ALTERNATE No. 1. REPAIRS TO BE REFERRED TO NOTED OF THE R-C-D SCHEDULE, SHEET WH-600.

OUTLINE OF MECH. ROOM ABOVE. SEE (A1) WH-600 (WH-100)

A1
1/8" = 1'-0"
MECHANICAL DEMOLITION PART PLAN
KEY PLAN
A10
PLAN NORTH
NOT TO SCALE