

ARCHITECT:  
**TEMPLE & DRANE ARCHITECTS**  
 96 CONGRESS STREET  
 PORTLAND, MAINE 04101  
 TEL. (207) 761-4231 FAX: 774-0152  
 SDA@templdrane.com

OWNER:  
**CITY OF PORTLAND**

PROJECT:  
**RIVERTON ELEMENTARY SCHOOL / COMMUNITY CENTER / ADDITIONS AND RENOVATIONS**  
 1600 FOREST AVE.  
 PORTLAND, ME. 04103

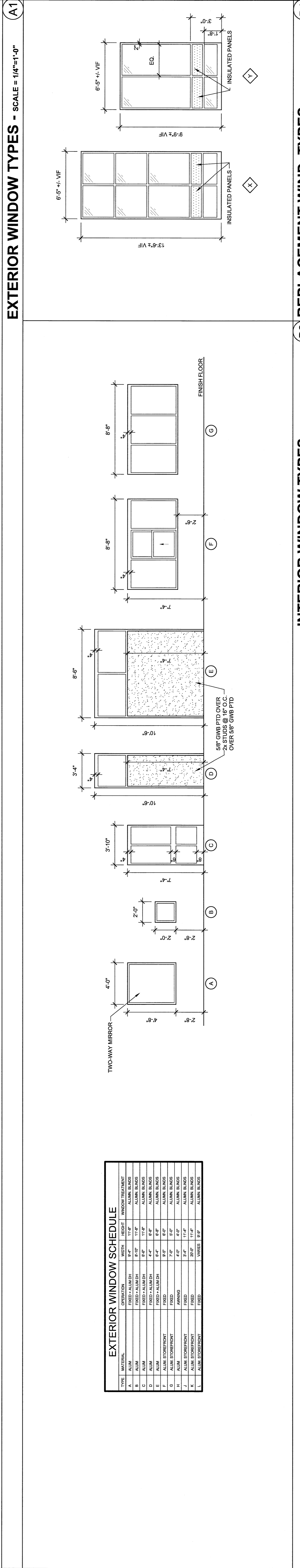
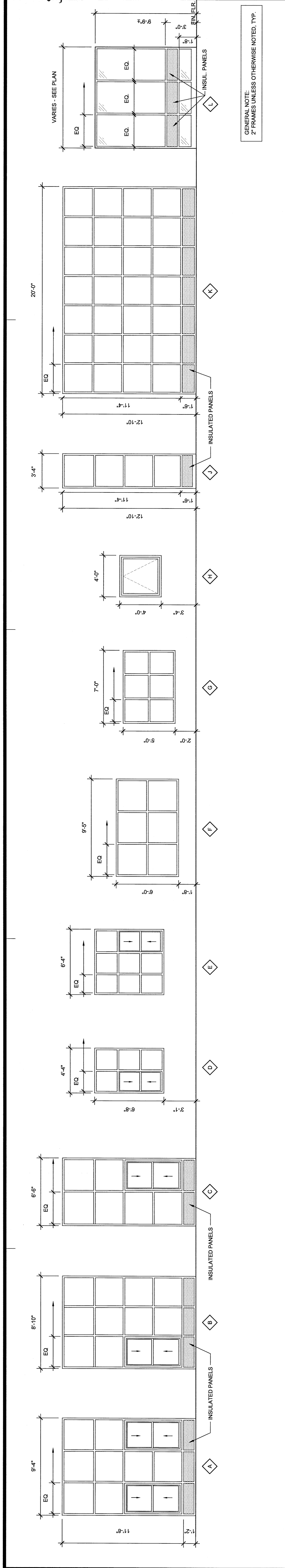
DRAWING:  
**WINDOWS & MISC. DETAILS**

REVISIONS:

SCALE: AS NOTED

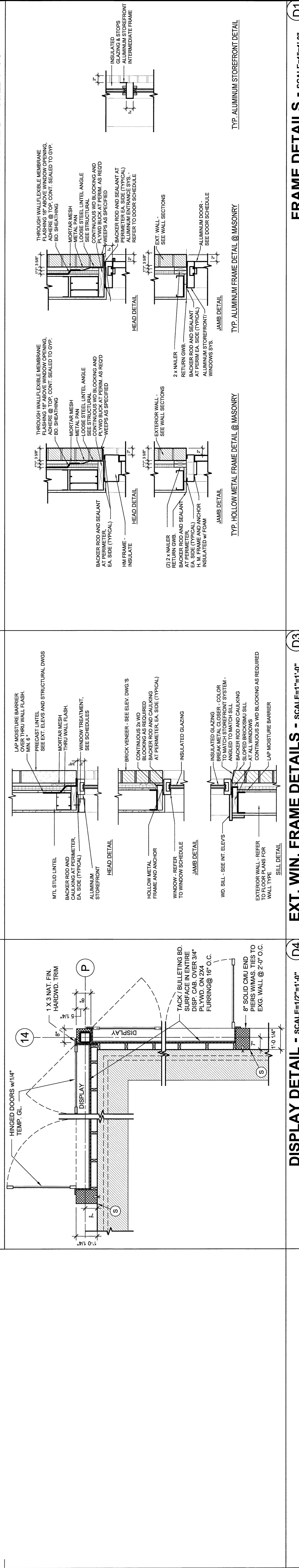
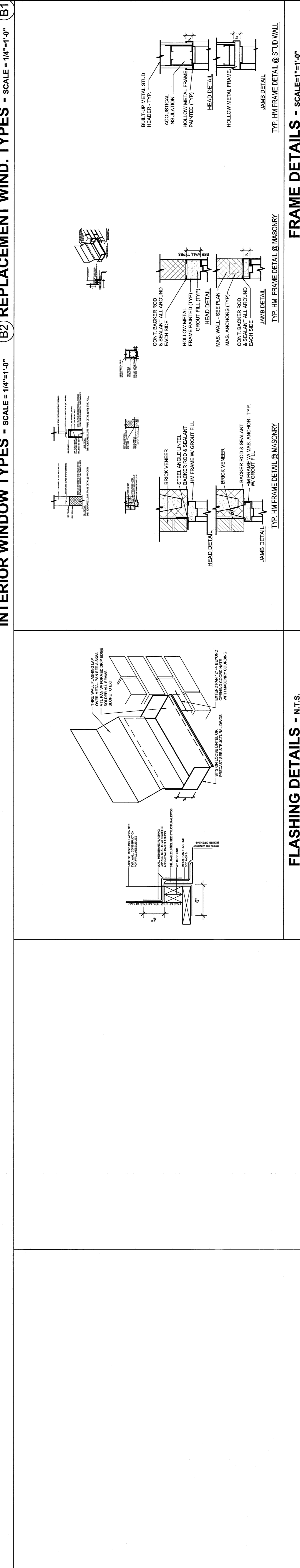
DATE: 05/09/06

SHEET:  
**A501**



**EXTERIOR WINDOW SCHEDULE**

TYPE	MATERIAL	FINISH	OPERATION	GLAZING
A	ALUM.	ANODIZED	FIXED	ALUMINUM BLINDS
B	ALUM.	ANODIZED	FIXED	ALUMINUM BLINDS
C	ALUM.	ANODIZED	FIXED	ALUMINUM BLINDS
D	ALUM.	ANODIZED	FIXED	ALUMINUM BLINDS
E	ALUM.	ANODIZED	FIXED	ALUMINUM BLINDS
F	ALUM.	ANODIZED	FIXED	ALUMINUM BLINDS
G	ALUM.	ANODIZED	FIXED	ALUMINUM BLINDS
H	ALUM.	ANODIZED	FIXED	ALUMINUM BLINDS
I	ALUM.	ANODIZED	FIXED	ALUMINUM BLINDS
J	ALUM.	ANODIZED	FIXED	ALUMINUM BLINDS
K	ALUM.	ANODIZED	FIXED	ALUMINUM BLINDS
L	ALUM.	ANODIZED	FIXED	ALUMINUM BLINDS



SCALE: AS NOTED

DATE: 05/09/06

SHEET: A501

DRAWING: WINDOWS & MISC. DETAILS

PROJECT: RIVERTON ELEMENTARY SCHOOL / COMMUNITY CENTER / ADDITIONS AND RENOVATIONS

OWNER: CITY OF PORTLAND

ARCHITECT: TEMPLE & DRANE ARCHITECTS