

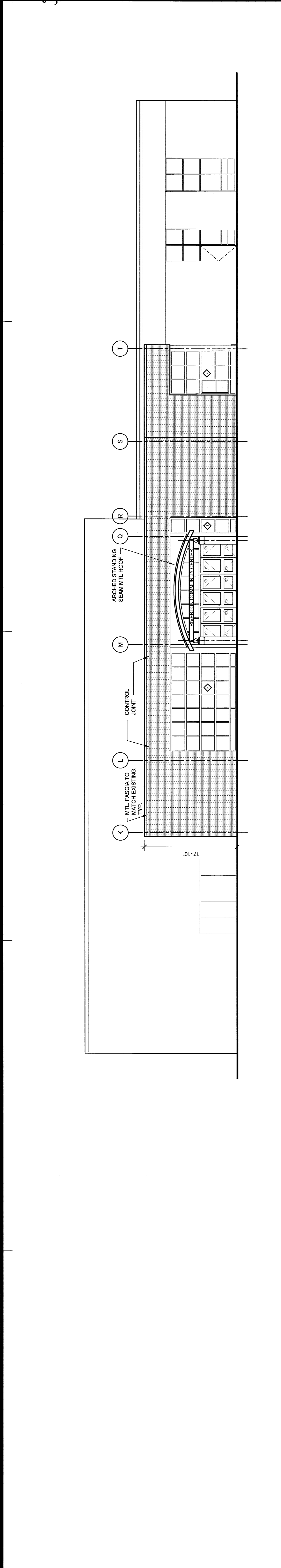
ARCHITECT:
SEMPLE & DRANE ARCHITECTS
486 CONGRESS STREET
PORTLAND, MAINE 04101
TEL: (207) 761-4231 FAX: 774-0152
SDA@sempledrane.com

CITY OF PORTLAND
OWNER:

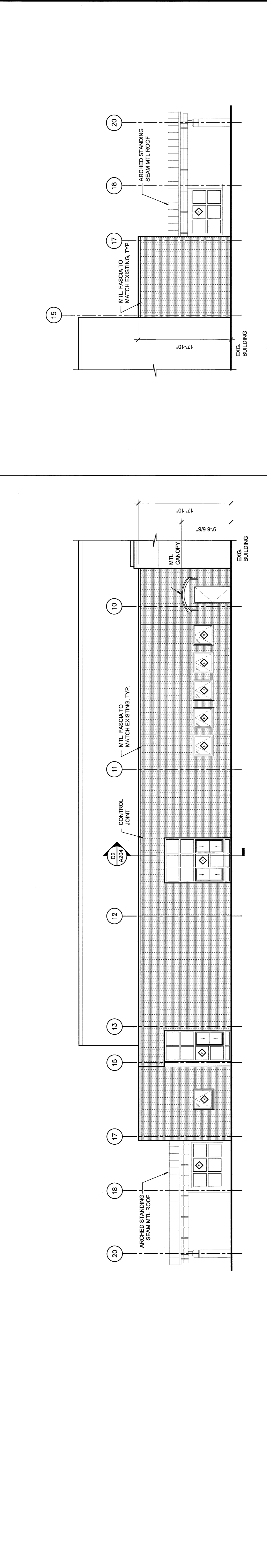
PROJECT:
RIVERTON ELEMENTARY SCHOOL
ADDITIONS AND RENOVATIONS
1600 FOREST AVE.
PORTLAND, ME. 04103

DRAWING:
EXTERIOR ELEVATIONS
REVISIONS:
DATE: 05/09/08
SCALE: 1/8" = 1'-0"

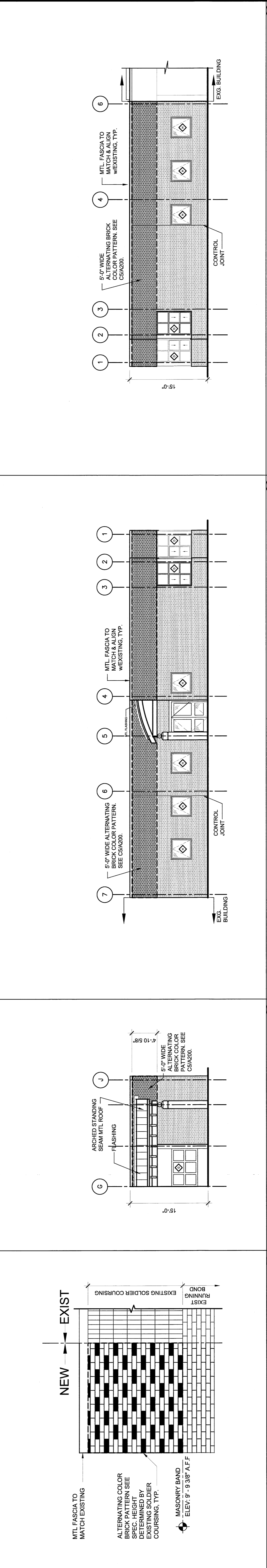
SHEET:
A200



COMMUNITY ENTRANCE - WEST (A1)

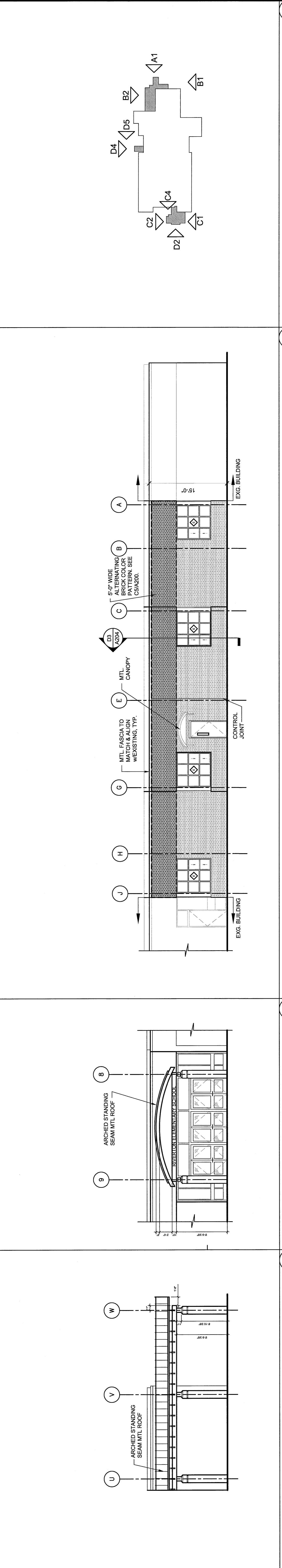


COMMUNITY ENTRANCE - SOUTH (B1)



COMMUNITY ENTRANCE - NORTH (B2)

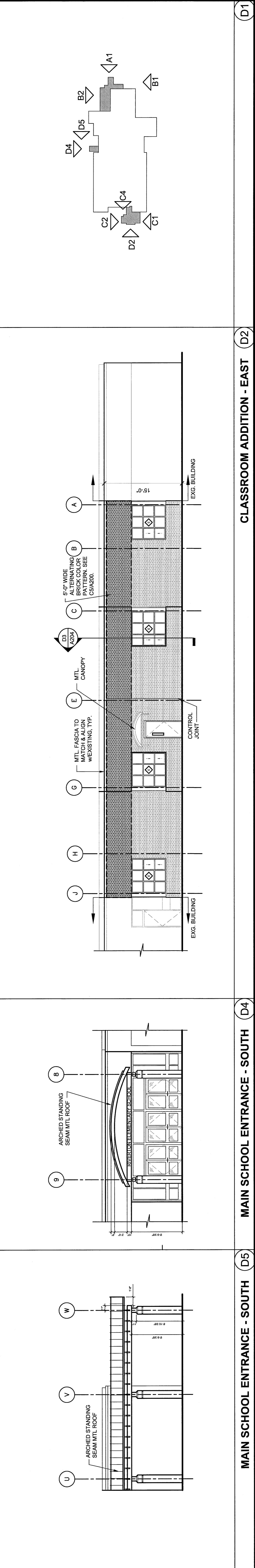
CLASSROOM ADDITION - NORTH (C1)



CLASSROOM ADDITION - SOUTH (C2)

CLASSROOM ADDITION - WEST (C4)

CLASSROOM ADDITION - EAST (D2)

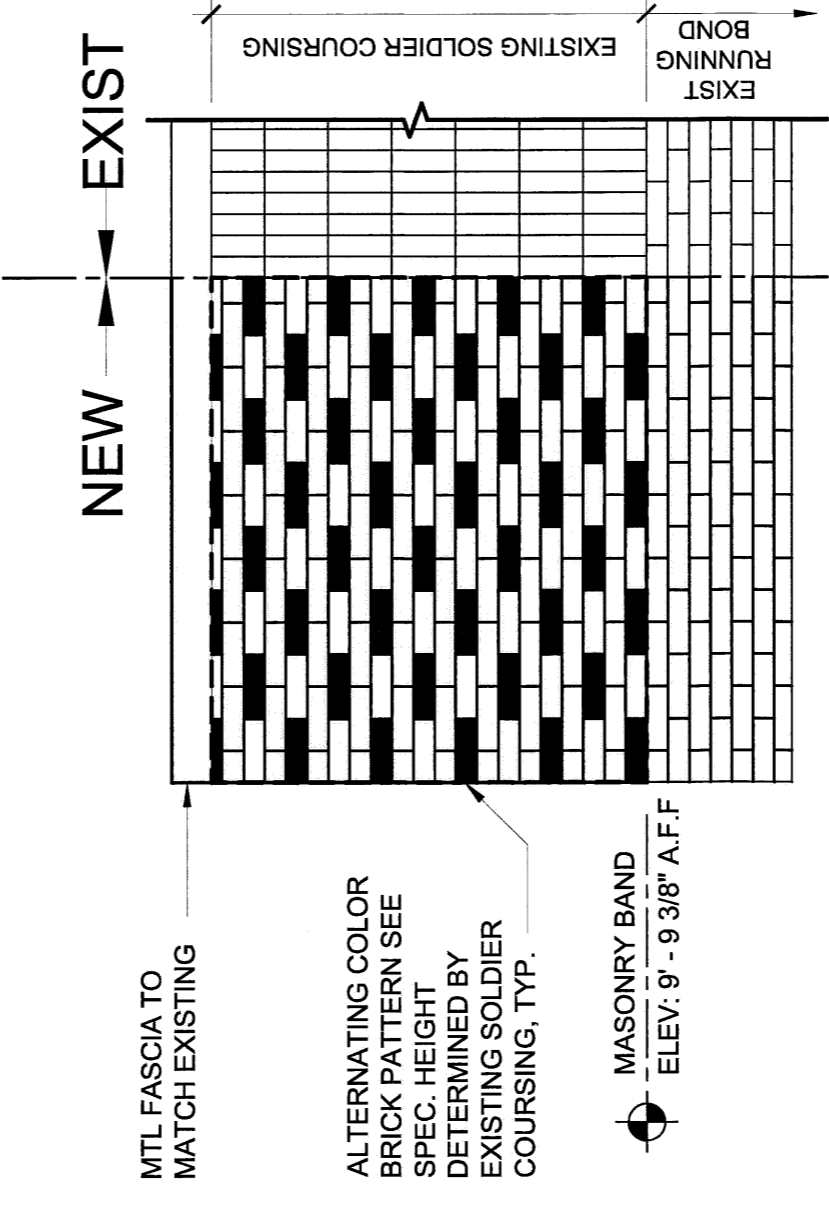


MAIN SCHOOL ENTRANCE - SOUTH (D4)

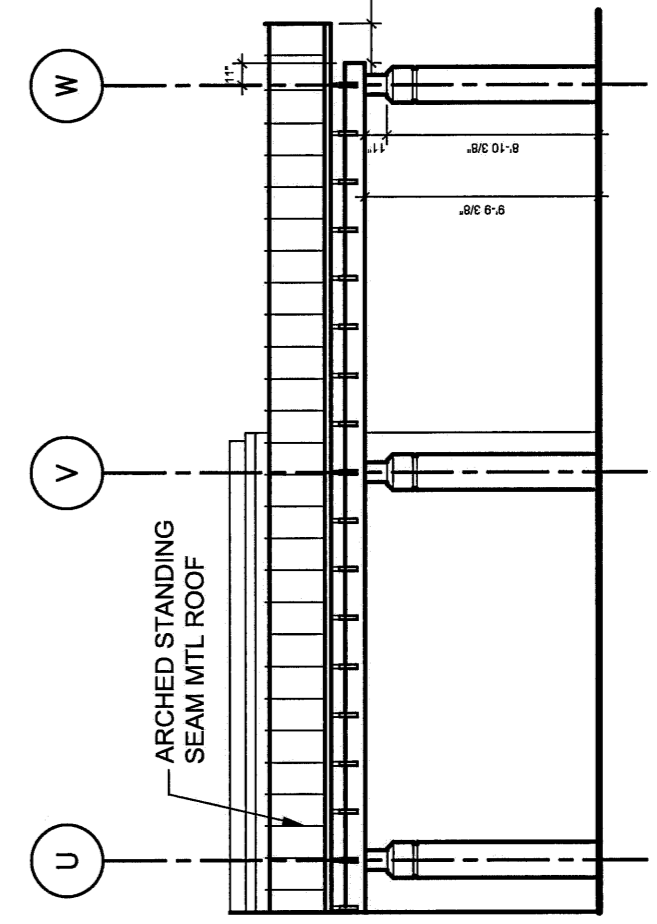
MAIN SCHOOL ENTRANCE - NORTH (D1)

MAIN SCHOOL ENTRANCE - WEST (D3)

MAIN SCHOOL ENTRANCE - EAST (D5)



BRICK HATCH PATTERN (C5)



MAIN SCHOOL ENTRANCE - SOUTH (D5)