

ARCHITECT:
SEMPLE & DRANE ARCHITECTS
498 CONGRESS STREET
PORTLAND, MAINE 04101
TEL: (207) 761-4231 FAX: 774-0152
SDA@sempledrane.com

CITY OF PORTLAND

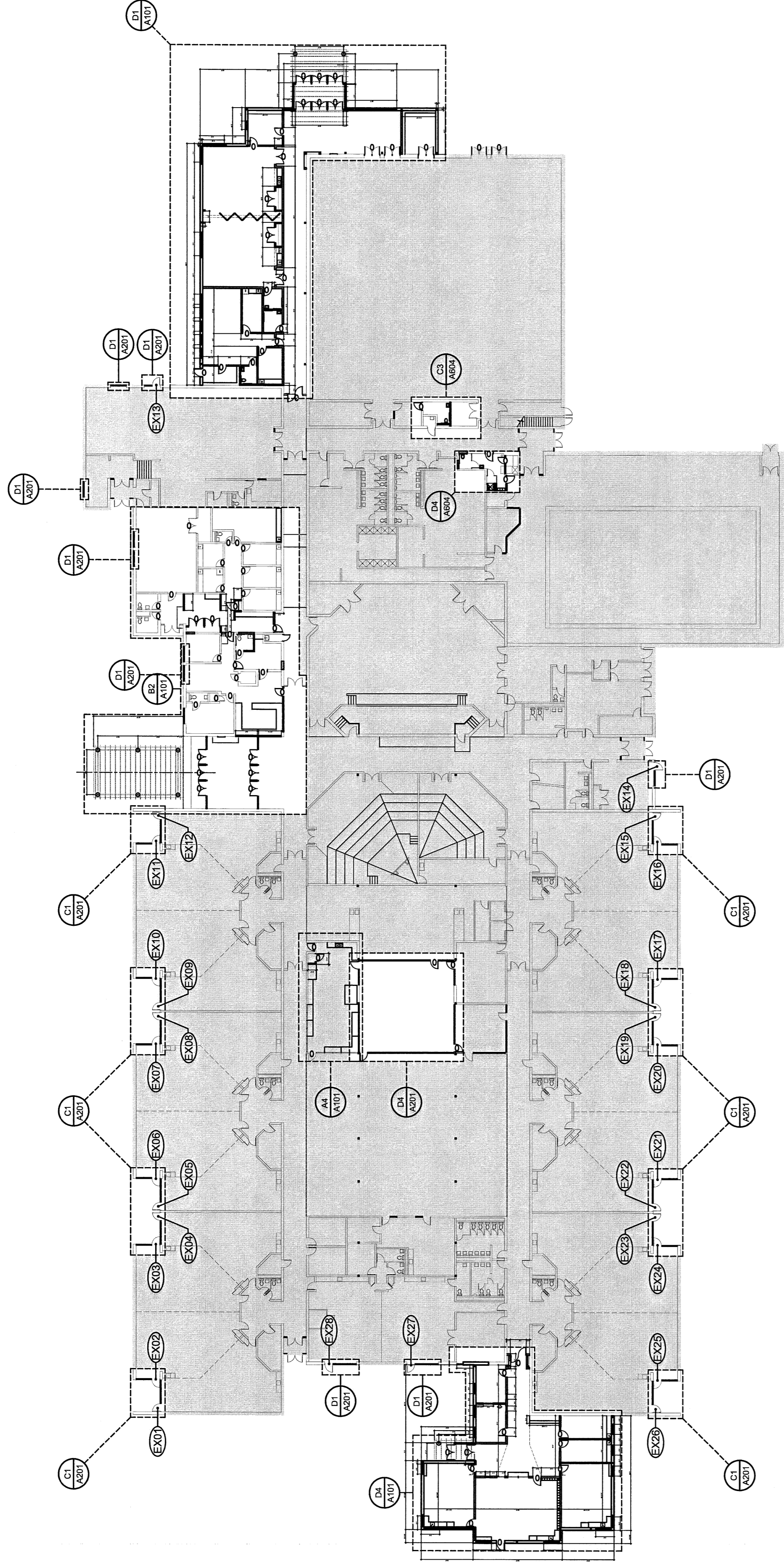
OWNER:

PROJECT:
RIVERTON EXPANSION
AND RENOVATION PROJECT
1600 FOREST AVE.
PORTLAND, ME, 04103

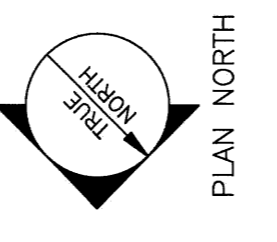
REVISIONS:

DRAWING:
DEMOLITION PLAN AND OVER-ALL FLOOR PLAN
SCALE: AS NOTED
DATE: 05/09/06

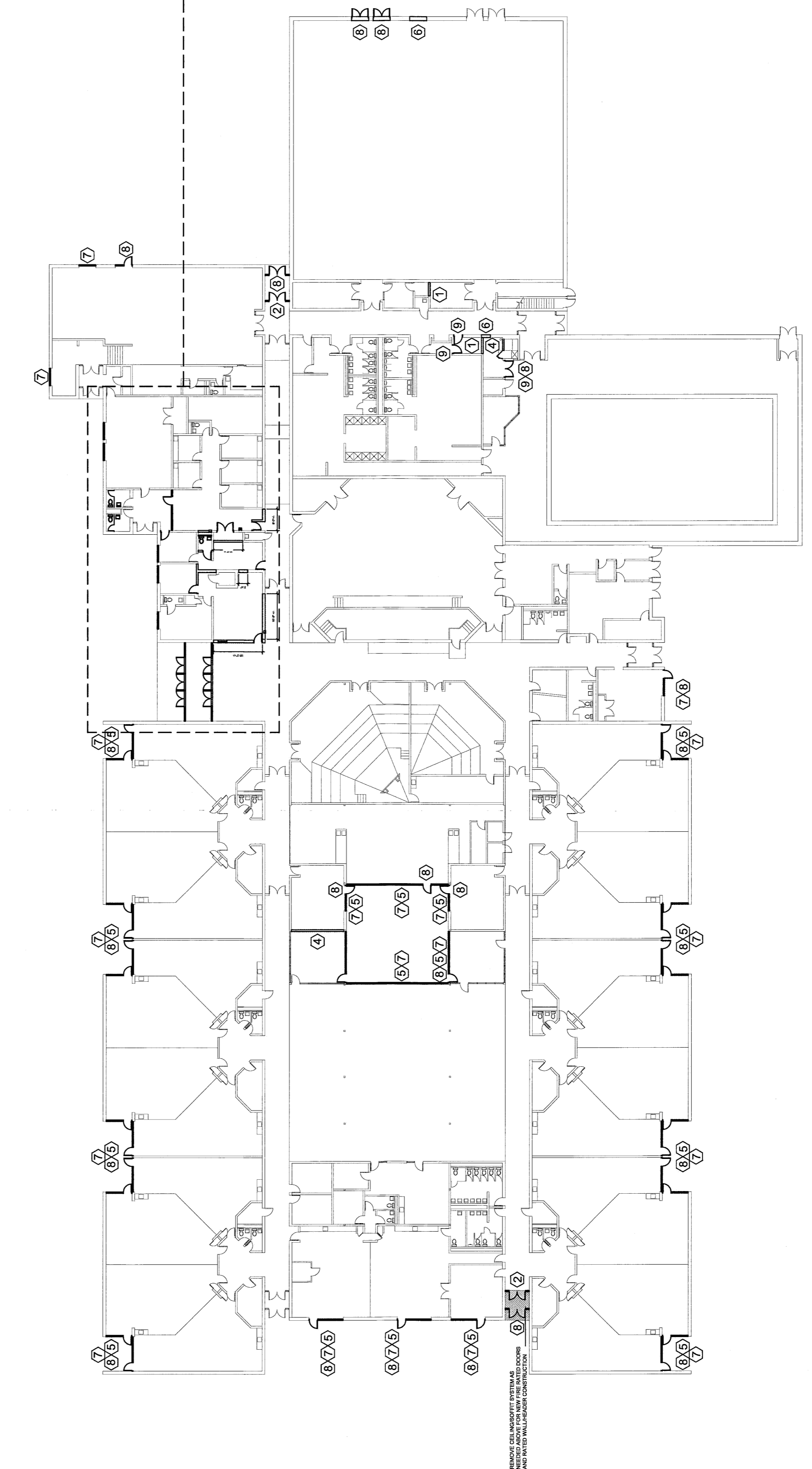
SHEET:
A100



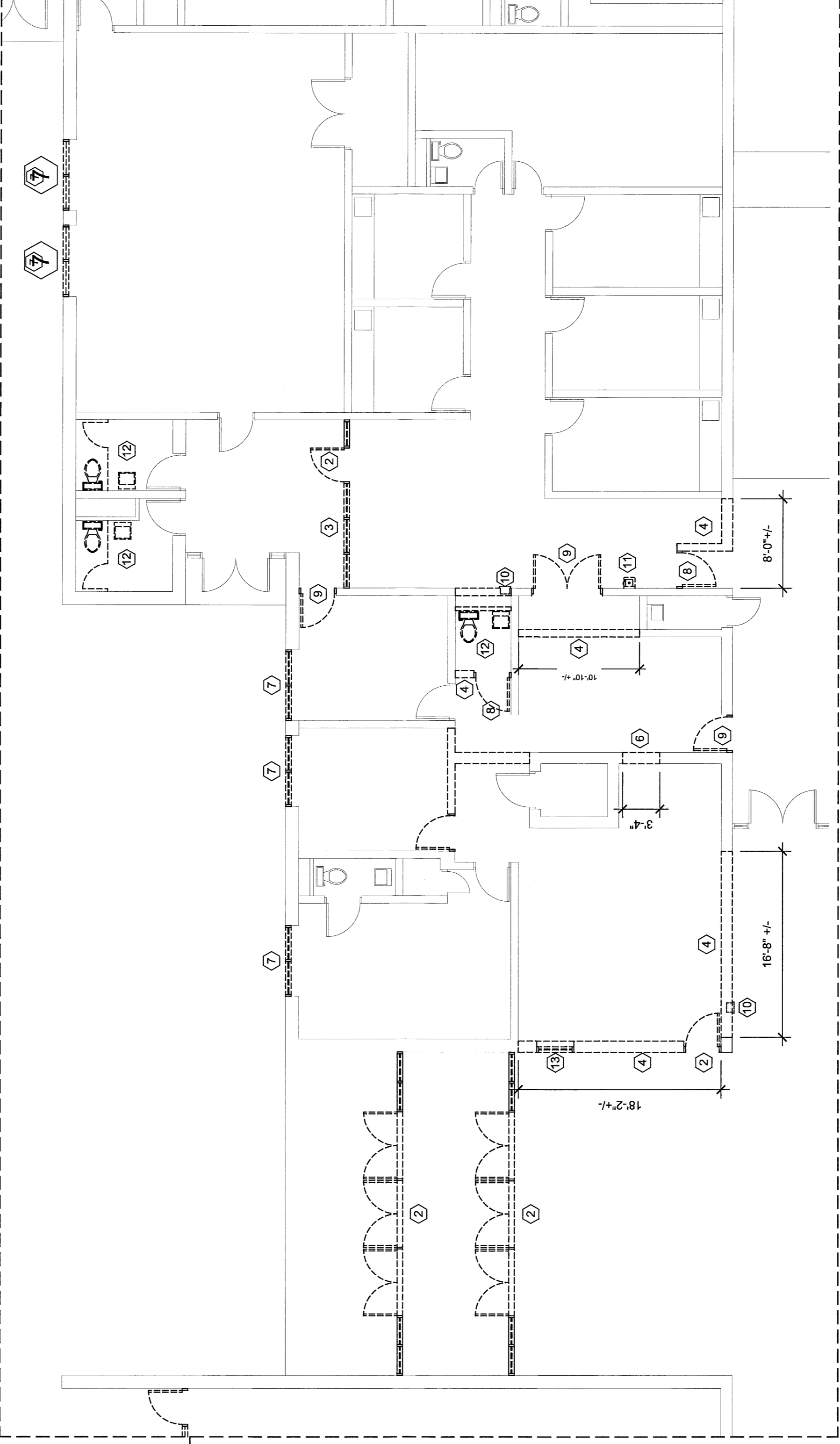
GENERAL NOTES
1. SEE A.2 FOR ENLARGED FLOOR PLANS
OF EXTENT OF WORK



B1 FLOOR PLAN - SCALE=1/32"=1'-0"

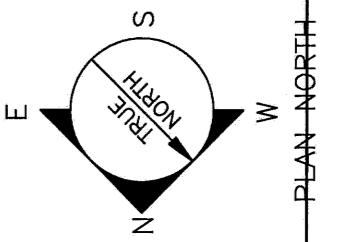


D4 DEMOLITION PLAN - SCALE=1/32"=1'-0"



DEMOLITION NOTES

- 1 REMOVE MASONRY.
- 2 REMOVE DOOR, FRAME AND HARDWARE.
- 3 REMOVE GLAZING, FRAME AND HARDWARE.
- 4 REMOVE ENTIRE INTERIOR WALL FROM FLOOR TO UNDERSIDE OF DECK, U.N.O.
- 5 EXISTING FIN-TUBE TO REMAIN INTACT TO ENABLE RE-ATTACHMENT TO NEW GLAZING SYSTEM OR WALL INFILL.
- 6 REMOVE MASONRY, PREPARE FOR NEW DOOR.
- 7 REMOVE GLAZING, FRAME AND HARDWARE, PREPARE FOR NEW WINDOW.
- 8 REMOVE DOOR, FRAME AND HARDWARE, PREPARE FOR NEW DOOR.
- 9 REMOVE DOOR, FRAME AND HARDWARE, PREPARE FOR INFILL.
- 10 REMOVE STORE & REINSTALL RECESS F.E. CABINET.
- 11 REMOVE DRINKING FOUNTAIN, CAP AT ORIGIN.
- 12 REMOVE RESTROOM FIXTURES & PARTITIONS.
- 13 REMOVE FIRE SHUTTERS AND FRAME.



D1 ENLARGED DEMOLITION PLAN - SCALE=1/8"=1'-0"