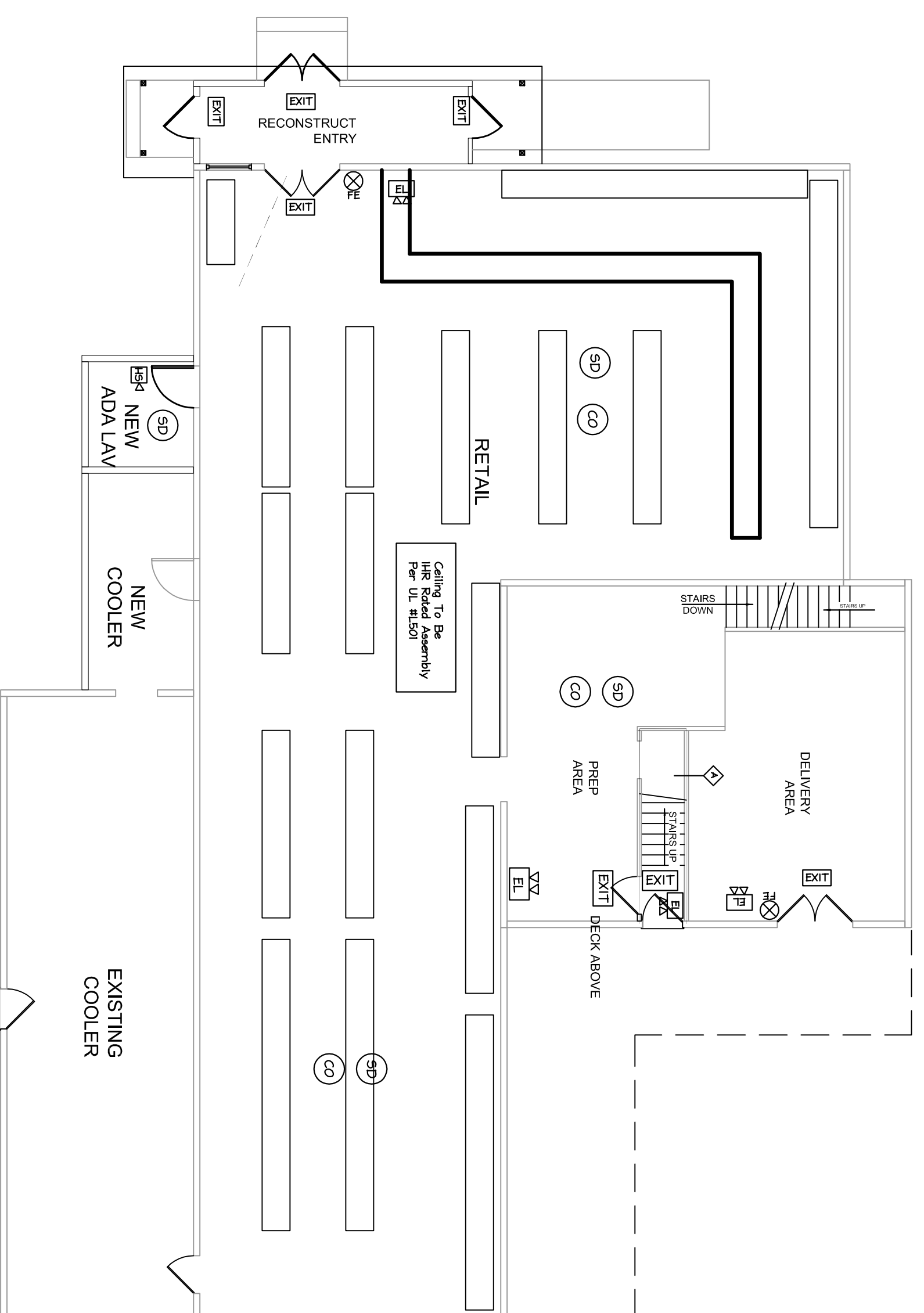
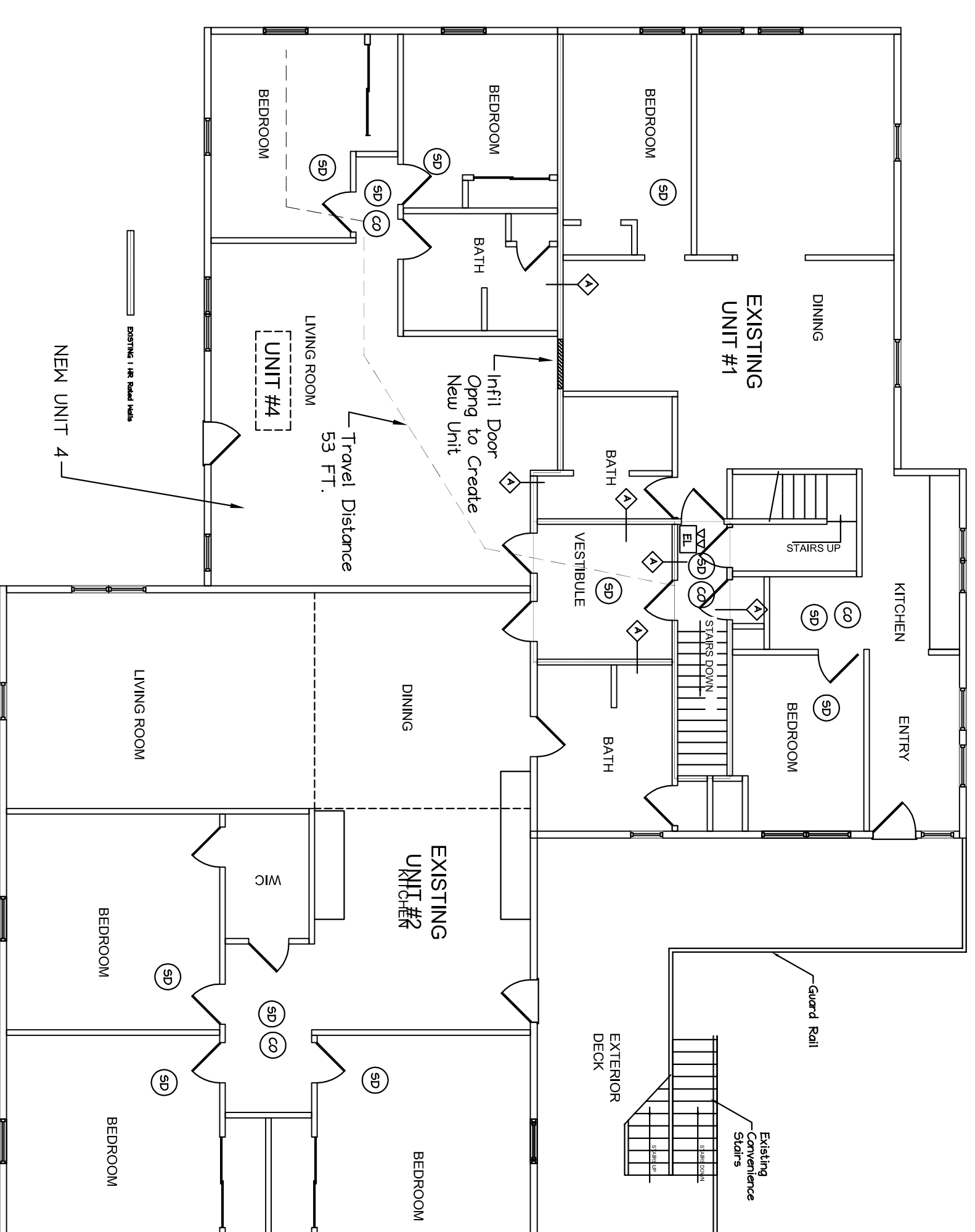


BASEMENT LIFE SAFETY PLAN (EXISTING)
Scale: 1/8" = 1'-0" FOR REFERENCE ONLY

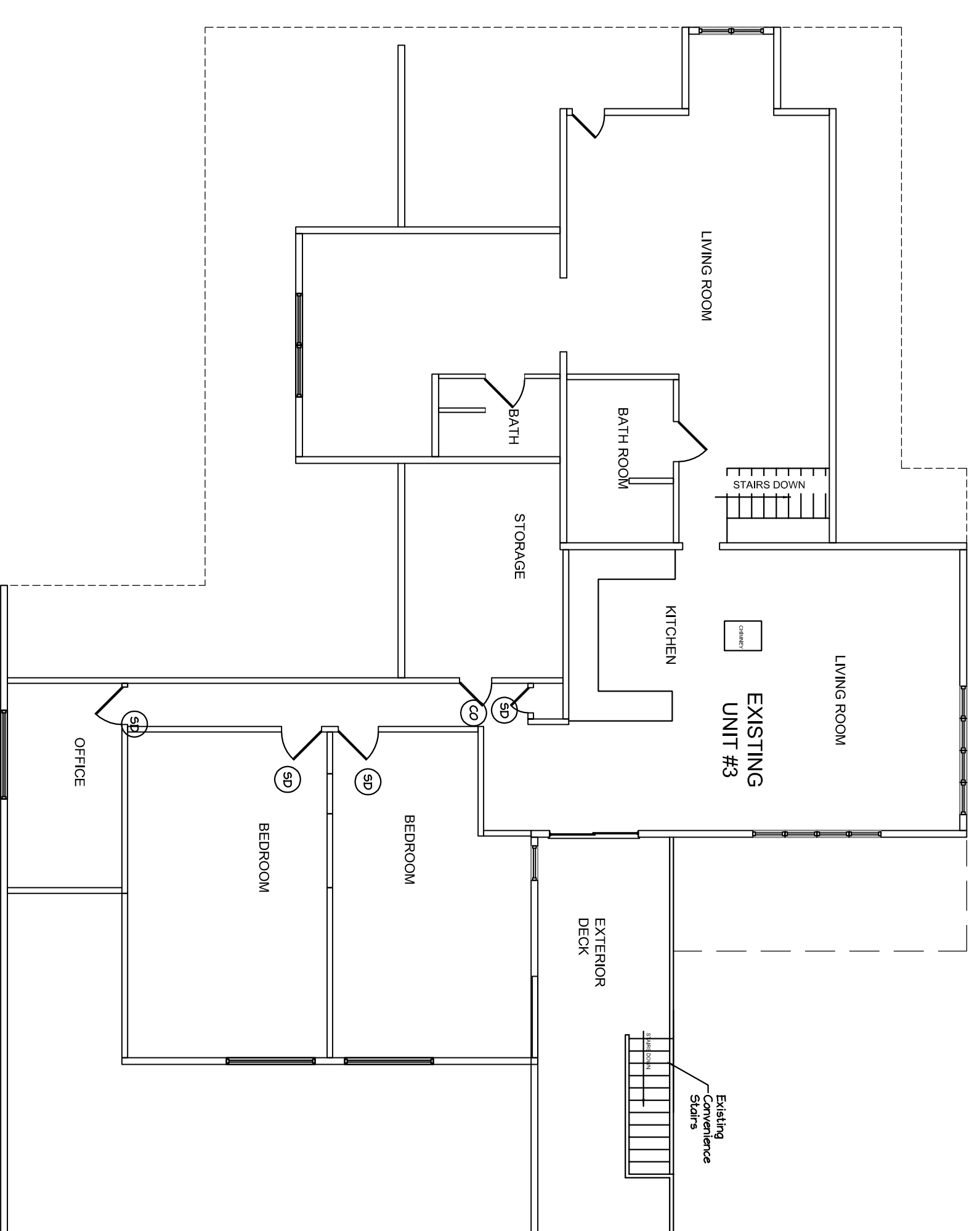
- FIRE SAFETY LEGEND**
- SA SMOKE ALARM
 - CO CO DETECTOR
 - PS PULL STATION
 - HD HEAT DETECTOR
 - FE FIRE EXTINGUISHER
 - EL EMERGENCY LIGHT
 - HSP4 HORN STROBE PACK
 - HP4 HORN PACK
 - FCFP FIRE ALARM CONTROL PANEL
 - EXIT ILLUMINATED EXIT SIGN



FIRST FLOOR LIFE SAFETY PLAN (EXISTING)
Scale: 1/8" = 1'-0" FOR REFERENCE ONLY

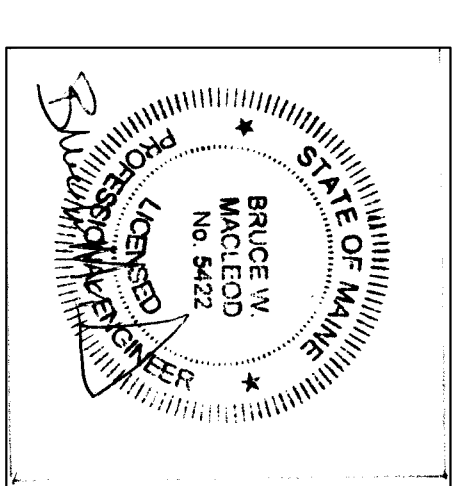


SECOND FLOOR LIFE SAFETY PLAN
Scale: 1/8" = 1'-0"



THIRD FLOOR LIFE SAFETY PLAN (EXISTING)
Scale: 1/8" = 1'-0" FOR REFERENCE ONLY

ISSUED 5/10/17



Macleod Structural Engineers, Inc. 404 Main Street, Gorham, Maine 04038 207.239.0980 Morgan's Market Add'l Apartment 1576 Forest Ave. Portland, Maine		
DATE: 5/10/17	DRAWN BY: BHW	DRAWING NUMBER: LS-1.0
TITLE: Life Safety Plans		
SCALE: as noted		