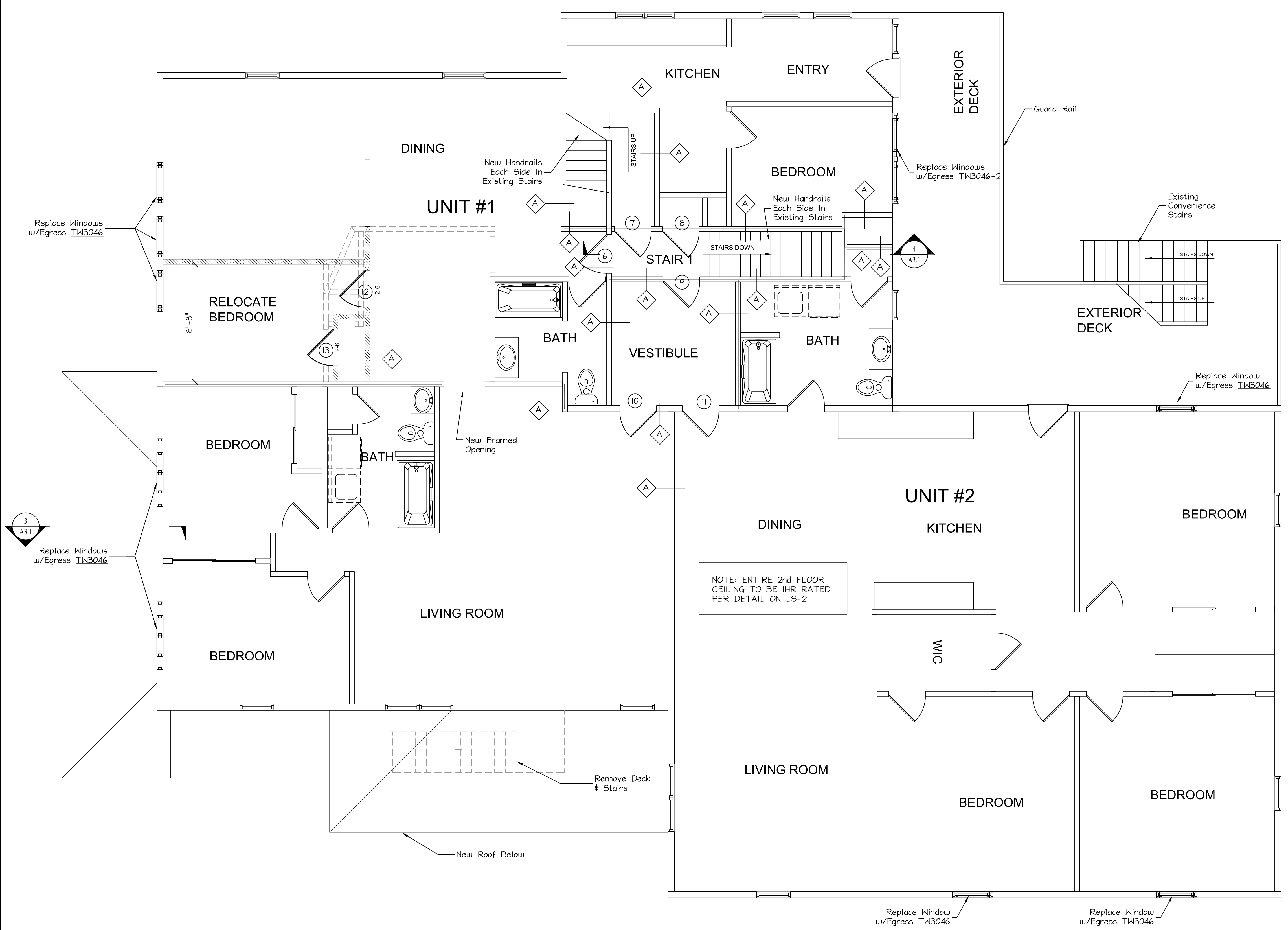


DOOR SCHEDULE

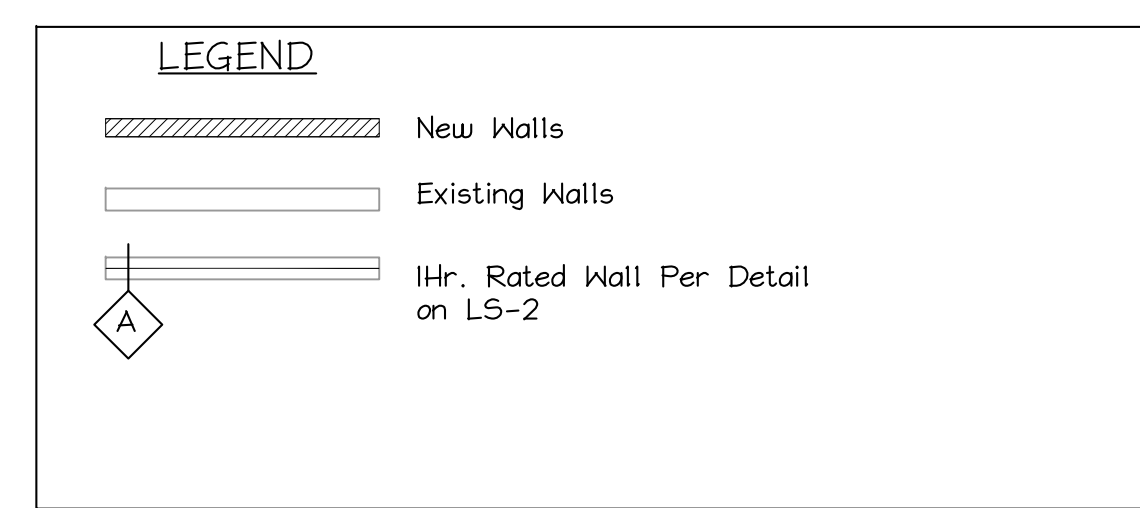
DOOR #	SIZE	LABEL	DOOR		FRAME		TYPE	REMARKS
			MTR'L	ELEV	MTR'L	ELEV		
1	6070	---		G2	---		FULL GLASS ENTRY	
2	3070			G1			FULL GLASS ENTRY	
3	3070			G1			FULL GLASS ENTRY	
4	3070		WOOD	P			HOLLOW CORE INTERIOR	
5	TO FIT EXIST. OPG.	1 HR.	WOOD	P			SOLID CORE INTERIOR	W/SELF CLOSERS
6	TO FIT EXIST. OPG.	1 HR.	WOOD	P			SOLID CORE INTERIOR	W/SELF CLOSERS
7	TO FIT EXIST. OPG.	1 HR.	WOOD	P			SOLID CORE INTERIOR	W/SELF CLOSERS
8	TO FIT EXIST. OPG.	1 HR.	WOOD	P			SOLID CORE INTERIOR	W/SELF CLOSERS
9	TO FIT EXIST. OPG.	1 HR.	WOOD	P			SOLID CORE INTERIOR	W/SELF CLOSERS
10	TO FIT EXIST. OPG.	1 HR.	WOOD	P			SOLID CORE INTERIOR	W/SELF CLOSERS
11	TO FIT EXIST. OPG.	1 HR.	WOOD	P			SOLID CORE INTERIOR	W/SELF CLOSERS
12	2668		WOOD	P			HOLLOW CORE INTERIOR	
13	2668		WOOD	P			HOLLOW CORE INTERIOR	
14	2668		WOOD	P			HOLLOW CORE INTERIOR	

NOTE: See Accessibility Notes on A0.1 For Hardware and Dimensional Requirements
 NOTE: Doors Not Labeled Are Existing to Remain, or Replace With Like Kind



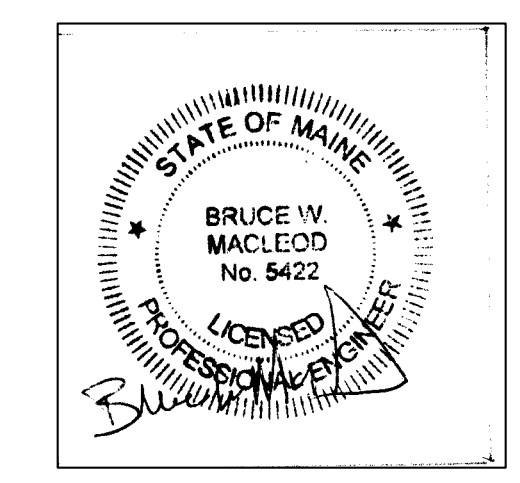
NOTE: ENTIRE 2nd FLOOR CEILING TO BE 1HR RATED PER DETAIL ON LS-2

Note:
 Window Labels Shown Are From Andersen Series 400 Collection For Size Reference.



SECOND FLOOR PLAN
 Scale: 1/4" = 1'-0"

ISSUED 2/3/17



MacLeod
 Structural Engineers, PA
 404 Main Street, Gorham, Maine 04038 207.839.0980

Moran's Market Renovation
 1576 Forest Ave.
 Portland, Maine

TITLE: 2nd Floor Plan

DATE: 10/25/16 DRAWN BY: BIM DRAWING NUMBER: A-1.1
 SCALE: as noted PROJ NO: 2016-070