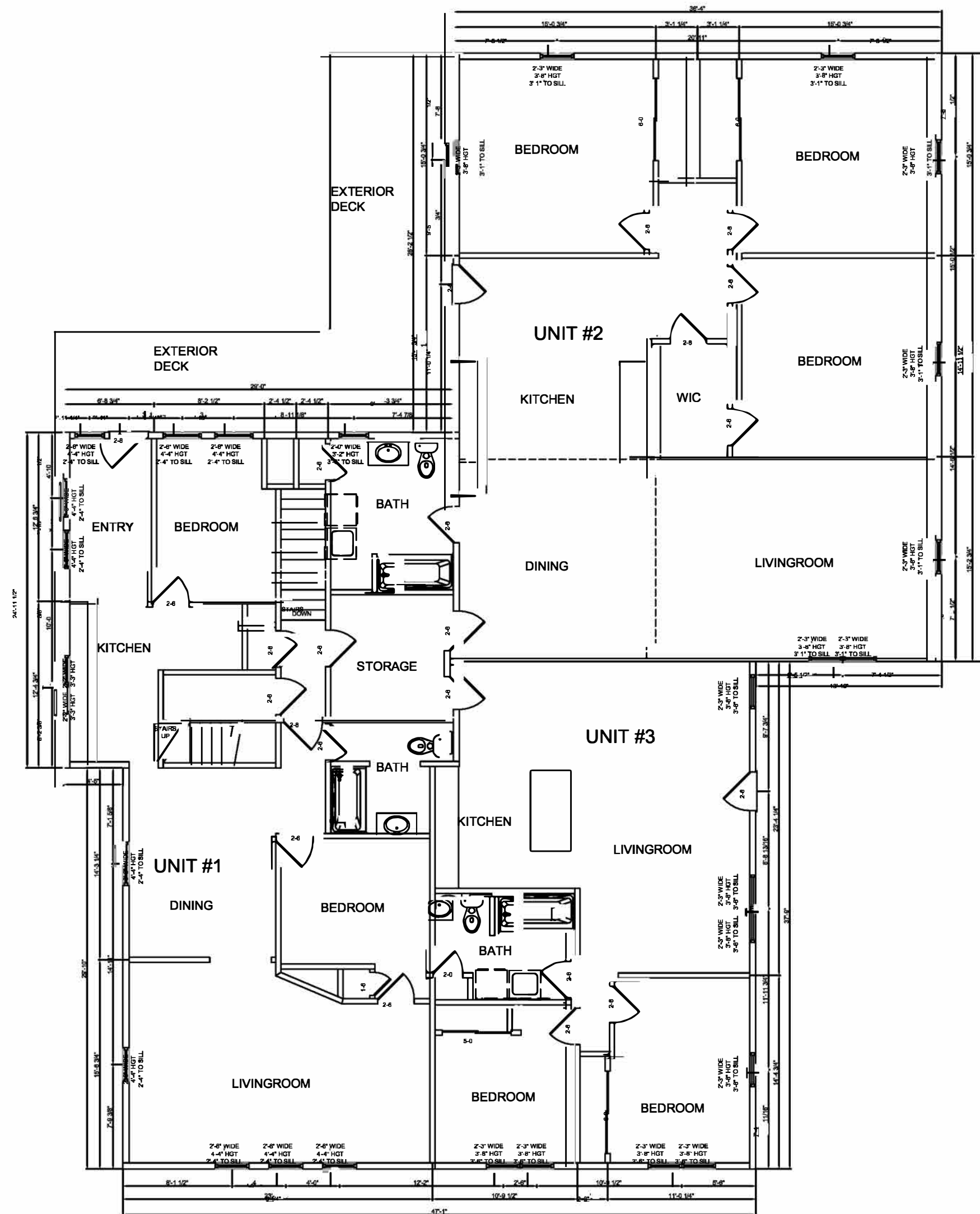
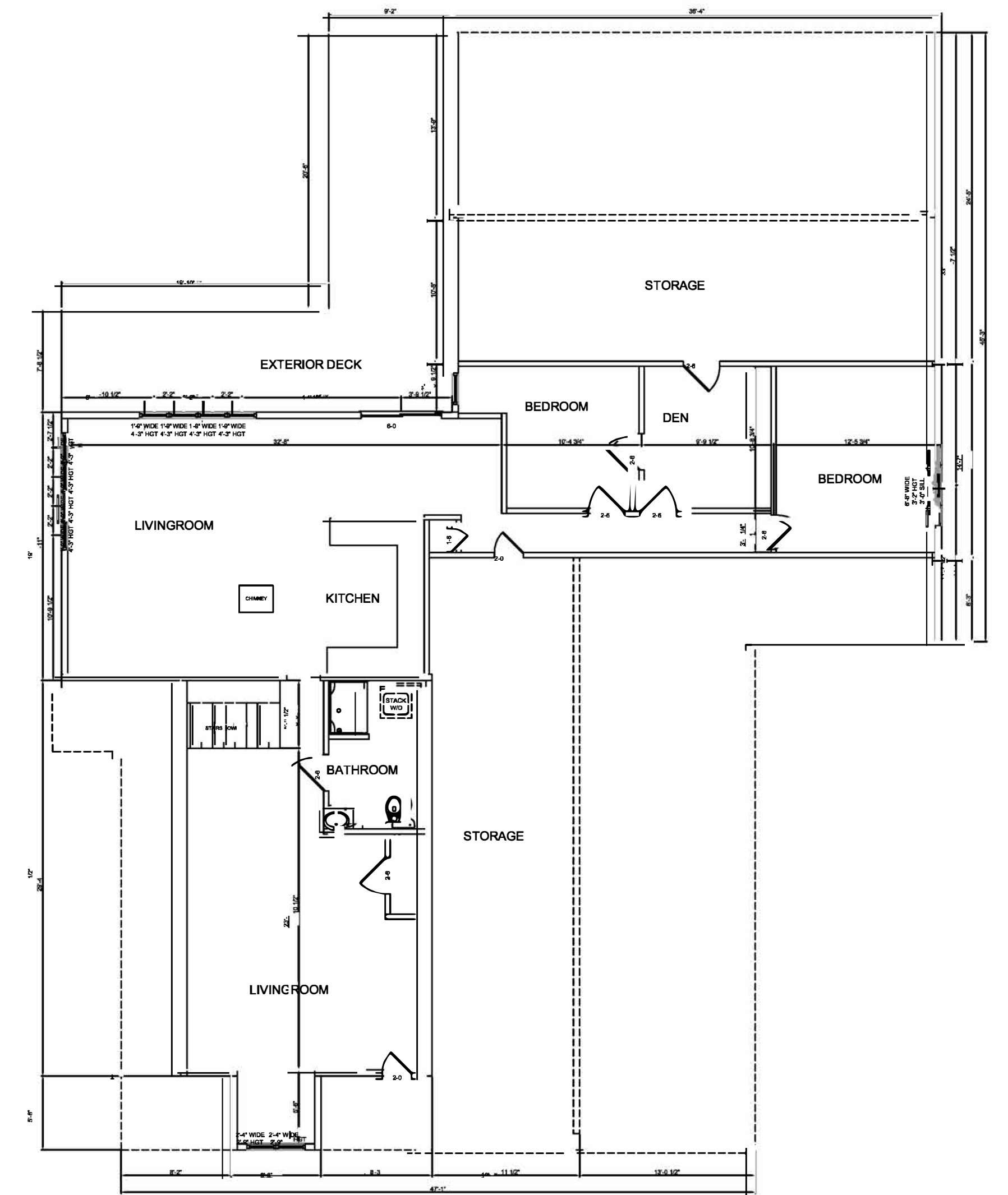


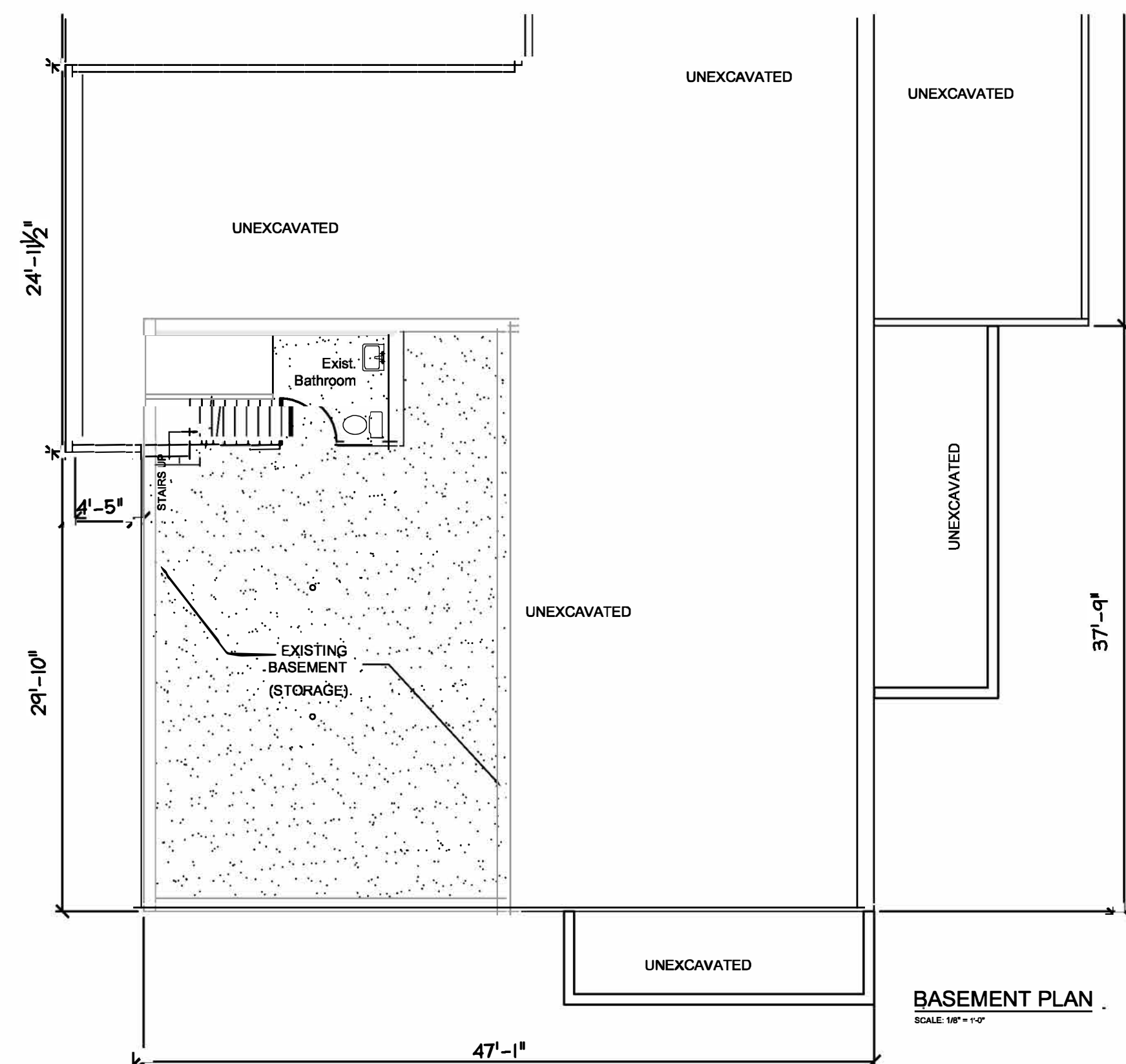
FIRST FLOOR PLAN
SCALE: 1/8" = 1'-0"



SECOND FLOOR PLAN
SCALE: 1/8" = 1'-0"

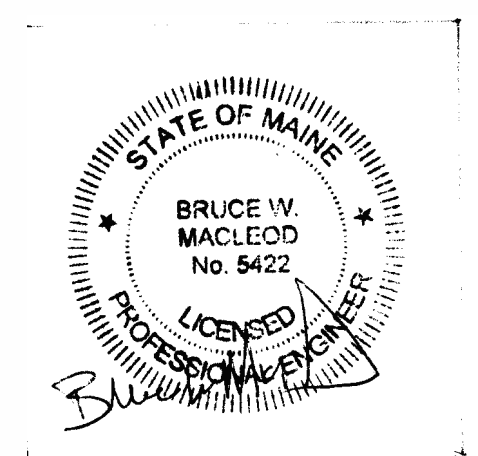


THIRD FLOOR PLAN
SCALE: 1/8" = 1'-0"



BASEMENT PLAN
SCALE: 1/8" = 1'-0"

ISSUED 2/2/17



MacLeod Structural Engineers, PA 404 Main Street, Gorham, Maine 04038 207.839.0980		
Moran's Market Renovation 1576 Forest Ave. Portland, Maine		
TITLE: Existing Condition Plans		
DATE: 10 25 16	DRAWN BY: BIM	DRAWING NUMBER:
SCALE: as noted	PROJ. NO: 2016-070	A-0.2