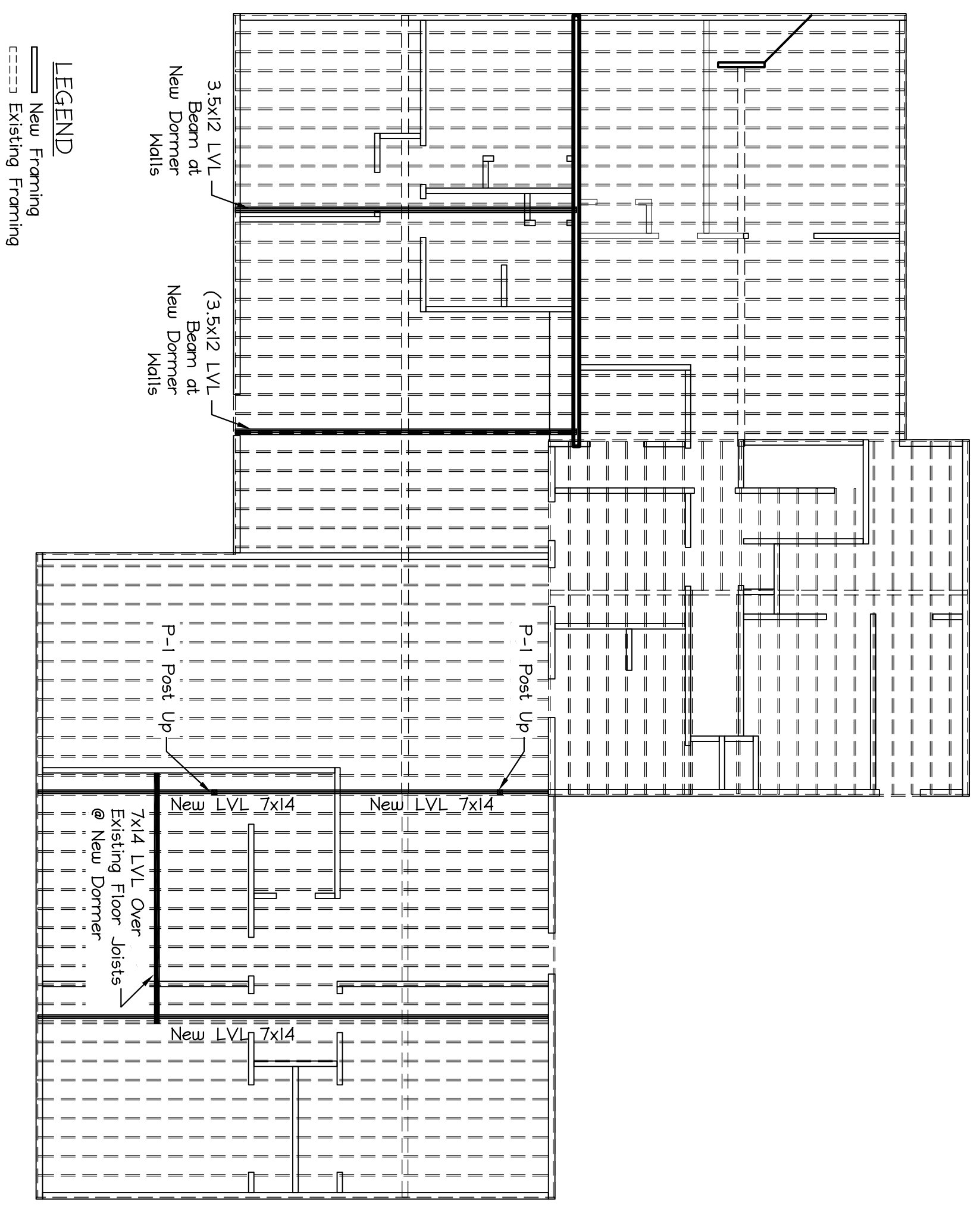
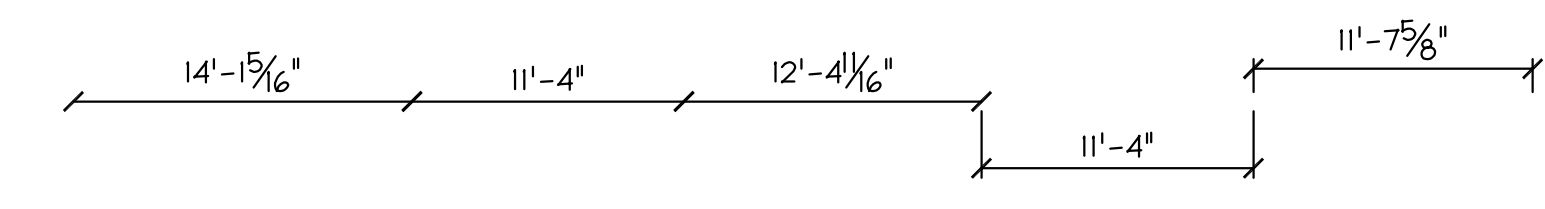
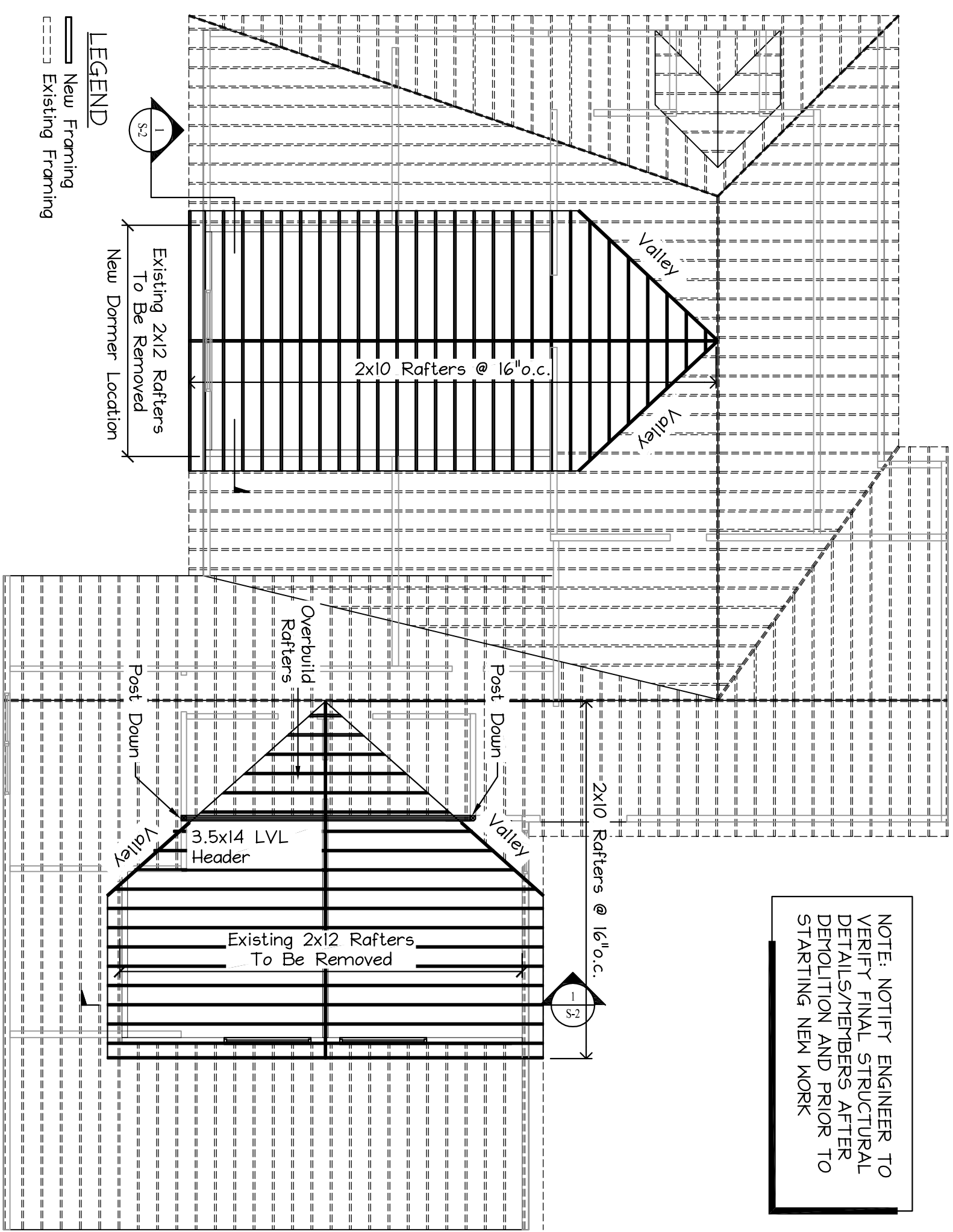


2nd FLOOR FRAMING PLAN
Scale: 1/8" = 1'-0"



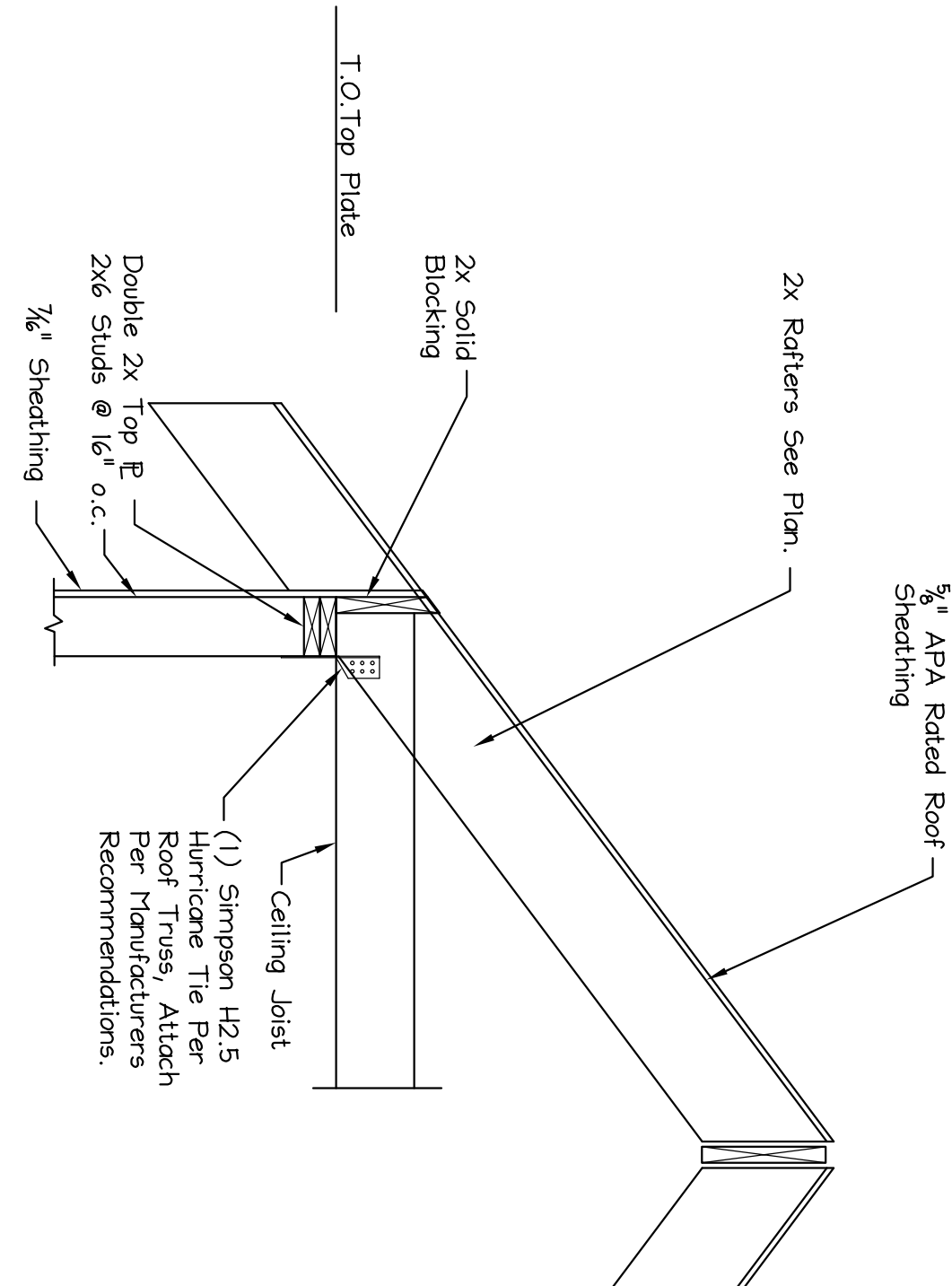
3rd FLOOR FRAMING PLAN
Scale: 1/8" = 1'-0"



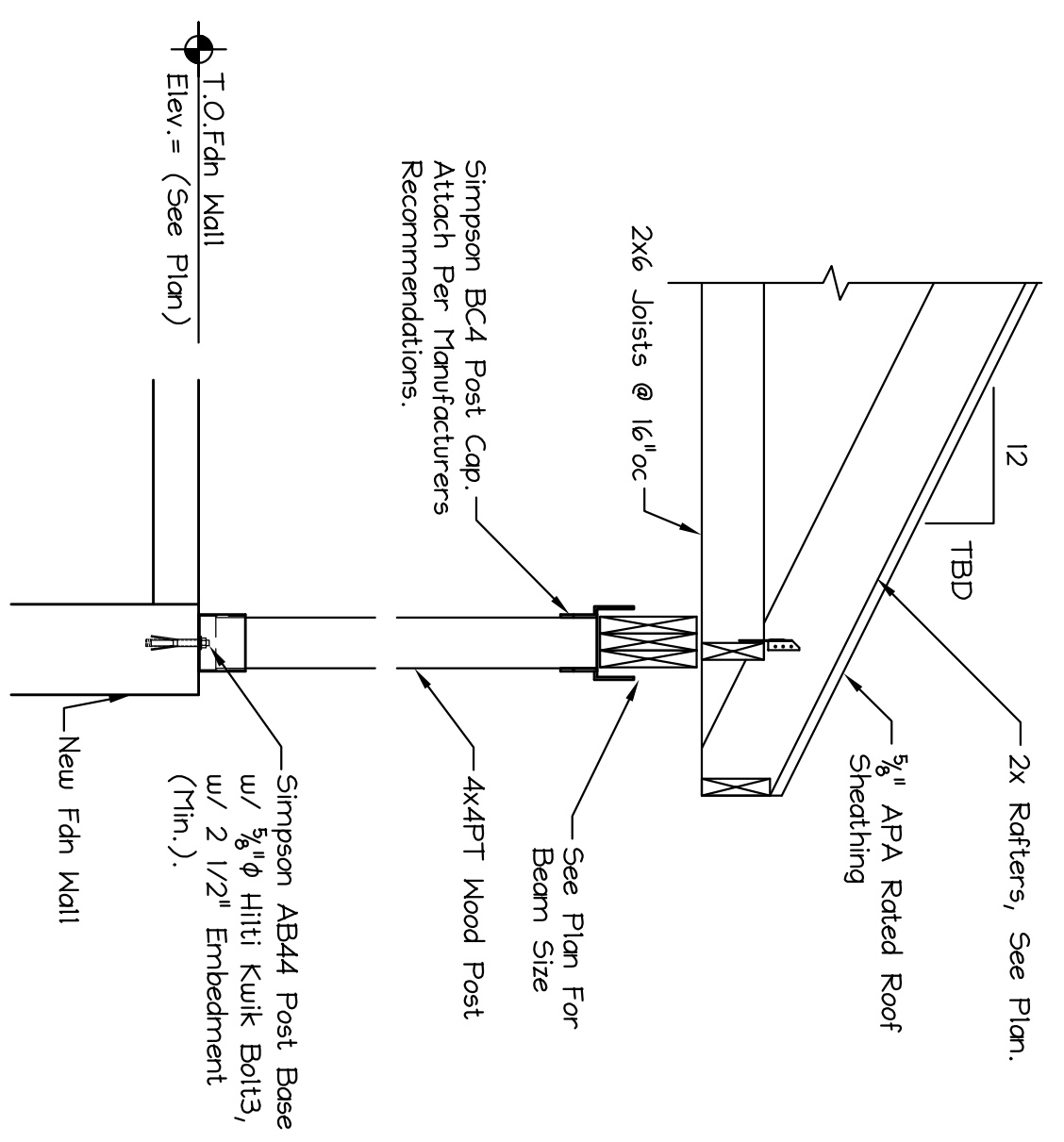
NOTE: NOTIFY ENGINEER TO VERIFY FINAL STRUCTURAL DETAILS/MEMBERS AFTER DEMOLITION AND PRIOR TO STARTING NEW WORK

ROOF FRAMING PLAN
Scale: 1/8" = 1'-0"

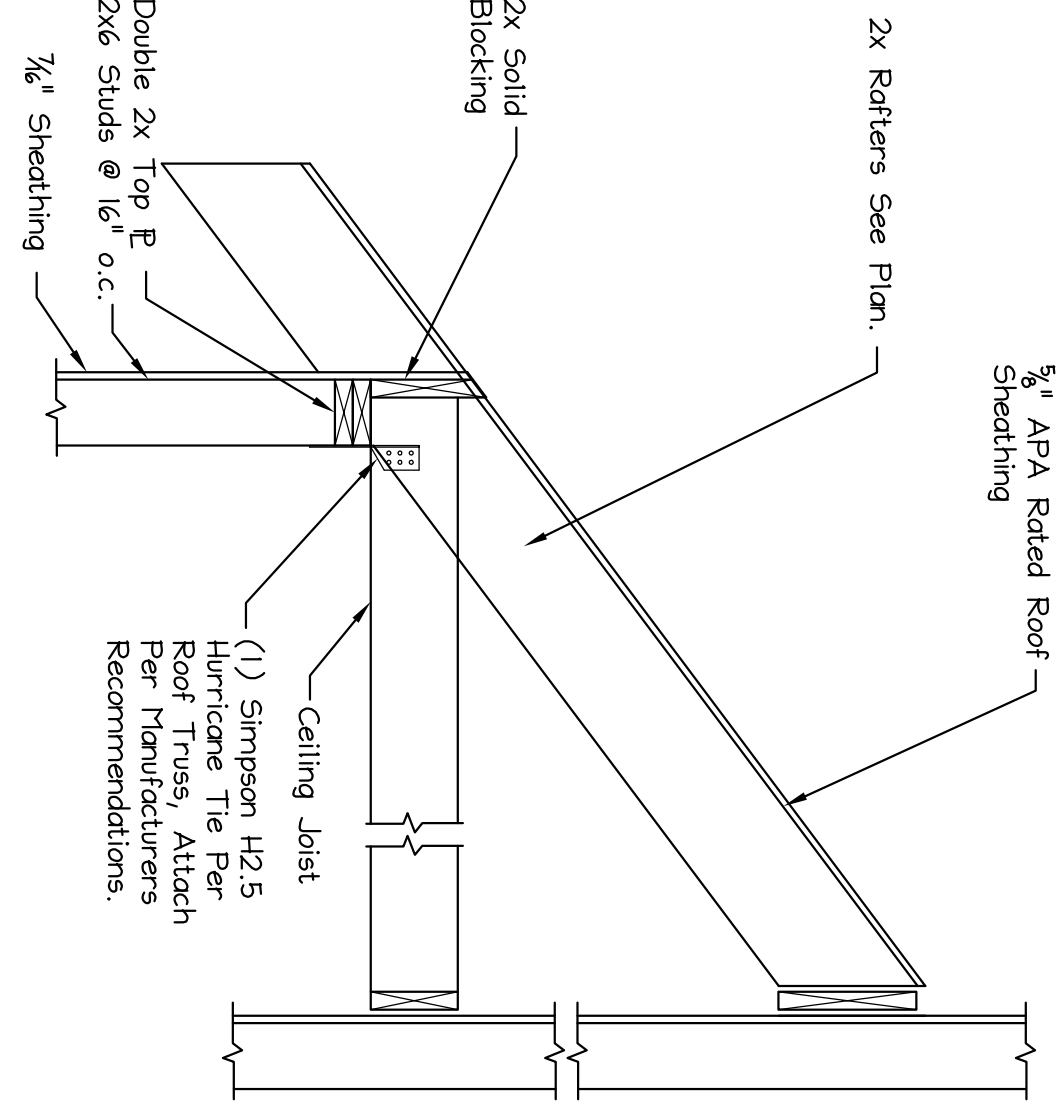
SECTION 1 Typical Rafter to Top Plate Connection
Scale: 3/4" = 1'-0"



SECTION 2
Scale: 3/4" = 1'-0"



SECTION 3 Typical Shed Roof Framing
Scale: 3/4" = 1'-0"



OPENING FRAMING SCHEDULE

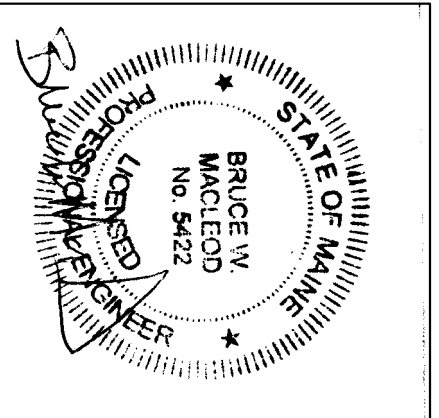
UP TO	DESCRIPTION
4FT	(2) 2x10s SPF or (1) 1.75x9.25 LVL
6FT	(3) 2x10s SPF or (1) 1.75x9.25 LVL or (2) 2x12s SPF
8FT	(3) 2x12s SPF or (2) 1.75x9.25 LVL
10FT	(2) 1.75x9.25 LVL
12FT	(3) 1.75x9.25 LVL
14FT	(2) 1.75x11.875 LVL

NOTE: FOR HEADERS, BEAMS & POSTS NOT SPECIFICALLY NOTED ON PLANS PROVIDE (1) JACK & (1) KING EA. END FOR OPENINGS/BEAMS < 8FT WIDE. TYP. PROVIDE (2) JACK & (1) KING EA. END FOR OPENINGS/BEAMS > 8FT WIDE. TYP. FOLLOW HEADER WIDTHS FOR ALL OPENINGS NOT LABELED ON PLANS

POST SCHEDULE

MARK	DESCRIPTION
P-1	4x6 PSL Post
P-2	H55 4x4x5/16

ISSUED FOR PERMIT 11/10/16



Macleod
Structural Engineers, Inc.
404 Main Street, Gorham, Maine 04038 207.239.0980

Moran's Market Renovation
1576 Forest Ave.
Portland, Maine

DATE: 10/25/16 DRAWN BY: BMM CHECKED BY: BMM
SCALE: as noted PROJ. NO: 2016-070 DRAWING NUMBER: S-2