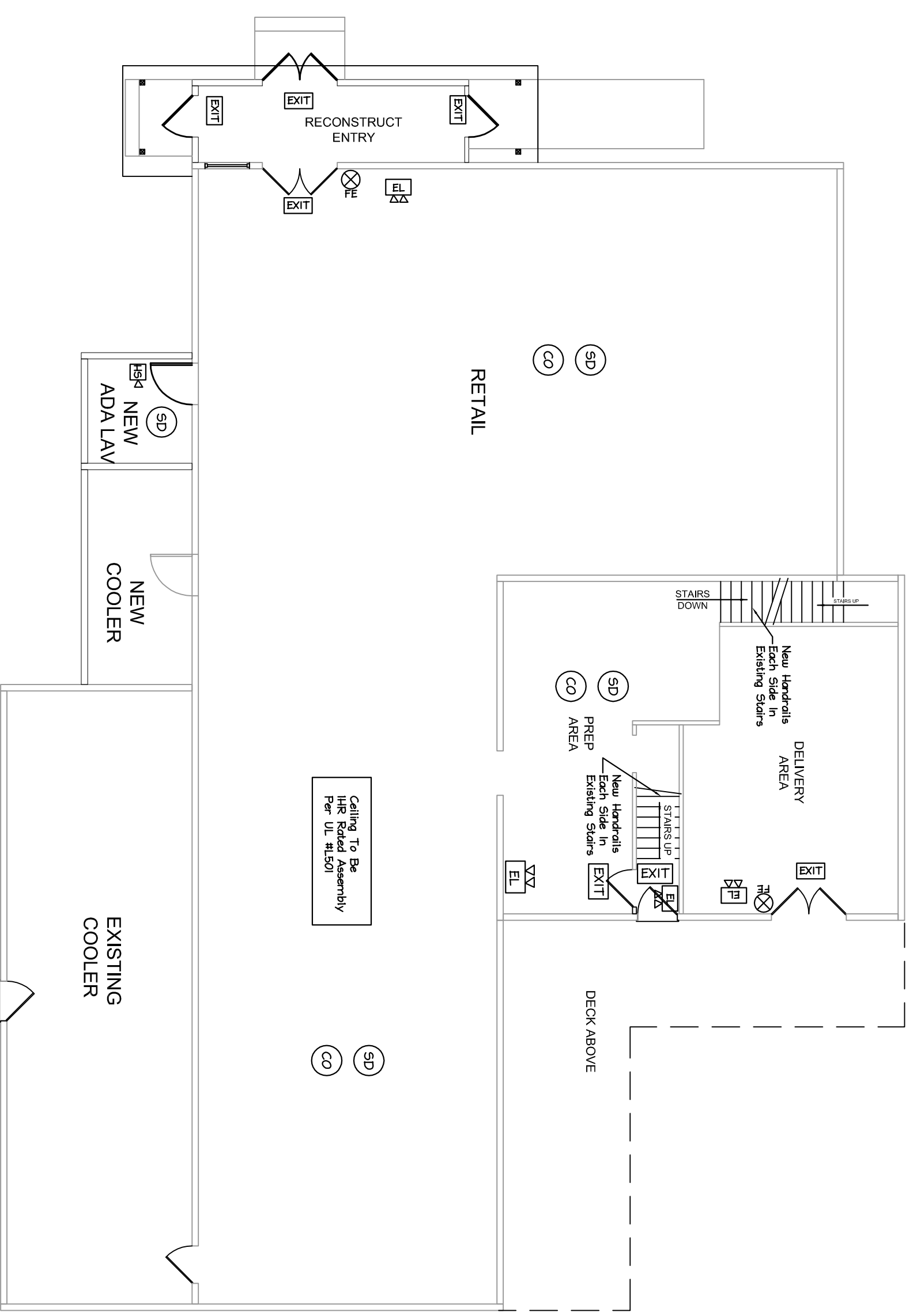
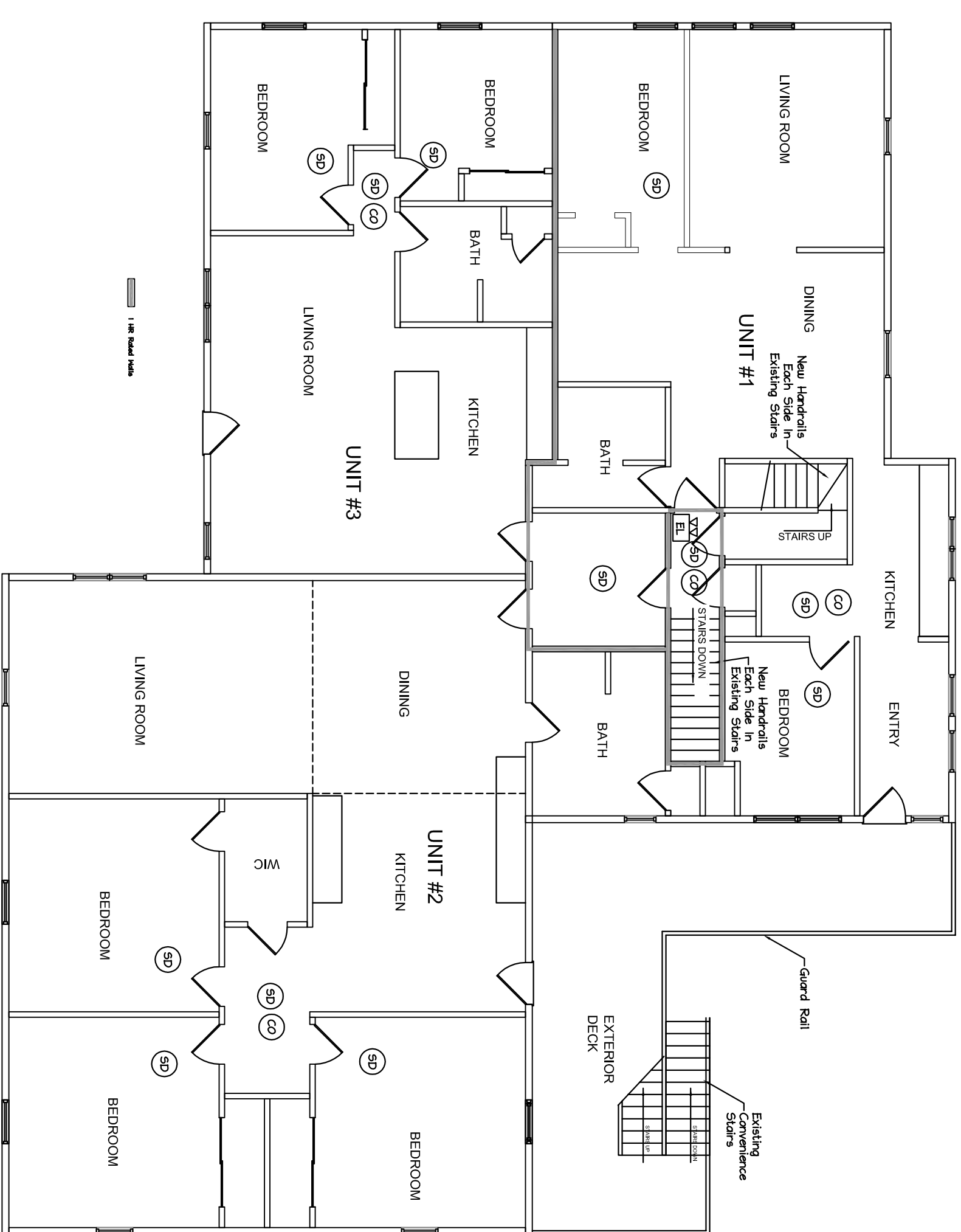


BASEMENT LIFE SAFETY PLAN
Scale: 1/8" = 1'-0"

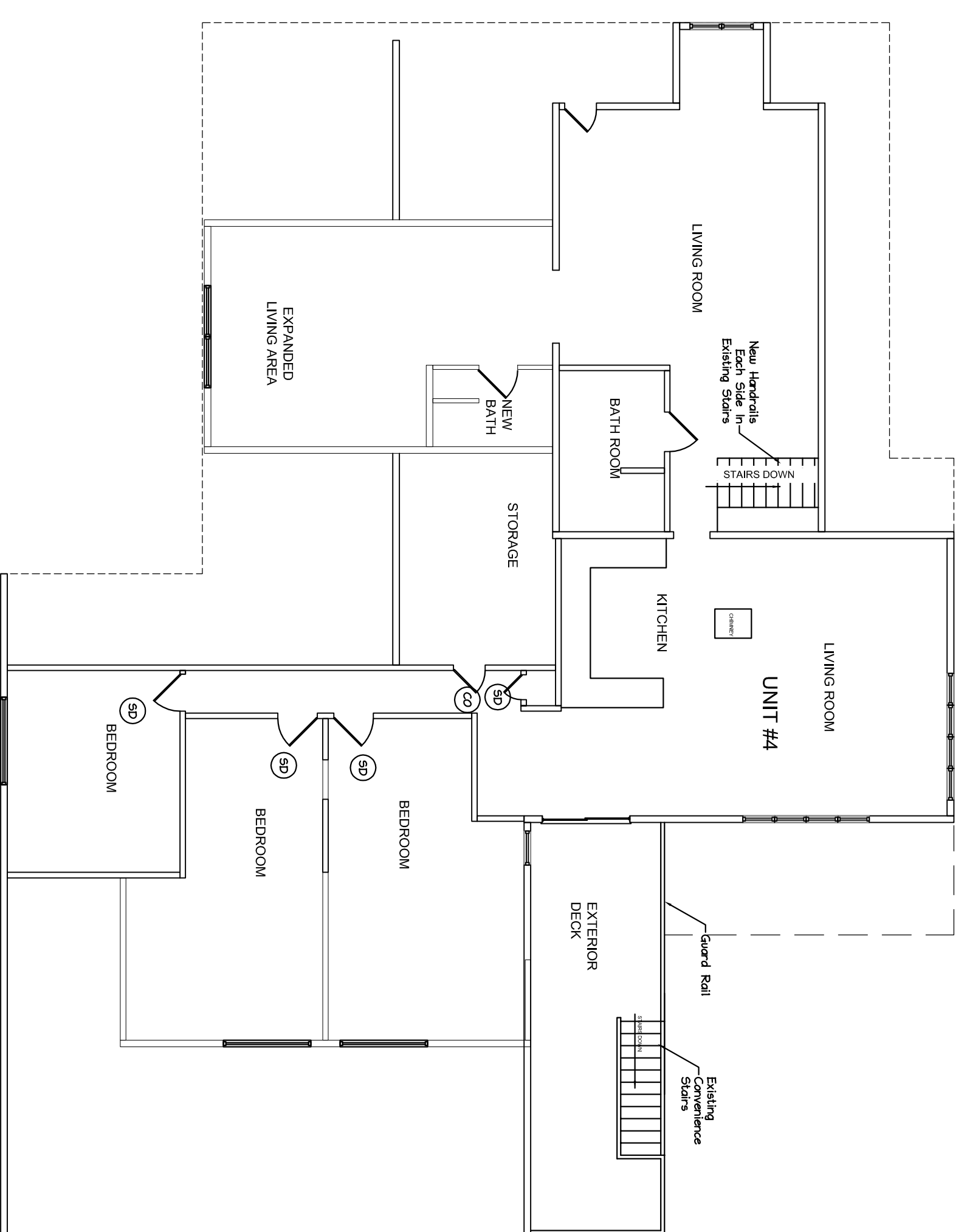
- FIRE SAFETY LEGEND**
- SA SMOKE ALARM
 - CD CO DETECTOR
 - PS PULL STATION
 - HD HEAT DETECTOR
 - FE FIRE EXTINGUISHER
 - EL EMERGENCY LIGHT
 - HS4 HORN STROBE PACK
 - HS4 HORN PACK
 - FCFP FIRE ALARM CONTROL PANEL
 - EXIT ILLUMINATED EXIT SIGN



FIRST FLOOR LIFE SAFETY PLAN
Scale: 1/8" = 1'-0"

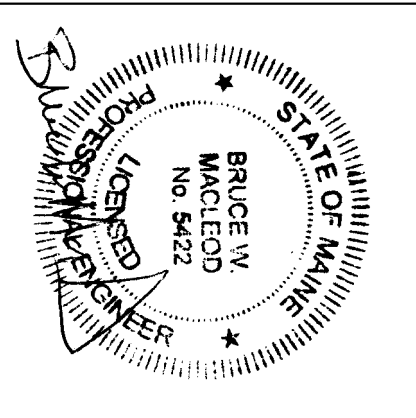


SECOND FLOOR LIFE SAFETY PLAN
Scale: 1/8" = 1'-0"



THIRD FLOOR LIFE SAFETY PLAN
Scale: 1/8" = 1'-0"

ISSUED FOR PERMIT 11/10/16



Macleod
Structural Engineers, Inc.
404 Main Street, Gorham, Maine 04038 207.239.0980

Morton's Market Renovation
1576 Forest Ave.
Portland, Maine

DATE: 10/25/16 DRAWN BY: BVM DRAWING NUMBER: LS-1.0
SCALE: as noted PROJ. NO: 2016-070

TITLE: Life Safety Plans