

**STUDIO A ARCHITECTURE**  
 179 Lisbon Street, Suite 202  
 Lewiston, Maine 04240

REVISION TABLE	NUMBER	DATE	REVISED BY	DESCRIPTION

**PAUL DAVIS SYSTEMS  
 CROTEAU PROJECT**

DRAWINGS PROVIDED BY:

DATE:

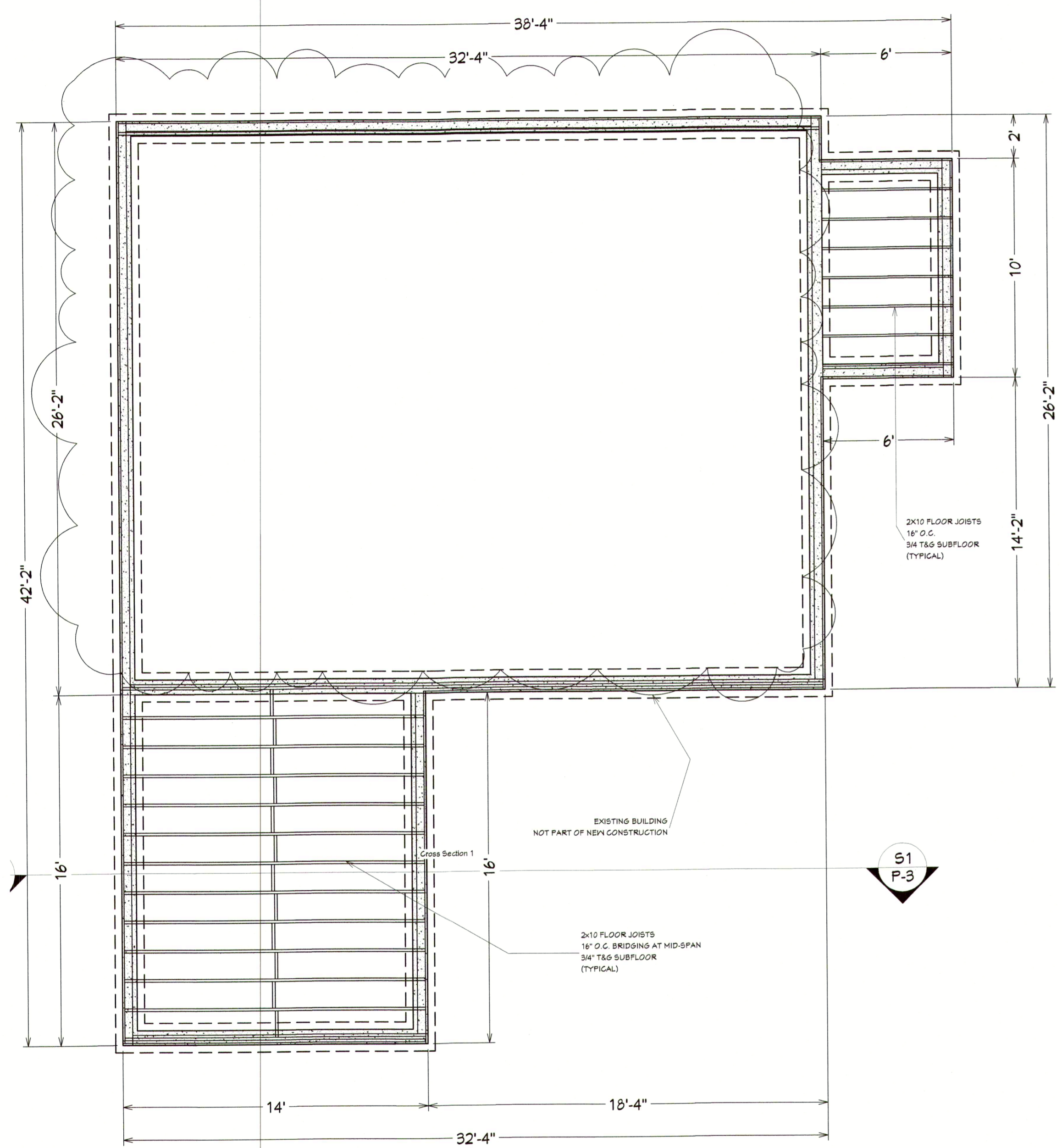
9/8/2017

SCALE:

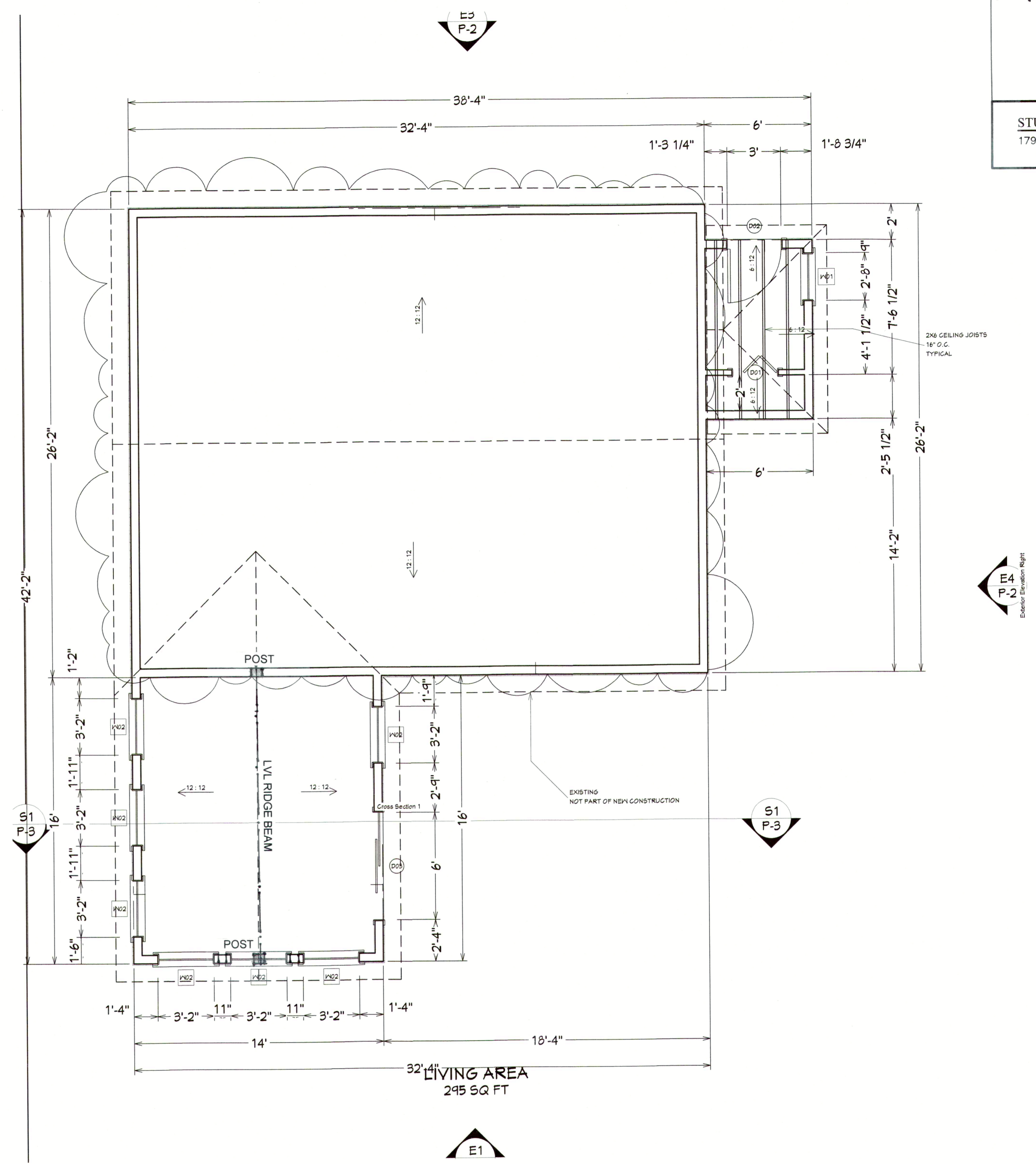
AS NOTED

SHEET:

P-1



Foundation 1/4 in = 1 ft



1st Floor 1/4 in = 1 ft