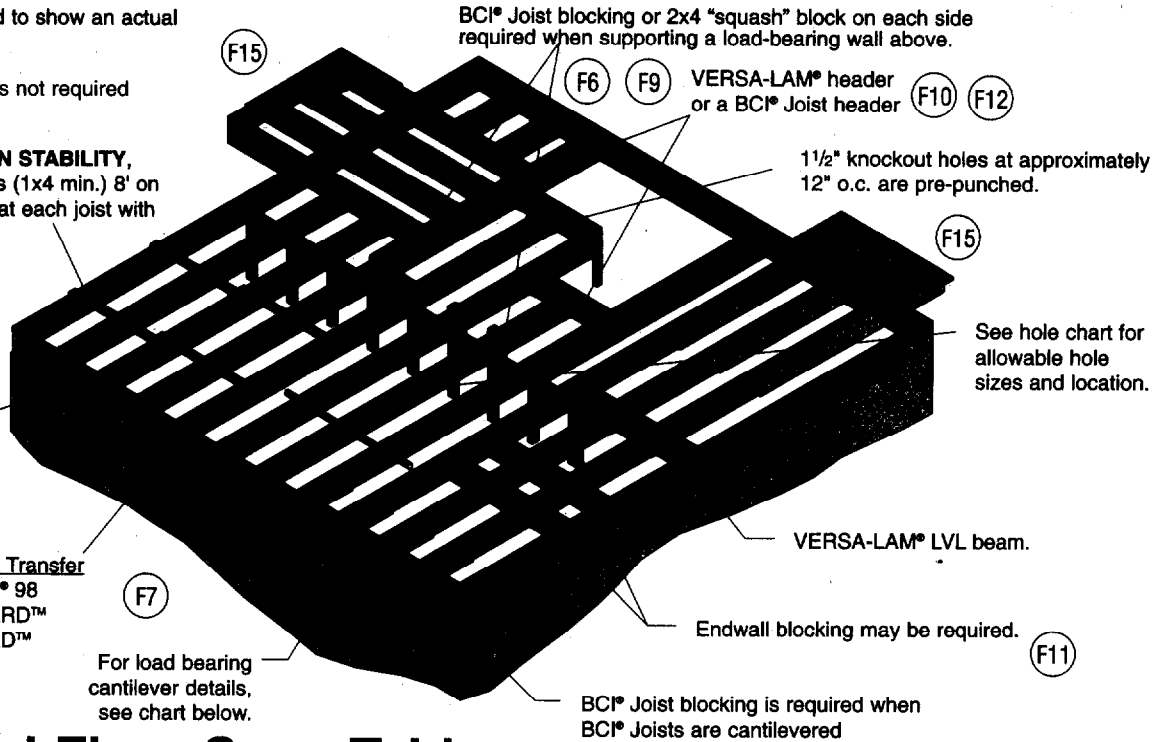


Floor Framing

Note: The illustration below is showing several suggested applications for the Boise EWP products. It is not intended to show an actual house under construction.

Note: Mid-Span bridging is not required



FOR INSTALLATION STABILITY,
Temporary strut lines (1x4 min.) 8' on center max. Fasten at each joist with 2-8d nails min.

Dimension lumber is not suitable for use as a rim board in BCI® floor systems.

BCI® rim joist (where bearing length allows).

VERSALIM™ Vertical Load Transfer
4000 PLF VERSALIM® 98
2750 PLF BC RIM BOARD™
4400 OSB RIM BOARD™

For load bearing cantilever details, see chart below.

BCI® Joist blocking is required when BCI® Joists are cantilevered

Endwall blocking may be required.

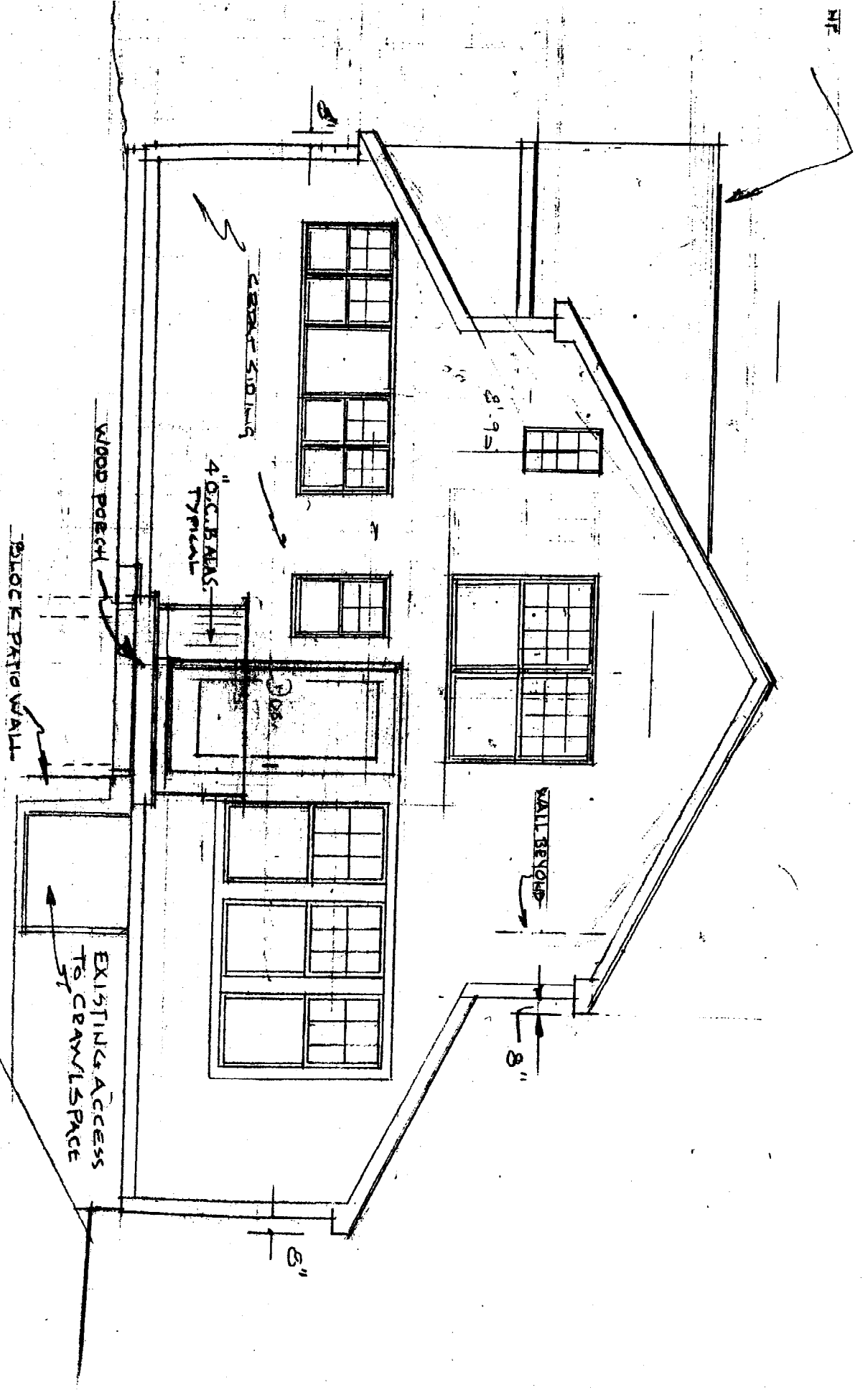
Residential Floor Span Table

| Joist Depth | BCI® Joist Series | ★★★ THREE STAR ★★★ | | | | | ★★★★ FOUR STAR ★★★★★ | | | | | CAUTION ★ MINIMUM STIFFNESS ALLOWED BY CODE ★ CAUTION | | | | |
|-------------|-------------------|--------------------|----------|------------|----------|----------|----------------------|----------|------------|----------|----------|---|----------|------------|----------|----------|
| | | 12" o.c. | 16" o.c. | 19.2" o.c. | 24" o.c. | 32" o.c. | 12" o.c. | 16" o.c. | 19.2" o.c. | 24" o.c. | 32" o.c. | 12" o.c. | 16" o.c. | 19.2" o.c. | 24" o.c. | 32" o.c. |
| 9 1/2" | 400s | 16'-11" | 15'-5" | 14'-7" | 13'-7" | 12'-3" | 13'-2" | 12'-0" | 11'-4" | 10'-6" | 9'-6" | 18'-8" | 17'-1" | 16'-2" | 14'-5" | 12'-3" |
| | 450s | 17'-8" | 16'-1" | 15'-2" | 14'-2" | 12'-11" | 13'-0" | 12'-4" | 11'-10" | 10'-11" | 9'-11" | 19'-6" | 17'-10" | 16'-10" | 15'-8" | 13'-4" |
| | 500s | 18'-4" | 16'-8" | 15'-9" | 14'-8" | 13'-4" | 14'-2" | 13'-0" | 12'-3" | 11'-4" | 10'-9" | 20'-3" | 18'-6" | 17'-5" | 16'-3" | 14'-3" |
| 11 7/8" | 400s | 20'-1" | 18'-4" | 17'-4" | 16'-2" | 14'-1" | 15'-8" | 14'-4" | 13'-6" | 12'-6" | 11'-4" | 22'-3" | 20'-4" | 18'-8" | 16'-8" | 14'-1" |
| | 450s | 21'-0" | 19'-2" | 18'-1" | 16'-10" | 15'-0" | 16'-5" | 14'-11" | 14'-1" | 13'-0" | 11'-10" | 23'-3" | 21'-2" | 20'-0" | 18'-1" | 15'-0" |
| | 500s | 21'-10" | 19'-10" | 18'-9" | 17'-5" | 15'-0" | 17'-0" | 15'-6" | 14'-7" | 13'-6" | 12'-3" | 24'-1" | 22'-0" | 20'-9" | 19'-4" | 15'-0" |
| | 600s | 22'-8" | 20'-8" | 19'-5" | 18'-1" | 16'-5" | 17'-9" | 16'-11" | 15'-1" | 14'-0" | 12'-8" | 25'-1" | 22'-10" | 21'-7" | 20'-1" | 17'-3" |
| | 900s | 25'-8" | 23'-4" | 22'-0" | 20'-5" | 18'-6" | 20'-0" | 18'-2" | 17'-0" | 15'-9" | 14'-2" | 28'-5" | 25'-10" | 24'-4" | 22'-7" | 19'-4" |
| 14" | 400s | 22'-10" | 20'-10" | 19'-8" | 18'-4" | 14'-3" | 17'-10" | 16'-3" | 15'-4" | 14'-3" | 12'-11" | 25'-3" | 22'-7" | 20'-7" | 18'-5" | 14'-3" |
| | 450s | 23'-10" | 21'-9" | 20'-6" | 19'-1" | 15'-2" | 18'-8" | 16'-11" | 15'-11" | 14'-10" | 13'-8" | 26'-4" | 24'-1" | 22'-5" | 20'-0" | 15'-2" |
| | 500s | 24'-9" | 22'-6" | 21'-3" | 19'-9" | 15'-2" | 18'-4" | 17'-7" | 16'-0" | 15'-4" | 13'-11" | 27'-4" | 24'-11" | 23'-6" | 20'-3" | 15'-2" |
| | 600s | 25'-9" | 23'-5" | 22'-1" | 20'-6" | 17'-5" | 20'-1" | 18'-3" | 17'-2" | 15'-11" | 14'-5" | 28'-5" | 25'-11" | 24'-5" | 22'-9" | 17'-5" |
| | 900s | 29'-1" | 26'-5" | 24'-11" | 23'-1" | 19'-6" | 22'-9" | 20'-7" | 19'-2" | 17'-10" | 16'-1" | 32'-2" | 29'-3" | 27'-7" | 25'-7" | 19'-6" |
| 16" | 450s | 26'-5" | 24'-1" | 22'-9" | 20'-5" | 15'-4" | 20'-8" | 18'-10" | 17'-8" | 16'-5" | 14'-11" | 29'-2" | 26'-7" | 24'-3" | 20'-5" | 15'-4" |
| | 500s | 27'-5" | 25'-0" | 23'-6" | 20'-5" | 15'-4" | 21'-5" | 19'-8" | 18'-4" | 17'-0" | 15'-4" | 30'-3" | 27'-7" | 25'-7" | 20'-5" | 15'-4" |
| | 600s | 28'-6" | 25'-11" | 24'-5" | 22'-9" | 17'-7" | 22'-3" | 20'-3" | 19'-0" | 17'-7" | 15'-11" | 31'-6" | 28'-8" | 27'-1" | 23'-5" | 17'-7" |
| | 900s | 32'-2" | 29'-3" | 27'-6" | 25'-7" | 19'-7" | 25'-2" | 22'-9" | 21'-5" | 19'-9" | 17'-10" | 35'-7" | 32'-5" | 30'-6" | 26'-2" | 19'-7" |

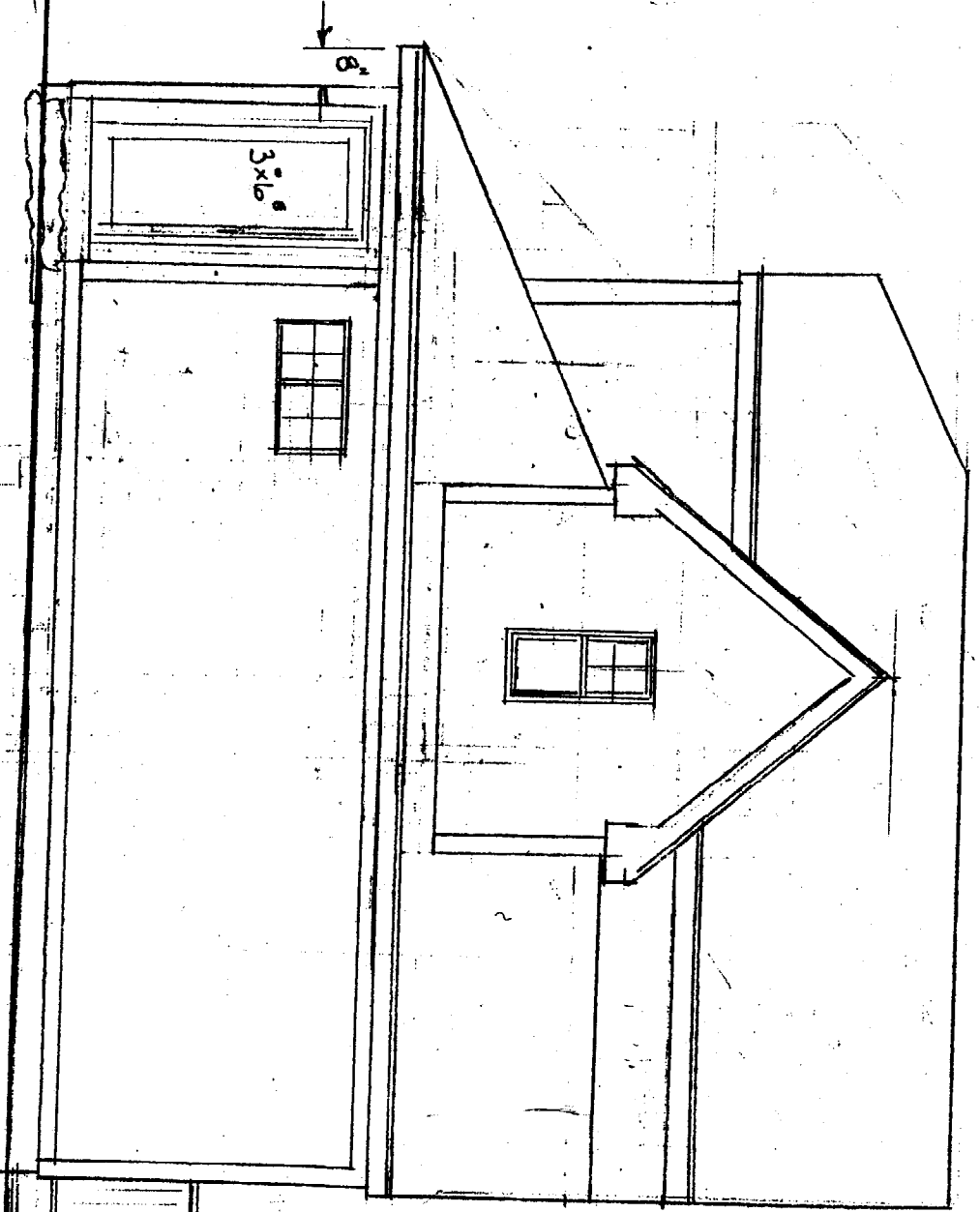
- Table values assume that sheathing is glued and nailed to the joists.
- Table values represent the most restrictive of simple or multiple span applications.
- Table values are based on residential floor loads of **40 PSF live load and 10 PSF dead load.**
- Table values are the maximum allowable clear distance between supports.

- Table values assume minimum bearing lengths without web stiffeners for joist depths of 16 inches and less.
- This table was designed to apply a broad range of applications. It may be possible to exceed the limitations of this table by analyzing a specific application with the BC CALC® software.

- ★★★ Live Load deflection limited to L/480.
- ★★★★ Live Load deflection limited to L/960 to provide a floor that is much stiffer for the more discriminating purchaser.
- ★ Live Load deflection limited to L/360 as allowed by the building code. (Shaded values do not satisfy the requirements of the North Carolina State Building Code. Refer to the THREE STAR table when spans exceed 20 feet.)



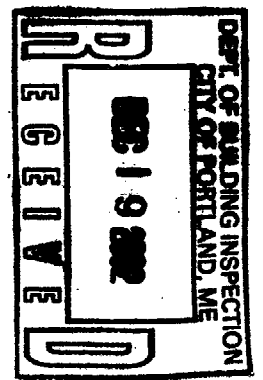
— REAR ELEVATION —
1/4" = 1'-0"



- NOTES:**
 CEDAR SIDING 4" to 5" BR?
 EXT. DOORS 3" x 6"
 23.5" ROOF SHINGLES
- FOUNDATION IS EXISTING
 FIRST FLOOR WALLS & FLOOR ARE EXISTING
 CRAWLSPACE EXISTS

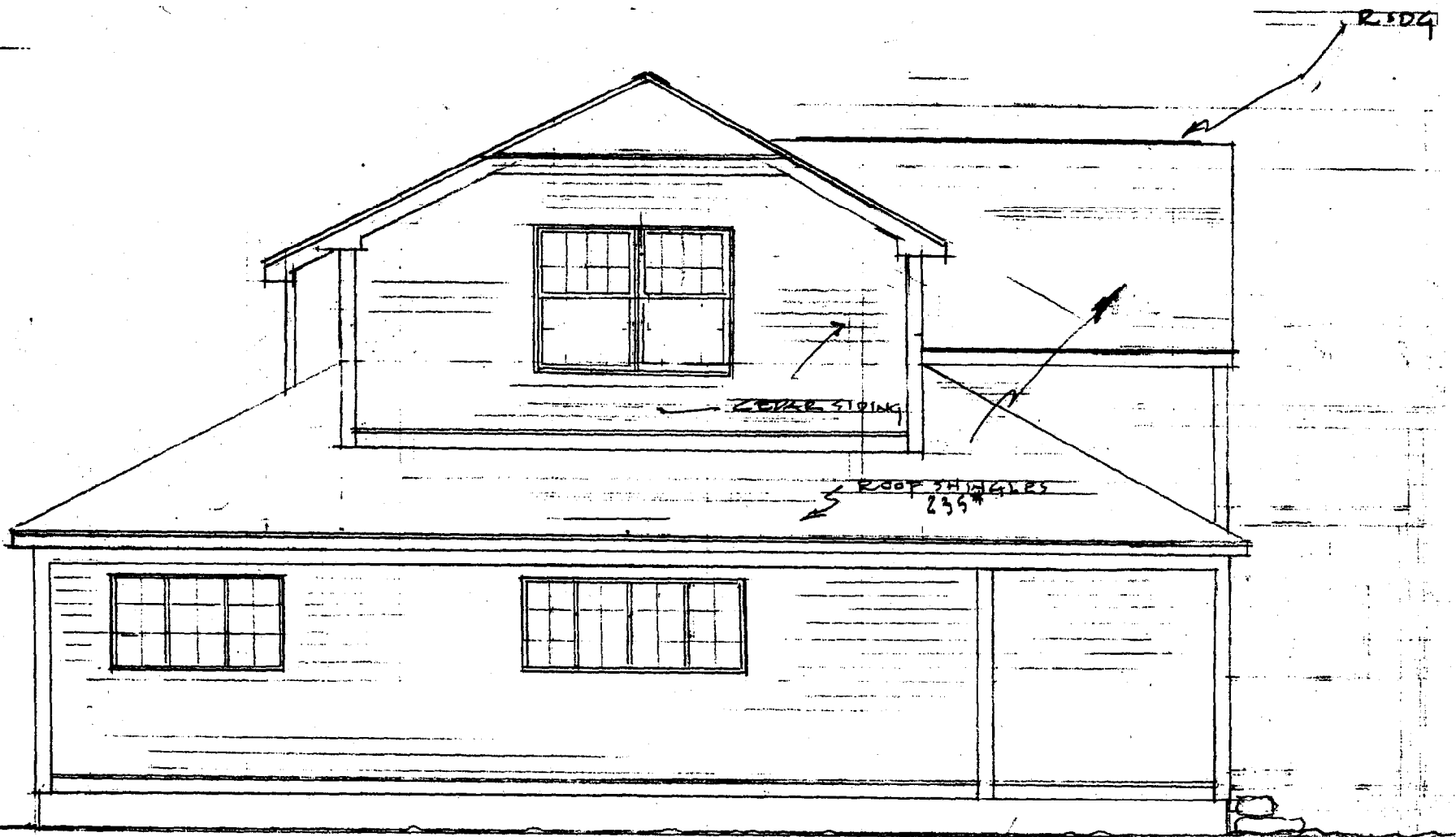
→ Porch H

ING STREET

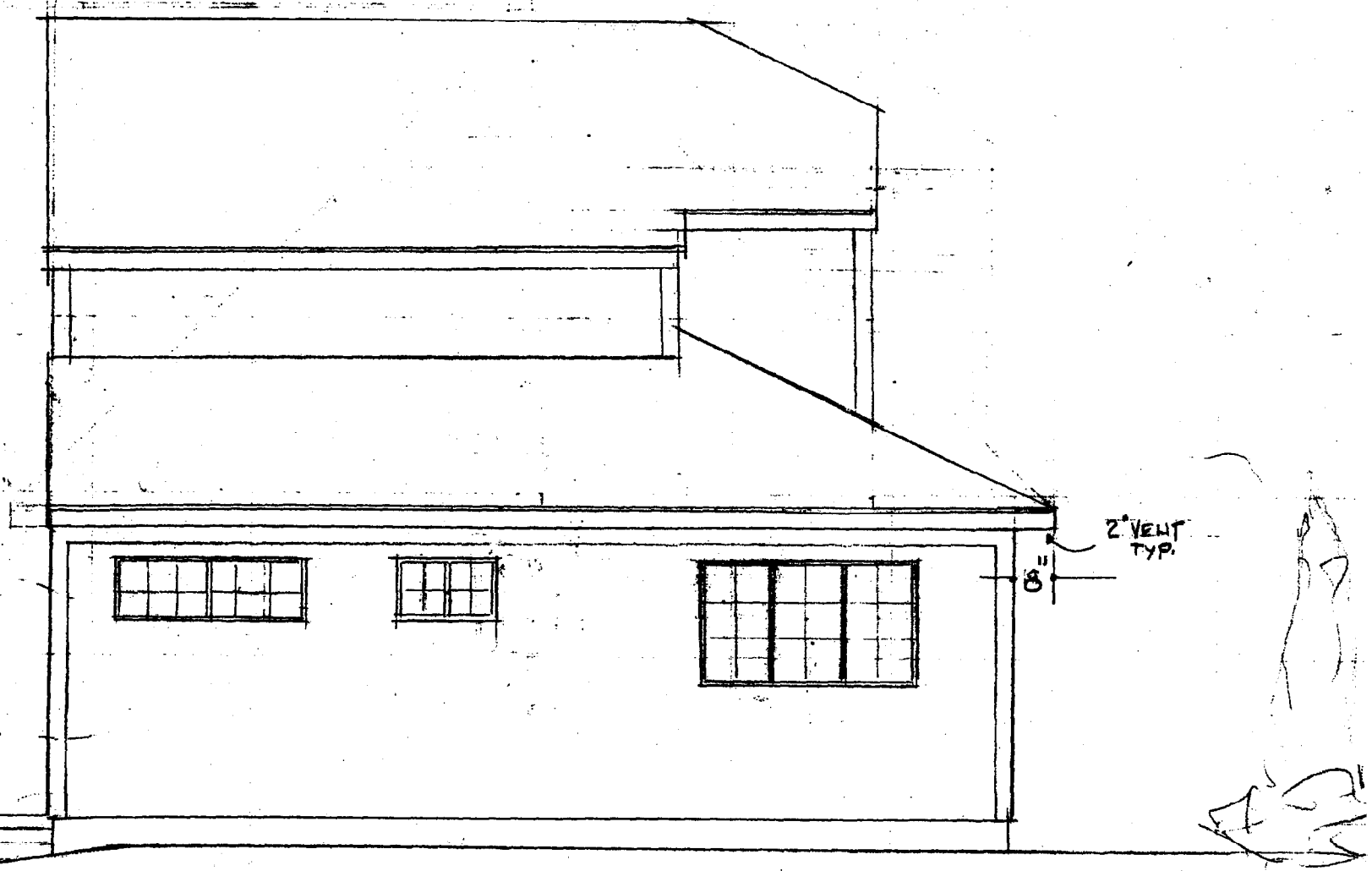


Now

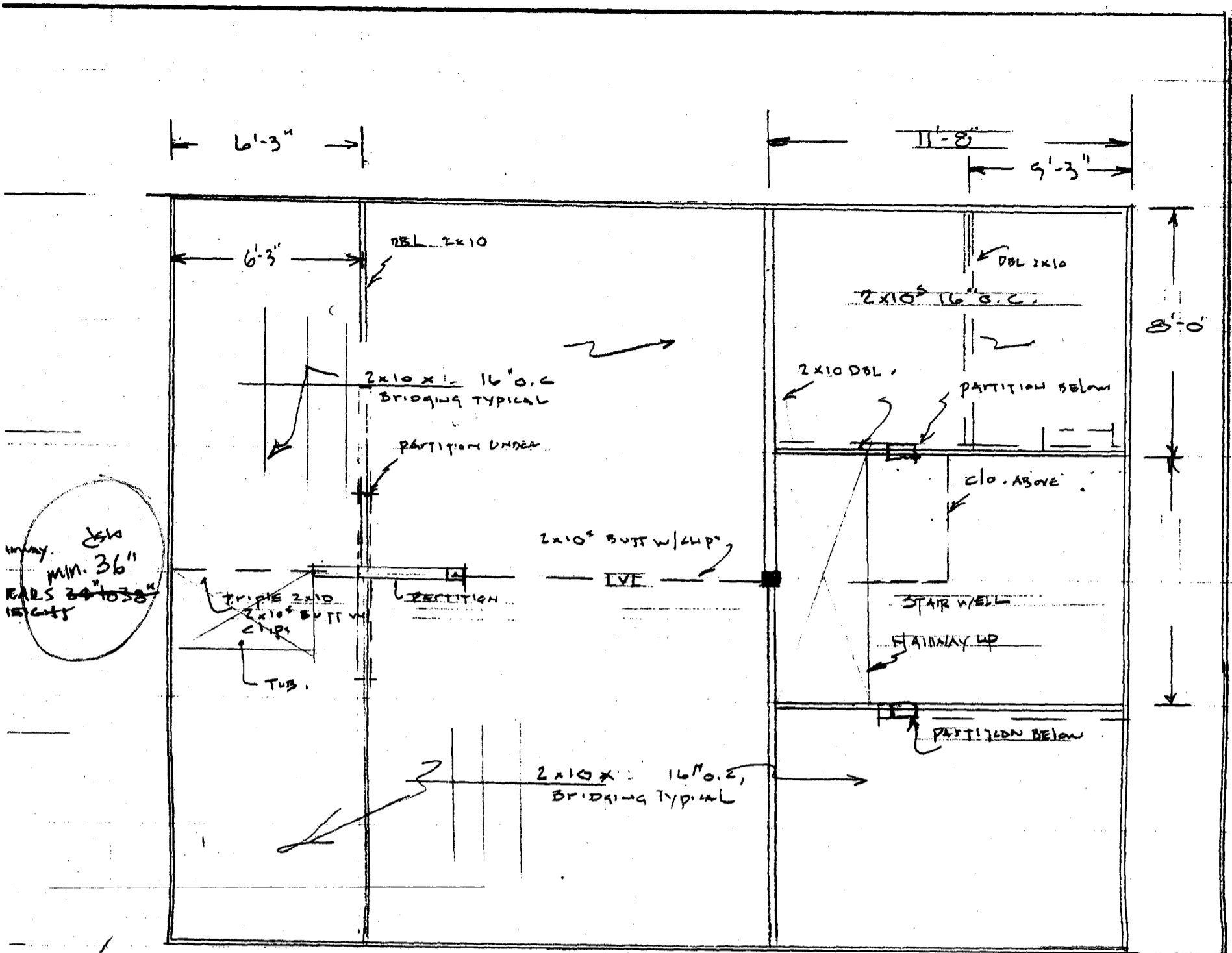
1 of 4
OCT 26, 02



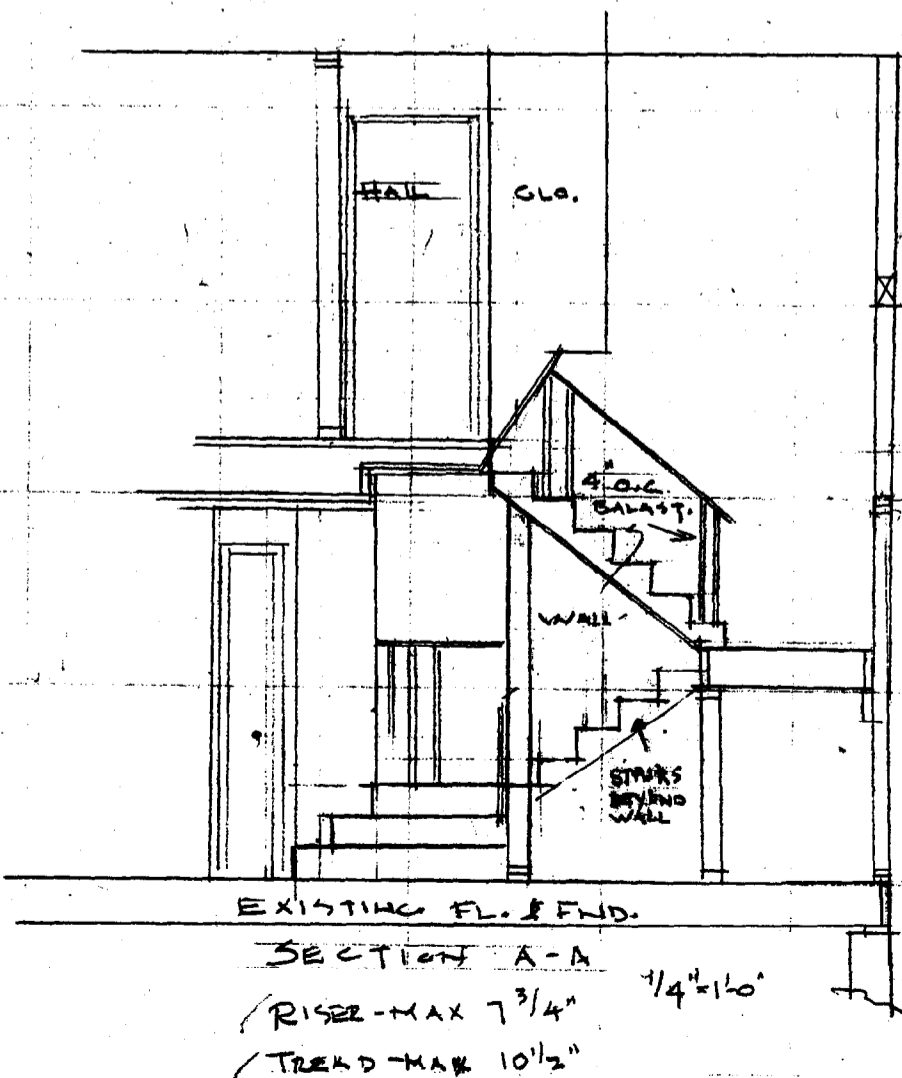
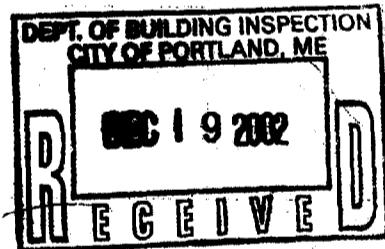
— FRONT ELEVATION —
1/4" = 1'-0"



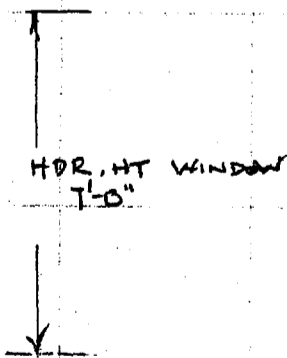
— LEFT ELEVATION —
1/4" = 1'-0"



— SECOND FLOOR
FRAMING
1/4" = 1'-0"



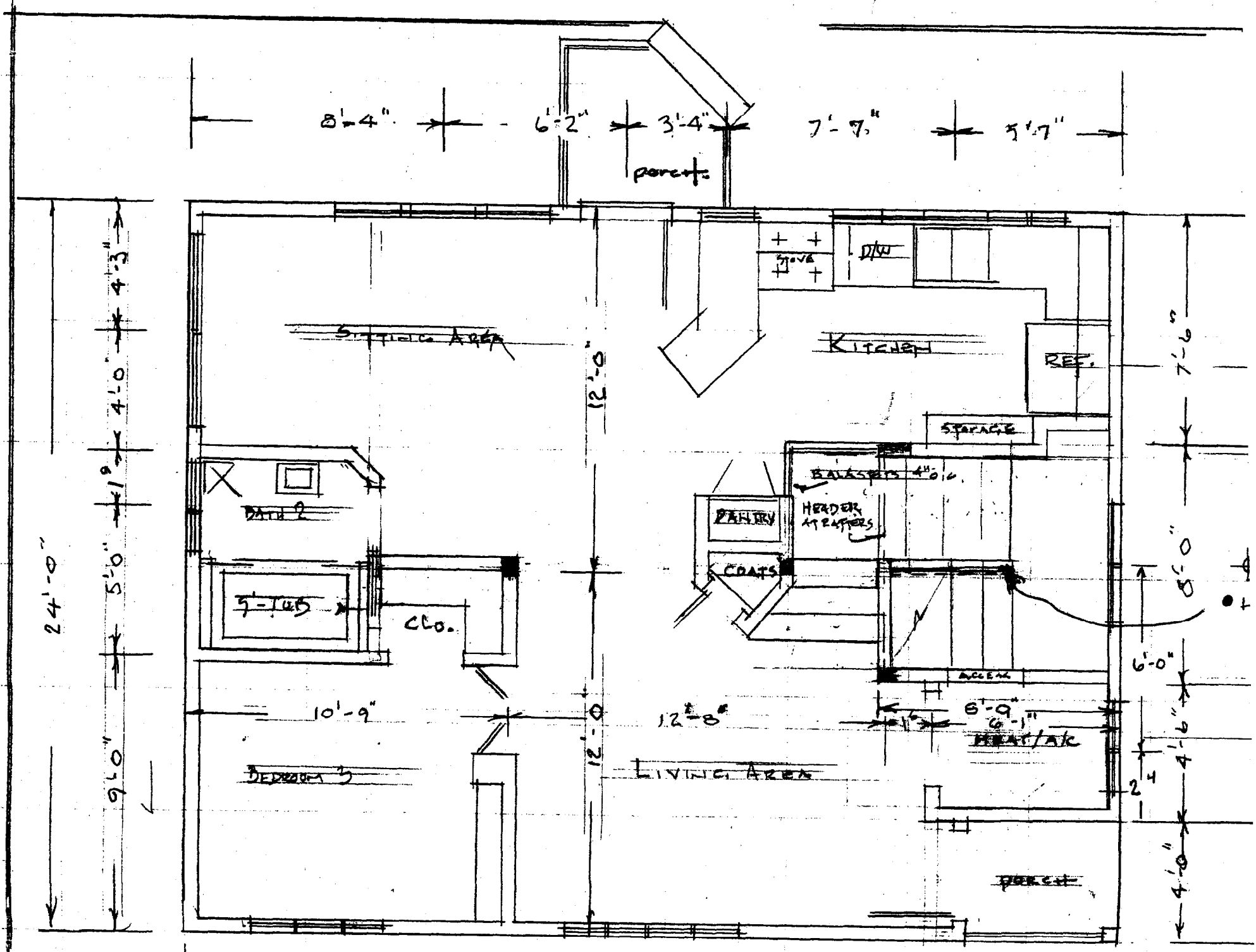
EXISTING FL. & FND.
SECTION A-A
/ RISE - MAX 7 3/4"
/ TREAD - MAX 10 1/2"
1/4" = 1'-0"



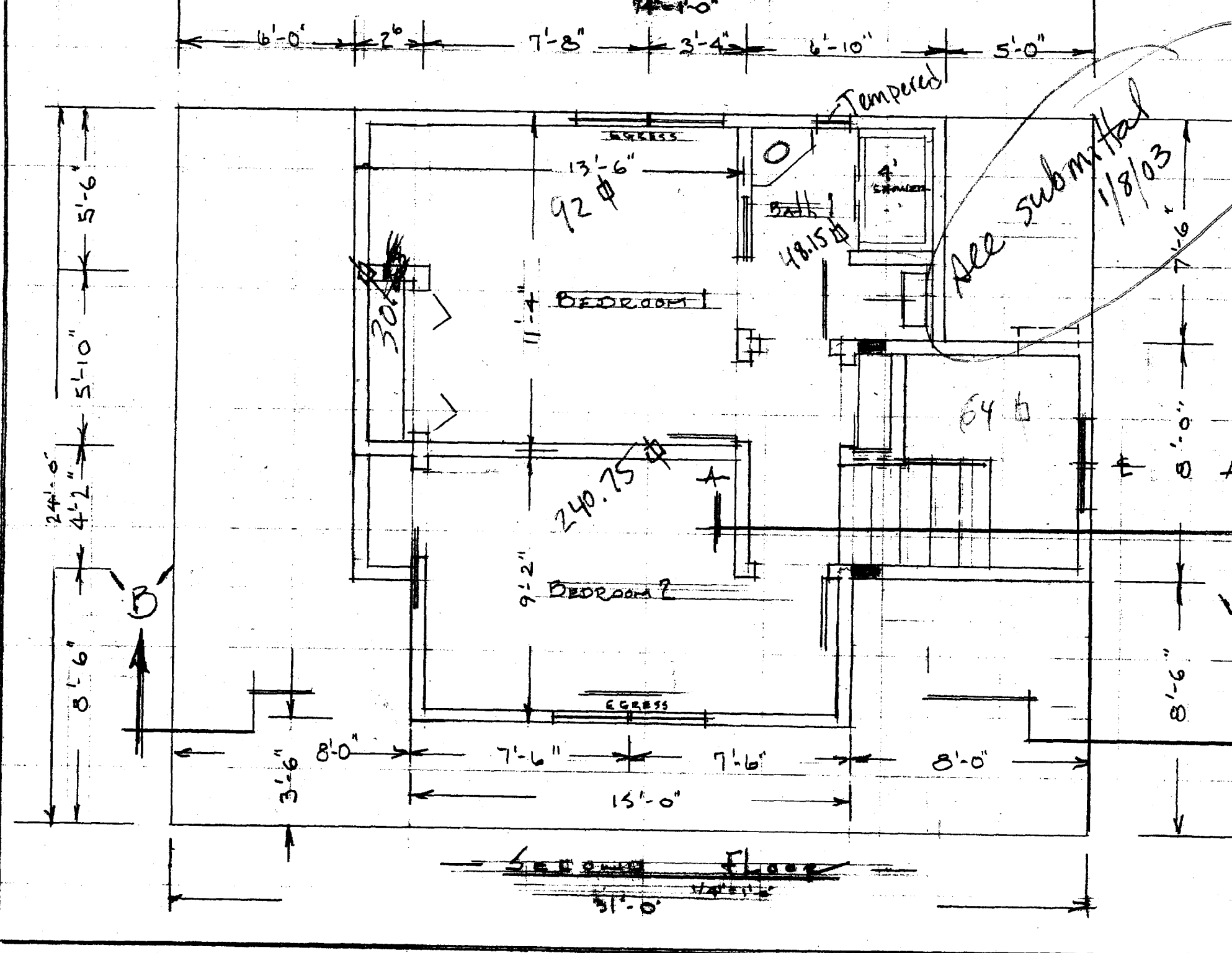
FLOOR PLANS & SECTIONS
FLOOR FRAMING
4 KING ST

DATE: 02
REVISED:
DATE: 12/19/02

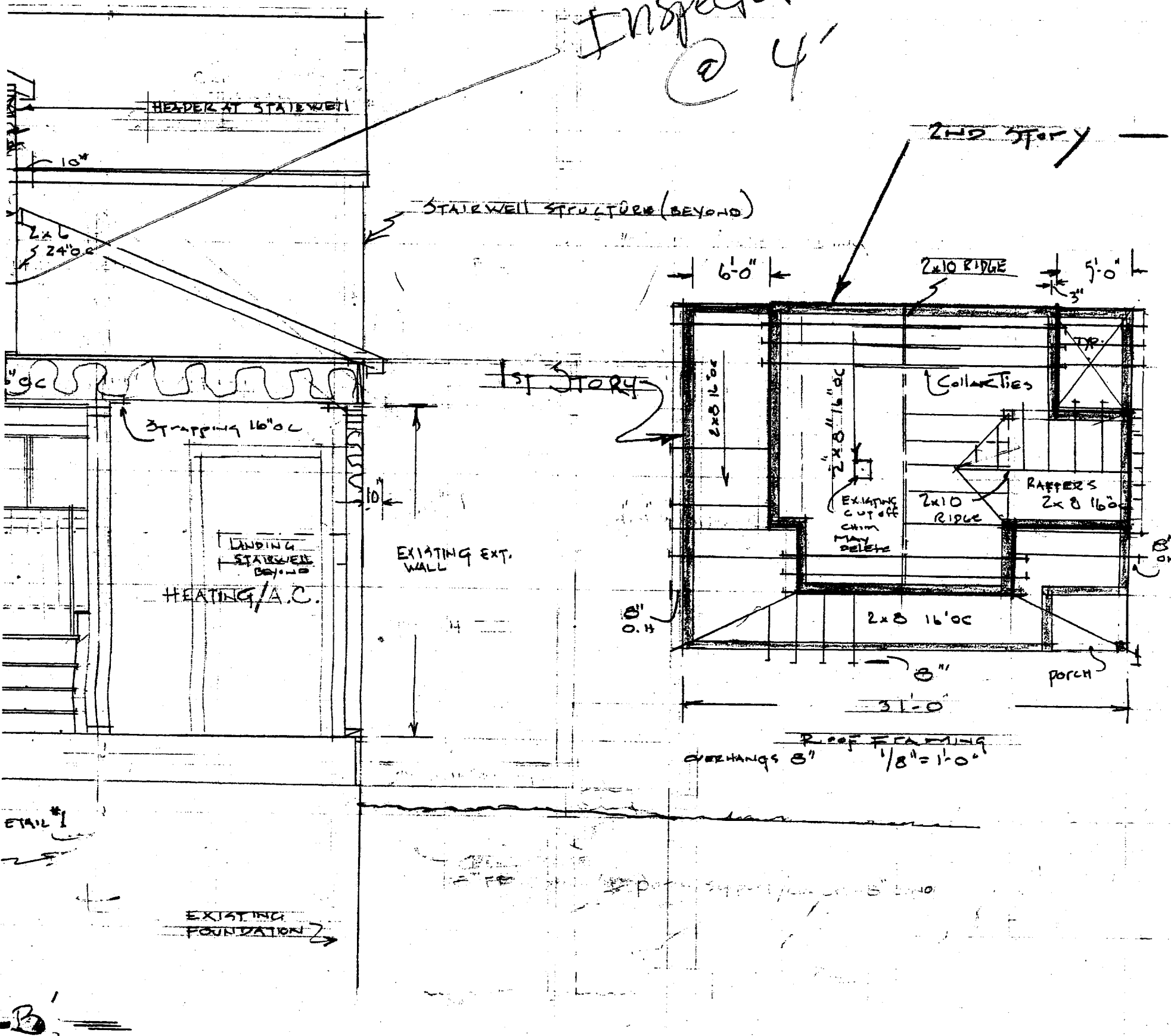
2
OF
4



FIRST FLOOR PLAN

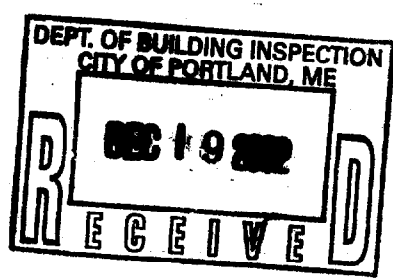


Inspector check wall @ 4'



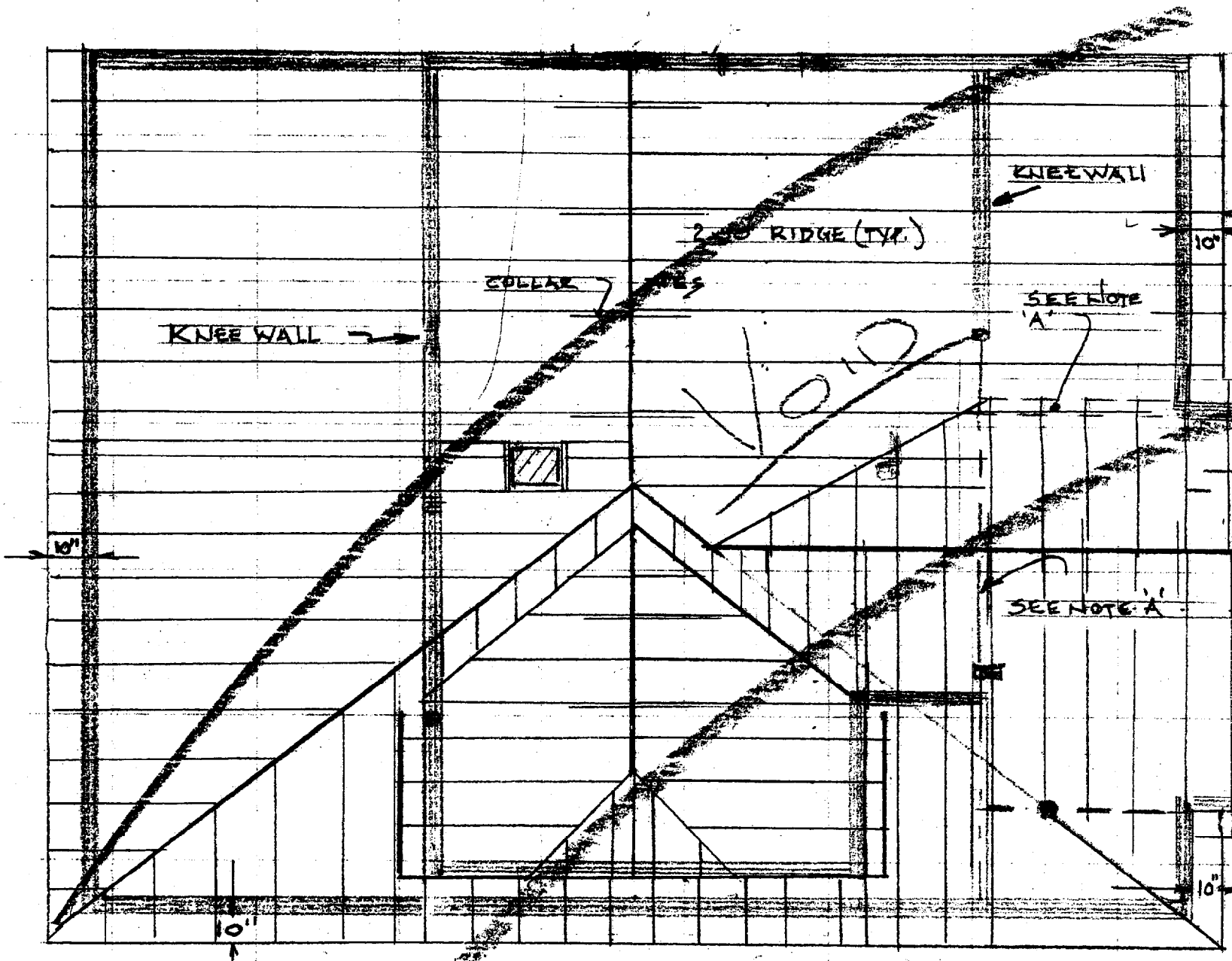
NOTES:

1. SEE DETAIL #1 FOR LOAD BEARING SUPPORT FOR NEW FLOOR & ROOF. LOAD POINTS SHOWN ON FIRST FLOOR PLAN AS ■ OR ■
2. EXISTING EXTERIOR WALLS TO HAVE NEW SIDING



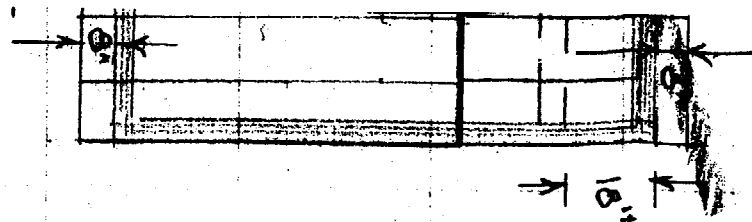
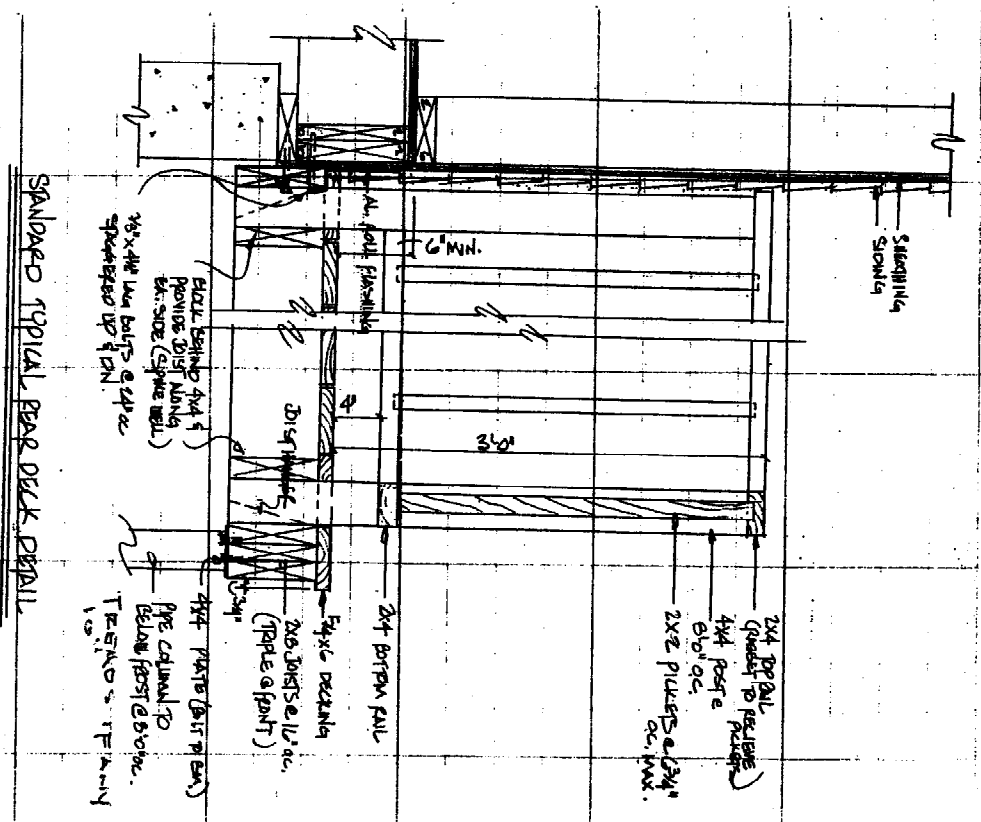
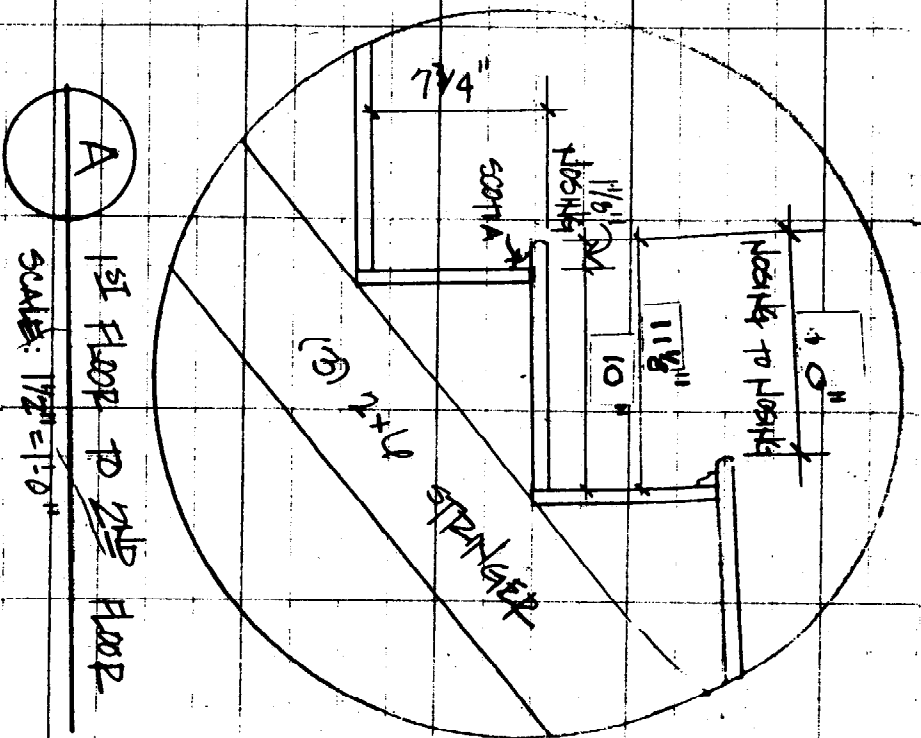
3 OF 4

OCT 26, 02



— RAFTER PLAN —

1/4" = 1'-0"



- NOTES:**
- A - RAFTERS REST ON HEADER & OE WALL
 - ALL RAFTER 2x8 SPRUCE OR HEMLOCK
 - DIRECT SUPPORT TO CONCRETE PADS IN CRAWL SPACE.
 - ALL RAFTERS 16" O.C.
 - SHADDED AREAS - WALLS BELOW
 - THE CHIMNEY EXIST BUT IS CUT OFF AT ATTIC - PLAN JUST REMAINS

DEPT. OF BUILDING INSPECTION
CITY OF PORTLAND, ME
OCT 19 2002
RECEIVED