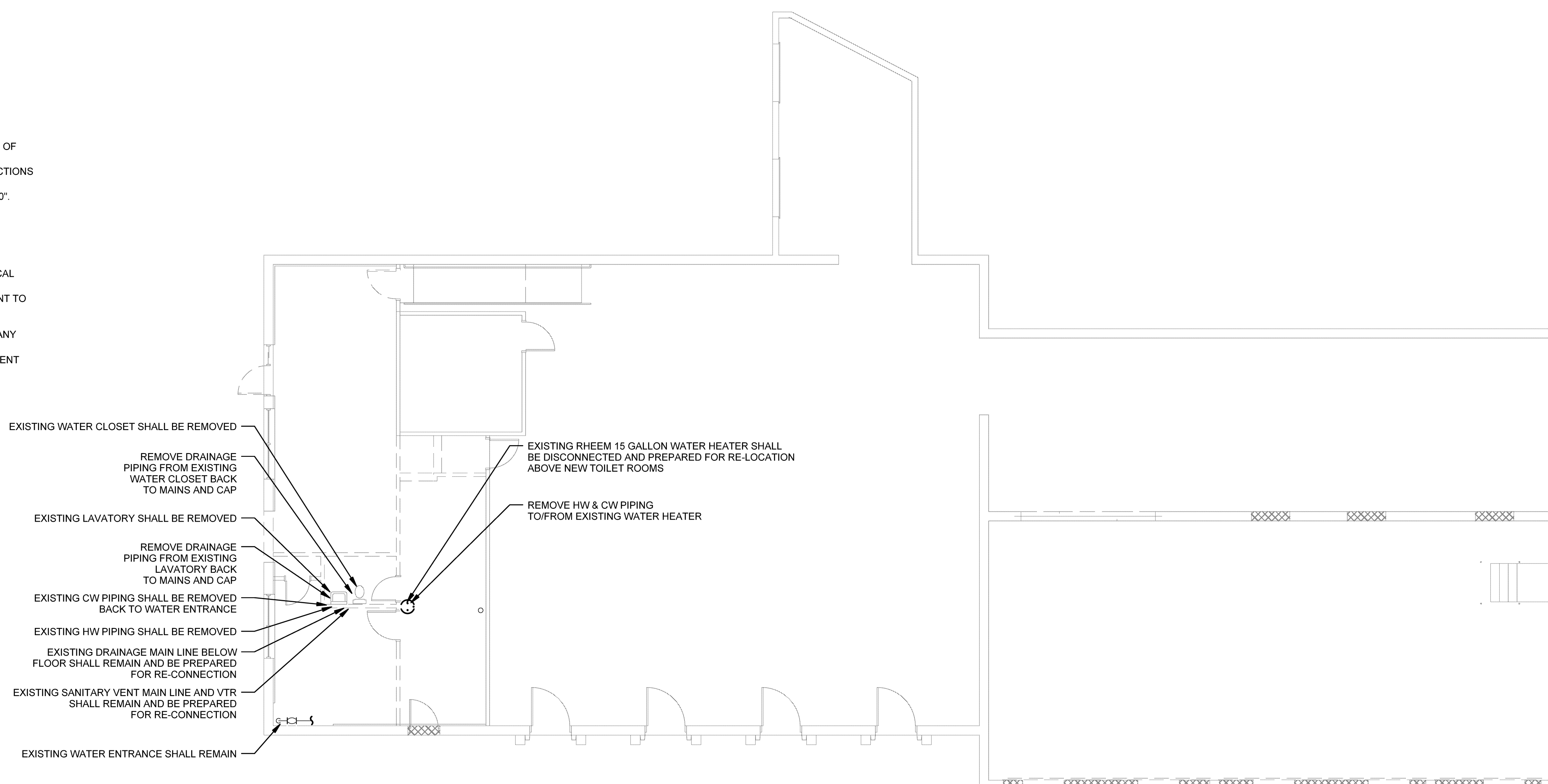


Legend

	SANITARY WASTE PIPING BELOW FINISHED FLOOR	L-1	LAVATORY
	SANITARY VENT PIPING BELOW FINISHED FLOOR	WC-1	WATER CLOSET
	SANITARY WASTE PIPING ABOVE FINISHED FLOOR	AFB	ABOVE FINISHED FLOOR
	SANITARY VENT PIPING ABOVE FINISHED FLOOR	BFF	BELOW FINISHED FLOOR
	DOMESTIC HOT WATER PIPING ABOVE FINISHED FLOOR	DN	DOWN
	DOMESTIC COLD WATER PIPING ABOVE FINISHED FLOOR	TYP.	TYPICAL
		V	VENT PIPING
		VTR	VENT THROUGH ROOF
		W	WASTE PIPING
		FCO	FLOOR CLEANOUT
			BALL VALVE

GENERAL NOTES

- COORDINATE WORK WITH THE WORK OF ALL OTHER TRADES.
- ALL UNDERSLAB PIPING SHALL BE INSTALLED TO PROVIDE NO LESS THAN 2" OF COVER BETWEEN PIPING AND FLOOR SLAB.
- REFER TO INSTALLATION SCHEDULE DATA FOR THE SIZE OF PIPING CONNECTIONS AND MOUNTING HEIGHTS OF EACH FIXTURE.
- SANITARY WASTE PIPING SHALL BE INSTALLED WITH A PITCH OF 1/4" PER 1'-0".
- ALL PIPING SHALL BE CONCEALED EXCEPT IN SPACES WHERE NO CEILINGS OCCUR.
- ALL VENT AND WATER SUPPLY SHALL PITCH TO DRAIN.
- THE TERM "PROVIDE" SHALL MEAN TO "FURNISH, INSTALL AND CONNECT COMPLETELY".
- OSHA RULES, REGULATIONS AND REQUIREMENTS, AND ANY STATE AND LOCAL REQUIREMENTS FOR SAFETY SHALL BE FOLLOWED BY THE CONTRACTOR.
- PROVIDE FIXTURE STOPS ON WATER SUPPLY PIPING IMMEDIATELY ADJACENT TO PLUMBING FIXTURES.
- CONTRACTORS SHALL CONFIRM EXISTING CONDITIONS PRIOR TO THE INSTALLATION OF SYSTEMS WHICH ARE INTENDED TO BE INTO OR RE-USE ANY PART OF EXISTING PIPING OR EQUIPMENT.
- ENTIRE PLUMBING INSTALLATION SHALL BE IN COMPLIANCE WITH ALL CURRENT LOCAL, STATE, AND FEDERAL CODES AND STANDARDS.



2.01 MATERIALS

- A. SOIL, WASTE, VENT, INDIRECT WASTE AND STORM DRAINAGE PIPING
- STANDARD WEIGHT CAST IRON, WITH SIZE, WEIGHT AND MANUFACTURER'S NAME ON EACH LENGTH AND FITTING, AND SHALL CONFORM TO ASTM STANDARD SPECIFICATIONS. JOINTS ABOVE GROUND SHALL BE LEAD CAULKED, COMPRESSION GASKETS OR NO-HUB WITH STAINLESS STEEL COUPLINGS. JOINTS BELOW GROUND SHALL BE EITHER LEAD CAULKED OR COMPRESSION GASKETS.
 - SCHEDULE 40 POLYVINYL CHLORIDE (PVC) WITH SOLVENT CEMENT JOINTS MAY BE USED FOR BELOW GROUND PIPING ONLY. FITTINGS SHALL BE OF THE DRAINAGE PATTERN.
 - DOUBLE BRANCH DRAINAGE CONNECTIONS 2" AND SMALLER SHALL BE MADE WITH DOUBLE WYE FITTINGS.
- B. COLD WATER, HOT WATER, HOT WATER RETURN PIPING: SHALL BE TYPE "L" HARD-DRAWN COPPER TUBING WITH WROUGHT COPPER, SOLDER-TYPE FITTINGS AND CONNECTIONS. IMMEDIATE EXPOSED PIPING AT FIXTURES SHALL BE IPS COPPER, CAST BRASS THREADED FITTINGS, ALL FINISHED AND CHROME-PLATED, UNLESS OTHERWISE NOTED.
- C. SPRINKLER PIPING: SHALL BE TYPE "L" HARD-DRAWN COPPER TUBING WITH WROUGHT COPPER, SOLDER-TYPE FITTINGS WITH ALL BRAZED CONNECTIONS.
- D. SPRINKLER HEADS: SHALL BE PENDANT STYLE, CHROME FINISH, WITH RECESSED TYPE ESCUTCHEONS RATED BETWEEN 155%/3248F AND 165%/3248F, UNLESS OTHERWISE NOTED OR REQUIRED BY CODE, AND LISTED AS A QUICK RESPONSE TYPE HEAD.
- E. SPRINKLER FLOW SWITCH: POTTER ELECTRIC SIGNAL COMPANY # VSR-F VANE TYPE WATER FLOW ALARM SWITCH WITH AN ADJUSTABLE RETARD SETTING FROM 10 SECONDS TO 90 SECONDS HAVING TWO SETS OF SPDT CONTACTS. ENLARGE THE PIPING AS NECESSARY FOR INSTALLATION.
- F. SPRINKLER ALARM: POTTER ELECTRIC SIGNAL COMPANY, ELECTRIC ALARM BELL, DESIGNED FOR EXTERIOR MOUNTING, AND CAPABLE OF BEING ACTUATED BY THE FLOW SWITCH.
- G. VALVES AND FITTINGS: PROVIDE BALL VALVES FOR COMPLETE OPERATION AND DRAINAGE. PROVIDE ACCESSIBLE SECTIONALIZING VALVES WHERE WATER BRANCHES CONNECT TO MAINS. PROVIDE DRAIN VALVES AT THE LOW POINTS. VALVES SHALL BE APOLLO #8A-100S OR #8A-150S, BRONZE BODY, BLOWOUT-PROOF STAINLESS STEEL STEM, STAINLESS STEEL BALL, TEFLON SEATS, STAINLESS STEEL LEVER HANDLE WITH VINYL GRIP, RATED FOR 600 PSI WOG.
- H. HANGERS: ALL HANGERS SHALL BE OF THE ADJUSTABLE CLEVIS TYPE WITH SHIELDS FOR PLASTIC PIPING AND ALL INSULATED PIPING. VERTICAL PIPE CLAMPS FOR COPPER PIPING SHALL BE COPPER, BRONZE OR BRONZE PLATED CONSTRUCTION; ALL OTHER VERTICAL CLAMPS AND ALL HORIZONTAL PIPE HANGERS SHALL BE ALL STEEL CONSTRUCTION.

I. INSULATION

- PROVIDE 1" THICK FIBERGLASS INSULATION FOR ALL COLD WATER, HOT WATER, HOT WATER RETURN AND STORM DRAINAGE PIPING.
- FOR COLD WATER AND STORM DRAINAGE PIPING PROVIDE A VAPOR BARRIER.
- PROVIDE "TRU-BRO" KIT #102, PRE-MOLDED INSULATION FOR THE EXPOSED WATER AND DRAIN LINES UNDER ALL LAVATORIES AND THE COUNTER SINK.

3.01 ERECTION, INSTALLATION AND APPLICATION

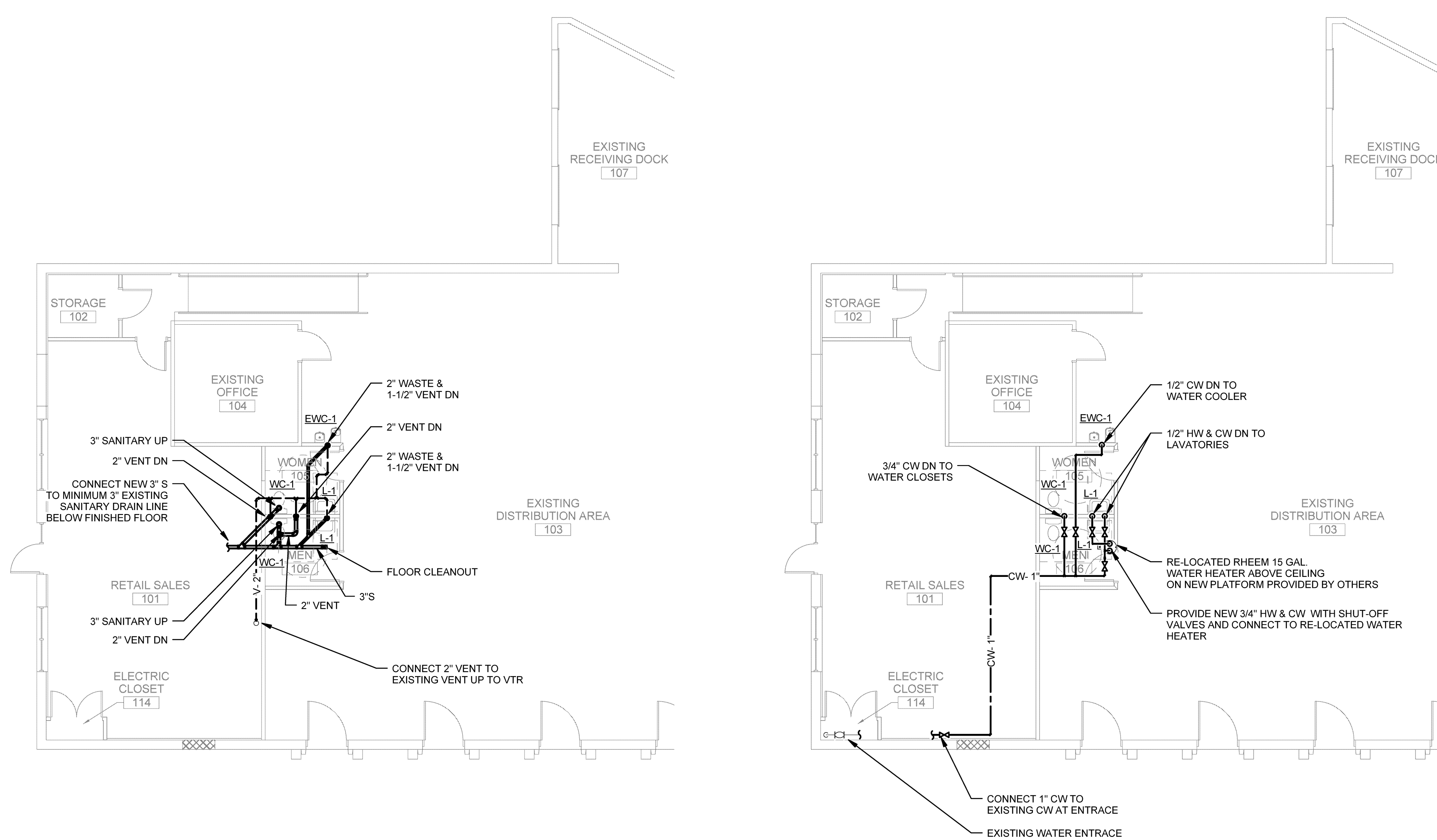
- A. ALL VENT PIPING SHALL BE RUN AT A POSITIVE PITCH TO DRAIN BACK TO THE DRAINAGE CONNECTIONS.
- B. DRAINAGE PIPING SHALL BE RUN AT 1/4" PER FOOT (TWO PERCENT) PITCH.
- C. ALL FIXTURES SHALL BE INSTALLED LEVEL AND FLUSH TO WALLS AND FLOORS AS APPLICABLE.
- D. ALL FIXTURES SHALL BE SEALED WATER TIGHT WITH CAULK TO ALL ADJACENT SURFACES. THIS SHALL INCLUDE BUT NOT BE LIMITED TO SEALING WALL-HUNG LAVATORIES, AND WATER CLOSETS TO FLOORS. CAULKING SHALL BE OF THE APPROPRIATE TYPE FOR THE GIVEN APPLICATION AND SHALL BE INSTALLED IN ACCORDANCE WITH THE MANUFACTURER'S INSTRUCTIONS AND RECOMMENDATIONS.
- E. THE ENTIRE PLUMBING SYSTEM SHALL BE INSTALLED IN ACCORDANCE WITH THE STATE OF MAINE INTERNAL PLUMBING RULES, AND ALL LOCAL CODES.
- F. THE SPRINKLER WORK SHALL BE IN ACCORDANCE WITH NFPA PAMPHLET #13.

3.02 TESTS

- A. TEST AND PROVE TIGHT ALL PIPING SYSTEMS IN THE BUILDING IN ACCORDANCE WITH THE STATE OF MAINE INTERNAL PLUMBING RULES PROCEDURES. WATER PIPING SHALL BE TESTED AT 125 PSIG.

1 FLOOR PLAN DEMOLITION

SCALE: 1/8" = 1'-0"



PLUMBING FIXTURE INSTALLATION SCHEDULE

FURNISHED AND INSTALLED BY PLUMBING CONTRACTOR UNLESS OTHERWISE NOTED

LABEL	FITTURE DESCRIPTION	BRANCH SIZE				SPECIFICATIONS	MTG. HT TO RIM
		VENT	WASTE	CW	HW		
WC-1	WATER CLOSET FLOOR MOUNTED ADA COMPLIANT	2"	3"	1 1/2"	--	PROVIDE FLOOR MOUNT TANK TYPE WATER CLOSET EQUAL TO KOHLER MODEL K-3609 CIMARRON WHITE VITREOUS CHINA, ELONGATED BOWL, AQUA PISTON FLUSHING SYSTEM, 1.28 GPF POLISHED CHROME MANUAL TRIP LEVER, PROVIDE TOILET SEAT EQUAL TO CHURCH MODEL 9500C, WHITE, MOLDED SOLID PLASTIC, OPEN FRONT WITHOUT COVER, ELONGATED, CHECK TYPE HINGES, HEAVY DUTY COMMERCIAL GRADE.	16-1/2"
L-1	LAVATORY ADA COMPLIANT	1-1/2"	2"	1 1/2"	1/2"	PROVIDE WALL MOUNTED LAVATORY EQUAL TO KOHLER K-2005 KINGSTON, WHITE VITREOUS CHINA, 4" CENTERS, DRILLED FOR CONCEALED ARM CARRIER, PROVIDE LAVATORY CARRIER WITH CONCEALED ARMS AND THE ROD FOR MOUNTING PROVIDE FAUCET EQUAL TO KOHLER K-1524-4 METAL CONSTRUCTION, SATIATORY SPOUT, LEVER HANDLES, POLISHED CHROME FINISH, GRID DRAIN WITH TAIL PIECE, 1.5 GPM MAX FLOW RATE, PROVIDE CHROME PLATED BRASS P-TRAP AND WALL ESCUTCHEON, PROVIDE PROTECTIVE SHIELDING GUARD EQUAL TO TRUBRO MODEL 102-EZ, ONE P-TRAP COVER, 2 ANGLE VALVE COVERS.	34"
EW-C-1	BI-LEVEL ELECTRIC WATER COOLER ADA COMPLIANT	1-1/2"	2"	1 1/2"	--	PROVIDE ELECTRIC WATER COOLER EQUAL TO HALSEY TAYLOR MODEL HVRSHD-RL ADA BI-LEVEL WALL MOUNTED BARRIER FREE COOLER, SELF-CONTAINED, STAINLESS STEEL CABINET, 8 GPM OF 50 DEG. WATER AT 90 DEG. AMBIENT AND 80 DEG. INLET WATER, PUSH BUTTON ACTIVATION, VANDAL RESISTANT BUBBLER, COOLING SYSTEM WITH STAINLESS STEEL EVAPORATOR TANK AND R134a REFRIGERANT, 115v/1ph/60Hz, ADA COMPLIANT.	39-1/16" TO ORIFICE 32-9/16" TO ORIFICE

2 FLOOR PLAN DRAINAGE

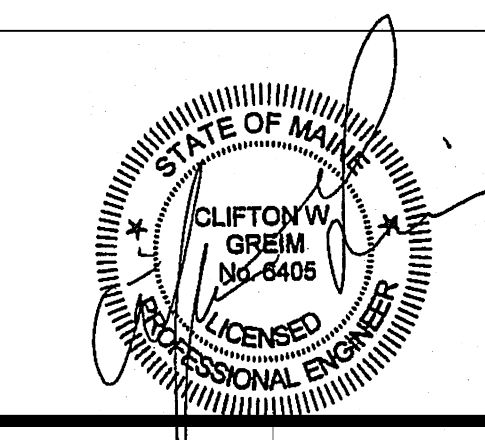
SCALE: 1/8" = 1'-0"

3 FLOOR PLAN SUPPLY

SCALE: 1/8" = 1'-0"

Issues and Revisions

Mark	Date	Description
01-23-15		ISSUED FOR 100% REVIEW
01-30-15		ISSUED FOR CONSTRUCTION



Drawing Scales: 0 4 8 12
1/8" = 1'-0" 1/8" = 1'-0"

PA/PE: CG © 2015 Harriman Associates
Drawn By: RGM

PLUMBING PLANS & SPECIFICATIONS

P10.1